

Prioritizing Safe, Equitable and Sustainable Mobility



The City of

WORCESTER

Department of
Transportation & Mobility

Stephen S. Rolle, P.E.

Commissioner

RolleS@worcesterma.gov

Topics

- Introduction to DTM
- Current work program and priorities
- Overview of Mobility Action Plan

DTM Facts and Figures

Roles

Transportation Policy & Planning, Traffic Engineering, Project Management, Parking and Curb-side Management, Parking Enforcement

Established

Established August 2023
24 staff positions

Mission

Safe, Equitable and Sustainable Mobility

Where to find us

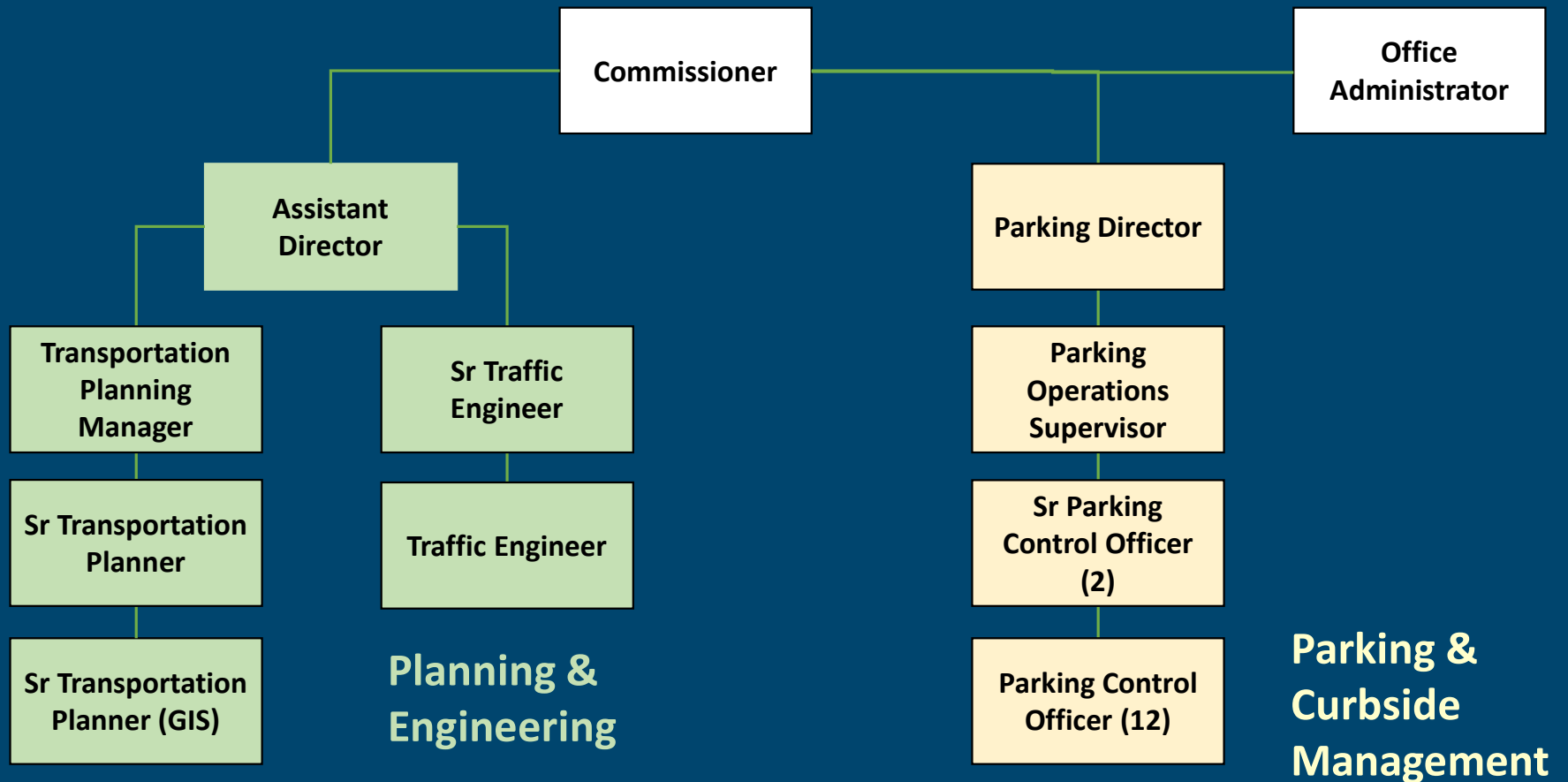
76 East Worcester Street
508-929-1300 x49500

Email: Mobility@worcesterma.gov

Web: <http://www.worcesterma.gov/mobility>



DTM Organization



Transportation Planning

Identify, coordinate and prioritize

Precedent Plans

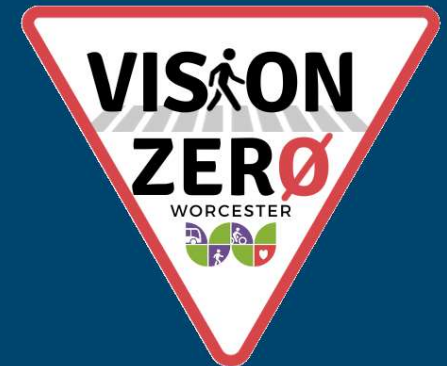
- Green Worcester Plan – completed 2022
- Community Health Improvement Plan – 2021
- Community Health Assessment - 2024
- Worcester Now | Next Plan
 - Draft report online: <https://now-next.worcesterma.gov/>

Transportation Planning

Identify, coordinate and prioritize

DTM Planning Efforts

- Complete Streets Prioritization Plan – 2022
- Mobility Action Plan (MAP) - ongoing
- SS4A – Vision Zero Plan
 - Vision Zero Launch Event on February 29th
- ADA Self-Evaluation and Transition Plan



Implementation priorities

Safety, Equity and Sustainability

- Traffic calming program
- Safe speed limits
- Complete streets
 - Arterial improvements
 - Bicycle and pedestrian network
 - Pedestrian crossing improvements
- Traffic signal modernization



Sustainable Transportation Opportunities

- Improve quality of and access to transportation options
 - Bicycle and pedestrian network
 - Transit
 - Shared mobility
- Coordinating land use and transportation
- Public EV charging
- Green infrastructure
- Urban tree canopy and impervious surfaces



Source: EPA

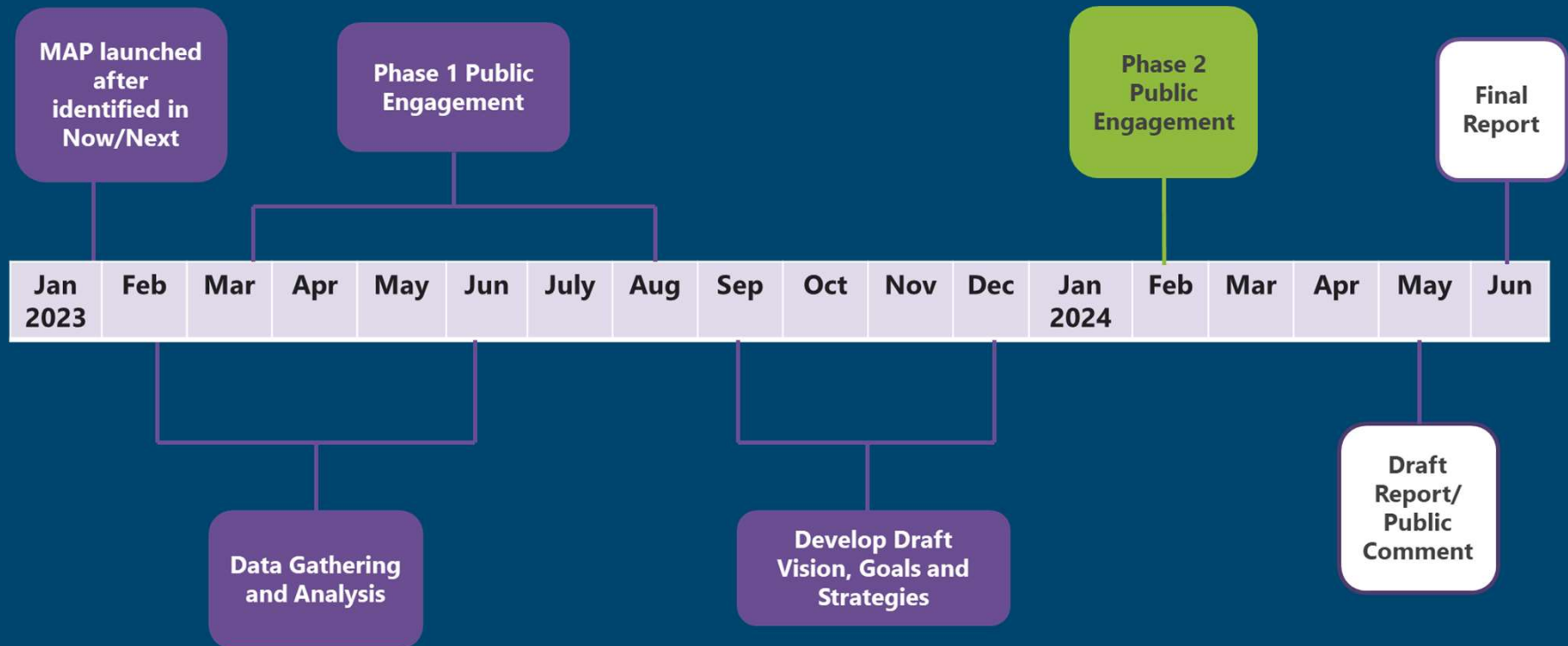
Mobility Action Plan (MAP)

<http://www.worcesterma.gov/mobility/worcester-mobility-action-plan>



Mobility Action Plan (MAP)

<http://www.worcesterma.gov/mobility/worcester-mobility-action-plan>



Mobility Action Plan (MAP)

<http://www.worcesterma.gov/mobility/worcester-mobility-action-plan>

Safety

- Build safe streets for all users
- Prioritize safety of vulnerable roadway users
- Reduce crashes and severity of outcomes

Connectivity

- Expand transportation options
- Facilitate active transportation

Equity

- Foster Engagement & Participation
- Improve Physical Accessibility
- Improve Transit Rider Experience
- Increase Economic Accessibility

Sustainability

- Green the Streets
- Improve transit reliability
- Increase non-auto mode share
- Reduce vehicle emissions

Mobility Action Plan (MAP)

<http://www.worcesterma.gov/mobility/worcester-mobility-action-plan>



Transit | *The topic of public transit was a key priority that came up frequently during engagement activities.*

Service: Challenges with reliability, frequency, timing, network gaps

Infrastructure: Need more bus shelters and benches, better snow clearance

Fare free: Fare free transit is a valuable resource to the City and should continue



Walking | *Pedestrians in Worcester are challenged with unsafe walking facilities and when interacting with speeding drivers.*

Safety: Hazardous crossings. Traffic-calming would help, as well as better lighting, sidewalk repairs, and other ADA-related improvements.

Pedestrian Network: A disconnected network of sidewalk infrastructure and lack of intuitive crossings. Challenges related to ADA and accessibility.



Biking | *Biking is of interest to people in Worcester, but most won't bike without more dedicated facilities.*

Bike Network: Current disconnected network creates safety issues, confusion, and generally deters people from biking

Infrastructure: People would be more inclined to bike if there were more protected on- and off-street lanes and more bike parking.



Driving | *Speeding is a primary issue related to motor vehicle travel in the City.*

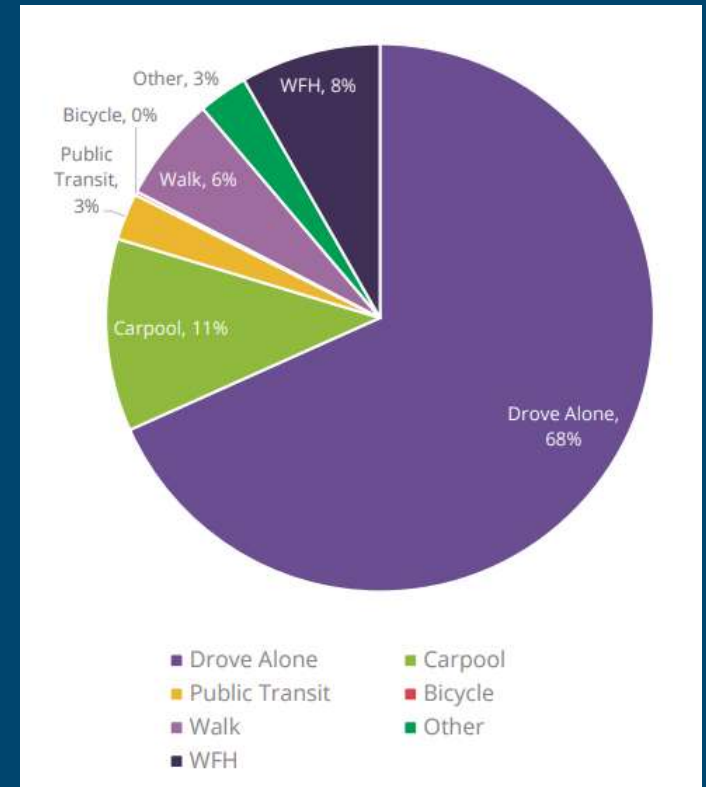
Speeding: Speeding prevalent throughout the city; enforcement/monitoring is lacking. Initiatives related to traffic calming and slow streets would help.

Parking: People often park on sidewalks or in other illegal locations.

Mobility Action Plan (MAP)

<http://www.worcesterma.gov/mobility/worcester-mobility-action-plan>

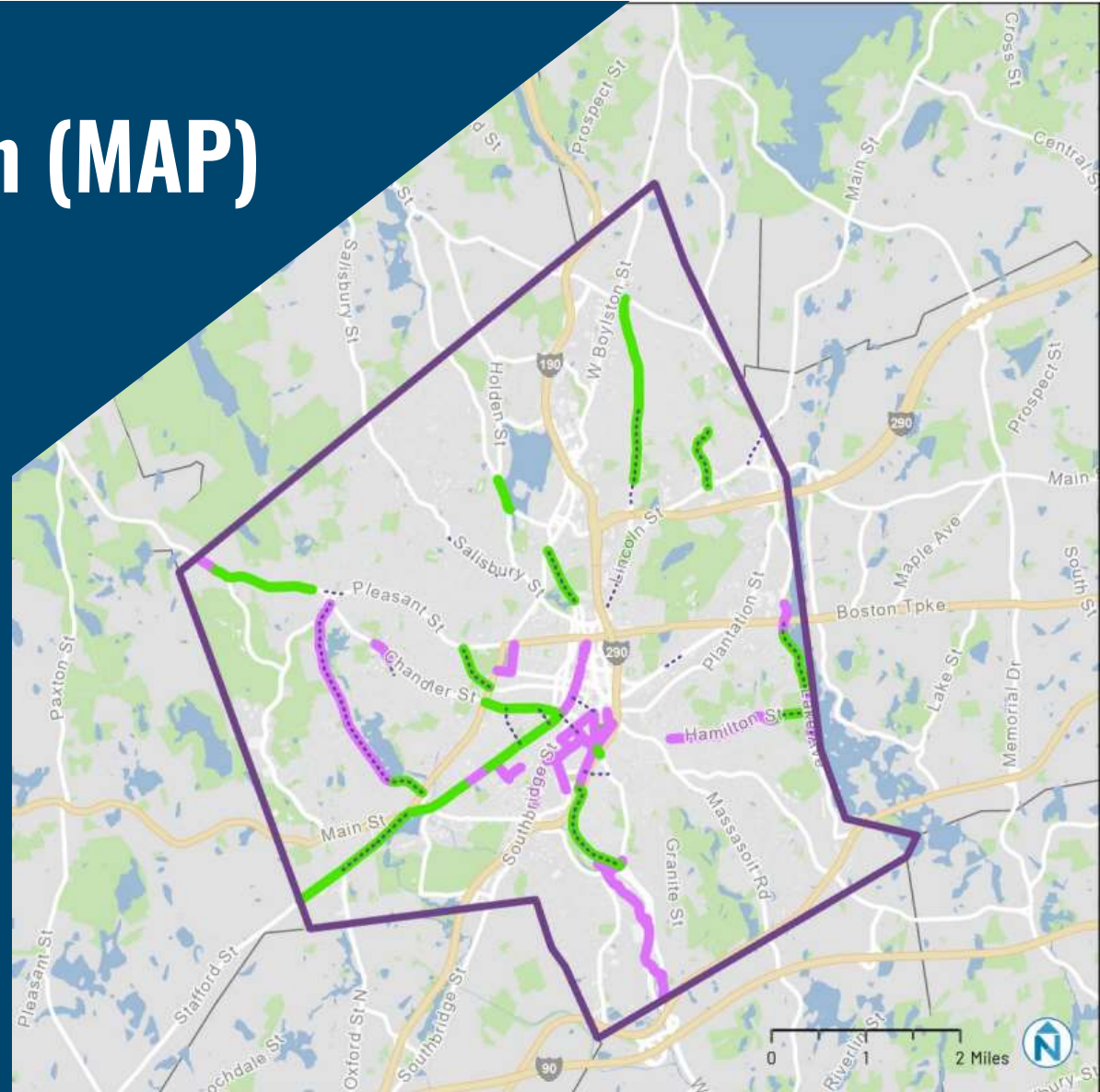
- Commuter Mode Choice
 - 68% of commuters drove alone
 - Very low mode share for public transit and bicycling
- Vehicle Availability
 - 17% of households do not have access to a motor vehicle
 - 26% of renters
 - 38% of city center residents
- 60% of Worcester households have 1 or fewer vehicles.



Mobility Action Plan (MAP)

<http://www.worcesterma.gov/mobility/worces>

- Bike Network
 - 7.2 miles of on-street lanes
 - 3.4 miles of off-street paths



Mobility Action Plan (MAP)

<http://www.worcesterma.gov/mobility/worcester-mobility-action-plan>

- Public Workshops

Monday Feb 12th 5:30 PM

Preservation Worcester Park View Room
230 Park Avenue

Thursday Feb 15th 5:30 PM

Virtual Online Meeting

Register online

Wednesday Feb 21st 5:30 PM

Worcester Senior Center
128 Providence St

Prioritizing Safe, Equitable and Sustainable Mobility



The City of

WORCESTER

Department of
Transportation & Mobility

Stephen S. Rolle, P.E.

Commissioner

RolleS@worcesterma.gov