

Airport Rotary & Airport Drive #1

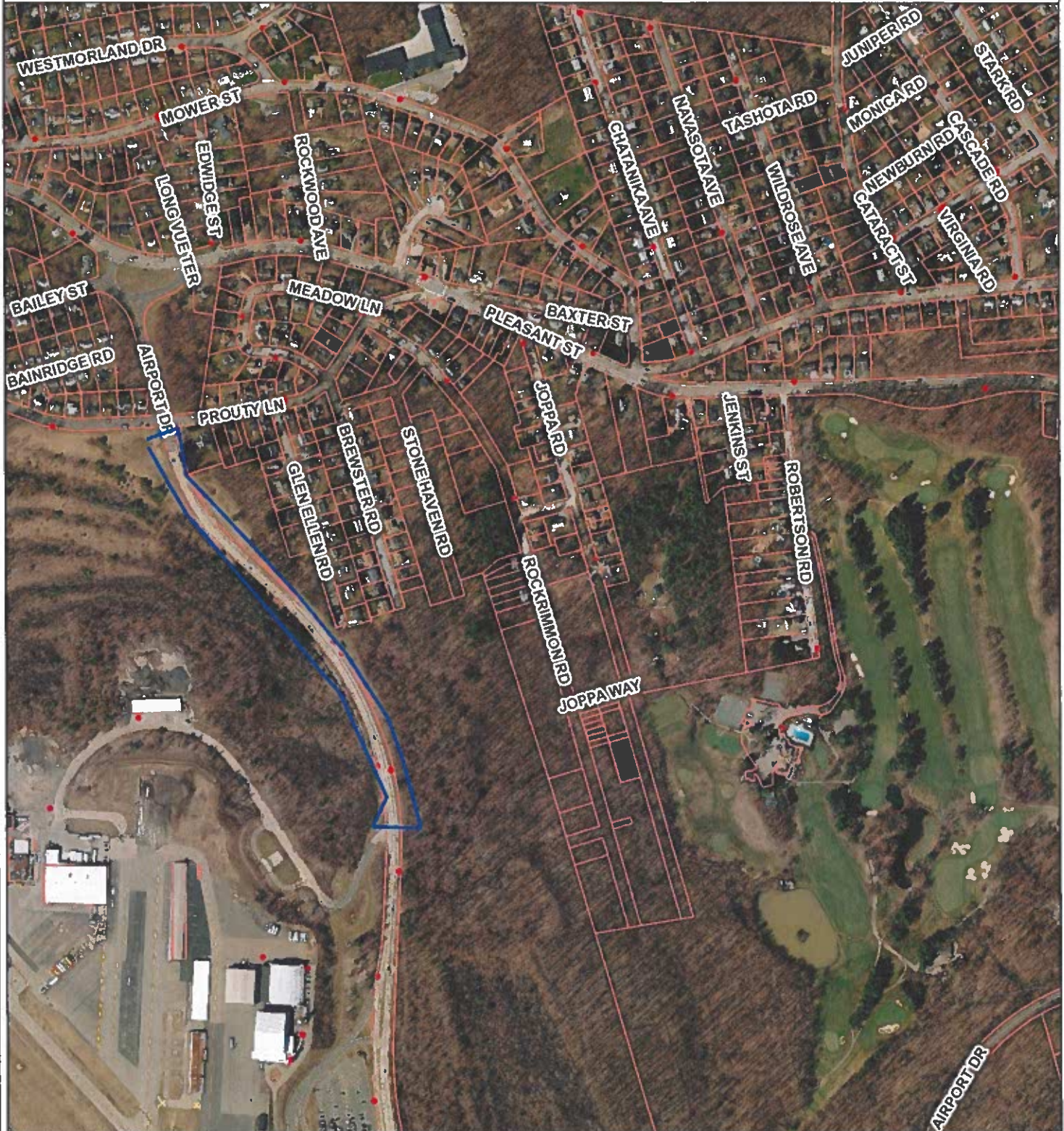


DATA SOURCES:
 Basemap data: City of Worcester, MA Geographic Information System
 Original Data - Digitized at 1:480 scale (Data true resolution: 1 inch = 40 feet)
 Updated Using Spring 2003 Photography at 1 inch = 100 feet
 Further Updates Using City of Worcester Information
 Property Details: City of Worcester, MA Assessing Division

COORDINATE SYSTEM:
 All map data is in the Massachusetts State Plane Coordinate system,
 North American Datum of 1983, Massachusetts Mainland Zone (4151).
 Units are measured in Feet, Vertical Datum NAVD83.

DISCLAIMER:
 Considerable effort has been made to ensure the accuracy, correctness
 and timeliness of data presented; however, the information is only as
 accurate as its sources and may not reflect the most current information.
 This map is a graphical representation of information for tax administration
 purposes only and does not represent a professional survey. The City of
 Worcester assumes no liability for any errors, omissions or inaccuracies
 and makes no warranty, representation or guaranty of any kind as to the
 content or for any decisions made or actions taken or not taken by the
 user based upon any information provided on this map.

Airport Rotary & Airport Drive #2



DATA SOURCES
 Basemap data: City of Worcester, MA Geographic Information System
 Original Data - Digitized at 1:480 scale (Data true resolution: 1 inch = 40 feet)
 Updated Using Spring 2003 Photography at 1 inch = 100 feet
 Further Updates Using City of Worcester Information
 Property Details: City of Worcester, MA Assessing Division

- Hydrants
- ▭ Parcels
- ▭ City

COORDINATE SYSTEM
 All map data is in the Massachusetts State Plane Coordinate system:
 North American Datum of 1983, Massachusetts Mainland Zone (415 ft)
 Units are measured in Feet, Vertical Datum NAVD83

DISCLAIMER
 Considerable effort has been made to ensure the accuracy, correctness and timeliness of data presented, however, the information is only as accurate as its sources and may not reflect the most current information. This map is a graphical representation of information for tax administration purposes only and does not represent a professional survey. The City of Worcester assumes no liability for any errors, omissions or inaccuracies and makes no warranty, representation or guaranty of any kind as to the content or for any decisions made or actions taken or not taken by the user based upon any information provided on this map.



Asselin Square Map

6/8/2026 4:15 PM



Override 1
Hydrants

- City Owned Hydrant, In Service
- Tax Parcels
- Buildings

DATA SOURCE:
 City of Worcester Geographic Information System
 Original Data - Digitized at 1:80 scale (Data year resolution: 1 inch = 40 feet)
 Updated Using Spring 2023 Aerial Photography at 1:700 scale (1 inch = 100 feet)
 Further Updates Using City of Worcester Information

Considerable effort has been made to ensure the accuracy, correctness and timeliness of data presented however, this information is only as accurate as its sources and may not reflect the most current information. The City of Worcester, MA assumes no liability for any errors, omissions or inaccuracies and makes no warranty, representation or guaranty of any kind, express or implied, as to the content or for any divisions, errors or omissions herein or reliance thereon by the user based upon any information provided on this map.



AUD Map

6/8/2025 4:19 PM



Override 1

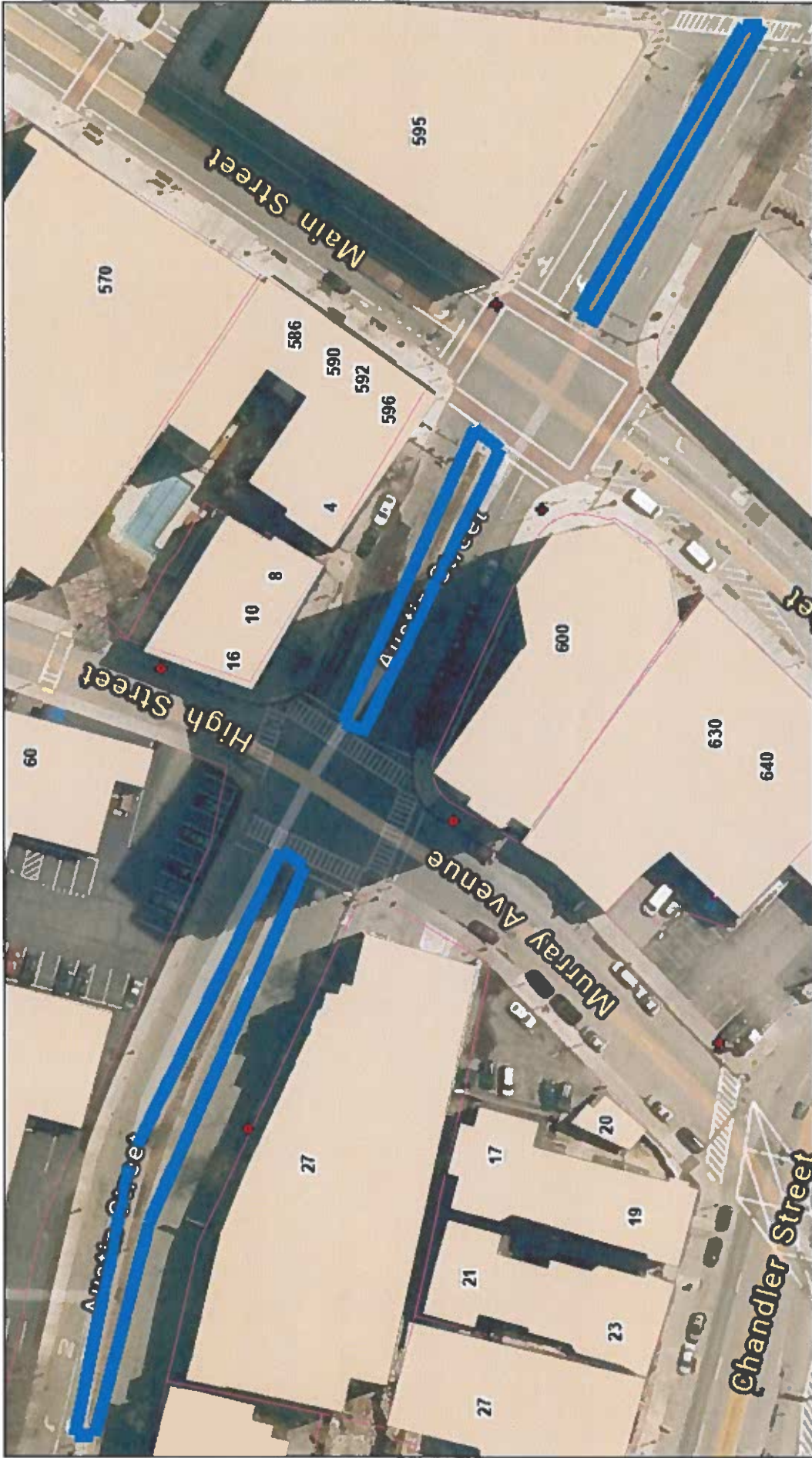
Hydrants

City Owned Hydrant, in Service

Tax Parcels
Buildings

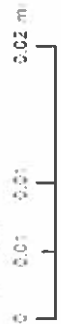
DATA SOURCE:
City of Worcester Geographic Information System
Copyright Data - Original at 1:480 scale (Data file resolution: 1 inch = 49 feet)
Updated Using Spring 2020 Aerial Photography at 1:200 scale (1 inch = 100 feet)
Further Updates Using City of Worcester Information

Considerable effort has been made to ensure the accuracy, correctness and timeliness of data presented here; however, this information is only as accurate as its sources and may not reflect the most current information. The City of Worcester, MA, assumes no liability for any errors, omissions or inaccuracies and makes no warranty, representation or guarantee of any kind, express or implied, as to the content or for any decisions made or actions taken or not taken by the user based upon any information provided on this map.






Austin Street

6/10/2026 11:32 AM



**Override 1
Hydrants**

-  City Owned Hydrant, in Service
-  Tax Parcels
-  Buildings

DATA SOURCE
 City of Worcester Geographic Information System
 Original Data - Digitized at 1:480 scale (Data true resolution: 1 inch = 49 feet)
 Updated Using Spring 2002 Aerial Photography at 1:200 scale (1 inch = 100 feet)
 Further Updates Using City of Worcester Information

Considerable effort has been made to ensure the accuracy, correctness and timeliness of data presented. However, this information is only as accurate as its sources and may not reflect the most current information. The City of Worcester, MA assumes no liability for any errors, omissions or inaccuracies and makes no warranty, representation or guarantee of any kind, express or implied, as to the content or for any decisions

Beaconsfield Road & Chesterfield Road



DATA SOURCES
 Basemap data: City of Worcester, MA Geographic Information System
 Original Data - Digitized at 1:480 scale (Data true resolution: 1 inch = 40 feet)
 Updated Using Spring 2003 Photography at 1 inch = 100 feet
 Further Updates Using City of Worcester Information
 Property Details: City of Worcester, MA Assessing Division

- Hydrants
- Parcels
- City

COORDINATE SYSTEM
 All map data is in the Massachusetts State Plane Coordinate system
 North American Datum of 1983, Massachusetts Mainland Zone (4151)
 Units are measured in Feet

DISCLAIMER
 Considerable effort has been made to ensure the accuracy, correctness and timeliness of data presented; however, this information is only as accurate as its sources and may not reflect the most current information. This map is a graphical representation of information for tax administration purposes only and does not represent a professional survey. The City of Worcester assumes no liability for any errors, omissions or inaccuracies and makes no warranty, representation or guaranty of any kind as to the content or for any decisions made or actions taken or not taken by the user based upon any information provided on this map.



Belmont Street #1



DATA SOURCES

Base map data: City of Worcester, MA Geographic Information System
Original Data - Digitized at 1:480 scale (Data true resolution: 1 inch = 40 feet)
Updated Using Spring 2003 Photography at 1 inch = 100 feet
Further Updates Using City of Worcester Information
Property Details - City of Worcester, MA Assessing Division

- Hydrant
- Parcel
- City

COORDINATE SYSTEM

All map data is in the Massachusetts State Plane Coordinate system,
North American Datum of 1983, Massachusetts Mainland Zone (4151)
Units are measured in Feet

DISCLAIMER

Considerable effort has been made to ensure the accuracy, correctness and timeliness of data presented; however, this information is only as accurate as its source and may not reflect the most current information. This map is a graphical representation of information for tax administration purposes only and does not represent a professional survey. The City of Worcester assumes no liability for any errors, omissions or inaccuracies and makes no warranty, representation or guaranty of any kind as to the content or for any decisions made or actions taken or not taken by the user based upon any information provided on this map.



Belmont Street #2



DATA SOURCES:
Basemap data: City of Worcester, MA Geographic Information System
Original Data - Digitized at 1:480 scale (Data true resolution: 1 inch = 40 feet)
Updated Using Spring 2003 Photography at 1 inch = 100 feet
Further Updates Using City of Worcester Information
Property Details: City of Worcester, MA Assessing Division

COORDINATE SYSTEM:
All map data is in the Massachusetts State Plane Coordinate system,
North American Datum of 1983, Massachusetts Mainland Zone (4151).
Units are measured in Feet.

DISCLAIMER:
Considerable effort has been made to ensure the accuracy, correctness, and timeliness of data presented; however, this information is only as accurate as its sources and may not reflect the most current information. This map is a graphical representation of information for tax administration purposes only and does not represent a professional survey. The City of Worcester assumes no liability for any errors, omissions or inaccuracies and makes no warranty, representation or guaranty of any kind as to the content or for any decisions made or actions taken or not taken by the user based upon any information provided on this map.



Belmont Street #3



DATA SOURCES
Basemap data: City of Worcester, MA Geographic Information System
Original Data - Digitized at 1:490 scale (Data true resolution: 1 inch = 40 feet)
Updated Using Spring 2003 Photography at 1 inch = 100 feet
Further Updates Using City of Worcester Information
Property Details: City of Worcester, MA Assessing Division

COORDINATE SYSTEM
All map data is in the Massachusetts State Plane Coordinate system
North American Datum of 1983, Massachusetts Mainland Zone (1415)
Units are measured in Feet

DISCLAIMER
Considerable effort has been made to ensure the accuracy, correctness and timeliness of data presented; however, this information is only as accurate as its sources and may not reflect the most current information. This map is a graphical representation of information for tax administration purposes only and does not represent a professional survey. The City of Worcester assumes no liability for any errors, omissions or inaccuracies and makes no warranty, representation or guaranty of any kind as to the content or for any decisions made or actions taken or not taken by the user based upon any information provided on this map.



Billings Square & Lower Hamilton Street █ Override 1
Hydrants

6/10/2026 11:41 AM

0 0.01 0.02 0.02 mi

City Owned Hydrant, In Service ◆

Tax Parcels

Buildings

N



DATA SOURCE:
 City of Worcester - Geographic Information System
 Original Data - Digitized at 1:480 scale (Data file resolution: 1 inch = 49 feet)
 Updated Using - Spring 2003 Aerial Photography at 1:200 scale (1 inch = 100 feet)
 Further Updates Using City of Worcester Information

Considerable effort has been made to ensure the accuracy, correctness and timeliness of data presented. However, this information is only as accurate as its sources and may not reflect the most current information. The City of Worcester MA assumes no liability for any errors, omissions or inaccuracies and makes no warranty, representation or guarantee of any kind, express or implied, as to the content or for any objectives.



Black Eagle

6/8/2026 4:38 PM



Override 1
Hydrants

City Owned Hydrant, in Service

Tax Parcels
Buildings

DATA SOURCE:
City of Worcester Geographic Information System
Original Data - Digitized at 1:480 scale (Data file resolution: 1 inch = 40 feet)
Updated Using Spring 2003 Aerial Photography at 1:200 scale (1 inch = 100 feet)
Further Updates Using City of Worcester Information

Considerable effort has been made to ensure the accuracy, correctness and timeliness of data presented; however, this information is only as accurate as its sources and may not reflect the most current information. The City of Worcester MA assumes no liability for any errors, omissions or inaccuracies and makes no warranty, representation or guarantee of any kind, express or implied, as to the content, or for any decisions made or actions taken or not taken by the user based upon any information provided on this map.

Blackstone Bike Path



DATA SOURCES
 Basemap data: City of Worcester, MA Geographic Information System
 Original Data - Digitized at 1:480 scale (Data true resolution: 1 inch = 40 feet)
 Updated Using Spring 2003 Photography at 1 inch = 100 feet
 Further Updates Using City of Worcester Information
 Property Details - City of Worcester, MA Assessing Division

- Hydrants
- Parcels
- City

COORDINATE SYSTEM
 All map data is in the Massachusetts State Plane Coordinate system,
 North American Datum of 1983, Massachusetts Meridian Zone (415 I)
 Units are measured in Feet

DISCLAIMER
 Considerable effort has been made to ensure the accuracy, correctness
 and timeliness of data presented; however, this information is only as
 accurate as its sources and may not reflect the most current information.
 This map is a graphical representation of information for tax administration
 purposes only and does not represent a professional survey. The City of
 Worcester assumes no liability for any errors, omissions or inaccuracies and
 makes no warranty, representation or guaranty of any kind as to the
 content of or any decisions made or actions taken or not taken by the
 user based upon any information provided on this map.

Blackstone Gateway Park



DATA SOURCES
 Basemap data - City of Worcester, MA Geographic Information System
 Original Data - Digitized at 1:480 scale (Data true resolution: 1 inch = 40 feet)
 Updated Using Spring 2003 Photography at 1 inch = 100 feet
 Further Updates Using City of Worcester Information
 Property Details - City of Worcester, MA Assessing Division

COORDINATE SYSTEM
 All map data is in the Massachusetts State Plane Coordinate system,
 North American Datum of 1983, Massachusetts Mainland Zone (4151)
 Units are measured in Feet

DISCLAIMER
 Considerable effort has been made to ensure the accuracy, correctness
 and timeliness of data presented; however, this information is only as
 accurate as its sources and may not reflect the most current information.
 This map is a graphical representation of information for tax administration
 purposes only and does not represent a professional survey. The City of
 Worcester assumes no liability for any errors, omissions or inaccuracies
 and makes no warranty, representation or guaranty of any kind as to the
 content or for any decisions made or actions taken or not taken by the
 user based upon any information provided on this map.



Blackstone Gateway Park #2

6/10/2026 11:50 AM



- Override 1 Hydrants
- ◆ City Owned Hydrant, in Service
- ◆ Private Hydrant
- Tax Parcels
- Buildings

DATA SOURCE
 City of Worcester Geographic Information System
 Original Data - Digitized at 1:486 scale (Data true resolution: 1 inch = 49' feet)
 Updated Using Spring 2003 Aerial Photography at 1:200 scale (1 inch = 160 feet)
 Further Updates Using City of Worcester Information

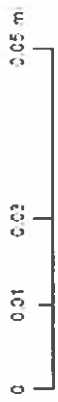
Considerable effort has been made to ensure the accuracy, correctness and timeliness of data presented, however, this information is only as accurate as its sources and may not reflect the most current information. The City of Worcester, MA assumes no liability for any errors, omissions or inaccuracies and makes no warranty, representation or guarantee of any kind, express or implied, as to the content or for any discrepancies.








Blackstone Gateway Park River

Override 1 Hydrants

6/10/2026 11:53 AM



-  Override 1 Hydrants
-  City Owned Hydrant, In Service
-  Private Hydrant
-  Tax Parcels
-  Buildings

DATA SOURCE: Geographic Information System
 City of Worcester: Original Data - Digitized at 1:480 scale (Data true resolution: 1 inch = 40 feet);
 Updated Using Spring 2002 Aerial Photography at 1:200 scale (1 inch = 100 feet)
 Further Updates Using City of Worcester Information

Considerable effort has been made to ensure the accuracy, correctness and timeliness of data presented; however, this information is only as accurate as its sources and may not reflect the most current information. The City of Worcester, MA assumes no liability for any errors, omissions or encroachments and makes no warranty, representation or guarantee of any kind, express or implied, as to the content or for any decisions



Boyce Square

6/8/2026 4:49 PM



Override 1
Hydrants

City Owned Hydrant, in Service

Tax Parcels
Buildings

DATA SOURCE
City of Worcester Geographic Information System
Original Data - Digitized at 1:480 scale (Data from Massachusetts, 1 inch = 40 feet)
Update: Using Spring 2020 Aerial Photography at 1:200 scale (1 inch = 100 feet)
Further Updates Using City of Worcester Information.

Considerable effort has been made to ensure the accuracy, correctness and freshness of data presented; however, this information is only as accurate as its source and may not reflect the most current information. The City of Worcester, MA assumes no liability for any errors, omissions or inaccuracies and makes no warranty, representation or guaranty of any kind, express or implied, as to the content or for any decisions made or actions taken or not taken by the user based upon any information provided on this map.



Brooks Street Bridge

Override 1 Hydrants

6/8/2026 4:46 PM



City Owned Hydrant, In Service
 Tax Parcels
 Buildings

DATA SOURCE:
 City of Worcester Geographic Information System
 Original Data - Digitized at 1:480 scale (Data from resolution: 1 inch = 48 feet)
 Updated Using Spring 2020 Aerial Photography at 1:200 scale (1 inch = 100 feet)
 Further Updates Using City of Worcester Information.

Considerable effort has been made to ensure the accuracy, correctness and timeliness of data presented however, this information is only as accurate as its sources and may not reflect the most current information. The City of Worcester, MA assumes no liability for any errors, omissions or inaccuracies and makes no warranty, representation or guarantee of any kind, express or implied, as to the content or for any decisions made or actions taken or not taken by the user based upon any information provided on this map.



Castle Park

Hydrants

Override 1

6/8/2026 4:52 PM



- City Owned Hydrant, in Service
- Tax Parcels
- Buildings

DATA SOURCE:
 City of Worcester Geographic Information Systems
 Original Data - Digitized at 1:480 scale (Data File Resolution: 1 inch = 49 feet)
 Updated Using Spring 2002 Aerial Photography at 1:200 scale (1 inch = 100 feet)
 Further Updates Using City of Worcester Information

Considerable effort has been made to ensure the accuracy, correctness and timeliness of data presented. However, this information is only as accurate as its sources and may not reflect the most current information. The City of Worcester, MA assumes no liability for any errors, omissions or inaccuracies and makes no warranty, representation or guarantee of any kind, express or implied, as to the content or for any decisions made or actions taken or not taken by the user based upon any information provided on this map.

Chamberlain Parkway



DATA SOURCES
 Basemap data: City of Worcester, MA Geographic Information System
 Original Data: Digitized at 1:480 scale (Data true resolution: 1 inch = 40 feet)
 Updated Using Spring 2003 Photography at 1 inch = 100 feet
 Further Updates Using City of Worcester Information
 Property Details: City of Worcester, MA Assessing Division

COORDINATE SYSTEM
 All map data is in the Massachusetts State Plane Coordinate system,
 North American Datum of 1983, Massachusetts Mainland Zone (4151).
 Units are measured in Feet.

DISCLAIMER
 Considerable effort has been made to ensure the accuracy, correctness
 and timeliness of data presented; however, this information is only as
 accurate as its sources and may not reflect the most current information.
 This map is a graphical representation of information for tax administration
 purposes only and does not represent a professional survey. The City of
 Worcester assumes no liability for any errors, omissions or inaccuracies and
 makes no warranty, representation or guarantee of any kind as to the
 content or for any decisions made or actions taken or not taken by the
 user based upon any information provided on this map.



Coal Mine Brook

6/8/2026 5:13 PM



Override 1 Hydrants

- Override 1
- City Owned Hydrant, in Service
- Tax Parcels
- Buildings

DATA SOURCE

City of Worcester Geographic Information System
 Original Data - Original at 1:480 scale (Data file resolution: 1 inch = 40 feet)
 Updated Using Street View 2020 Aerial Photography at 1:200 scale (1 inch = 100 feet)
 Further Updates Using City of Worcester Information

Considerable effort has been made to ensure the accuracy, correctness and timeliness of data presented; however, this information is only as accurate as its sources and may not reflect the most current information. The City of Worcester, MA, assumes no liability for any errors, omissions or inaccuracies and makes no warranty, representation or guarantee of any kind, express or implied, as to the content or for any decisions made or actions taken or not taken by the user based upon any information provided on this map.



Coes Pond Beach

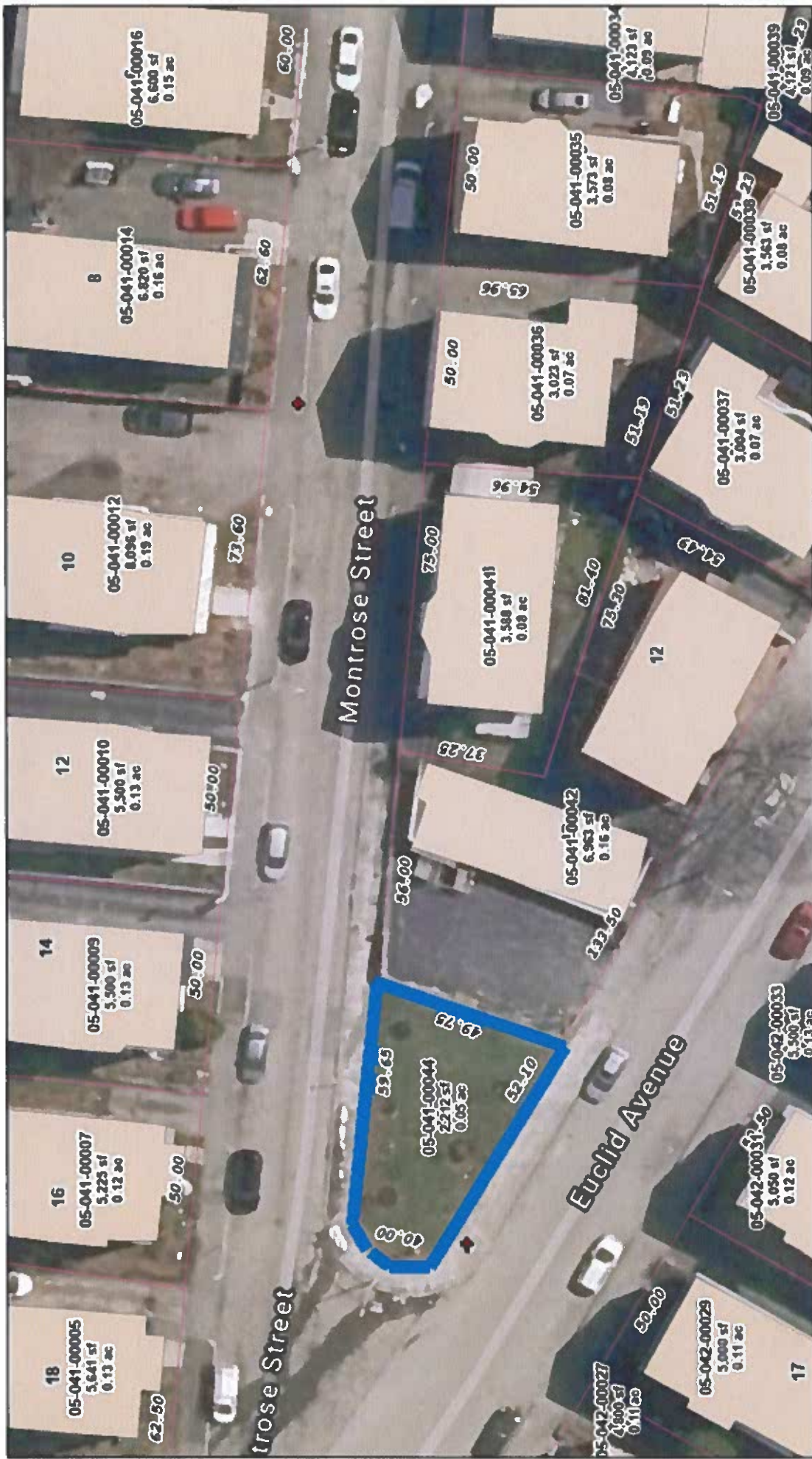
- Override 1
- Tax Parcels
- Buildings

6/10/2026 12:07 PM



DATA SOURCE:
 City of Worcester Geographic Information System
 Original Data - Digitized at 1:480 scale (Data true resolution: 1 inch = 49 feet)
 Updated Using Spring 2002 Aerial Photography at 1:200 scale (1 inch = 166 feet)
 Further Updates Using City of Worcester Information

Considerable effort has been made to ensure the accuracy, correctness and timeliness of data presented; however, this information is only as accurate as its sources and may not reflect the most current information. The City of Worcester, MA assumes no liability for any errors, omissions or inaccuracies and makes no warranty, representation or guarantee of any kind, express or implied, as to the content or for any decisions.



Deedy Square

6/8/2026 5:19 PM



Override 1
Hydrants

City Owned Hydrant, in
Service

Tax Parcels
Buildings

DATA SOURCE
City of Worcester Geographic Information Systems
Original Data Digitized at 1:480 scale (Data from resolution: 1 inch = 40 feet)
Updated Using Spring 2023 Aerial Photography at 1:1,200 scale (1 inch = 100 feet)
Further Updates Using City of Worcester Information.

Concordable effort has been made to ensure the accuracy, correctness and timeliness of data presented; however, this information is only as accurate as its source and may not reflect the most current information. The City of Worcester, MA assumes no liability for any errors, omissions or inaccuracies and makes no warranty, representation or guarantee of any kind, express or implied, as to the content or for any decisions made or actions taken or not taken by the user based upon any information provided on this map.

Eastern Avenue



DATA SOURCES
Basemap data: City of Worcester, MA Geographic Information System
Original Data: Digitized at 1:480 scale (Data true resolution: 1 inch = 40 feet)
Updated Using Spring 2003 Photography at 1 inch = 100 feet
Further Updates Using City of Worcester Information
Property Details: City of Worcester, MA Assessing Division

- Hydrants
- ▭ Parcels
- ▭ City

COORDINATE SYSTEM
All map data is in the Massachusetts State Plane Coordinate system,
North American Datum of 1983, Massachusetts Mainland Zone (4151)
Units are measured in Feet

DISCLAIMER
Considerable effort has been made to ensure the accuracy, correctness
and timeliness of data presented; however, this information is only as
accurate as its sources and may not reflect the most current information.
This map is a graphical representation of information for tax administration
purposes only and does not represent a professional survey. The City of
Worcester assumes no liability for any errors, omissions or inaccuracies
and makes no warranty, representation or guaranty of any kind as to the
content or for any decisions made or actions taken or not taken by the
user based upon any information provided on this map.



Foster Street #1



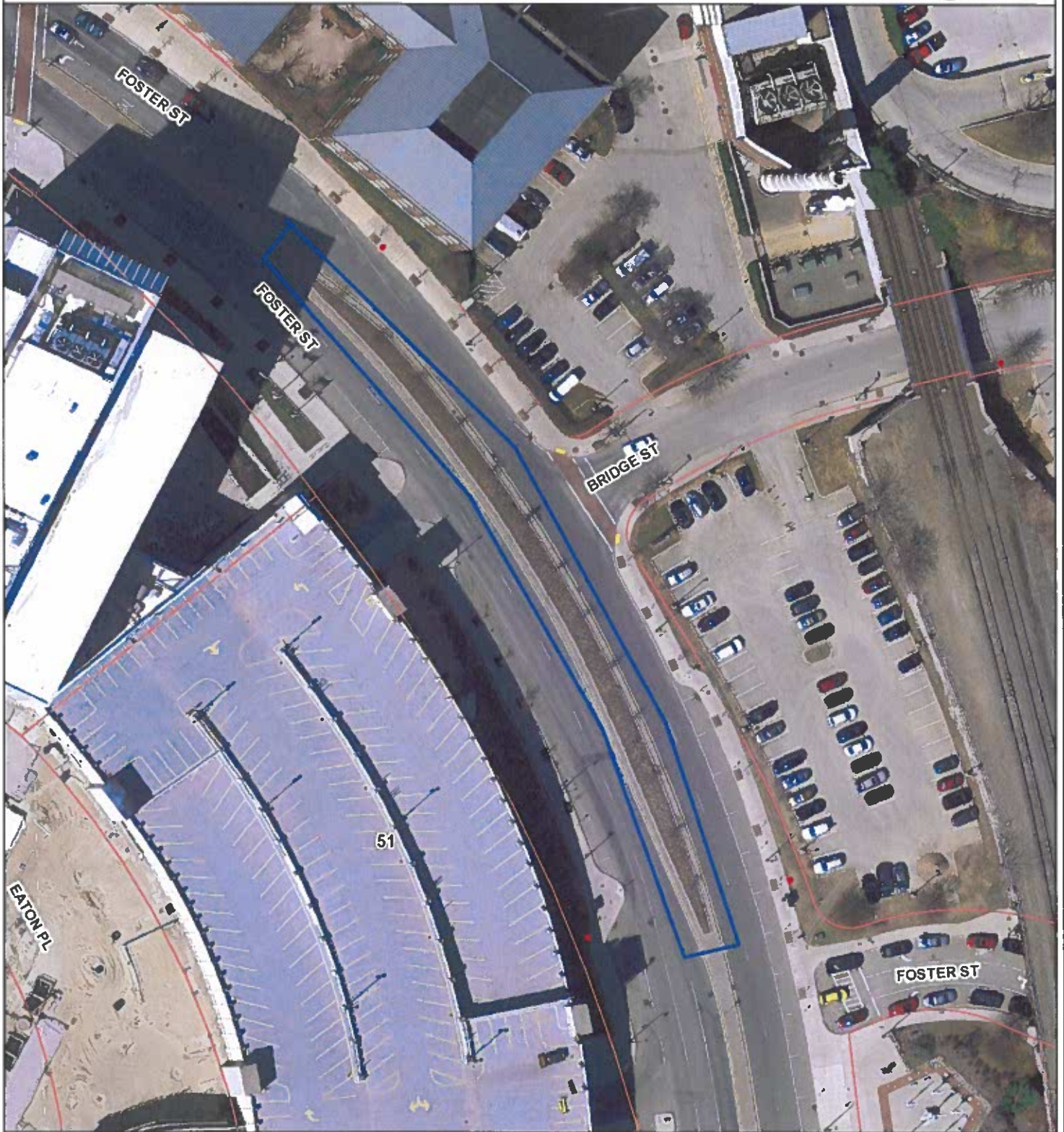
DATA SOURCES
Basemap data - City of Worcester, MA Geographic Information System
Original Data - Digitized at 1:450 scale (Data true resolution: 1 inch = 40 feet)
Updated Using Spring 2003 Photography at 1 inch = 100 feet
Further Updates Using City of Worcester Information
Property Details - City of Worcester, MA Assessing Division

- Hydrants
- Parcels
- City

COORDINATE SYSTEM:
All map data is in the Massachusetts State Plane Coordinate system,
North American Datum of 1983, Massachusetts Mainland Zone (4151)
Units are measured in Feet

DISCLAIMER
Considerable effort has been made to ensure the accuracy, correctness and timeliness of data presented; however, this information is only as accurate as its sources and may not reflect the most current information. This map is a graphical representation of information for tax administration purposes only and does not represent a professional survey. The City of Worcester assumes no liability for any errors, omissions or inaccuracies and makes no warranty, representation or guaranty of any kind as to the content or for any decisions made or actions taken or not taken by the user based upon any information provided on this map.

Foster Street #2



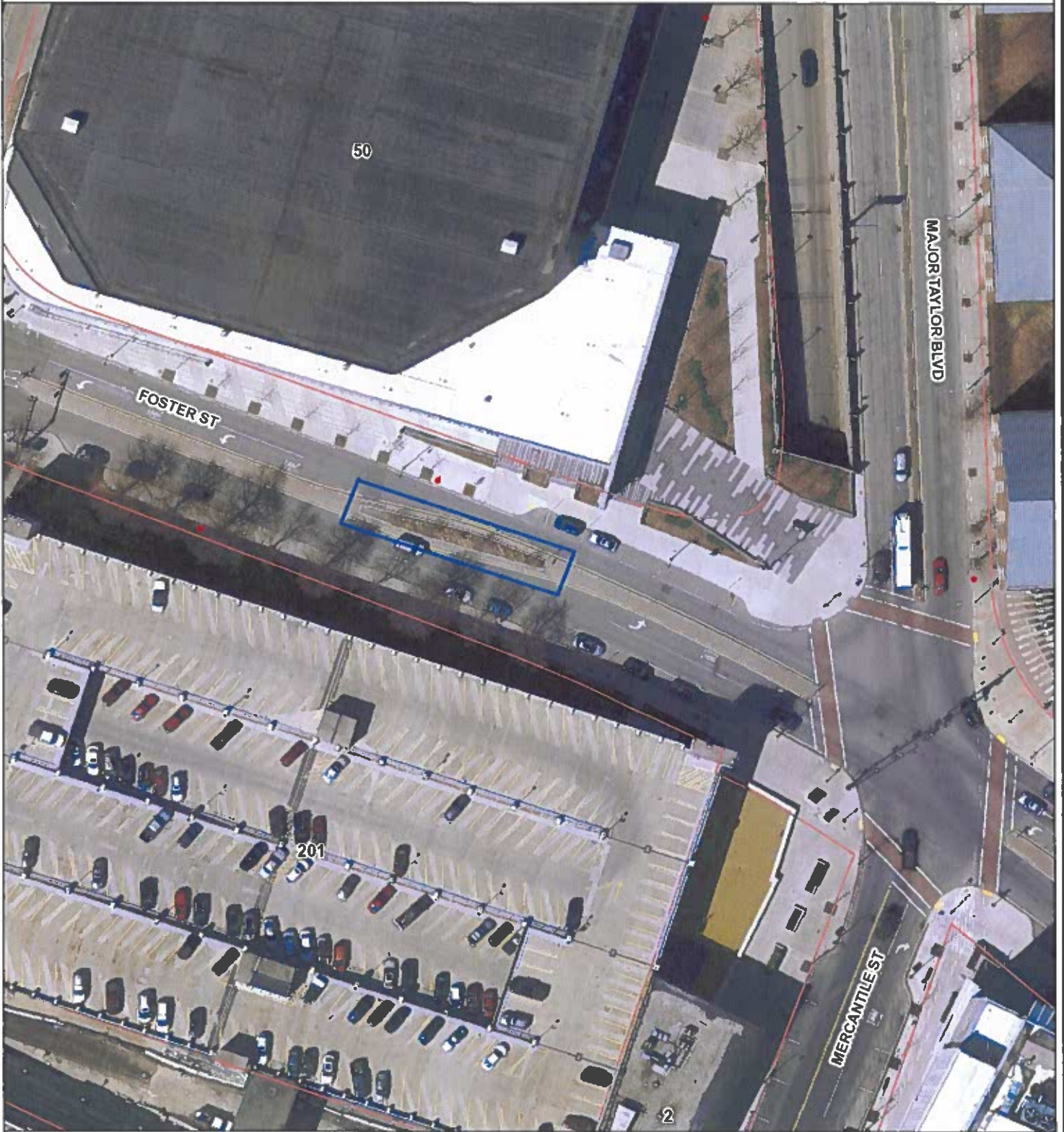
DATA SOURCES
Basemap data: City of Worcester, MA Geographic Information System
Original Data - Digitized at 1:480 scale (Data true resolution: 1 inch = 40 feet)
Updated Using Spring 2003 Photography at 1 inch = 100 feet
Further Updates Using City of Worcester Information
Property Details: City of Worcester, MA Assessing Division

- Hydrants
- ▭ Parcels
- ▭ City

COORDINATE SYSTEM
All map data is in the Massachusetts State Plane Coordinate system,
North American Datum of 1983, Massachusetts Mainland Zone (415)
Units are measured in Feet

DISCLAIMER
Considerable effort has been made to ensure the accuracy, correctness
and timeliness of data presented; however, this information is only as
accurate as its sources and may not reflect the most current information.
This map is a graphical representation of information for tax administration
purposes only and does not represent a professional survey. The City of
Worcester assumes no liability for any errors, omissions or inaccuracies
and makes no warranty, representation or guaranty of any kind as to the
content or for any decisions made or actions taken or not taken by the
user based upon any information provided on this map.

Foster Street #3



DATA SOURCES

Basemap data: City of Worcester, MA Geographic Information System
Original Data - Digitized at 1:480 scale (Data true resolution: 1 inch = 40 feet)
Updated Using Spring 2003 Photography at 1 inch = 100 feet
Further Updates Using City of Worcester Information
Property Details: City of Worcester, MA Assessing Division

- Hydrants
- Parcels
- City

COORDINATE SYSTEM

All map data is in the Massachusetts State Plane Coordinate system,
North American Datum of 1983, Massachusetts Mainland Zone (4151).
Units are measured in Feet.

DISCLAIMER

Considerable effort has been made to ensure the accuracy, correctness and timeliness of data presented; however, the information is only as accurate as its sources and may not reflect the most current information. This map is a graphical representation of information for tax administration purposes only and does not represent a professional survey. The City of Worcester assumes no liability for any errors, omissions or inaccuracies and makes no warranty, representation or guaranty of any kind as to the content or for any decisions made or actions taken or not taken by the user based upon any information provided on this map.

Foster Street #4



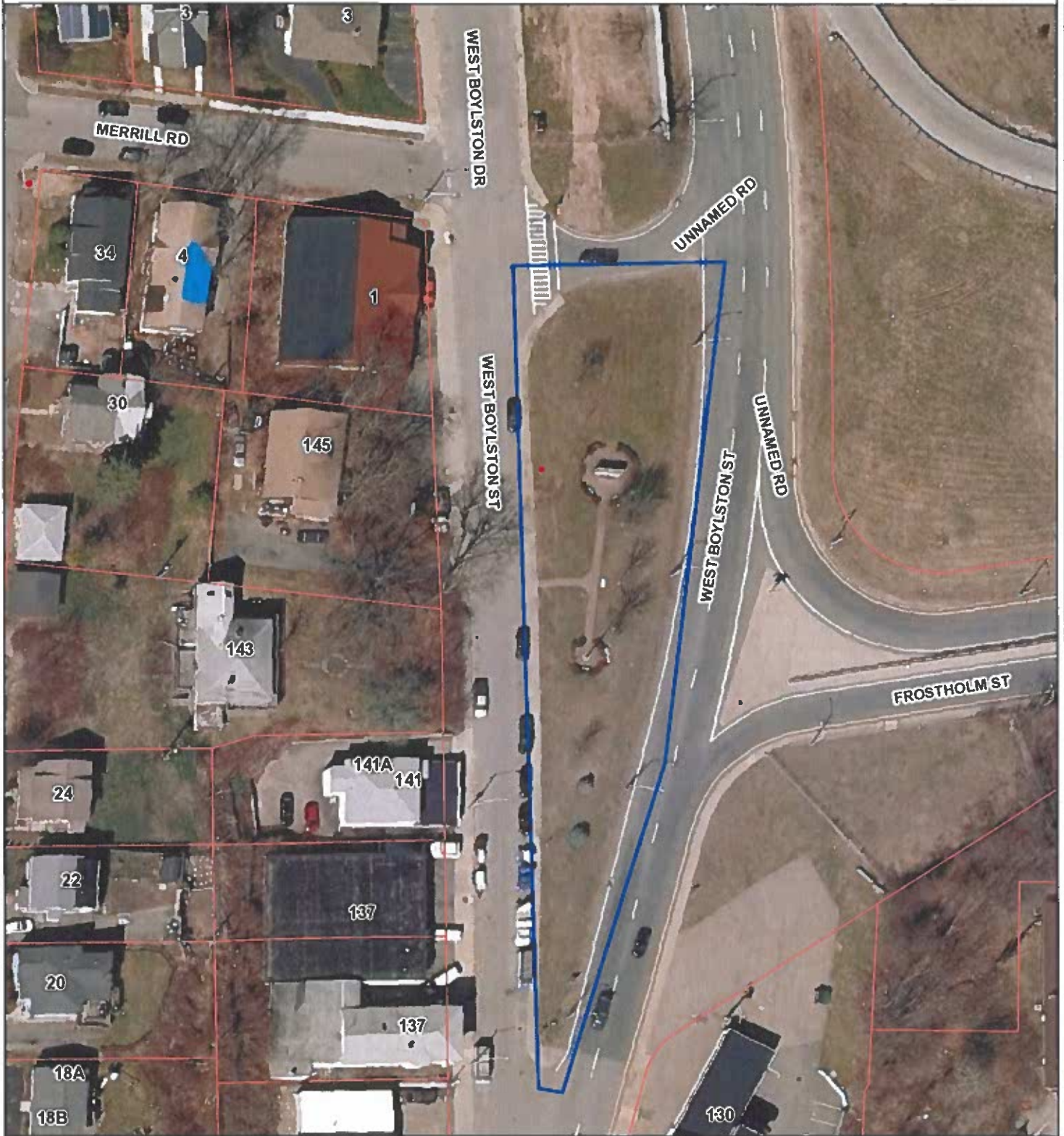
DATA SOURCES
 Base/plan data: City of Worcester, MA Geographic Information System
 Original Data - Digitized at 1:480 scale (Data true resolution: 1 inch = 40 feet)
 Updated Using Spring 2003 Photography at 1 inch = 100 feet
 Further Updates Using City of Worcester Information
 Property Details: City of Worcester, MA Assessing Division

- Hydrants
- Parcels
- City

COORDINATE SYSTEM
 All map data is in the Massachusetts State Plane Coordinate system,
 North American Datum of 1983, Massachusetts Meridian Zone (4151)
 Units are measured in Feet

DISCLAIMER
 Considerable effort has been made to ensure the accuracy, correctness
 and timeliness of data presented; however, the information is only as
 accurate as its sources and may not reflect the most current information.
 This map is a graphical representation of information for tax administration
 purposes only and does not represent a professional survey. The City of
 Worcester assumes no liability for any errors, omissions or inaccuracies
 and makes no warranty, representation or guaranty of any kind as to the
 content or for any decisions made or actions taken or not taken by the
 user based upon any information provided on this map.

Frosthalm Memorial Island



DATA SOURCES
 Base map data: City of Worcester, MA Geographic Information System
 Original Data: Digitized at 1:480 scale (Data true resolution: 1 inch = 40 feet)
 Updates Using Spring 2003 Photography at 1 inch = 100 feet
 Further Updates Using City of Worcester Information
 Property Details: City of Worcester, MA Assessing Division

- Hydrants
- Parcels
- City

COORDINATE SYSTEM
 All map data is in the Massachusetts State Plane Coordinate system,
 North American Datum of 1983, Massachusetts Mainland Zone (415).
 Units are measured in Feet, Vertical Datum NAVD83

DISCLAIMER
 Considerable effort has been made to ensure the accuracy, correctness
 and timeliness of data presented. However, this information is only as
 accurate as its sources and may not reflect the most current information.
 This map is a graphical representation of information for tax administration
 purposes only and does not represent a professional survey. The City of
 Worcester assumes no liability for any errors, omissions or inaccuracies
 and makes no warranty, representation or guaranty of any kind as to the
 content or for any decisions made or actions taken or not taken by the
 user based upon any information provided on this map.

Goddard Memorial Drive #1



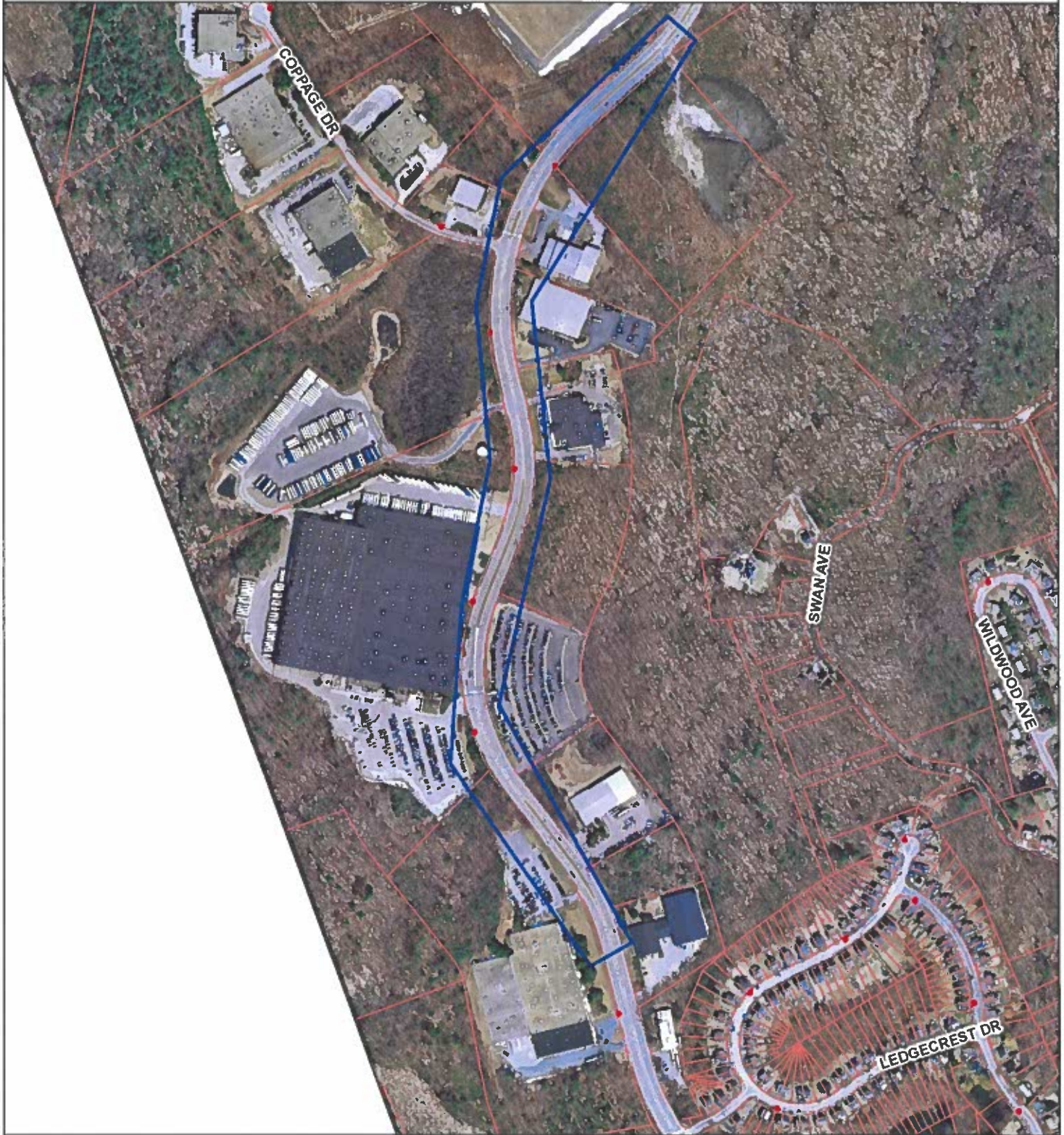
DATA SOURCES
 Basemap data: City of Worcester, MA Geographic Information System
 Original Data - Digitized at 1:480 scale (Data true resolution: 1 inch = 40 feet)
 Updated Using Spring 2003 Photography at 1 inch = 100 feet
 Further Updates Using City of Worcester Information
 Property Details: City of Worcester, MA Assessing Division

- Hydrants
- ▭ Parcels
- ◻ City

COORDINATE SYSTEM
 All map data is in the Massachusetts State Plane Coordinate system,
 North American Datum of 1983, Massachusetts Mainland Zone (4151).
 Units are measured in Feet.

DISCLAIMER
 Considerable effort has been made to ensure the accuracy, correctness
 and timeliness of data presented; however, the information is only as
 accurate as its sources and may not reflect the most current information.
 This map is a graphical representation of information for tax administration
 purposes only and does not represent a professional survey. The City of
 Worcester assumes no liability for any errors, omissions or inaccuracies
 and makes no warranty, representation or guarantee of any kind as to the
 content of or for any decisions made or actions taken or not taken by the
 user based upon any information provided on this map.

Goddard Memorial Drive #2



DATA SOURCES:
Basemap data: City of Worcester, MA Geographic Information System
Original Data: Digitized at 1:480 scale (Data true resolution: 1 inch = 40 feet)
Updated Using Spring 2003 Photography at 1 inch = 100 feet
Further Updates Using City of Worcester Information
Property Details: City of Worcester, MA Assessing Division

- Hydrants
- ▭ Parcels
- City

COORDINATE SYSTEM
All map data is in the Massachusetts State Plane Coordinate system,
North American Datum of 1983, Massachusetts Meridian Zone (4151)
Units are measured in Feet

DISCLAIMER
Considerable effort has been made to ensure the accuracy, correctness and timeliness of data presented; however, this information is only as accurate as its sources and may not reflect the most current information. This map is a graphical representation of information for tax administration purposes only and does not represent a professional survey. The City of Worcester assumes no liability for any errors, omissions or inaccuracies and makes no warranty, representation or guaranty of any kind as to the content or for any decisions made or actions taken or not taken by the user based upon any information provided on this map.

Goddard Memorial Drive #3

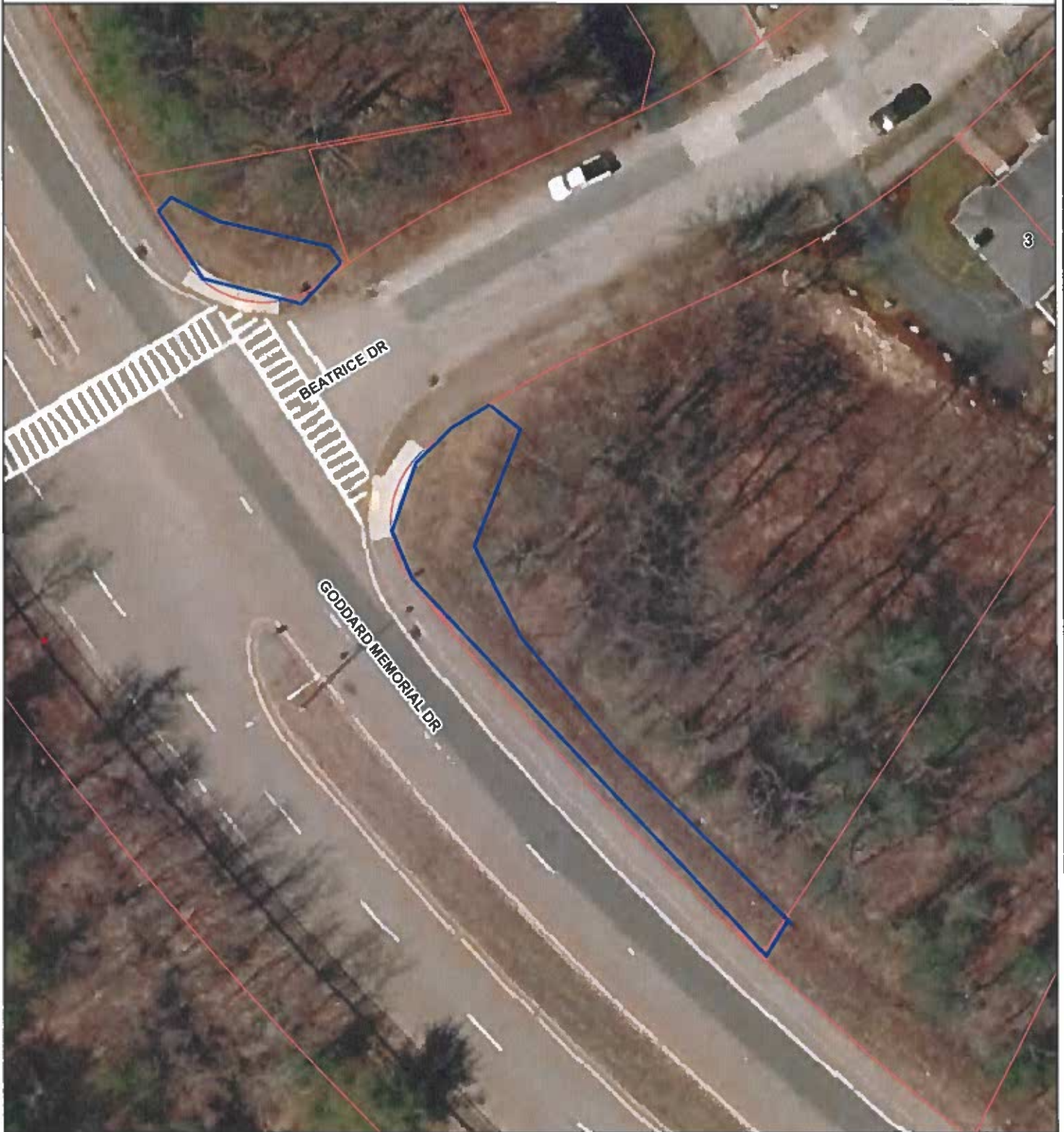


DATA SOURCES:
 Basemap data: City of Worcester, MA Geographic Information System
 Original Data: Digitized at 9'450 scale (Data true resolution: 1 inch = 40 feet)
 Updated Using Spring 2003 Photography at 1 inch = 100 feet
 Further Updates Using City of Worcester Information
 Property Details: City of Worcester, MA Assessing Division

COORDINATE SYSTEM:
 All map data is in the Massachusetts State Plane Coordinate system,
 North American Datum of 1983, Massachusetts Mainland Zone (4151).
 Units are measured in Feet

DISCLAIMER:
 Considerable effort has been made to ensure the accuracy, correctness and timeliness of data presented; however, this information is only as accurate as its source and may not reflect the most current information. This map is a graphical representation of information for tax administration purposes only and does not represent a professional survey. The City of Worcester assumes no liability for any errors, omissions or inaccuracies and makes no warranty, representation or guaranty of any kind as to the content or for any decisions made or actions taken or not taken by the user based upon any information provided on this map.

Goddard Drive @ Beatrice Drive



DATA SOURCES:

Basemap data: City of Worcester, MA Geographic Information System
Original Data - Digitized at 1:480 scale (Data true resolution: 1 inch = 40 feet)
Updated Using Spring 2003 Photography at 1 inch = 100 feet
Further Updates Using City of Worcester Information
Property Details: City of Worcester, MA Assessing Division

- Hydrants
- Parcels
- ▣ City

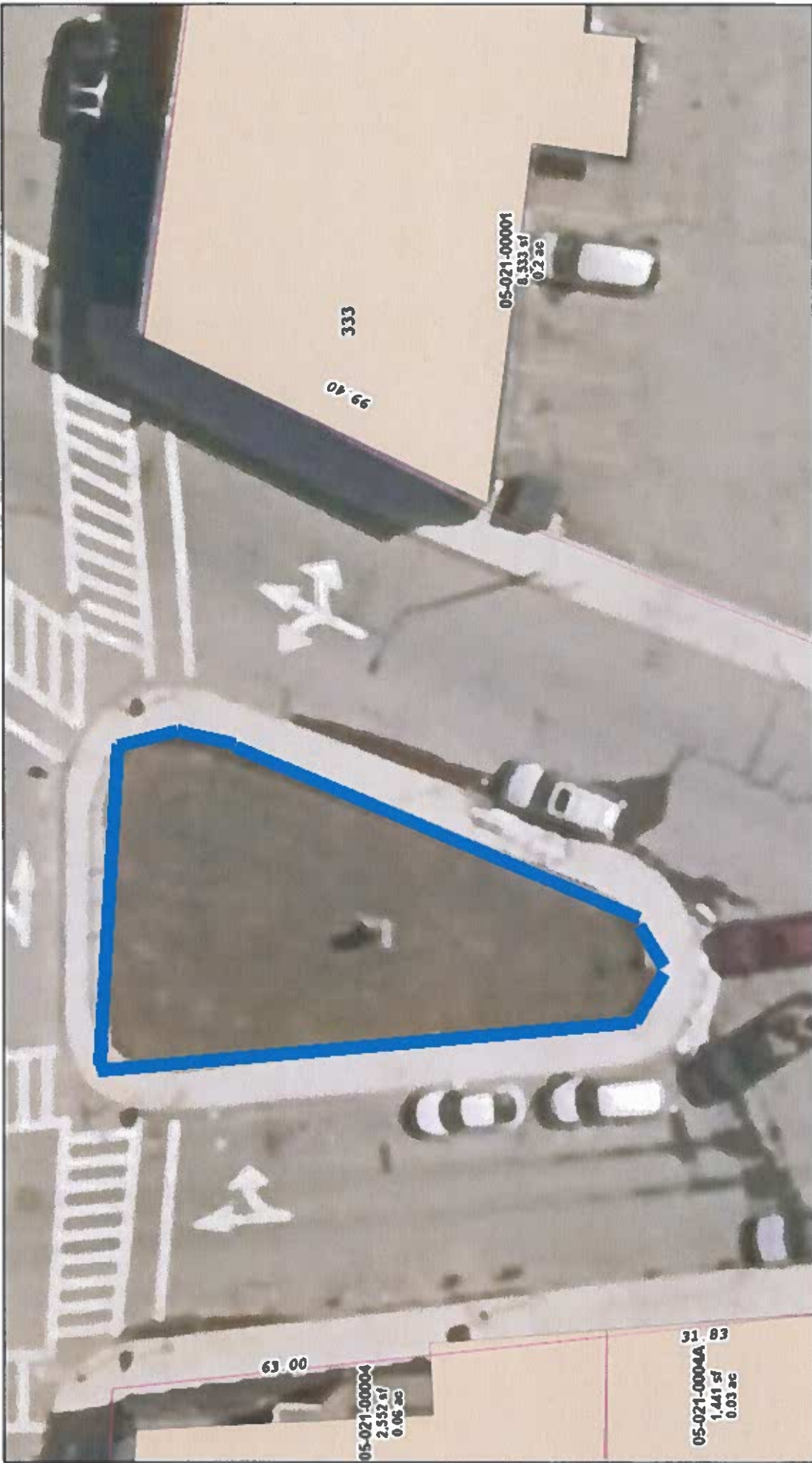
COORDINATE SYSTEM:

All map data is in the Massachusetts State Plane Coordinate system,
North American Datum of 1983, Massachusetts Mainland Zone (4151)
Units are measured in Feet, Vertical Datum NAVD83

DISCLAIMER:

Considerable effort has been made to ensure the accuracy, correctness and timeliness of data presented; however, this information is only as accurate as its sources and may not reflect the most current information. This map is a graphical representation of information for tax administration purposes only and does not represent a professional survey. The City of Worcester assumes no liability for any errors, omissions or inaccuracies and makes no warranty, representation or guaranty of any kind as to the content or for any decisions made or actions taken or not taken by the user based upon any information provided on this map.





Grabowski Square

6/8/2026 5:36 PM



- Override 1
- Tax Parcels
- Buildings

DATA SOURCE:
 City of Worcester Geographic Information System
 Current Data - Digitized at 1:480 scale (Data file resolution: 1 inch = 40 feet)
 Updated Using Spring 2003 Aerial Photography at 1:200 scale (1 inch = 100 feet)
 Further Updates Using City of Worcester Information

Considerable effort has been made to ensure the accuracy, correctness and timeliness of this information. However, this information is only as accurate as its sources and may not reflect the most current information. The City of Worcester, MA, assumes no liability for any errors, omissions or inaccuracies and makes no warranty, representation or guarantee of any kind, express or implied, as to the content or for any decisions made or actions taken or not taken by the user based upon any information provided on this map.

Grove St & Gold Star Island



DATA SOURCES

Basemap data: City of Worcester, MA Geographic Information System
Original Data - Digitized at 1:480 scale (Data true resolution: 1 inch = 40 feet)
Updated Using Spring 2003 Photography at 1 inch = 100 feet
Further Updates Using City of Worcester Information
Property Details: City of Worcester, MA Assessing Division

- Hydrants
- Parcels
- ▣ City

COORDINATE SYSTEM

All map data is in the Massachusetts State Plane Coordinate system
North American Datum of 1983, Massachusetts Mainland Zone (415)
Units are measured in Feet

DISCLAIMER

Considerable effort has been made to ensure the accuracy, correctness and timeliness of data presented, however, this information is only as accurate as its sources and may not reflect the most current information. This map is a graphical representation of information for tax administration purposes only and does not represent a professional survey. The City of Worcester assumes no liability for any errors, omissions or inaccuracies and makes no warranty, representation or guaranty of any kind as to the content or for any decisions made or actions taken or not taken by the user based upon any information provided on this map.



Hamilton Street Map #1



DATA SOURCES
Base map data: City of Worcester, MA Geographic Information System
Original Data: Digitized at 1:480 scale (Data true resolution: 1 inch = 40 feet)
Updated Using Spring 2003 Photography at 1 inch = 100 feet
Further Updates Using City of Worcester Information
Property Details: City of Worcester, MA Assessing Division

COORDINATE SYSTEM
All map data is in the Massachusetts State Plane Coordinate system,
North American Datum of 1983, Massachusetts Mainland Zone (#181).
Units are measured in Feet. Vertical Datum NAVD88

DISCLAIMER
Considerable effort has been made to ensure the accuracy, completeness and timeliness of data presented; however, this information is only as accurate as its sources and may not reflect the most current information. This map is a graphical representation of information for tax administration purposes only and does not represent a professional survey. The City of Worcester assumes no liability for any errors, omissions or inaccuracies and makes no warranty, representation or guaranty of any kind as to the content or for any decisions made or actions taken or not taken by the user based upon any information provided on this map.

Hamilton Street Map #2



DATA SOURCES
 Basemap data: City of Worcester, MA Geographic Information System
 Original Data - Digitized at 1:480 scale (Data true resolution: 1 inch = 40 feet)
 Updated Using Spring 2003 Photography at 1 inch = 100 feet
 Further Updates Using City of Worcester Information
 Property Details: City of Worcester, MA Assessing Division

COORDINATE SYSTEM
 All map data is in the Massachusetts State Plane Coordinate system,
 North American Datum of 1983, Massachusetts Meridian Zone (4151).
 Units are measured in Feet. Vertical Datum: NAVD83

DISCLAIMER
 Considerable effort has been made to ensure the accuracy, correctness
 and timeliness of data presented; however, the information is only as
 accurate as its sources and may not reflect the most current information.
 This map is a graphical representation of information for tax administration
 purposes only and does not represent a professional survey. The City of
 Worcester assumes no liability for any errors, omissions or inaccuracies
 and makes no warranty, representation or guaranty of any kind as to the
 content or for any decisions made or actions taken or not taken by the
 user based upon any information provided on this map.



Hamilton Street Banking's

6/9/2026 6:04 PM



- █ Override 1
- Tax Parcels
- Buildings

DATA SOURCE:
 City of Wrentham Geographic Information System
 Original Data - Digitized at 1:480 scale (Data from resolution: 1 inch = 40 feet)
 Updated Using Spring 2000 Aerial Photography at 1:200 scale (1 inch = 100 feet)
 Further Updates Using City of Wrentham Information.

Considerable effort has been made to ensure the accuracy, correctness and timeliness of data presented; however, this information is only as accurate as its source and may not reflect the most current information. The City of Wrentham, MA, assumes no liability for any errors, omissions or inaccuracies and makes no warranty, representation or guarantee of any kind, express or implied, as to the content or for any decisions made or actions based or not taken by the user based upon any information provided on this map.

Hapgood - Brooks Memorial Island



DATA SOURCES:
Basemap data - City of Worcester, MA Geographic Information System
Original Data - Digitized at 1:480 scale (Data true resolution: 1 inch = 40 feet)
Updated Using Spring 2003 Photography at 1 inch = 100 feet
Further Updates Using City of Worcester Information
Property Details: City of Worcester, MA Assessing Division

- Hydrants
- ▭ Parcels
- ◻ City

COORDINATE SYSTEM:
All map data is in the Massachusetts State Plane Coordinate system,
North American Datum of 1983, Massachusetts Mainland Zone (4151)
Units are measured in Feet, Vertical Datum NAVD88

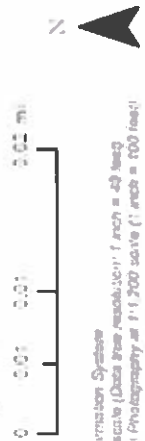
DISCLAIMER:
Considerable effort has been made to ensure the accuracy, correctness and timeliness of data presented; however, this information is only as accurate as its sources and may not reflect the most current information. This map is a graphical representation of information for tax administration purposes only and does not represent a professional survey. The City of Worcester assumes no liability for any errors, omissions or inaccuracies and makes no warranty, representation or guaranty of any kind as to the content or for any decisions made or actions taken or not taken by the user based upon any information provided on this map.





Indian Hill Square

6/9/2026 6:13 PM

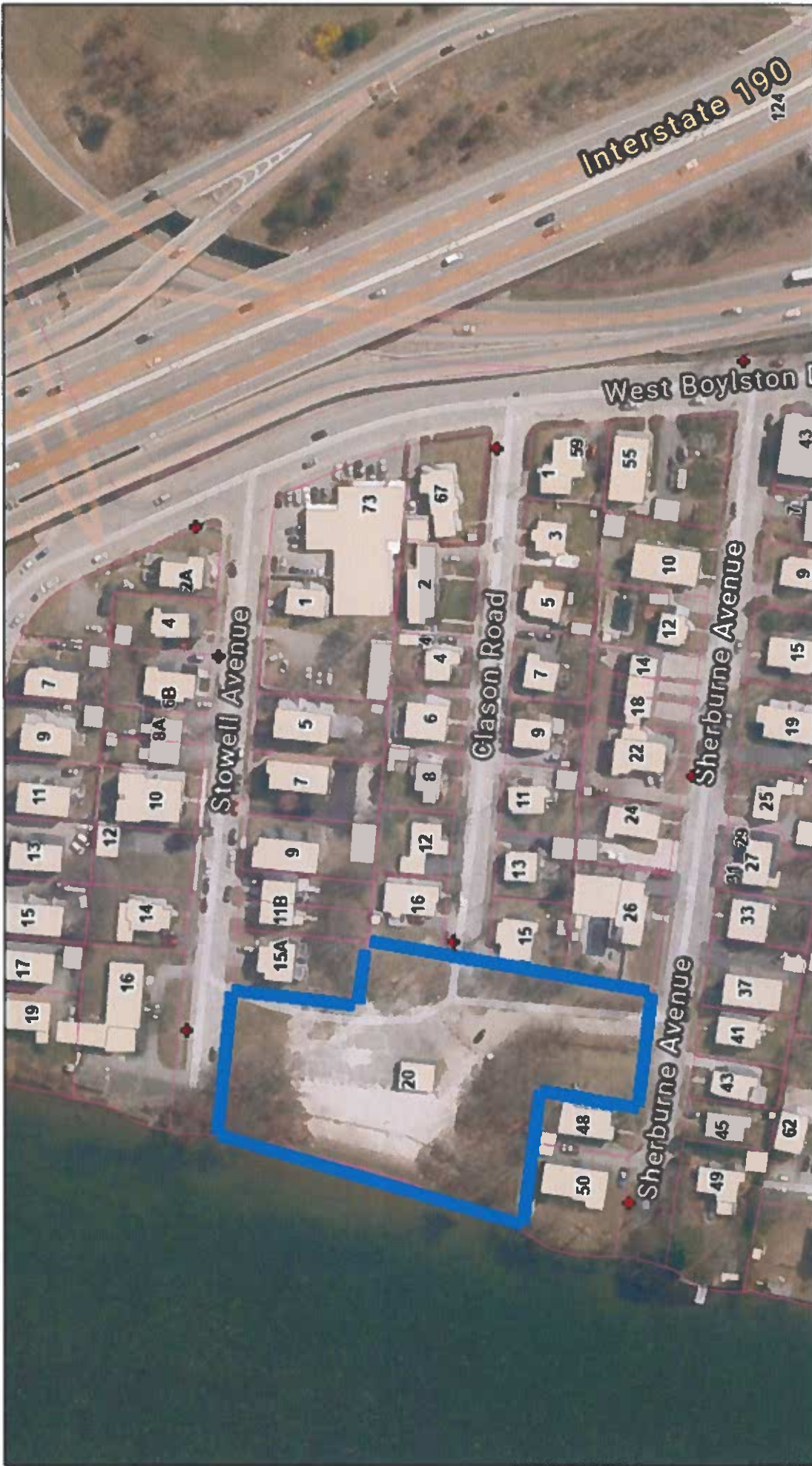


DATA SOURCE:
 City of Worcester Geographic Information System
 Original Data - Digitized at 1:480 scale (Data from resolution 1 inch = 48 feet)
 Updated Using Spring 2003 Aerial Photography at 1:1,200 scale (1 inch = 100 feet)
 Further Updates Using City of Worcester Information

Considerable effort has been made to ensure the accuracy, completeness and timeliness of data presented; however, this information is only as accurate as its sources and may not reflect the most current information. The City of Worcester, MA assumes no liability for any errors, omissions or inaccuracies and makes no warranty, representation or guarantee of any kind, express or implied, as to the content or for any decisions made or actions taken or not taken by the user based upon any information provided on this map.

Override 1 Hydrants

- ◆ City Owned Hydrant, in Service
- Tax Parcels
- Buildings



Indian Lake Beach

6/9/2026 6:08 PM



Override 1

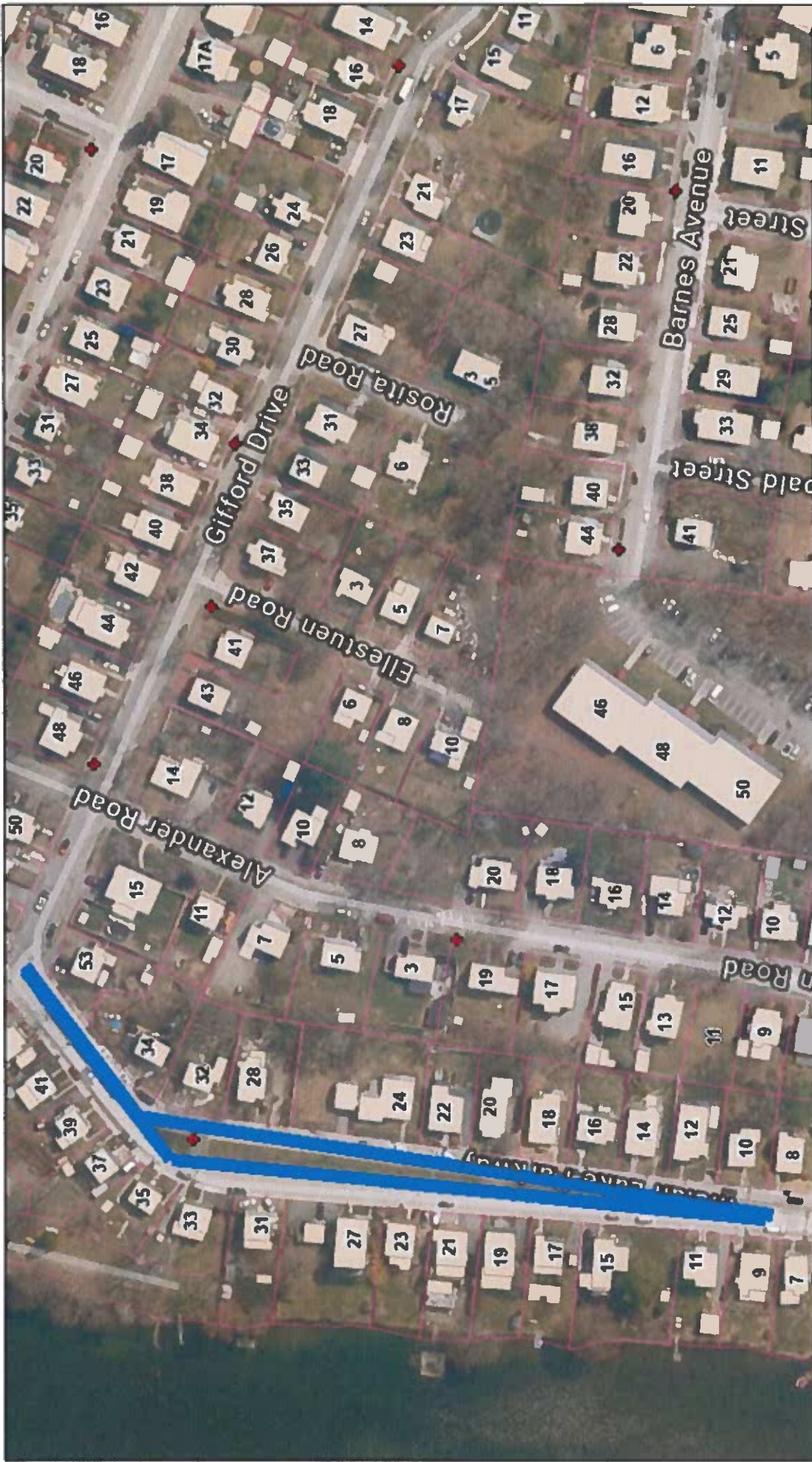
Hydrants

City Owned Hydrant, in Service

-  City Owned Hydrant, in Service
-  Tax Parcels
-  Buildings

DATA SOURCE:
 City of Worcester Geographic Information System
 Original Data - Digitized at 1:480 scale (Data from resolution 1 inch = 40 feet)
 Updated Using Spring 2023 Aerial Photography at 1:200 scale (1 inch = 100 feet)
 Further Updates Using City of Worcester Information.

Considerable effort has been made to ensure the accuracy, correctness and timeliness of data presented; however, this information is only as accurate as its sources and may not reflect the most current information. The City of Worcester, MA assumes no liability for any errors, omissions or inaccuracies and makes no warranty, representation or guarantee of any kind, express or implied, as to the content or for any decisions made or actions taken or not taken by the user based upon any information provided on this map.





Indian Lake Parkway

Override 1
Hydrants

6/9/2026 6:10 PM



-  City Owned Hydrant, in Service
-  Tax Parcels
-  Buildings

DATA SOURCE:
City of Worcester Geographic Information System
Original Data - Digitized at 1:480 scale (Data was resolution: 1 inch = 40 feet)
Updated Using Spring 2000 Aerial Photography at 1:200 scale (1 inch = 100 feet).
Further Updates Using City of Worcester Information.

Considerable effort has been made to ensure the accuracy, correctness and timeliness of data presented; however, this information is only as accurate as its sources and may not reflect the most current information. The City of Worcester, MA assumes no liability for any errors, omissions or inaccuracies and makes no warranty, representation or guaranty of any kind, express or implied, as to the content or for any decisions made or actions taken or not taken by the user based upon any information provided on this map.








Institute Park Fire Department HQ

6/9/2026 6:22 PM

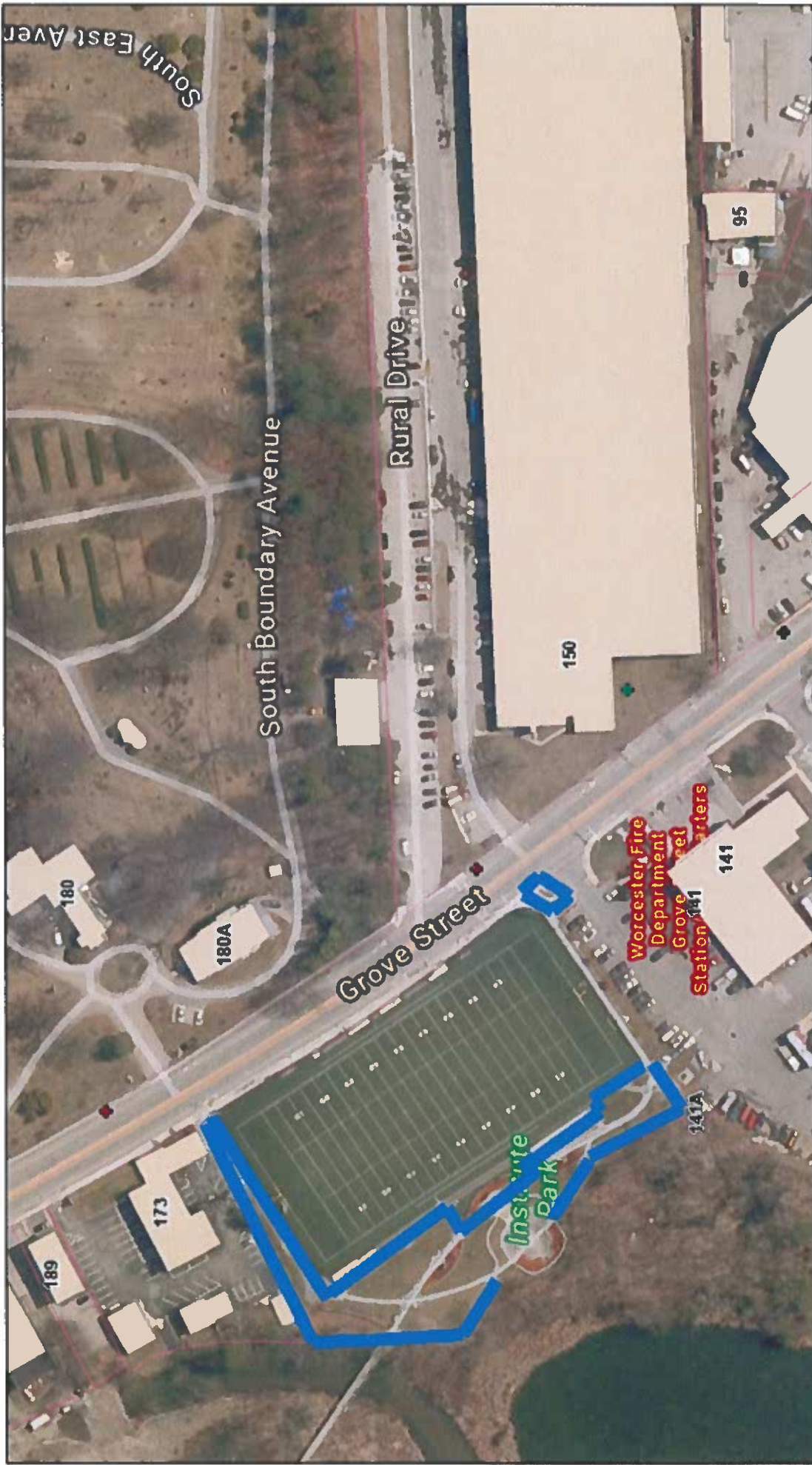


Override 1 Hydrants

-  City Owned Hydrant, in Service
-  City Owned Hydrant, Out of Service
-  Private Hydrant
-  Tax Parcels
-  Buildings

DATA SOURCE:
City of Worcester Geographic Information System
Original Data - Digitized at 1:480 scale (Data from resolution: 1 inch = 49 feet)
Updated Using Spring 2023 Aerial Photography at 1:200 scale (1 inch = 100 feet)
Further Updates Using City of Worcester Information

Considerable effort has been made to ensure the accuracy, correctness and timeliness of data presented however, this information is only as accurate as its sources and may not reflect the most current information. The City of Worcester, MA assumes no liability for any errors, omissions or inaccuracies and makes no warranty, representation or guarantee of any kind, express or implied, as to the content or for any decisions made or actions taken or not taken by the user based upon any information provided on this map.



Institute Park (Fire Fighter Memorial)

6/9/2026 6:26 PM



Override 1 Hydrants

- ◆ City Owned Hydrant, In Service
- ◆ City Owned Hydrant, Out of Service
- ◆ Private Hydrant
- Tax Parcels
- Buildings

DATA SOURCE
 City of Worcester Geographic Information System
 Original Data - Digitized at 1:450 scale (Data file resolution 1 inch = 40 feet)
 Updated Using Spring 2000 Aerial Photography at 1:1,200 scale (1 inch = 100 feet)
 Further Updates Using City of Worcester Information.

Considerable effort has been made to ensure the accuracy, correctness and timeliness of data presented; however, this information is only as accurate as its sources and may not reflect the most current information. The City of Worcester, MA assumes no liability for any errors, omissions or inaccuracies and makes no warranty, representation or guaranty of any kind, express or implied, as to the content, or for any decisions made or actions taken or not taken by the user based upon any information provided on this map.



Kalmar St Banking's

6/9/2026 6:33 PM



Override 1 Hydrants

- ◆ City Owned Hydrant, in Service
- Tax Parcels
- Buildings

DATA SOURCE:
 City of Worcester Geographic Information System
 Original Data - Digitized at 1:480 scale (Data true resolution: 1 inch = 48 feet)
 Updated Using Spring 2020 Aerial Photography at 1:200 scale (1 inch = 100 feet)
 Further Updated Using City of Worcester Information

Considerable effort has been made to ensure the accuracy, correctness and timeliness of data presented here; however, this information is only as accurate as its sources and may not reflect the most current information. The City of Worcester, MA assumes no liability for any errors, omissions or inaccuracies and makes no warranty, representation or guarantee of any kind, express or implied, as to the content of or for any decisions made or actions taken or not taken by the user based upon any information provided on this map.



Lake Ave Medians

- Override 1
- Tax Parcels
- Buildings

6/9/2025 6:29 PM



DATA SOURCE:
 City of Worcester Geographic Information Systems
 Original Data - Digitized at 1:500 scale (Data true resolution: 1 inch = 40 feet)
 Updated Using Spring 2020 Aerial Photography at 1:200 scale (1 inch = 100 feet)
 Further Updates Using City of Worcester Information

Considerable effort has been made to ensure the accuracy, correctness and timeliness of data presented; however, this information is only as accurate as its sources and may not reflect the most current information. The City of Worcester, MA, assumes no liability for any errors, omissions or inaccuracies and makes no warranty, representation or quality of any kind, express or implied, as to the content or for any decisions made or actions taken or not taken by the user based upon any information provided on this map.



Liberty St @ Glen St

Override 1
Hydrants

6/10/2026 1:40 PM



- City Owned Hydrant, In Service
- Tax Parcels
- Buildings

DATA SOURCE: Geographic Information System
 City of Worcester
 Original Data - Digitized at 1:480 scale (Data true resolution: 1 inch = 49 feet)
 Updated Using Spring 2002 Aerial Photography at 1:250 scale (1 inch = 150 feet)
 Further Updates Using City of Worcester Information

Considerable effort has been made to ensure the accuracy, correctness and timeliness of this information. However, this information is only as accurate as its sources and may not reflect the most current information. The City of Worcester, MA assumes no liability for any errors, omissions or inaccuracies and makes no warranty, representation or guarantee of any kind, express or implied, as to the content or for any decisions.

Lincoln Street #1



DATA SOURCES:
Basemap data: City of Worcester, MA Geographic Information System
Original Data - Digitized at 1:480 scale (Data true resolution: 1 inch = 40 feet)
Updated Using Spring 2003 Photography at 1 inch = 100 feet
Further Updates Using City of Worcester Information
Property Details: City of Worcester, MA Assessing Division

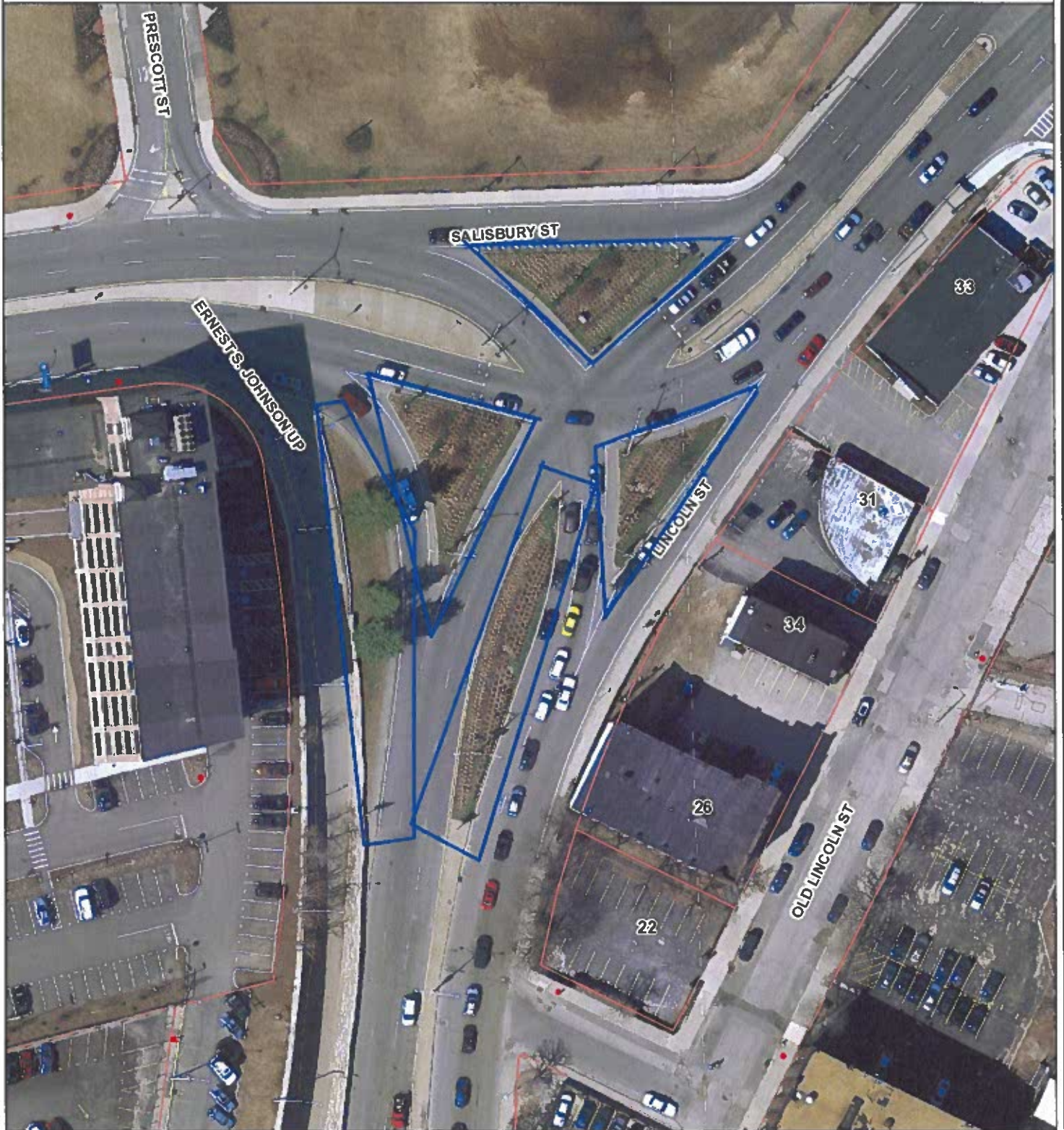
COORDINATE SYSTEM:
All map data is in the Massachusetts State Plane Coordinate system,
North American Datum of 1983, Massachusetts Mainland Zone (411).
Units are measured in Feet

DISCLAIMER:
Considerable effort has been made to ensure the accuracy, correctness and timeliness of data presented; however, the information is only as accurate as its sources and may not reflect the most current information. This map is a graphical representation of information for tax administration purposes only and does not represent a professional survey. The City of Worcester assumes no liability for any errors, omissions or inaccuracies and makes no warranty, representation or guaranty of any kind as to the content or for any decisions made or actions taken or not taken by the user based upon any information provided on this map.

- Hydrant
- Parcels
- City



Lincoln Street #2



DATA SOURCES:

Basemap data: City of Worcester, MA Geographic Information System
 Original Data - Digitized at 1:480 scale (Data true resolution 1 inch = 40 feet)
 Updated Using Spring 2003 Photography at 1 inch = 100 feet
 Further Updates Using City of Worcester Information
 Property Details: City of Worcester, MA Assessing Division

- Hydrants
- ▭ Parcels
- ▭ City

COORDINATE SYSTEM:

All map data is in the Massachusetts State Plane Coordinate system, North American Datum of 1983, Massachusetts Mainland Zone (4151). Units are measured in Feet.

DISCLAIMER:

Considerable effort has been made to ensure the accuracy, correctness and timeliness of data presented; however, the information is only as accurate as its sources and may not reflect the most current information. This map is a graphical representation of information for tax administration purposes only and does not represent a professional survey. The City of Worcester assumes no liability for any errors, omissions or inaccuracies and makes no warranty, representation or guaranty of any kind as to the content or for any decisions made or actions taken or not taken by the user based upon any information provided on this map.



Lincoln Street #3



DATA SOURCES

Basemap data: City of Worcester, MA Geographic Information System
Original Data - Digitized at 1:480 scale (Data true resolution: 1 inch = 40 feet)
Updated Using Spring 2003 Photography at 1 inch = 100 feet
Further Updates Using City of Worcester Information
Property Details: City of Worcester, MA Assessing Division

- Hydrants
- ▭ Parcels
- ▣ City

COORDINATE SYSTEM:

All map data is in the Massachusetts State Plane Coordinate system,
North American Datum of 1983, Massachusetts Mainland Zone (4151)
Units are measured in Feet.

DISCLAIMER:

Considerable effort has been made to ensure the accuracy, correctness and timeliness of data presented, however, this information is only as accurate as its sources and may not reflect the most current information. This map is a graphical representation of information for tax administration purposes only and does not represent a professional survey. The City of Worcester assumes no liability for any errors, omissions or inaccuracies and makes no warranty, representation or guaranty of any kind as to the content or for any decisions made or actions taken or not taken by the user based upon any information provided on this map.





Lincoln Street @ Boylston

6/10/2026 11:04 AM



**Override 1
Hydrants**

City Owned Hydrant, in Service

Tax Parcels
Buildings

DATA SOURCE:
City of Worcester Geographic Information System
Census Data - Current as of 2020 (Data File resolution: 1 inch = 49 feet)
Aerial Imagery Spring 2020 Aerial Photography at 1:200 scale (1 inch = 100 feet)
Further Updates Using City of Worcester Information

Conspirable effort has been made to ensure the accuracy, correctness and timeliness of data presented. However, this information is only as accurate as its source and may not reflect the most current information. The City of Worcester, MA assumes no liability for any errors, omissions or inaccuracies and makes no warranty, representation or guarantee of any kind, express or implied, as to the content, or for any decisions made or actions based or not taken by the user based upon any information provided on this map.



Lincoln St Rotary

6/9/2026 6:41 PM



Override 1

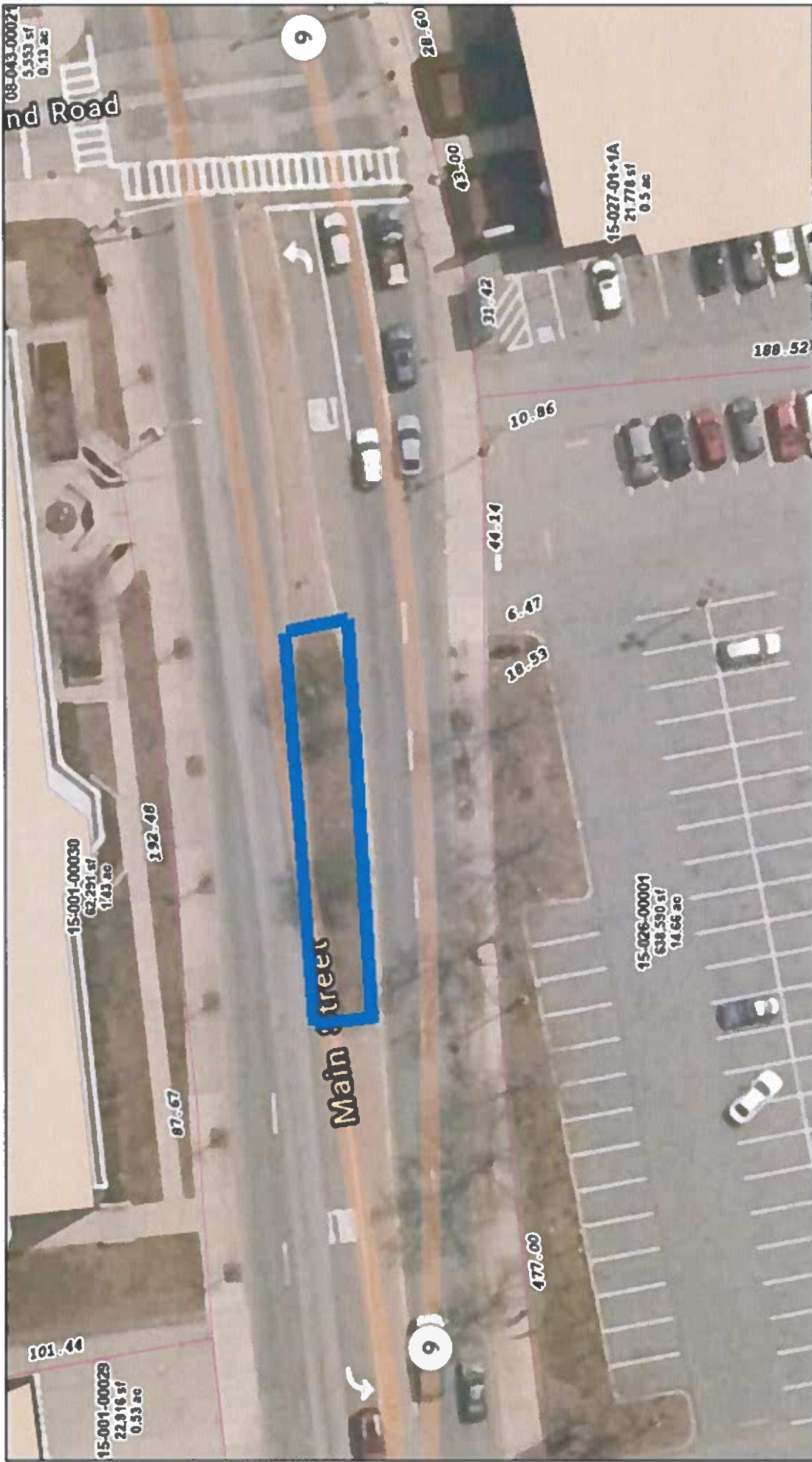
Hydrants

City Owned Hydrant, in Service

Tax Parcels
Buildings

DATA SOURCE:
City of Worcester Geographic Information System
Original Data: Digitized at 1:480 scale (Data file resolution: 1 inch = 400 feet)
Updated Using Spring 2000 Aerial Photography at 1:1,200 scale (1 inch = 100 feet)
Further Updates Using City of Worcester Information.

Considerable effort has been made to ensure the accuracy, correctness and timeliness of data presented; however, this information is only as accurate as its source and may not reflect the most current information. The City of Worcester, MA, assumes no liability for any errors, omissions or inaccuracies and makes no warranty, representation or guarantee of any kind, express or implied, as to the content or for any decisions made or actions taken or not taken by the user based upon any information presented on this map.



Main St (Gates Lane School)

6/9/2026 6:47 PM



- Override 1
- Tax Parcels
- Buildings

DATA SOURCE:
City of Worcester Geographic Information System
Original Data - Digitized at 1:40 scale (Data from Assessor: 1 inch = 40 feet)
Updated Using Spring 2003 Aerial Photography at 1:200 scale (1 inch = 100 feet)
Further Updates Using City of Worcester Information

Continable effort has been made to ensure the accuracy, completeness and timeliness of data presented however, this information is only as accurate as its sources and may not reflect the most current information. The City of Worcester, MA assumes no liability for any errors, omissions or inaccuracies and makes no warranty, representation or guaranty of any kind, express or implied, as to the content or for any decisions made or actions taken or not taken by the user based upon any information provided on this map.

McKeon Rd & Route 146

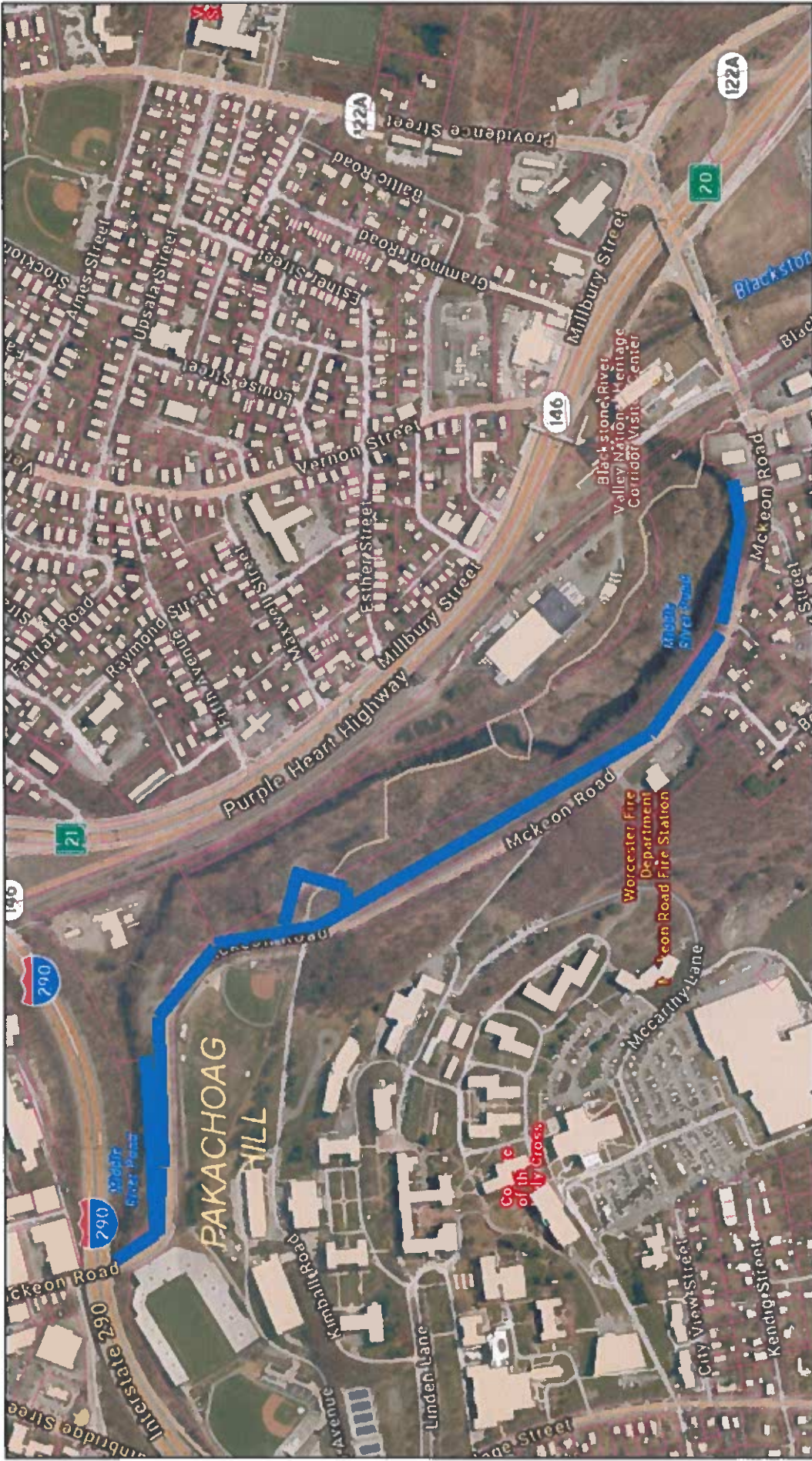


DATA SOURCES
 Basemap data: City of Worcester, MA Geographic Information System
 Original Data: Digitized at 1:480 scale (Data true resolution: 1 inch = 40 feet)
 Updated Using Spring 2003 Photography at 1 inch = 100 feet
 Further Updates Using City of Worcester Information
 Property Details: City of Worcester, MA Assessing Division

- Hydrants
- Parcels
- City

COORDINATE SYSTEM
 All map data is in the Massachusetts State Plane Coordinate system,
 North American Datum of 1983, Massachusetts Meridian Zone (415).
 Units are measured in Feet.

DISCLAIMER
 Considerable effort has been made to ensure the accuracy, correctness
 and timeliness of data presented, however, this information is only as
 accurate as its sources and may not reflect the most current information.
 This map is a graphical representation of information for tax administration
 purposes only and does not represent a professional survey. The City of
 Worcester assumes no liability for any errors, omissions or inaccuracies
 and makes no warranty, representation or guaranty of any kind as to the
 content or for any decisions made or actions taken or not taken by the
 user based upon any information provided on this map.



Mckeen Rd

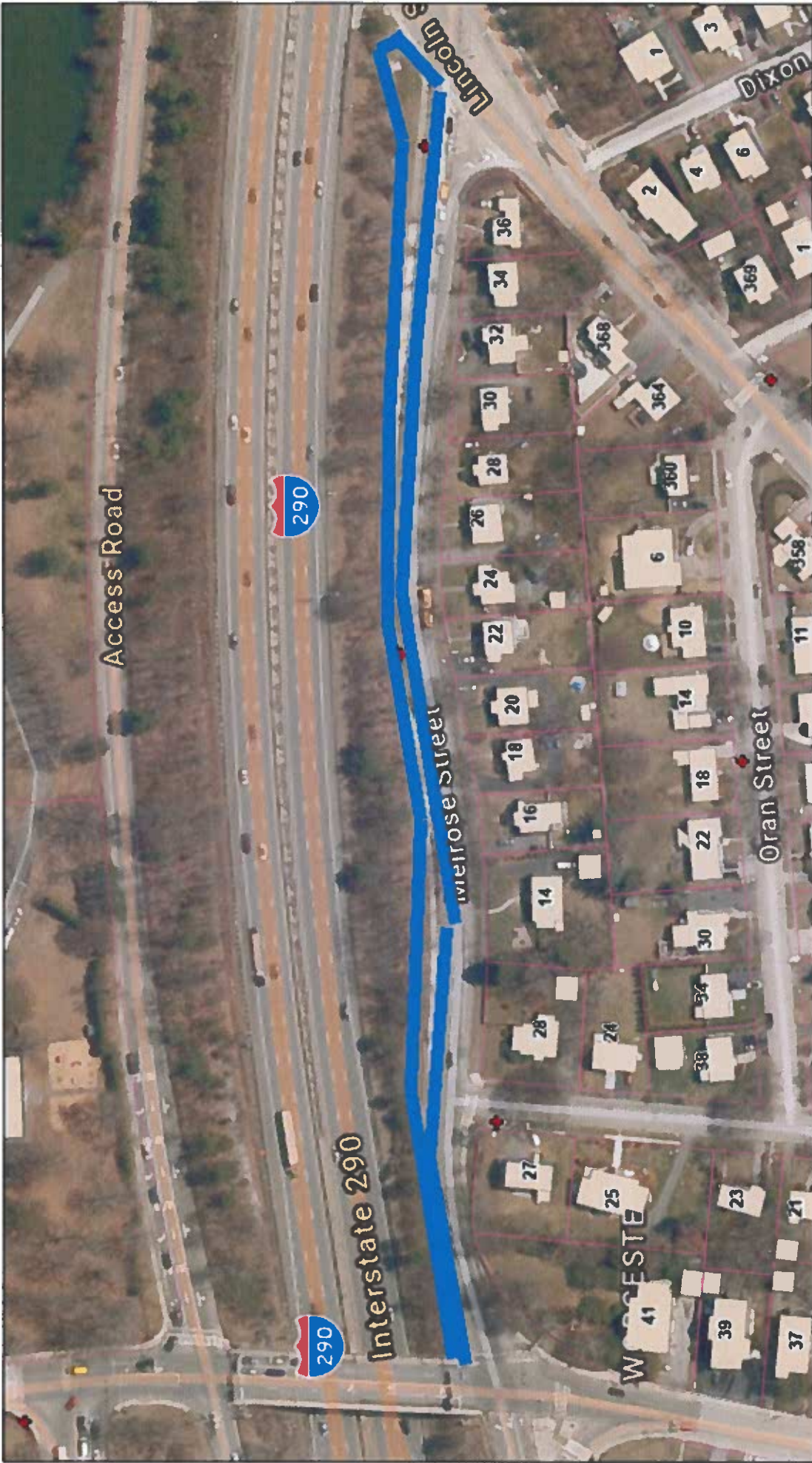
6/10/2026 1:07 PM



- █ Override 1
- Tax Parcels
- Buildings

DATA SOURCE:
 City of Worcester: Geographic Information System
 Original Data - Digitized at 1:480 scale (Data true resolution: 1 meter = 49 feet)
 Updated Using Spring 2000 Aerial Photography at 1:200 scale (1 inch = 100 feet)
 Further Updates Using City of Worcester Information

Considerable effort has been made to ensure the accuracy, correctness and timeliness of data presented. However, this information is only as accurate as its sources and may not reflect the most current information. The City of Worcester MA assumes no liability for any errors, omissions or inaccuracies and makes no warranty, representation or guaranty of any kind, express or implied, as to the content or for any decisions.







Melrose Square

6/9/2026 6:57 PM



Override 1 Hydrants

-  Override 1 Hydrants
-  City Owned Hydrant, in Service
-  Tax Parcels
-  Buildings

DATA SOURCE
 City of Worcester Geographic Information System
 Original Data - Digitized at 1:480 scale (Data from re-aerials); 1 inch = 40 feet
 Updated Using Spring 2000 Aerial Photography at 1:200 scale (1 inch = 100 feet)
 Further Updates Use City of Worcester Information

Considerable effort has been made to ensure the accuracy, timeliness and freshness of data presented however, this information is only as accurate as its sources and may not reflect the most current information. The City of Worcester, MA assumes no liability for any errors, omissions or inaccuracies and makes no warranty, representation or guaranty of any kind, express or implied, as to the content or for any decisions made or actions taken or not taken by the user based upon any information provided on this map.

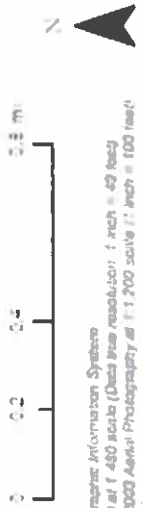


Mill St

Override 1



6/9/2026 6:54 PM



DATA SOURCE:
 City of Worcester Geographic Information System
 Original Data : Digitized at 1:480 scale (Data file resolution: 1 inch = 40 feet)
 Updated Using: StreetView 2009 Aerial Photography at 1:200 scale (1 inch = 100 feet)
 Further Updates Using City of Worcester Information

Considerable effort has been made to ensure the accuracy, correctness and timeliness of data presented. However, this information is only as accurate as its sources and may not reflect the most current information. The City of Worcester, MA assumes no liability for any errors, omissions or inaccuracies and makes no warranty, representation or guarantee of any kind, express or implied, as to the content or for any decisions made or actions taken or not taken by the user based upon any information presented on this map.

MLK Jr. Blvd



DATA SOURCES
 Basemap data - City of Worcester, MA Geographic Information System
 Original Data - Digitized at 1:480 scale (Data true resolution: 1 inch = 40 feet)
 Updated Using Spring 2003 Photography at 1 inch = 100 feet
 Further Updates Using City of Worcester Information
 Property Details - City of Worcester, MA Assessing Division

- Hydrants
- ▭ Parcels
- ▭ City

COORDINATE SYSTEM:
 All map data is in the Massachusetts State Plane Coordinate system,
 North American Datum of 1983, Massachusetts Meridian Zone (4151)
 Units are measured in Feet

DISCLAIMER
 Considerable effort has been made to ensure the accuracy, correctness and timeliness of data presented; however, this information is only as accurate as its sources and may not reflect the most current information. This map is a graphical representation of information for tax administration purposes only and does not represent a professional survey. The City of Worcester assumes no liability for any errors, omissions or inaccuracies and makes no warranty, representation or guaranty of any kind as to the content or for any decisions made or actions taken or not taken by the user based upon any information provided on this map.



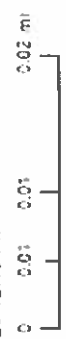
11

East Central Street



MLK Blvd #2

6/10/2026 12:13 PM



Override 1
Hydrants

City Owned Hydrant, in Service

Tax Parcels
Buildings

DATA SOURCE: City of Worcester Geographic Information System
Original Data - Digital scale 1:480 scale (Data true resolution: 1 foot = 40 feet)
Updated Using Spring 2023 Aerial Photography at 1:200 scale (1 inch = 100 feet)
Further Updates Using City of Worcester Information

Considerable effort has been made to ensure the accuracy, correctness and timeliness of data presented. However, this information is only as accurate as its sources and may not reflect the most current information. The City of Worcester, MA assumes no liability for any errors, omissions or inaccuracies and makes no warranty, representation or guaranty of any kind, express or implied, as to the content or for any decisions.

North Lake Ave



DATA SOURCES
Base/mast data: City of Worcester, MA Geographic Information System
Original Data - Digitized at 1:480 scale (Data true resolution 1 inch = 40 feet)
Updated Using Spring 2003 Photography at 1 inch = 100 feet
Further Updates Using City of Worcester Information
Property Details: City of Worcester, MA Assessing Division

- Hydrants
- Parcels
- City

COORDINATE SYSTEM
All map data is in the Massachusetts State Plane Coordinate system:
North American Datum of 1983, Massachusetts Mainland Zone (4151)
Units are measured in Feet, Vertical Datum NAVD88

DISCLAIMER
Considerable effort has been made to ensure the accuracy, correctness and timeliness of data presented; however, this information is only as accurate as its sources and may not reflect the most current information. This map is a graphical representation of information for tax administration purposes only and does not represent a professional survey. The City of Worcester assumes no liability for any errors, omissions or inaccuracies and makes no warranty, representation or guaranty of any kind as to the content or for any decisions made or actions taken or not taken by the user based upon any information provided on this map.



Pickett Plaza (Rockland Trust)

Override 1

Hydrants

- ◆ Private Hydrant
- Tax Parcels
- Buildings

6/9/2026 7:02 PM



DATA SOURCE
 City of Worcester Geographic Information System
 Original Data - Digitized at 1:480 scale (Data Area Resolution: 1 inch = 40' feat).
 Updated Using Spring 2008 Aerial Photography at 1:1,200 scale (1 inch = 100' feat).
 Further Updates Using City of Worcester Information.

Considerable effort has been made to ensure the accuracy, correctness and timeliness of data presented. However, this information is only as accurate as its sources and may not reflect the most current information. The City of Worcester, MA assumes no liability for any errors, omissions or inaccuracies and makes no warranty, representation or guarantee of any kind, express or implied, as to the content or for any decisions made or actions taken or not taken by the user based upon any information provided on this map.

Plantation Street #1



DATA SOURCES
Basemap data: City of Worcester, MA Geographic Information System
Original Data: Digitized at 1:480 scale (Data true resolution: 1 inch = 40 feet)
Updated Using Spring 2003 Photography at 1 inch = 100 feet
Further Updates Using City of Worcester Information
Property Details: City of Worcester, MA Assessing Division

- Hydrants
- ▭ Parcels
- ▭ City

COORDINATE SYSTEM
All map data is in the Massachusetts State Plane Coordinate system, North American Datum of 1983, Massachusetts Meridian Zone (4151).
Units are measured in Feet.

DISCLAIMER
Considerable effort has been made to ensure the accuracy, correctness and timeliness of data presented; however, this information is only as accurate as its sources and may not reflect the most current information. This map is a graphical representation of information for tax administration purposes only and does not represent a professional survey. The City of Worcester assumes no liability for any errors, omissions or inaccuracies and makes no warranty, representation or guaranty of any kind as to the content of any decisions made or actions taken or not taken by the user based upon any information provided on this map.



Plantation Street #2



DATA SOURCES

Basemap data: City of Worcester, MA Geographic Information System
Original Data - Digitized at 1:480 scale (Data true resolution: 1 inch = 40 feet)
Updated Using Spring 2003 Photography at 1 inch = 100 feet
Further Updates Using City of Worcester Information
Property Details: City of Worcester, MA Assessing Division

- Hydrants
- ▭ Parcels
- ▭ City

COORDINATE SYSTEM:

All map data is in the Massachusetts State Plane Coordinate system,
North American Datum of 1983, Massachusetts Meridian Zone (4151)
Units are measured in Feet.

DISCLAIMER

Considerable effort has been made to ensure the accuracy, correctness and timeliness of data presented; however, the information is only as accurate as its sources and may not reflect the most current information. This map is a graphical representation of information for tax administration purposes only and does not represent a professional survey. The City of Worcester assumes no liability for any errors, omissions or inaccuracies and makes no warranty, representation or guaranty of any kind as to the content or for any decisions made or actions taken or not taken by the user based upon any information provided on this map.



Plantation Street #3



DATA SOURCES

Basemap data: City of Worcester, MA Geographic Information System
 Original Data - Digitized at 1:480 scale (Data true resolution: 1 inch = 40 feet)
 Updated Using Spring 2003 Photography at 1 inch = 100 feet
 Further Updates Using City of Worcester Information
 Property Details: City of Worcester, MA Assessing Division

- Hydrants
- ▭ Parcels
- ▣ City

COORDINATE SYSTEM:

All map data is in the Massachusetts State Plane Coordinate system,
 North American Datum of 1983, Massachusetts Mainland Zone (4151)
 Units are measured in Feet

DISCLAIMER

Considerable effort has been made to ensure the accuracy, correctness and timeliness of data presented; however, this information is only as accurate as its sources and may not reflect the most current information. This map is a graphical representation of information for tax administration purposes only and does not represent a professional survey. The City of Worcester assumes no liability for any errors, omissions or inaccuracies and makes no warranty, representation or guaranty of any kind as to the content or for any decisions made or actions taken or not taken by the user based upon any information provided on this map.



Quinsigamond War Memorial

6/8/2026 3:59 PM



Override 1 Hydrants

- City Owned Hydrant, in Service
- Private Hydrant
- Tax Parcels
- Buildings

DATA SOURCE: City of Worcester Geographic Information System
 Original Data: Digitized at 1:480 scale (Data from resolution 1 inch = 40 feet)
 Updated Using Spring 2000 Aerial Photography at 1:1,200 scale (1 inch = 100 feet)
 Further Updates Using City of Worcester Information.

Considerable effort has been made to ensure the accuracy, correctness and timeliness of data presented; however, this information is only as accurate as its source and may not reflect the most current information. The City of Worcester MA assumes no liability for any errors, omissions or inaccuracies and makes no warranty, representation or guarantee of any kind, express or implied, as to the content or for any decisions made or actions taken or not taken by the user based upon any information provided on this map.



Shore Drive

6/9/2025 7:09 PM



Override 1

Hydrants

City Owned Hydrant, in Service

Tax Parcels
Buildings

DATA SOURCE

City of Worcester Geographic Information Systems
Original Data - Digitized at 1:450 scale (Data true resolution: 1 inch = 40 feet)
Updated Using Spring 2020 Aerial Photography at 1:700 scale (1 inch = 100 feet)
Further Updated Using City of Worcester Information

Considerable effort has been made to ensure the accuracy, correctness and timeliness of data presented however, this information is only as accurate as its sources and may not reflect the most current information. The City of Worcester, MA assumes no liability for any errors, omissions or inaccuracies and makes no warranty, representation or guarantee of any kind, express or implied, as to the content or for any decisions made or actions taken or not taken by the user based upon any information provided on this map.



Shrewsbury Street

Override 1

6/9/2026 7:12 PM



DATA SOURCE:
 City of Worcester Geographic Information Systems
 Original Data - Digitized at 1:500 scale (Data File resolution: 1 inch = 40 feet)
 Updated Using StreetView 2000 Aerial Photography at 1:200 scale (1 inch = 100 feet)
 Further Updates Using City of Worcester Information.

Considerable effort has been made to ensure the accuracy, correctness and timeliness of data presented; however, this information is only as accurate as its source and may not reflect the most current information. The City of Worcester, MA, assumes no liability for any errors, omissions or inaccuracies and makes no warranty, representation or guarantee of any kind, express or implied, as to the accuracy or for any decisions made or actions based or not taken by the user based upon any information provided on this map.

South Flagg Street #1



DATA SOURCES:

Basemap data: City of Worcester, MA Geographic Information System
Original Data - Digitized at 1:480 scale (Data true resolution: 1 inch = 40 feet)
Updated Using Spring 2003 Photography at 1 inch = 100 feet
Further Updates Using City of Worcester Information
Property Details: City of Worcester, MA Assessing Division

- Hydrants
- ▭ Parcels
- ▭ City

COORDINATE SYSTEM:

All map data is in the Massachusetts State Plane Coordinate system,
North American Datum of 1983, Massachusetts Mainland Zone (4151).
Units are measured in Feet.

DISCLAIMER:

Considerable effort has been made to ensure the accuracy, correctness and timeliness of data presented. However, this information is only as accurate as its sources and may not reflect the most current information. This map is a graphical representation of information for tax administration purposes only and does not represent a professional survey. The City of Worcester assumes no liability for any errors, omissions or inaccuracies and makes no warranty, representation or guaranty of any kind as to the content or for any decisions made or actions taken or not taken by the user based upon any information provided on this map.





Southbridge St

6/9/2026 7:14 PM



Override 1
Hydrants

- ◆ City Owned Hydrant, in Service
- Tax Parcels
- Buildings

DATA SOURCE:
City of Worcester Geographic Information Systems
Original Data - Digitized at 1:480 scale (Data File Resolution: 1 inch = 40 feet)
Landscape (Using Spring 2000 Aerial Photography at 1:200 scale (1 inch = 100 feet))
Further Updates Using City of Worcester Information

Considerable effort has been made to ensure the accuracy, correctness and timeliness of data presented. However, this information is only as accurate as its sources and may not reflect the most current information. The City of Worcester MA assumes no liability for any errors, omissions or inaccuracies and makes no warranty, representation or guarantee of any kind, express or implied, as to the content or for any decisions made or actions taken or not taken by the user based upon any information provided on this map.

Sunrise Avenue



DATA SOURCES

Basemap data: City of Worcester, MA Geographic Information System
Original Data - Digitized at 1:480 scale (Data true resolution: 1 inch = 40 feet)
Updated Using Spring 2003 Photography at 1 inch = 100 feet
Further Updates Using City of Worcester Information
Property Details: City of Worcester, MA Assessing Division

- Hydrants
- Parcels
- City

COORDINATE SYSTEM

All map data is in the Massachusetts State Plane Coordinate system,
North American Datum of 1983, Massachusetts Mainland Zone (4151).
Units are measured in Feet.

DISCLAIMER

Considerable effort has been made to ensure the accuracy, correctness, and timeliness of data presented; however, this information is only as accurate as its sources and may not reflect the most current information. This map is a graphical representation of information for tax administration purposes only and does not represent a professional survey. The City of Worcester assumes no liability for any errors, omissions, or inaccuracies and makes no warranty, representation or guaranty of any kind as to the content or for any decisions made or actions taken or not taken by the user based upon any information provided on this map.



Tainter Bike Path

Override 1

Hydrants

City Owned Hydrant, In Service



Tax Parcels



Buildings



6/10/2026 1:29 PM



DATA SOURCE:
 City of Worcester: Geographic Information System
 Original Data - Digitized at 1:480 scale (Data true resolution: 1 inch = 40' feet)
 Updated Using Spring 2003 Aerial Photography at 1:200 scale (1 inch = 100 feet)
 Further Updates Using City of Worcester Information

Considerable effort has been made to ensure the accuracy, completeness and timeliness of data presented. However, this information is only as accurate as its sources and may not reflect the most current information. The City of Worcester, MA assumes no liability for any errors, omissions or inaccuracies and makes no warranty, representation or guarantee of any kind, express or implied, as to the content or for any decisions



Triangle Square

6/9/2026 7:33 PM



Override 1 Hydrants

-  City Owned Hydrant, In Service
-  Tax Parcels
-  Buildings

DATA SOURCE
 City of Worcester Geographic Information System
 Original Data - Digitized at 1:480 scale (Data base resolution: 1 inch = 48 feet)
 Aerial Imagery - Spring 2003 Aerial Photography at 1:200 scale (1 inch = 100 feet)
 Further Updates Using City of Worcester Information

Considerable effort has been made to ensure the accuracy, correctness and timeliness of data presented; however, this information is only as accurate as its sources and may not reflect the most current information. The City of Worcester, MA assumes no liability for any errors, omissions or inaccuracies and makes no warranty, representation or guarantee of any kind, express or implied, as to the content or for any decisions made or actions taken or not taken by the user based upon any information provided on this map.



Vincent Circle

- Override 1
- Tax Parcels
- Buildings



6/10/2026 1:43 PM

DATA SOURCE:
 City of Worcester Geographic Information System
 Original Data - Digitized at 1:480 scale (Data true resolution: 1 inch = 40 feet)
 Updated Using Spring 2025 Aerial Photography at 1:200 scale (1 inch = 100 feet)
 Further Updates Using City of Worcester Information

Considerable effort has been made to ensure the accuracy, completeness and timeliness of data presented. However, this information is only as accurate as its sources and may not reflect the most current information. The City of Worcester, MA assumes no liability for any errors, omissions or inaccuracies and makes no warranty, representation or guaranty of any kind, express or implied, as to the content or for any decisions.



West Mountain Street

6/9/2026 7:31 PM



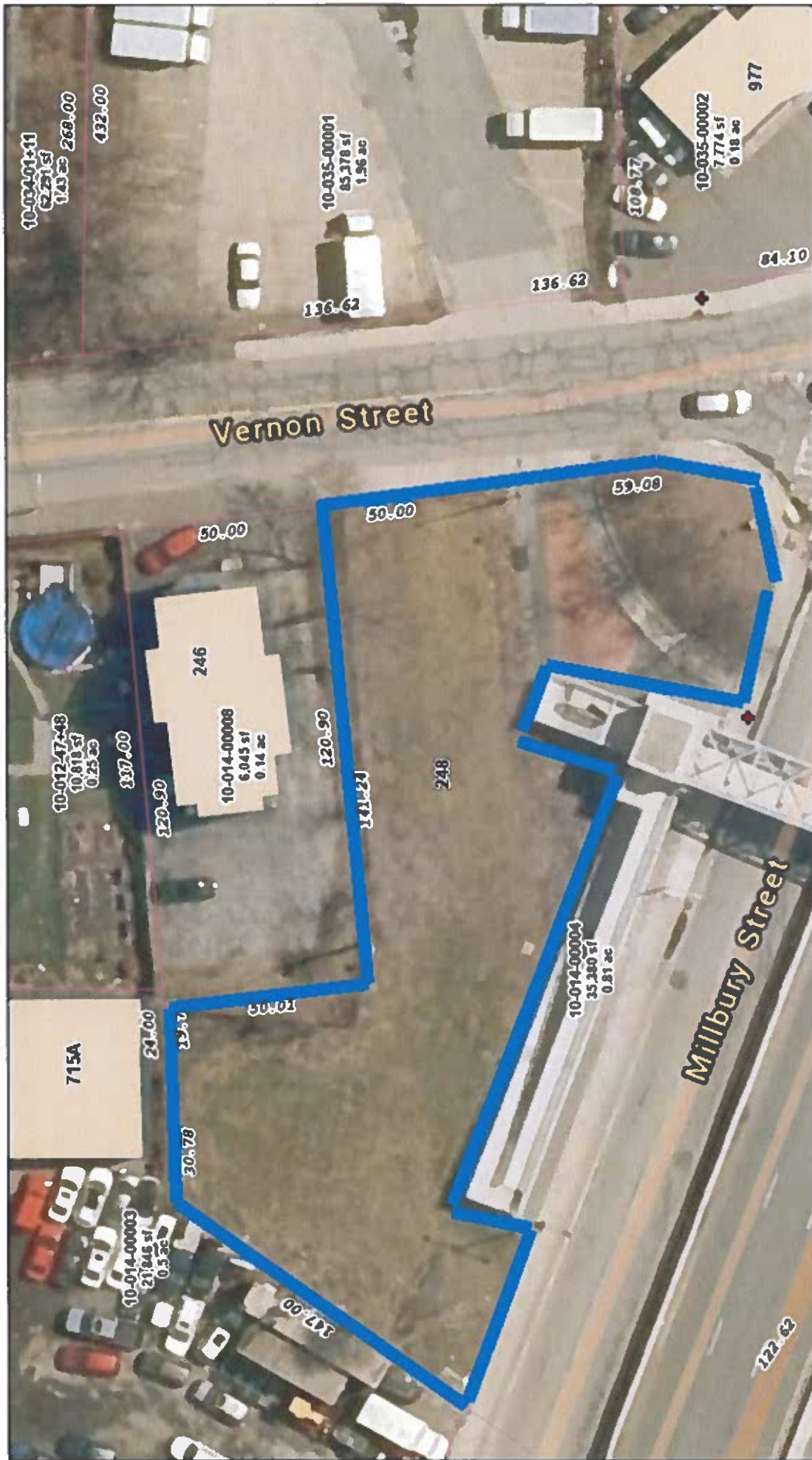
Override 1

Hydrants

-  City Owned Hydrant, In Service
-  Tax Parcels
-  Buildings




DATA SOURCE:
 City of Worcester Geographic Information System
 Current Data - Digitized at 1:480 scale (Data from resolution: 1 inch = 40 feet)
 Updated Using Spring 2020 Aerial Photography at 1:200 scale (1 inch = 100 feet)
 Further Updates Using City of Worcester Information

Considerable effort has been made to ensure the accuracy, completeness and timeliness of data presented however this information is only as accurate as its sources and may not reflect the most current information. The City of Worcester, MA assumes no liability for any errors, omissions or inaccuracies and makes no warranty, representation or guarantee of any kind, express or implied, as to the content or for any decisions made or actions taken or not taken by the user based upon any information provided on this map.



146 Catwalk - Hurley Sq

Override 1
Hydrants

-  City Owned Hydrant, in Service
-  Tax Parcels
-  Buildings



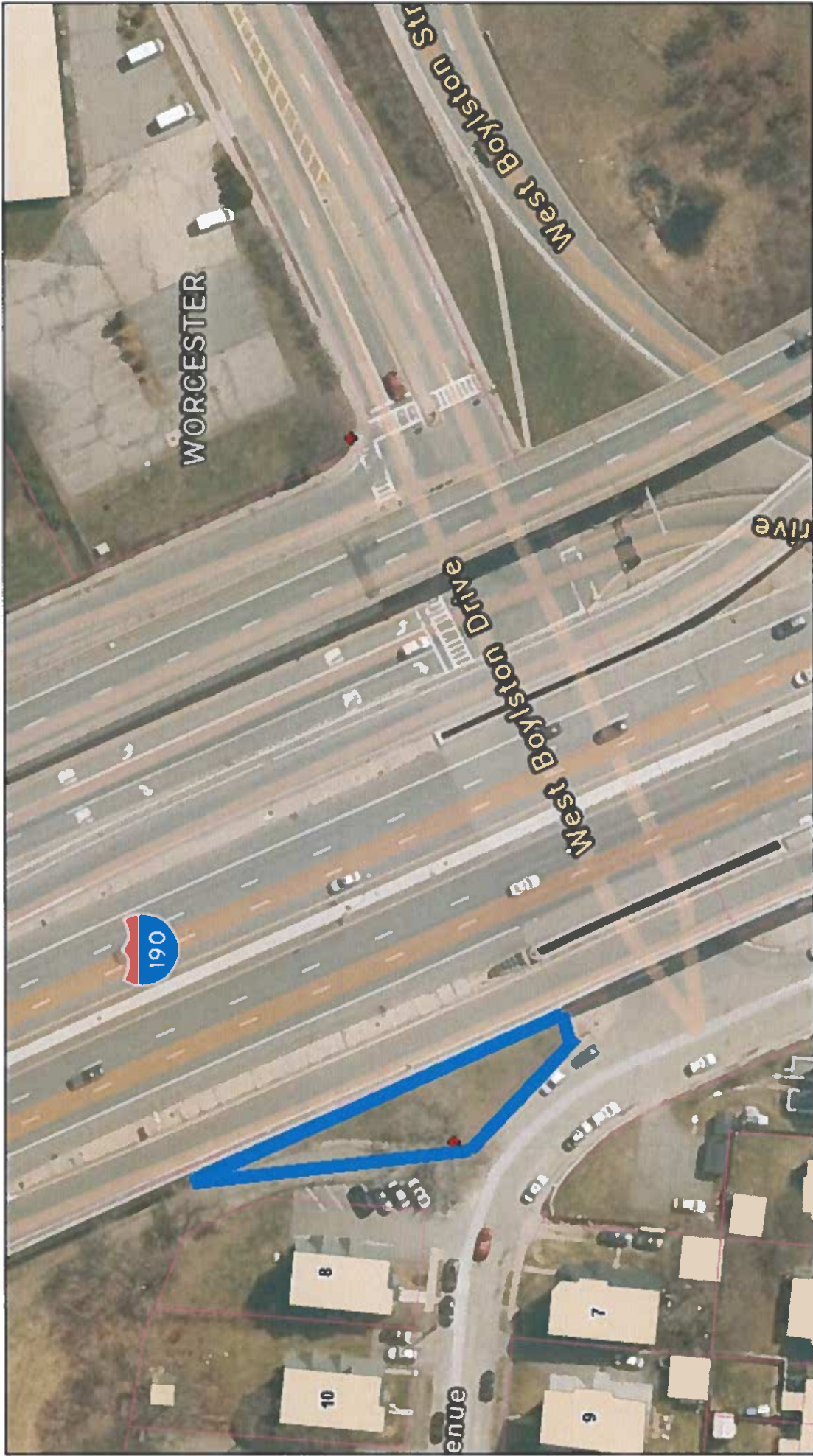
6/9/2026 7:22 PM

0 0.01 0.01 mi



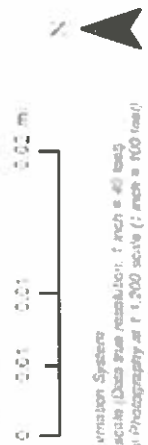
DATA SOURCE
City of Worcester Geographic Information System
Original Data - Imagery at 1:490 scale (Data from resolution: 1 inch = 40 feet)
Updated Using Spring 2023 Aerial Photography at 1:700 scale (1 inch = 100 feet)
Further Updates Using City of Worcester Information

Constructive effort has been made to ensure the accuracy, correctness and timeliness of data presented; however, this information is only as accurate as the sources and may not reflect the most current information. The City of Worcester, MA assumes no liability for any errors, omissions or inaccuracies and makes no warranty, representation or guarantee of any kind, express or implied, as to the content or for any decisions made or actions taken or not taken by the user based upon any information provided on this map.



149 W Boylston Drive

6/9/2026 7:23 PM



Override 1 Hydrants

- Override 1
- ◆ City Owned Hydrant, in Service
- Tax Parcels
- Buildings

DATA SOURCE
 City of Worcester Geographic Information Systems
 Copyright (Map): Department of 480 scale (Data File resolution: 1 inch = 40 feet)
 Specialist (Using Spring 2003 Aerial Photography at 1:200 scale (1 inch = 100 feet))
 Further Updates Using City of Worcester Information

Considerable effort has been made to ensure the accuracy, timeliness and completeness of data presented hereon. This information is only as accurate as its sources and may not reflect the most current information. The City of Worcester, MA assumes no liability for any errors, omissions or inaccuracies and makes no warranty, representation or guarantee of any kind, express or implied, as to the content or for any decisions made or actions based or not taken by the user based upon any information provided on this map.