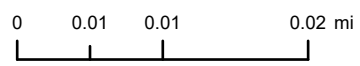




CityViewer Map

4/7/2026 11:44 AM



DATA SOURCES:
 Airport Clear Zones: MassPort | Census Tracts: U.S. Census Bureau | Environmental Justice Populations, FEMA Flood Hazards, Historic Areas/Properties, Wetlands, and Wildlife Habitat: MassGIS | Historic Redlining Zones: Digital map developed by Worcester Regional Research Bureau from the University of Richmond's photo | WRTA Bus Stops/Routes: Central Massachusetts Regional Planning Commission | All other data: City of Worcester GIS.

Considerable effort has been made to ensure the accuracy, correctness and timeliness of data presented; however, this information is only as accurate as its sources and may not reflect the most current information. The City of Worcester, MA assumes no liability for any errors, omissions or inaccuracies and makes no warranty, representation or guaranty of any kind, express or implied, as to the content or for any decisions made or actions taken or not taken by the user based upon any information provided on this map.

— Override 1

Hydrants

City Owned Hydrant, In Service

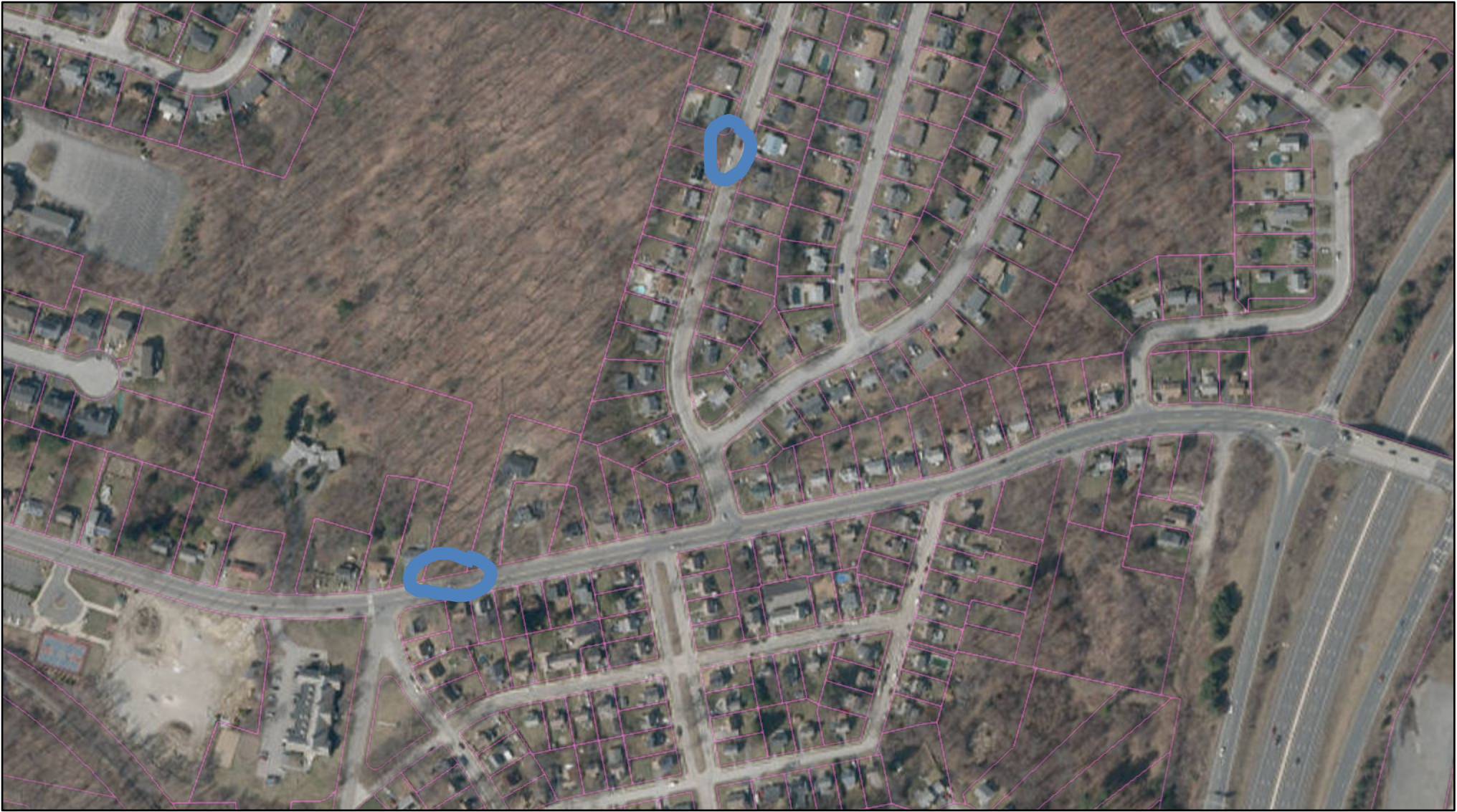
Tax Parcels

Buildings

TYPE

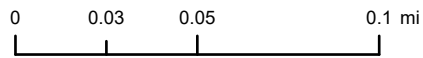
Building

Deck/Patio



Ararat Street

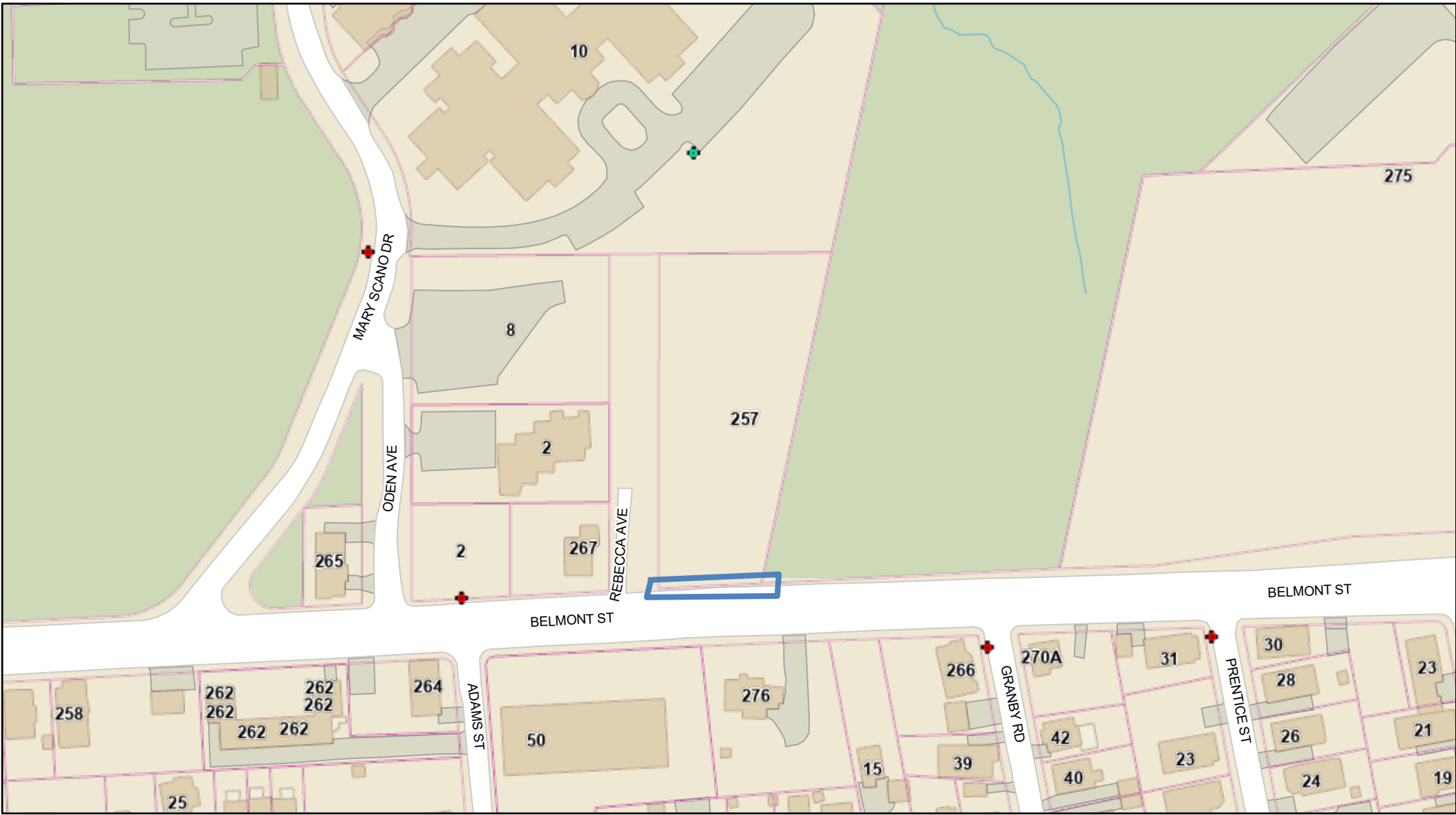
8/7/2024 5:40 PM



- Override 1
- Tax Parcels

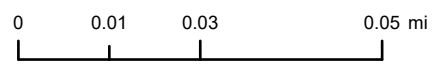
DATA SOURCES:
 Airport Clear Zones: MassPort | Census Tracts: U.S. Census Bureau | Environmental Justice Populations, FEMA Flood Hazards, Historic Areas/Properties, Wetlands, and Wildlife Habitat: MassGIS | Historic Redlining Zones: Digital map developed by Worcester Regional Research Bureau from the University of Richmond's photo | WRTA Bus Stops/Routes: Central Massachusetts Regional Planning Commission | All other data: City of Worcester GIS.

Considerable effort has been made to ensure the accuracy, correctness and timeliness of data presented; however, this information is only as accurate as its sources and may not reflect the most current information. The City of Worcester, MA assumes no liability for any errors, omissions or inaccuracies and makes no warranty, representation or guaranty of any kind, express or implied, as to the content or for any decisions made or actions taken or not taken by the user based upon any information provided on this map.



CityViewer Map

4/1/2026 9:04 AM



Override 1

Hydrants

- City Owned Hydrant, In Service
- Private Hydrant

Tax Parcels

Buildings

TYPE

- Building
- Deck/Patio

DATA SOURCES:
 Airport Clear Zones: MassPort | Census Tracts: U.S. Census Bureau | Environmental Justice Populations, FEMA Flood Hazards, Historic Areas/Properties, Wetlands, and Wildlife Habitat: MassGIS | Historic Redlining Zones: Digital map developed by Worcester Regional Research Bureau from the University of Richmond's photo | WRTA Bus Stops/Routes: Central Massachusetts Regional Planning Commission | All other data: City of Worcester GIS.

Considerable effort has been made to ensure the accuracy, correctness and timeliness of data presented; however, this information is only as accurate as its sources and may not reflect the most current information. The City of Worcester, MA assumes no liability for any errors, omissions or inaccuracies and makes no warranty, representation or guaranty of any kind, express or implied, as to the content or for any decisions made or actions taken or not taken by the user based upon any information provided on this map.

Country Club BLVD & White Ave



DATA SOURCES
 Basemap data: City of Worcester, MA Geographic Information System
 Original Data - Digitized at 1:450 scale (Data true resolution: 1 inch = 40 feet)
 Updated Using Spring 2003 Photography at 1 inch = 100 feet
 Further Updates Using City of Worcester Information
 Property Details: City of Worcester, MA Assessing Division

COORDINATE SYSTEM
 All map data is in the Massachusetts State Plane Coordinate system,
 North American Datum of 1983, Massachusetts Mainland Zone (4151)
 Units are measured in Feet

DISCLAIMER
 Considerable effort has been made to ensure the accuracy, correctness
 and timeliness of data presented, however, this information is only as
 accurate as its sources and may not reflect the most current information.
 This map is a graphical representation of information for tax administration
 purposes only and does not represent a professional survey. The City of
 Worcester assumes no liability for any errors, omissions or inaccuracies
 and makes no warranty, representation or guaranty of any kind as to the
 content or for any decisions made or actions taken or not taken by the
 user based upon any information provided on this map.

Darnell Road



DATA SOURCES
Basemap data: City of Worcester, MA Geographic Information System
Original Data - Digitized at 1:480 scale (Data true resolution: 1 inch = 40 feet)
Updated Using Spring 2003 Photography at 1 inch = 100 feet
Further Updates Using City of Worcester Information
Property Details: City of Worcester, MA Assessing Division

- Hydrants
- Parcels
- City

COORDINATE SYSTEM:
All map data is in the Massachusetts State Plane Coordinate system,
North American Datum of 1983, Massachusetts Meridian Zone (415).
Units are measured in Feet.

DISCLAIMER
Considerable effort has been made to ensure the accuracy, correctness and timeliness of data presented, however, this information is only as accurate as its sources and may not reflect the most current information. This map is a graphical representation of information for tax administration purposes only and does not represent a professional survey. The City of Worcester assumes no liability for any errors, omissions or inaccuracies and makes no warranty, representation or guaranty of any kind as to the content or for any decisions made or actions taken or not taken by the user based upon any information provided on this map.

Grove Street



DATA SOURCES
Basemap data: City of Worcester, MA Geographic Information System
Original Data: Digitized at 1:480 scale (Data true resolution: 1 inch = 40 feet)
Updated Using Spring 2003 Photography at 1 inch = 100 feet
Further Updates Using City of Worcester Information
Property Details: City of Worcester, MA Assessing Division

- Hydrants
- Parcels
- ▣ City

COORDINATE SYSTEM
All map data is in the Massachusetts State Plane Coordinate system,
North American Datum of 1983, Massachusetts Mainland Zone (4151)
Units are measured in Feet.

DISCLAIMER
Considerable effort has been made to ensure the accuracy, correctness and timeliness of data presented; however, this information is only as accurate as its sources and may not reflect the most current information. This map is a graphical representation of information for tax administration purposes only and does not represent a professional survey. The City of Worcester assumes no liability for any errors, omissions or inaccuracies and makes no warranty, representation or guaranty of any kind as to the content or for any decisions made or actions taken or not taken by the user based upon any information provided on this map.

Mill Street @ 446 & 520 #1



DATA SOURCES:
Base map data: City of Worcester, MA Geographic Information System
Original Data - Digitized at 1:480 scale (Data true resolution: 1 inch = 40 feet)
Updated Using Spring 2003 Photography at 1 inch = 100 feet
Further Updates Using City of Worcester Information
Property Details: City of Worcester, MA Assessing Division

COORDINATE SYSTEM:
All map data is in the Massachusetts State Plane Coordinate system,
North American Datum of 1983, Massachusetts Mainland Zone (49 1)
Units are measured in Feet

DISCLAIMER:
Considerable effort has been made to ensure the accuracy, completeness and timeliness of data presented; however, this information is only as accurate as its sources and may not reflect the most current information. This map is a graphical representation of information for tax administration purposes only and does not represent a professional survey. The City of Worcester assumes no liability for any errors, omissions or inaccuracies and makes no warranty, representation or guaranty of any kind as to the content or for any decisions made or actions taken or not taken by the user based upon any information provided on this map.

Mill Street 446 & 520 #2



DATA SOURCES:
Basemap data: City of Worcester, MA Geographic Information System
Original Data: Digitized at 1:400 scale (Data true resolution: 1 inch = 40 feet)
Updated Using Spring 2003 Photography at 1 inch = 100 feet
Further Updates Using City of Worcester Information
Property Details: City of Worcester, MA Assessing Division

- Hydrants
- Parcels
- City

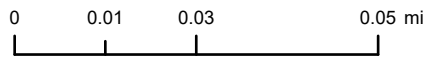
COORDINATE SYSTEM:
All map data is in the Massachusetts State Plane Coordinate system,
North American Datum of 1983, Massachusetts Mainland Zone (415)
Units are measured in Feet

DISCLAIMER
Considerable effort has been made to ensure the accuracy, correctness and timeliness of data presented, however, this information is only as accurate as its sources and may not reflect the most current information. This map is a graphical representation of information for tax administration purposes only and does not represent a professional survey. The City of Worcester assumes no liability for any errors, omissions or inaccuracies and makes no warranty, representation or guaranty of any kind as to the content or for any decisions made or actions taken or not taken by the user based upon any information provided on this map.



CityViewer Map


4/1/2026 9:23 AM



 Override 1

 Worcester Conservation Commission

Hydrants

 City Owned Hydrant, In Service

 Tax Parcels

Buildings

TYPE

 Building

DATA SOURCES:
 Airport Clear Zones: MassPort | Census Tracts: U.S. Census Bureau | Environmental Justice Populations, FEMA Flood Hazards, Historic Areas/Properties, Wetlands, and Wildlife Habitat: MassGIS | Historic Redlining Zones: Digital map developed by Worcester Regional Research Bureau from the University of Richmond's photo | WRTA Bus Stops/Routes: Central Massachusetts Regional Planning Commission | All other data: City of Worcester GIS.

Considerable effort has been made to ensure the accuracy, correctness and timeliness of data presented; however, this information is only as accurate as its sources and may not reflect the most current information. The City of Worcester, MA assumes no liability for any errors, omissions or inaccuracies and makes no warranty, representation or guaranty of any kind, express or implied, as to the content or for any decisions made or actions taken or not taken by the user based upon any information provided on this map.

South Flagg Street



DATA SOURCES
Basemap data: City of Worcester, MA Geographic Information System
Original Data: Digitized at 1:480 scale (Data true resolution: 1 inch = 40 feet)
Updated Using Spring 2003 Photography at 1 inch = 100 feet
Further Updates Using City of Worcester Information
Property Details: City of Worcester, MA Assessing Division

-  Hydrants
-  Parcels
-  City

COORDINATE SYSTEM
All map data is in the Massachusetts State Plane Coordinate system,
North American Datum of 1983, Massachusetts Meridian Zone (415)
Units are measured in Feet

DISCLAIMER
Considerable effort has been made to ensure the accuracy, correctness and timeliness of data presented; however, this information is only as accurate as its sources and may not reflect the most current information. This map is a graphical representation of information for tax administration purposes only and does not represent a professional survey. The City of Worcester assumes no liability for any errors, omissions or inaccuracies and makes no warranty, representation or guaranty of any kind as to the content or for any decisions made or actions taken or not taken by the user based upon any information provided on this map.

Vincent Circle



DATA SOURCES:
Base map data: City of Worcester, MA Geographic Information System
Original Data - Digitized at 1:480 scale (Data true resolution: 1 inch = 40 feet)
Updated Using Spring 2003 Photography at 1 inch = 100 feet
Further Updates Using City of Worcester Information
Property Details: City of Worcester, MA Assessing Division

COORDINATE SYSTEM:
All map data is in the Massachusetts State Plane Coordinate system
North American Datum of 1983, Massachusetts Mainland Zone (415)
Units are measured in Feet

DISCLAIMER
Considerable effort has been made to ensure the accuracy, correctness and timeliness of data presented; however, this information is only as accurate as its sources and may not reflect the most current information. This map is a graphical representation of information for tax administration purposes only and does not represent a professional survey. The City of Worcester assumes no liability for any errors, omissions or inaccuracies and makes no warranty, representation or guaranty of any kind as to the content or for any decisions made or actions taken or not taken by the user based upon any information provided on this map.

Westview Road



DATA SOURCES:
Basemap data: City of Worcester, MA Geographic Information System
Original Data - Digitized at 1:480 scale (Data true resolution: 1 inch = 40 feet)
Updated Using Spring 2003 Photography at 1 inch = 100 feet
Further Updates Using City of Worcester Information
Property Details: City of Worcester, MA Assessing Division

COORDINATE SYSTEM:
All map data is in the Massachusetts State Plane Coordinate system,
North American Datum of 1983, Massachusetts Mainland Zone (4151)
Units are measured in Feet.

DISCLAIMER
Considerable effort has been made to ensure the accuracy, correctness and timeliness of data presented; however, this information is only as accurate as its sources and may not reflect the most current information. This map is a graphical representation of information for tax administration purposes only and does not represent a professional survey. The City of Worcester assumes no liability for any errors, omissions or inaccuracies and makes no warranty, representation or guaranty of any kind as to the content or for any decisions made or actions taken or not taken by the user based upon any information provided on this map.