

# POND DREDGING

## ELM PARK POND

121 RUSSELL STREET  
WORCESTER, MA 01608

### SHEET INDEX

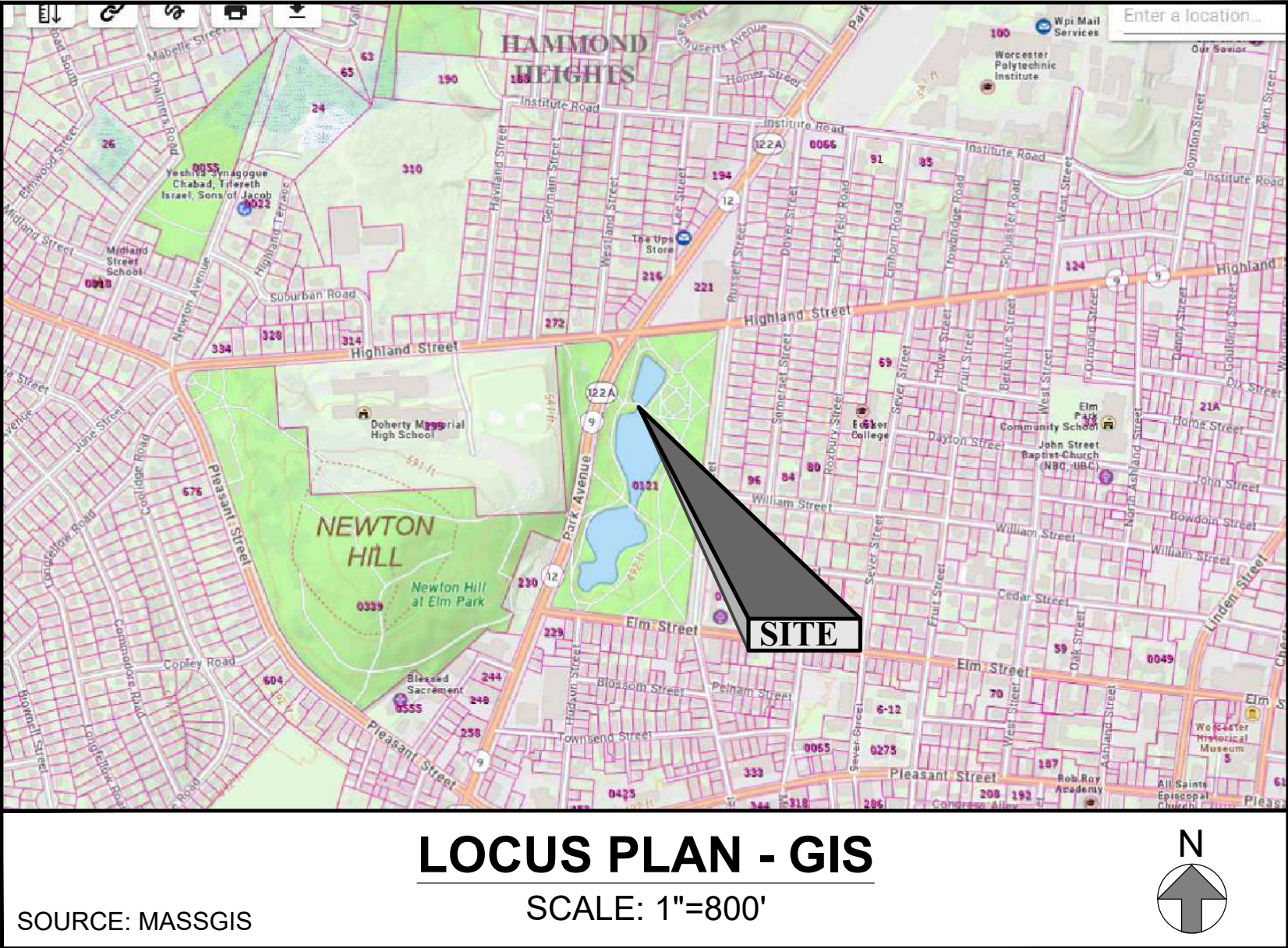
No.	Title	Issue Date
C001	Cover Sheet	August 26, 2024
C101	Existing Conditions Plan	August 26, 2024
C102	Construction Access Plan	August 26, 2024
C103	Site Plan	August 26, 2024
C501	Section and Site Details	August 26, 2024

### REVISIONS/ISSUES

No.	Note	Date
1	Issued for Bidding & Construction	August 26, 2024

### REFERENCE PLAN INDEX

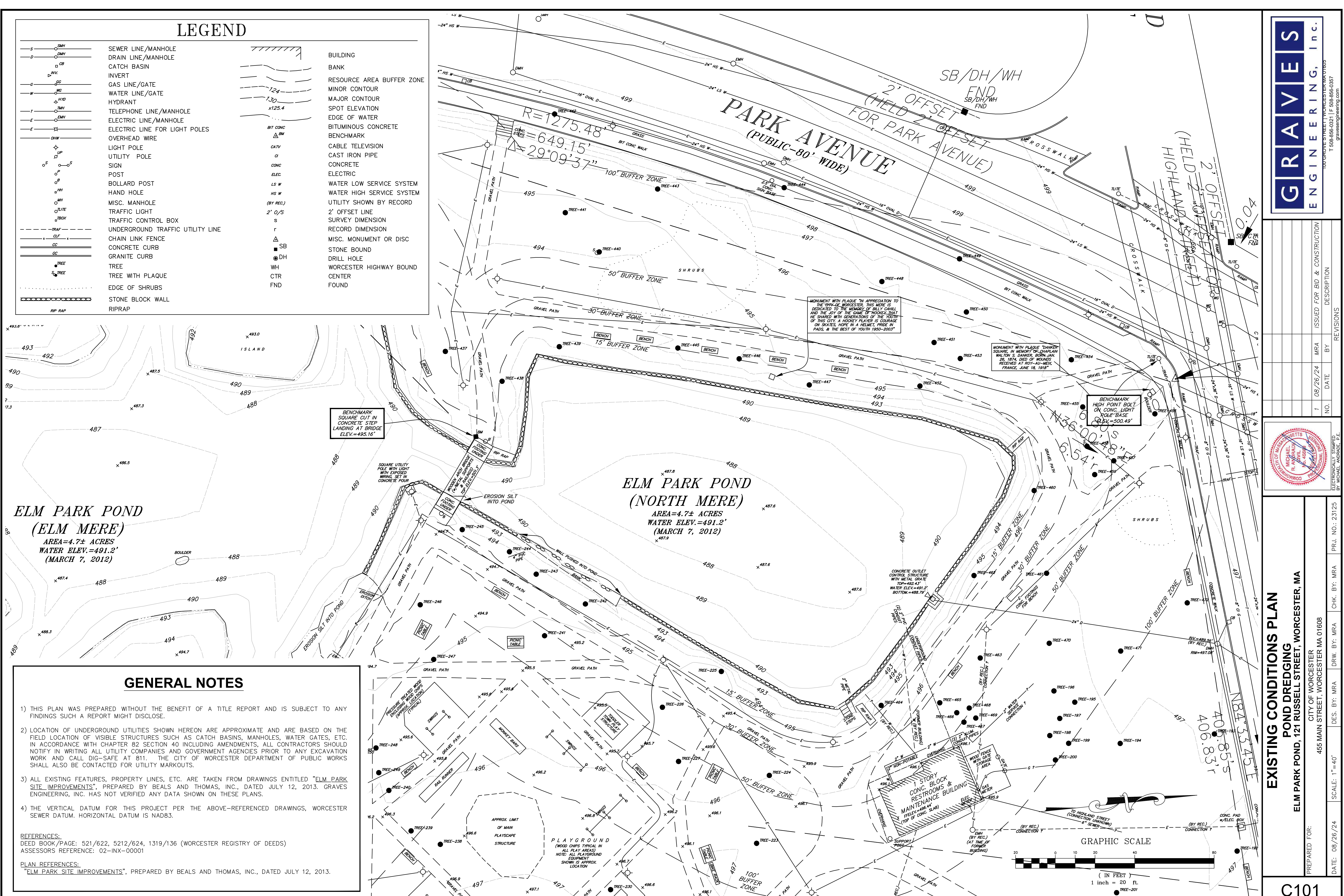
No.	Title	Issue Date
-----	-------	------------



**OWNER**  
City of Worcester Dept. of Public Works  
50 Officer Familia Way  
Worcester, MA 01605

**ENVIRONMENTAL CONSULTANT**  
EcoTec, Inc.  
102 Grove Street  
Worcester, MA 01605





GRAVES

ENGINEERING, Inc.

100 GROVE STREET WORCESTER MA 01605

T 508-856-0321 | F 508-856-0357

gravesengineering.com

ISSUED FOR BID & CONSTRUCTION		DESCRIPTION	
NO.	DATE	BY	REVISIONS
1	08/26/24	MRA	ISSUED FOR BID & CONSTRUCTION

SEAL

STATE OF MASSACHUSETTS

PLANNING BOARD

REGISTERED PROFESSIONAL ENGINEER

NO. 10100

EXPIRATION DATE 12/31/2025

MICHAEL R. ANDRABE, P.E.

100 GROVE STREET, WORCESTER, MA 01605

508-856-0321

EXISTING CONDITIONS PLAN

POND DREDGING

ELM PARK POND, 121 RUSSELL STREET, WORCESTER, MA

PREPARED FOR:

CITY OF WORCESTER

455 MAIN STREET, WORCESTER MA 01608

DATE: 08/26/24

SCALE: 1"=40'

DES. BY: MRA

CHK. BY: MRA

DRW. BY: MRA

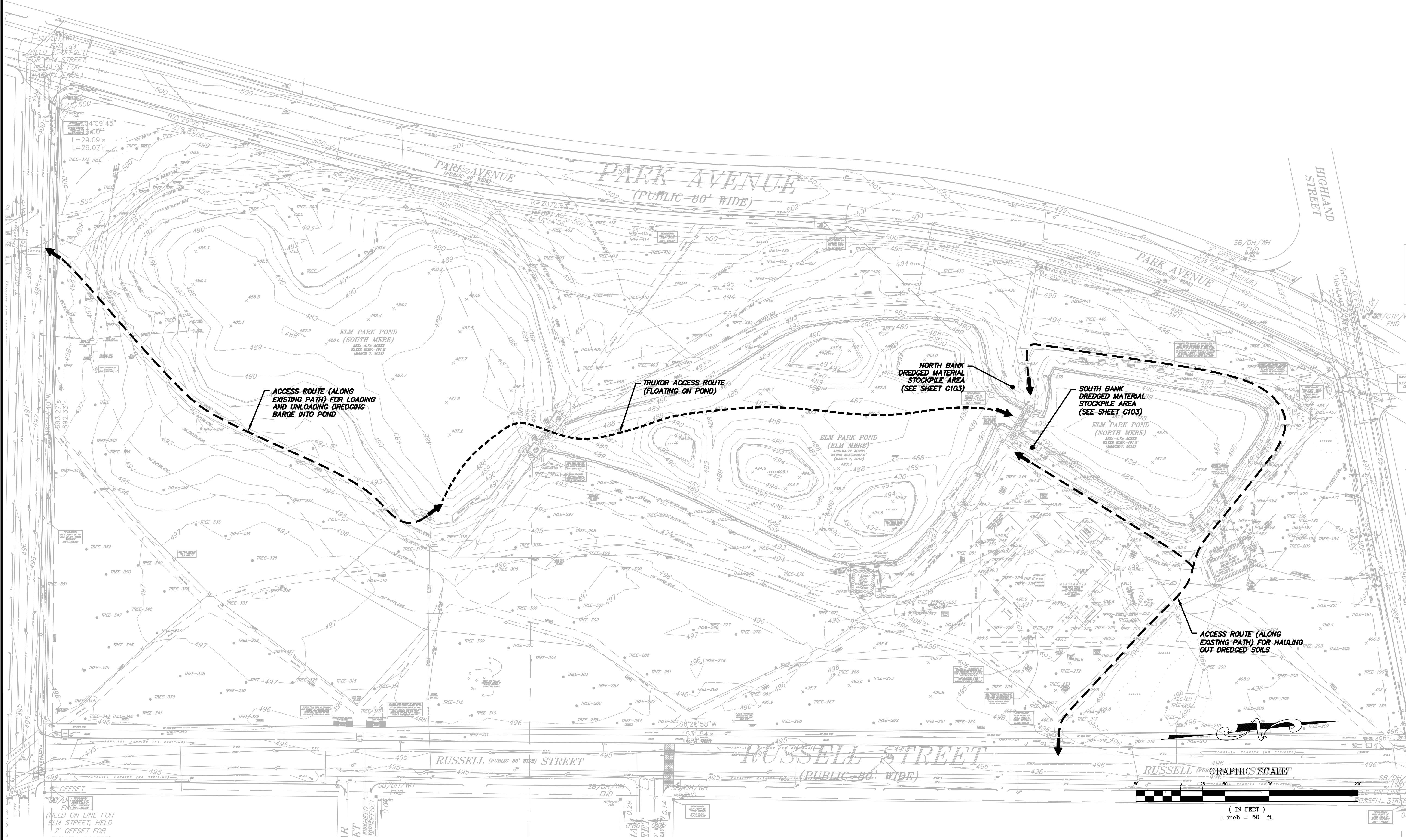
PRJ. NO.: 23125

C101



SHEET NOTES

- 1) HAUL ROUTES ARE SUBJECT TO CHANGE BASED UPON INPUT FROM THE CONTRACTOR, HOWEVER, THE INTENT IS TO UTILIZE THE EXISTING MACADAM-SURFACED PATHS.
- 2) THE CONTRACTOR SHALL INSTALL ANY TEMPORARY MEASURES AS NECESSARY TO PREVENT DAMAGE TO THE EXISTING PATHWAYS AND ABUTTING LAWN OR LANDSCAPED AREAS AND SHALL REPAIR ANY DAMAGED OR DISTURBED AREAS TO THE SATISFACTION OF THE CITY OF WORCESTER DPW.

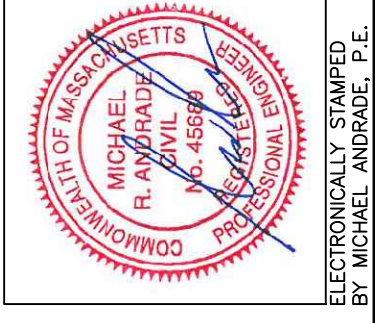


GRAVES

ENGINEERING, Inc.

100 GROVE STREET | WORCESTER, MA 01605  
T 508-856-0321 | F 508-856-0357  
gravesengineering.com

NO.	DATE	BY	DESCRIPTION
1	08/26/24	MRA	ISSUED FOR BID & CONSTRUCTION



CONSTRUCTION ACCESS PLAN

POND DREDGING

ELM PARK POND, 121 RUSSELL STREET, WORCESTER, MA

PREPARED FOR:  
CITY OF WORCESTER  
455 MAIN STREET, WORCESTER MA 01608

DATE: 08/26/24

SCALE: 1"=40'

DES. BY: MRA

DRW. BY: MRA

CHK. BY: MRA

PRJ. NO.: 23125

REVISIONS

NO.

DATE

BY

DESCRIPTION

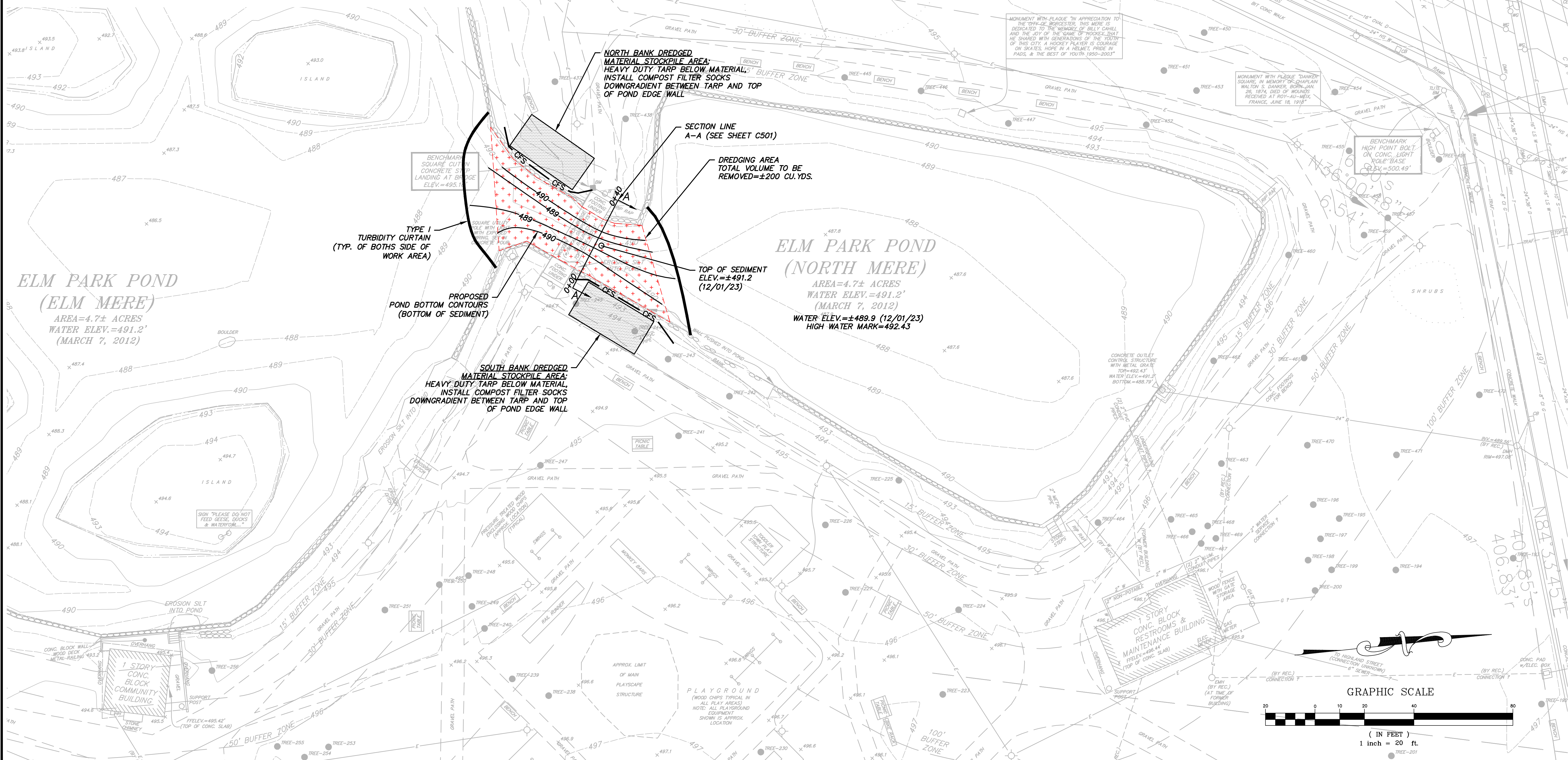


# SHEET NOTES

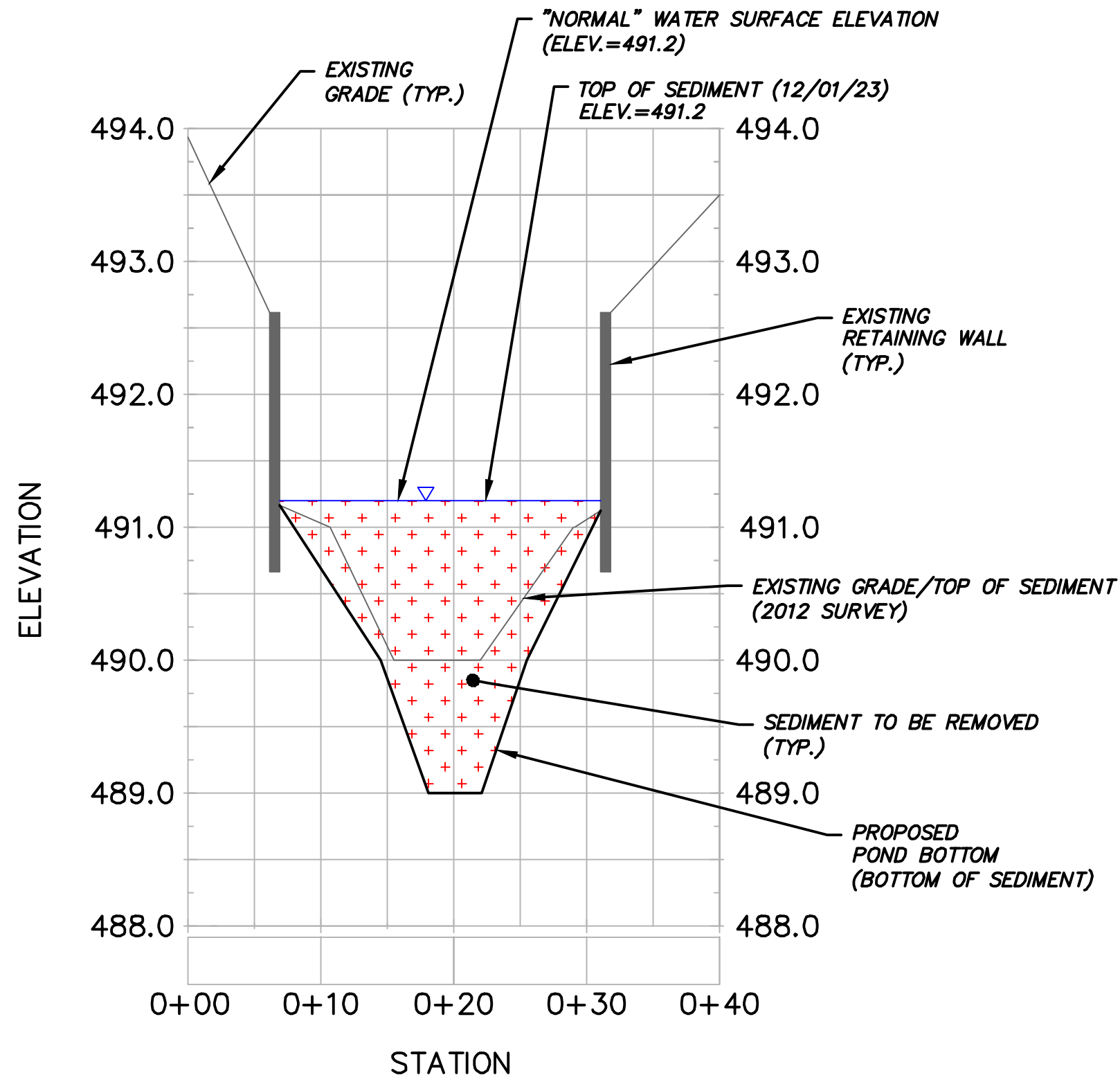
- 1) THE PROJECT IS SUBJECT TO THE CONDITIONS OF AN ORDER OF CONDITIONS ISSUED BY THE WORCESTER CONSERVATION COMMISSION, DATED DECEMBER 7, 2022. THE CONTRACTOR IS RESPONSIBLE FOR COMPLIANCE WITH ALL CONTRACTOR-RELATED CONDITIONS OF THE ORDER.
- 2) CONTRACTOR STAGING AND STORAGE AREAS SHALL BE COORDINATED WITH THE CITY OF WORCESTER DPW IN APPROVED LOCATIONS ONLY. ALL STAGING AND STORAGE AREAS SHALL BE SECURED WITH FENCING AND RINGED WITH STRAW BATTLES.
- 3) LIMITS OF WORK SHALL BE CONTAINED TO THOSE ONLY IMMEDIATELY ADJUTING WORK AREAS SHOWN ON THESE DRAWINGS.

## CONSTRUCTION SEQUENCING NOTES

- 1) INSTALL TURBIDITY CURTAINS AND ANY NECESSARY SEDIMENT CONTROLS IN THE WORK AREAS.
- 2) THE PROJECT WILL REMOVE APPROXIMATELY 200 CUBIC YARDS OF MATERIAL FROM THE PROPOSED DREDGING AREA. DREDGING SHALL BE CONDUCTED BY A TRUXOR HARVESTER AMPHIBIOUS MACHINE WITH CLAMSHELL OR OTHER HYDRAULIC DIGGER ATTACHMENT (ENTERED INTO THE POND AS SHOWN ON SHEET C102)
- 3) DREDGED SEDIMENT SHALL BE LIVE LOADED INTO A WATER TIGHT TRUCK FOR IMMEDIATE OFFSITE DISPOSAL. IF NECESSARY, TEMPORARY (48 HOURS MAXIMUM) STOCKPILING MAY BE ALLOWED IN THE STOCKPILE AREAS SHOWN ON THIS SHEET.
- 4) ONCE ALL WORK IS COMPLETED, ALL DISTURBED AREAS SHALL BE RESTORED TO EXISTING CONDITION OR BETTER AND TO THE SATISFACTION OF THE CITY OF WORCESTER DPW.

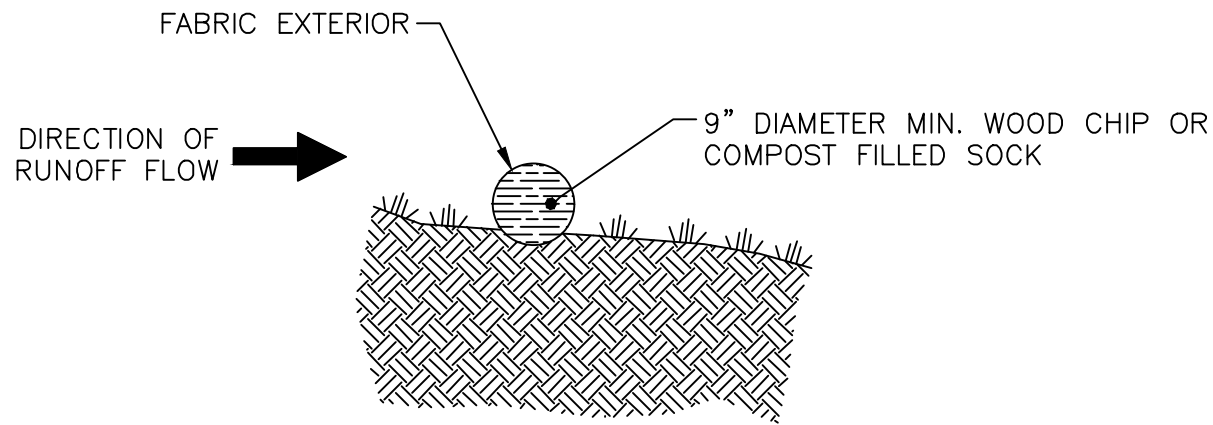
[illegible]





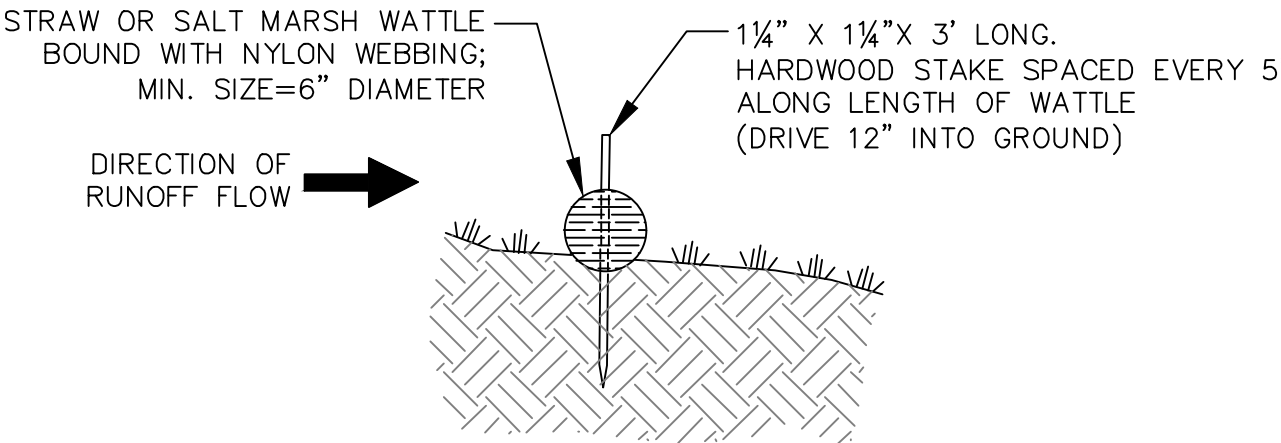
**POND SECTION A-A**

SCALE:  
H: 1"=10'  
V: 1"=1'



**COMPOST FILTER SOCK** NTS

NOTE:  
1) PROVIDE A 3' TO 6' LEVEL AREA BETWEEN THE SILT SOCK AND THE TOE OF ANY SLOPE TO PROVIDE AREA FOR SEDIMENT ACCUMULATION.



**STRAW WATTLE** NTS

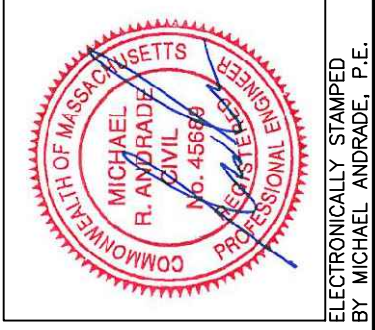
NOTE: PROVIDE A 3' TO 6' LEVEL AREA BETWEEN THE WATTLE AND THE TOE OF ANY SLOPE TO PROVIDE AREA FOR SEDIMENT ACCUMULATION.

GRAVES

ENGINEERING, Inc.

100 GROVE STREET | WORCESTER, MA 01605  
T: 508-856-0321 | F: 508-856-0357  
gravesengineering.com

NO.	DATE	BY	DESCRIPTION
1	08/26/24	MRA	ISSUED FOR BID & CONSTRUCTION



SECTION AND SITE DETAILS			
POND DREDGING			
ELM PARK POND, 121 RUSSELL STREET, WORCESTER, MA			
PREPARED FOR:	CITY OF WORCESTER		
	455 MAIN STREET, WORCESTER MA 01608		
DATE: 08/26/24	SCALE: 1"=40'	DES. BY: MRA	DRW. BY: MRA
		CHK. BY: MRA	PRJ. NO.: 23125