

CLASSROOM RENOVATIONS
AT THE
CHANDLER MAGNET ELEMENTARY SCHOOL
FOR
WORCESTER PUBLIC SCHOOLS

525 CHANDLER ST
WORCESTER, MA

MAY 31, 2023



CHANDLER MAGNET ELEMENTARY

LIST OF DRAWINGS

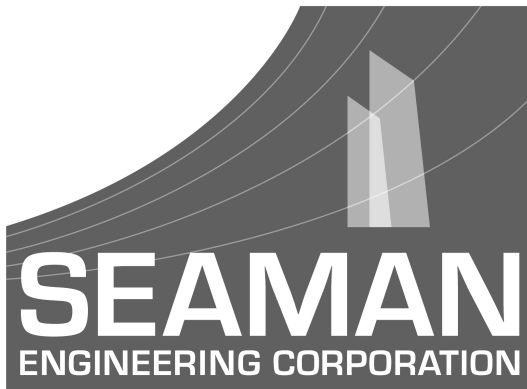
- T1- COVER SHEET
- A1 - DEMOLITION PLAN AND DETAILS
- A2 - NEW ELEVATIONS, PLANS AND DETAILS - ROOM 118
- A3 - NEW ELEVATIONS, PLANS AND DETAILS - ROOM 122A
- A4 - NEW ELEVATIONS, PLANS AND DETAILS - ROOM 122B
- E1.0 - ELECTRICAL FLOOR PLANS

DRAWING TITLE	
COVER SHEET	
JOB NUMBER: NAULT #1676 JOB TITLE: CLASSROOM RENOVATIONS AT THE CHANDLER MAGNET ELEM. SCHOOL WORCESTER PUBLIC SCHOOLS	
CONSULTANT	
ARCHITECT	
NAULT ARCHITECTS, INC. 71 HOPE AVENUE WORCESTER, MA 01603 TEL: (508) 754-4104 FAX: (508) 754-4551	
SCALE	DRAWING NO.
AS NOTED	T1
DATE	MAY 31, 2023

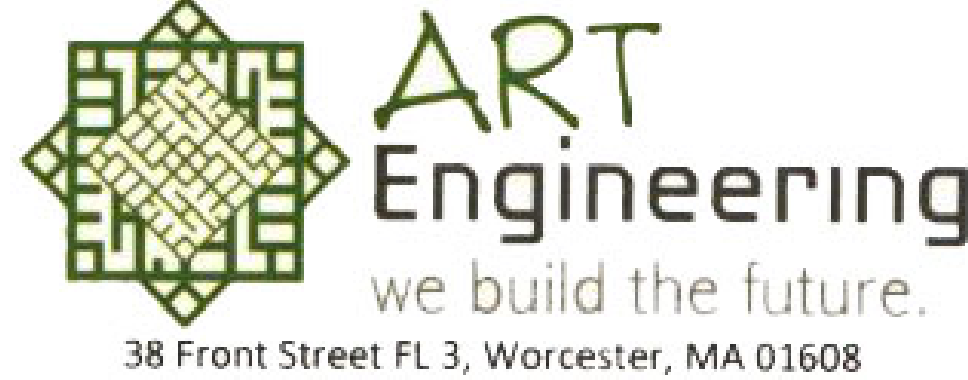
ARCHITECT:

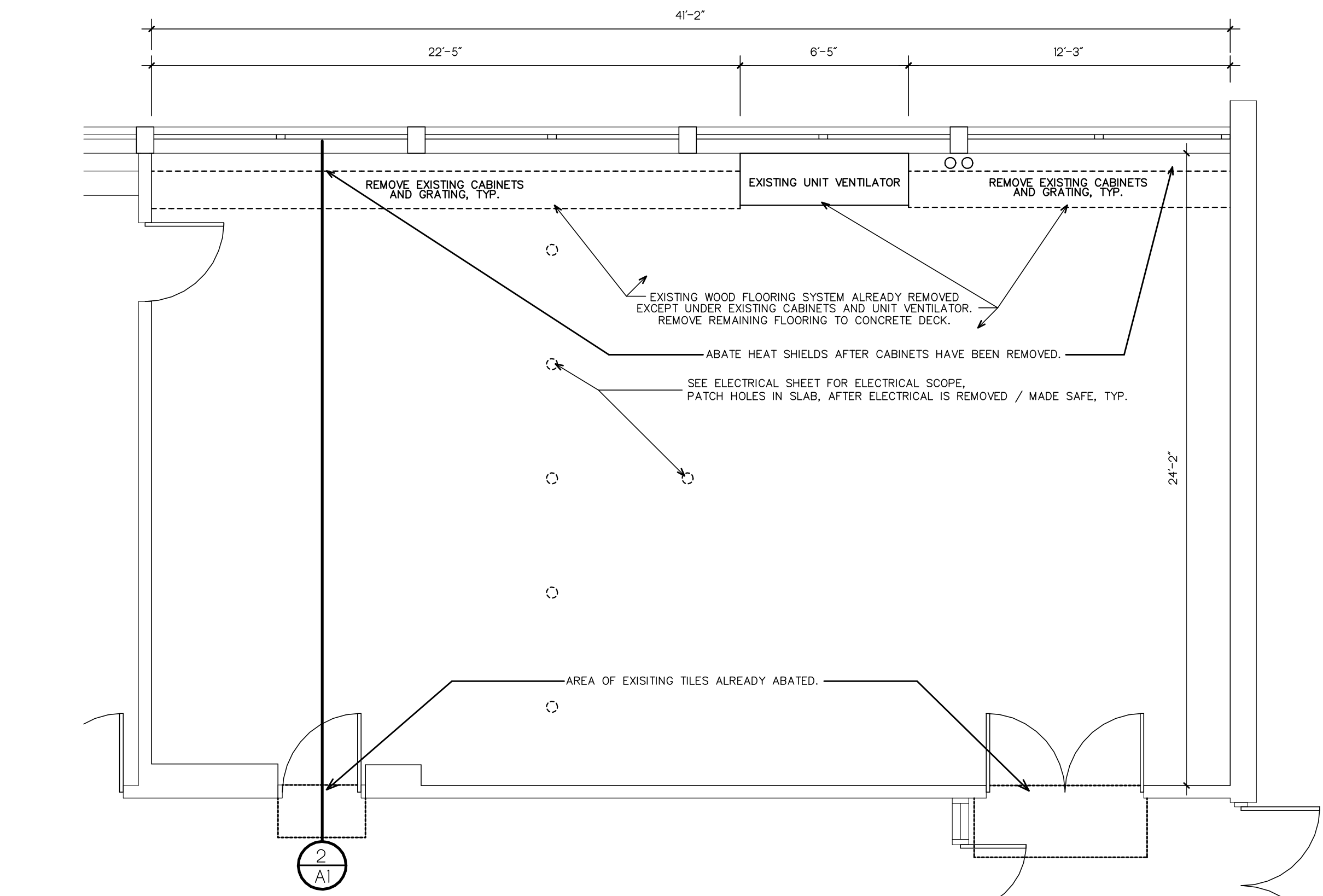
NAULT ARCHITECTS, INC.
71 HOPE AVENUE
WORCESTER, MA 01603
TEL: (508) 755-6134
FAX: (508) 754-4661

MECH / PLUMBING ENGINEER:

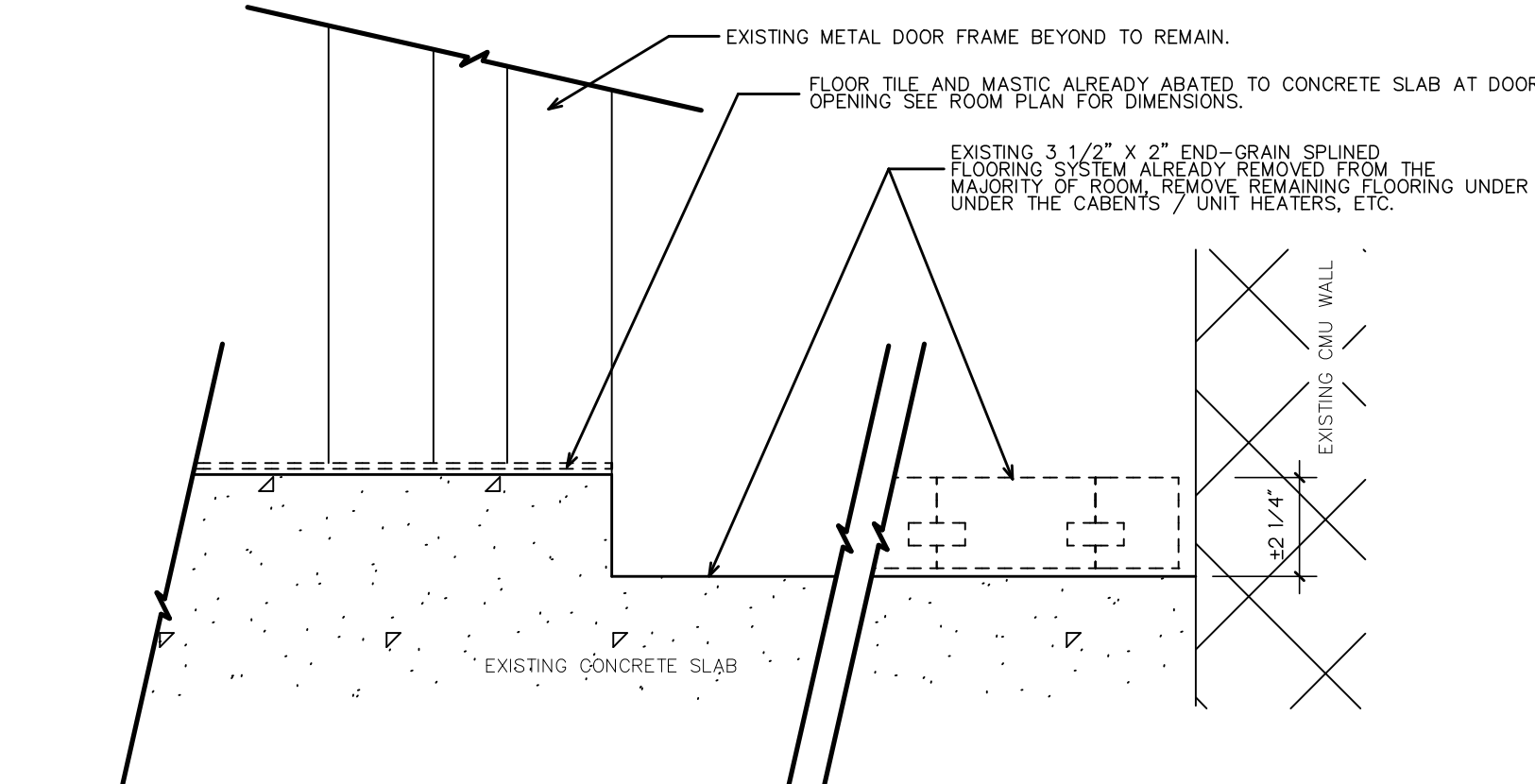


ELECTRICAL ENGINEER:





1 ROOM 118: DEMOLITION PLAN
1/4" = 1'-0"



2 ROOM 118: FLOOR DEMOLITION DETAIL
2" = 1'-0"

GENERAL NOTES

- 1) ALL CONTRACTOR SHALL FIELD VERIFY ALL DIMENSIONS AND LOCATIONS PRIOR TO THE START OF THE WORK.
- 2) ALL EXISTING WALLS ARE CMU, UNLESS SPECIFICALLY NOTED TO BE ANOTHER MATERIAL.

MECHANICAL SCOPE AT EXISTING UNIT VENTILATORS TO BE REMOVED & REINSTALLED:

SHUT OFF THE BALL VALVE AND CIRCUIT SETTER ON THE HWS & R PIPING SERVING THE UNIT VENTILATORS. DRAIN THE UNIT VENTILATOR COIL AND THE ASSOCIATED PIPING.

DISCONNECT THE PIPING TO THE UNIT VENTILATOR COIL AT THE PIPE UNIONS.

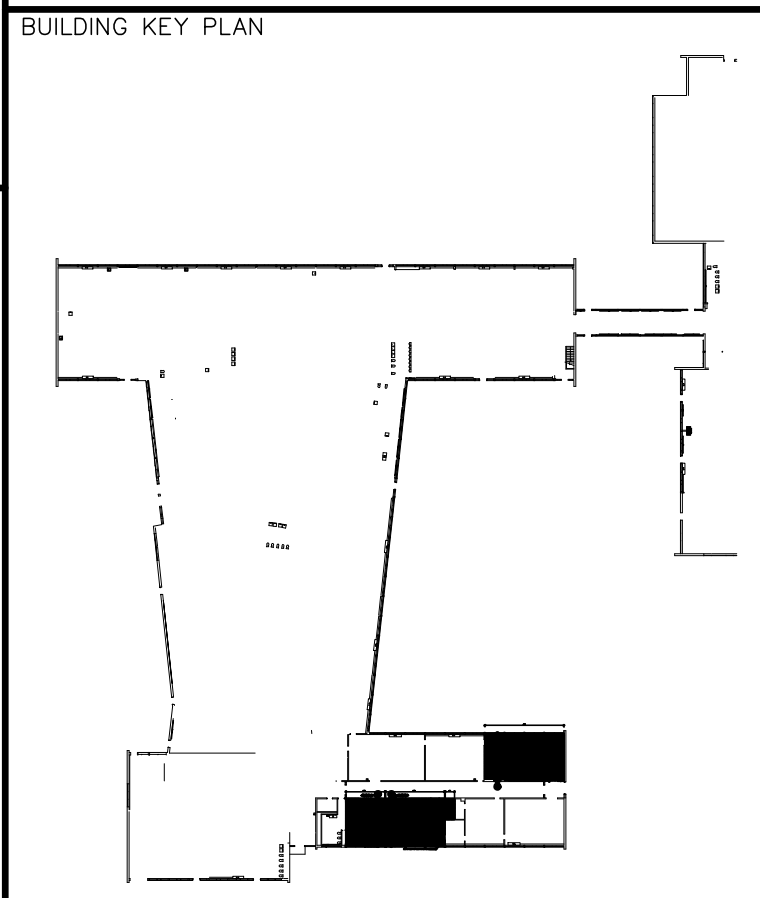
DISCONNECT, REMOVE AND SALVAGE THE UNIT VENTILATOR. ALSO, DISCONNECT AND WIRING AND CONTROLS.

PROVIDE A PIPING LOOP OFF OF THE PIPE UNIONS TO ENSURE FLOW AND NO LEAKS IN CASE THE BALL VALVE OR CIRCUIT SETTER DO NOT HOLD.

DISCONNECT AND REMOVE ANY ABANDONED FINTUBE RADIATION ON THE EXISTING WALL. CAP PIPING AND MAKE SAFE.

ONCE THE FLOORING IS INSTALLED:

- 1) REMOVE THE TEMPORARY PIPING LOOP BETWEEN THE PIPE UNIONS.
- 2) REINSTALL THE UNIT VENTILATOR AND RECONNECT TO THE EXISTING PIPING.
- 3) REFILL THE UNIT FROM THE SYSTEM AND PURGE ANY AIR IN THE LINES. SET THE CIRCUIT SETTER TO THE PRE-CONSTRUCTION SETTING.
- 4) RECONNECT TO THE POWER AND CONTROL WIRING.
- 5) TEST THE UNIT VENTILATOR TO MAKE SURE IT WORKS PROPERLY.



DRAWING TITLE

DEMOLITION PLANS AND DETAILS

JOB NUMBER: NAULT #1676
JOB TITLE

CLASSROOM RENOVATIONS
AT THE
CHANDLER MAGNET ELEM. SCHOOL
WORCESTER PUBLIC SCHOOLS

CONSULTANT

ARCHITECT

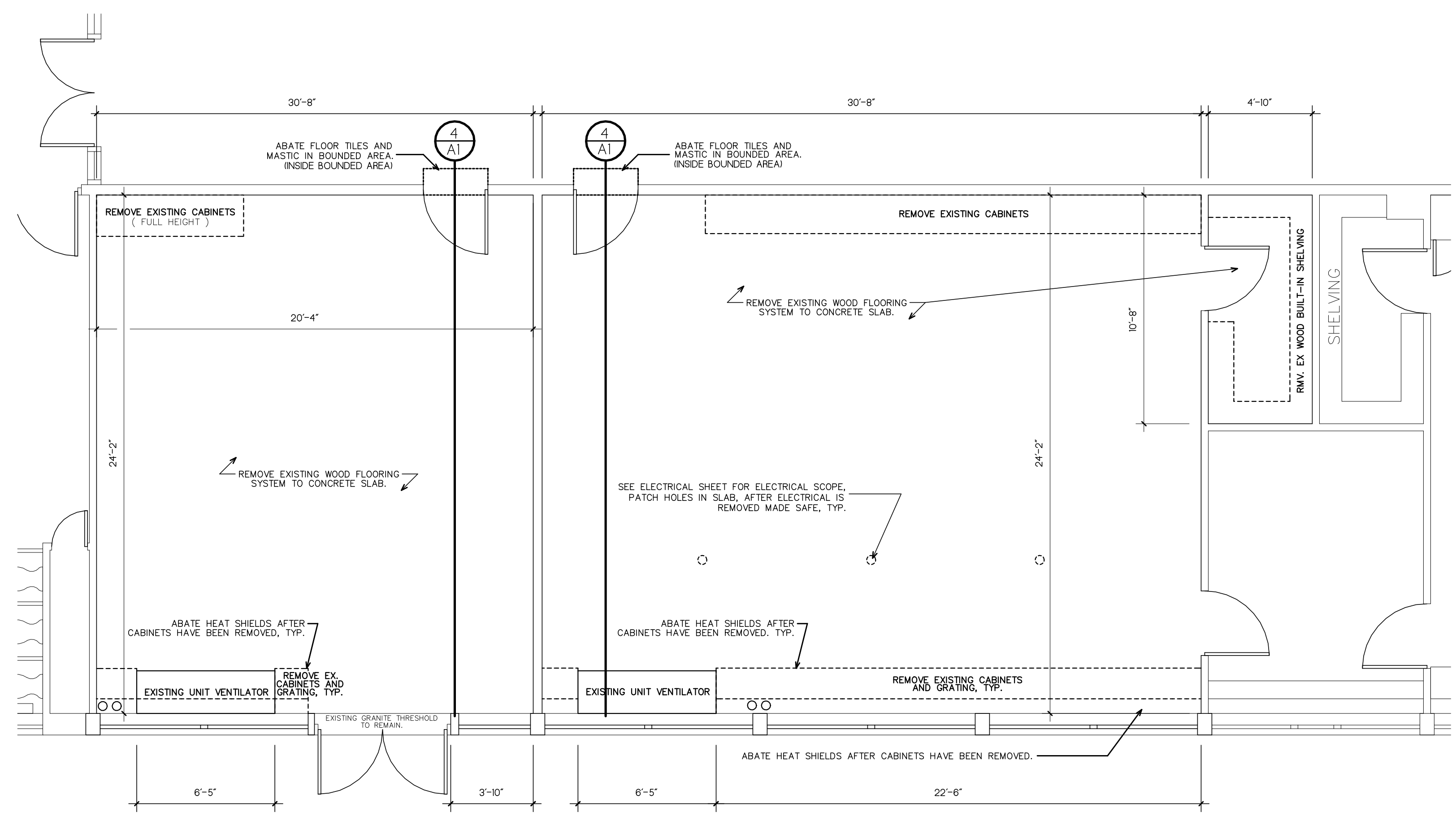
NAULT ARCHITECTS, INC.
17 HOPKINS AVENUE
WORCESTER, MA 01603
TEL: (508) 755-6134
FAX: (508) 754-4861

DRAWING NO.

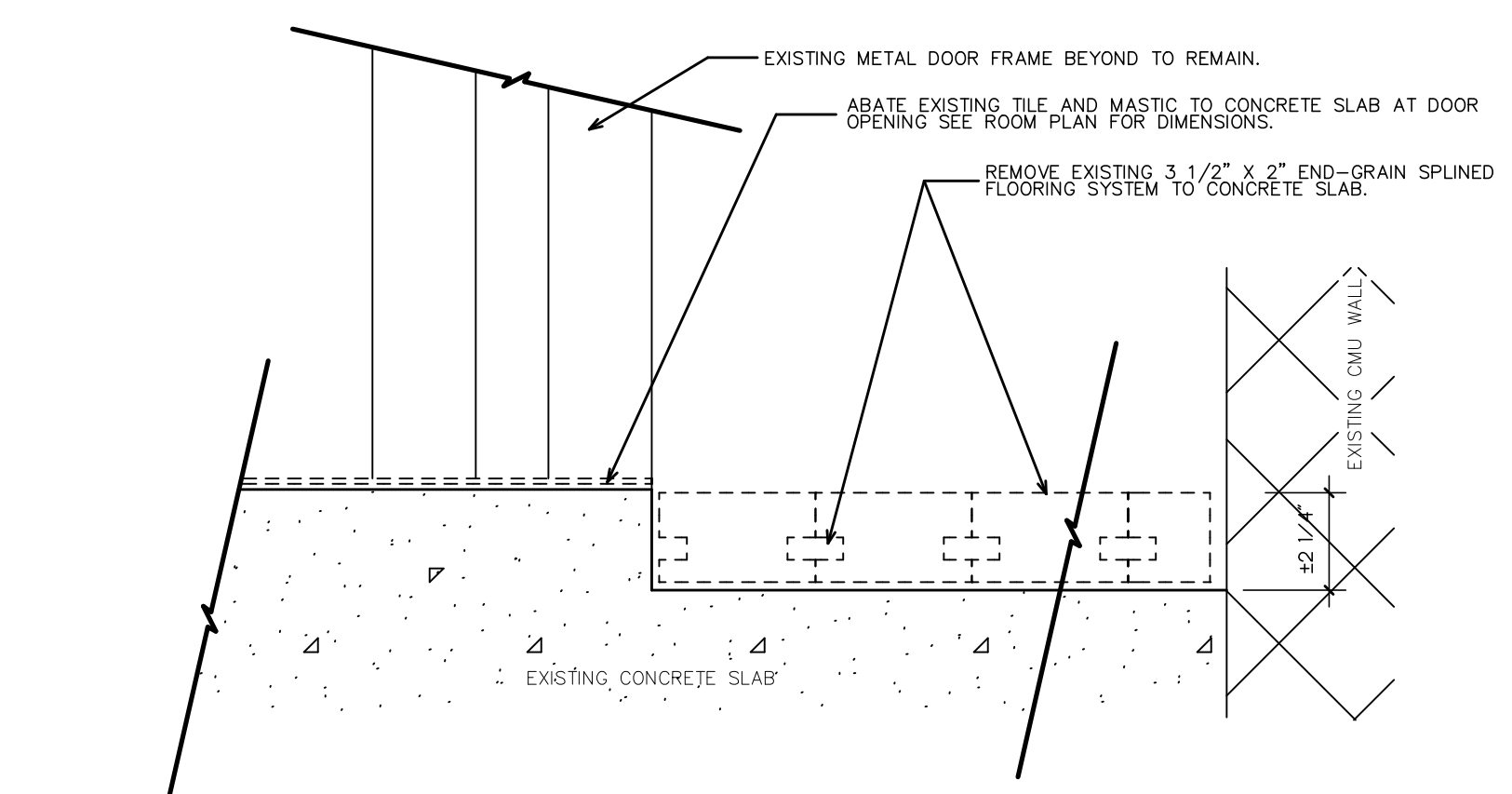
A1

SCALE: AS NOTED

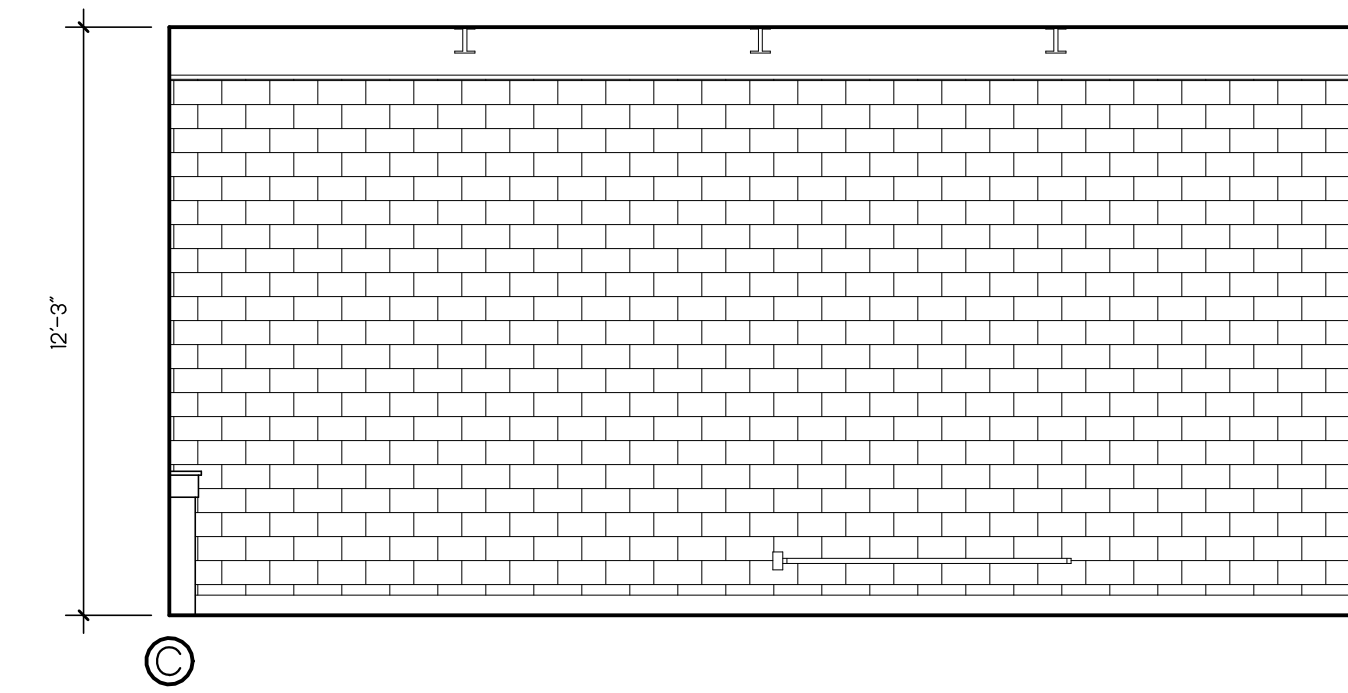
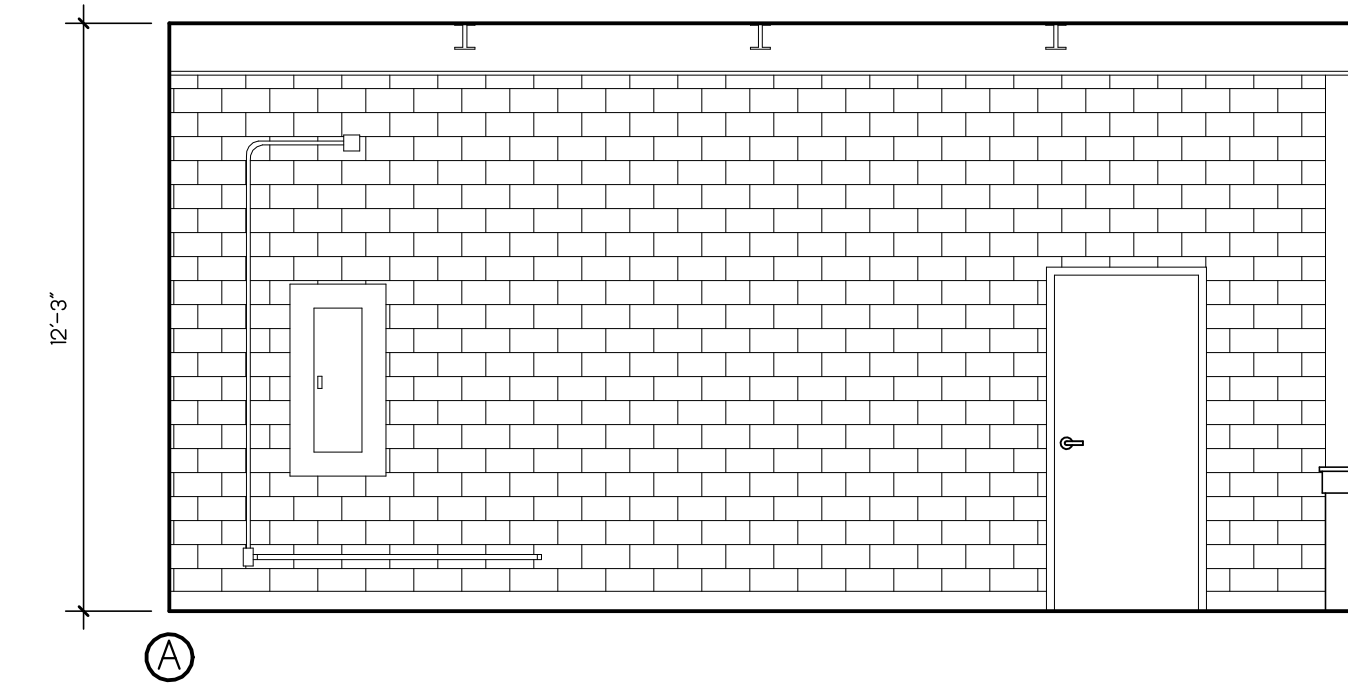
DATE: MAY, 31 2023



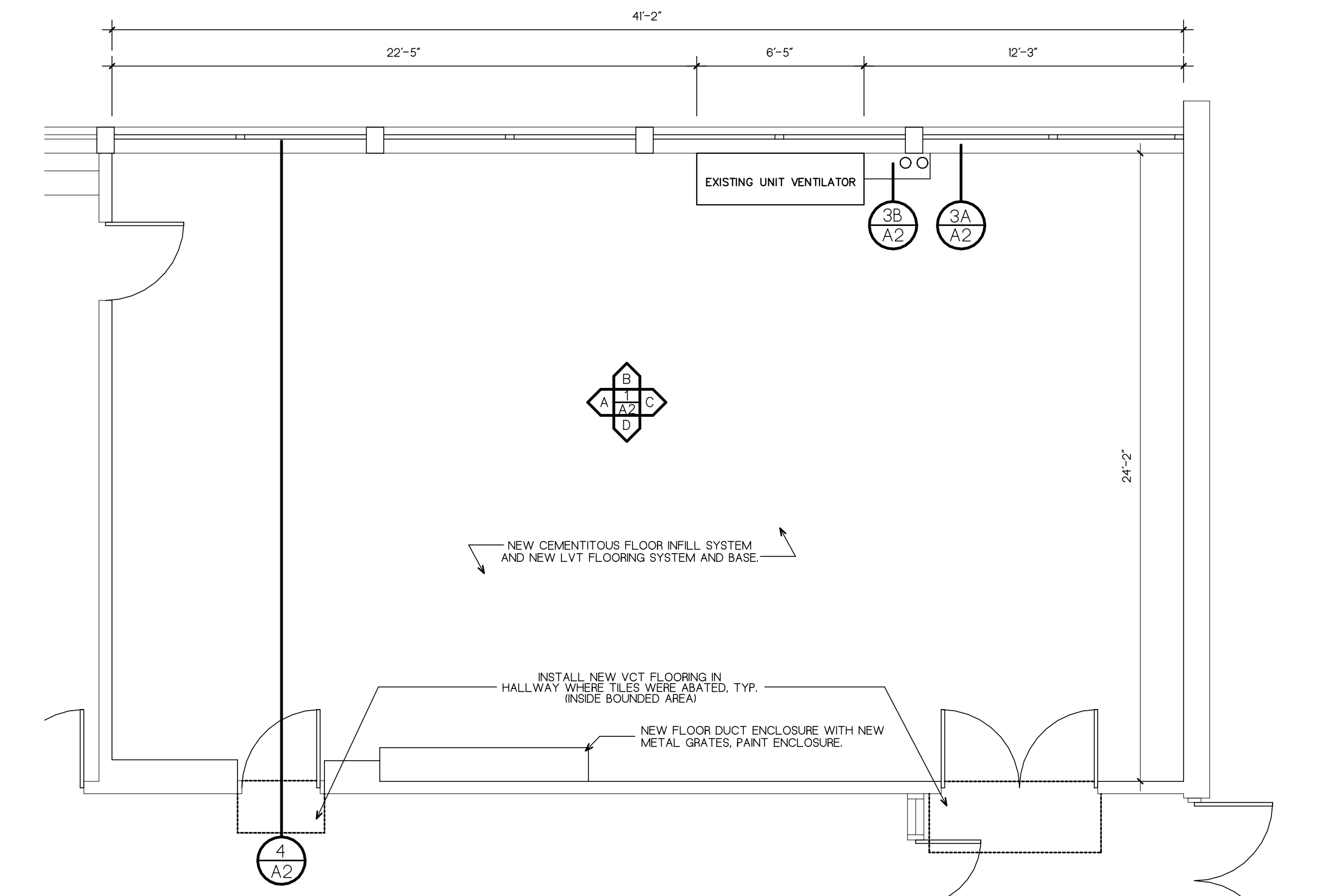
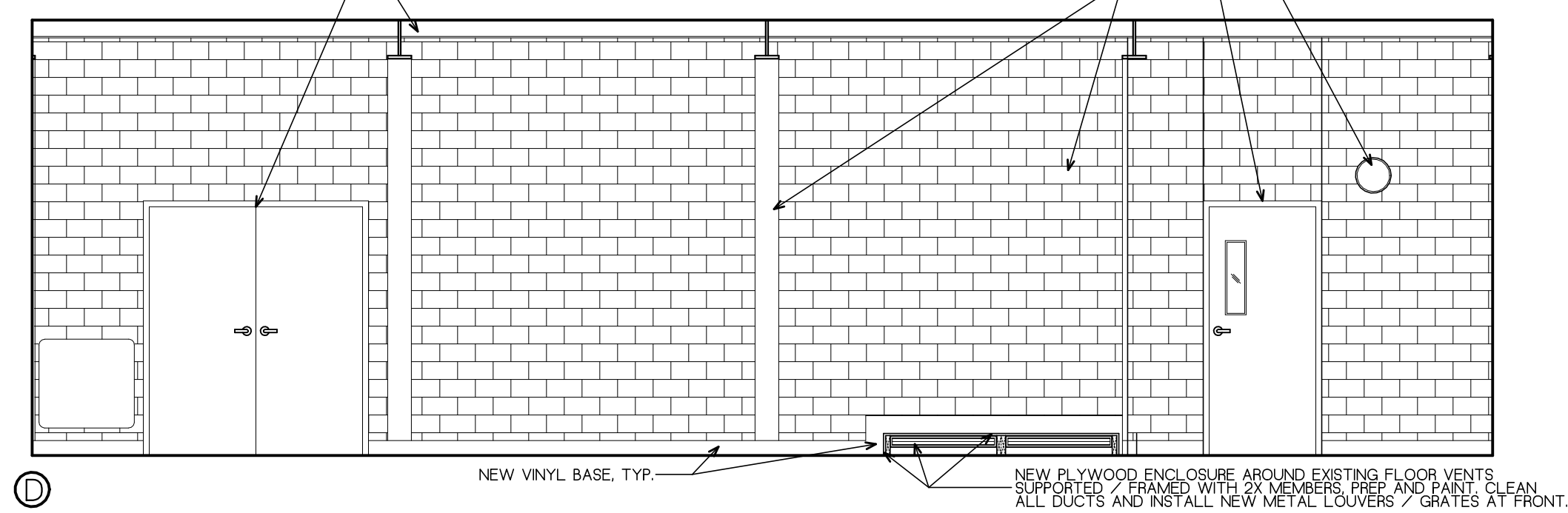
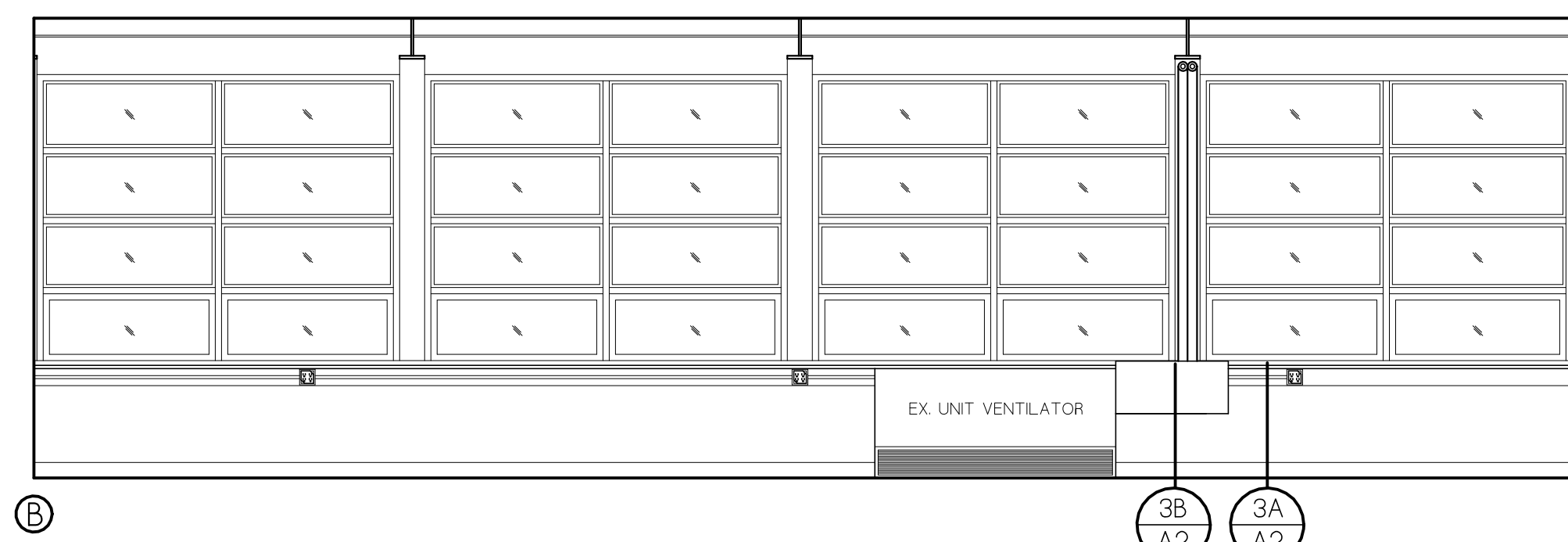
3 ROOM 122A / 122B: DEMOLITION PLAN
1/4" = 1'-0"



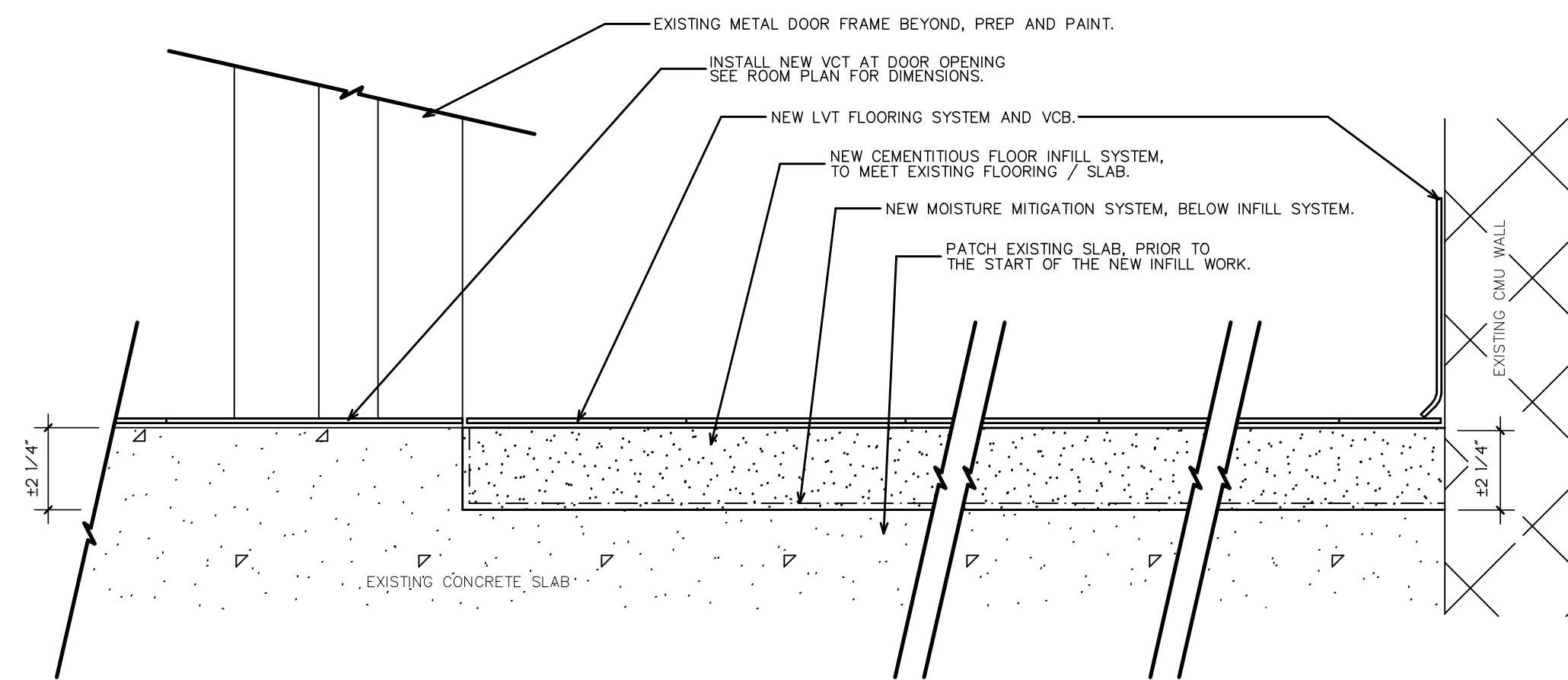
4 ROOM 122A / 122B: FLOOR DEMOLITION DETAIL
2" = 1'-0"



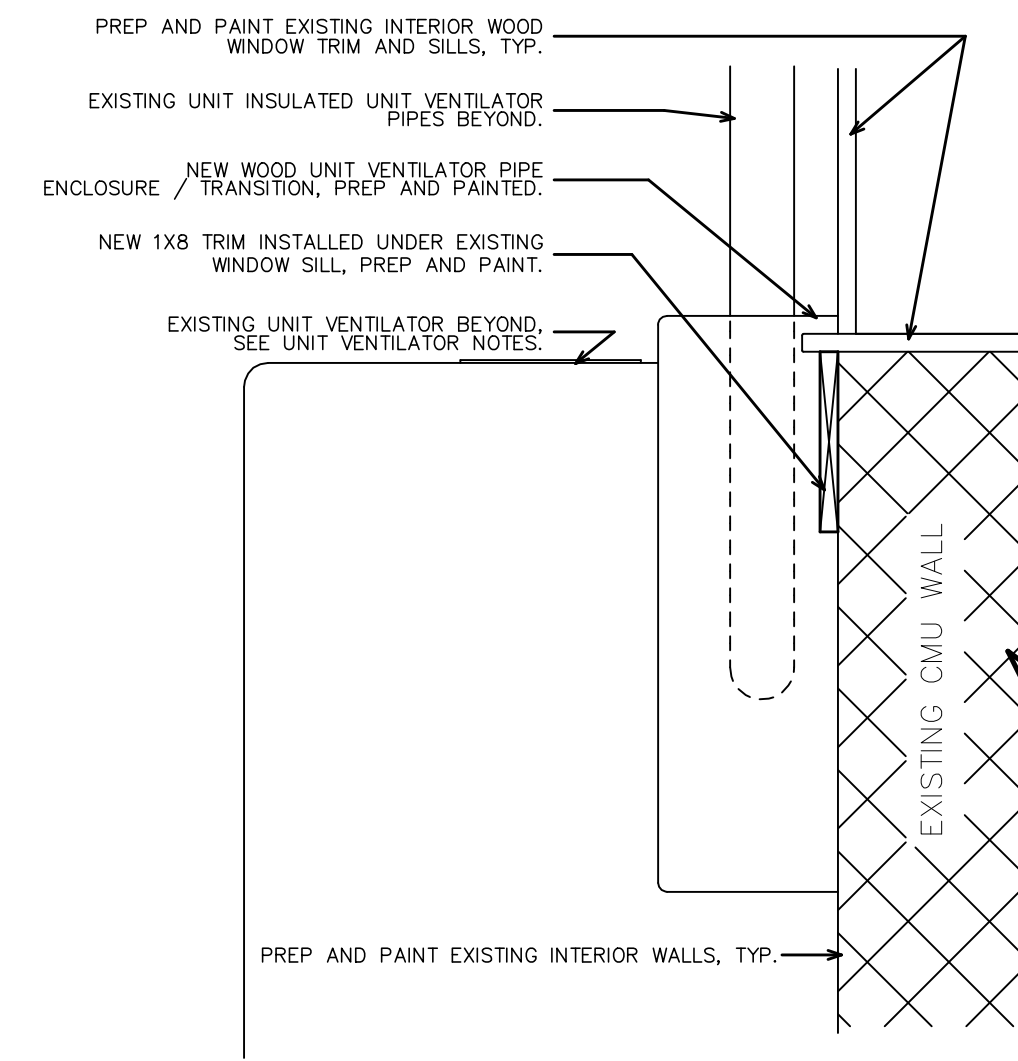
1 ROOM 118: NEW ELEVATIONS
1/4" = 1'-0"



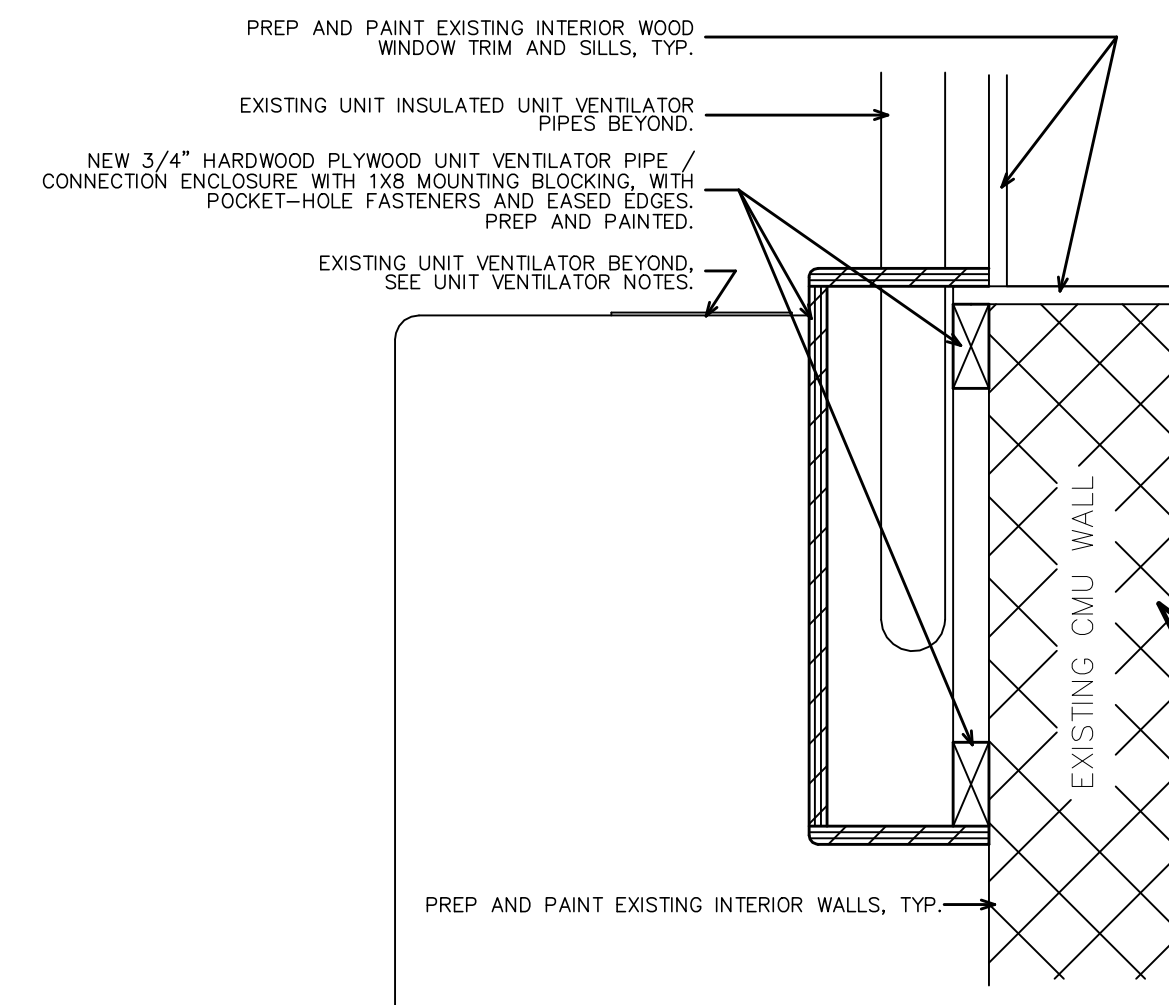
2 ROOM 118: NEW PLAN
1/4" = 1'-0"



4 ROOM 118: TYPICAL NEW FLOOR DETAILS
3" = 1'-0"



3A ROOM 118: SECTION AT EXTERIOR WALL / WINDOW
1 1/2" = 1'-0"



3B ROOM 118: SECTION AT UNIT VENTILATOR ENCLOSURE / TRIM
1 1/2" = 1'-0"

GENERAL NOTES

- 1) ALL CONTRACTOR SHALL FIELD VERIFY ALL DIMENSIONS AND LOCATIONS PRIOR TO THE START OF THE WORK.
- 2) ALL EXISTING WALLS ARE CMU, UNLESS SPECIFICALLY NOTED TO BE ANOTHER MATERIAL.

MECHANICAL SCOPE AT EXISTING UNIT VENTILATORS TO BE REMOVED & REINSTALLED:

SHUT OFF THE BALL VALVE AND CIRCUIT SETTER ON THE HWS & R PIPING SERVING THE UNIT VENTILATORS. DRAIN THE UNIT VENTILATOR COIL AND THE ASSOCIATED PIPING.

DISCONNECT THE PIPING TO THE UNIT VENTILATOR COIL AT THE PIPE UNIONS.

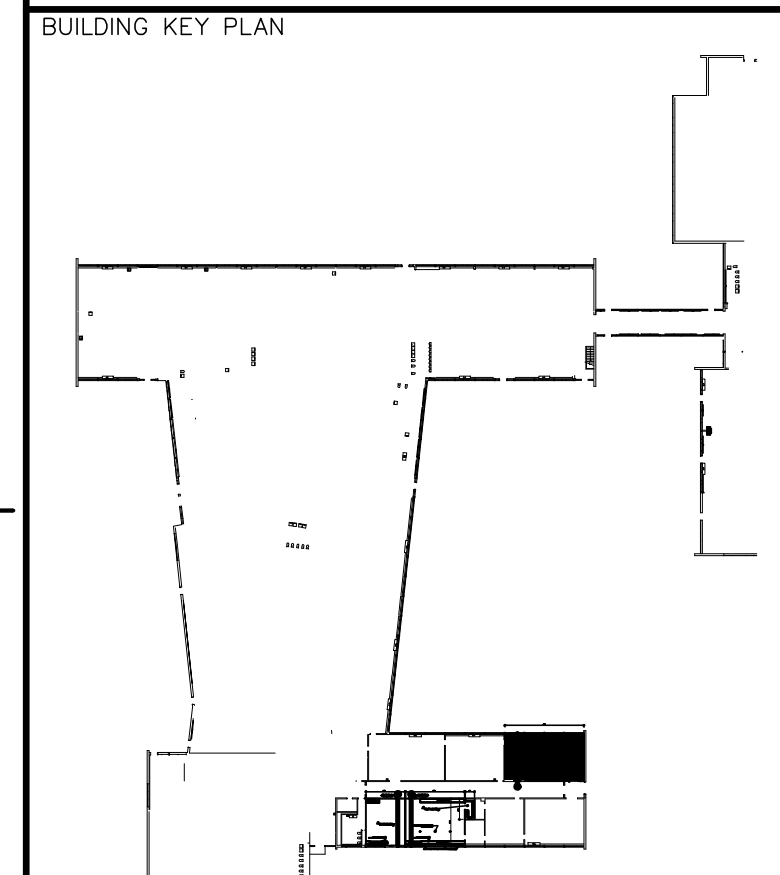
DISCONNECT, REMOVE AND SALVAGE THE UNIT VENTILATOR. ALSO, DISCONNECT AND WIRING AND CONTROLS.

PROVIDE A PIPING LOOP OFF OF THE PIPE UNIONS TO ENSURE FLOW AND NO LEAKS IN CASE THE BALL VALVE OR CIRCUIT SETTER DO NOT HOLD.

DISCONNECT AND REMOVE ANY ABANDONED FINTUBE RADIATION ON THE EXISTING WALL. CAP PIPING AND MAKE SAFE.

ONCE THE FLOORING IS INSTALLED:

- 1) REMOVE THE TEMPORARY PIPING LOOP BETWEEN THE PIPE UNIONS.
- 2) REINSTALL THE UNIT VENTILATOR AND RECONNECT TO THE EXISTING PIPING.
- 3) REFILL THE UNIT FROM THE SYSTEM AND PURGE ANY AIR IN THE LINES. SET THE CIRCUIT SETTER TO THE PRE-CONSTRUCTION SETTING.
- 4) RECONNECT TO THE POWER AND CONTROL WIRING.
- 5) TEST THE UNIT VENTILATOR TO MAKE SURE IT WORKS PROPERLY.



DRAWING TITLE

NEW ELEVATIONS, PLANS
AND DETAILS
ROOM 118

JOB NUMBER: NAULT #1676
JOB TITLE

CLASSROOM RENOVATIONS
AT THE
CHANDLER MAGNET ELEM. SCHOOL
WORCESTER PUBLIC SCHOOLS

CONSULTANT

ARCHITECT

NAULT ARCHITECTS, INC.
11 W. HOPE AVENUE
WORCESTER, MA 01603
TEL: (508) 755-0134
FAX: (508) 754-4801

DRAWING NO.

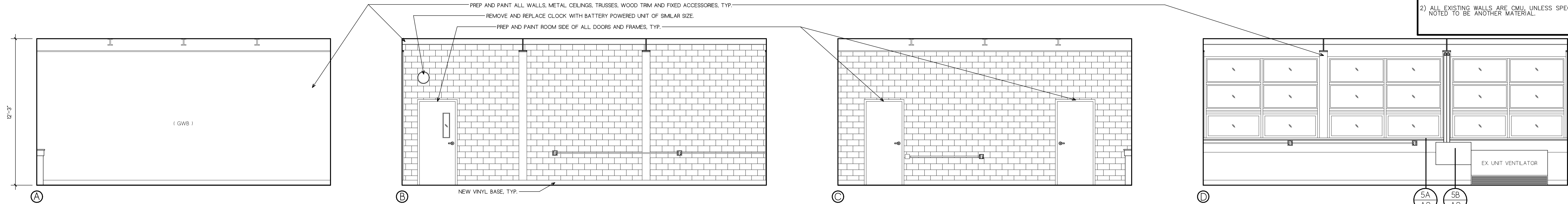
A2

SCALE

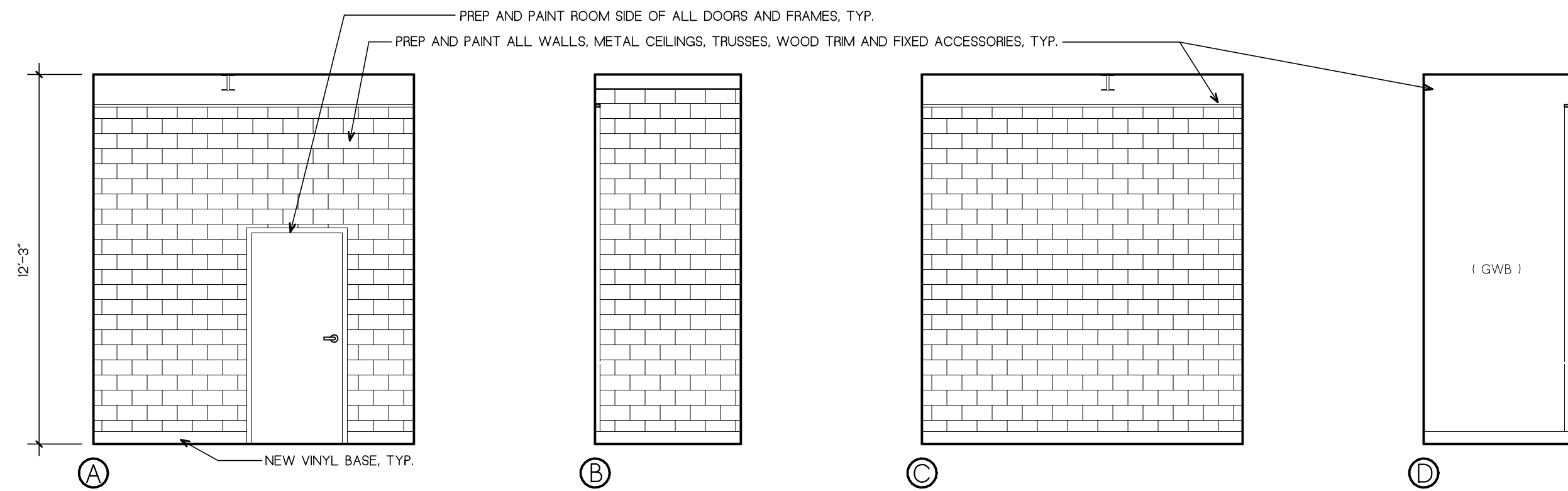
AS NOTED

DATE

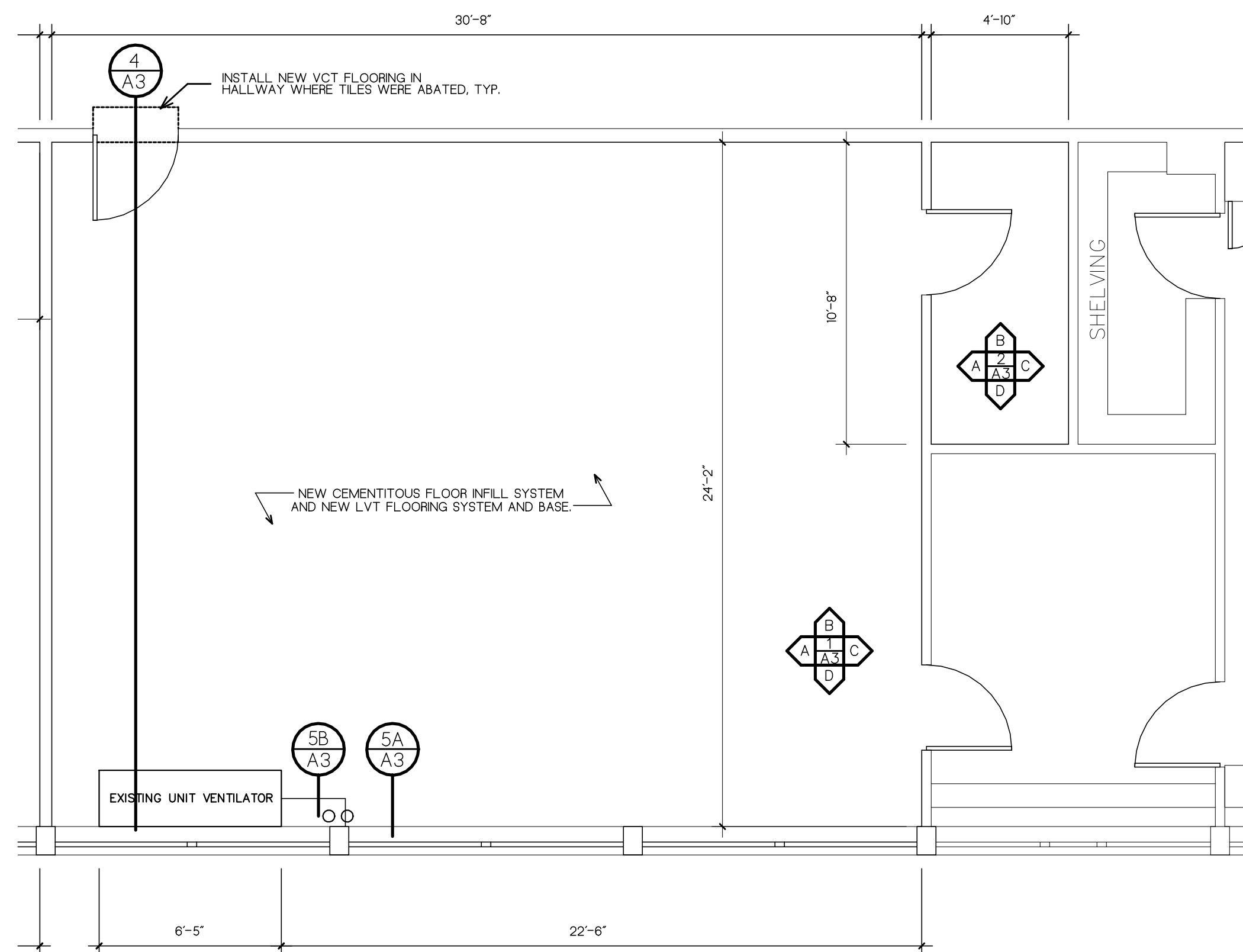
MAY, 31 2023



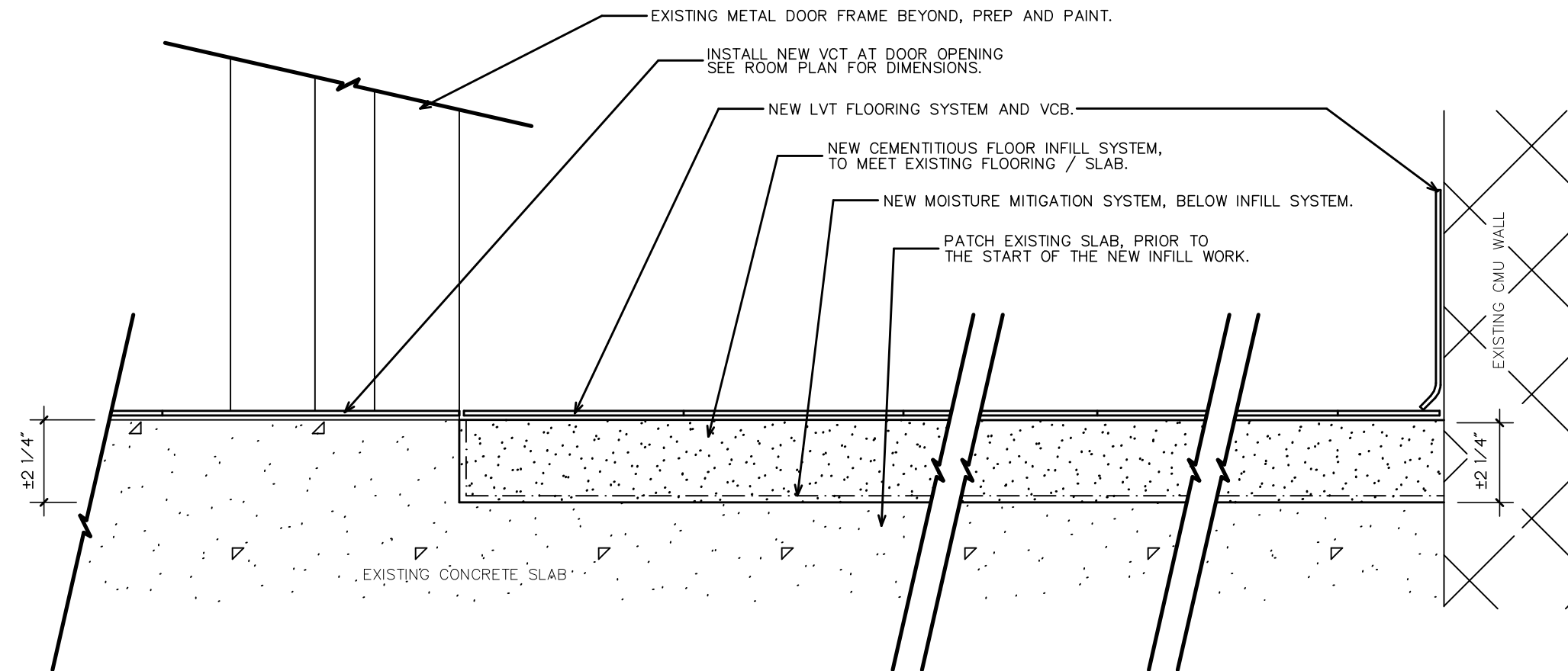
1 ROOM 122A: NEW ELEVATIONS
1/4" = 1'-0"



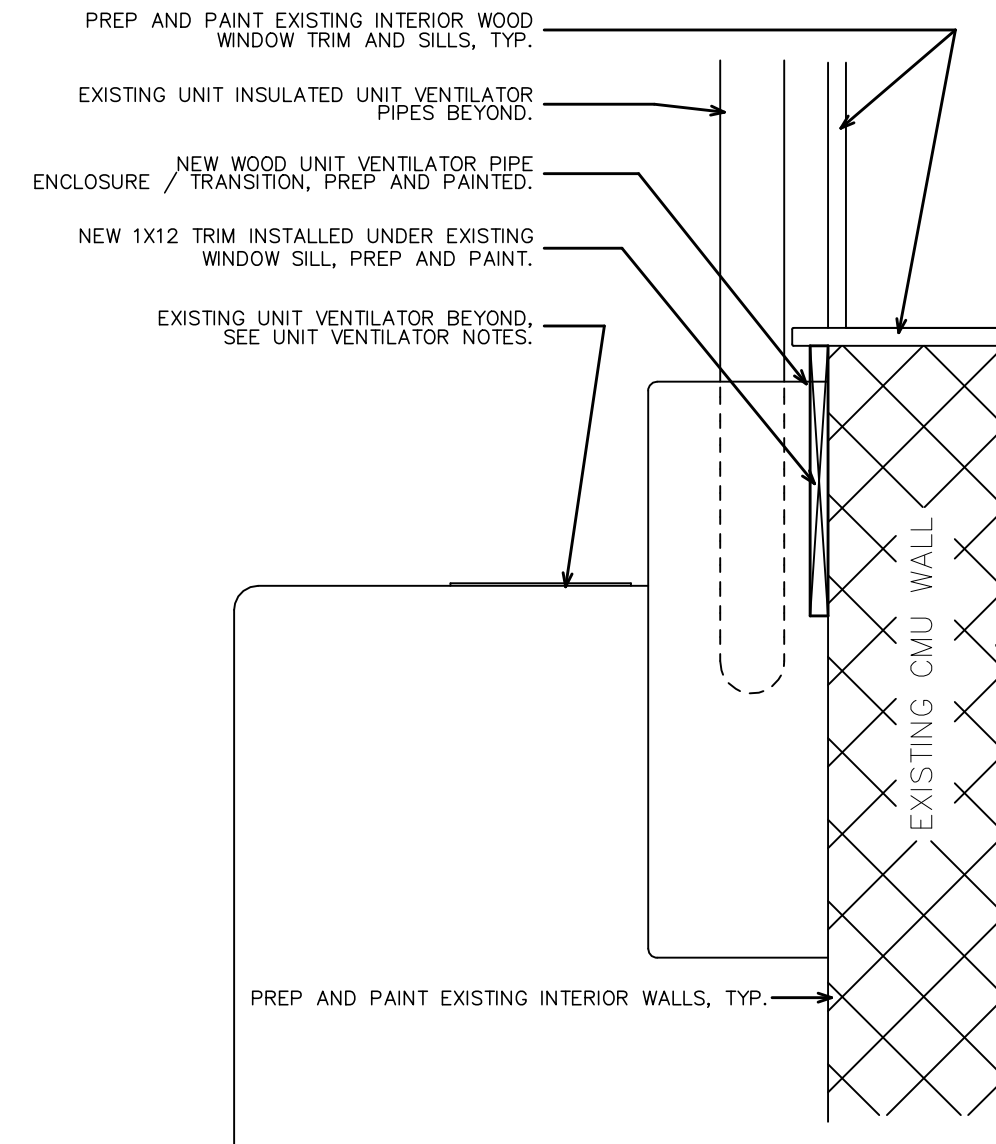
2 ROOM 122A: NEW ELEVATIONS (CLOSET)
1/4" = 1'-0"



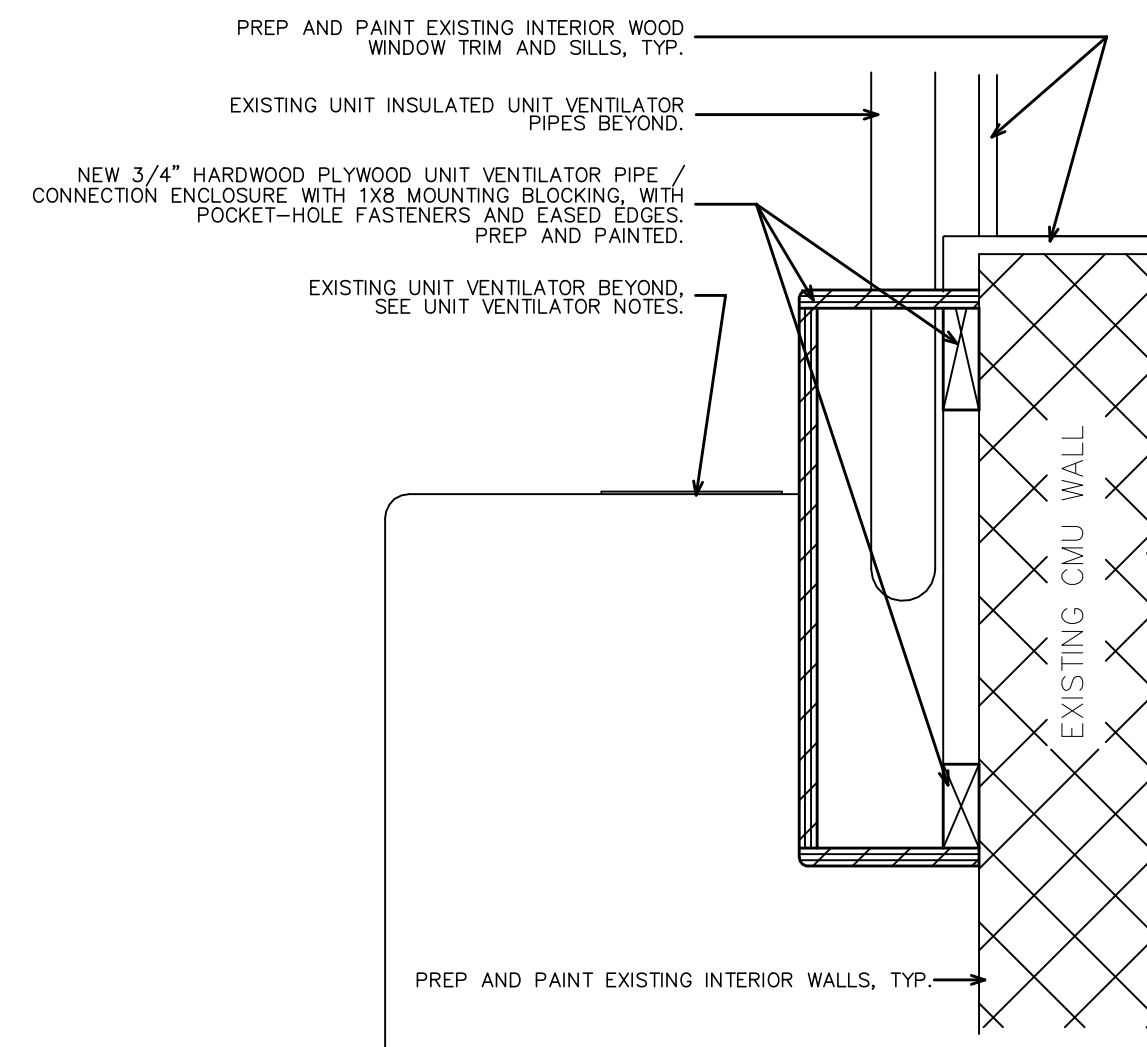
3 ROOM 122A: NEW PLAN
1/4" = 1'-0"



4 ROOM 122A: TYPICAL NEW FLOOR DETAILS
2" = 1'-0"



5A ROOM 122A: SECTION AT EXTERIOR WALL / WINDOW SILL
2" = 1'-0"



5B ROOM 122A: SECTION AT UNIT VENTILATOR ENCLOSURE / TRIM
2" = 1'-0"

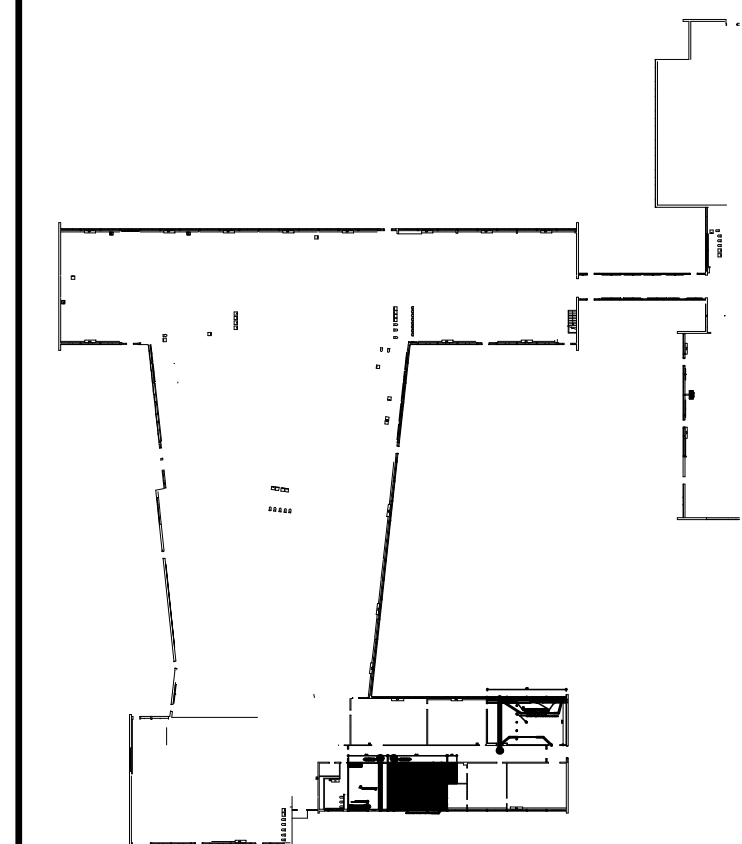
- GENERAL NOTES
- 1) ALL CONTRACTOR SHALL FIELD VERIFY ALL DIMENSIONS AND LOCATIONS PRIOR TO THE START OF THE WORK.
 - 2) ALL EXISTING WALLS ARE CMU, UNLESS SPECIFICALLY NOTED TO BE ANOTHER MATERIAL.

MECHANICAL SCOPE AT EXISTING UNIT VENTILATORS TO BE REMOVED & REINSTALLED.

- SHUT OFF THE BALL VALVE AND CIRCUIT SETTER ON THE HWS & R PIPING SERVING THE UNIT VENTILATORS.
- DRAIN THE UNIT VENTILATOR COIL AND THE ASSOCIATED PIPING.
- DISCONNECT THE PIPING TO THE UNIT VENTILATOR COIL AT THE PIPE UNIONS.
- DISCONNECT, REMOVE AND SALVAGE THE UNIT VENTILATOR. ALSO, DISCONNECT AND WIRING AND CONTROLS.
- PROVIDE A PIPING LOOP OFF OF THE PIPE UNIONS TO ENSURE FLOW AND NO LEAKS IN CASE THE BALL VALVE OR CIRCUIT SETTER DO NOT HOLD.
- DISCONNECT AND REMOVE ANY ABANDONED FINITUBE RADIATION ON THE EXISTING WALL. CAP PIPING AND MAKE SAFE.

- ONCE THE FLOORING IS INSTALLED:
- 1) REMOVE THE TEMPORARY PIPING LOOP BETWEEN THE PIPE UNIONS.
 - 2) REINSTALL THE UNIT VENTILATOR AND RECONNECT TO THE EXISTING PIPING.
 - 3) REFILL THE UNIT FROM THE SYSTEM AND PURGE ANY AIR IN THE LINES. SET THE CIRCUIT SETTER TO THE PRE-CONSTRUCTION SETTING.
 - 4) RECONNECT TO THE POWER AND CONTROL WIRING.
 - 5) TEST THE UNIT VENTILATOR TO MAKE SURE IT WORKS PROPERLY.

BUILDING KEY PLAN



DRAWING TITLE

NEW ELEVATIONS, PLANS
AND DETAILS
ROOM 122A

JOB NUMBER: NAULT #1676
JOB TITLE

CLASSROOM RENOVATIONS
AT THE
CHANDLER MAGNET ELEM. SCHOOL
WORCESTER PUBLIC SCHOOLS

CONSULTANT

ARCHITECT

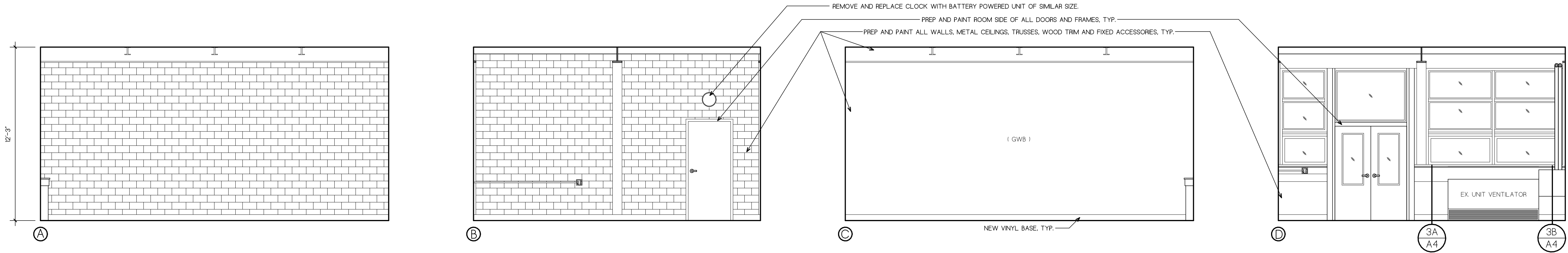
NAULT ARCHITECTS, INC.
17 HOPKINS AVENUE SUITE 100
WORCESTER, MA 01603
TEL: (508) 750-6134
FAX: (508) 750-6861

DRAWING NO.

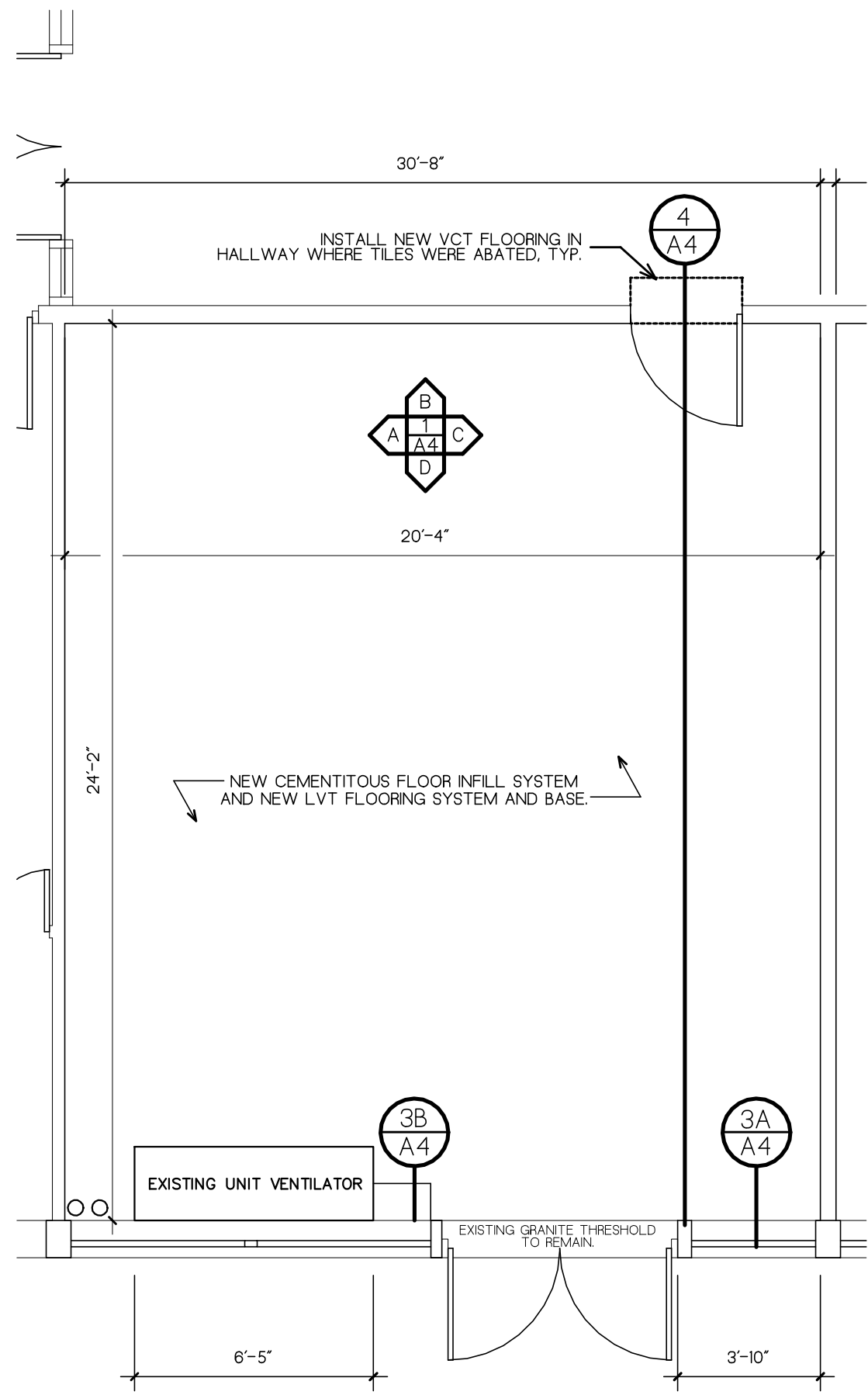
A3

SCALE
AS NOTED

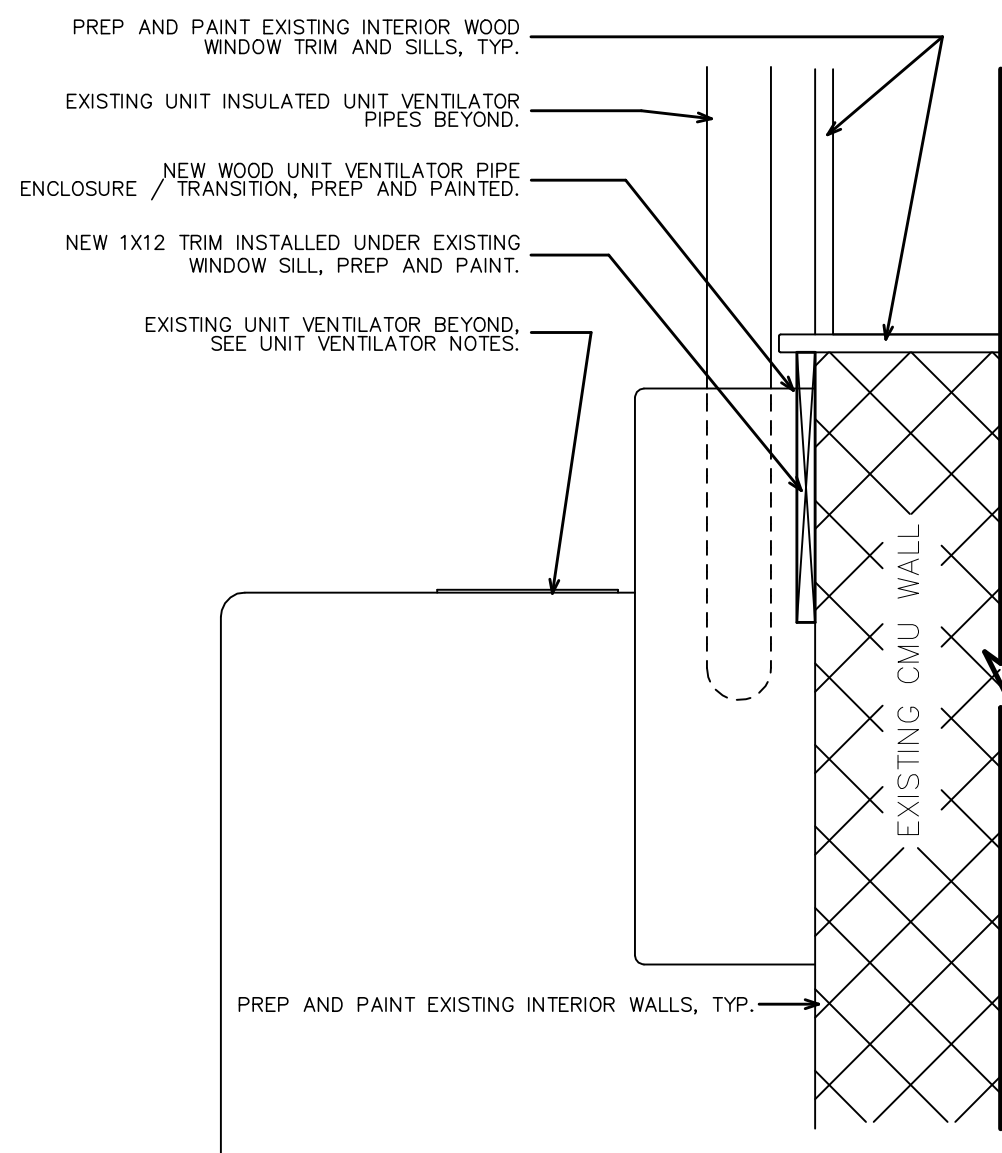
DATE
MAY, 31 2023



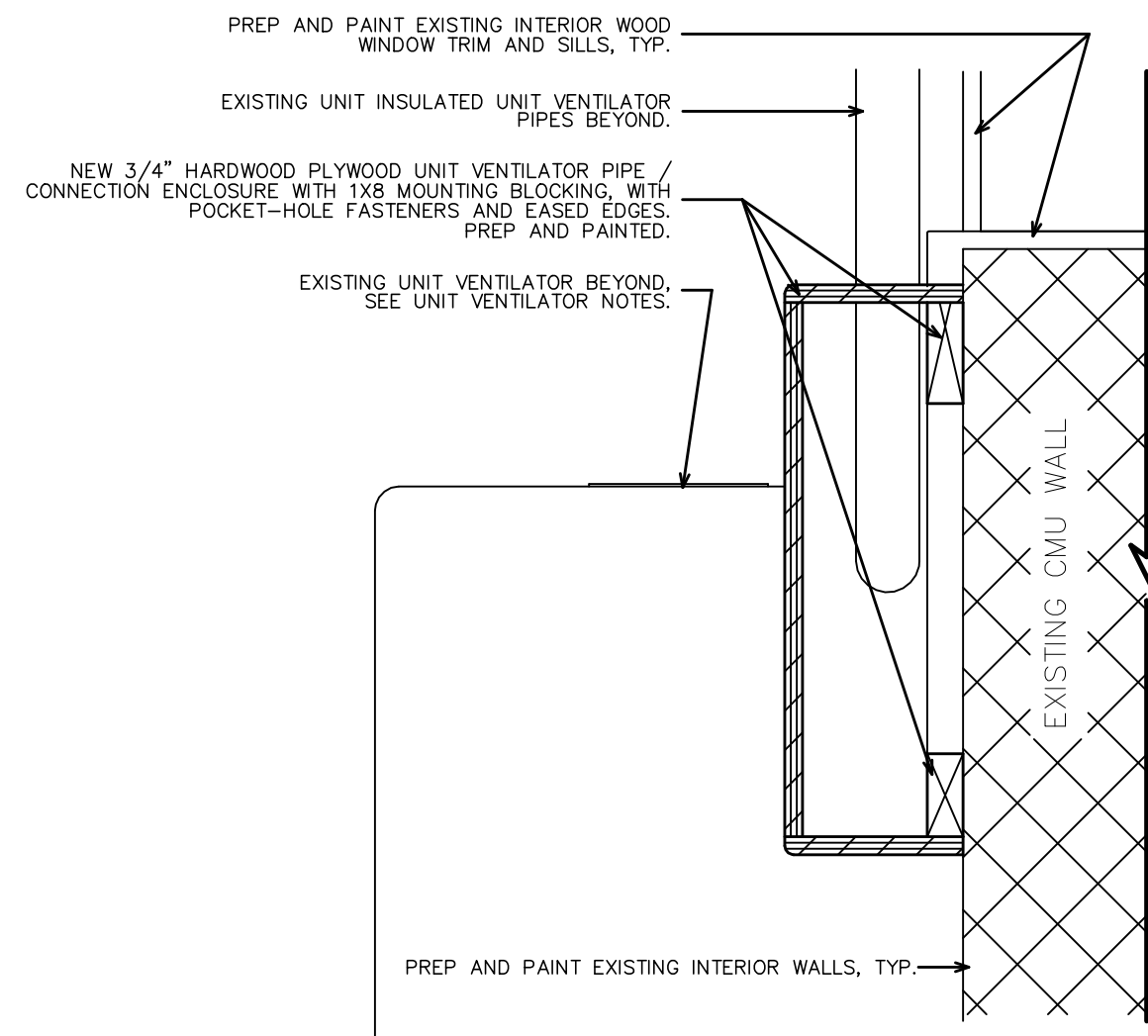
1 ROOM 122B: NEW ELEVATIONS
1/4" = 1'-0"



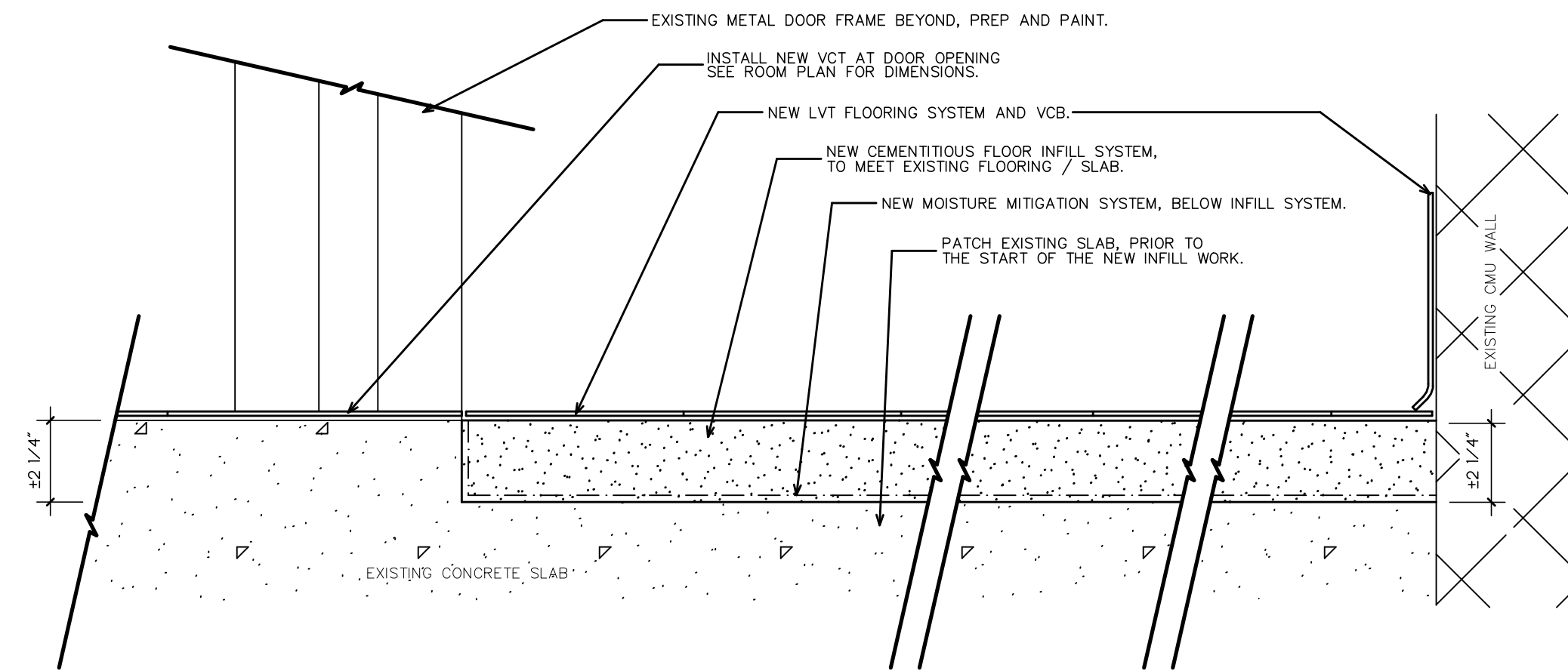
2 ROOM 122B: NEW PLAN
1/4" = 1'-0"



3A ROOM 122B: SECTION AT EXTERIOR WALL / WINDOW SILL
2" = 1'-0"



3B ROOM 122B: SECTION AT UNIT VENTILATOR ENCLOSURE / TRIM
2" = 1'-0"



4 ROOM 122B: TYPICAL NEW FLOOR DETAILS
3" = 1'-0"

GENERAL NOTES

- 1) ALL CONTRACTOR SHALL FIELD VERIFY ALL DIMENSIONS AND LOCATIONS PRIOR TO THE START OF THE WORK.
- 2) ALL EXISTING WALLS ARE CMU, UNLESS SPECIFICALLY NOTED TO BE ANOTHER MATERIAL.

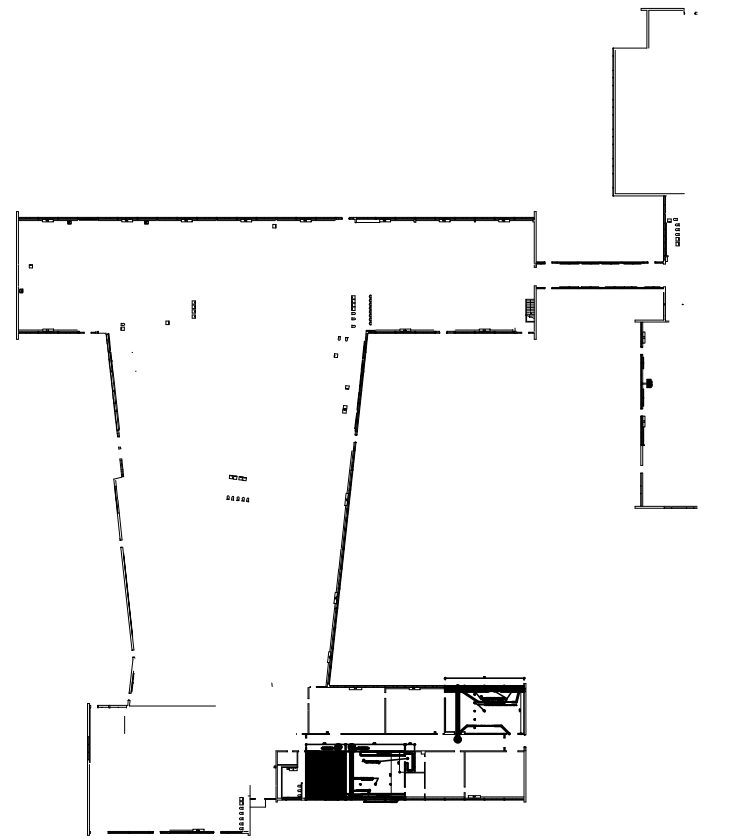
MECHANICAL SCOPE AT EXISTING UNIT VENTILATORS TO BE REMOVED & REINSTALLED:

SHUT OFF THE BALL VALVE AND CIRCUIT SETTER ON THE FWS & R PIPING SERVING THE UNIT VENTILATORS. DRAIN THE UNIT VENTILATOR COIL AND THE ASSOCIATED PIPING. DISCONNECT THE PIPING TO THE UNIT VENTILATOR COIL AT THE PIPE UNIONS. DISCONNECT, REMOVE, AND SALVAGE THE UNIT VENTILATOR. ALSO, DISCONNECT AND WIRING AND CONTROLS. PROVIDE A PIPING LOOP OFF OF THE PIPE UNIONS TO ENSURE FLOW AND NO LEAKS IN CASE THE BALL VALVE OR CIRCUIT SETTER DO NOT HOLD. DISCONNECT AND REMOVE ANY ABANDONED FINITUBE RADIATION ON THE EXISTING WALL. CAP PIPING AND MAKE SAFE.

ONCE THE FLOORING IS INSTALLED:

- 1) REMOVE THE TEMPORARY PIPING LOOP BETWEEN THE PIPE UNIONS.
- 2) REINSTALL THE UNIT VENTILATOR AND RECONNECT TO THE EXISTING PIPING.
- 3) REFILL THE UNIT FROM THE SYSTEM AND PURGE ANY AIR IN THE LINES. SET THE CIRCUIT SETTER TO THE PRE-CONSTRUCTION SETTING.
- 4) RECONNECT TO THE POWER AND CONTROL WIRING.
- 5) TEST THE UNIT VENTILATOR TO MAKE SURE IT WORKS PROPERLY.

BUILDING KEY PLAN



DRAWING TITLE

NEW ELEVATIONS, PLANS
AND DETAILS
ROOM 122B

JOB NUMBER: NAULT #1676
JOB TITLE

CLASSROOM RENOVATIONS
AT THE
CHANDLER MAGNET ELEM. SCHOOL
WORCESTER PUBLIC SCHOOLS

CONSULTANT

ARCHITECT

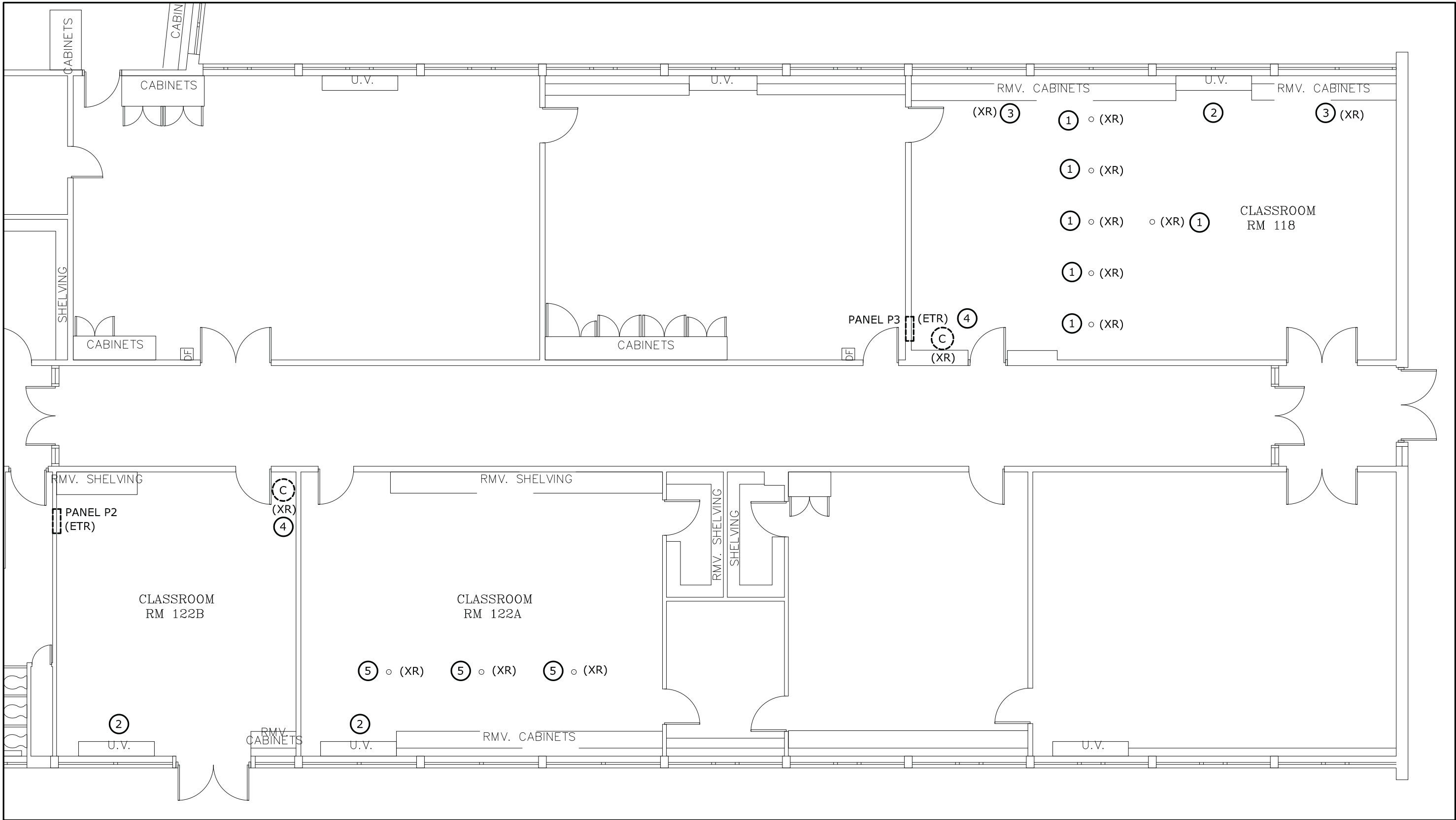
NAULT ARCHITECTS, INC.
100 HOPE AVENUE
WORCESTER, MA 01603
TEL: (508) 755-6134
FAX: (508) 754-4881

DRAWING NO.

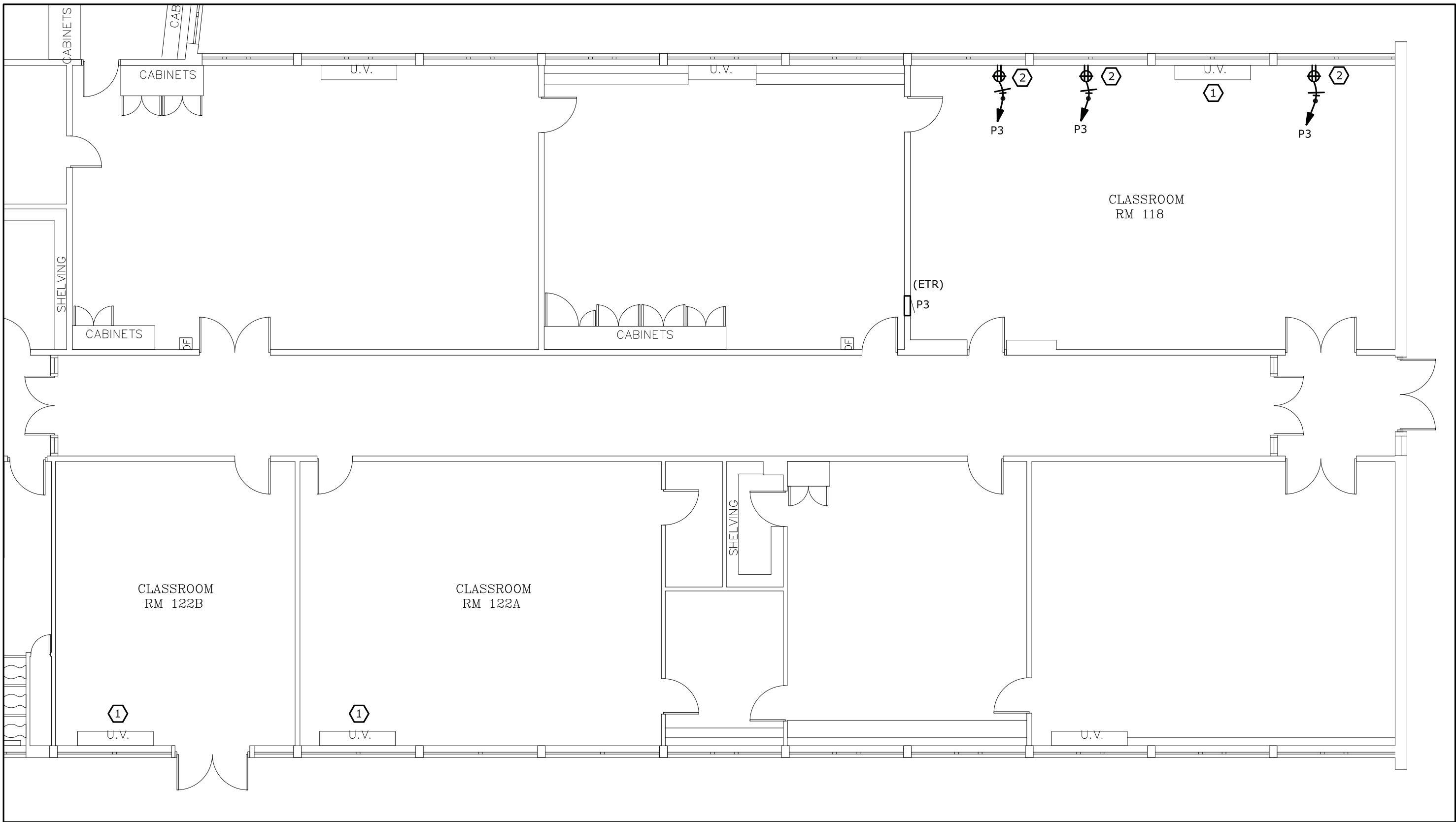
A4

SCALE
AS NOTED

DATE
MAY, 31 2023



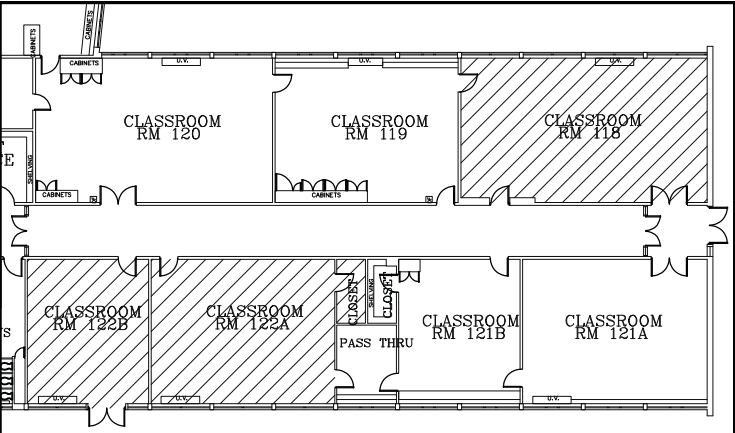
1 Electrical - Demolition Plan
1/8" = 1'-0"

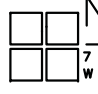


2 Electrical - Proposed Plan
1/8" = 1'-0"

GENERAL NOTES: 1) THE CONTRACTOR SHALL FIELD VERIFY ALL DIMENSIONS AND LOCATIONS PRIOR TO THE START OF THE PROJECT.	
KEYED NOTES FOR ELECTRICAL DEMOLITION PLAN	
1	TRACE CIRCUITS FEEDING THE EXISTING FLOOR BOXES, AND LOCKOUT/TAGOUT. REMOVE ABANDONED CIRCUIT CONDUCTORS FROM EACH FLOOR BOX TO PANEL P3. REVISE PANEL CIRCUIT DIRECTORY TO INDICATE CIRCUIT BREAKERS ARE NOW SPARE. FLUSH FLOOR BOXES ARE TO REMAIN AND BE COVERED BY FLOOR IN-FILL. TYPICAL FOR SIX (6).
2	TRACE CIRCUIT FEEDING THE EXISTING UNIT VENTILATOR, AND LOCKOUT/TAGOUT. DISCONNECT ELECTRICAL POWER TO EXISTING UNIT VENTILATOR. MAINTAIN CIRCUITRY TO RECONNECT AFTER NEW FLOOR IS COMPLETED.
3	TRACE CIRCUITS FEEDING THE EXISTING CABINET SURFACE WIREMOLD, AND LOCKOUT/TAGOUT. DISCONNECT AND REMOVE EXISTING SURFACE WIREMOLD AND RECEPTACLES, AND BRANCH CIRCUIT CONDUIT AND WIRING FROM THE FACE OF EXISTING CABINETS. REVISE PANEL CIRCUIT DIRECTORY TO INDICATE CIRCUIT BREAKERS ARE NOW SPARE.
4	TRACE THE CIRCUIT FEEDING THE EXISTING SURFACE WALL CLOCK AND LOCKOUT/TAGOUT. DISCONNECT AND REMOVE THE EXISTING SURFACE WALL CLOCK. MARK THE CIRCUIT NUMBER ON THE CONDUCTORS. PROVIDE WIRE NUTS ON DISCONNECTED CIRCUIT CONDUCTORS. PROVIDE A BLANK SURFACE WALL PLATE ON THE EXISTING OUTLET BOX.
5	TRACE CIRCUITS FEEDING THE EXISTING FLOOR BOXES, AND LOCKOUT/TAGOUT. REMOVE ABANDONED CIRCUIT CONDUCTORS FROM EACH FLOOR BOX TO PANEL P2. REVISE PANEL CIRCUIT DIRECTORY TO INDICATE CIRCUIT BREAKERS ARE NOW SPARE. IF FLOOR BOX COVERS CANNOT BE OPENED, DISCONNECT BRANCH CIRCUIT CONDUCTORS AND CUT AT CONDUIT ENTRANCE INTO PANEL. FLUSH FLOOR BOXES ARE TO REMAIN AND BE COVERED BY FLOOR IN-FILL. TYPICAL FOR THREE (3).
KEYED NOTES FOR ELECTRICAL PROPOSED PLAN	
1	RECONNECT REINSTALLED UNIT VENTILATOR FROM DISCONNECTED MAINTAINED CIRCUIT. REMOVE LOCKOUT/TAGOUT AND CLOSE CIRCUIT BREAKER WHEN INSTRUCTED BY HVAC INSTALLER.
2	PROVIDE SURFACE OUTLET BELL BOXES AND QUAD RECEPTACLES WITH A TWO-GANG STAINLESS PLATE AND 3/4" CONDUIT WITH THREE (3) #12 THHN AWG COPPER CONDUCTORS TO EXISTING PANEL P3 AS A DEDICATED CIRCUIT. CONNECT NEW CIRCUITS TO 20A 1-POLE CIRCUIT BREAKERS THAT BECAME SPARE DUE TO THE REMOVAL OF THE FLOOR BOX OUTLETS. REVISE CIRCUIT PANEL DIRECTORY TO REFLECT NEW DEDICATED OUTLETS. TYPICAL FOR THREE (3) LOCATIONS.

BUILDING KEY PLAN



DRAWING TITLE ELECTRICAL FLOOR PLANS	
JOB NUMBER: NAULT #1676 JOB TITLE CLASSROOM RENOVATIONS AT THE CHANDLER MAGNET SCHOOL WORCESTER PUBLIC SCHOOLS	
CONSULTANT	
ARCHITECT  NAULT ARCHITECTS, INC. 21 HOPE AVENUE WORCESTER, MA 01603 TEL: (508) 755-8134 FAX: (508) 754-4881	
	DRAWING NO. E1.0
SCALE AS NOTED	DATE MAY 31, 2023