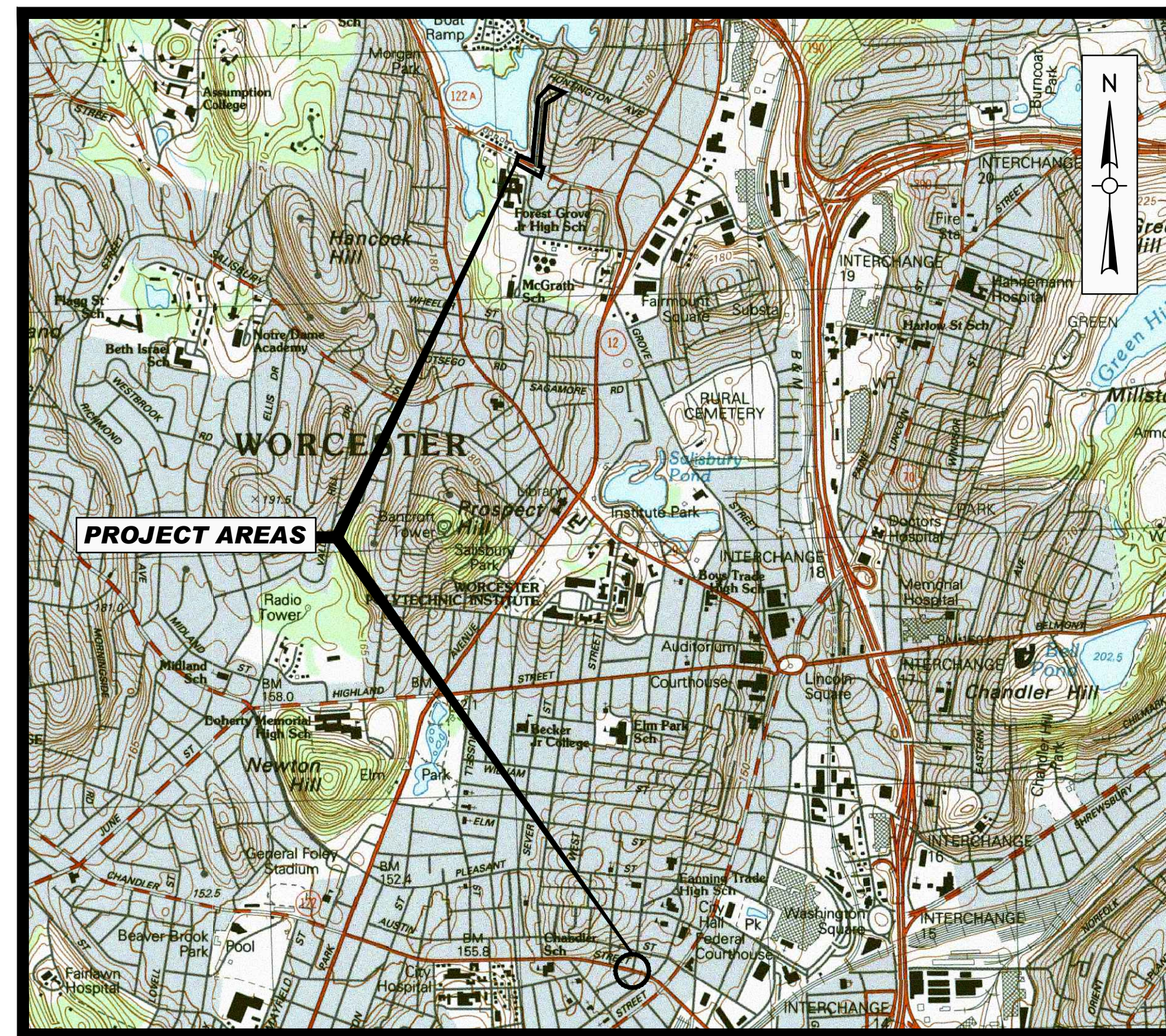


# CITY OF WORCESTER, MASSACHUSETTS

## DEPARTMENT OF PUBLIC WORKS

### INDIAN LAKE PARKWAY TWIN MANHOLE SEPARATIONS



LOCUS MAP  
SCALE : 1"=1,500'

DRAWING INDEX	
SHEET	TITLE
G000	COVER AND DRAWING INDEX
G001	ABBREVIATIONS, NOTES, AND LEGEND
BASE BID	
C101	GROVE STREET SEWER AND DRAIN STA 0+00 TO STA 4+38
C102	INDIAN LAKE PARKWAY (EAST) STA 0+00 TO STA 4+60
C103	INDIAN LAKE PARKWAY (EAST) STA 4+60 TO STA 8+70
C104	INDIAN LAKE PARKWAY (EAST) STA 8+70 TO STA 11+45
C105	INDIAN LAKE PARKWAY (WEST) STA 0+00 TO STA 5+20
C106	INDIAN LAKE PARKWAY (WEST) STA 5+20 TO STA 9+75
C107	CHANDLER STREET AT IRVING STREET SEWER REPLACEMENT
C501	CONSTRUCTION DETAILS SHEET 1 OF 2
C502	CONSTRUCTION DETAILS SHEET 2 OF 2
C503	WORCESTER STANDARD CONSTRUCTION DETAILS SHEET 1 OF 2
C504	WORCESTER STANDARD CONSTRUCTION DETAILS SHEET 2 OF 2
C505	CONSTRUCTION ZONE SAFETY PLAN

Seal:

**CONTRACT NO. S26-1**  
**BID # 8725-M6**



**Weston & Sampson**  
Weston & Sampson Engineers, Inc.  
427 Main Street, Suite 400  
Worcester, MA 01608  
978.532.1900 800.SAMPSON  
www.westonandsampson.com

Issued Date:

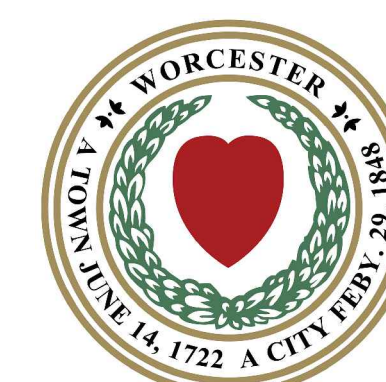
**JUNE 2026**



Know what's below.  
Call before you dig.

Issued For:

**RELEASED FOR CONSTRUCTION**



**ERIC D. BATISTA, CITY MANAGER**  
**JOHN K. WESTERLING, COMMISSIONER OF PUBLIC WORKS**



Consultants:

No.	Date	Description

Revisions:

No.	Date	Description

COA:

Seal:



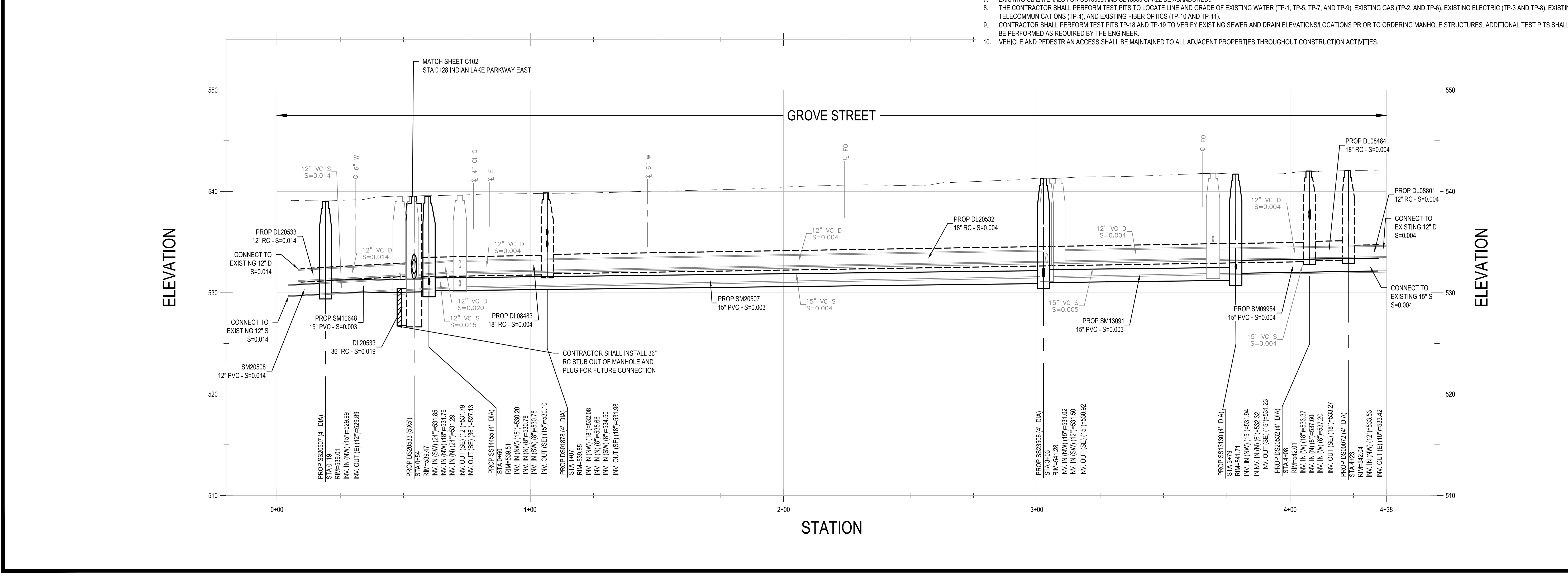
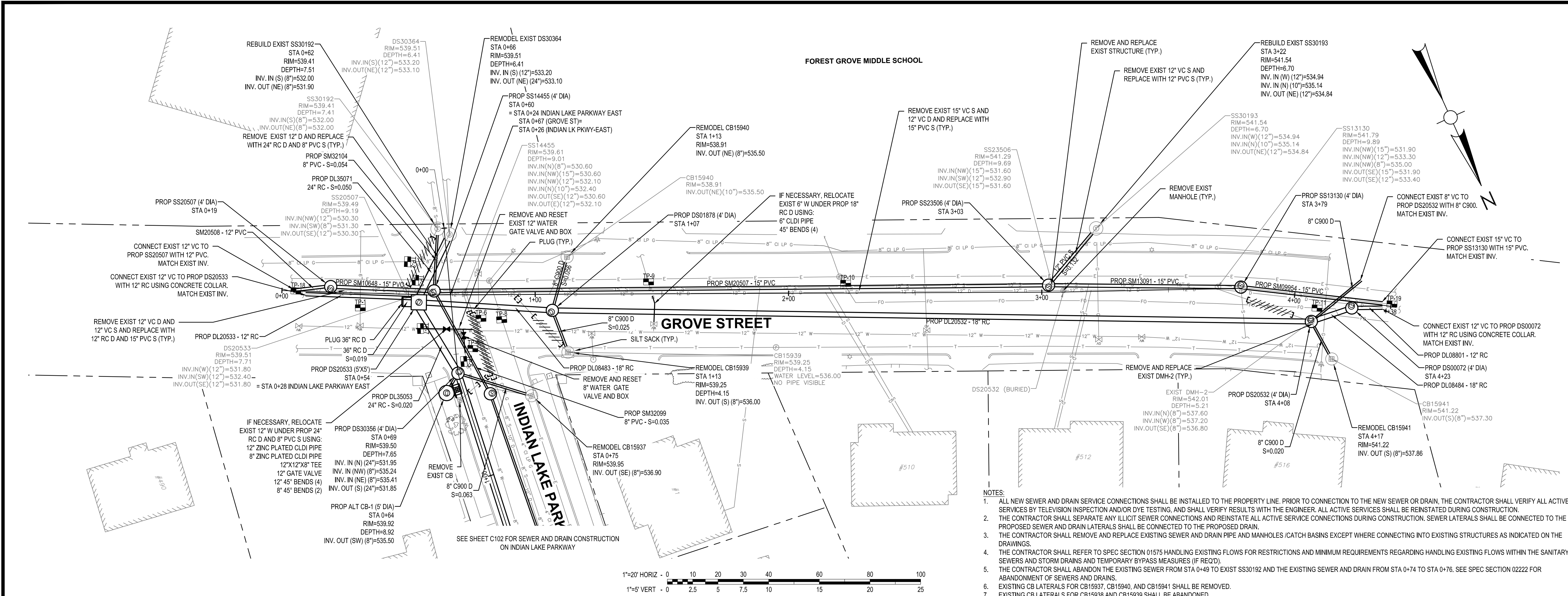
Issued For:  
**RELEASED FOR CONSTRUCTION**

Scale: NOTED

Date: JUNE 2026  
 Drawn By: MHH  
 Reviewed By: KDK  
 Approved By: FEO  
 W&S Project No.: ENG24-0569  
 W&S File No.: SEE PATH

Drawing Title:  
**GROVE STREET SEWER AND DRAIN STA 0+00 TO STA 4+38**

Sheet Number:  
**C101**











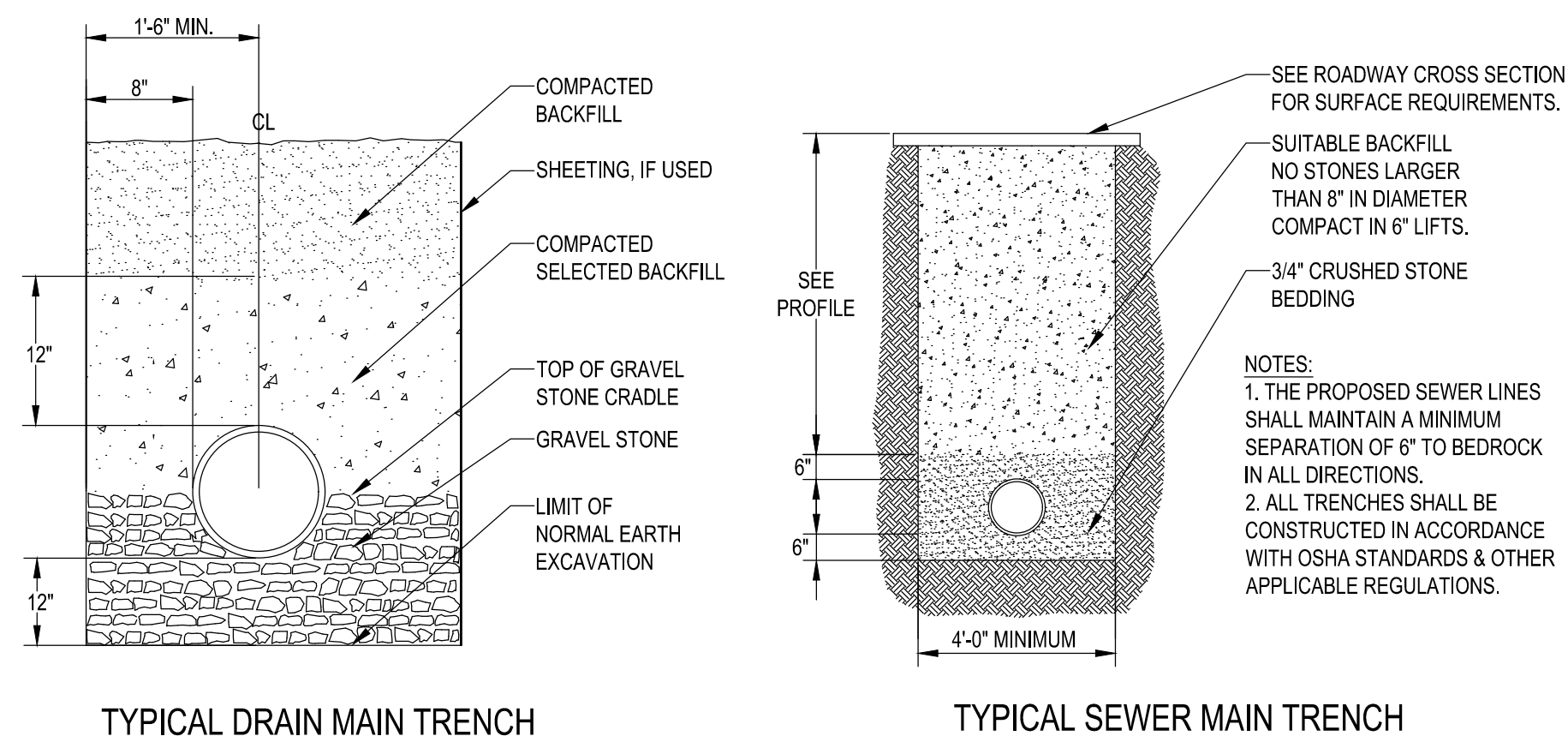




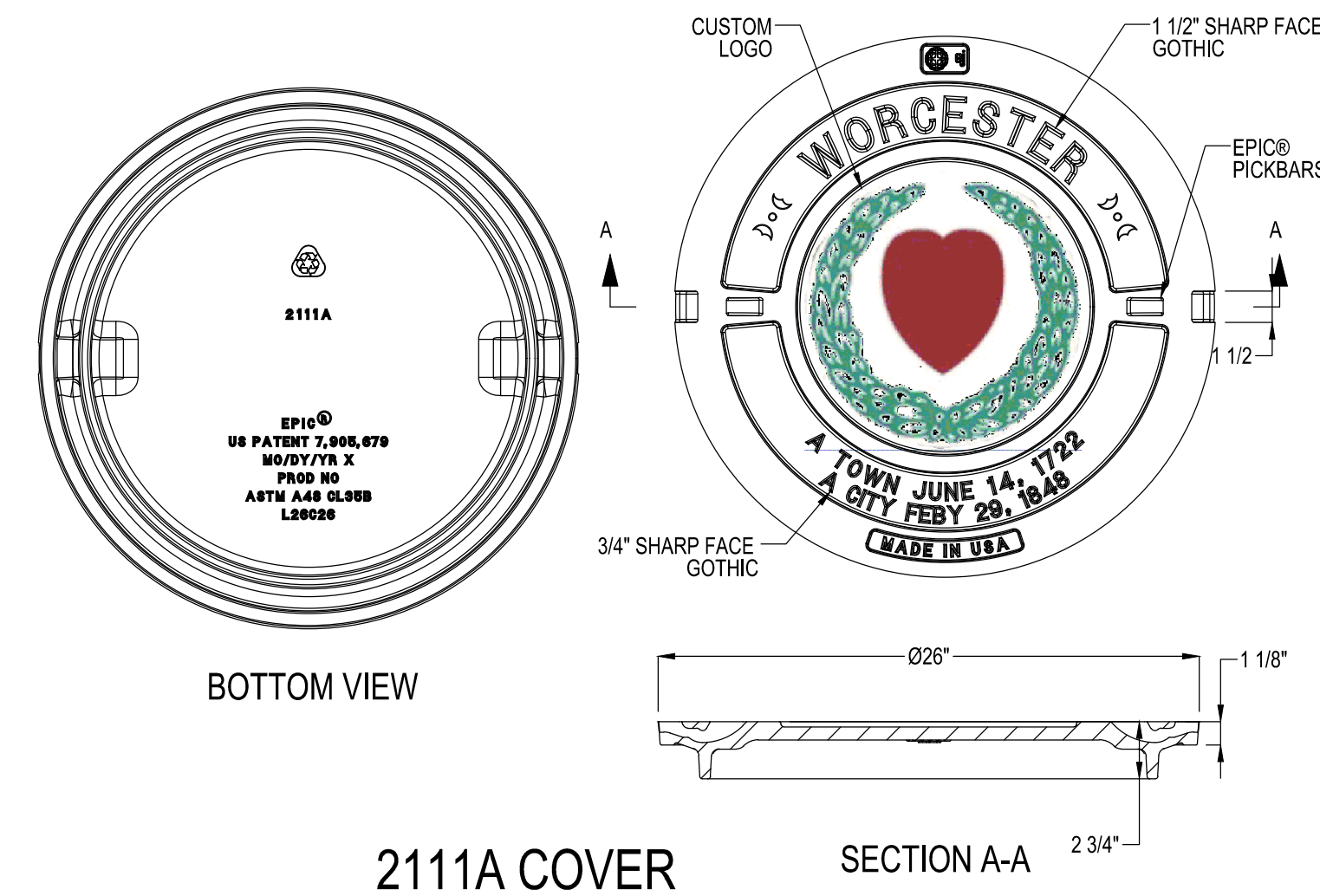




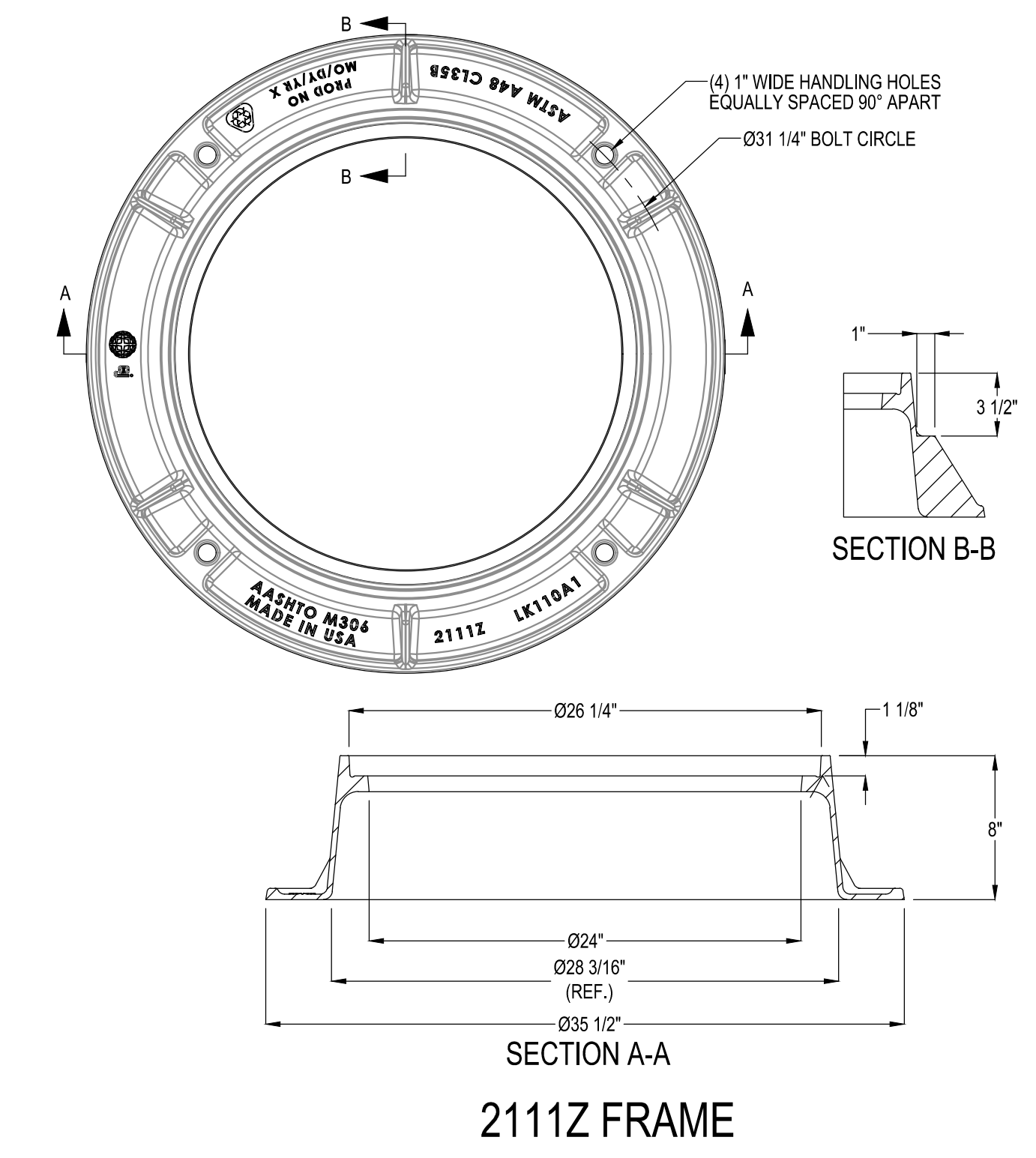




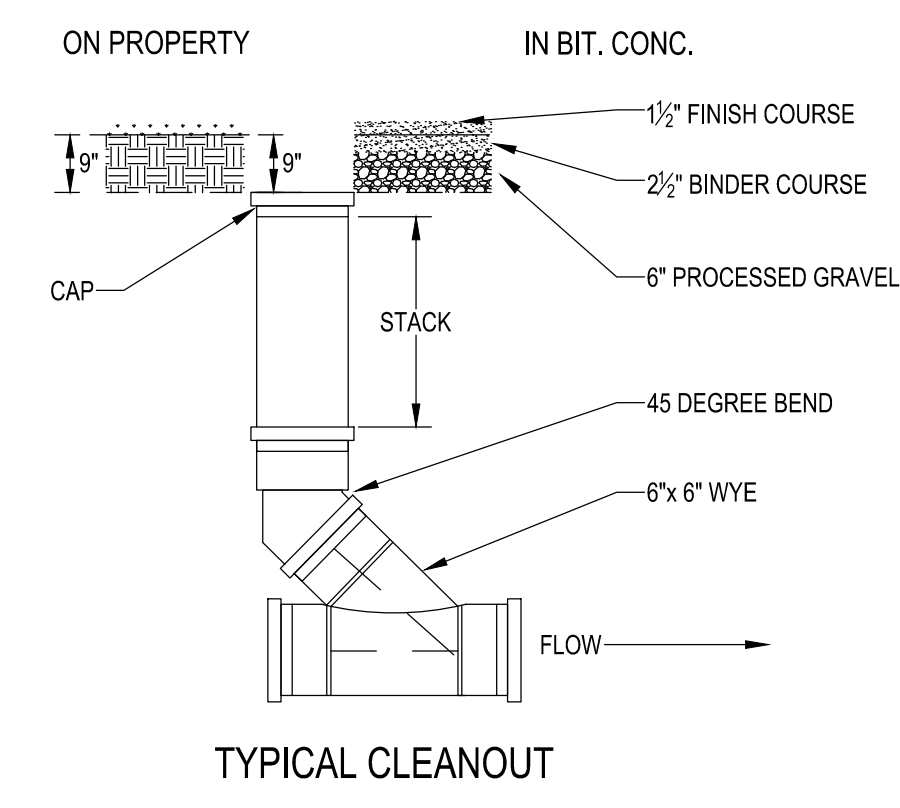
TYPICAL TRENCH DETAILS



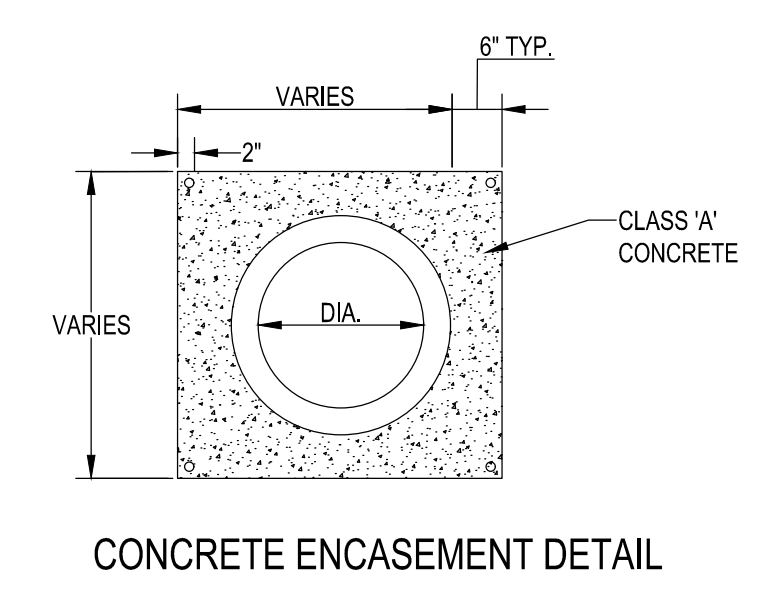
2111A COVER



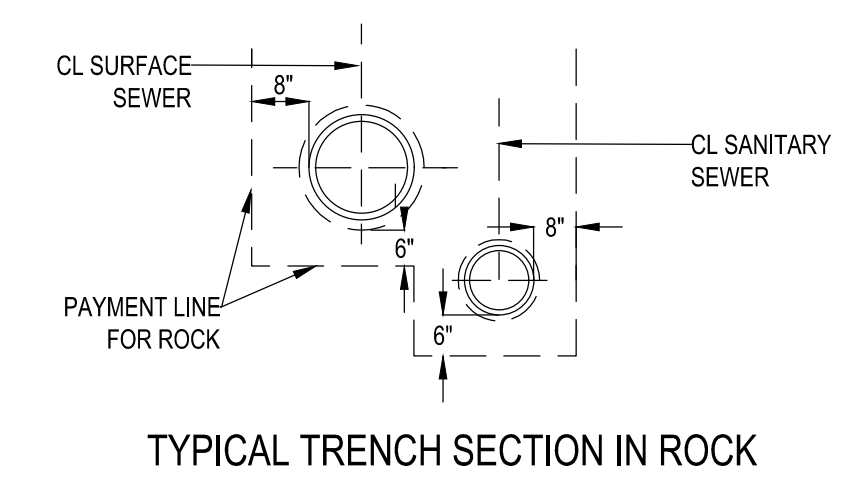
2111Z FRAME



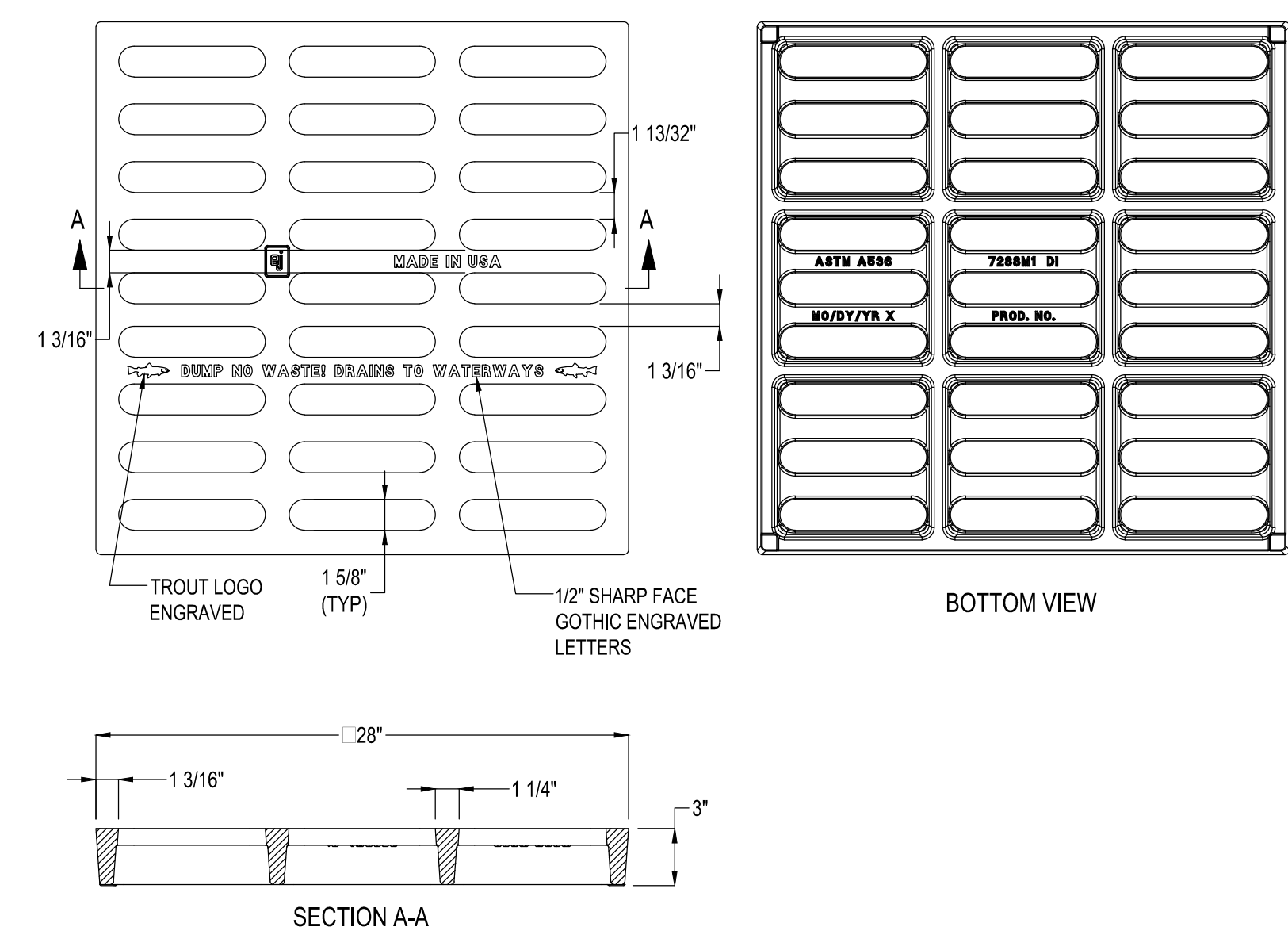
TYPICAL CLEANOUT



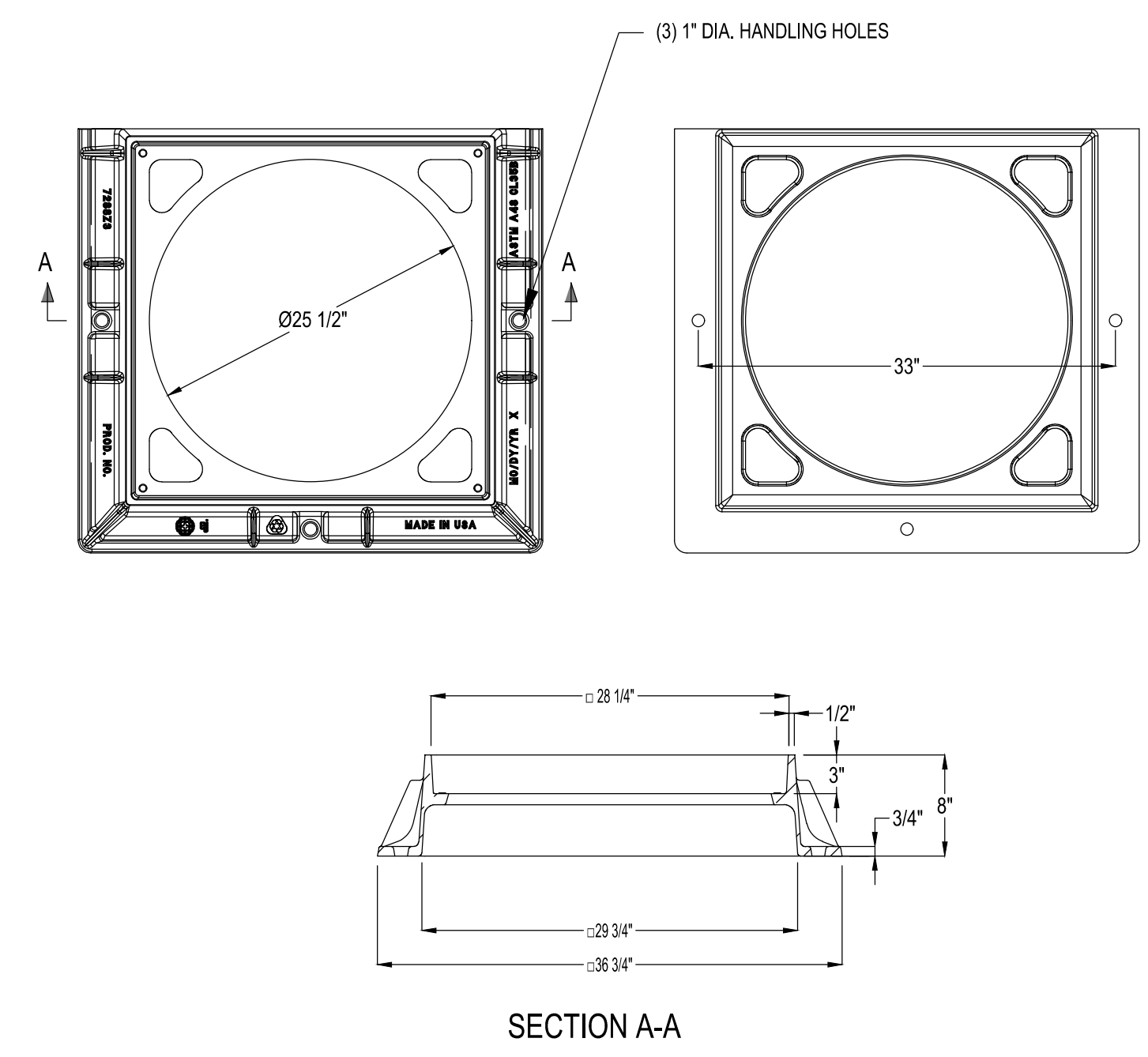
CONCRETE ENCASEMENT DETAIL



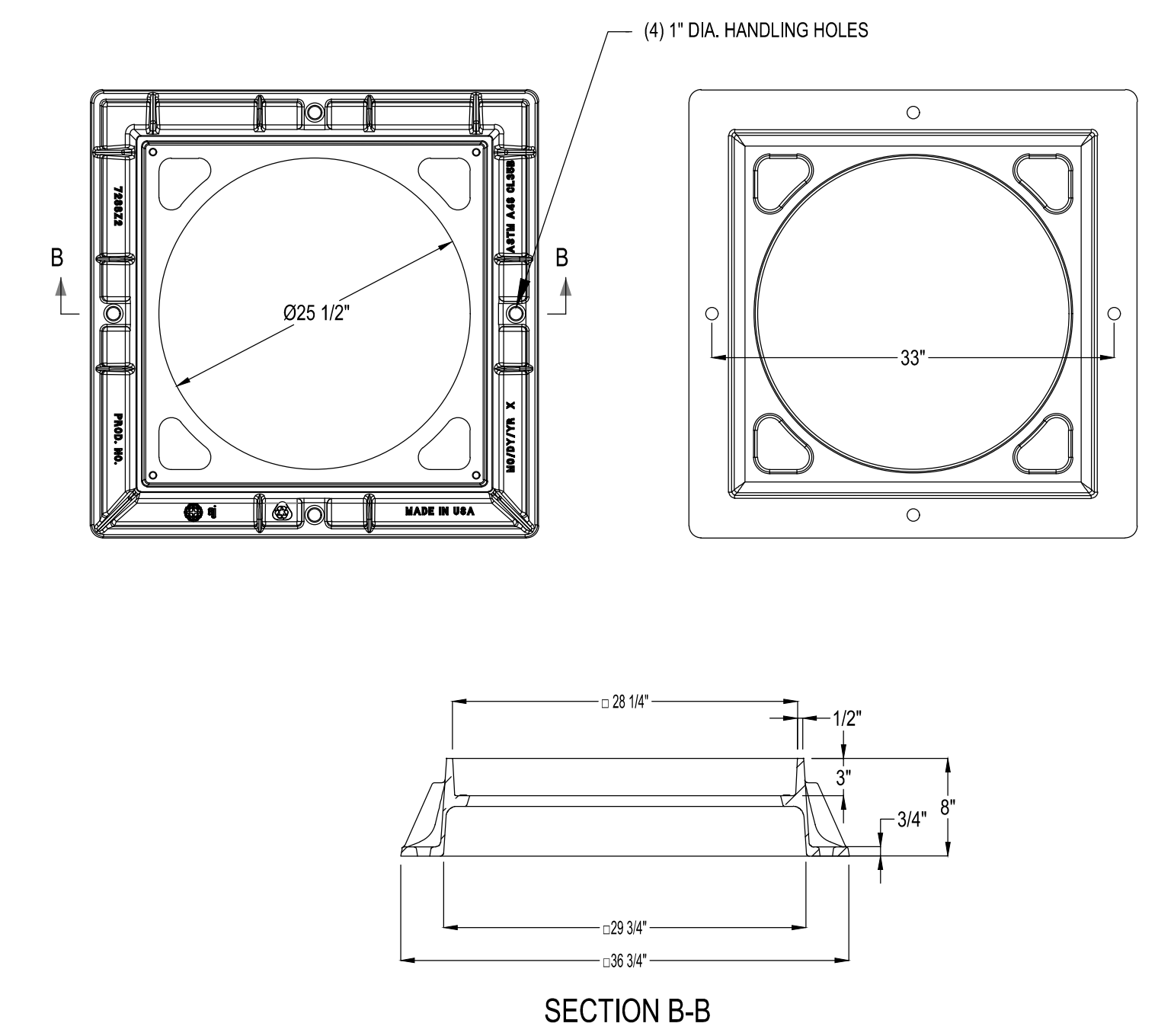
TYPICAL TRENCH SECTION IN ROCK



CATCH BASIN GRATE (EJ 7288M1)



CATCH BASIN GRATE EJ 7288Z3 (3 FLANGE), EJ 7288Z2 (4 FLANGE), OR EQUAL



SECTION B-B

Project:  
CITY OF WORCESTER,  
MASSACHUSETTS  
DEPARTMENT OF PUBLIC WORKS

INDIAN LAKE PARKWAY TWIN  
MANHOLE SEPARATIONS  
CONTRACT S26-1

Weston & Sampson  
Weston & Sampson Engineers, Inc.  
427 Main Street, Suite 400  
Worcester, MA 01608  
978.532.1900 800.SAMPSON  
www.westonandsampson.com

Consultants:

Revisions:

No.	Date	Description

COA:

Seal:

Issued For:  
**RELEASED FOR CONSTRUCTION**

Scale: NONE

Date: JUNE 2026  
Drawn By: NN  
Reviewed By: KDK  
Approved By: FEO  
W&S Project No.: ENG24 - 0569  
W&S File No.: SEE PATH

Drawing Title:  
**WORCESTER STANDARD CONSTRUCTION DETAILS SHEET 2 OF 2**

Sheet Number:  
**C504**

