

CITY OF WORCESTER  
DEPARTMENT OF TRANSPORTATION AND MOBILITY

# PLAN OF 2025 SPEED HUMP INSTALLATION



## DRAWING INDEX

COVER SHEET	1
LEGEND AND GENERAL NOTES	2
CONSTRUCTION PLANS	3-12
STANDARD DETAILS	13



**TITLE:**

# COVER SHEET

DRAWN BY: PSC/SWG

SCALE: (H) AS SHOWN

SCALE: (V) AS SHOWN

DATE: JUNE 6, 2025

**SHEET 1 OF 13**

[illegible]



TRAFFIC SYMBOLS

EXISTING	PROPOSED	DESCRIPTION
		CONTROLLER PHASE ACTUATED
		TRAFFIC SIGNAL HEAD (SIZE AS NOTED)
		WIRE LOOP DETECTOR (6' x 6' TYP UNLESS OTHERWISE SPECIFIED)
		VIDEO DETECTION CAMERA
		MICROWAVE DETECTOR
		PEDESTRIAN PUSH BUTTON, SIGN (DIRECTIONAL ARROW AS SHOWN) AND SADDLE
		EMERGENCY PREEMPTION CONFIRMATION STROBE LIGHT
		VEHICULAR SIGNAL HEAD
		VEHICULAR SIGNAL HEAD, OPTICALLY PROGRAMMED
		FLASHING BEACON
		PEDESTRIAN SIGNAL HEAD, (TYPE AS NOTED OR AS SPECIFIED)
		RAILROAD SIGNAL
		SIGNAL POST AND BASE (ALPHA-NUMERIC DESIGNATION NOTED)
		MAST ARM, SHAFT AND BASE (ARM LENGTH AS NOTED)
		HIGH MAST POLE OR TOWER
		SIGN AND POST
		SIGN AND POST (2 POSTS)
		MAST ARM WITH LUMINAIRE
		OPTICAL PRE-EMPTION DETECTOR
		CONTROL CABINET, GROUND MOUNTED
		CONTROL CABINET, POLE MOUNTED
		FLASHING BEACON CONTROL AND METER PEDESTAL
		LOAD CENTER ASSEMBLY
		PULL BOX 12"x12" (OR AS NOTED)
		ELECTRIC HANDHOLE 12"x24" (OR AS NOTED)
		TRAFFIC SIGNAL CONDUIT

PAVEMENT MARKINGS SYMBOLS

EXISTING	PROPOSED	DESCRIPTION
		PAVEMENT ARROW - WHITE
		LEGEND "ONLY" - WHITE
		STOP LINE
		CROSSWALK
		SOLID WHITE LINE
		SOLID YELLOW LINE
		BROKEN WHITE LINE
		BROKEN YELLOW LINE
		DOTTED WHITE LINE
		DOTTED YELLOW LINE
		DOTTED WHITE LINE EXTENSION
		DOTTED YELLOW LINE EXTENSION
		DOUBLE WHITE LINE
		DOUBLE YELLOW LINE

GENERAL NOTES

- THE LOCATIONS EXISTING UNDERGROUND UTILITIES ARE SHOWN AS AN APPROXIMATE REPRESENTATION ONLY. THE OWNER OR ITS REPRESENTATIVE(S) HAVE NOT INDEPENDENTLY VERIFIED THIS INFORMATION AS SHOWN ON THE PLANS. THE UTILITY INFORMATION SHOWN DOES NOT GUARANTEE THE ACTUAL EXISTENCE, SERVICEABILITY, OR OTHER DATA CONCERNING THE UTILITIES, NOR DOES IT GUARANTEE AGAINST THE POSSIBILITY THAT ADDITIONAL UTILITIES MAY BE PRESENT THAT ARE NOT SHOWN ON THE PLANS. PRIOR TO ORDERING MATERIALS AND BEGINNING CONSTRUCTION THE CONTRACTOR SHALL VERIFY AND DETERMINE THE EXACT LOCATION, SIZE, AND ELEVATION OF EXISTING UTILITIES.
- THE CONTRACTOR MUST FIELD VERIFY THE PROPOSED INTERFACE POINTS (CROSSINGS) WITH EXISTING UNDERGROUND UTILITIES BY USING TEST PITS TO CONFIRM EXACT DEPTH, PRIOR TO COMMENCEMENT OF CONSTRUCTION.
- WHERE AN EXISTING UTILITY IS FOUND TO CONFLICT WITH THE PROPOSED WORK, OR EXISTING CONDITIONS DIFFER FROM THOSE SHOWN SUCH THAT THE WORK CANNOT BE COMPLETED AS INTENDED, THE LOCATION, ELEVATION, AND SIZE OF THE UTILITY SHALL BE ACCURATELY DETERMINED WITHOUT DELAY BY THE CONTRACTOR, AND THE INFORMATION FURNISHED IN WRITING TO THE OWNER'S REPRESENTATIVE FOR THE RESOLUTION OF THE CONFLICT. FAILURE TO PROVIDE OR PERFORM THE ABOVE PRIOR TO PERFORMING ANY WORK SHALL NOT BE GROUNDS FOR EXTRA PAYMENTS TO THE CONTRACTOR.
- AT ALL LOCATIONS WHERE EXISTING CURBING OR PAVEMENT ABUTS NEW CONSTRUCTION, THE EDGE OF THE EXISTING CURB OR PAVEMENT SHALL BE SAW CUT TO A CLEAN, SMOOTH EDGE. BLEND NEW PAVEMENT, CURBS, AND EARTHWORK SMOOTHLY INTO EXISTING BY MATCHING LINES, GRADES, AND JOINTS.
- THE CONTRACTOR SHALL MAKE ALL ARRANGEMENTS FOR THE ALTERATION AND ADJUSTMENT OF GAS, ELECTRIC, TELEPHONE AND ANY OTHER PRIVATE UTILITIES BY THE UTILITY COMPANIES, AS REQUIRED.
- UTILITY COVERS, GRATES, ETC. SHALL BE ADJUSTED TO BE FLUSH WITH THE PAVEMENT FINISH GRADE UNLESS OTHERWISE NOTED.
- INSTALL ALL UTILITIES (INCLUDING CONCRETE PADS) PER UTILITY COMPANY, DPW, AND STATE STANDARDS.
- ALL FILL, COMPACTION, AND BACKFILL MATERIALS MUST COMPLY WITH APPLICABLE REQUIREMENTS AND SPECIFICATIONS. THE PROFESSIONAL OF RECORD AND TEC ARE NOT RESPONSIBLE FOR DESIGN OF TRENCH BACKFILL OR FOR COMPACTION REQUIREMENTS.
- DURING THE INSTALLATION OF SANITARY, STORM, AND ALL UTILITIES, THE CONTRACTOR MUST MAINTAIN A CONTEMPORANEOUS AND THOROUGH RECORD OF CONSTRUCTION TO IDENTIFY THE AS-INSTALLED LOCATIONS OF ALL UNDERGROUND INFRASTRUCTURE. THE CONTRACTOR MUST CAREFULLY NOTE ANY INSTALLATIONS THAT DEVIATE, IN ANY RESPECT, FROM THE INFORMATION CONTAINED IN THESE PLANS. THIS RECORD MUST BE KEPT ON A CLEAN COPY OF THE APPROPRIATE PLAN(S), WHICH THE CONTRACTOR MUST PROMPTLY PROVIDE TO THE OWNER IMMEDIATELY UPON THE COMPLETION OF WORK.
- THE CONTRACTOR MUST ENSURE THAT ALL UTILITY TRENCHES LOCATED IN EXISTING PAVED ROADWAYS INCLUDING SANITARY, WATER AND STORM SYSTEMS, ARE REPAIRED IN ACCORDANCE WITH REFERENCED MUNICIPAL, COUNTY AND OR STATE DOT DETAILS AS APPLICABLE. THE CONTRACTOR MUST COORDINATE INSPECTION AND APPROVAL OF COMPLETED WORK WITH THE AUTHORIZED REPRESENTATIVE.
- ALL WORK ASSOCIATED WITH LIGHT POLES OR APPURTENANCES SHALL BE COORDINATED BY THE GENERAL CONTRACTOR WITH THE LOCAL UTILITY COMPANIES PRIOR TO THE ORDERING OF ANY MATERIALS. THIS MAY INCLUDE BUT IS NOT LIMITED TO THE REMOVAL, INSTALLATION, RELOCATION OR PROTECTION AS IT MAY BE REQUIRED TO ACCOMMODATE THE PROJECT.
- CONTRACTOR SHALL PROTECT ALL UNDERGROUND DRAINAGE, SEWER AND UTILITY FACILITIES FROM EXCESSIVE VEHICULAR LOADS DURING CONSTRUCTION. ANY DAMAGE TO THESE FACILITIES RESULTING FROM CONSTRUCTION LOADS WILL BE RESTORED TO ORIGINAL CONDITION (AT NO ADDITIONAL COST TO THE OWNER) BY THE CONTRACTOR.
- STORM AND SANITARY PIPE LENGTHS INDICATED ARE NOMINAL AND ARE MEASURED FROM CENTER OF STRUCTURE TO CENTER OF STRUCTURE UNLESS INDICATED ON THE PLANS OTHERWISE.
- EXCAVATION REQUIRED IN THE PROXIMITY OF EXISTING UTILITY LINES SHALL BE DONE BY HAND. CONTRACTOR SHALL REPAIR ANY DAMAGE TO EXISTING UTILITY LINES OR STRUCTURES INCURRED DURING CONSTRUCTION OPERATIONS AT NO COST TO THE OWNER.
- THE CONTRACTOR SHALL SCHEDULE THEIR WORK TO ALLOW THE FINISHED SUBGRADE ELEVATIONS TO DRAIN PROPERLY WITHOUT PUDDLING. SPECIFICALLY, ALLOW WATER TO ESCAPE WHERE PROPOSED CURB MAY RETAIN RUNOFF PRIOR TO APPLICATION OF THE FINISH SUBGRADE AND/OR SURFACE PAVING.

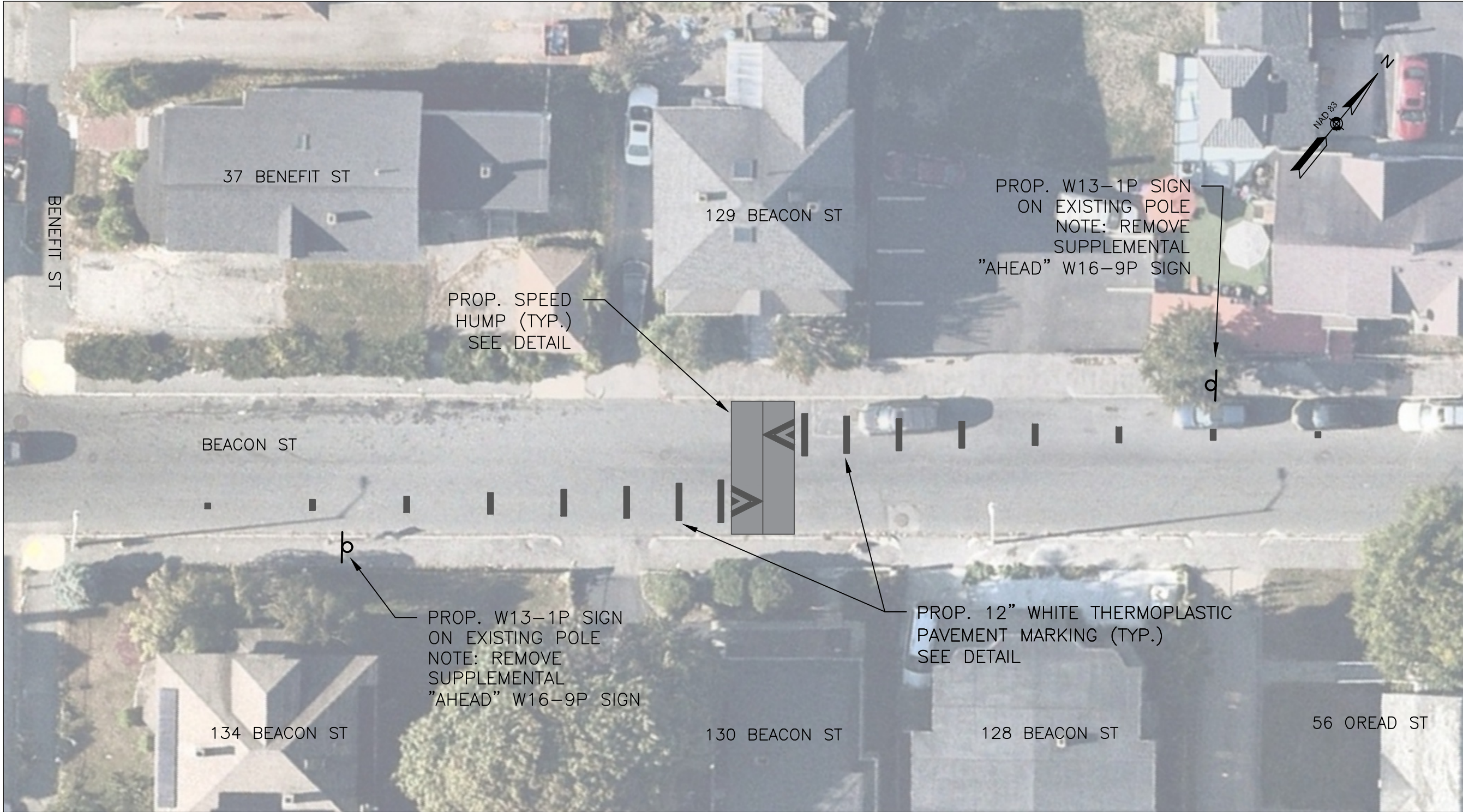
DEPARTMENT OF  
TRANSPORTATION AND MOBILITY  
76 East Worcester St, Worcester MA 01604



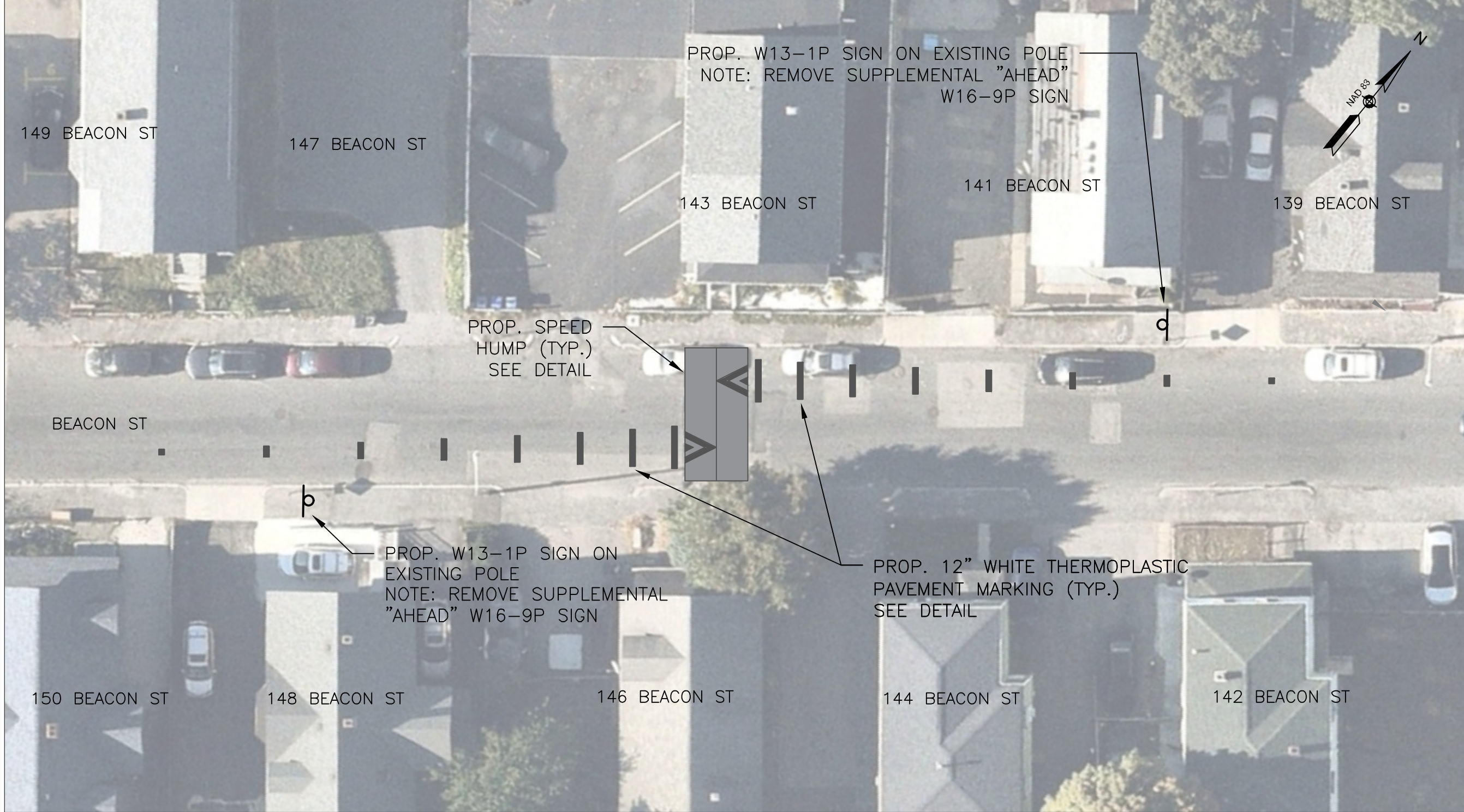
TITLE:  
**LEGEND AND  
GENERAL NOTES**

DRAWN BY:	PSC/SWG
SCALE: (H)	AS SHOWN
SCALE: (V)	AS SHOWN
DATE:	JUNE 6, 2025

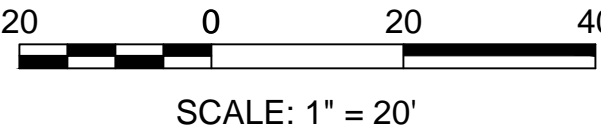




129 BEACON STREET




143 BEACON STREET



NO.	DATE	DESCRIPTION	BY

DEPARTMENT OF  
TRANSPORTATION AND MOBILITY  
76 East Worcester St, Worcester MA 01604



TITLE:  
**CONSTRUCTION  
PLANS**

DRAWN BY: PSC/SWG

SCALE: (H) AS SHOWN

SCALE: (V) AS SHOWN

DATE: JUNE 6, 2025

**SHEET 3 OF 13**



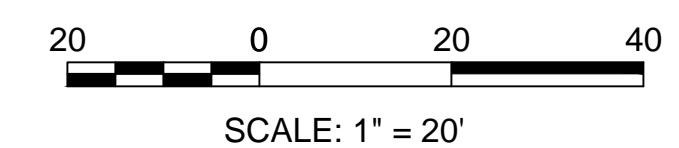
[illegible]

DRAWN BY:	PSC/SWG
SCALE: (H)	AS SHOWN
SCALE: (V)	AS SHOWN
DATE:	JUNE 6, 2025

20 0 20 40

SCALE: 1" = 20'



[illegible]

DEPARTMENT OF  
TRANSPORTATION AND MOBILITY  
76 East Worcester St., Worcester MA 01604

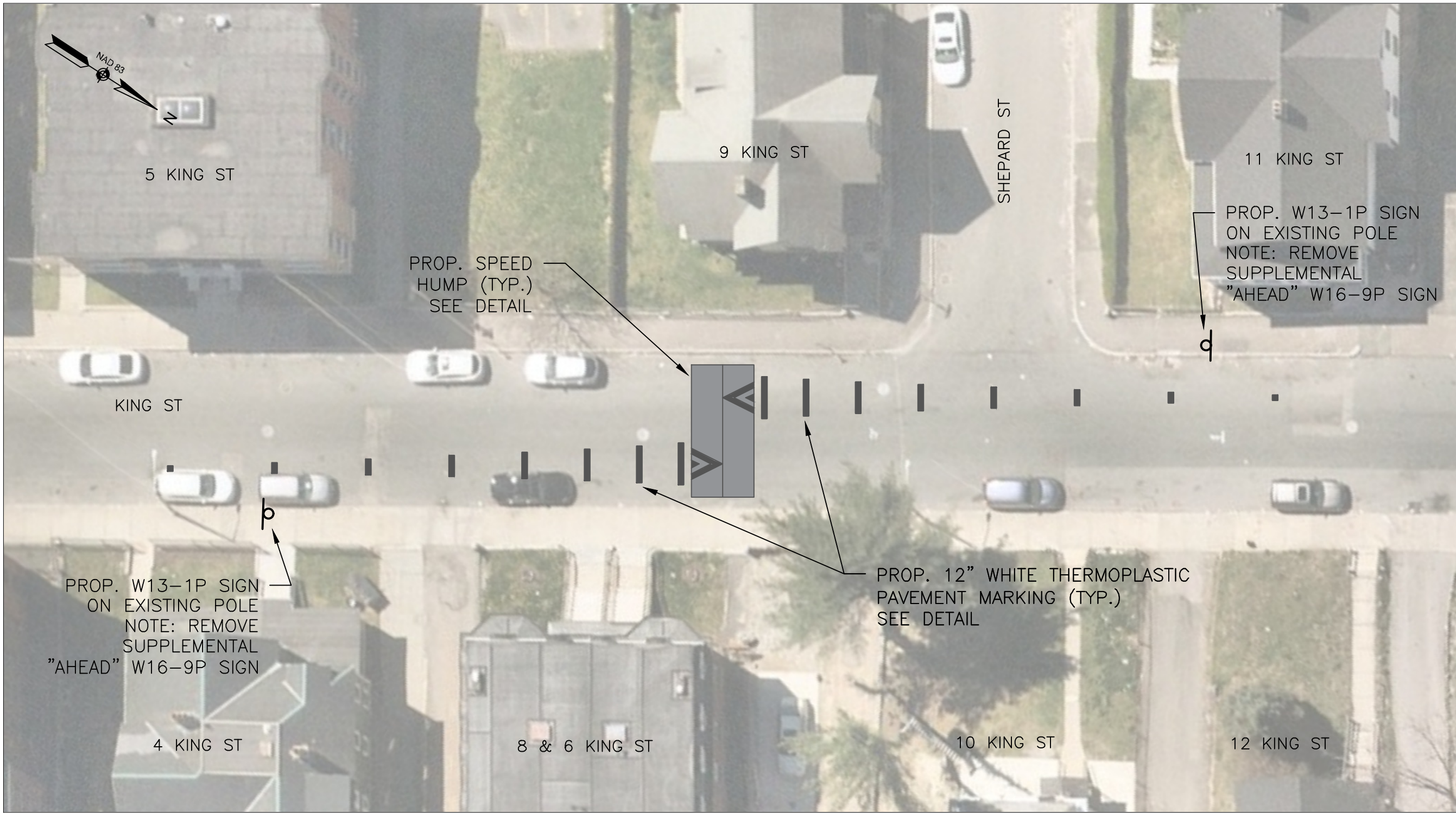


TITLE:  
**CONSTRUCTION  
PLANS**

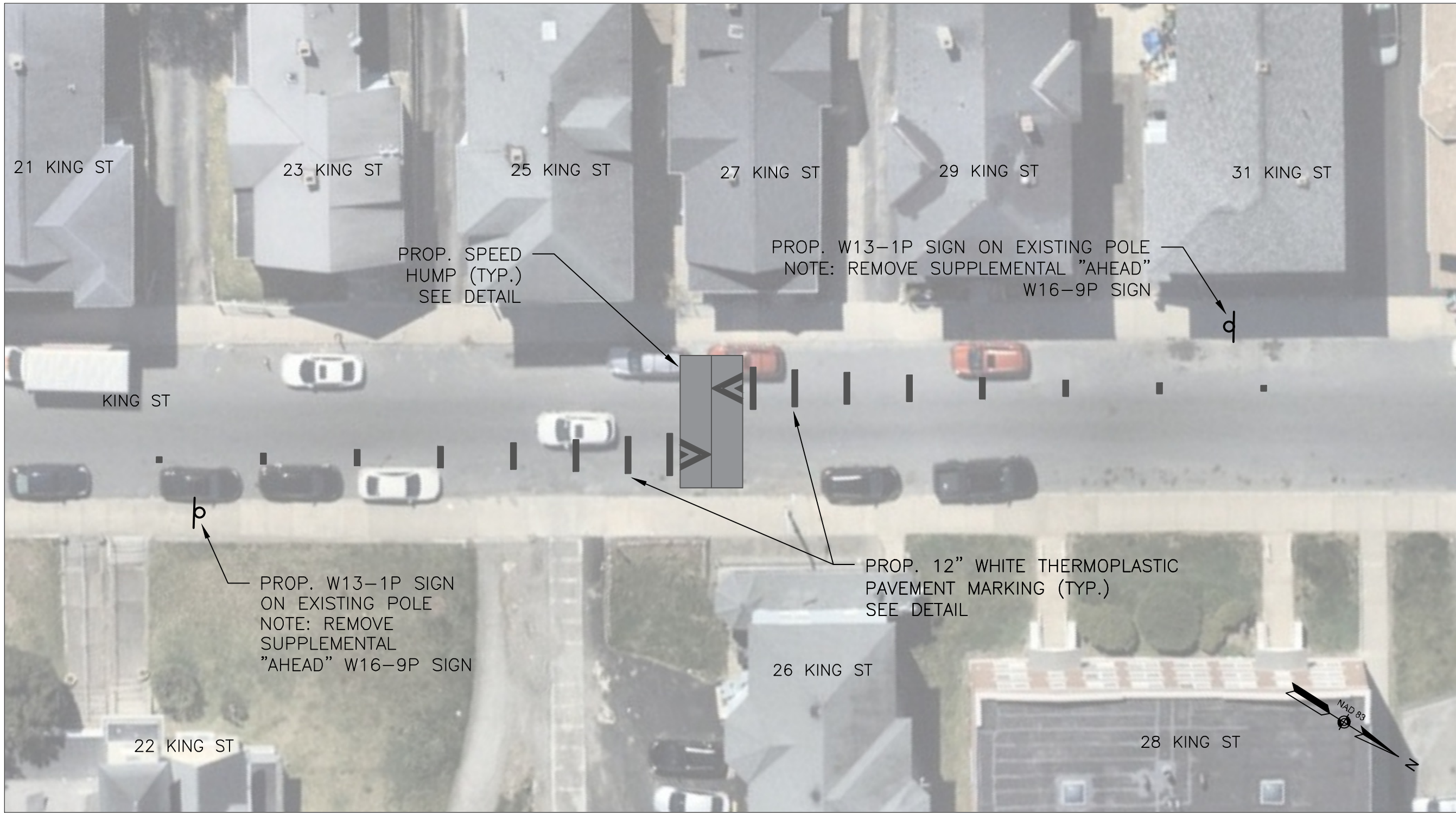
DRAWN BY:	PSC/SWG
SCALE: (H)	AS SHOWN
SCALE: (V)	AS SHOWN
DATE:	JUNE 6, 2025

**SHEET 5 OF 13**





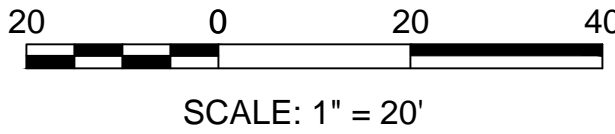
9 KING STREET



27 KING STREET



9 LAMAR AVENUE



DEPARTMENT OF TRANSPORTATION AND MOBILITY 76 East Worcester St, Worcester MA 01604					
					BY
					DESCRIPTION
					DATE
					NO.
<div><p>TITLE: <b>CONSTRUCTION PLANS</b></p><p>DRAWN BY: PSC/SWG</p><p>SCALE: (H) AS SHOWN</p><p>SCALE: (V) AS SHOWN</p><p>DATE: JUNE 6, 2025</p></div> <div><b>SHEET 6 OF 13</b></div>					

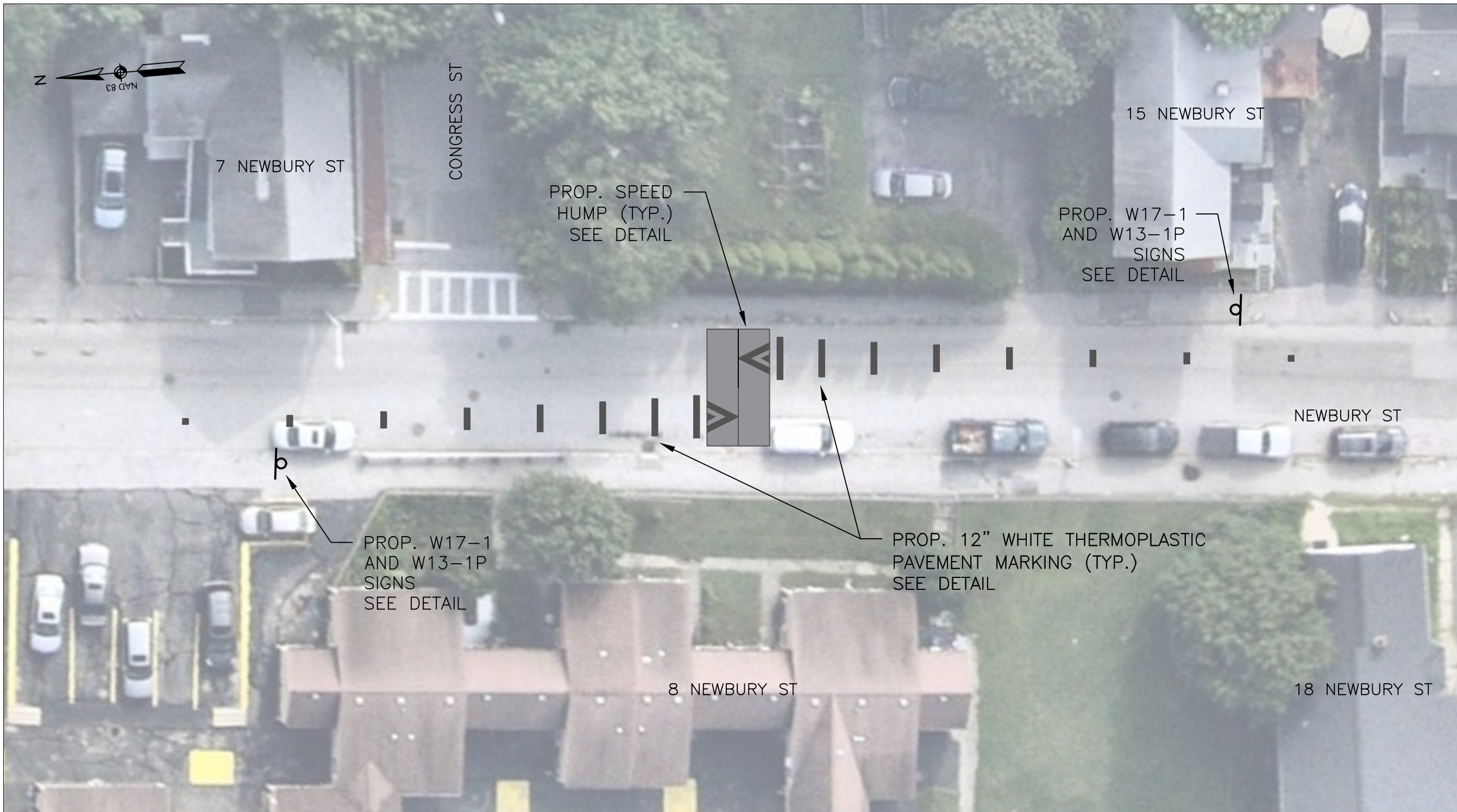




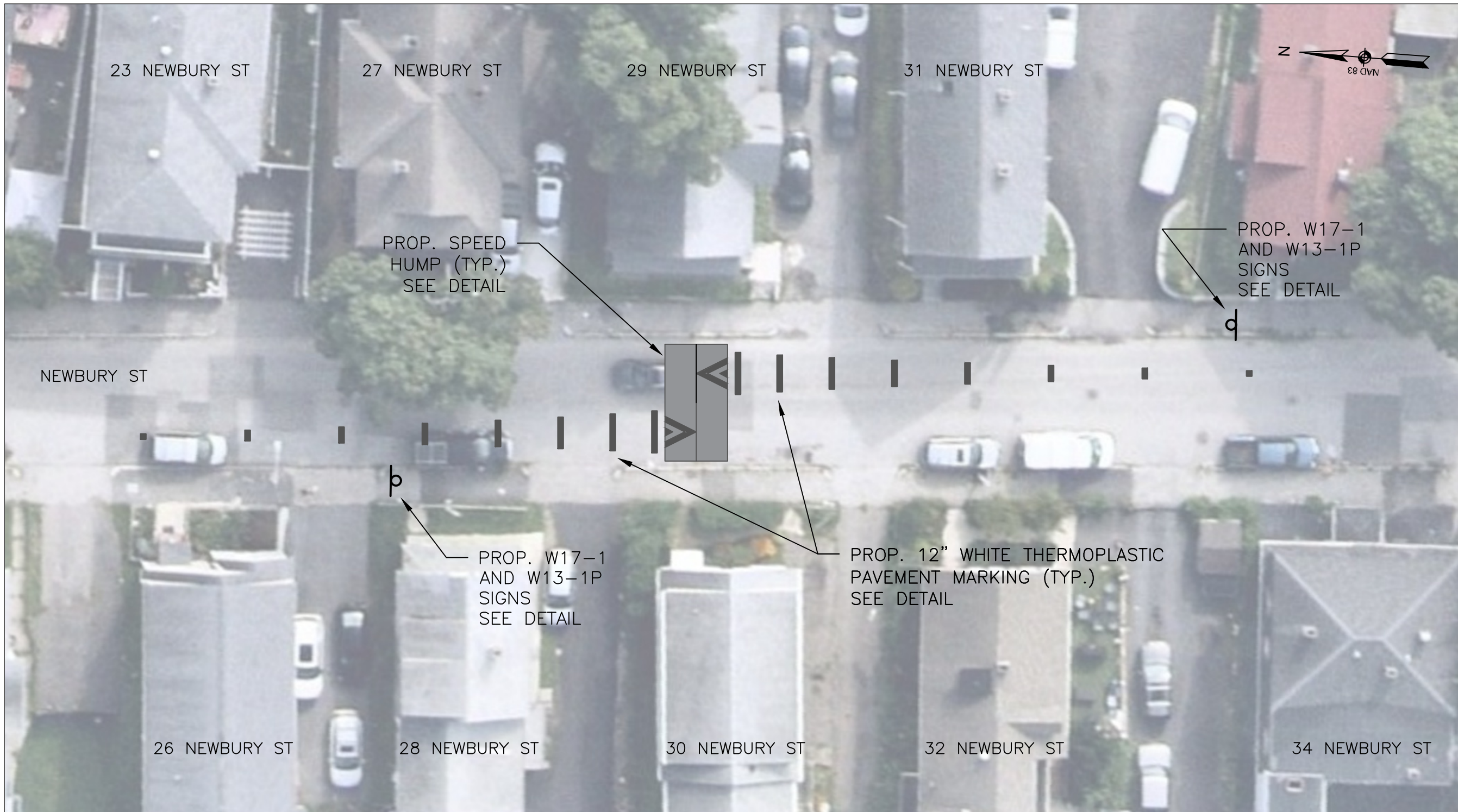
401 LOVELL STREET



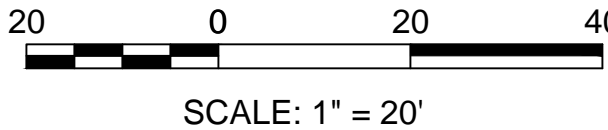
422 LOVELL STREET



8 NEWBURY STREET



30 NEWBURY STREET

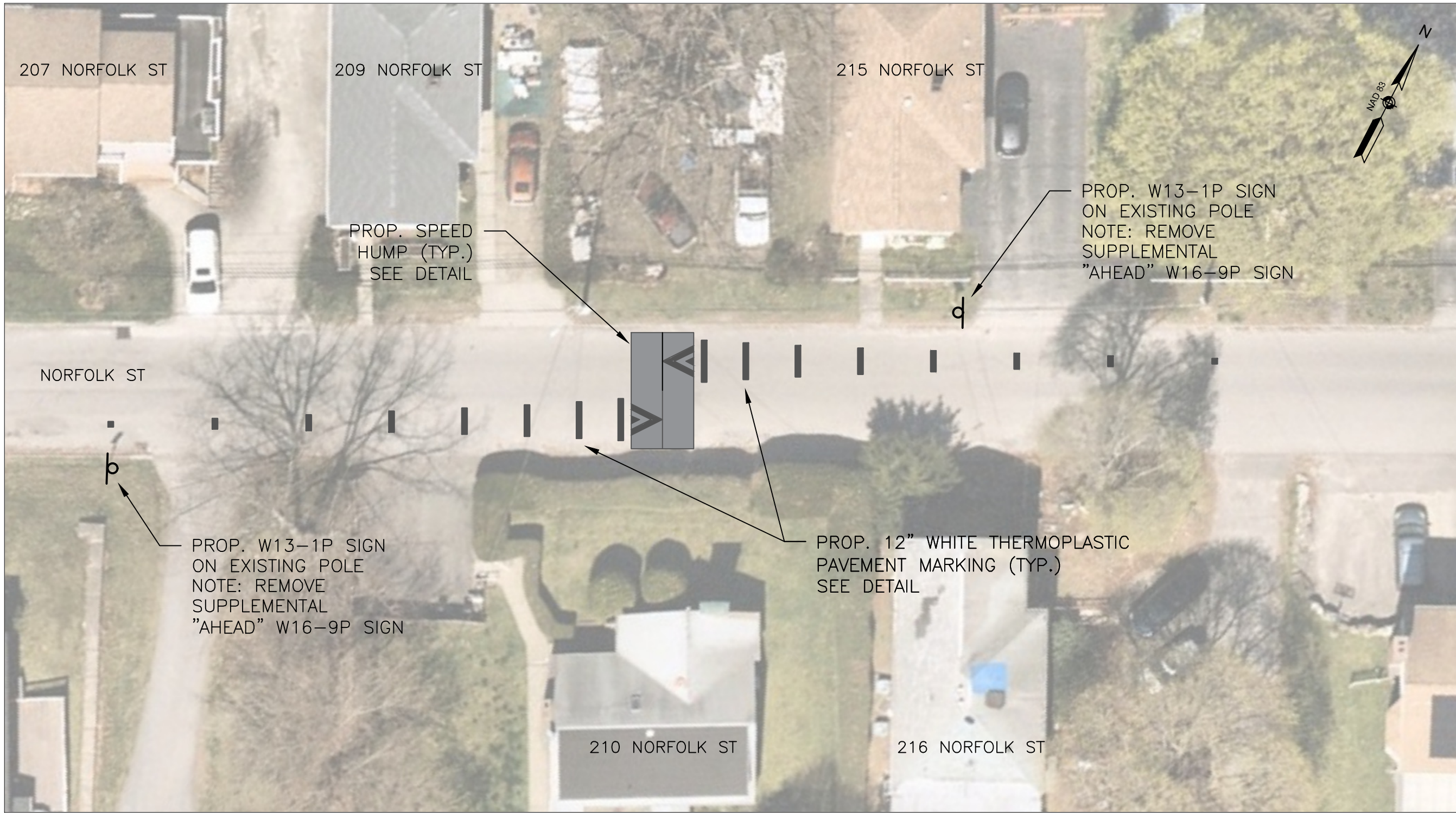


DEPARTMENT OF TRANSPORTATION AND MOBILITY 76 East Worcester St, Worcester MA 01604				
				BY
				DESCRIPTION
				DATE
				NO.
<div><p>TITLE: <b>CONSTRUCTION PLANS</b></p><p>DRAWN BY: PSC/SWG SCALE: (H) AS SHOWN SCALE: (V) AS SHOWN DATE: JUNE 6, 2025</p><p><b>SHEET 7 OF 13</b></p></div>				

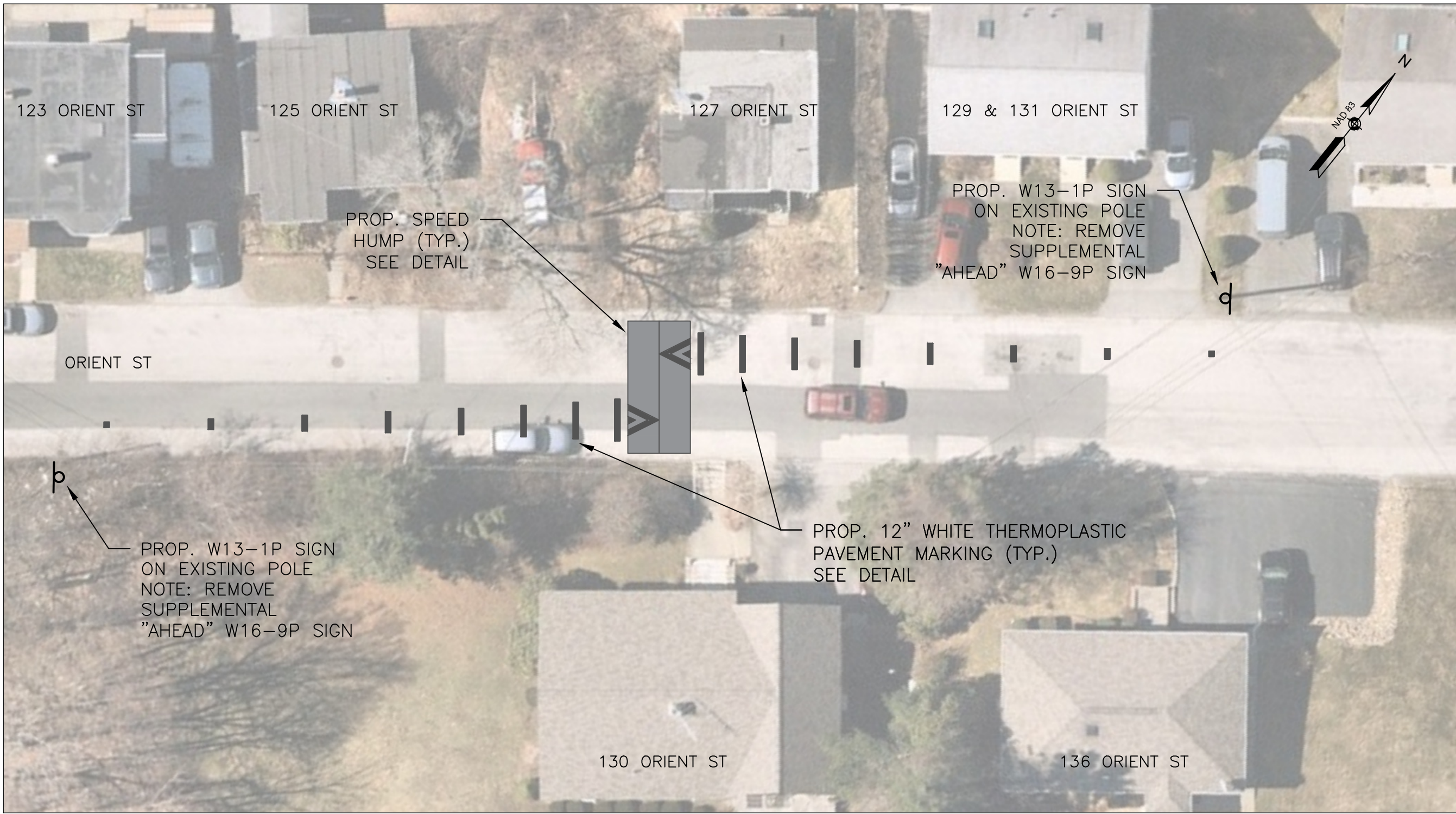




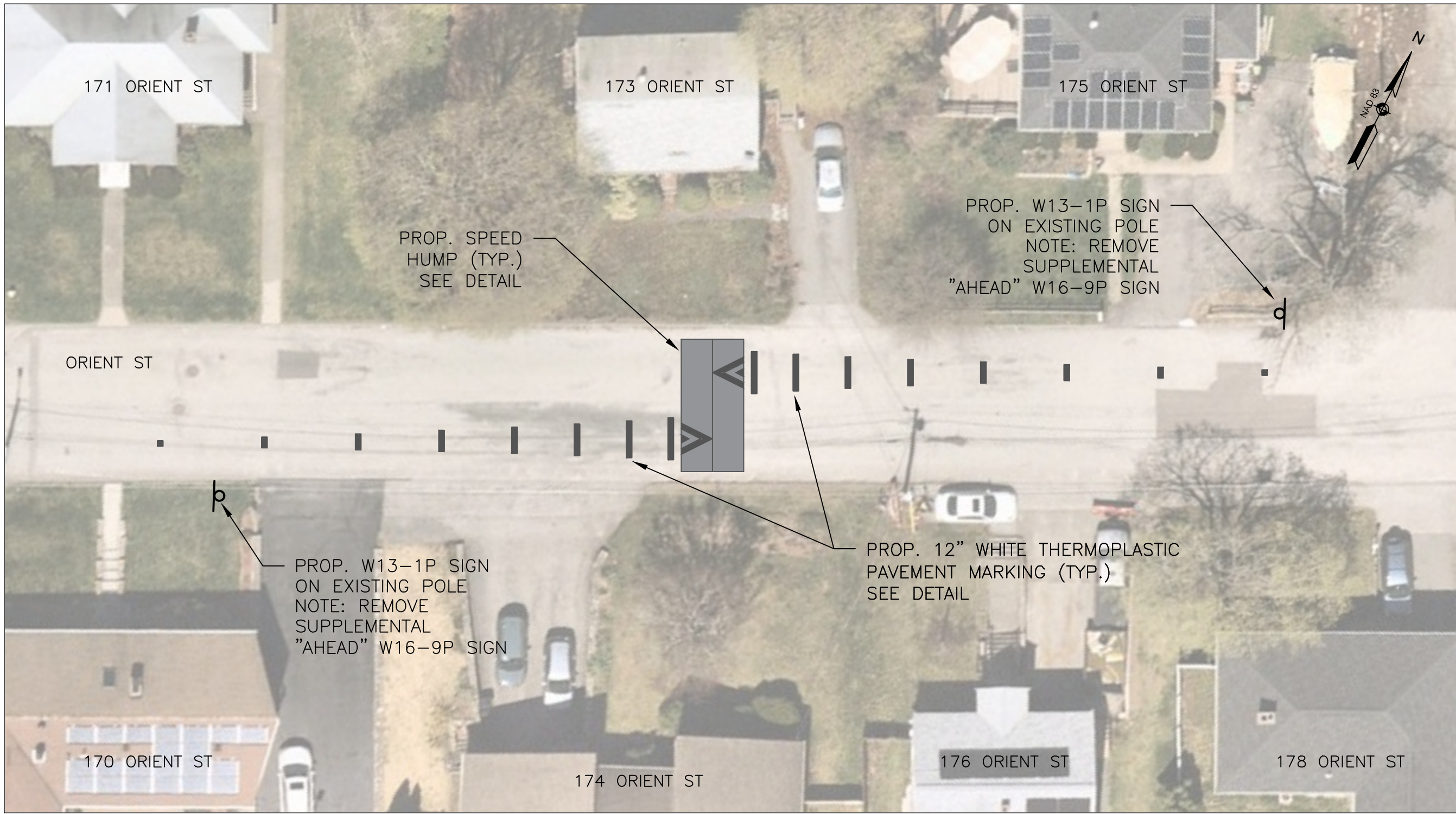
188 AND 188 1/2 NORFOLK STREET



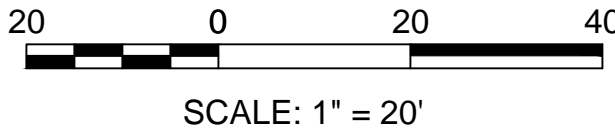
210 NORFOLK STREET



136 ORIENT STREET

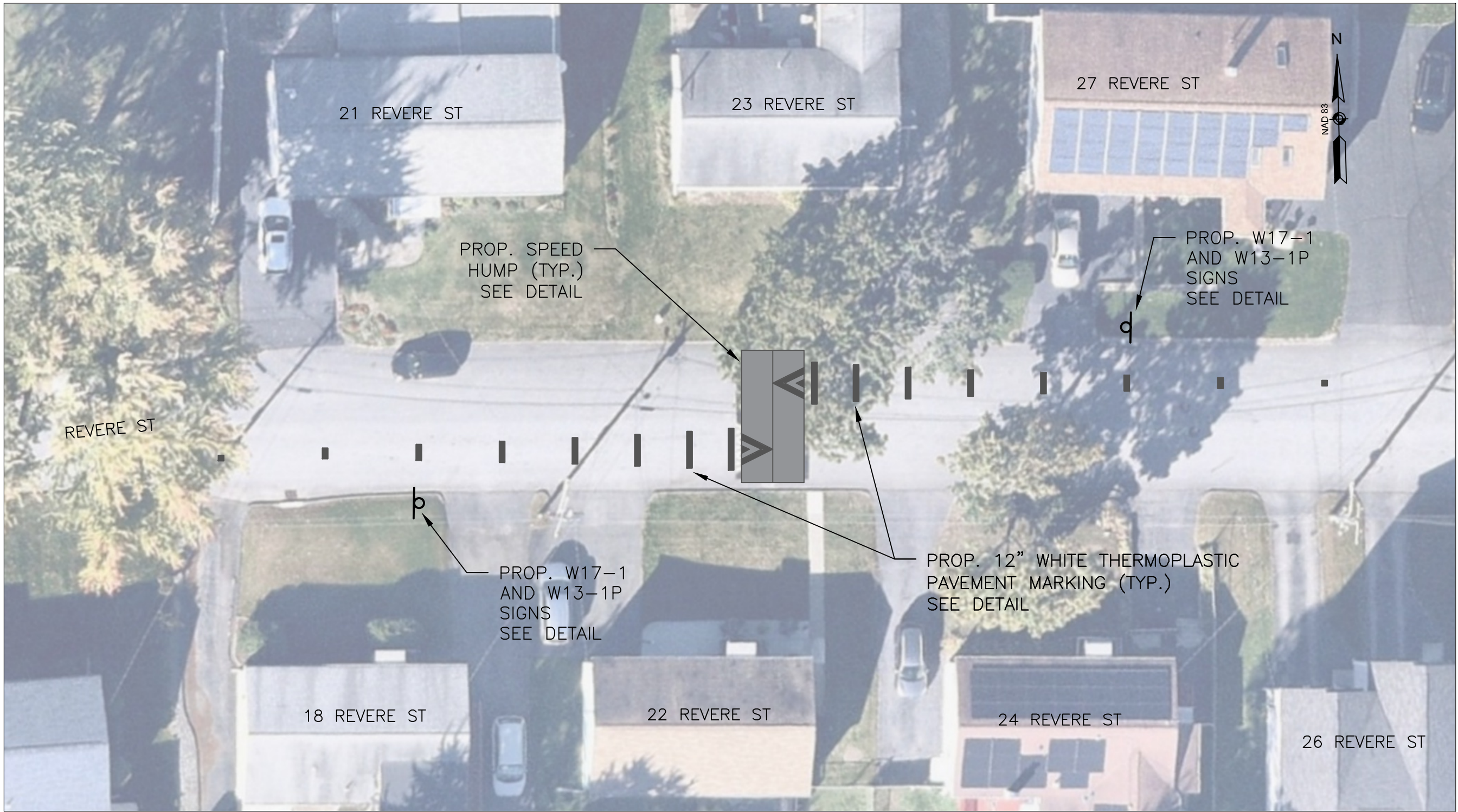


176 ORIENT STREET

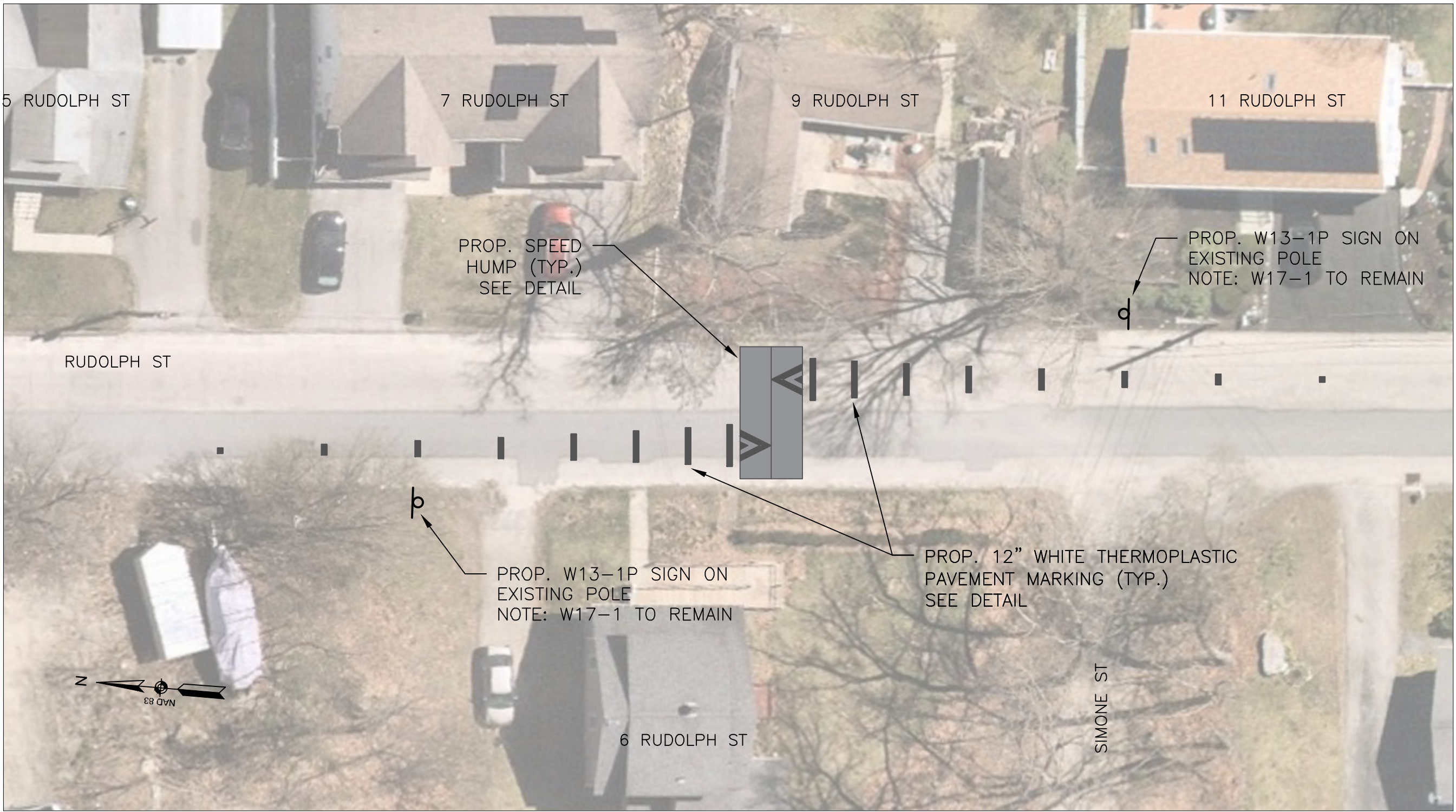


DEPARTMENT OF TRANSPORTATION AND MOBILITY 76 East Worcester St, Worcester MA 01604				
				BY
				DESCRIPTION
				DATE
				NO.
<div><p>TITLE: <b>CONSTRUCTION PLANS</b></p><p>DRAWN BY: PSC/SWG</p><p>SCALE: (H) AS SHOWN</p><p>SCALE: (V) AS SHOWN</p><p>DATE: JUNE 6, 2025</p><p><b>SHEET 8 OF 13</b></p></div>				

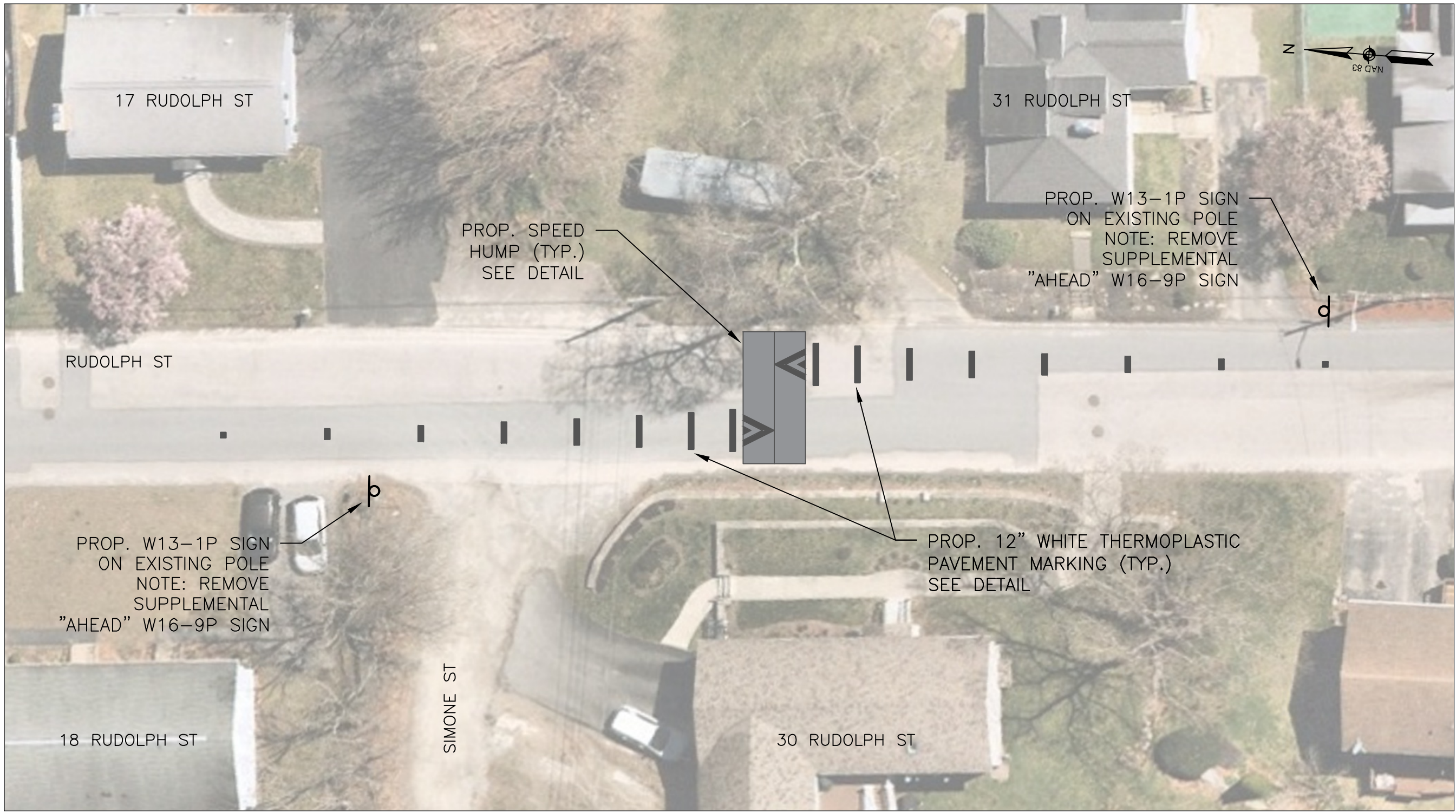




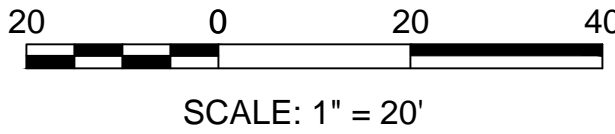
23 REVERE STREET



6 RUDOLPH STREET



30 RUDOLPH STREET



NO.	DATE	DESCRIPTION	BY

DEPARTMENT OF  
TRANSPORTATION AND MOBILITY  
76 East Worcester St, Worcester MA 01604



TITLE:	CONSTRUCTION PLANS
DRAWN BY:	PSC/SWG
SCALE: (H)	AS SHOWN
SCALE: (V)	AS SHOWN
DATE:	JUNE 6, 2025



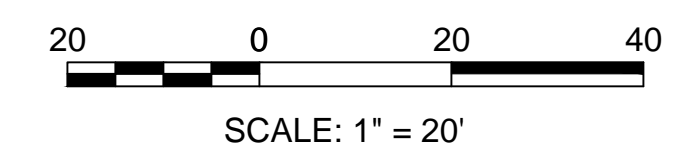
[illegible]

DEPARTMENT OF  
TRANSPORTATION AND MOBILITY  
76 East Worcester St, Worcester MA 01604



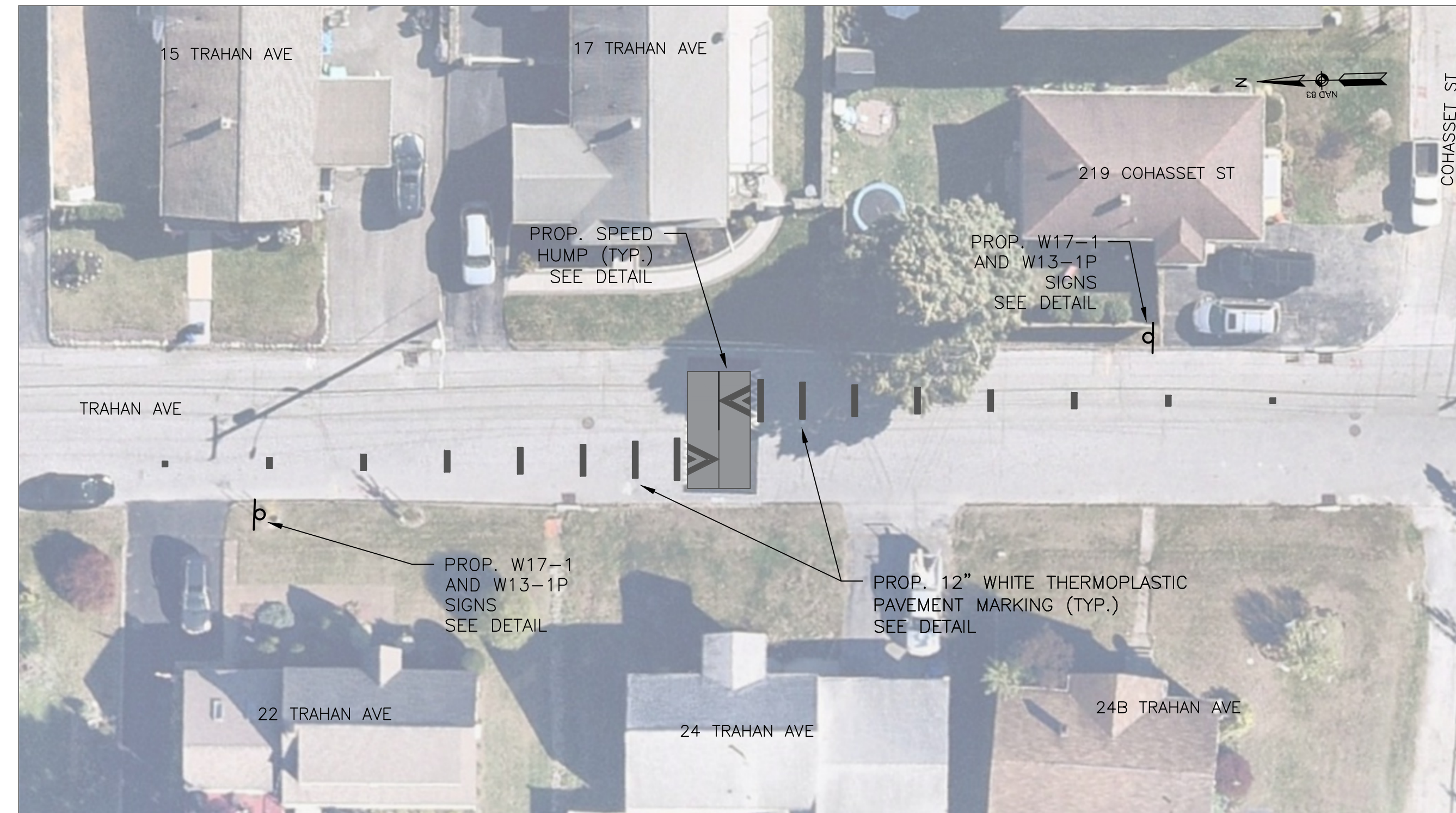
DRAWN BY:	PSC/SWG
SCALE: (H)	AS SHOWN
SCALE: (V)	AS SHOWN
DATE:	JUNE 6, 2025

**SHEET 10 OF 13**

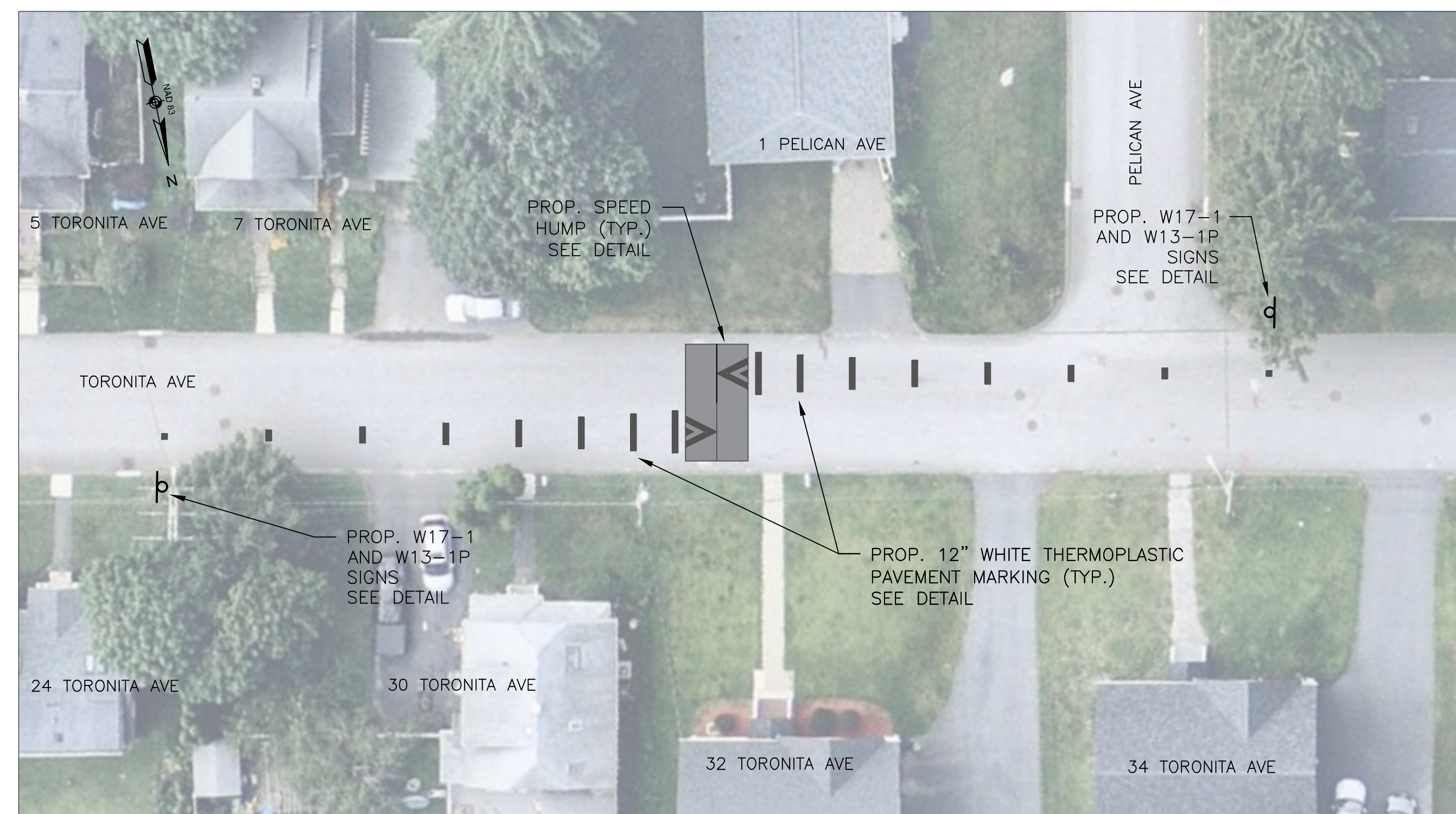




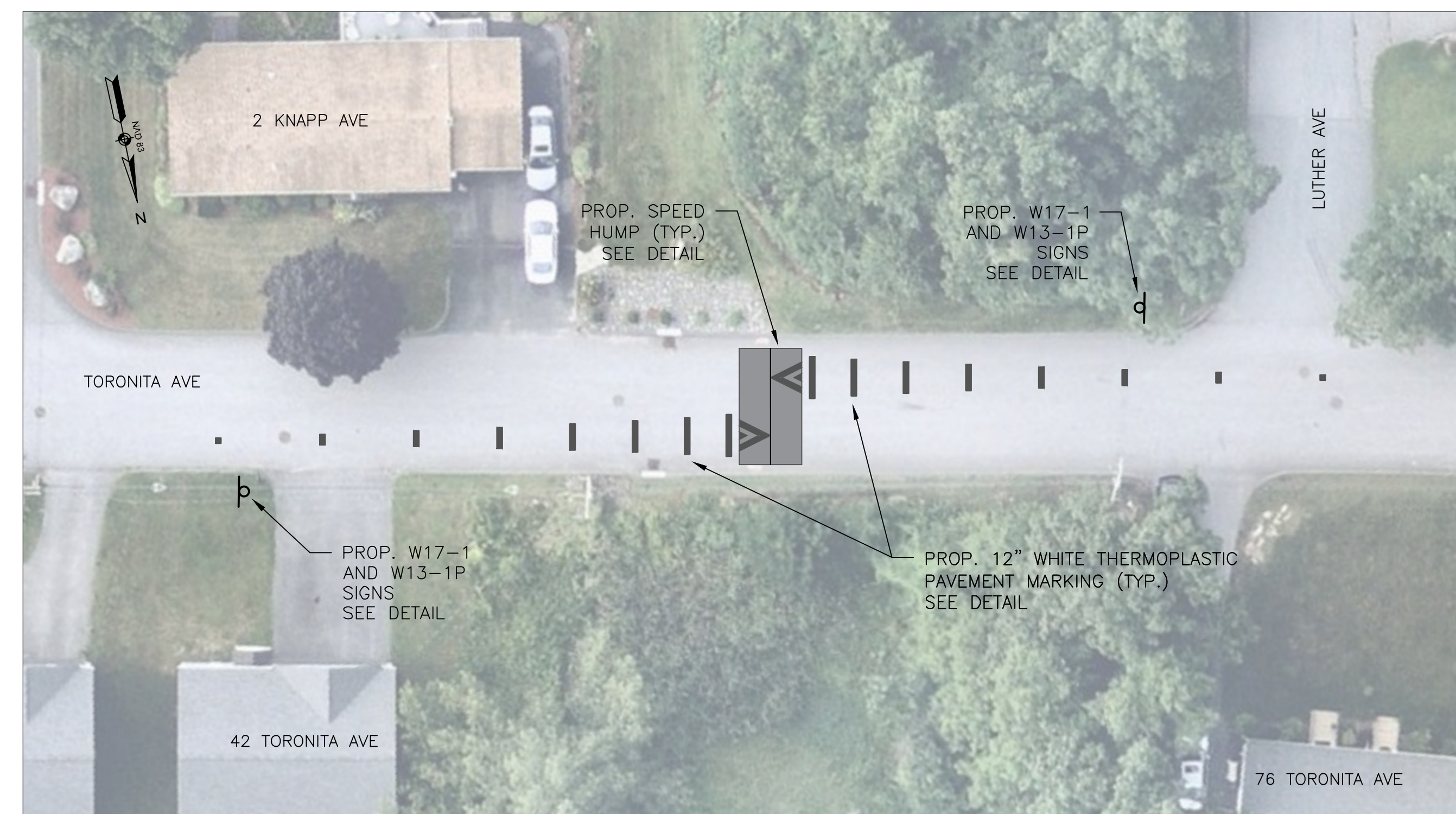
## 2025 SPEED HUMP INSTALLATION CONSTRUCTION PLANS



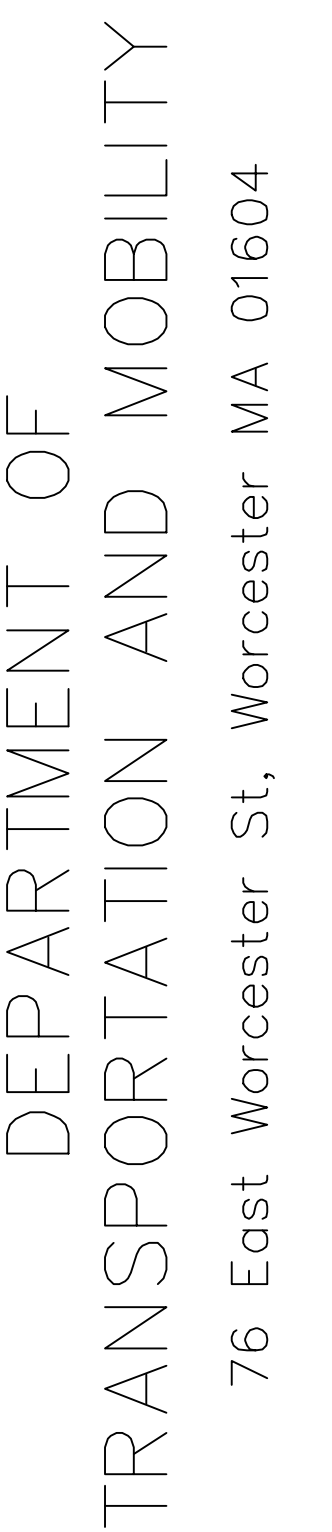
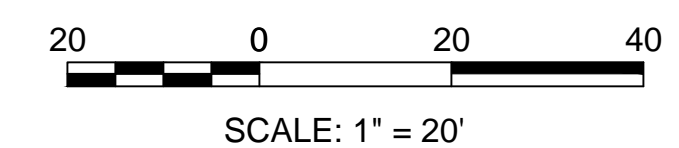
17 TRAHAN AVENUE



32 TORONITA AVENUE



42 TORONITA AVENUE



TITLE:  
**CONSTRUCTION  
PLANS**

DRAWN BY:	PSC/SWG
SCALE: (H)	AS SHOWN
SCALE: (V)	AS SHOWN
DATE:	JUNE 6, 2025

**SHEET 11 OF 13**



[illegible]

DRAWN BY:	PSC/SWG
SCALE: (H)	AS SHOWN
SCALE: (V)	AS SHOWN
DATE:	JUNE 6, 2025

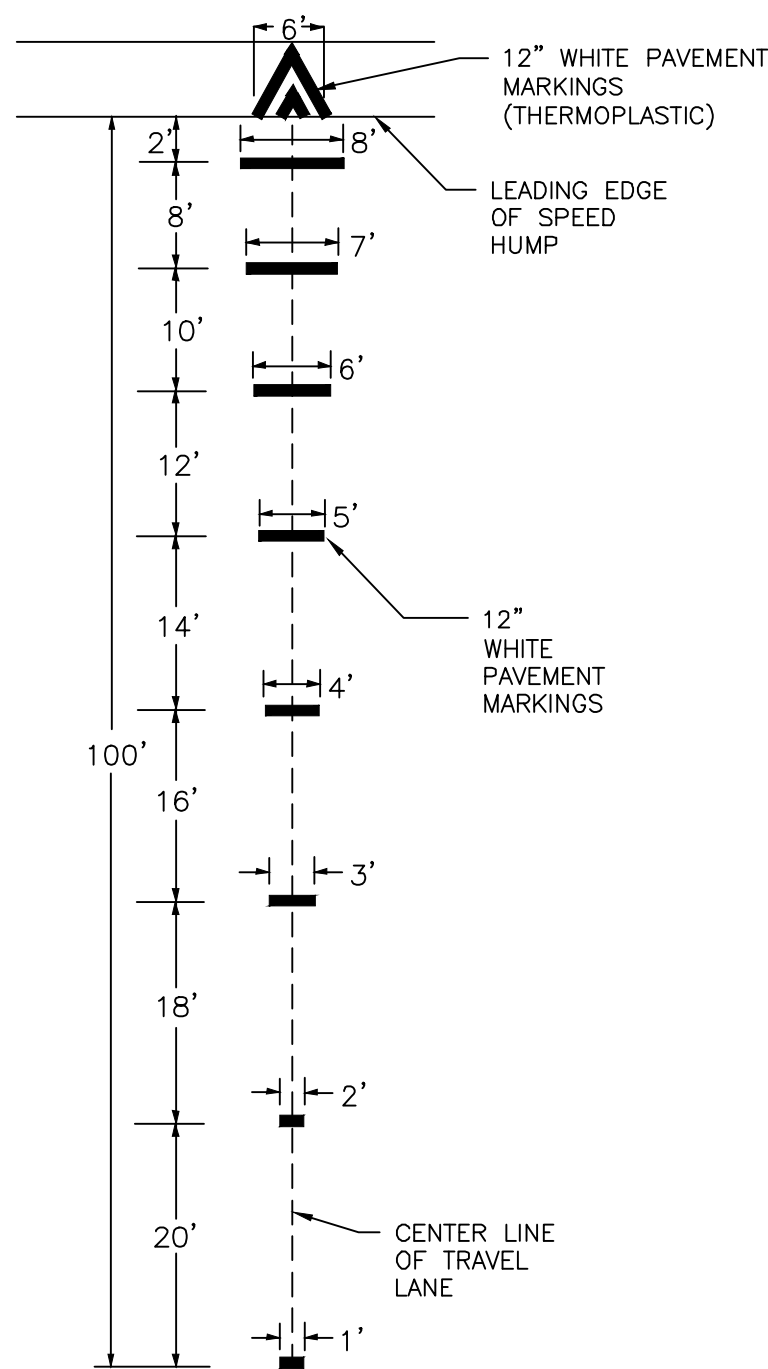
**SHEET 12 OF 13**



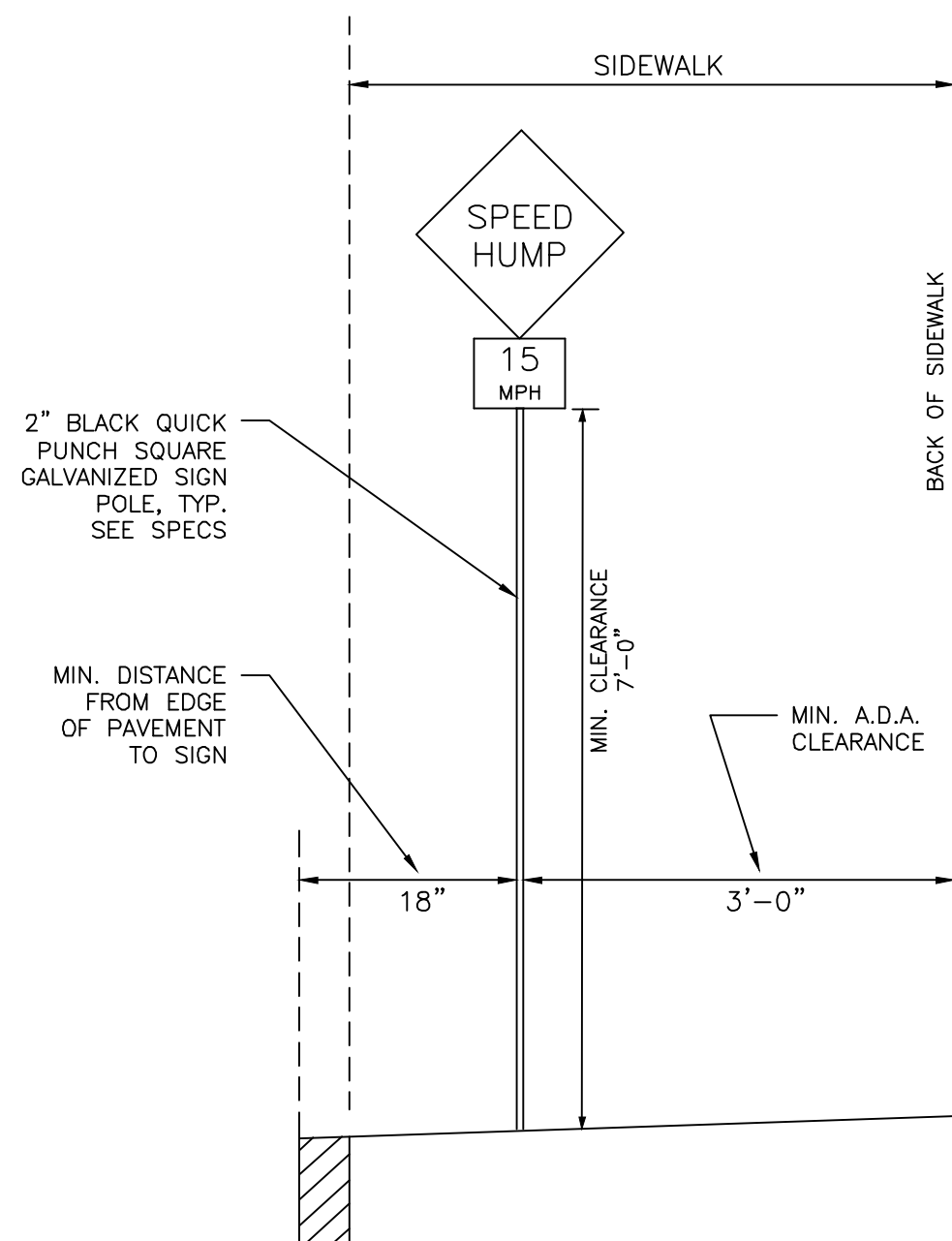
SECTION A-A

SECTION B-B

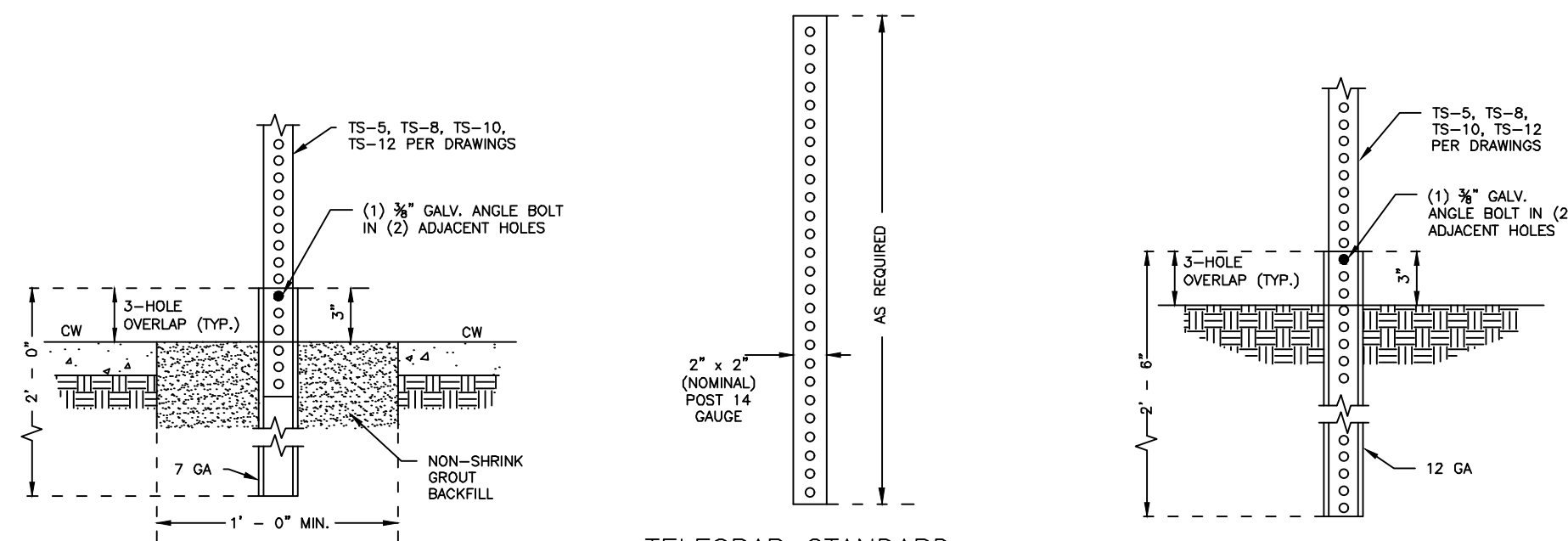
PARABOLIC CROWN SPEED HUMP  
NOT TO SCALE



ADVANCE WARNING MARKINGS  
NOT TO SCALE



TYPICAL SIGN DETAIL  
NOT TO SCALE



TELESPAR STANDARD  
SIGN POST

LIGHT DUTY ANCHOR

TRAFFIC SIGN POLE SPECIFICATIONS:

ALL SIGNS SHALL BE MOUNTED ON 2 INCH BLACK (PAINT/POWDER COAT FINISH) QUICK PUNCH SQUARE GALVANIZED POLES. ALL POLES SHALL BE SECURED TO 2 1/4 INCH GALVANIZED ANCHORS EXTENDING NO MORE THAN 6 INCHES ABOVE FINISHED GRADE OF SIDEWALK OR TREATED LAWN (HARDWARE SHALL CONSIST OF 5/16" ZINC PLATED CORNER BOLT FASTENED WITH AN ACORN NUT.



PORTIONS OF ANCHORS EXTRUDING ABOVE THE GROUND SURFACE SHALL BE SPRAY PAINTED BLACK IN THE FIELD.

ALL STREET NAME SIGNS WILL BE MOUNTED ON TOP OF POLE WITH A TOP MOUNT BRACKET AND OR BY MEANS OF A CANTILEVER BRACKET. SIGNS SHALL BE PARALLEL TO CORRESPONDING STREET. SIGNS IN EXCESS OF 36" LONG, MOUNTED WITH A CANTILEVER BRACKET, SHALL BE MOUNTED WITH A BRACKET EXTENSION.

ALL POLE ASSEMBLIES WITHOUT TOP MOUNTED SIGNS WILL BE FITTED WITH 2" RAIN CAPS.

ALL SIGNS SHALL BE SECURED TO POLES BY MEANS OF VANDAL PROOF 5/16" RIVETS. ALL SIGNS SHALL BE MARKED ON THE BACK SIDE IN LINE WITH MOUNTING HOLES WITH LOCATION AND DATE OF INSTALLATION. BOTTOM OF LOWEST SIGN ON POLE SHALL BE INSTALLED 7' ABOVE SIDEWALK OR GROUND SURFACE.

TRAFFIC SIGN POLE  
NOT TO SCALE

IDENTIFICATION NUMBER	SIZE OF SIGN		TEXT	NUMBER OF SIGNS REQUIRED	COLOR		
	WIDTH (IN)	HEIGHT (IN)			BACK— GROUND	LEGEND	BORDER
W-17	30	30		40	YELLOW	BLACK	BLACK
W13-1P(15)	18	18		68	YELLOW	BLACK	BLACK

## CONSTRUCTION SIGN SUMMARY



TITLE: **STANDARD  
DETAILS**

<b>DRAWN BY:</b>	<b>PSC/SWG</b>
<b>SCALE: (H)</b>	<b>AS SHOWN</b>
<b>SCALE: (V)</b>	<b>AS SHOWN</b>
<b>DATE:</b>	<b>JUNE 6, 2025</b>