

The City of Worcester is seeking bids from DCAMM certified contractors to furnish, deliver, install and configure cameras, access control hardware and panic buttons at City Hall, located at 455 Main St. in Worcester, MA.

- Contractor to provide a lump sum bid price for all items, equipment and services listed herein (please enter on general bid form)
  - Contractor to be responsible for installation and aiming, cabling, programming of any, and all, access card readers, electric strikes, magnetic locks, IP cameras, exit motion sensors, door controllers and panic buttons.
  - All equipment is to integrate into an existing Genetec VMS Access Control System.
  - Cameras must be Axis Communications cameras.
  - Fob readers must all be HID Signo readers.
  - Contractor is responsible for acquisition of any, and all, required Genetec licensing.
  - Contractor to coordinate with City's alarm company for any necessary emergency unlocks.
  - Contractor to coordinate with City's elevator company for all elevator work.
  - Wiring shall be snaked / concealed in the walls. No exposed wiring or conduit. Locking hardware shall match existing.
  - Access control will integrate with existing on premises Genetec Cloud Link access control system. Any Genetec work must be performed by Genetec Certified Technician.
  - All work associated with powering panel must be coordinated with City's electrical contractor.
  - Hardware panel for new access control location is TBD.
  - Installation must meet all federal, state and local codes.
  - Contractor responsible for removal of all trash associated with work, daily.
  - Contractor must have a valid S-license. Please include copy with bid submission.
- ❖ City of Worcester is responsible for providing 120V connections and PoE for cameras.

A Pre-Bid Site Visit will be held on Tuesday, April 29, 2025 at 10:00 AM at City Hall, 455 Main Street. Please meet at 1<sup>st</sup> Floor information desk.

All bidders are strongly encouraged to attend this site visit to familiarize themselves with the building dynamics of Worcester City Hall.

Locations receiving upgrades are as follows:Elevators

Each elevator (2) shall include an exterior fob reader at call buttons on each floor. Each elevator cabin shall include a fob reader. Programming of elevator to include the ability to disable basement access unless fobbed and ability to override exterior and interior fob readers to allow access on all levels by the public.

Axis PoE camera in each elevator cabin

Basement

HID fob reader at each elevator call button

1<sup>st</sup> Floor

2 doors - locking hardware and fob readers required

HID fob reader at each elevator call button

2 panic buttons (customer service & HR)

2 Axis Communications PoE cameras

Interior front entrance hallway camera must have an HDMI output to plug into a commercial display that will be mounted nearby

32” commercial display w/ wall mount, mounted to wall at front entrance hallway

2<sup>nd</sup> Floor

HID fob reader at each elevator call button

7 doors – locking hardware and fob readers required, Treasury will require dual factor reader (Signo fob reader with numpad)

6 Axis Communications PoE cameras

6 panic buttons

3<sup>rd</sup> Floor

HID fob reader at each elevator call button

15 doors – locking hardware and fob readers required

6 panic buttons

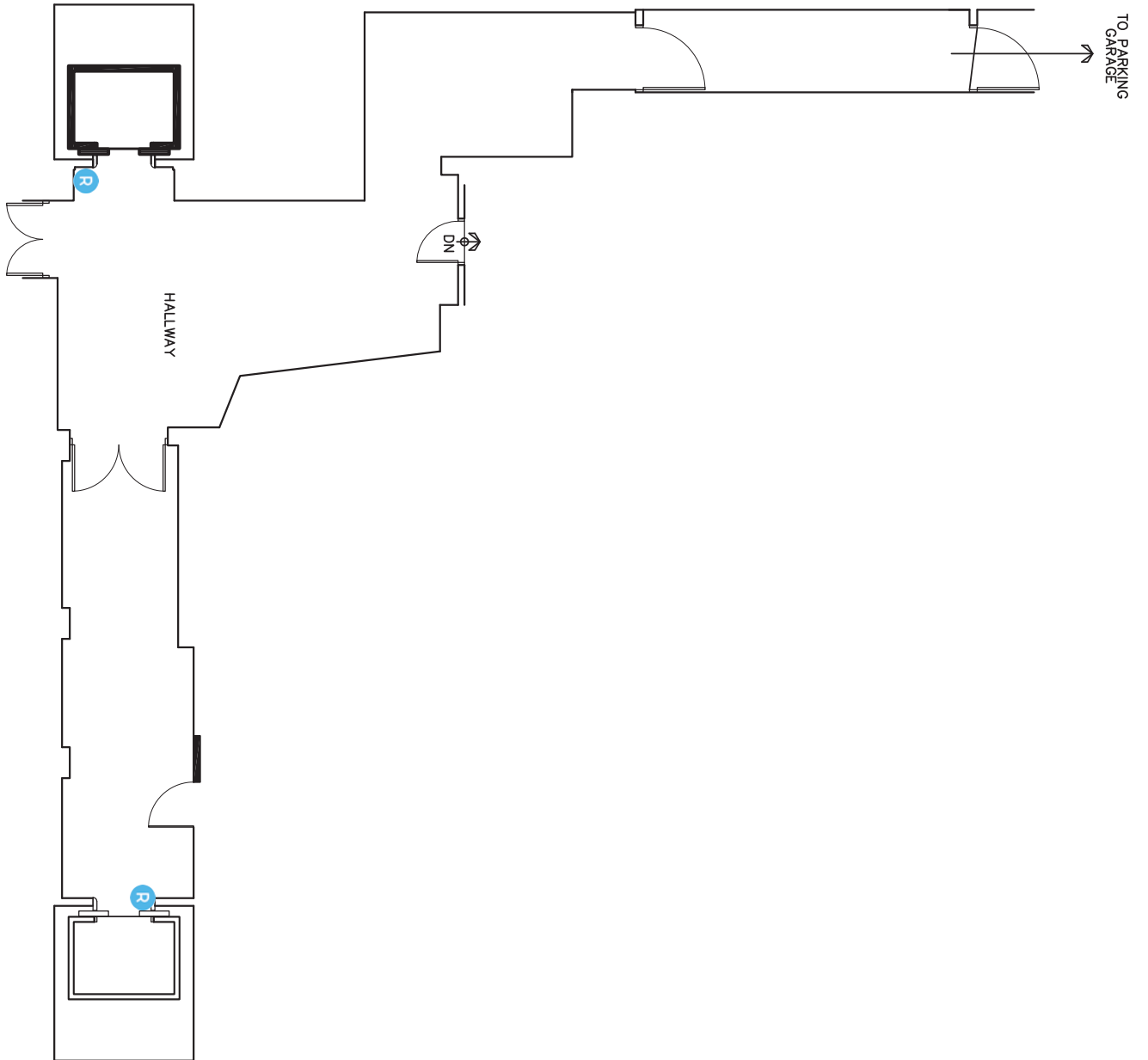
4<sup>th</sup> Floor


HID fob reader at each elevator call button

2 doors – locking hardware and fob readers required

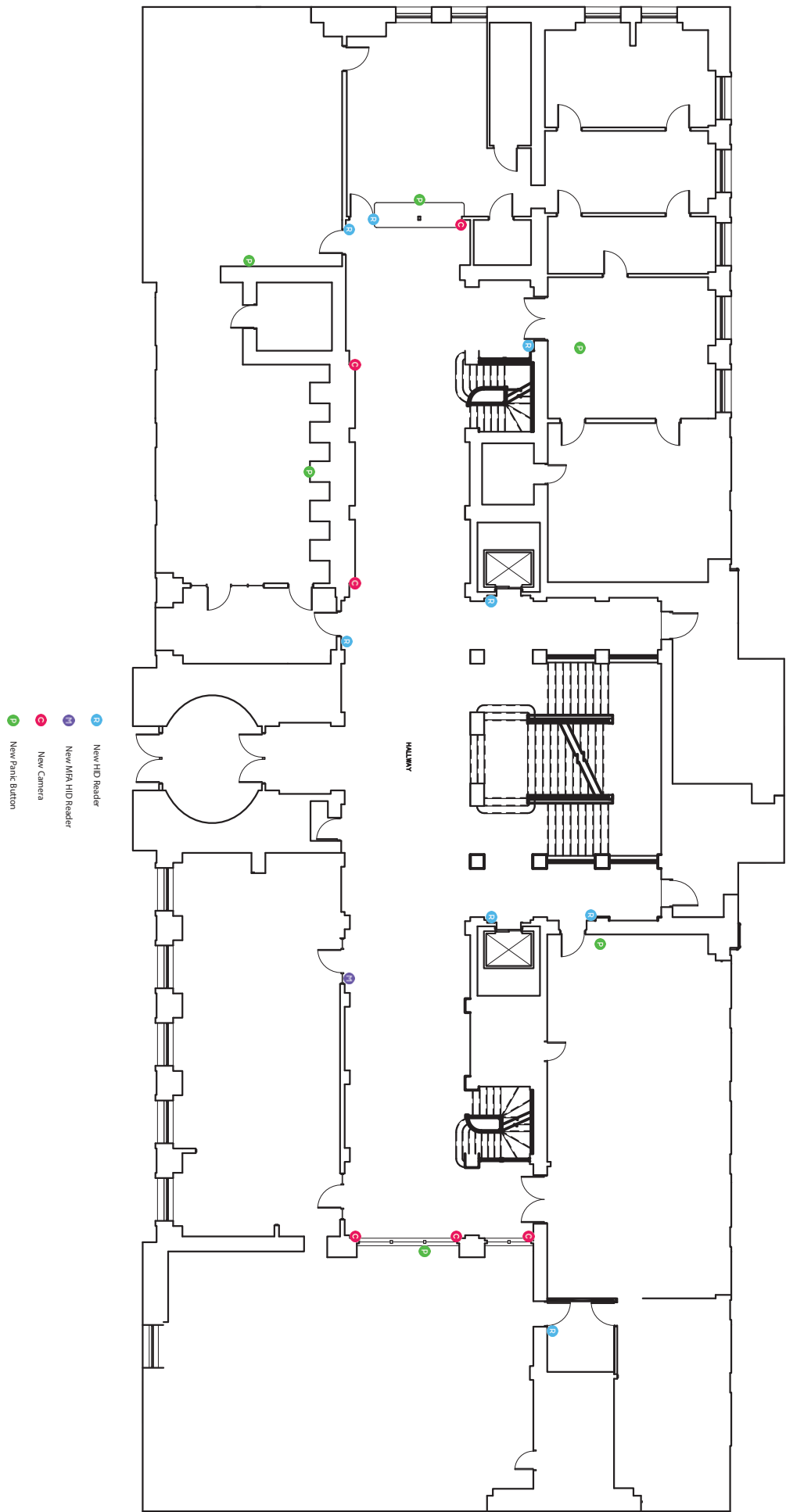
4 panic buttons

# Basement Floor Plan

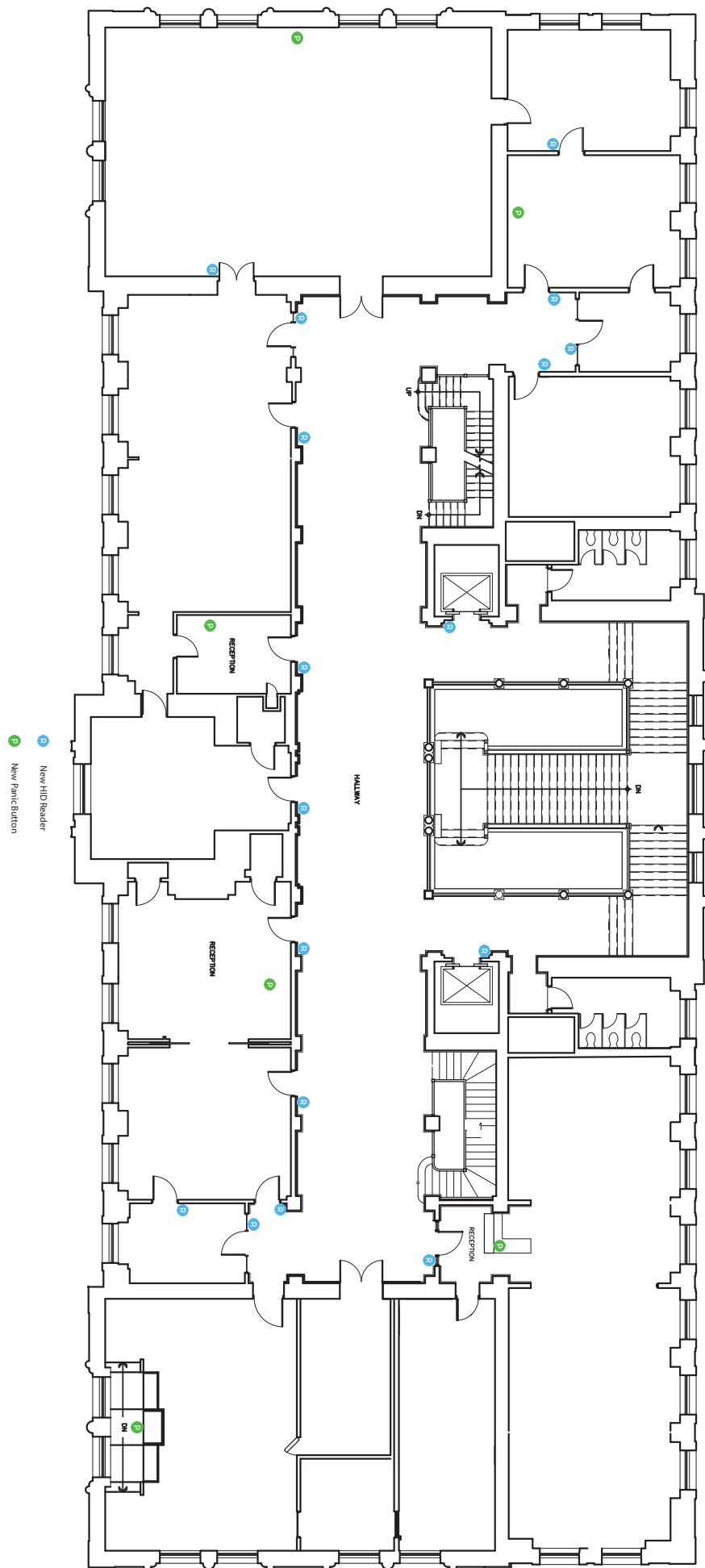


 New HID Reader

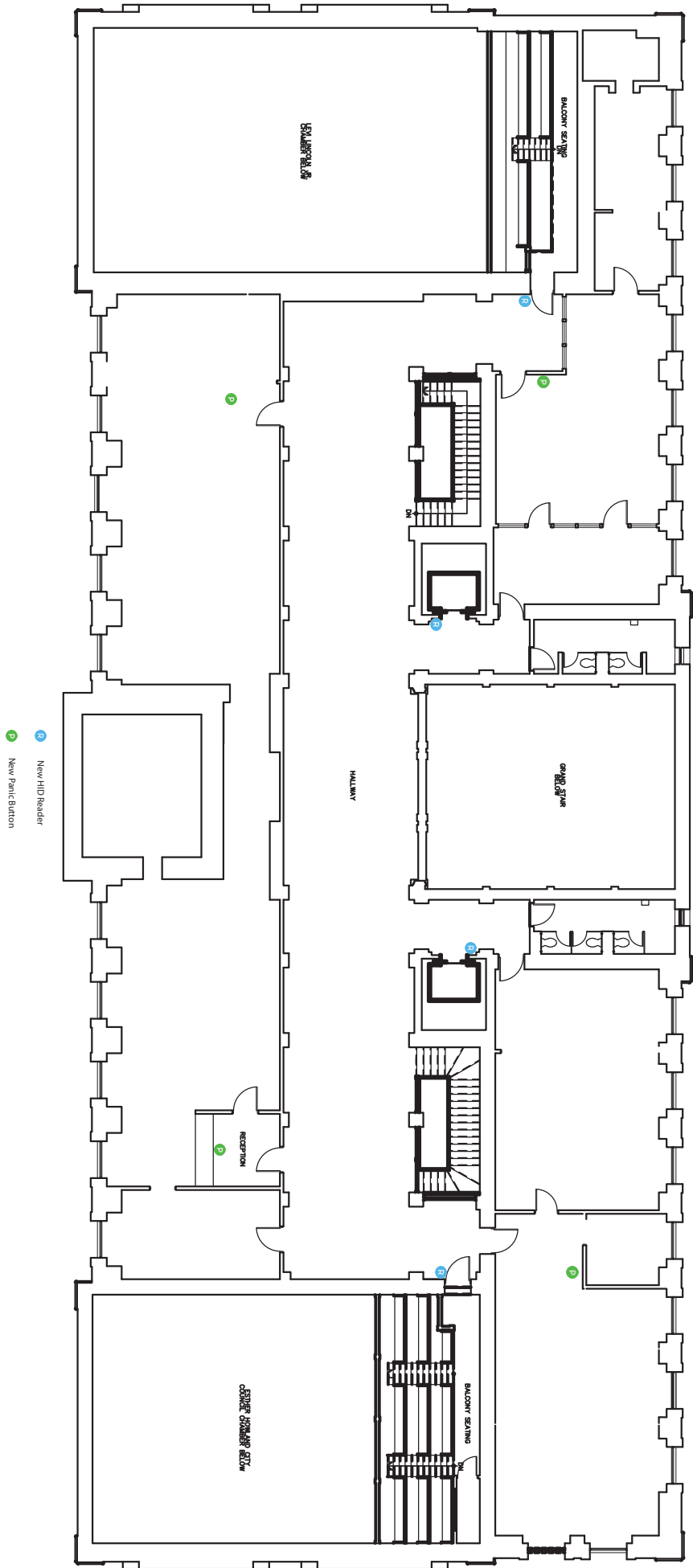




**Second Floor Plan**



Third Floor Plan



Fourth Floor Plan