



The City of Worcester

Department of Sustainability & Resilience
John Odell, Chief
51 Sever Street, Room 310 Worcester, MA 01609
P| 508-799-8324
GreenWorcester@worcesterma.gov

Request for Proposals **Design-Install Services for** **Nature-Based Solutions Stewardship Maintenance Program - Municipal** **Rain Gardens**

Attachment A – GSI Inventory

Conducted by City Staff in the Summer of 2024

1. Shore Park – Rain Garden

Latitude/Longitude: 42.303103, -
71.812748

Signage Present: Yes

Parking: 115 Shore Dr, Worcester,
MA, 01605

Square Footage: 2,500 -
FocalPoint Biofiltration System

Managed by: Parks Department

Description: A 2,500 SF rain garden was installed at Shore Park sometime in the last ten years. The Rain Garden is circular and includes signage. It is located on the right-hand side of the park. You can park at Shore Park or the YMCA next door if the park is closed. The rain garden is in fairly good shape compared to some of the city's other installations as it has received periodic maintenance from the Worcester Native Plant Initiative. Evaluations, designs, and maintenance plan of this site should consider recommended maintenance of FocalPoint products.





2. Crompton Park – Rain Garden

Latitude/Longitude: 42.250178, -71.804598

Signage Present: No

Parking: Crompton Park Skate Park

Square Footage: 1,200

Managed by: Parks Department

Description: There is a rain garden along the side of the Crompton Park skate park. It is wedged between the park and Quinsigamond Avenue. There is no signage, and the depression for the rain garden is light.



3. Coal Mine Brook – Rain Garden (FocalPoint Biofiltration)

Latitude/Longitude: 42.290725, -71.758474

Signage Present: Yes

Parking: 616 Plantation St, Worcester, MA 01605

Square Footage: 30 SF

Owner/Managed By: Water and Sewer / Lakes and Ponds

Description: There is a signed 30 SF FocalPoint Biofiltration System rain garden near the culvert by Coal Mine Brook. The rain garden is in a somewhat remote location, and receives runoff to provide filtration before stormwater enters Lake Quinsigamond. Across the street from the East-West Trailhead there is a rough sloping dirt path that leads you down to Lake Quinsigamond. At the bottom is a sign depicting the water filtration project. It looks as though most of the plants that were planted have died. You can park along Lake Ave North or in the Coal Mine Brook Park's parking lot and walk (.1 miles). Evaluations, designs, and maintenance plan of this site should consider recommended maintenance of FocalPoint products.





4. Morgan Landing – Rain Garden (FocalPoint Biofiltration)

Rain Garden Latitude/Longitude: 42.293584, -71.816808; 42.294358, -71.817294

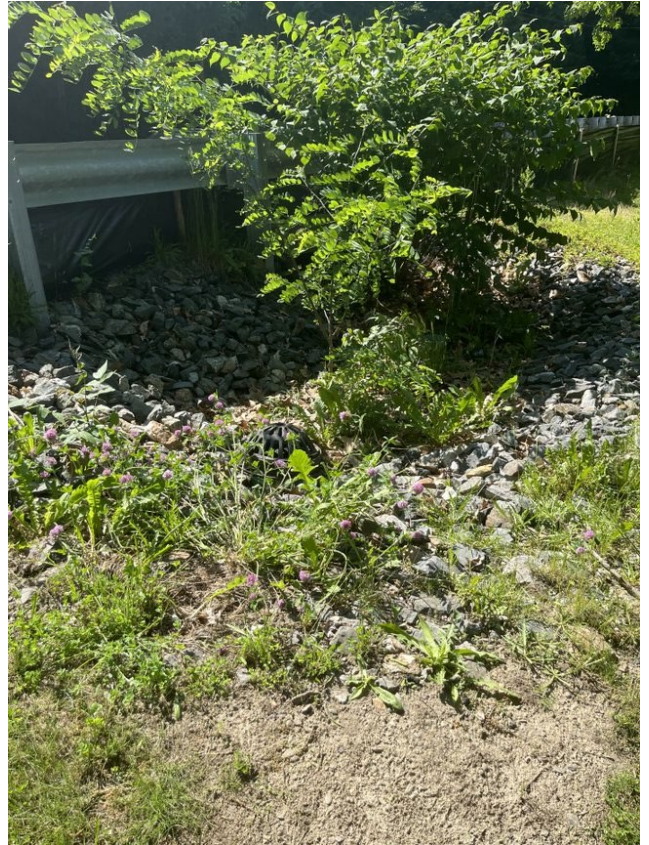
Signage Present: No

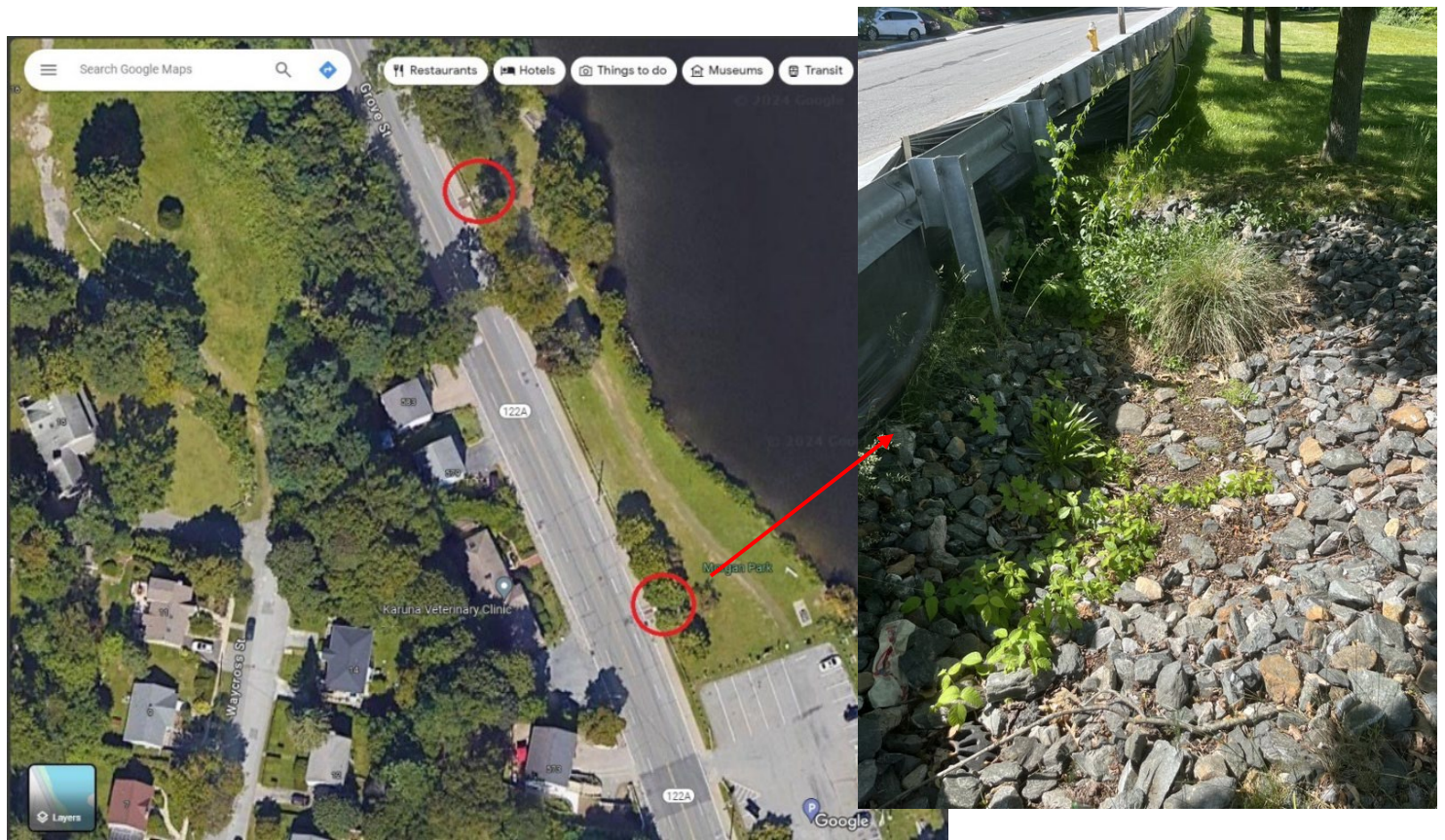
Parking: 580 Grove St, Worcester, MA 01605

Square Footage: Approximately 30 SF Each

Owner/Managed By: Water and Sewer

Description: There are two small FocalPoint Biofiltration System Rain Gardens at Morgan Landing. The gardens have drains to collect runoff from the sidewalk and street nearby. Surficial runoff from drainage areas on Grove Street flows through a drain under the sidewalk and into riprap before getting filtered through the FocalPoint media. The drains are overlaid with a sidewalk crossing casting, which should be inspected and cleaned in the maintenance activities. You can see the drains on the nearby sidewalks, helping you identify these two rain gardens. Both FocalPoints include beehive overflows which should be inspected and cleaned. Evaluations, designs, and maintenance plan of this site should consider recommended maintenance of FocalPoint products.





4. Northeast Cutoff – Rain Garden

Rain Garden Latitude/Longitude:

42.305306, -71.764588 - Off of Northeast Cutoff

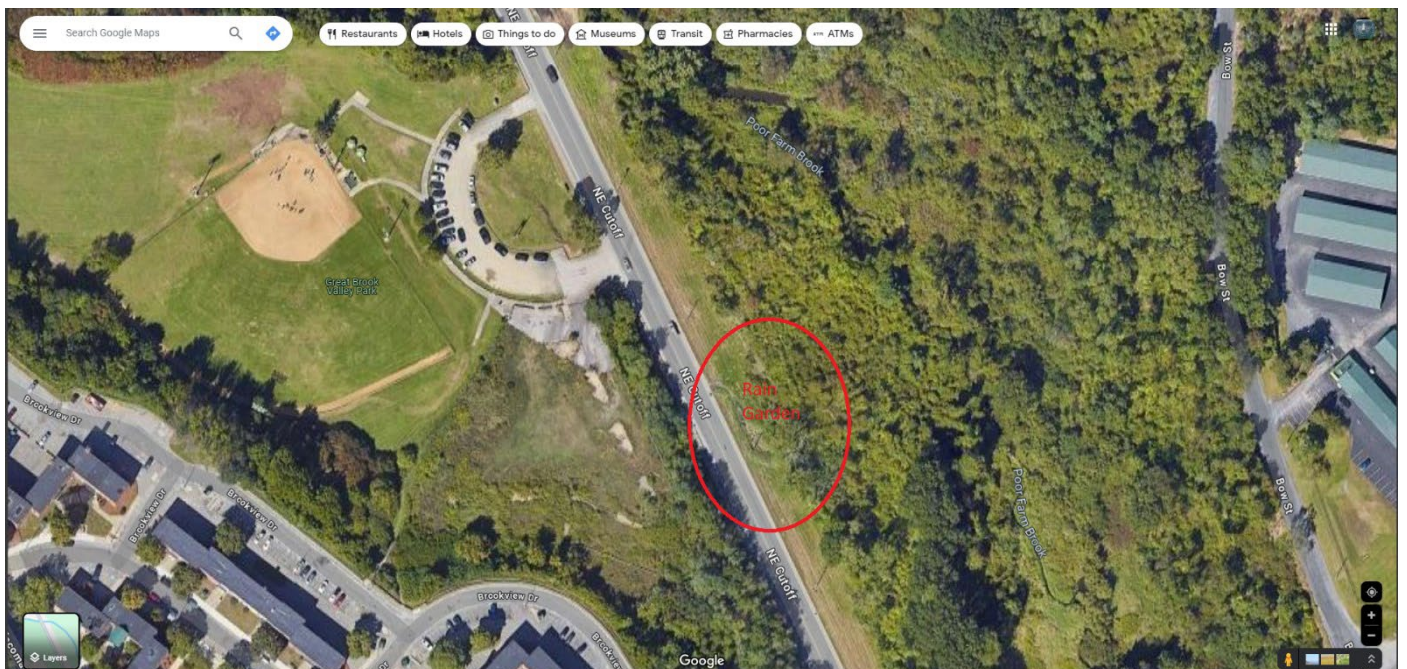
Signage Present: No

Parking: Great Brook Valley Park, 485 Tacoma St, Worcester, MA 01605

Square Footage: ~3,500

Owner/Managed By: Water and Sewer

Description: The large rain garden is across the street from Great Brook Valley Playground. It is unsigned and overgrown. Surficial runoff enters the garden through a curb cut, passing over riprap for sediment control before settling into a planted infiltration area.



6. Francis McGrath Elementary School – Rain Garden

Latitude/Longitude: 42.284706, -71.813080

Signage Present: No

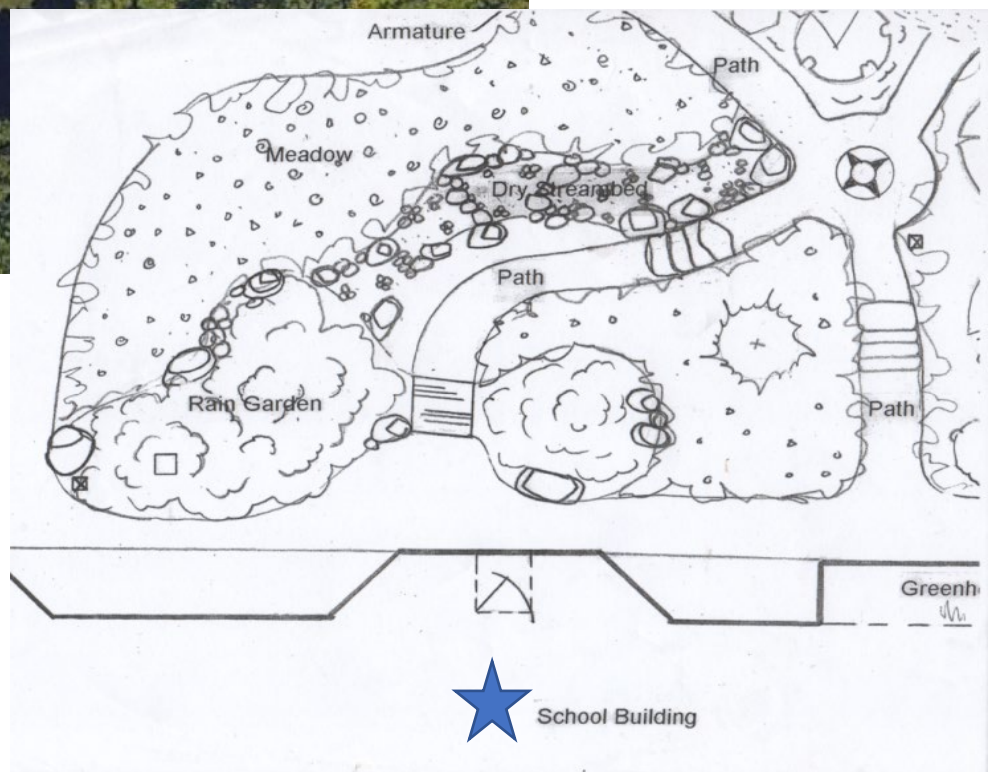
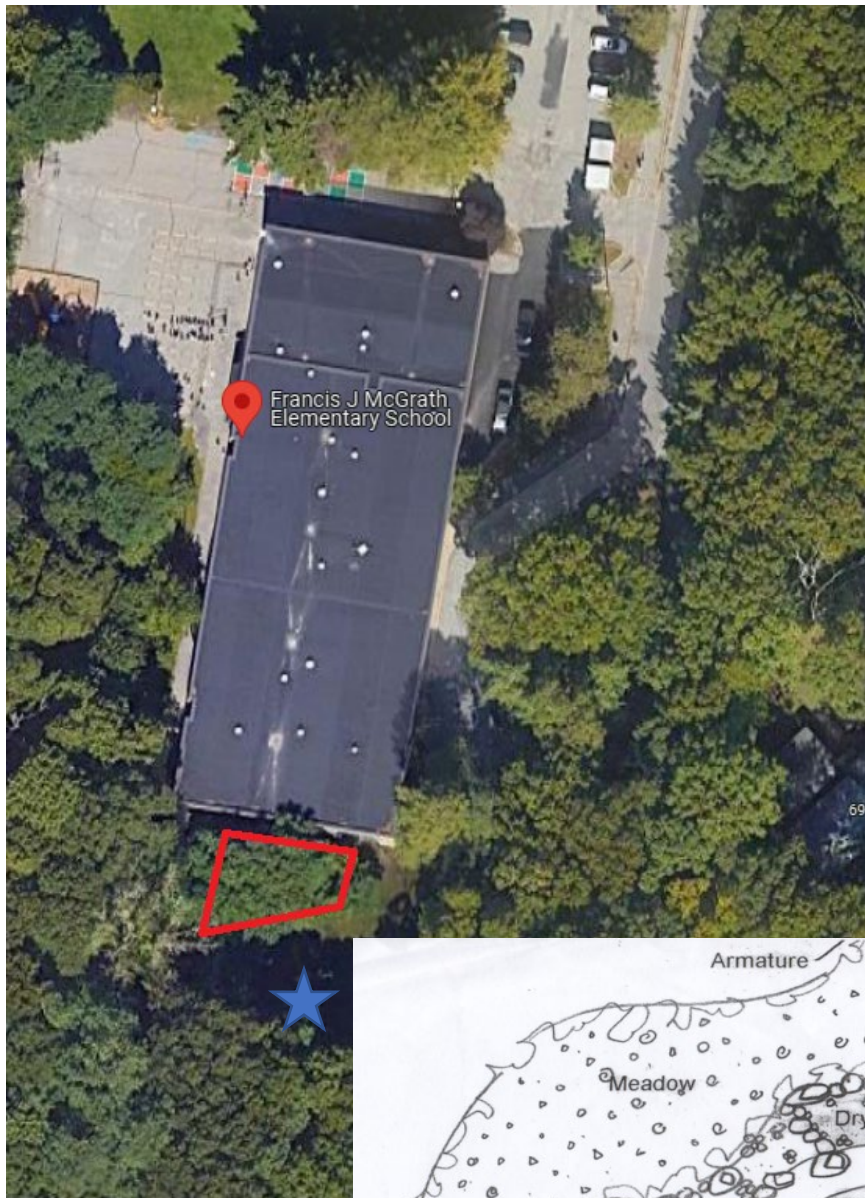
Parking: 493 Grove St, Worcester, MA 01605

Square Footage: ~500

Owner: Worcester Public Schools

Description: On the side of Francis McGrath Elementary School, there is a medium-sized rain garden that spreads across two sides of a path to the school's meadow. The larger half of the rain garden is on a slope coming down from the meadow. The rain garden looks overgrown. The stars indicate the orientation of the map versus the sketch.





7. Midland Elementary School – Rain Garden

Latitude/Longitude: 42.271116, -71.826371

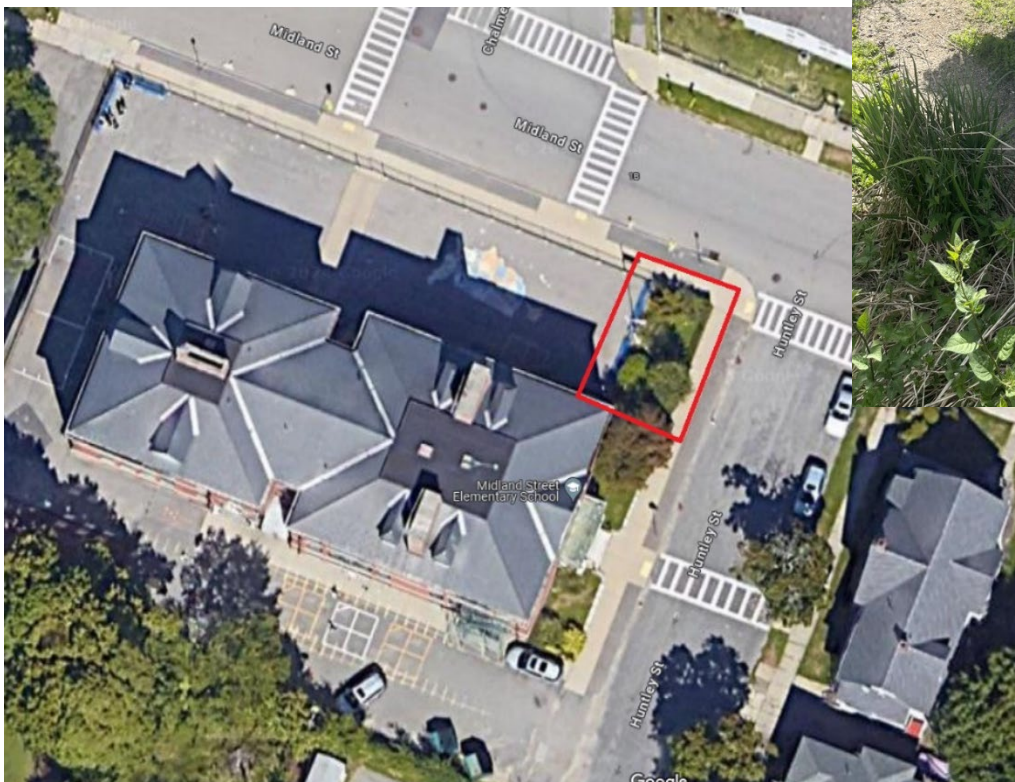
Signage Present: Yes

Parking: 18 Midland St,
Worcester, MA 01602

Square Footage: 500

Managed by: Worcester Public
Schools

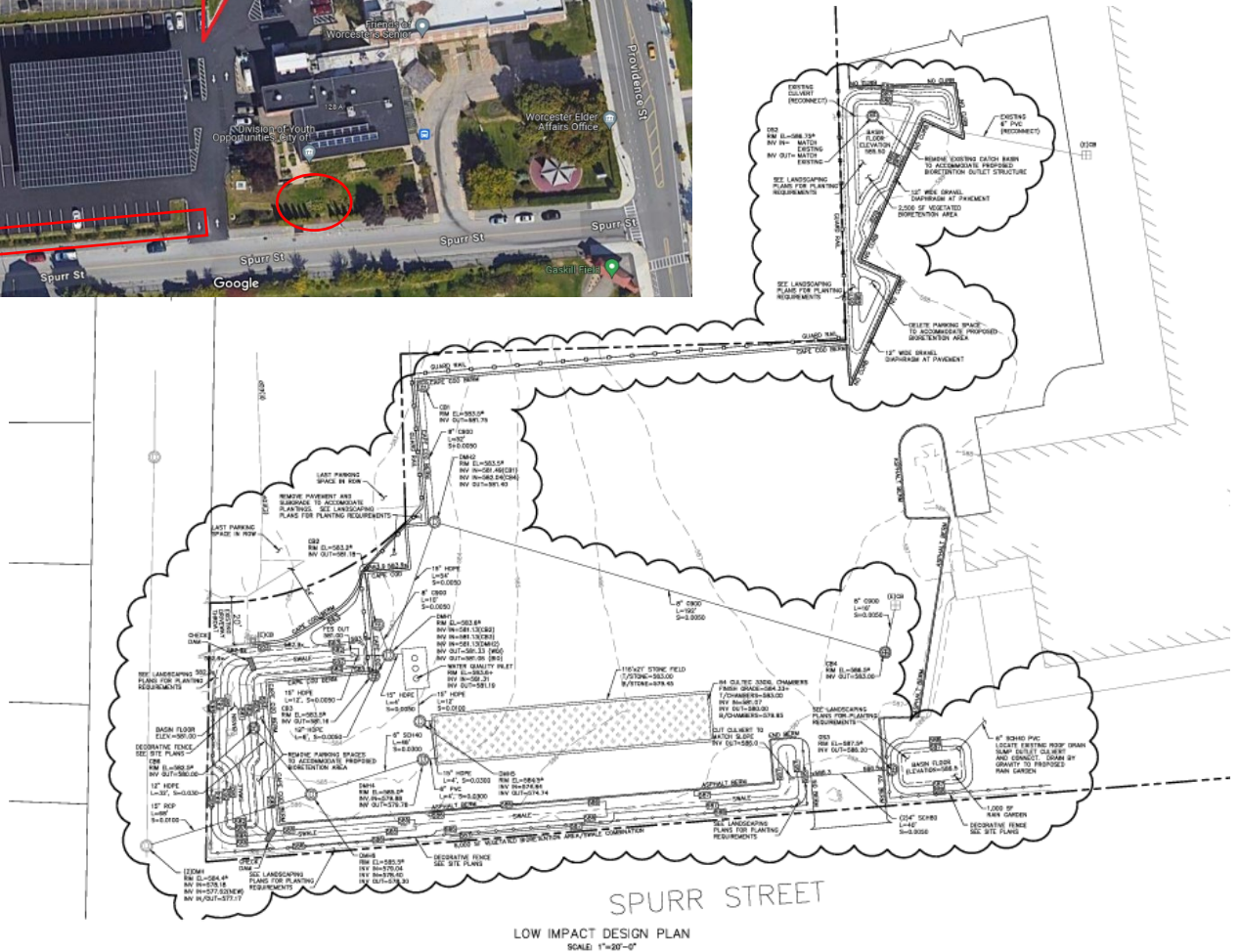
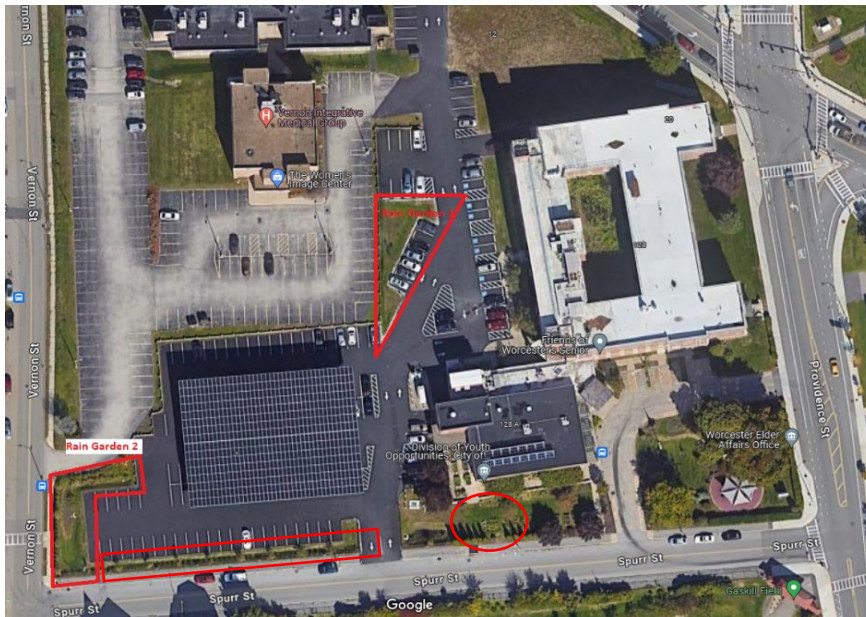
Description: There is a signed
500 SF rain garden at the corner
of Huntley Street and Midland
Street. The gutters of the building
drain into the rain garden, and it
looks like some of the plants have
died. You can see where the water
makes it's way through the
garden.



8. Senior Center – Rain Gardens and Bioswales

There are a series of green and grey infrastructure projects around the Worcester Senior Center. They were installed with funding from a Municipal Vulnerability Preparedness Grant in 2020. The network includes multiple rain gardens, a large bioswale, and an underground storage tank. (See Low Impact Design Plan, and matching google map below)

Through the years, the green infrastructure projects have been improperly managed (e.g. landscapers have cut them back too much, grading issues created draining problems), which has led to the death of many of the plants in the rain gardens and bioswales.



GI Network Latitude/Longitudes:

- 1) Rain Garden (central parking lot): 42.248399, -71.793602
- 2) Rain Garden (bottom left corner): 42.247700, -71.794567
- 3) Bioswale (along Spurr St): 42.247603, -71.794203
- 4) Rain Garden (by Spurr St): 42.247691, -71.793228

Signage Present: Yes, there are signs by the green infrastructure closest to the Senior Center and the infrastructure in the bottom left corner of the parking lot.

Parking: 128 Providence Drive, Worcester, MA, 01604

Managed by: Senior Center/ Public Facilities

Description: A 2000 SF rain garden was installed behind the Senior Center in 2020. This rain garden is located more centrally in the parking lot. Most of the plants have been removed from the basin which once held the thriving rain garden. It looks as though the basin may have been repurposed by Senior Center Users – there were prayer flags and newly sprouted plants in the depression. There is a volunteer at the Senior Center who has tried replanting various plants in this bed.

A 3200 SF rain garden was installed behind at the left edge of the Senior Center parking lot in 2020. This rain garden is located at the corner of Spurr Street and Vernon Street and forms an L shape. Most of the water loving grasses have been removed from the rain garden, and it seems to collect a decent amount of trash. The City worked with the REC, ReWild Habitat Gardens LLC, and volunteers to replant the lower rain garden in the Summer 2024.



There is a long bioswale along the fencing by Spurr Street. The bioswale has a depression of a foot or so. There are few plants currently living in the Bioswale.

There is a rain garden along the side of the Senior Center which captures the water that drains from the roof.

< Rain Garden by Central Parking Lot



^ Rain Garden in the bottom left corner of parking lot ^



< Bioswale (2020)