

PURCHASING DIVISION
CITY OF WORCESTER
MASSACHUSETTS 01608-1895
455 MAIN STREET
ROOM 201 - CITY HALL
PHONE (508) 799-1220
FAX (508) 799-1203

REQUEST FOR QUOTATION

BID NO.: 8277-M5
DATE: August 28, 2024
BID DUE: For this bid to be considered, one fully completed copy of this form must be returned to us by: 4:00 PM, September 12, 2024
(EMAIL COPIES ARE ACCEPTABLE)
EMAIL: mcdonalds@worcesterma.gov
CITY OF WORCESTER Christopher J. Gagliastro, MCPPO Purchasing Agent
BUYER: Stephen R. McDonald

AN EQUAL OPPORTUNITY AFFIRMATIVE ACTION EMPLOYER

Bidders must state and identify the product offered, such as manufacturer's name, trade name, brand name and quality next to each item. **WE MUST KNOW WHAT HAS BEEN OFFERED.** By virtue of the offeror's signature below, proposer certifies that the product (s) or service (s) bid are in compliance with the City's terms, conditions and specifications in all aspects.

BIDDER TO COMPLETE ITEMS BELOW

Item No.	Quantity	DESCRIPTION and/or SPECIFICATIONS	Mfg	Model #	Unit Price	Total Price
		Furnish and Deliver Flushing Equipment (Kupferle) as per the attached requirements and specifications of the City of Worcester Department of Public Works & Parks. Quotes may be emailed to mcdonalds@worcesterma.gov Please direct questions pertaining to this bid to Stephen McDonald via e-mail at mcdonalds@worcesterma.gov				See pricing page

ABOVE ARE FOR (DEPT.) <u>Department of Public Works & Parks</u>	BIDDER _____
DELIVERY TO BE F.O.B. (LOCATION): 18 East Worcester Street Worcester, MA 01604 DELIVER BETWEEN 9:00AM and 3:00PM LOCAL TIME	ADDRESS _____
DELIVERY IS REQUIRED BY: (DATE) <u>30 DAY ARO</u>	CITY/TOWN _____
BIDDER TO SPECIFY: DELIVERY WITHIN _____ DAYS ARO	STATE _____ ZIP _____
PROMPT PAY DISCOUNT: _____ % 30 DAYS, NET 45 DAYS	AUTHORIZED SIGNATURE _____
	TITLE _____ TEL.: _____
	DATE: _____ EMAIL: _____

CONDITIONS

1. Prompt pay discounts will be considered when determining the low bid except when discounts are for a period of less than 30 days. In this event discounts will not be taken into consideration when determining low bid.
2. Time, in connection with discount offered, will be computed from date of completion and/or delivery and acceptance at destination, or from date correct bill or voucher properly certified by the contractor is received if the latter date is later than the date of completion and acceptance and/or delivery and acceptance.
3. As the City of Worcester is exempt from the payment of Federal Excise Taxes, and Massachusetts Sales Tax, prices quoted herein are not to include these taxes.
4. **All prices are to be firm F.O.B. Delivered Destination, City of Worcester, Massachusetts, unless otherwise indicated by the City.** Time reserved for award is ninety days.
5. In case of error in the extension prices quoted herein, the unit price will govern.
6. It is understood and agreed that should any price reductions occur between the opening of this bid and completion of any delivery of any order, the benefit of all such reductions will be extended to the City.
7. The City of Worcester reserves the right to reject any and all bids, wholly or in part, and to make awards in a manner deemed in the best interest of the City.
8. Awards will be made to the bidder quoting the lowest net price in accordance with specifications.
9. The bidder to who a contract is awarded guarantees to the City of Worcester all equipment, materials and/or workmanship for a period of one (1) year after final inspection and acceptance and shall replace promptly any defective equipment, materials and/or workmanship required without additional cost to the City.
10. It is understood and agreed that in the event of failure on the part of the bidder to indicate date of delivery and/or completion, delivery and/or completion will be made within twelve (12) days from date of purchase.
11. The Bidder must certify that no official or employee of the City of Worcester, Massachusetts is pecuniarily interested in this quotation or in the contract which the bidder offers to execute or in expected profits to arise therefrom, unless there has been compliance with provisions of G.L. C.43 Sec. 27, and that this quotation is made in good faith without fraud or collusion or connection with any other person submitting a quotation.
12. This inquiry implies no obligation on the part of the buyer, City of Worcester, Mass. Quotations will not be considered unless returned on this form. Your proposal should be forwarded to the office of the Purchasing Division, City of Worcester in a sealed envelope, plainly marked: "Quotation on (item requested)" - also, please show Bid Number.
13. It is understood and agreed that it shall be a material breach of any contract resulting from this bid for the Contractor to engage in any practice which shall violate any provisions of Massachusetts General Laws, Chapter 151B, relative to discrimination in hiring, discharge, compensation, or terms, conditions or privileges of employment because of race, color, religious creed, national origin, sex, age or ancestry.

CERTIFICATE OF GOOD FAITH FORM AS REQUIRED BY M.G.L. c. 30B

UNDER MASSACHUSETTS GENERAL LAWS, CHAPTER 30B: SECTION 10, THE FOLLOWING
CERTIFICATION MUST BE PROVIDED:

Section 10. A person submitting a bid or a proposal for the procurement or disposal of supplies, or services to any governmental body shall certify in writing, on the bid or proposal, as follows:

" The undersigned certifies under penalties of perjury that this bid or proposal has been made and submitted in good faith and without collusion or fraud with any other person. As used in this certification, the word "person" shall mean any natural person, business, partnership, corporation, union, committee, club, or other organization, entity, or group of individuals."

(Please Print)

Name of Person Signing Bid

Signature of Person Signing Bid

Company

No award will be made without vendor certification of the above.

Proprietary Bid Notice: This is a proprietary specification. Only the models listed shall be acceptable. DPW&P currently operates the same equipment city-wide. By maintaining model consistency, savings are realized on parts, maintenance and training. Therefore, no substitutions are allowed.

Please direct ALL questions pertaining to this bid to Stephen McDonald via e-mail at mcdonalds@worcesterma.gov

SPECIFICATION PAGE – Flushing Equipment / DPW&P
Bid 8277-M5

The City of Worcester is seeking to purchase various Kupferle manufactured products. These products include: automatic flushing devices for potable water mains, sample stations for water quality sampling program, and electric hand pumps to drain and operate sample stations. The flushing devices shall be used by DPW&P Water Operations to flush water mains and services to raise chlorine residual levels and remove disinfection byproducts (DBP's). The water quality monitoring sample stations shall be used by DPW&P Water Operations to collect water quality samples as required by the drinking water regulations. The flushing devices, sample stations, and electric hand pumps shall meet the specific requirements as follows:

1. **Kupferle Eclipse #9800 Automatic Flushing Station**

- Device shall have a 5 foot depth of bury.
- Device shall be a 2 inch permanent automatic flushing station.
- Device shall be housed in an **above grade** UV resistant enclosure.
- Unit model # shall be 9800 as manufactured by Kupferle Foundry Company.

2. **Kupferle Eclipse #9700 Portable Automatic Flushing Device**

- Each aluminum enclosure shall be powder-coated and the color shall be "YELLOW".
- Unit model # shall be 9700 as manufactured by Kupferle Foundry Company.

3. **Kupferle Eclipse #88-SS-R**

- Device shall have a 5 foot depth of bury.

4. **Kupferle Electric Hand Pump EEP**

- Unit model # shall be EEP

5. Vendor shall be authorized sale and service representatives with the ability to supply replacement parts as needed.

6. A complete illustrated part/price list and instruction/maintenance manual shall be included with each device upon delivery.

7. All bids shall be accompanied by descriptive/illustrated brochures for all items as a condition of bid.

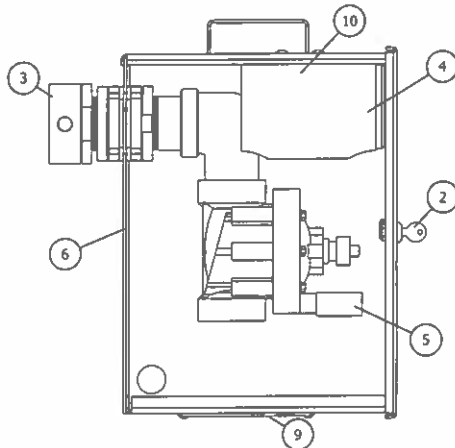
8. Deliveries shall be F.O.B. Worcester DPW&P Water Operations, 18 East Worcester Street, Worcester, MA 01604, attention: Patrick Cunningham between 9:00 A.M. and 3:00 P.M. weekdays within 30 days of award.

PRICING

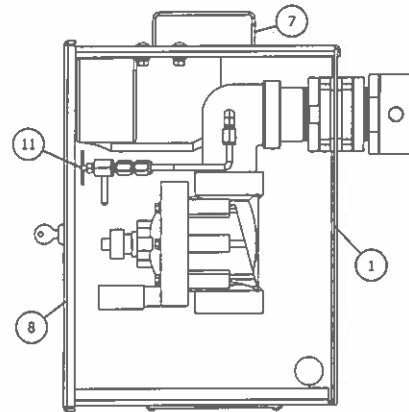
ITEM	DESCRIPTION	QUANTITY	UNIT COST	EXTENDED COST
1	Kupferle Eclipse #9800 Permanent Autoflusher (above grade)	1	\$	\$
2	Kupferle Eclipse #9700 Portable Automatic Flushing Device	2	\$	\$
3	Kupferle Eclipse #88-SS-R	18	\$	\$
4	Kupferle Electric Hand Pump EEP	2	\$	\$
TOTAL:				\$

NAME OF BIDDER: _____

#9700 PORTABLE AUTOMATIC FLUSHING DEVICE SPEC SHEET

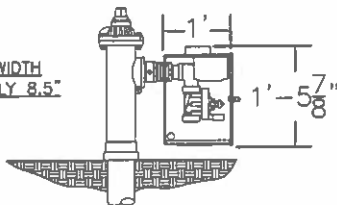


1 STANDARD FLUSHER
Scale: 1-1/2"=1'-0"

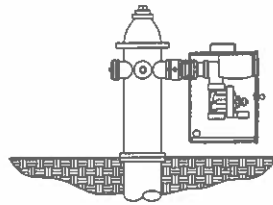


2 FLUSHER WITH SAMPLING
Scale: 1-1/2"=1'-0"

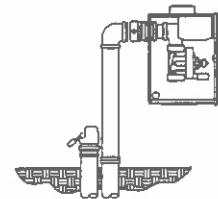
ENCLOSURE WIDTH
APPROXIMATELY 8.5"



A #2 POST HYDRANT
Scale: 3/8"=1'-0"



B FIRE HYDRANT
Scale: 3/8"=1'-0"



C #77 BLOW-OFF
Scale: 3/8"=1'-0"

A 2-1/2" NST swivel connection shall lead into a 2" automatic flushing valve. The automatic flushing valve shall control the flow of water through the hydrant and its diaphragm with the extension and retraction of a DC latching solenoid and have a 220 PSI rating. Each unit shall be furnished with a stand-alone valve controller. The valve controller will not require a second hand-held device for programming. Controller must have minimum of 12 possible flushing cycles per day. Controller shall be submersible to 12 feet, operate with a 9 volt battery, and have resin-sealed electrical components. The solenoid shall have no loose parts when removed from the valve.

All components shall be housed in a lockable powder coated (Specify RED or YELLOW upon ordering) aluminum enclosure, with 3/4" perforations in the floor to diffuse discharged water.

A removable floor plate shall allow access to a 2" FIP outlet as needed.

Optional collar lock shall cover the 2-1/2" swivel to prevent any tampering with or removal of the device.

Optional directional diffuser shall be available be able to be installed via the removable access plate to allow controlled directional flow of discharged water.

Optional dechlorination tablet holder shall sit inside of the enclosure in the path of the discharged water.

Unit model # shall be 9700 as manufactured by Kupferle Foundry Company, St. Louis MO, or approved equal.

ITEM	ITEM / DESCRIPTION	NOTES
1	POWDER COATED ALUMINUM ENCLOSURE	
2	KEY & LOCK	
3	2-1/2" NST BRASS SWIVEL	
4	VALVE CONTROLLER	
5	DC LATCHING SOLENOID	
6	2" PGV VALVE	
7	HANDLE	
8	ACCESS DOOR	
9	REMOVABLE PLATE	
10	STANDARD CONTROLLER HOLDER	
11	SAMPLING VALVE	OPTIONAL
12	WATER DIFFUSER FLOOR	NOT SHOWN

#9700 AUTOMATIC FLUSHING
DEVICE TO BE INSTALLED AT
THE FOLLOWING LOCATIONS:

DD/MM/YY	ISSUED FOR REFERENCE
DATE	STATUS / REVISION

PATENTED

9700 AUTOMATIC FLUSHER SPEC SHEET

	INITIALS	DATE
DRAWN	SMS	08/28/17
APPROVED	DCL	11/10/17
MODIFIED		

SCALE
VARIES

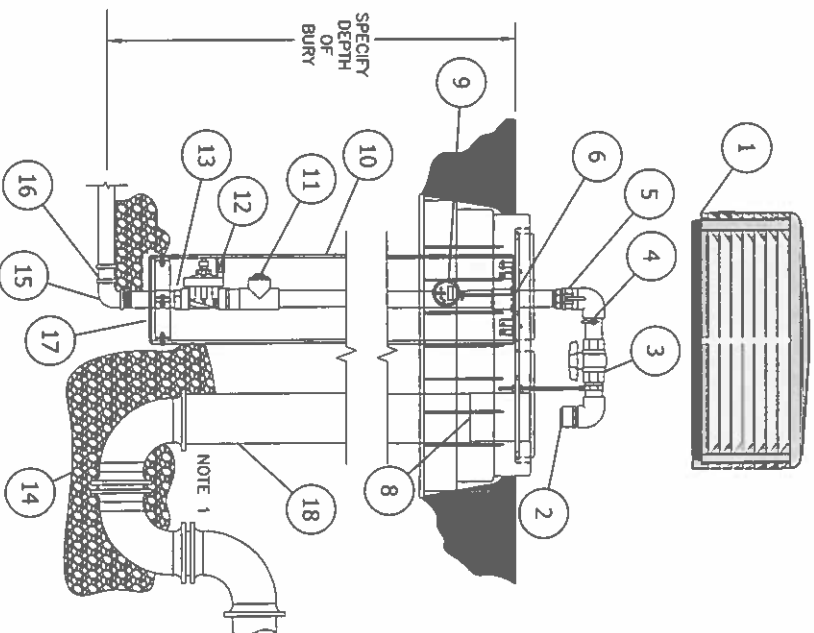


2511 NORTH 9TH STREET
ST. LOUIS, MO 63102
1-800-231-3990
FAX 314-231-2820
www.hydrants.com

SHEET 1 OF 1

#9800 AUTOMATIC FLUSHING DEVICE

Flushing device shall be installed in the following locations:



ITEM	ITEM / DESCRIPTION	OPTIONAL	BY OTHERS
1	UV RESISTANT LOCKABLE LID		
2	DIFFUSER / TRAP		
3	2" PVC BALL VALVE		
4	SAMPLING POINT		
5	2" STAINLESS STEEL QUICK DISCONNECT		
6	REMOVABLE ACCESS PLATE		
7	DECHLOR BASKET	X	
8	6" SEWER PIPE CONNECTION		
9	CONTROLLER		
10	SDR 35 PVC PIPE		
11	AUTOMATIC DRAIN		
12	2" AUTOMATIC VALVE		
13	0-RING CONNECTOR		
14	1" CLEAN ROCK		X
15	2" S.S. FIP INLET		X
16	2" MIP x COMPRESSION ADAPTER		X
17	DEBRIS PLATE		
18	6" PVC SEWER PIPE & P TRAP		X
19	SCHEDULE 80 PVC PIPE		

LAYOUT NOTES:

- 1.) KUPFERLE RECOMMENDS THE INSTALLATION OF A 6" DWV P TRAP

Automatic flushing device shall have a 2" stainless steel MIP inlet that will lead vertically to the bottom of a 2" automatic flushing valve. The flushing valve shall control the flow of water through the hydrant and its diaphragm with the extension and retraction of a DC latching solenoid and have a 220 PSI rating. Each unit shall be furnished with a stand-alone valve controller. The valve controller will not require a second hand-held device for programming. Controller must have minimum of 12 possible flushing cycles per day. Controller shall be submersible to 12 feet, operate with a 9 volt battery, and have resin-sealed electrical components. The solenoid shall have no loose parts when removed from the valve. Each unit shall have a all stainless steel sampling point. Removal of the 2" valve shall be possible via an o-ring connector located beneath the valve after the above ground disconnection of the stainless steel access plate. Valve assembly shall be housed in a PVC enclosure and each unit shall be self-draining, non-freezing. All above-ground components shall be contained within a UV-Resistant locking cover.

Unit model # shall be 9800 as manufactured by Kupferle Foundry Company, St. Louis MO (1-800-231-3990), or approved equal.

NOTE: Flush water lines free of debris before installation

DD/MM/YY	ISSUED FOR REFERENCE
DATE	STATUS / REVISION

SHEET 1 OF 1	SCALE: 1/2"=1'
9800 SPEC SHEET	DRAWN
	APPROVED
	MODIFIED

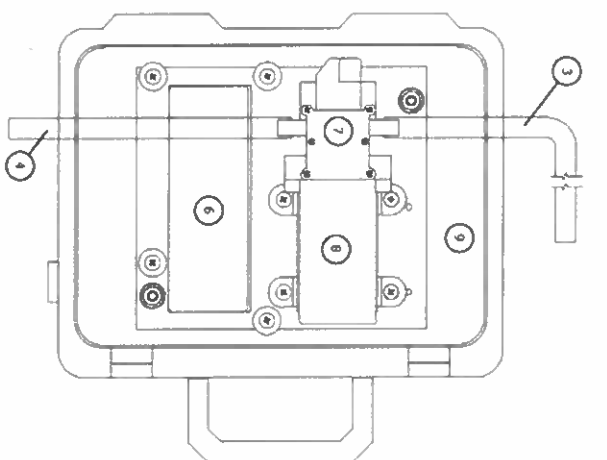
INITIALS	DATE
SMS	05/30/17
DCL	05/30/17
KW	09/23/22



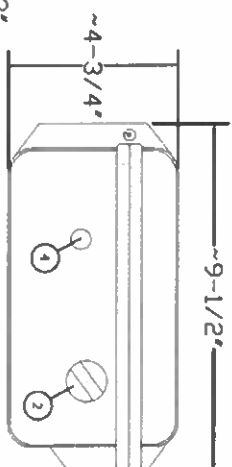
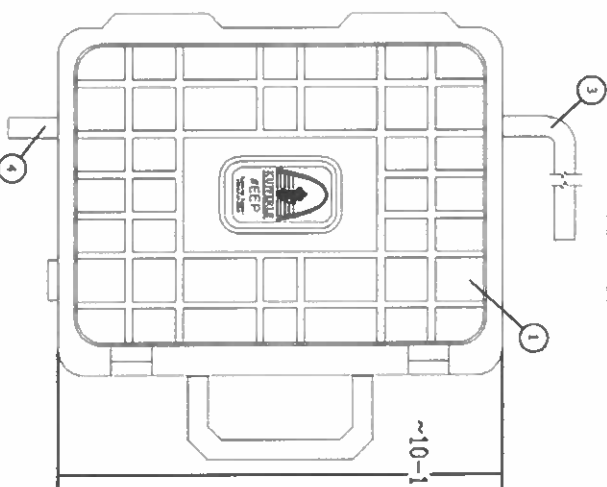
2511 NORTH 9TH STREET
ST. LOUIS, MO 63102
1-800-231-3990
FAX 314-231-2820
www.hydrants.com

KUPFERLE
Since 1857

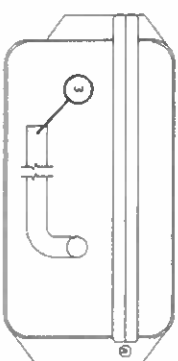
Electric Evacuation Pump
(EEP)



INTERNAL COMPONENTS



OUTLET / SWITCH SIDE



INLET SIDE

1 INTERNAL COMPONENT IS

Scale: 3" = 1'-0"

CLOSED CASE

Scale: 3" = 1'-0"

The Electric Evacuation Pump (EEP) was designed to increase efficiency of the evacuation water and/or other liquids in conditions where a hand bilge pump is troublesome, time-sensitive, or inadequate. The EEP provides users with a turn-key solution implementing pump technology into a compact handheld rugged portable case, all while remaining lightweight and battery powered. Additionally, the EEP provides the ability to draw water in no or low pressure conditions, assisting in not only for evacuation purposes but sampling as well.

The EEP shall comprise of a lightweight, but rugged, plastic case with a handle for easy transportation. Inside the case lies the power source, a rechargeable 12V NiCd battery pack, and the pump. The pump shall be self-priming and capable of pumping up to 4.5 liters per minute. The battery shall provide approximately 1.25 hours of runtime and will need to be charged after use. Wall charger shall be included and be able to be stored inside of the case.

Unit model # shall be EEP as manufactured by Kupferle Foundry Company, St. Louis MO, or approved equal.

ITEM	DESCRIPTION	NOTES
1	HARD SHELL CASE	
2	ON/OFF SWITCH	
3	1/2" O.D. INLET	3/8" I.D.
4	1/2" O.D. OUTLET	3/8" I.D.
5	3/8" O.D. INLET ADAPTER	NOT SHOWN 1/4" I.D.
6	NICA BATTERY	
7	FUSE	NOT SHOWN
8	PUMP	
9	WALL CHARGER	NOT SHOWN

DD/MM/YY	ISSUED FOR
DATE	STATUS / REVISION

EEP ELECTRIC EVACUATION PUMP

	INITIALS	DATE
DRAWN	K JV	3/16/2001
APPROVED	DCL	3/18/2001
MODIFIED		



KUPFERLE
Since 1857

1-800-231-3990
FAX 314-231-2820
www.hydrants.com



2511 NORTH 9TH STREET
ST. LOUIS, MO 63102
1-800-231-3990
FAX 314-231-2820
www.hydrants.com

GENERAL HYDRAULIC SPECIFICATIONS	
MAXIMUM FLOW RATE	20 mg
STATION MATERIALS	303, 316, & 316L STAINLESS STEEL
ENCLOSURE MATERIAL	CAST AL 355 ALUMINUM
ENCLOSURE COATING	DAKEL 316/3003
SEA-ROVING MATERIAL	BLACK 4, 500 M/INCH
DEPTH OF BATTERY	3.5 INCHES + 6 INCHES/INCHES
WEIGHT	700 LBS



A detailed cross-sectional diagram of a mechanical assembly, possibly a valve or actuator. The assembly is shown in a cutaway view, revealing internal components. A central rod or piston extends from the left, passing through a series of seals and guides. The main body of the assembly is a complex, multi-part housing with various internal chambers and passages. The diagram is rendered in a technical, line-art style with hatching to indicate different materials or sections.



SAMPLING STATION SHALL BE _____, BURY, WITH A 3/4" FIP INLET AND 3/8" UNTHREADED BLOW OFF AND SAMPLING BIBB. STATION SHALL BE ENCLOSED IN A LOCKABLE POWDER COATED ALUMINUM BOX WITH HINGED OPENING.

WHEN OPEN, THE STATION SHALL REQUIRE NO KEY FOR OPERATION, AND ALL WATER FLOW SHALL PASS THROUGH AN ALL STAINLESS STEEL WATERWAY. SEAT RUBBER AND ALL OPERATIONAL COMPONENTS SHALL BE SERVICEABLE / REPLACEABLE FROM ABOVE GROUND WITH NO JACKING OR EXCAVATION NEEDED.

A SECONDARY VALVE (STAINLESS STEEL PETCOCK) SHALL BE LOCATED ON THE EVACUATION LINE, INDEPENDENT OF THE SAMPLING SECONDARY VALVE. THE VALVE SHALL BE OPERATED BY THE OPERATOR OF THE STATION, VIA PUMP OR COMPRESSED AIR, TO PREVENT FREEZING.

THE STATION UTILIZES A PISTON DESIGN TO ALLOW FOR THE ENTIRE STATION TO BE REMOVED IN CASE OF FREEZING IN EXTREME COLD CONDITIONS.

THE STATION SHALL BE MODEL #88-SSR AS MANUFACTURED BY KUPFERLE WATER SOLUTIONS, ST. LOUIS MO. 63102 OR APPROVED EQUAL.

STATUS / REVISION

INITIALS		DATE
DRAWN	ADC	8/23/24
APPROVED	KJV	8/23/24
MODIFIED		
SHEET SIZE		SCALE
B (11x17)		VARIABLES



KUPFERLE
WAITE & ASSOCIATES

2511 NORTH 9TH STREET
ST. LOUIS, MO 63102
1-800-231-3990
FAX 314-231-2820
www.hydrants.com

SHEET 1 OF 1