

CITY OF WORCESTER, MASSACHUSETTS

Shrewsbury Street Sewer Rehabilitation Sewer Rehabilitation Project

Contract S24-1-ARPA

Bid No. 8180-W4

ADDENDUM NO. 5

.....

To be considered as part of the contract drawings and specifications for the Shrewsbury Street Sewer Rehabilitation Sewer Rehabilitation Project, dated April 2024:

QUESTIONS

Q1. Please explain how to read the flow information provided for the Lake Ave Pump Station. What do "Value" and "Quality" mean?

A1. **Quality is related to the signal/callout. It represents the signal strength or fidelity. Value is the level/rate for the data that is called out in the first column. The first column of the data changes as it moves further down the table –**

1. **Wet well Level**
2. **Force Main 1 Flow Rate**
3. **Force Main 2 Flow Rate**
4. **Status for each pump (Pump 1 to 4)**
 - a. **0 = off**
 - b. **1 = lead on**
 - c. **2 = lag on**

Additional record drawings showing the size of the wet well are included in Attachment A.

It should be noted that the Lake Ave Pump Station discharges approximately 3 to 6 MGD of flow in average with peak discharge at approximately 14 MGD.

Q2. Will the Owner please confirm the manhole depths for the following structures?

- SS07190
- SS02316
- SS02074

A2. **Manhole SS07190 and SS02316 are part of an overflow regulator structure. A record drawing showing the dimension of the structure is included in the Contract Drawing, sheet C503.**

The depth of Manhole SS02074 is approximately 14.4 feet.

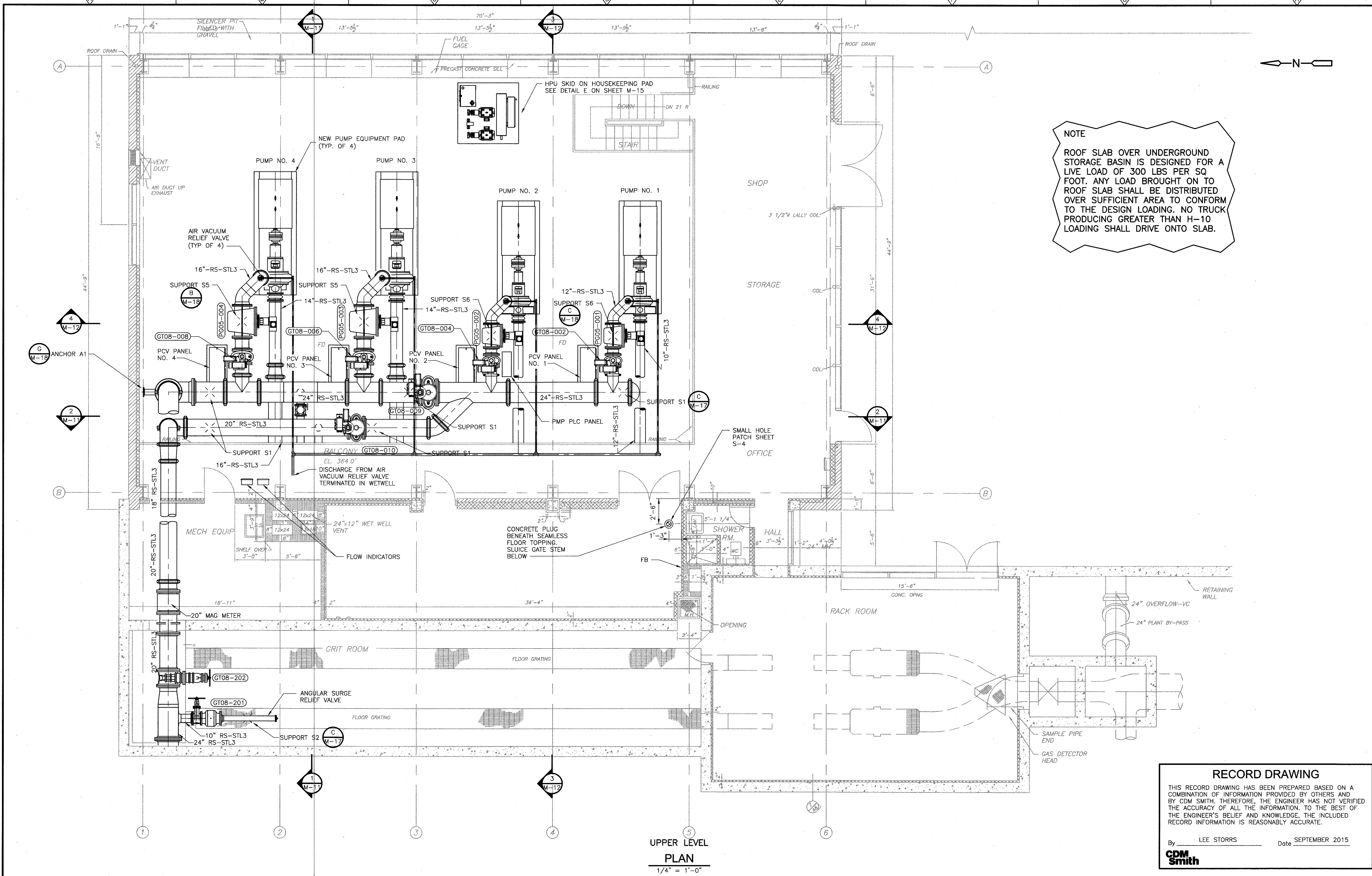
Q3. Could Liner Products be approved as a CIPP product?

A3. **Bids shall be based on the performance of the finished product as specified within the Contract Documents. The contractor may elect to submit alternative products for review as an approved equal in lieu of structural cured-in-place pipe (CIPP).**

END OF ADDENDUM NO. 5

Attachment A
Additional Record Drawings

XREFs: [CDMS-2436, APSWP100, X-MPSLUPR-2] Images: []
Last saved by: RV Time: 11/17/2015 12:36:01 PM
p:\x\acp\wp001\PM_XM1\0198\5503\05 Construction Services\18 Record Drawings\CADD\05 Process Mechanical\W-9.dwg
© CDM Smith. All rights reserved. CDM Smith, its logo, and the "CDM Smith" text are registered trademarks of CDM Smith.
REUSE OF DOCUMENTS: THESE DOCUMENTS AND DESIGNS PROVIDED BY PROFESSIONAL SERVICE, INCORPORATED HEREIN, ARE THE PROPERTY OF CDM SMITH, AND ARE NOT TO BE USED, IN WHOLE OR PART, FOR ANY OTHER PROJECT WITHOUT THE WRITTEN AUTHORIZATION OF CDM SMITH.



NOTE
ROOF SLAB OVER UNDERGROUND STORAGE BASIN IS DESIGNED FOR A LIVE LOAD OF 300 LBS PER SQ FOOT. ANY LOAD BROUGHT ON TO ROOF SLAB SHALL BE DISTRIBUTED OVER SUFFICIENT AREA TO CONFORM TO THE DESIGN LOADING. NO TRUCK PRODUCING GREATER THAN H-10 LOADING SHALL DRIVE ONTO SLAB.

RECORD DRAWING
THIS RECORD DRAWING HAS BEEN PREPARED BASED ON A COMBINATION OF INFORMATION PROVIDED BY OTHERS AND BY CDM SMITH. THEREFORE, THE ENGINEER HAS NOT VERIFIED THE ACCURACY OF ALL THE INFORMATION. TO THE BEST OF THE ENGINEER'S BELIEF AND KNOWLEDGE, THE INCLUDED RECORD INFORMATION IS REASONABLY ACCURATE.
By LEE STORRS Date SEPTEMBER 2015
CDM Smith

REV. NO.	DATE	DRWN	CHKD	REMARKS
1	9/15	KG	ELS	REVISED FOR RECORD

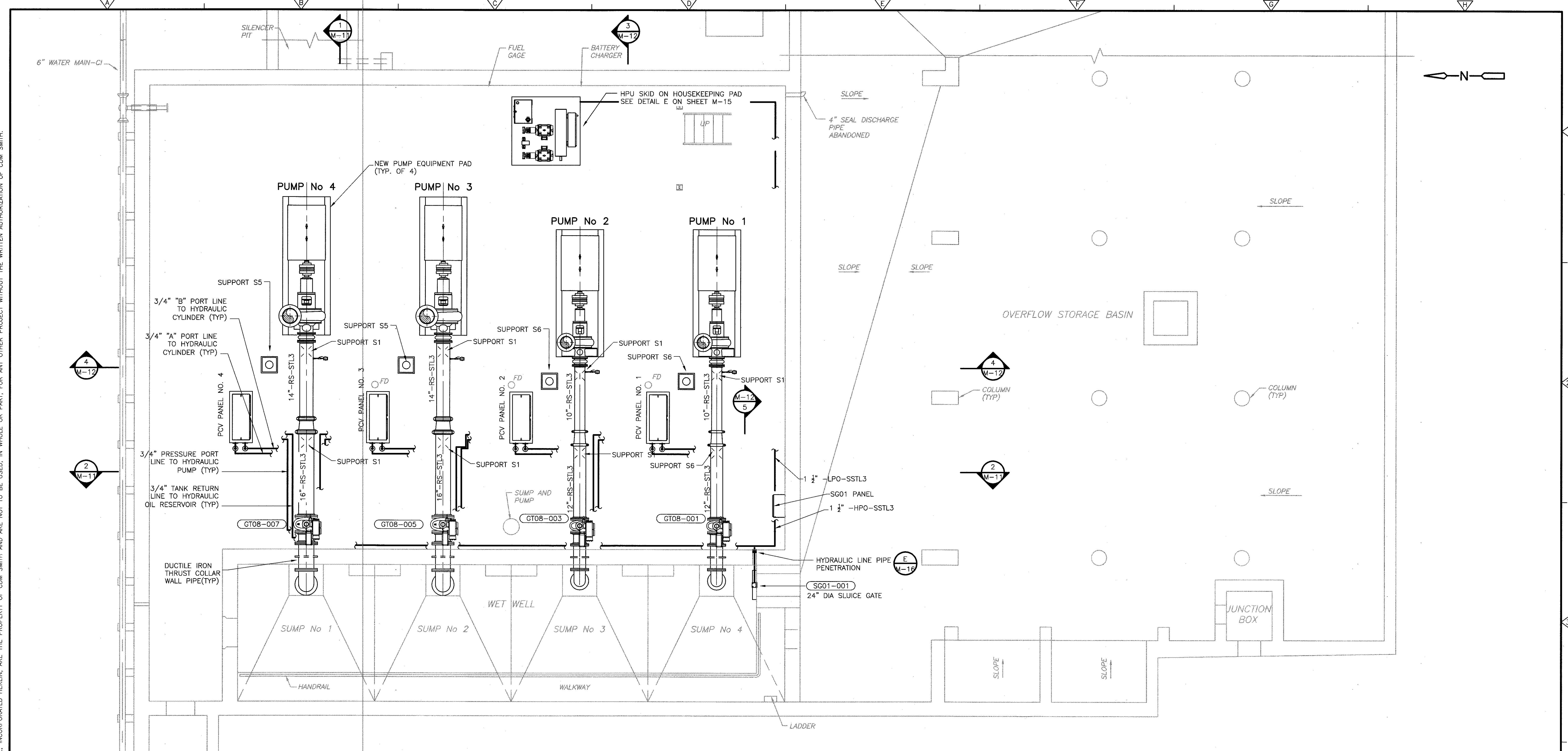
DESIGNED BY: E. GLOMSKI
DRAWN BY: H. DAVIS
SHEET CHK'D BY: E. GLOMSKI
CROSS CHK'D BY: N. HAMPTON
APPROVED BY: N. HAMPTON
DATE: JULY 2012

CDM Smith
50 Hampshire Street
Cambridge, MA 02139
Tel: (617) 452-6000

CITY OF WORCESTER, MASSACHUSETTS
DEPARTMENT OF PUBLIC WORKS & PARKS
**LAKE AVENUE WASTEWATER PUMPING STATION
CAPACITY UPGRADE & REHABILITATION PROJECT**

UPPER MECHANICAL PIPING PLAN
PROJECT NO. 0198-65037
FILE NAME: M-9
SHEET NO. **M-9**
0198-76679

XREFs: [X-MPSFLOW-2, X-MPSFLOW-PLAN, CDMs_2436] Images: []
Last saved by: KABILKUMAR Time: 9/26/2015 3:12:53 PM
p:\w\dcopwapp\pw\m1\0198\65037\05 Construction Services\18 Record Drawings\CADD\05 Process Mechanical\M-10.dwg
© CDM SMITH ALL RIGHTS RESERVED.
REUSE OF DOCUMENTS: THESE DOCUMENTS AND DESIGNS PROVIDED BY PROFESSIONAL SERVICE, INCORPORATED HEREIN, ARE THE PROPERTY OF CDM SMITH AND ARE NOT TO BE USED, IN WHOLE OR PART, FOR ANY OTHER PROJECT WITHOUT THE WRITTEN AUTHORIZATION OF CDM SMITH.



LOWER LEVEL
PLAN
1/4" = 1'-0"


NOTES:
1. HPU PIPING SHALL BE FIELD ROUTED BY CONTRACTOR.
HPU PRESSURE PORT LINE AND HPU TANK RETURN LINE
SHALL BE ROUTED AT A LOWER ELEVATION THAN THE
VALVE PANEL PORT "A" AND PORT "B" LINES
THROUGHOUT.

RECORD DRAWING

THIS RECORD DRAWING HAS BEEN PREPARED BASED ON A COMBINATION OF INFORMATION PROVIDED BY OTHERS AND BY CDM SMITH. THEREFORE, THE ENGINEER HAS NOT VERIFIED THE ACCURACY OF ALL THE INFORMATION. TO THE BEST OF THE ENGINEER'S BELIEF AND KNOWLEDGE, THE INCLUDED RECORD INFORMATION IS REASONABLY ACCURATE.

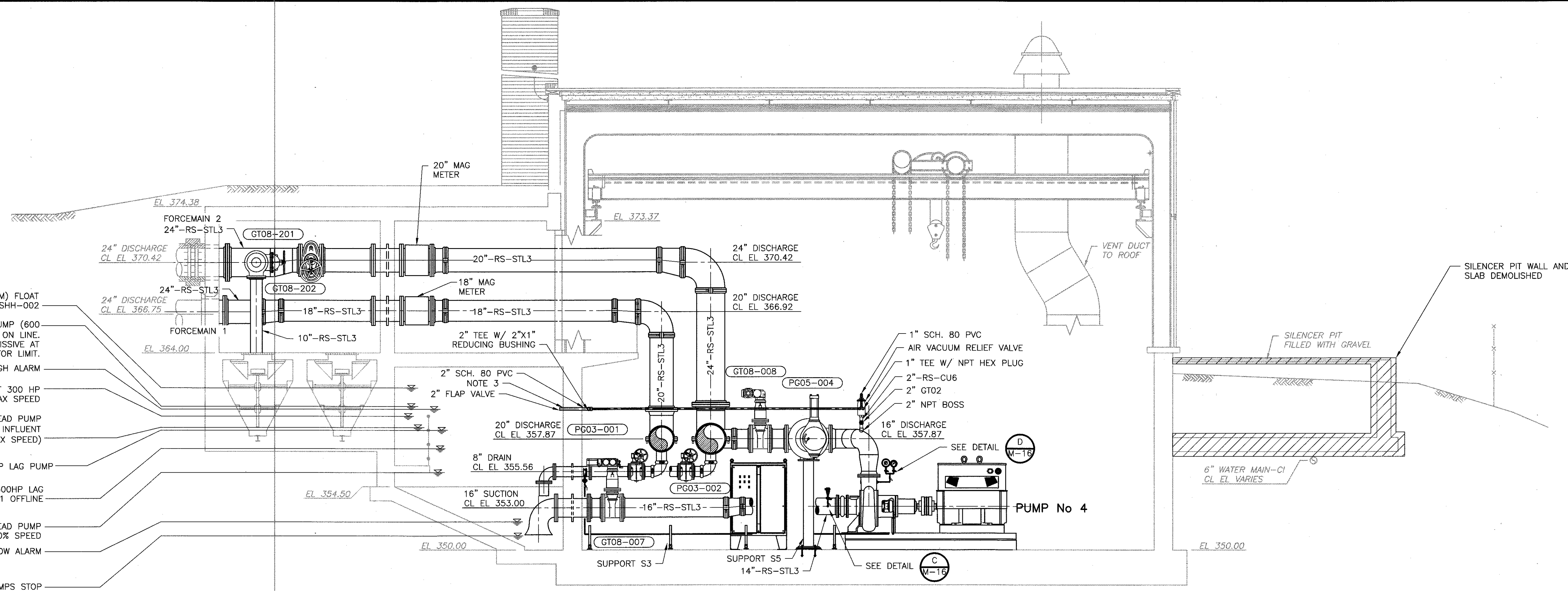
By LEE STORRS Date SEPTEMBER 2015

CDM Smith

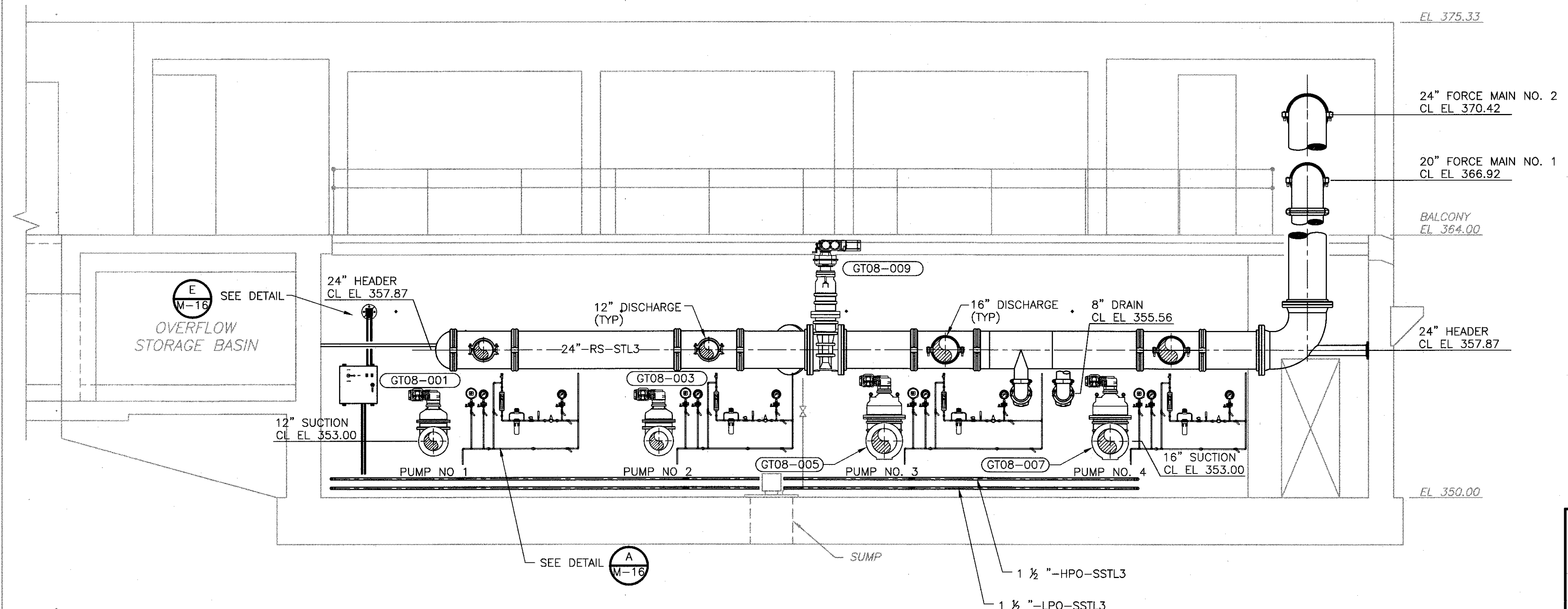
					DESIGNED BY: E. GLOMSKI	 50 Hampshire Street Cambridge, MA 02139 Tel: (617) 452-6000	CITY OF WORCESTER, MASSACHUSETTS DEPARTMENT OF PUBLIC WORKS & PARKS LAKE AVENUE WASTEWATER PUMPING STATION CAPACITY UPGRADE & REHABILITATION PROJECT	LOWER MECHANICAL PIPING PLAN	PROJECT NO. 0198-65037
					DRAWN BY: H. DAVIS				FILE NAME: M-10
					SHEET CHK'D BY: E. GLOMSKI				SHEET NO.
					CROSS CHK'D BY: N. HAMPTON				M-10
					APPROVED BY: N. HAMPTON				0198-76680
					DATE: JULY 2012				
1	9/15	KG	ELS	REVISED FOR RECORD					
REV. NO.	DATE	DRWN	CHKD	REMARKS					

XPREF: [X-MPSSCO2, CIMS, 2436] Images: []
Last saved by: RV Time: 11/17/2015 12:42:41 PM
pk:\decowap\1pw_xm10198\65037\05 Construction Services\18 Record Drawings\LAPS Record Drawings\CADD\05 Process Mechanical\M-11.dwg
© CDM SMITH ALL RIGHTS RESERVED. THESE DOCUMENTS AND DESIGNS PROVIDED BY PROFESSIONAL SERVICE, INCORPORATED HEREIN, ARE THE PROPERTY OF CDM SMITH AND ARE NOT TO BE USED, IN WHOLE OR PART, FOR ANY OTHER PROJECT WITHOUT THE WRITTEN AUTHORIZATION OF CDM SMITH.

- EL 361.5 HIGH HIGH (ALARM) FLOAT SWITCH LSHH-002
- EL 360.2 START SECOND LAG PUMP (600 HP), BRING FORCE MAIN NO. 1 ON LINE. PUMP SHALL START ON PERMISSIVE AT VALVE GT08-010 ACTUATOR LIMIT.
- EL 360.0 HIGH ALARM
- EL 359.5 START FIRST 300 HP LAG PUMP UP TO MAX SPEED
- EL 358.7 START 300 HP LEAD PUMP (LEVEL SET POINT TO MATCH INFLUENT FLOWS UP TO MAX SPEED)
- EL 358.5 STOP FIRST 300 HP LAG PUMP
- EL 357.2 STOP SECOND 600HP LAG PUMP, TAKE FORCE MAIN NO.1 OFFLINE
- EL 355.5 STOP 300 HP LEAD PUMP AT 80% SPEED
- EL 352.0 LOW ALARM
- EL 351.0 LL ALL PUMPS STOP (ALARM), FLOAT SWITCH LSL-002



SECTION 1
1/4" = 1'-0" M-9 & M-10



SECTION 2
1/4" = 1'-0" M-9 & M-10

RECORD DRAWING

THIS RECORD DRAWING HAS BEEN PREPARED BASED ON A COMBINATION OF INFORMATION PROVIDED BY OTHERS AND BY CDM SMITH. THEREFORE, THE ENGINEER HAS NOT VERIFIED THE ACCURACY OF ALL THE INFORMATION. TO THE BEST OF THE ENGINEER'S BELIEF AND KNOWLEDGE, THE INCLUDED RECORD INFORMATION IS REASONABLY ACCURATE.

By LEE STORRS Date SEPTEMBER 2015

CDM Smith

						DESIGNED BY: E. GLOMSKI
						DRAWN BY: H. DAVIS
						SHEET CHK'D BY: E. GLOMSKI
						CROSS CHK'D BY: N. HAMPTON
						APPROVED BY: N. HAMPTON
						DATE: JULY 2012
1	9/15	KG	ELS	REVISED FOR RECORD		
REV. NO.	DATE	DRWN	CHKD		REMARKS	

CDM Smith

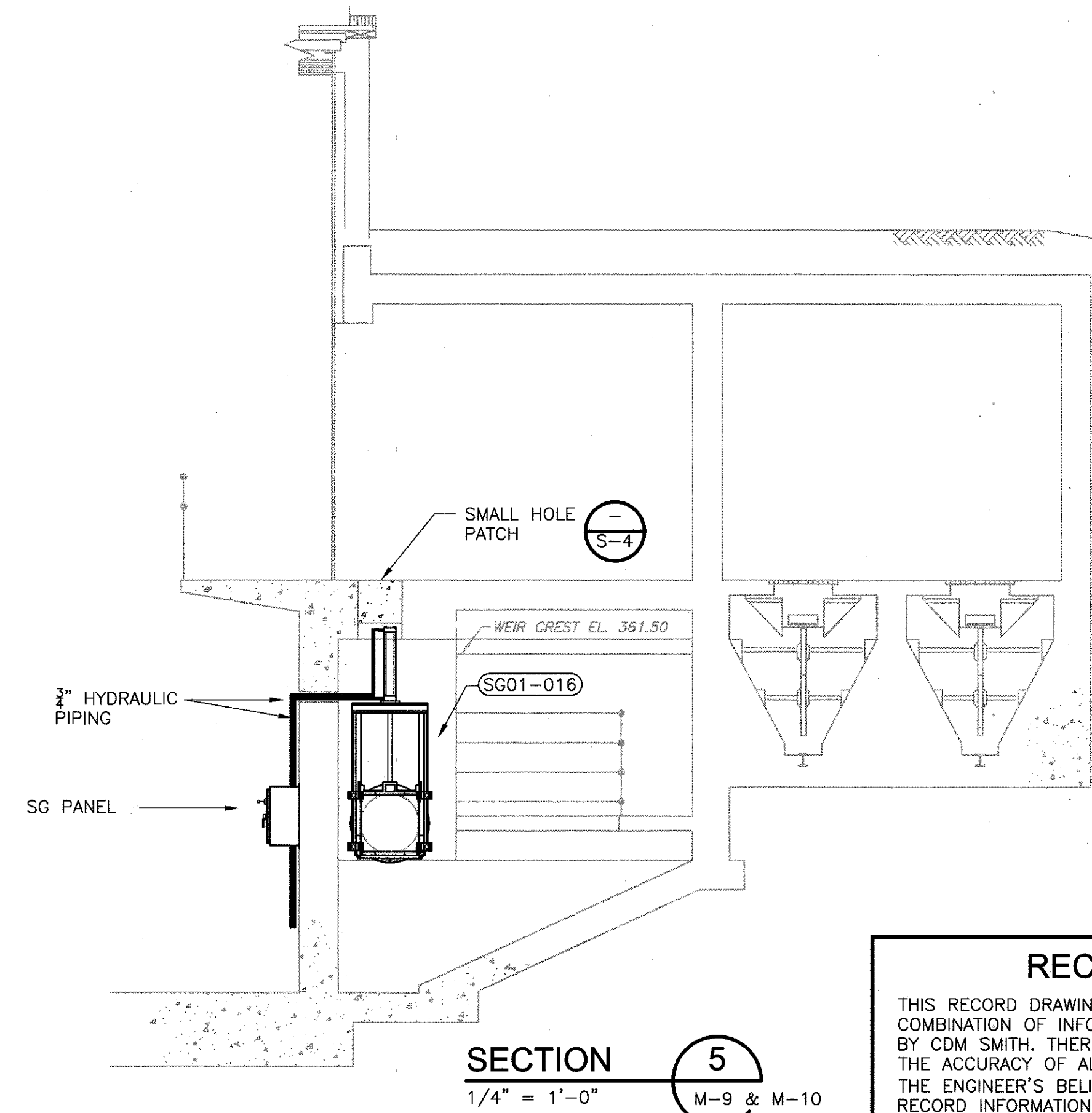
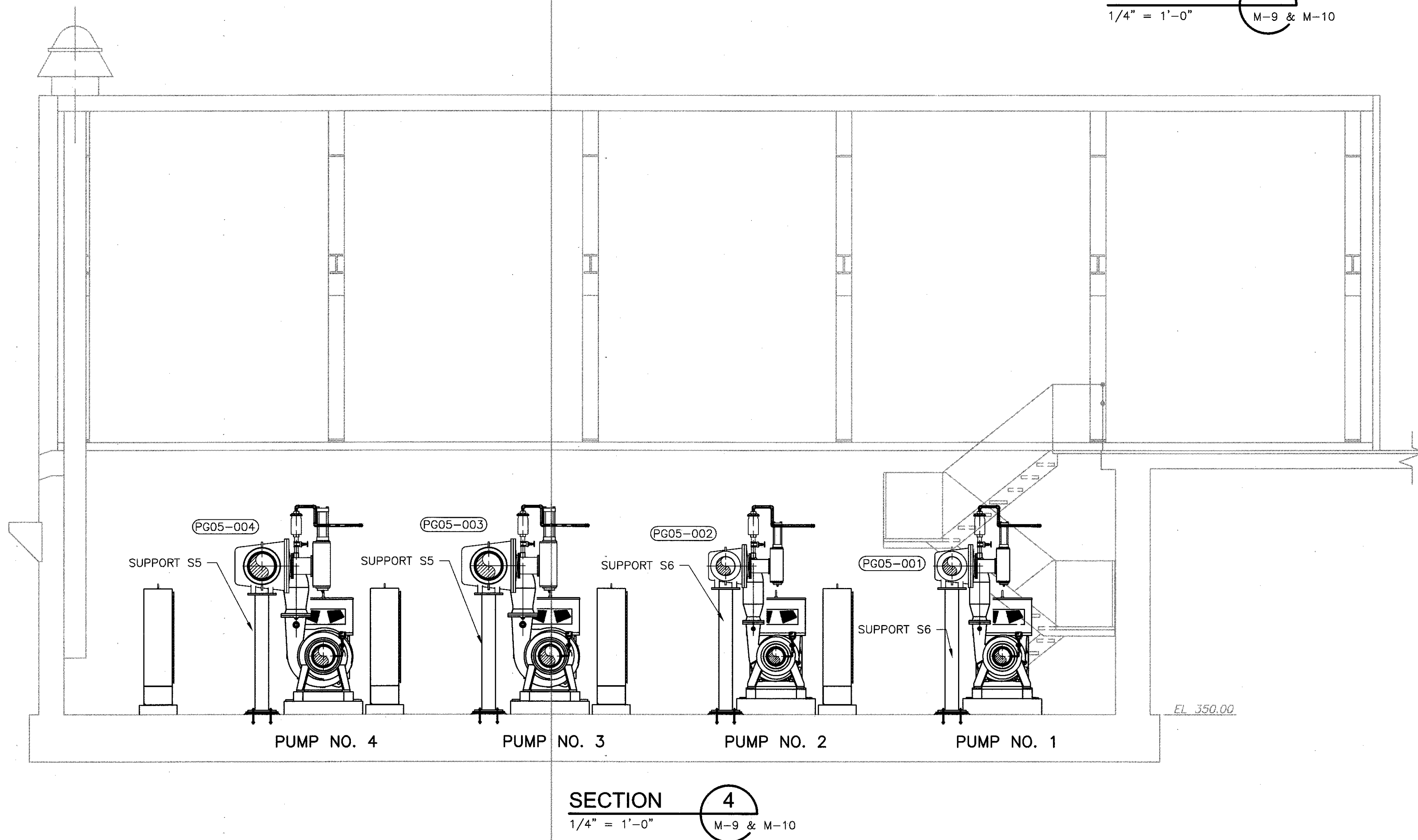
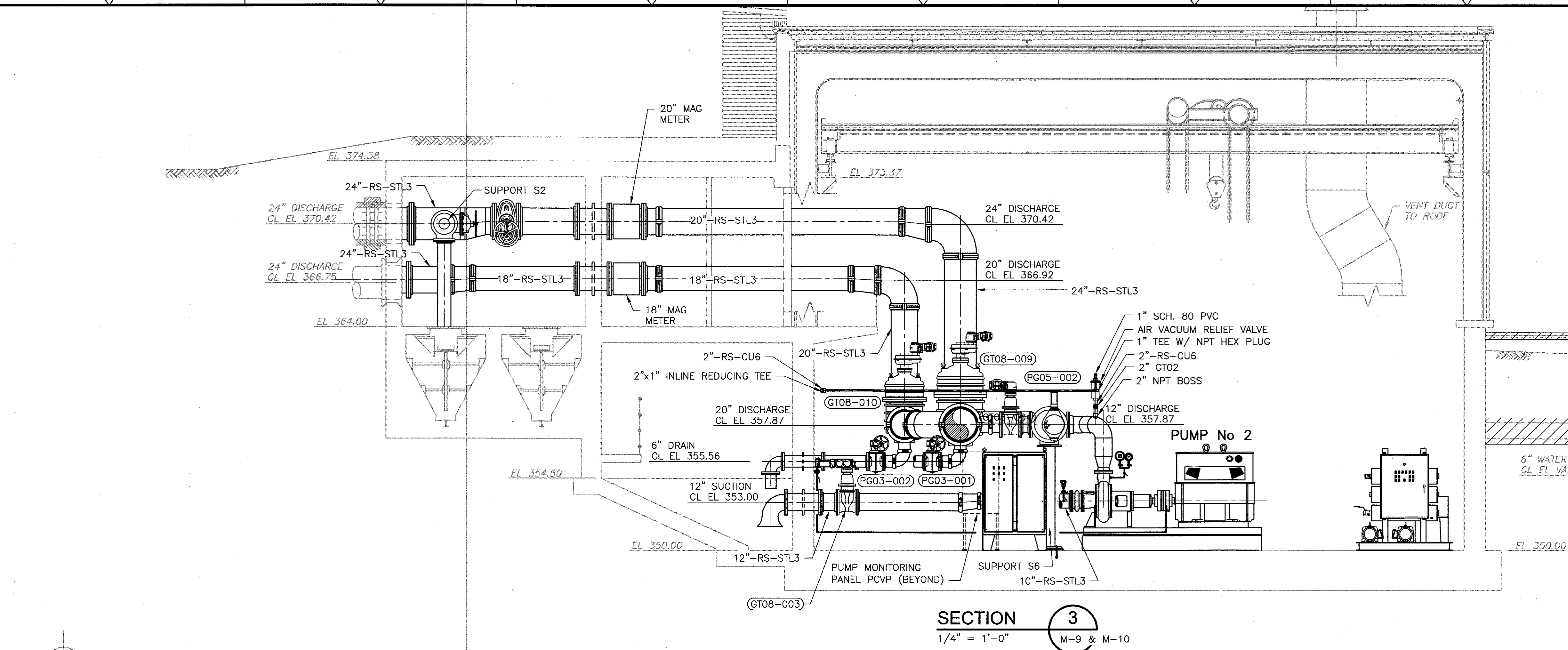
50 Hampshire Street
Cambridge, MA 02139
Tel: (617) 452-8000

CITY OF WORCESTER, MASSACHUSETTS
DEPARTMENT OF PUBLIC WORKS & PARKS
LAKE AVENUE WASTEWATER PUMPING STATION
CAPACITY UPGRADE & REHABILITATION PROJECT

PUMP ROOM AND WET WELL SECTIONS

PROJECT NO.	0198-65037
FILE NAME:	M-11
SHEET NO.	M-11
	0198-76681

XREFs: [X-MPSECO2, CDS_2436, CDM_8511] Images: []
 Last saved by: MAHADEVANM Time: 11/16/2015 3:33:20 PM
 pw:\deepap\pw_xm1\0198\65037\05 Construction Services\18 Record Drawings\LAPS Record Drawings\CADD\05 Process Mechanical\M-12.dwg
 © CDM SMITH ALL RIGHTS RESERVED.
 REUSE OF DOCUMENTS: THESE DOCUMENTS AND DESIGNS PROVIDED BY PROFESSIONAL SERVICE, INCORPORATED HEREIN, ARE THE PROPERTY OF CDM SMITH AND ARE NOT TO BE USED, IN WHOLE OR PART, FOR ANY OTHER PROJECT WITHOUT THE WRITTEN AUTHORIZATION OF CDM SMITH.



RECORD DRAWING
 THIS RECORD DRAWING HAS BEEN PREPARED BASED ON A COMBINATION OF INFORMATION PROVIDED BY OTHERS AND BY CDM SMITH. THEREFORE, THE ENGINEER HAS NOT VERIFIED THE ACCURACY OF ALL THE INFORMATION. TO THE BEST OF THE ENGINEER'S BELIEF AND KNOWLEDGE, THE INCLUDED RECORD INFORMATION IS REASONABLY ACCURATE.
 By LEE STORRS Date SEPTEMBER 2015
CDM Smith

REV. NO.	DATE	DRWN	CHKD	REMARKS
1	9/15	KG	ELS	REVISED FOR RECORD

DESIGNED BY: E. GLOMSKI
 DRAWN BY: H. DAVIS
 SHEET CHK'D BY: E. GLOMSKI
 CROSS CHK'D BY: N. HAMPTON
 APPROVED BY: N. HAMPTON
 DATE: JULY 2012

CDM Smith
 50 Hampshire Street
 Cambridge, MA 02139
 Tel: (617) 452-6000

CITY OF WORCESTER, MASSACHUSETTS
 DEPARTMENT OF PUBLIC WORKS & PARKS
 LAKE AVENUE WASTEWATER PUMPING STATION
 CAPACITY UPGRADE & REHABILITATION PROJECT

PUMP ROOM AND WET WELL SECTIONS

PROJECT NO. 0198-65037
 FILE NAME: M-12
 SHEET NO.
M-12
 0198-76682