



# The City of **WORCESTER**

Administration & Finance – Purchasing Division  
Christopher J. Gagliastro, MCPPO – Purchasing Director  
455 Main Street, Room 201, Worcester, MA 01608  
P | 508-799-1220  
[purchasing@worcesterma.gov](mailto:purchasing@worcesterma.gov)

July 17, 2023

To All Proposers:

Subject: **BID #: 8020-W4, Resurfacing Various Streets (M23-6) / DPWP**

## **ADDENDUM NO. 1**

To Whom It May Concern:

With reference to our proposal request relative to the above subject, please refer to the changes/modifications/clarifications to the original proposal request.

### **• PLEASE SEE ATTACHED GENERAL BID CLARIFICATION**

#### **CLARIFICATION FOR DATE OF COMPLETION:**

June 30th, 2024. Completion of the Work for this Contract shall be no later than 30 days after the date of substantial completion for any location.

#### **BID PRICE ADJUSTMENTS:**

This Contract contains a price adjustment for bituminous concrete mixtures. The base price for liquid asphalt on this project is \$662.50 per ton.

This Contract contains price adjustments for diesel fuel and gasoline. The base price for diesel fuel on this project is \$ 2.889 per gallon and for gasoline \$2.923 per gallon.

This Contract contains price adjustments for Portland cement. The base price for Portland cement on this project is \$181.15 per ton.

#### **SIGNAL POST FOUNDATION DETAIL ATTACHED :**

Bidders are requested to acknowledge and/or include this addendum with submission. All other terms, conditions and specifications remain unchanged.

Very Truly Yours,

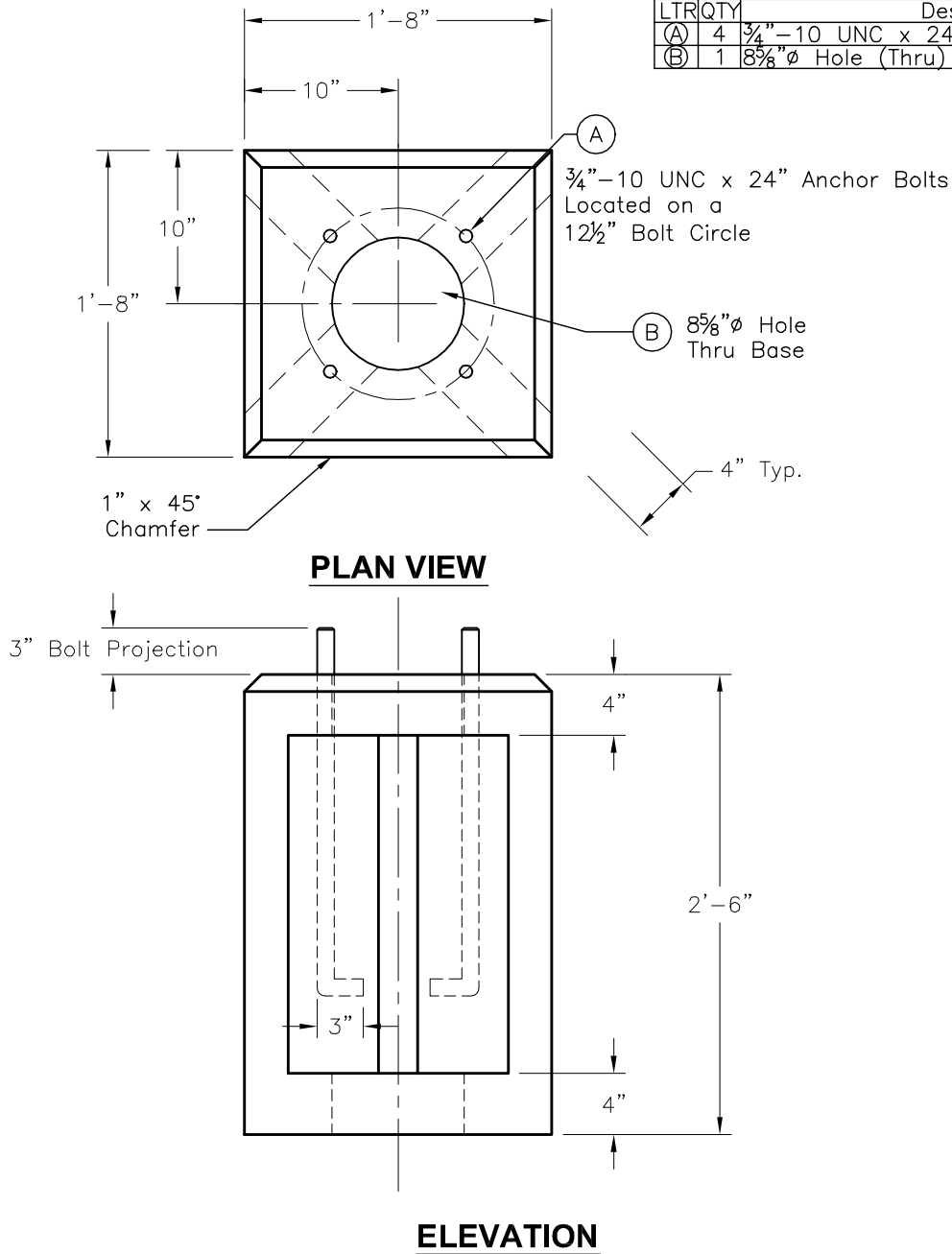
Christopher J. Gagliastro  
Purchasing Director

GENERAL NOTES:

1. Concrete: 28 Day Compressive Strength  $f'_c = 5,000$  psi Type III.
2. Rebar: Grade 60 Per ASTM A615 (Epoxy).

DATA CHART

LTR	QTY	Description
(A)	4	$\frac{3}{4}$ "-10 UNC x 24" Anchor Bolt (Galv.)
(B)	1	$8\frac{5}{8}$ " $\phi$ Hole (Thru)



**SPF2020**

FILE NAME: 325MAM20X20\_DET.DWG

ISSUE DATE: January, 2008

[www.oldcastleprecast.com](http://www.oldcastleprecast.com)

**1'-8" x 1'-8" x 2'-6"**  
**Signal Post Foundation**  
**520 Lbs.**  
**MHD**

Copyright © 2008 Oldcastle Precast