



The City of  
**WORCESTER**

Administration & Finance – Purchasing Division  
Christopher J. Gagliastro, MCPPO – Purchasing Director  
455 Main Street, Room 201, Worcester, MA 01608  
P | 508-799-1220  
[purchasing@worcesterma.gov](mailto:purchasing@worcesterma.gov)

January 12, 2023

To All Bidders:

Subject: **7956-M3 Installation of Drinking Water Fixtures / WPS**

**ADDENDUM NO. 1**

To Whom It May Concern:

With reference to our proposal request relative to the above subject, please refer to the changes/modifications/clarifications to the original proposal request.

- **Please see attached SWIG Bid Specification dated 01-12-2023 which has been updated with photos of existing fixtures.**

Proposers are requested to acknowledge and/or include this addendum with submission. All other terms, conditions and specifications remain unchanged.

Very truly yours,

Maureen McKeon  
Assistant Purchasing Director

# Worcester Public Schools

## Bid Specification to Furnish & Install Drinking Water Fixtures

### Project Scope of Work (SOW)

The Worcester Public Schools (WPS) is seeking an Awardee to procure and install 50 drinking water fixtures in 25 school buildings, in accordance with the requirements of the School Water Improvement Grant (SWIG). In addition, WPS is also seeking that one (1) set of replacement filters be provided with all 50 fixtures.

All fixtures will be replacing existing drinking water fountains or water coolers, with the following exceptions:

1. One fixture at Heard Street School to be a new install.
2. One fixture at Grafton Street School to be installed next to an existing sink with counter mounted drinking fountain.
3. Both drinking fountains in the gymnasium at Belmont Street School to be removed and replaced with one new fixture.
4. Both drinking fountains in the hallway at Vernon Hill to be removed and replaced with one new fixture.

Details regarding the schools and number of fixtures to be installed, can be found in Attachment 1. Pictures of the general locations for the installation of the fixtures can be found in Attachment 2. Floor plans to be provided to Awardee prior to commencement of work

Awardee will be responsible for engaging all trades disciplines necessary to complete all work.

### Procurement

- Furnish 50 identical fixtures meeting the required specifications in Attachment 3, and at a minimum, the recommended vandal resistant feature, as well as the additional requirements listed below. Fixtures to be stored by contractor and brought to each school upon installation.
- Fixtures must include a bottle filler with one drinking fountain.
- Fixtures must be refrigerated units.
- Furnish one (1) replacement filter per the required filter specifications listed in Attachment 3 for each fixture for a total of 50 replacement filters. Replacement filters to be delivered to the WPS Facilities Department located at 115 NE Cutoff – Building 2, Worcester, MA 01606. Delivery to be coordinated with the WPS Environmental Health and Safety (EHS) Coordinator or their designee.
- Any delays encountered or anticipated in the procurement of fixtures and/or replacement filters (e.g., back orders & shipping delays) to be communicated to the EHS Coordinator as soon as possible.

### Installation

- Awardee to pull all necessary permits.
- All work to be conducted on 2nd shift (3-11pm), unless granted prior authorization by the EHS Coordinator, Coordinator of Buildings & Grounds, or Facilities Director.
- Installation to be completed by Friday, May 26th, 2023.

- Remove any existing drinking water fixtures and properly dispose of fixtures off-site.
- Clean-up work area at the end of each shift.
- Finish wall with a composite backing, or equivalent. All wall backing to be light gray in color and to have beveled edges. Product data sheets to be provided to and approved by WPS prior to installation.
- Follow all protocols in Attachment 4, including flushing units prior to installation of filters.
- Follow any manufacturer's recommendations for flushing units after installation of filters.
- Date of installation to be written in permanent marker on each filter.
- Units to be turned off (no water or power) upon completion of installation so that necessary post-installation testing can be conducted as required by SWIG.

***Awardee and any sub-contractors to be cognizant that as part of this project, there is the potential to encounter hazardous materials (asbestos, lead-based paint, etc.). Any concerns regarding suspected hazardous materials are to be communicated immediately to the WPS EHS Coordinator, Coordinator of Buildings & Grounds, or Facilities Director, as applicable. Disturbance of such materials shall be conducted in accordance with federal, state, and local regulations and by appropriately trained & licensed personnel. Any necessary abatement to be the responsibility of WPS. If the Awardee or any of their sub-contractors discovers or suspects potentially hazardous materials, the Awardee will cease all work in the area until any necessary abatement work is completed. At no time will Awardee or their sub-contractors conduct, or attempt to conduct, any abatement work or disturb hazardous materials.***

**Prior to commencement of contractual obligations, an initial meeting with WPS staff will be held within one week after the receipt of the Purchase Order to discuss:**

1. The SOW, schedule, and critical project milestones.
2. The Awardee's organization chart and role of the Awardee's personnel, including the Awardee's Project Manager.
3. Building access and scheduling.

### Invoicing

All project activities must be completed by May 26, 2023. All invoices to be submitted by June 16, 2023. Invoices to provide the following details:

- Name of each school and work associated with that building
- Service dates

Invoices to be emailed to [wpsacctspayable@worcesterschools.net](mailto:wpsacctspayable@worcesterschools.net), and the EHS Coordinator

### Attachments

**Attachment 1 – List of Schools and Number of Fixtures per School**

**Attachment 2 – Pictures of Existing Fixtures to Be Replaced and Installation Locations**

**Attachment 3 – SWIG Technical Requirements**

**Attachment 4 – MassDEP Installation Protocols**

**Attachment 5 – Pricing Sheet**

# **Attachment 1**

## **List of Schools**

<b>School</b>	<b>Address</b>	<b>Number of Fixtures to Furnish &amp; Install</b>
1. Belmont Elem. School	170 Belmont St 01605	2
2. Burncoat High School	179 Burncoat St 01606	6
3. Burncoat Middle School	135 Burncoat St 01606	3
4. Burncoat Prep.	526 Burncoat St 01606	1
5. Chandler Magnet Elem. School	525 Chandler St 01602	1
6. Clark Street Elem. School	280 Clark St 01606	3
7. Doherty High School	299 Highland St 01602	4
8. Elm Park Comm. Elem. School	23 N. Ashland St 01609	1
9. Flagg Street Elem. School	115 Flagg St 01602	1
10. Gerald Creamer Center	120 Granite St 01604	2
11. Goddard School	14 Richards St 01603	1
12. Grafton Street Elem. School	311 Grafton 01604	2
13. Heard Street Elem. School	200 Heard St 01603	3
14. Norrback Ave. Elem. School	44 Malden St 01606	2
15. Rice Square Elem. School	76 Massasoit Rd 01604	2
16. Roosevelt Elem. School	1006 Grafton Street 01604	1
17. Tatnuck Elem. School	1083 Pleasant St 01602	2
18. Thorndyke Rd. Elem. School	30 Thorndyke Rd 01602	1
19. Union Hill Elem. School	1 Chapin St 01604	3
20. University Park Campus School	12 Freeland St 01603	1
21. Vernon Hill Elem. School	211 Providence St 01607	2
22. West Tatnuck Elem. School	300 Mower St 01602	1
23. Woodland Academy	93 Woodland St 01610	2

24. Worcester Arts Magnet School	315 St. Nicholas Av 01606	1
25. Worcester East Middle School	420 Grafton St 01604	2

# **Attachment 2**

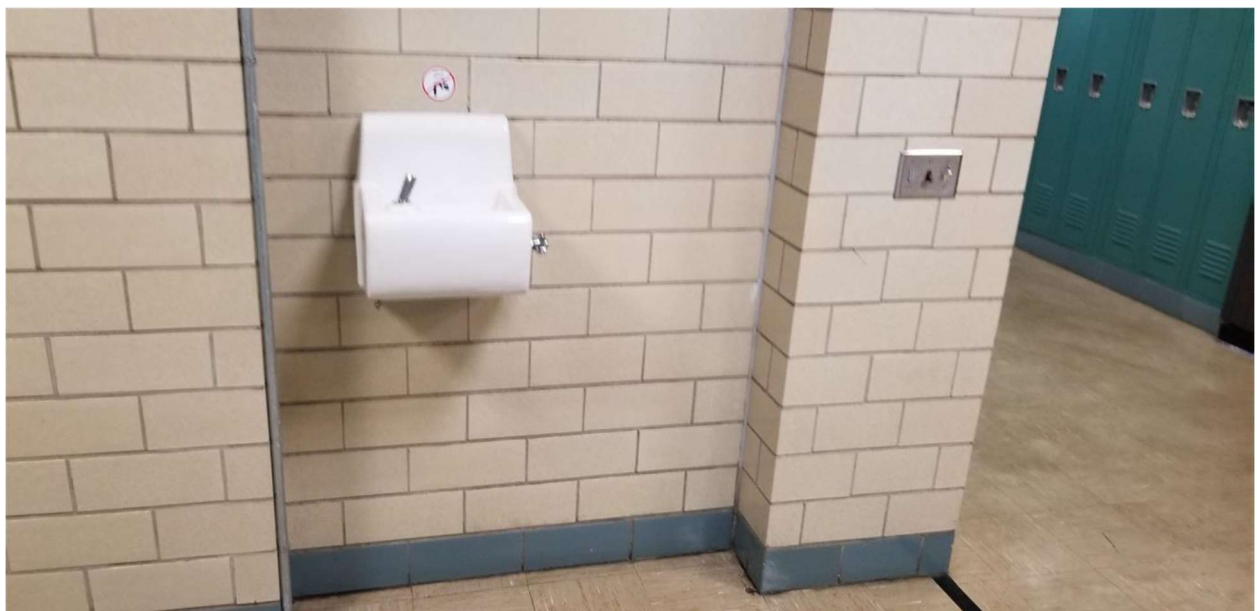
**Pictures of Fixtures to Be Replaced &  
Installation Locations**

# Belmont Elementary





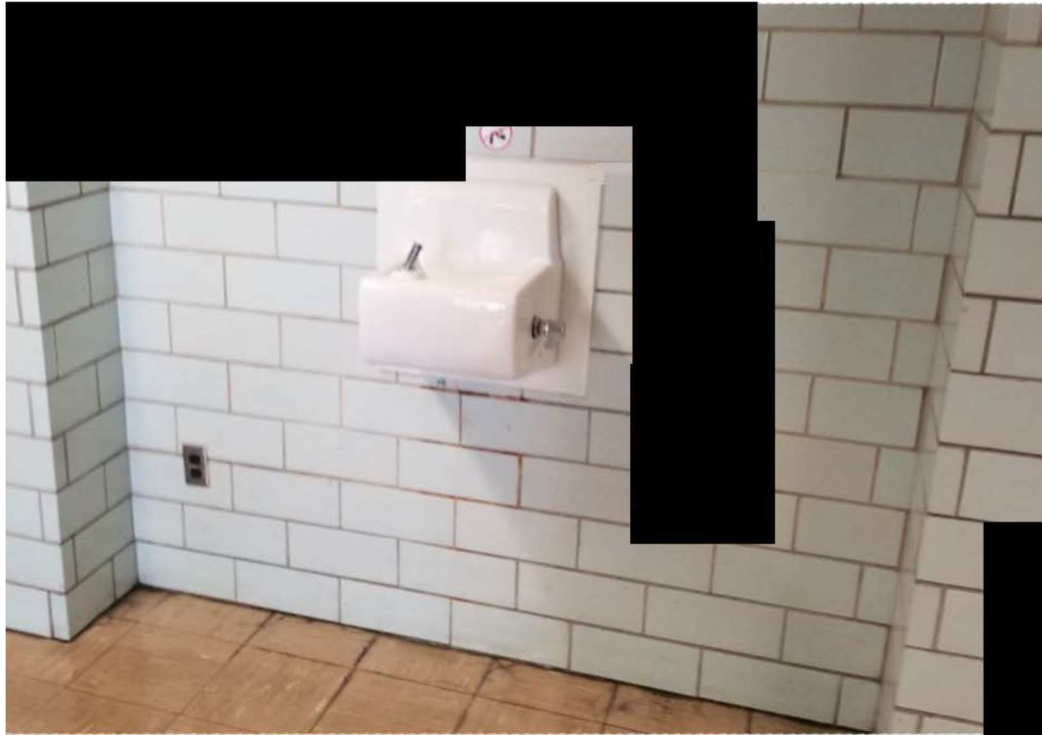
# Burncoat High School



# Burncoat High School



# Burncoat High School



# Burncoat Middle School





## Burncoat Prep.



# Chandler Magnet



# Clark Street



## Clark Street





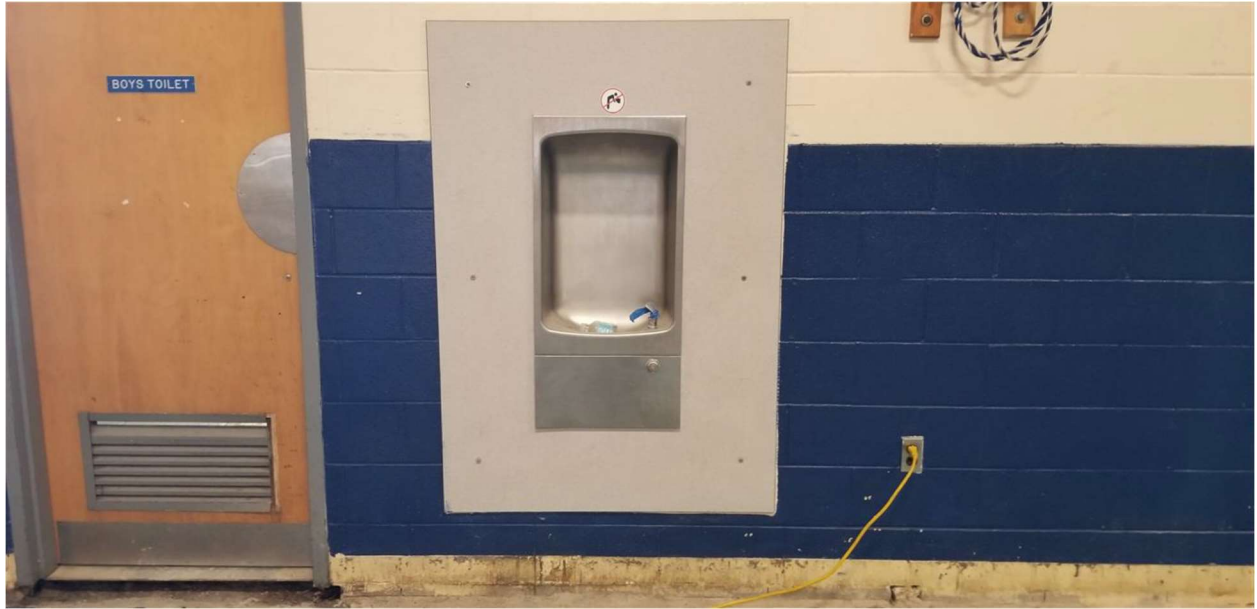
# Doherty High School



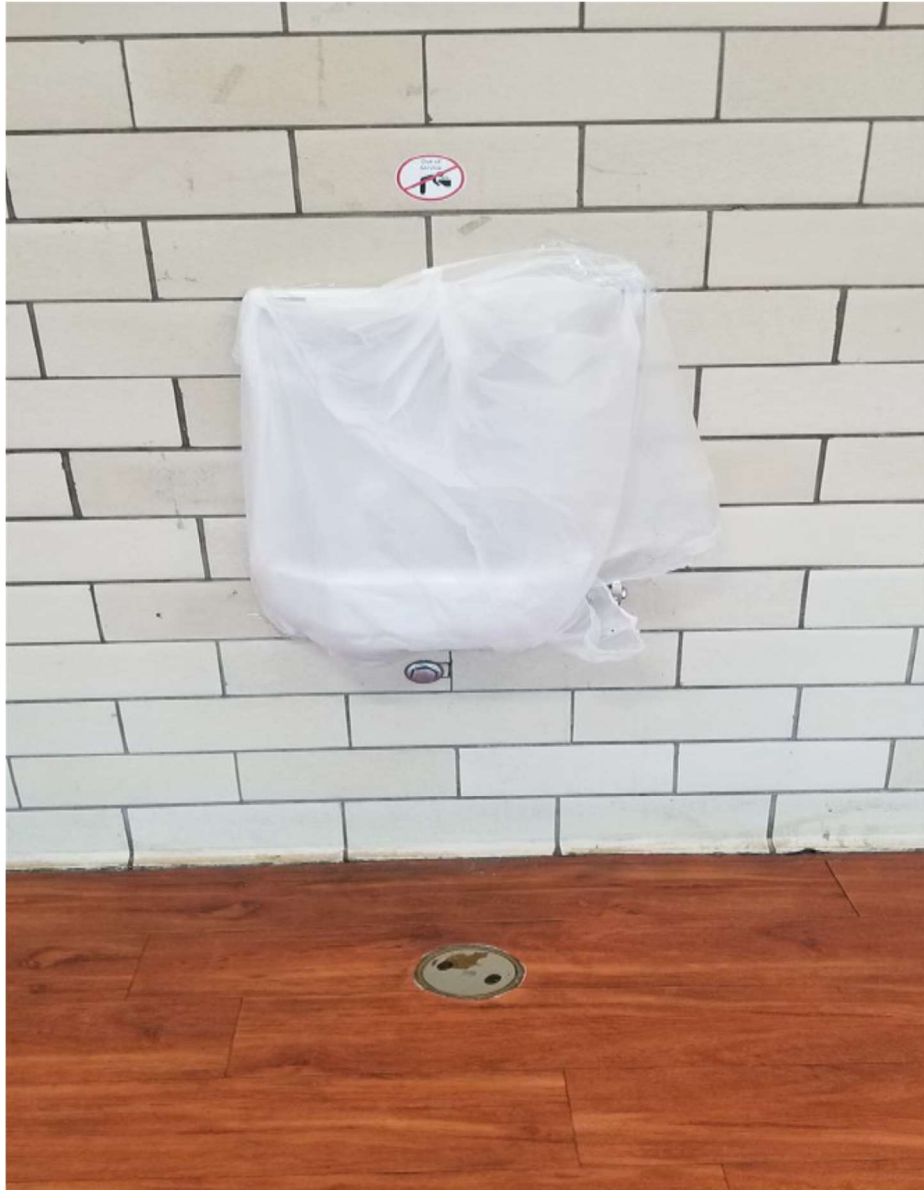
# Doherty High School



# Elm Park



## Flagg Street



# Gerald Creamer Center



# Goddard School

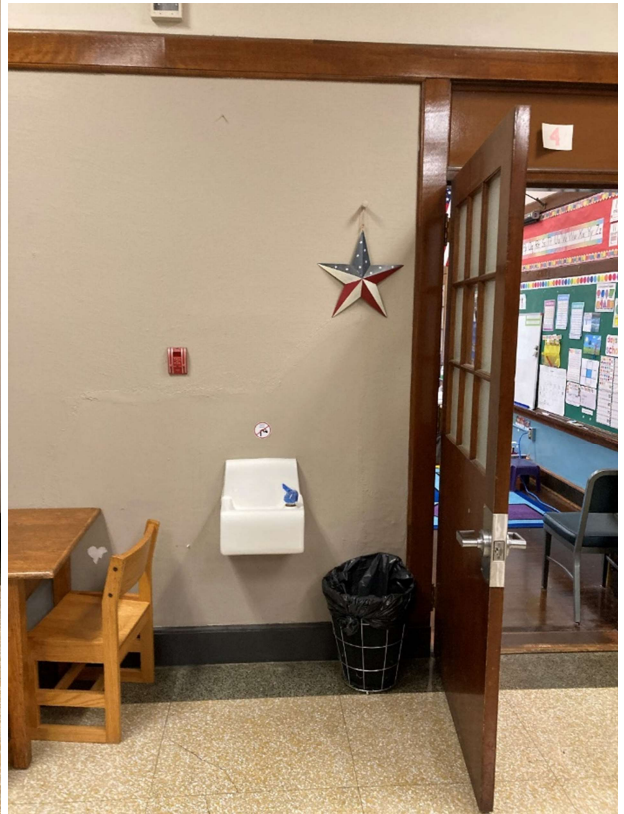




## Grafton Street



# Heard Street

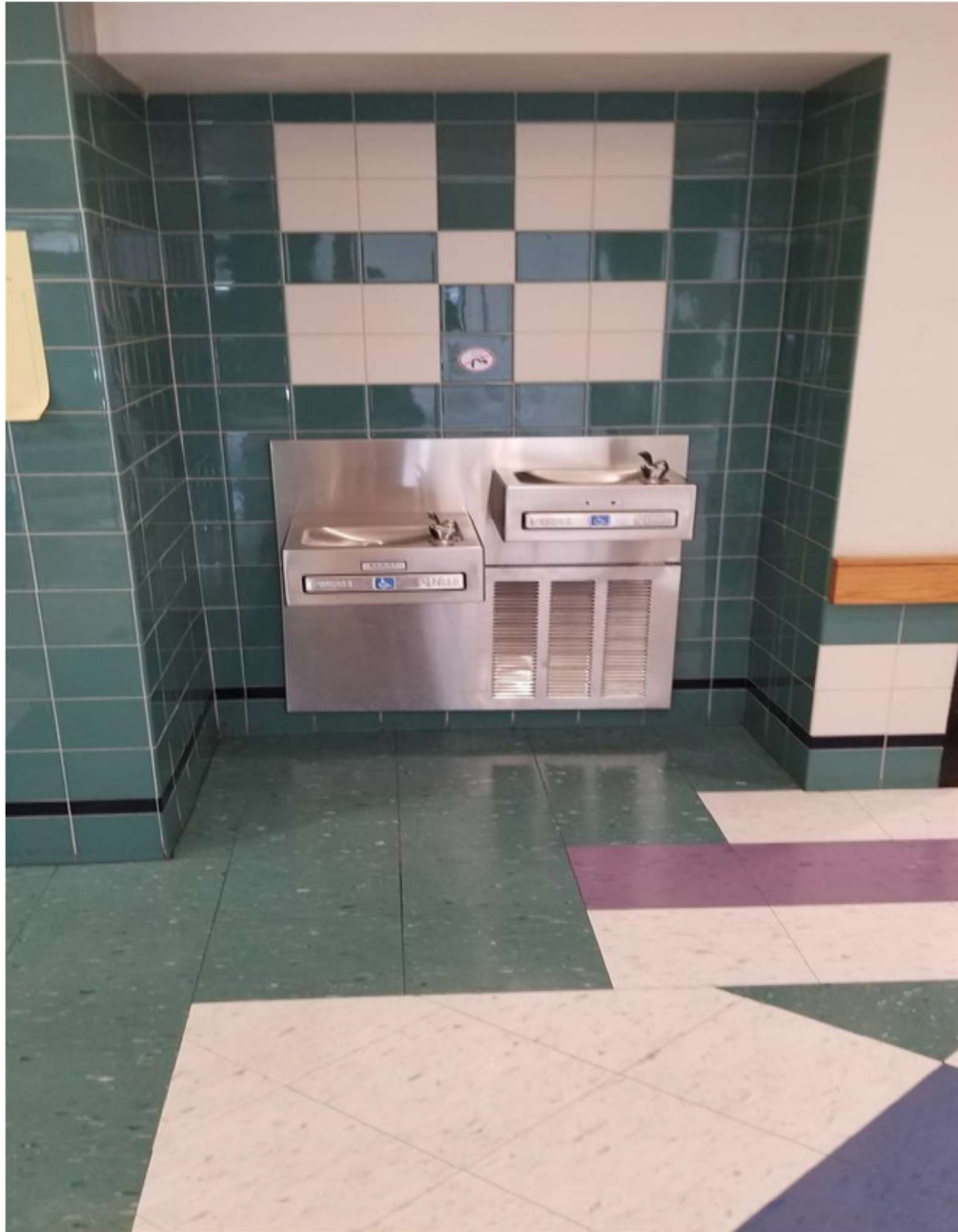




## Heard Street – New Install Location

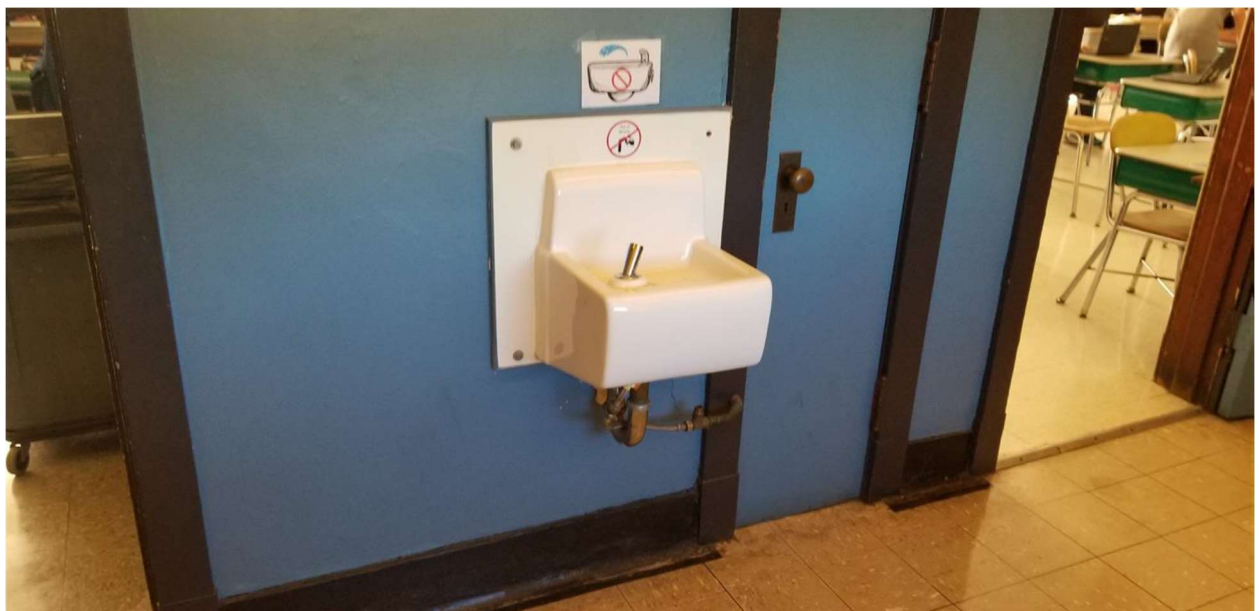


## Norrback Ave





# Rice Square



# Roosevelt



# Tatnuck Magnet



## Thorndyke Road

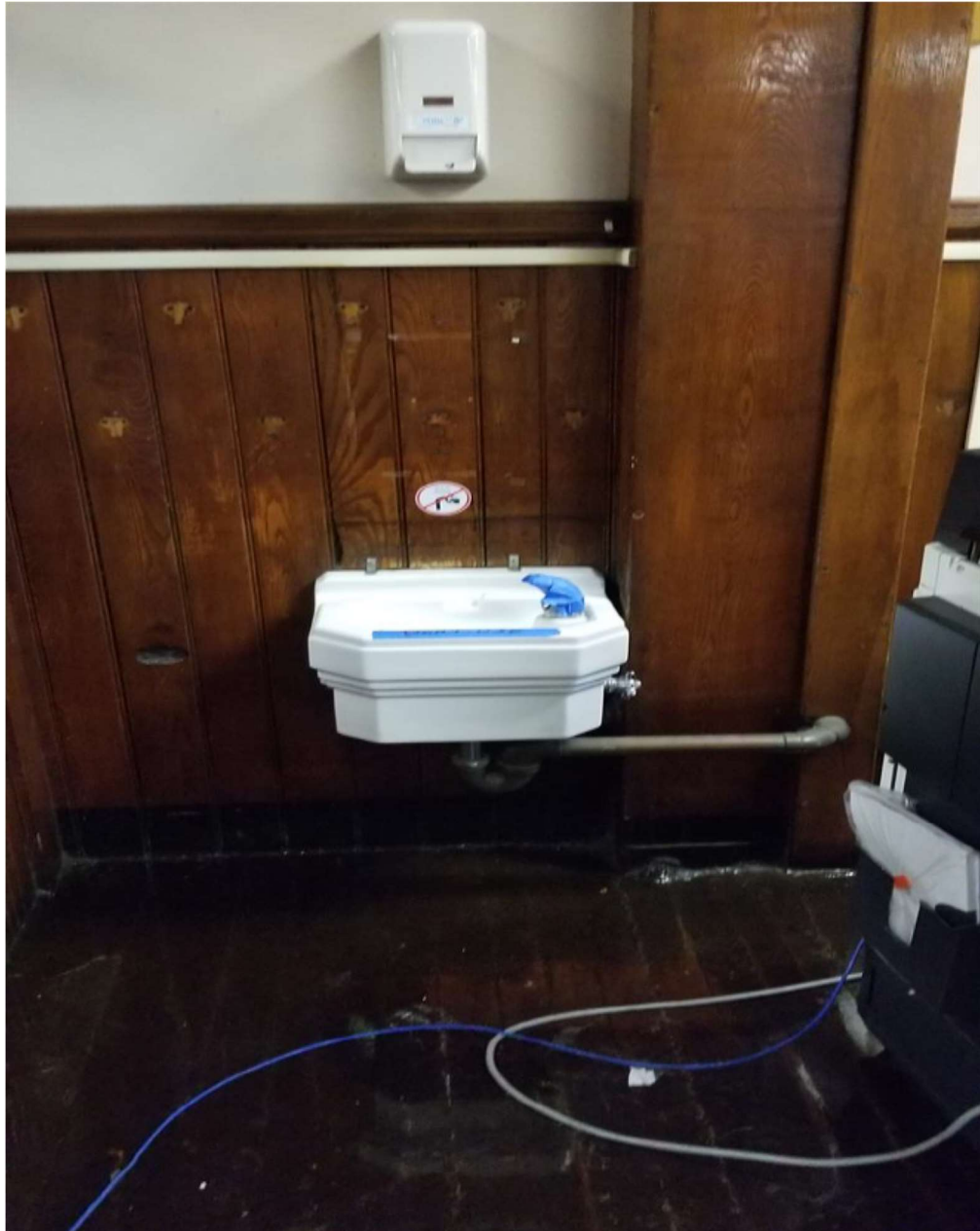


# Union Hill





# University Park Campus School





# Vernon Hill



## West Tatnuck



# Woodland Academy



## Worcester Arts Magnet





# Worcester East Middle



# **Attachment 3**

## **SWIG Technical Requirements**

# MASSACHUSETTS SWG

SCHOOL WATER IMPROVEMENT GRANTS

**Below is a list of technical specifications for eligible SWIG fixtures.**

**1) Bottle Filling Stations, Filter Additions and Retrofit Units, must be:**

- a) constructed of a durable anti-microbial, anti-corrosion material or stainless steel;
- b) certified to National Sanitation Foundation International (NSF) and American National Standards Institute (ANSI) standards for the number of contaminants that leach from the products into the drinking water (NSF/ANSI 61) and a maximum lead content by weight (NSF/ANSI 372);
- c) contain a visible LED indicator for filter maintenance;
- d) meet Americans with Disabilities Act (ADA) guidelines for reach range and wheelchair access.

**2) Filters and Replacement Filters, must be:**

- a) certified to NSF International/ANSI standards 42 and 53 for the removal of lead and other contaminants with documented evidence that the filters reduce lead below 1 ppb and;
- b) have at least a 3,000-gallon capacity.

**3) Additional Recommendations from MassDEP:**

**Particulate Filters**

Utilizing a particulate filter in addition to the onboard filter could extend the useful life of fixtures and filters while decreasing the risk of filters being compromised by particulates.

**Vandal-Resistant**

For locations with heavy traffic or high-fixture-usage, consider the more durable construction found in vandal-resistant fixtures.

**Filter Shut Off**

MassDEP recommends the use of fixtures that will shut-off when the filter has reached the end of its service life.

**Note:** Eligible fixtures and filters must be certified by NSF/ANSI and must be listed on [nsf.org](https://www.nsf.org)



w: [mass.gov/swig](https://mass.gov/swig)

a: 1 Center Plaza, Suite 430 | Boston, MA 02108

e: [SWG@tre.state.ma.us](mailto:SWG@tre.state.ma.us) | p: 617-367-9333 x 546

# **Attachment 4**

## **SWIG Installation Protocols**



## EXHIBIT D



### Tips on O&M for POU Devices

Operation and Maintenance (O&M) guidance for Point of Use (POU) devices used for the removal of lead and copper in drinking water at schools and Early Education and Care Facilities (EECF) that are not public water systems (PWS)

---

Use this document in conjunction with MassDEP's **Best Management Practices for the Removal of Lead and Copper in Drinking Water: Installation of Point-of-Use Devices at Schools or Early Education and Care Facilities that are not Registered Public Water Systems** located at <https://www.mass.gov/media/1744356>

### How POU Devices Reduce Lead in Water

Water dispensers or POU devices with filters attached to a faucet or to the piping under the counter, allows water to flow through either an adsorption media, or a filter, which captures contaminants such as lead or copper and other similar sized ions. In the case of filters, the contaminants are trapped on the filter and subsequently removed. In the case of adsorption media, the contaminants are attached to the grains of the media. In either case contaminants are retained by the POU device, thus reducing the contaminants in the finished drinking water.

### Training

For information on basic drinking water operations training courses, you may contact the following organizations:

Massachusetts Department of Environmental Protection, Drinking Water Program  
617-292-5770, [program.director-dwp@state.ma.us](mailto:program.director-dwp@state.ma.us)

Mass Water Works Association  
<http://masswaterworks.org>

Mass Rural Water Association  
<http://massrwa.org/>

New England Water Works Association  
<http://newwa.org/>

American Water Works Association  
<https://www.awwa.org/conferences-education/distance-learning/elearning.aspx>

Sacramento State Office of Water Programs  
<https://www.owp.csus.edu/courses/drinking-water.php>

National Environmental Services Center  
[http://www.nesc.wvu.edu/subpages/operator\\_certification.cfm](http://www.nesc.wvu.edu/subpages/operator_certification.cfm)

## Installation

All parties installing, repairing or maintaining these devices should wash their hands and use clean sanitary tools and practices.

Devices should be located where they are protected from tampering and vandalism.

**Flushing:** Prior to installation of the POU device, the water line needs to be flushed (for at least 10 minutes) in order to remove sediment from the pipe, which could clog the device filter.

**Certified Devices:** Use only POU treatment devices and filter replacements that are certified to NSF International /ANSI standards for the removal of lead and copper. Current organizations certifying to these standards include NSF International, Water Quality Association (WQA), Underwriters Laboratory (UL), and the International Association of Plumbers and Mechanical Officials (IAPMO). Always verify with the organization that the device has been tested and certified for the removal of lead and/or copper. For more information see the Information /Assistance section below.

**Follow State and Local Requirements:** Installation of POU devices must be done by a licensed plumber in accordance with the Massachusetts Board of State Examiners of Plumbers and Gas Fitters - 248 CMR 1.00 - 11.00.

**Install on Cold Water Lines Only:** Install POU devices on the cold water supply lines of the facility's plumbing. Do not attach devices to hot water supply line to the filter.

**Shut off Valve:** Install a water shutoff valve on the incoming cold water supply line to aid in future servicing of POU device filter.

**Check for Leaks:** After installing new POU devices, open the water supply valve and check for leaks. Flush the system sufficiently (approximately three minutes) to effectively remove residue before putting the outlet back into use.

**Cross Connections and Local Public Water Supplier:** Inform your local PWS when the installation of a POU device is complete. They may wish to conduct a cross connection control survey.

# **Attachment 5**

## **Pricing Sheet**

## WPS Drinking Water Fixtures & Installation Pricing Page

Building	Address	Cost Per School (fixtures, replacement filters, all other parts & labor)
Belmont Elem. School	170 Belmont St 01605	\$ _____
Burncoat High School	179 Burncoat St 01606	\$ _____
Burncoat Middle	135 Burncoat St 01606	\$ _____
Burncoat Prep.	526 Burncoat St 01606	\$ _____
Chandler Magnet Elem. School	525 Chandler St 01602	\$ _____
Clark Street Elem. School	280 Clark St 01606	\$ _____
Doherty High School	299 Highland St 01602	\$ _____
Elm Park Comm. Elem. School	23 N. Ashland St 01609	\$ _____
Flagg Street Elem. School	115 Flagg St 01602	\$ _____
Gerald Creamer Ctrr (Granite St)	120 Granite St 01604	\$ _____
Goddard School / Science Tech	14 Richards St 01603	\$ _____
Grafton Street Elem. School	311 Grafton 01604	\$ _____
Heard Street Elem. School	200 Heard St 01603	\$ _____
Norrback Ave. Elem. School	44 Malden St 01606	\$ _____
Rice Square Elem. School	76 Massasoit Rd 01604	\$ _____
Roosevelt Elem. School	1006 Grafton Street 01604	\$ _____
Tatnuck Elem. School	1083 Pleasant St 01602	\$ _____
Thorndyke Rd. Elem. School	30 Thorndyke Rd 01602	\$ _____
Union Hill Elem. School	1 Chapin St 01604	\$ _____
University Park Campus School	12 Freeland St 01603	\$ _____
Vernon Hill Elem. School	211 Providence St 01607	\$ _____
West Tatnuck Elem. School	300 Mower St 01602	\$ _____
Woodland Academy	93 Woodland St 01610	\$ _____
Worcester Arts Magnet School	315 St. Nicholas Av 01606	\$ _____
Worcester East Middle School	420 Grafton St 01604	\$ _____
<b>TOTAL PROJECT COST (sum of all schools)</b>		<b>\$ _____*</b>

\*LOW BID PRICE BASED ON TOTAL AMOUNT

BIDDER NAME: \_\_\_\_\_