

GYM FLOOR REPLACEMENT  
AT THE  
ELM PARK COMMUNITY SCHOOL  
FOR  
WORCESTER PUBLIC SCHOOLS

23 NORTH ASHLAND STREET  
WORCESTER, MA

MAY 2, 2022



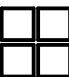
ELM PARK COMMUNITY SCHOOL

ARCHITECT:

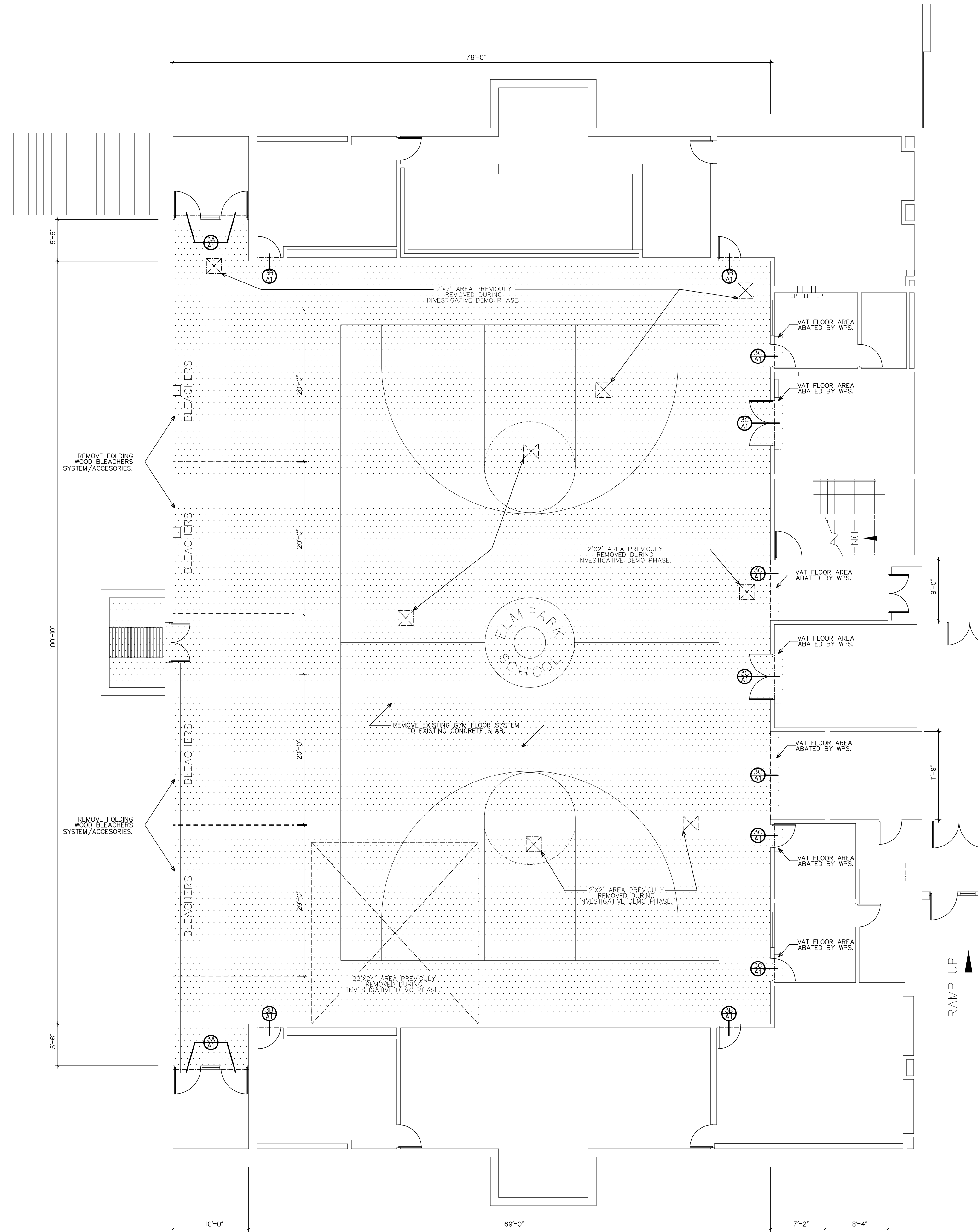
 **NAULT ARCHITECTS, INC.**  
 71 HOPE AVENUE  
WORCESTER, MA 01603  
TEL: (508) 755-6134  
FAX: (508) 754-4661

LIST OF DRAWINGS

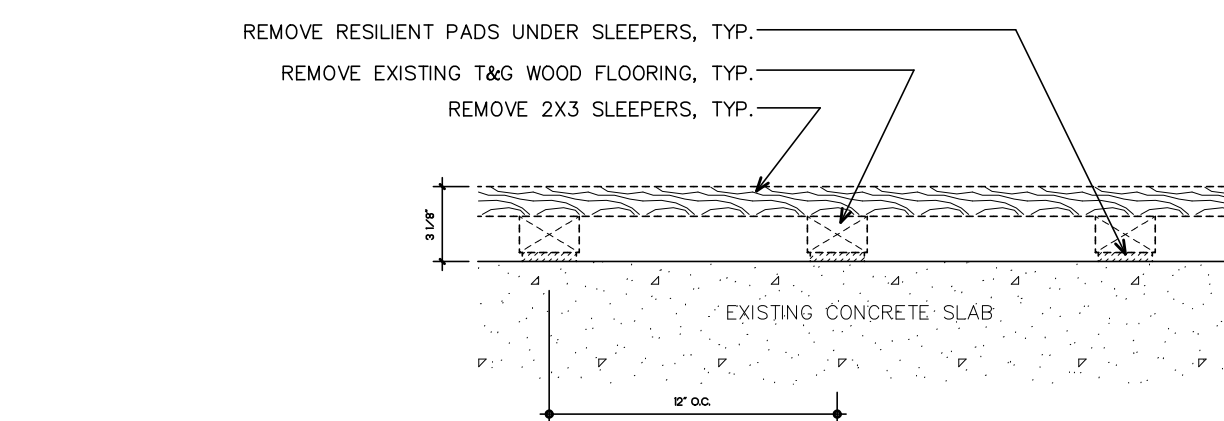
COVER  
A1 - DEMOLITION PLAN AND DETAILS  
A2 - NEW PLAN AND DETAILS  
A3 - NEW BLEACHERS

DRAWING TITLE	
COVER SHEET	
CONSULTANT	
ARCHITECT	
 <b>NAULT ARCHITECTS, INC.</b> <small>71 HOPE AVENUE WORCESTER, MA 01603 TEL: (508) 755-6134 FAX: (508) 754-4661</small>	
SCALE	DRAWING NO.
AS NOTED	T1
DATE	MAY 2, 2022

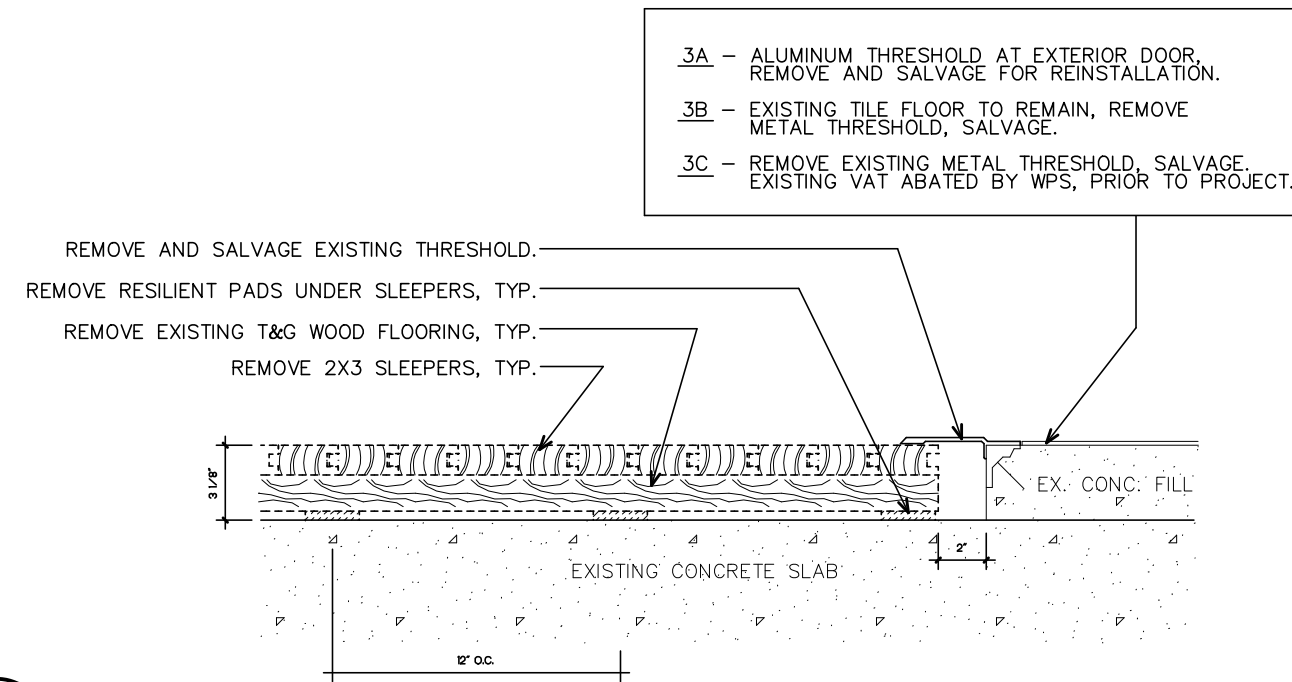




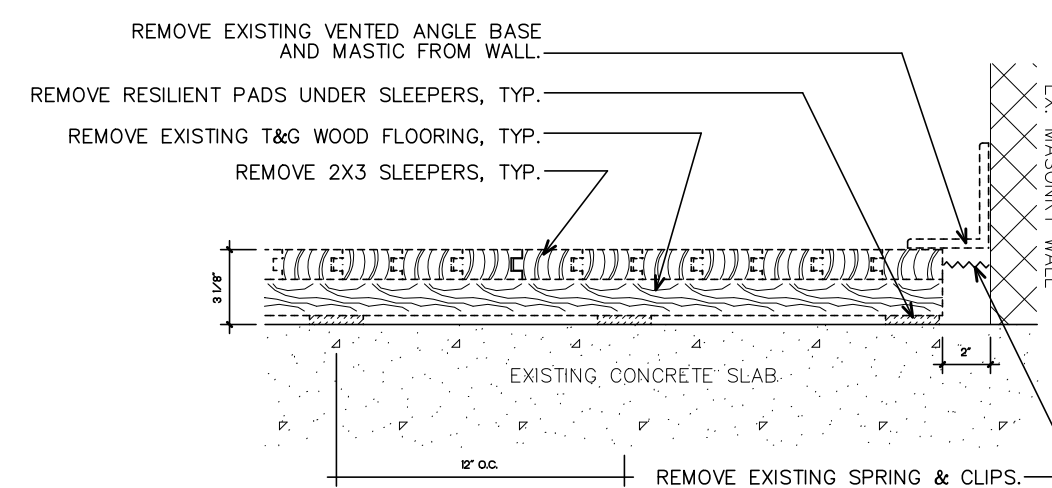
1  
A1  
DEMOLITION PLAN  
1/8" = 1'-0"



2  
A1  
TYPICAL DEMOLITION DETAIL  
1 1/2" = 1'-0"



3  
A1  
TYPICAL DEMOLITION DETAIL AT THRESHOLDS  
1 1/2" = 1'-0"



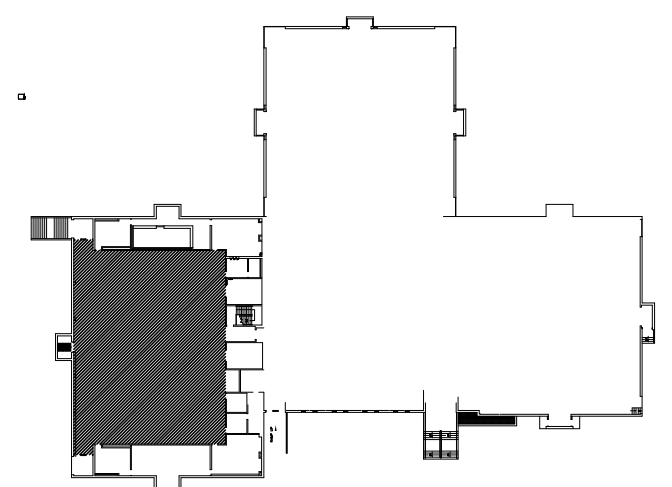
4  
A1  
TYPICAL DEMOLITION DETAIL AT WALL  
1 1/2" = 1'-0"

GENERAL NOTES

1) THE GENERAL CONTRACTOR SHALL FIELD VERIFY ALL DIMENSIONS AND LOCATIONS PRIOR TO THE START OF THE WORK.



BUILDING KEY PLAN



DRAWING TITLE

DEMOLITION PLANS  
&  
DETAILS

JOB NUMBER: NAULT #1657

JOB TITLE

GYM FLOOR REPLACEMENT  
AT THE  
ELM PARK COMMUNITY SCHOOL  
WORCESTER PUBLIC SCHOOLS

CONSULTANT

ARCHITECT

NAULT ARCHITECTS, INC.  
37 HOPE AVENUE  
WORCESTER, MA 01603  
TEL: (508) 755-6134  
FAX: (508) 755-6881

DRAWING NO.

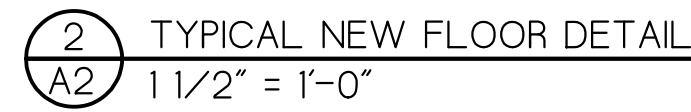
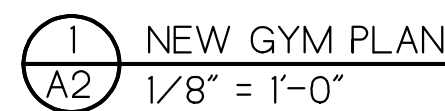
A1

SCALE

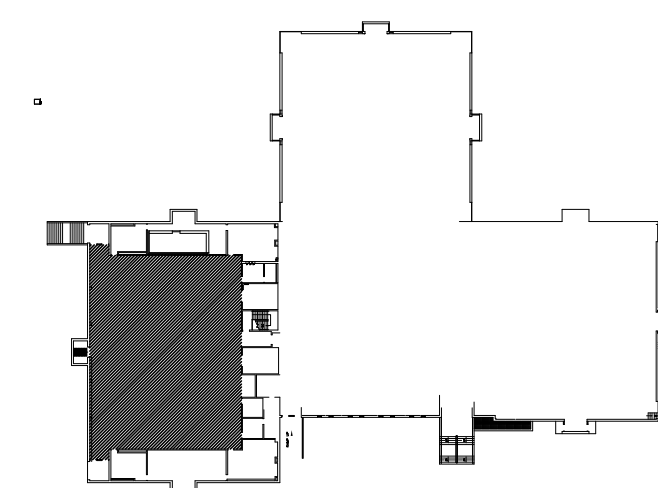
AS NOTED

DATE

MAY 2, 2022



1) THE GENERAL CONTRACTOR SHALL FIELD VERIFY ALL DIMENSIONS AND LOCATIONS PRIOR TO THE START OF THE WORK.

NEW PLANS  
&  
DETAILS

GYM FLOOR REPLACEMENT  
AT THE  
ELM PARK COMMUNITY SCHOOL  
WORCESTER PUBLIC SCHOOLS

**NAULT ARCHITECTS, INC.**  
71 HOPE AVENUE  
WORCESTER, MA 01603  
TEL: (508) 755-6111  
FAX: (508) 754-4666

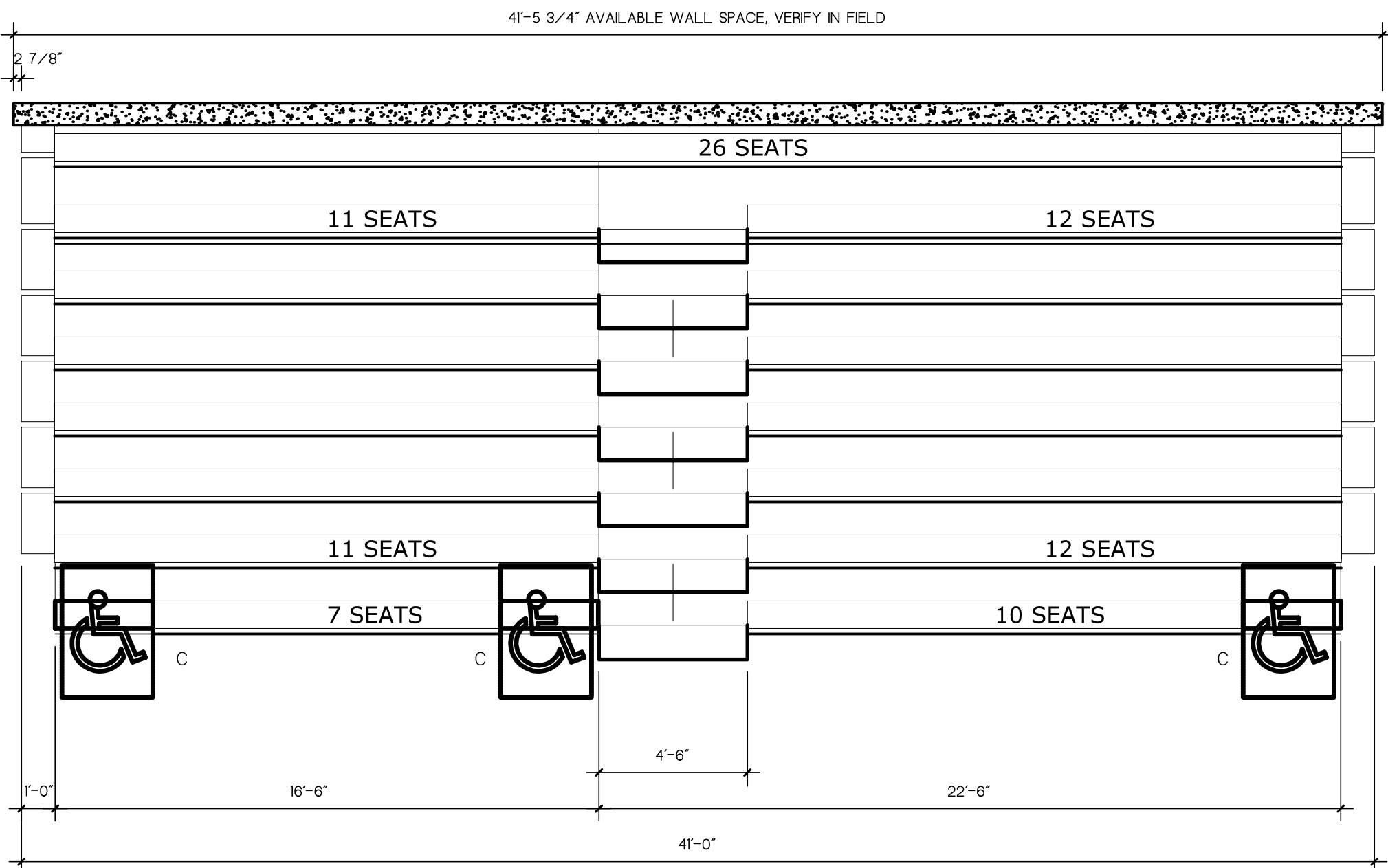
A2

SCALE

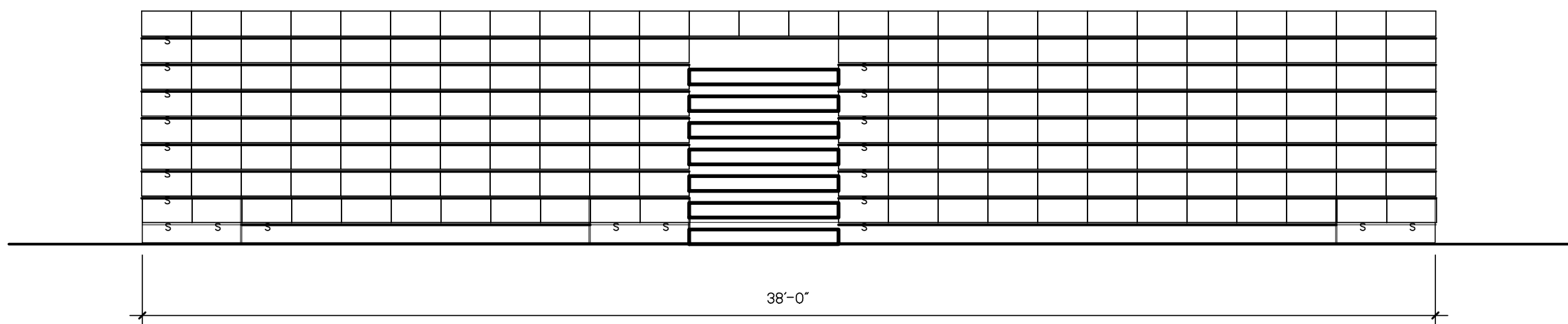
AS NOTED

DATE	MAY 2, 2022
------	-------------

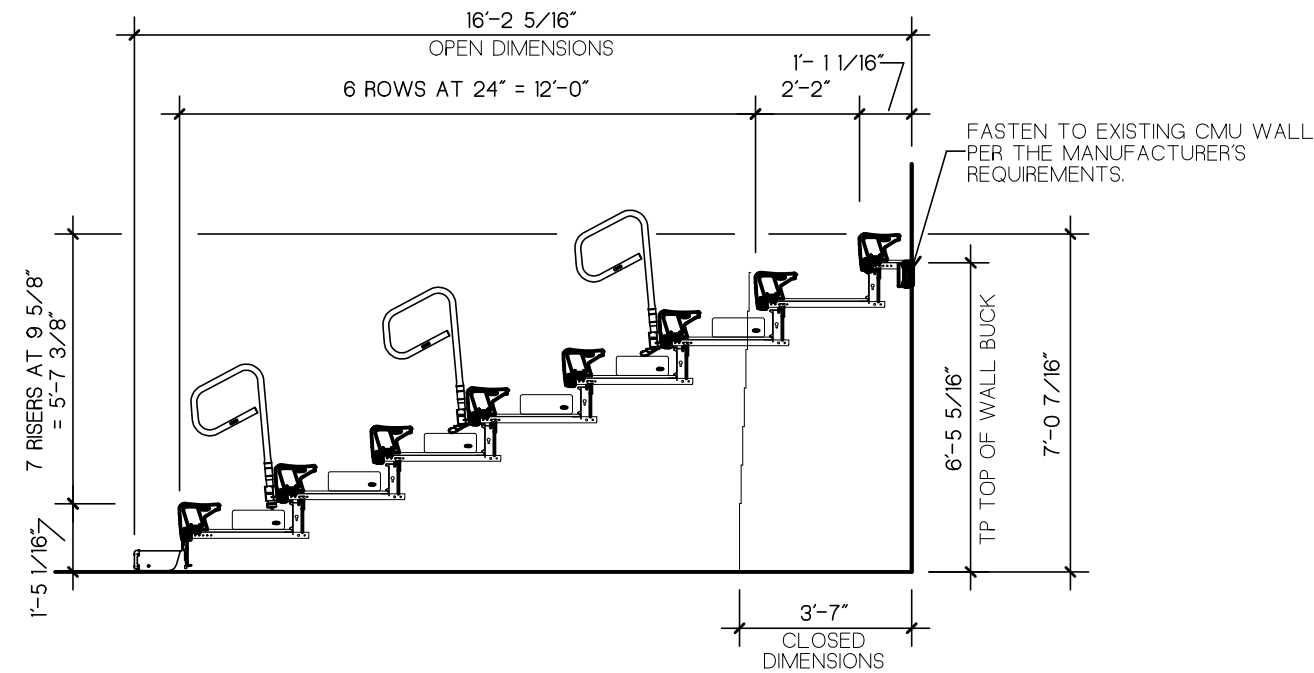




1 NEW BLEACHER PLAN - SEE ALTERNATE SECTION  
A3 1/4" = 1'-0"



2 NEW BLEACHER ELEVATIONS - SEE ALTERNATE SECTION  
A3 1/4" = 1'-0"

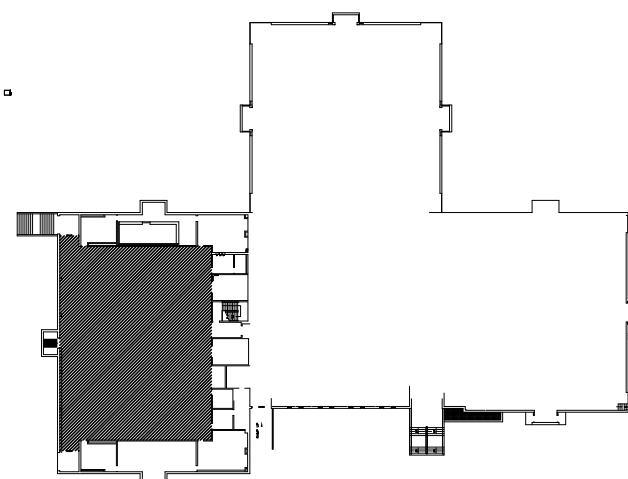


3 NEW BLEACHER SECTION - SEE ALTERNATE SECTION  
A3 1/4" = 1'-0"

#### GENERAL NOTES

1) THE GENERAL CONTRACTOR SHALL FIELD VERIFY ALL DIMENSIONS AND LOCATIONS PRIOR TO THE START OF THE WORK.

#### BUILDING KEY PLAN



#### DRAWING TITLE

NEW BLEACHERS

JOB NUMBER: NAULT #1657

JOB TITLE  
GYM FLOOR REPLACEMENT  
AT THE  
ELM PARK COMMUNITY SCHOOL  
WORCESTER PUBLIC SCHOOLS

CONSULTANT

ARCHITECT

NAULT ARCHITECTS, INC.  
21 HOPE AVENUE  
WORCESTER, MA 01602  
TEL: (508) 756-4134  
FAX: (508) 754-4661

DRAWING NO.

A3

SCALE

AS NOTED

DATE

MAY 2, 2022