



CITY OF WORCESTER, MASSACHUSETTS



Administration & Finance
Purchasing Division
455 Main Street – Room 201
Worcester, MA 01608
(508) 799-1220
www.worcesterma.gov

October 19, 2021

To All Bidders:

Subject: **Bid No. 7694-W2, Vehicles, School Buses / WPS**

ADDENDUM NO. 3

To Whom It May Concern:

With reference to our bid request relative to the above subject, please refer to the changes/modifications/clarifications to the original proposal request.

- **Please see attached general bid clarifications regarding additional equipment.**
- **Please see below questions received and responses / clarifications from City:**

School Bus Specifications Items 1 & 2 – Chassis & Body Specification

1. In this bid, you are stating that “all specifications must be met in their entirety to be considered for award.” There are specifications that are proprietary and specific to certain OEM products.(For example IC & Thomas) Are you willing to take exceptions and/or open the bid to all OEM manufacturers products whose bus will perform the same job? If so, please see our questions below in regard to the bid bus specifications written.

Answer: Please see clarification below

2. On the Type A Buses is it ok to have the exhaust under the rear bumper as opposed to through the rear bumper?

Answer: It is not acceptable to have the exhaust under the rear bumper. The Worcester Public Schools requires the exhaust as specified as a measure to mitigate snow bank maneuverability.

3. Under the Type A Specs under “Floor” It states that there “must be at a single level from top entrance step to the rear exit door of school bus. Is the below pictures illustrating the design of Blue Birds Type A Wheelchair product acceptable? Our design is a level floor after the last entry step into the vehicle. See below.



CITY OF WORCESTER, MASSACHUSETTS



Administration & Finance
Purchasing Division
455 Main Street – Room 201
Worcester, MA 01608
(508) 799-1220
www.worcesterma.gov

Answer: The floor must be as specified. The floor being level with the top step reduces the chance of trips and falls for mobility challenged students.



- Under the Type A specifications, we just want to make sure you are looking to have 8 total seated passengers with 3 open spots for wheelchairs. Please see floor plan picture below. We want to make sure that the track integrated into the floor for the wheelchair hold downs is what you are looking for while the 4 front seats are stationary mounted. We just want to clarify that you are not asking for full track seating throughout the entire bus.

Answer: Correct, as specified, 8 seated and 3 wheelchair.

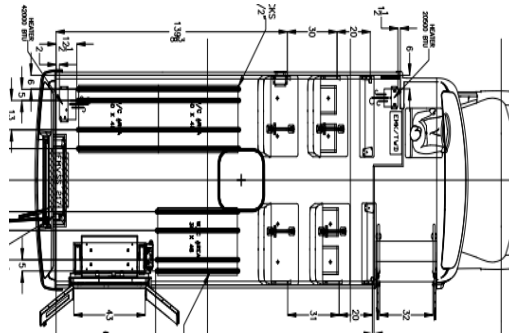


CITY OF WORCESTER, MASSACHUSETTS



Administration & Finance
Purchasing Division
455 Main Street – Room 201
Worcester, MA 01608
(508) 799-1220

www.worcesterma.gov



School Bus Specifications- Item 3- Chassis & Body Specification

5. Under the Type C Bus Specifications, under chassis specifications it states, “Model Year no earlier than 2021 Chevy or GMC dual rear wheel chassis model.” Type C Buses are not built on Ford or GMC chassis by any of the manufacturers (ie. Blue Bird, IC, or Thomas.)? Can you please clarify the statement?

Answer: DELETE:

Model Year no earlier than 2021 Chevrolet or GMC dual rear wheel chassis model for Type-C school bus

INSERT:

Model Year no earlier than 2021 dual rear wheel chassis model for Type-C school bus

6. Under the Type C Bus Specifications in the Safety Equipment category, you request an electronic stability program and a collision mitigation system. Blue Bird offers a electronic stability program. Please reference the attached product information bulletin. The collision mitigation system you asked to include lane departure warnings, speeding alerts, automatic braking when stationary vehicles are detected in the vehicles path are proprietary to one brand as a standard option and offered as an alternative option on another brand. Blue Bird does not offer this type of Collision Mitigation System which is tied in with the brakes. We cannot add this type of collision mitigation in aftermarket due to tampering with the FMVSS brake safety standards. Our question is will you accept the electronic stability control that is standard and will you take exception the collision mitigation you request?

Answer: The collision mitigation system, as specified, is a state-of-the-art safety feature, which is available to multiple brands.

Bid/Contract Requirements

7. In the bid, you state delivery shall be no later than June 1, 2022. With the current state of the nation and the supply chain throughout we have seen some delays over the past few months that are completely out of all manufacturers control. The entire transportation industry is experiencing similar delays. Will you accept deliveries after June 1, 2022?



CITY OF WORCESTER, MASSACHUSETTS



Administration & Finance
Purchasing Division
455 Main Street – Room 201
Worcester, MA 01608
(508) 799-1220
www.worcesterma.gov

Answer: No, schedule is as specified.

8. There are several spots throughout the bid where warranty is mentioned. On page 7 it states that “bidders shall provide a thirty-six month “bumper to bumper” warranty.” Under the specification you ask for the “full manufacturer warranty.” Are you looking for a 36-month bumper to bumper warranty or just the “full standard warranty” the manufacturer provides for the buses?

Answer: DELETE: “36 Month bumper to bumper warranty” and “full standard warranty”

INSERT: No less than 1 year bumper to bumper warranty, 5 year unlimited mileage engine warranty and 7 year unlimited mileage transmission warranty.

9. As a secondary question regarding the warranty. We will be working with several different 3rd parties to complete the bid (i.e. Tyler Technologies, Provision, Catstrap). Are you requiring those warranties to also be 3 yr. warranties (if offered) or are their standard warranties acceptable?

Answer: Standard warranty is acceptable for 3rd party equipment added to the specifications by the Worcester Public Schools.

Insurance & Workers Compensation

10. Under “Insurance and Worker’s Compensation” Number 31 you ask for automobile liability insurance. We are not a bus contractor, we will only be selling the city the buses. Do we need to submit our automobile liability insurance?

Answer: Yes.

11. Under “Insurance and Worker’s Compensation” Number 33 you ask for “public liability insurance to hold the city harmless from any and all claims for damage arising out of bodily injury or death of any person or person, and for all claims for damages arising out of injury to or destruction of property cause by accident resulting from the use of implements, equipment or labor used in the performance of the contractor or from any neglect, default or omission, or want of proper care, or misconduct on the part of the contractor or for anyone of his employees during the execution of the contract.” We are not a bus contractor, we are a bus dealer only selling the buses to the city. Could you clarify the relevance of this public liability insurance to a bus dealer? Does proof of a general liability insurance policy, which is more comprehensive than a public liability insurance, satisfy this requirement if needed?

Answer: Bidders are expected to meet the minimum insurance requirements as noted in the bid invitation.

12. Under Insurance and Workers Compensation Number 32 you state that “The Contractor shall furnish the City of Worcester with certificates showing that all of his/her employees who shall be connected with this work are protected under Massachusetts statutory worker’s compensation



CITY OF WORCESTER, MASSACHUSETTS



Administration & Finance
Purchasing Division
455 Main Street – Room 201
Worcester, MA 01608
(508) 799-1220
www.worcesterma.gov

insurance policies. We are not a bus contractor, we are a bus dealer only selling the buses to the city. This type of insurance is not relevant to a bus dealer just selling a bus. If so, our dealership is a Rhode Island based company therefore our workers compensation insurance is a RI policy. Can we provide a RI policy for this if needed?

Answer: Yes, a workers compensation policy from Rhode Island is acceptable.

13. In number 35 you state, "The Contractor shall also carry bodily injury and property damage insurance in an amount not less than those set forth above covering the operation of all motor-powered vehicles owned or operated by the contractor and engaged in this contract." We are not a bus contractor, we are a bus dealer only selling the buses to the city. Could you clarify the relevance of this type of insurance as we are just selling a bus to the city?

Answer: Bidder is responsible for delivering all buses to City. Therefore, insurance coverage as noted in the bid invitation is required.

14. The bid requests general liability limits of \$ 2 million per occurrence and \$ 4 million aggregate. Our current insurance includes general liability limits of \$ 1 million per occurrence and \$ 2 million aggregate plus an umbrella for \$ 2 million. Can you please advise if this is acceptable?

Answer: No, you must meet the limits as noted in the bid invitation.

Bidders are requested to acknowledge and/or include this addendum with bid. All other terms, conditions and specifications remain unchanged.

Very truly yours,

Christopher J. Gagliastro
Purchasing Director

Additional vehicle / equipment clarifications - addendum # 3

STOP ARM: Items 1, 2 and 3

- DELETE:** A high intensity 3M reflective background stop arm with LED strobe lights shall be wired with school lamps
Stop arm shall not be located below an emergency push-out window
- ADD:** Fully illuminated stop arm. Must be illuminated red octagonal shape STOP sign with illuminated white letters. Must be readable beyond 300 feet and visible beyond 1,000 feet. Must be visible to 180 degrees. Must have user selectable LED flashers and strobes. Must be wired with school lamps.
Stop arm shall not be located below an emergency push-out window. Standard stop arm only. Extended stop arm is not acceptable.
- Fully illuminated "School Bus" sign installed in front and back of vehicle. Must be illuminated yellow SCHOOL BUS sign with Black letters. Must be readable beyond 300 feet and visible beyond 1,000 feet. Must be visible to 180 degrees. Must be wired with school lamps.

Additional Equipment: Items 1 and 2 (TYPE A)

- DELETE:** Installed, ten (10) brackets and ten (10) programmed tablets matching Tyler Technologies hardware currently installed on Worcester Public Schools school buses to allow for direct communication between Worcester Public Schools school bus operations office(s) and vehicles of various Tyler Technologies software products and modules owned and/or licensed to and operated by Worcester Public Schools. Location of all brackets subject to approval of the Worcester Public Schools.
- ADD:** Installed brackets and programmed tablets matching Tyler Technologies hardware currently installed on Worcester Public Schools school buses to allow for direct communication between Worcester Public Schools school bus operations office(s) and vehicles of various Tyler Technologies software products and modules owned and/or licensed to and operated by Worcester Public Schools. Location of all brackets subject to approval of the Worcester Public Schools.
- Installed GeoTabs, matching Tyler Technologies hardware currently installed on Worcester Public Schools school buses to allow for direct communication between Worcester Public Schools school bus operations office(s) and vehicles of various Tyler Technologies software products and modules owned and/or licensed to and operated by Worcester Public Schools.

Additional Equipment: Item 3 (TYPE C)

DELETE: Installed, brackets, and programmed tablets matching Tyler Technologies hardware currently installed on Worcester Public Schools school buses to allow for direct communication between Worcester Public Schools school bus operations office(s) and vehicles of various Tyler Technologies software products and modules owned and/or licensed to and operated by Worcester Public Schools, for each vehicle delivered. Location of all brackets subject to the approval of the Worcester Public Schools.

ADD: Installed, brackets, and programmed tablets matching Tyler Technologies currently installed on Worcester Public Schools school buses to allow for direct communication between Worcester Public Schools school bus operations office(s) and vehicles of various Tyler Technologies software products and modules owned and/or licensed to and operated by Worcester Public Schools, for each vehicle delivered. Location of all brackets subject to the approval of the Worcester Public Schools.

Installed GeoTabs, matching Tyler Technologies hardware currently installed on Worcester Public Schools school buses to allow for direct communication between Worcester Public Schools school bus operations office(s) and vehicles of various Tyler Technologies software products and modules owned and/or licensed to and operated by Worcester Public Schools.