

EMERGENCY GENERATOR REPLACEMENT 18-20 AND 76 EAST WORCESTER STREET

DEPARTMENT OF PUBLIC WORKS
WORCESTER, MASSACHUSETTS
BID DOCUMENTS
NOVEMBER 4, 2025
BID NO: 8486-M6

PREPARED FOR:
ERIC D. BATISTA, CITY MANAGER
JOHN K. WESTERLING, COMMISSIONER OF PUBLIC WORKS

PREPARED BY:
FITZMEYER & TOCCI ASSOCIATES INC
300 UNICORN PARK DRIVE, 5TH FLOOR
WOBURN, MA 01801



LOCUS MAP
SCALE 1:1000



DRAWING INDEX

18-20 E. WORCESTER STREET

- E000 ELECTRICAL LEGEND
- E001 ELECTRICAL LEGEND, NOTES AND ABBREVIATIONS
- E110 ELECTRICAL SITE POWER DEMOLITION PLAN
- E111 ELECTRICAL SITE POWER PLAN
- E700 EXISTING ELECTRICAL RISER DIAGRAM
- E900 ELECTRICAL SCHEDULES AND DETAILS

76 E. WORCESTER STREET

- E000 ELECTRICAL LEGEND
- E111 ELECTRICAL LEVEL 1 POWER DEMOLITION PLAN
- E311 ELECTRICAL LEVEL 1 POWER PLAN
- E700 ELECTRICAL SCHEDULES AND RISER DIAGRAM
- E900 ELECTRICAL DETAILS
- P000 PLUMBING LEGEND, NOTES AND ABBREVIATIONS
- P101 PLUMBING GAS DEMOLITION PLANS

1. ALL WALL MOUNTED DEVICES ARE TO BE MOUNTED 18" AFF UNLESS OTHERWISE NOTED.

2. COORDINATE MOUNTING HEIGHTS WITH THE ARCHITECT PRIOR TO INSTALLATION.

3. BACK BOX AND TO BE PROVIDED WITH 1" (WITH PULL STRING) RUN CONCEALED WITHIN WALL TO ABOVE FINISHED CEILING AND TERMINATING WITHIN 6" OF CABLE TRAY. WIRING AND DEVICES BY OTHERS.

3/4" THICK x 8'-0" HIGH x LENGTH AS INDICATED ON THE DRAWINGS PLYWOOD. PLYWOOD SHALL BE PAINTED GRAY AND MOUNTED TO WALL.

2-GANG BACKBOX WITH SINGLE GANG PLASTER RING AND COVERPLATE

1. COORDINATE EXACT LOCATION OF SECURITY CAMERAS AND CCTV'S WITH OWNER AND SECURITY VENDOR PRIOR TO INSTALLATION.

J-HOOK CABLE MANAGEMENT TYPICALLY MOUNTED 6" ABOVE FINISHED CEILING

CABLE TRAY (WITH FITTING)

FITTING CONDUIT TURNING UP

CONDUIT TURNING DOWN

CONDUIT STUBBED 6" ABOVE ACCESSIBLE CEILING AT 90° ANGLE WITH BUSHED END

FLEXIBLE RACEWAY

PP123 HOMERUN TO PANELBOARD "PP123", BRANCH CIRCUIT No. 5, 2#12 & 1#12G, 3/4". UNLESS OTHERWISE NOTED.

REFER TO SPECIFICATIONS FOR ADDITIONAL INFORMATION

NOTE: SIZE AND INSTALL BRANCH CIRCUIT CONDUCTORS FOR A MAXIMUM BRANCH CIRCUIT VOLTAGE DROP OF 3% FROM PANELBOARDS. TOTAL VOLTAGE DROP FROM SERVICE ENTRY TO LAST DEVICE ON THE CIRCUIT TO NOT EXCEED 5%. REFER TO SPECIFICATIONS FOR ADDITIONAL REQUIREMENTS AND OPTIONS.

NORMAL SYSTEM FEEDERS	THHN/THWN/XHHW CONDUCTORS IN EMT
EMERGENCY SYSTEM FEEDERS	MI CABLE
EQUIPMENT SYSTEM FEEDERS	THHN/THWN/XHHW CONDUCTORS IN EMT
NORMAL BRANCH CIRCUITS	THHN/THWN/XHHW CONDUCTORS IN EMT OR HOSPITAL GRADE AC CABLE
EMERGENCY SYSTEM (LIFE SAFETY AND CRITICAL) BRANCH CIRCUITS	THHN/THWN/XHHW CONDUCTORS IN EMT
NURSE CALL SYSTEM WIRING	CONDUCTORS IN EMT
TELEDATA WIRING	CAT6 WIRING IN EMT (REFER TO COMMUNICATIONS LEGEND FOR ADDITIONAL INFORMATION)

OPTIONAL TYPE DESIGNATOR

"BLANK" - TELE/DATE DEVICE WITH NO OPTION

"C" - MOUNTED 8" ABOVE WORK SURFACE OR COUNTERTOP

"H" - MOUNTED HIGH ON WALL

WALL

CLO

FIR

DATA ONLY OUTLET DEVICE

VOICE / DATA COMBINATION OUTLET DEVICE

VOICE ONLY OUTLET DEVICE

TELE/DATE NOTES

1. ALL WALL MOUNTED DEVICES ARE TO BE MOUNTED 18" AFF UNLESS OTHERWISE NOTED.

2. COORDINATE MOUNTING HEIGHTS WITH THE ARCHITECT PRIOR TO INSTALLATION.

3. BACK BOX AND TO BE PROVIDED WITH 1" (WITH PULL STRING) RUN CONCEALED WITHIN WALL TO ABOVE FINISHED CEILING AND TERMINATING WITHIN 6" OF CABLE TRAY. WIRING AND DEVICES BY OTHERS.

DEVICE SYMBOLS

3/4" THICK x 8'-0" HIGH x LENGTH AS INDICATED ON THE DRAWINGS PLYWOOD. PLYWOOD SHALL BE PAINTED GRAY AND MOUNTED TO WALL.

2-GANG BACKBOX WITH SINGLE GANG PLASTER RING AND COVERPLATE

COMMUNICATION DEVICE NOTES

1. COORDINATE EXACT LOCATION OF SECURITY CAMERAS AND CCTV'S WITH OWNER AND SECURITY VENDOR PRIOR TO INSTALLATION.

WIRING METHODS

REFER TO SPECIFICATIONS FOR ADDITIONAL INFORMATION

NOTE: SIZE AND INSTALL BRANCH CIRCUIT CONDUCTORS FOR A MAXIMUM BRANCH CIRCUIT VOLTAGE DROP OF 3% FROM PANELBOARDS. TOTAL VOLTAGE DROP FROM SERVICE ENTRY TO LAST DEVICE ON THE CIRCUIT TO NOT EXCEED 5%. REFER TO SPECIFICATIONS FOR ADDITIONAL REQUIREMENTS AND OPTIONS.

NORMAL SYSTEM FEEDERS	THHN/THWN/XHHW CONDUCTORS IN EMT
EMERGENCY SYSTEM FEEDERS	MI CABLE
EQUIPMENT SYSTEM FEEDERS	THHN/THWN/XHHW CONDUCTORS IN EMT
NORMAL BRANCH CIRCUITS	THHN/THWN/XHHW CONDUCTORS IN EMT OR HOSPITAL GRADE AC CABLE
EMERGENCY SYSTEM (LIFE SAFETY AND CRITICAL) BRANCH CIRCUITS	THHN/THWN/XHHW CONDUCTORS IN EMT
NURSE CALL SYSTEM WIRING	CONDUCTORS IN EMT
TELEDATA WIRING	CAT6 WIRING IN EMT (REFER TO COMMUNICATIONS LEGEND FOR ADDITIONAL INFORMATION)

"BUILDING NUMBER"

"CR" - CRITICAL

"LS" - LIFE SAFETY

"EQ" - EQUIPMENT BRANCH

"E" - EMERGENCY

"LX" - LEGAL STANDBY

"OX" - OPTIONAL STANDBY

"S" - SWITCHBOARD

"D" - DISTRIBUTION PANEL

"L" - LIGHTING

"M" - MECHANICAL

"K" - KITCHEN PANEL

"P" - POWER

FLOOR

SEQUENTIAL PANEL NUMBER PER FLOOR

"NOTE: PANEL NAMES MAY NOT USE ALL TAG LANGUAGE."

FLUSH MOUNTED PANELBOARD

SURFACE MOUNTED PANELBOARD

240/ 208/ 120V PANELBOARD

600/ 480/ 277V PANELBOARD

240/ 208/ 120V DISTRIBUTION BOARD

600/ 480/ 277V DISTRIBUTION BOARD

DISCONNECT SWITCH - NEMA 1 ENCLOSURE - UNFUSED

DISCONNECT SWITCH - NEMA 1 ENCLOSURE - FUSED

30A/3P UNLESS OTHERWISE NOTED

60AS - DENOTES SWITCH AMPERAGE RATING

40AF - DENOTES FUSE AMPERAGE RATING

3P - DENOTES 3-POLE

MANUAL MOTOR STARTER - INTEGRAL THERMAL PROTECTION

VARIABLE FREQUENCY DRIVE

DRY TYPE TRANSFORMER

- SIZE, REFER TO TRANSFORMER SCHEDULE

GENERATOR ANNUNCIATOR PANEL

ATS ANNUNCIATOR PANEL

HANDHOLE

ELECTRIC MANHOLE

TELEPHONE / DATA MANHOLE

ELECTRIC HANDHOLE

TELEPHONE / DATA HANDHOLE

UTILITY SERVICE METER

UTILITY POLE

LIGHTING CONTACTOR

TIME CLOCK

EMERGENCY CALL

"T"- DENOTES TOILET/ DRESSING ROOM STATION LOCATION, WALL, MOUNTED DEVICE WITH PULLCORD.

"S"- DENOTES SHOWER STATION LOCATION, WALL MOUNTED DEVICE WITH PULLCORD.

"MS"- DENOTES EMERGENCY CALL SYSTEM MASTER STATION

DENOTES EMERGENCY CALL SYSTEM ANNUNCIATOR STATION

DOME LIGHT LOCATION - CEILING OR WALL AS DIRECTED BY ARCHITECT OR HOSPITAL PERSONNEL.

OPTIONAL TYPE DESIGNATOR

"BLANK" - JUNCTION BOX WITH NO OPTION

"ADO" - AUTOMATIC DOOR OPERATOR

"ATC" - AUTOMATIC TEMPERATURE CONTROLS

"JB" - JUNCTION BOX WITH BLANK COVER

"CCTV" - CLOSED CIRCUIT SECURITY CAMERA

"ELF" - ELECTRONIC FAUCET OR FLUSH VALVE

"EM" - EMERGENCY POWER CIRCUIT AS INDICATED

"EWC" - ELECTRIC WATER COOLER

"NM" - NORMAL POWER CIRCUIT AS INDICATED

"PS" - MOTORIZED PROJECTION SCREEN

"SEC" - SECURITY DEVICES

"TID" - TEL/DATE WIRING

"USB" - COMBINATION USB DEVICE

"BAT" - BATTERY CHARGER

WALL

CLO

FIR

JUNCTION BOX

TRIPLE CHANNEL, SURFACE MOUNTED, ALUMINUM RACEWAY, DUAL COVER WIREMOLD WAL/450 SERIES OR APPROVED EQUAL. RACEWAY TO BE MOUNTED 6" ABOVE WORK SURFACE OR AS DIRECTED BY OWNER/ARCHITECT. PRE-WIRED, WITH DUPLEX NEMA 5-20R RECEPTACLES FOR NORMAL POWER, (RED RECEPTACLES FOR EMERGENCY), AND VOICE/DATA PROVISION LOCATIONS. NORMAL POWER DEVICES 24" ON CENTER, EMERGENCY POWER DEVICES 48" ON CENTER, AND TELE/DATE LOCATIONS 48" ON CENTER, UNLESS OTHERWISE NOTED.

ENCLOSED CIRCUIT BREAKER - NEMA 1 ENCLOSURE

PULL BOX

PUSHBUTTON - REFER TO ARCHITECT'S DOOR HARDWARE SCHEDULE FOR EXACT REQUIREMENTS

"ADO" - AUTOMATIC DOOR OPENER

"EPO" - EMERGENCY PUSH OFF

GROUNDING COUNTERPOISE - (3) COPPER GROUND RODS AT 10'-0" ON CENTER

GROUNDING CONDUCTOR, 1/8 CU GND MINIMUM - UNLESS NOTED OTHERWISE

GROUND ROD

GROUND BAR - 2" x 1/4" THICK x 18", MOUNTED 24" AFF WITH 2" SPACE BETWEEN GROUND BUS AND WALL

GROUNDING ELECTRODE CONDUCTOR OF SEPARATELY DERIVED SYSTEM.

ELECTRICAL CONTRACTOR SHALL REFER TO THE MECHANICAL, PLUMBING, AND FIRE PROTECTION DRAWINGS AND SPECIFICATIONS FOR LOCATIONS AND QUANTITIES OF EQUIPMENT RELEASED TO EACH TRADE.

PROVIDED BY ELECTRICAL CONTRACTOR

PROVIDED BY MECHANICAL CONTRACTOR

OPTIONAL TYPE DESIGNATOR

"BLANK" - RECEPTACLE WITH NO OPTION

"GFI" - GROUND FAULT INTERRUPTER

"C" - MOUNTED 8" ABOVE WORK SURFACE OR COUNTERTOP

"REF" - MOUNTED AT 48" FOR FULL-HEIGHT REFRIGERATOR

"UC" - MOUNTED UNDER CABINET

"WP" - WEATHERPROOF TYPE: NEMA 3R MINIMUM

"WR" - WEATHER RESISTANT DEVICE AND IN-USE COVER

"TR" - TAMPER RESISTANT

"USB" - COMBINATION USB DEVICE

"CP" - RECEPTACLE MOUNTED IN CEILING FOR PROJECTOR

"PT" - 2 HOUR FIRE RATED POKE-THROUGH

"TV" - MOUNTED HIGH ON WALL BEHIND TELEVISION.

"H" - MOUNTED HIGH ON WALL

"HS" - HALF SWITCHED

"USB" - COMBINATION USB/DUPLEX RECEPTACLE

WALL

CLO

FIR

RECEPTACLE BRANCH CIRCUIT NUMBER

DUPLEX RECEPTACLE

DOUBLE DUPLEX RECEPTACLE

SINGLE RECEPTACLE

DUPLEX RECEPTACLE, ON GENERATOR

DOUBLE DUPLEX RECEPTACLE, ON GENERATOR

SINGLE RECEPTACLE, ON GENERATOR

HOSPITAL GRADE, DUPLEX RECEPTACLE

HOSPITAL GRADE, DOUBLE DUPLEX RECEPTACLE

HOSPITAL GRADE, DUPLEX RECEPTACLE, ON GENERATOR

HOSPITAL GRADE, DOUBLE DUPLEX RECEPTACLE, ON GENERATOR

SPECIAL PURPOSE RECEPTACLE NEMA TYPE AS INDICATED ON THE PLANS

RECEPTACLE NOTES

1. ALL RECEPTACLES ARE MOUNTED 18" AFF UNLESS OTHERWISE NOTED.

2. COORDINATE MOUNTING HEIGHTS WITH THE ARCHITECT PRIOR TO INSTALLATION.

3. ALL RECEPTACLES SHALL BE NEMA 5-20R UNLESS OTHERWISE NOTED.

4. PROVIDE ALL RECEPTACLES WITHIN 8'-0" OF A SINK WITH GFCI PROTECTION

5. ALL RECEPTACLES WITHIN PATIENT ACCESSIBLE AREAS SHALL BE TAMPERPROOF TYPE DEVICES.

6. PROVIDE TAMPERPROOF RECEPTACLES IN ALL CHILD CARE FACILITIES, PRESCHOOLS AND EDUCATION FACILITIES, DORMITORY UNITS, AND WITHIN BUSINESS OFFICES / CORRIDORS / WAITING ROOMS ETC. WITHIN CLINICS / MEDICAL OFFICES / OUTPATIENT FACILITIES.

OPTIONAL TYPE DESIGNATOR

"BLANK" - JUNCTION BOX WITH NO OPTION

"ADO" - AUTOMATIC DOOR OPERATOR

"ATC" - AUTOMATIC TEMPERATURE CONTROLS

"JB" - JUNCTION BOX WITH BLANK COVER

"CCTV" - CLOSED CIRCUIT SECURITY CAMERA

"ELF" - ELECTRONIC FAUCET OR FLUSH VALVE

"EM" - EMERGENCY POWER CIRCUIT AS INDICATED

"EWC" - ELECTRIC WATER COOLER

"NM" - NORMAL POWER CIRCUIT AS INDICATED

"PS" - MOTORIZED PROJECTION SCREEN

"SEC" - SECURITY DEVICES

"TID" - TEL/DATE WIRING

"USB" - COMBINATION USB DEVICE

"BAT" - BATTERY CHARGER

WALL

CLO

FIR

JUNCTION BOX

TRIPLE CHANNEL, SURFACE MOUNTED, ALUMINUM RACEWAY, DUAL COVER WIREMOLD WAL/450 SERIES OR APPROVED EQUAL. RACEWAY TO BE MOUNTED 6" ABOVE WORK SURFACE OR AS DIRECTED BY OWNER/ARCHITECT. PRE-WIRED, WITH DUPLEX NEMA 5-20R RECEPTACLES FOR NORMAL POWER, (RED RECEPTACLES FOR EMERGENCY), AND VOICE/DATA PROVISION LOCATIONS. NORMAL POWER DEVICES 24" ON CENTER, EMERGENCY POWER DEVICES 48" ON CENTER, AND TELE/DATE LOCATIONS 48" ON CENTER, UNLESS OTHERWISE NOTED.

ENCLOSED CIRCUIT BREAKER - NEMA 1 ENCLOSURE

PULL BOX

PUSHBUTTON - REFER TO ARCHITECT'S DOOR HARDWARE SCHEDULE FOR EXACT REQUIREMENTS

"ADO" - AUTOMATIC DOOR OPENER

"EPO" - EMERGENCY PUSH OFF

GROUNDING COUNTERPOISE - (3) COPPER GROUND RODS AT 10'-0" ON CENTER

GROUNDING CONDUCTOR, 1/8 CU GND MINIMUM - UNLESS NOTED OTHERWISE

GROUND ROD

GROUND BAR - 2" x 1/4" THICK x 18", MOUNTED 24" AFF WITH 2" SPACE BETWEEN GROUND BUS AND WALL

GROUNDING ELECTRODE CONDUCTOR OF SEPARATELY DERIVED SYSTEM.

ELECTRICAL CONTRACTOR SHALL REFER TO THE MECHANICAL, PLUMBING, AND FIRE PROTECTION DRAWINGS AND SPECIFICATIONS FOR LOCATIONS AND QUANTITIES OF EQUIPMENT RELEASED TO EACH TRADE.

PROVIDED BY ELECTRICAL CONTRACTOR

PROVIDED BY MECHANICAL CONTRACTOR

OPTIONAL TYPE DESIGNATOR

"LP" - LIGHTING PENDENT

"LD" - LIGHTING DOWNLIGHT

"LS" - LIGHTING SURFACE MOUNTED

"LR" - LIGHTING RECESSED

"SL" - SITE LIGHTING

"NL" - NIGHT LIGHT

WALL

CLO

FIR

RECEPTACLE BRANCH CIRCUIT NUMBER

1,2,3 ETC. - NUMERAL TYPE DESIGNATOR

"BLANK" - NORMAL POWER

"E" - PROVIDED WITH EMERGENCY BATTERY

WALL

CLO

FIR

RECEPTACLE BRANCH CIRCUIT NUMBER

1,2,3 ETC. - NUMERAL TYPE DESIGNATOR

"BLANK" - NORMAL POWER

"E" - PROVIDED WITH EMERGENCY BATTERY

WALL

CLO

FIR

RECEPTACLE BRANCH CIRCUIT NUMBER

1,2,3 ETC. - NUMERAL TYPE DESIGNATOR

"BLANK" - NORMAL POWER

"E" - PROVIDED WITH EMERGENCY BATTERY

WALL

CLO

FIR

RECEPTACLE BRANCH CIRCUIT NUMBER

1,2,3 ETC. - NUMERAL TYPE DESIGNATOR

"BLANK" - NORMAL POWER

"E" - PROVIDED WITH EMERGENCY BATTERY

WALL

CLO

FIR

RECEPTACLE BRANCH CIRCUIT NUMBER

1,2,3 ETC. - NUMERAL TYPE DESIGNATOR

"BLANK" - NORMAL POWER

"E" - PROVIDED WITH EMERGENCY BATTERY

WALL

CLO

FIR

RECEPTACLE BRANCH CIRCUIT NUMBER

1,2,3 ETC. - NUMERAL TYPE DESIGNATOR

"BLANK" - NORMAL POWER

"E" - PROVIDED WITH EMERGENCY BATTERY

WALL

CLO

FIR

RECEPTACLE BRANCH CIRCUIT NUMBER

1,2,3 ETC. - NUMERAL TYPE DESIGNATOR

"BLANK" - NORMAL POWER

"E" - PROVIDED WITH EMERGENCY BATTERY

WALL

CLO

FIR

RECEPTACLE BRANCH CIRCUIT NUMBER

1,2,3 ETC. - NUMERAL TYPE DESIGNATOR

"BLANK" - NORMAL POWER

"E" - PROVIDED WITH EMERGENCY BATTERY

WALL

CLO

FIR

RECEPTACLE BRANCH CIRCUIT NUMBER

1,2,3 ETC. - NUMERAL TYPE DESIGNATOR

"BLANK" - NORMAL POWER

"E" - PROVIDED WITH EMERGENCY BATTERY

WALL

CLO

FIR

RECEPTACLE BRANCH CIRCUIT NUMBER

1,2,3 ETC. - NUMERAL TYPE DESIGNATOR

"BLANK" - NORMAL POWER

"E" - PROVIDED WITH EMERGENCY BATTERY

WALL

CLO

FIR

RECEPTACLE BRANCH CIRCUIT NUMBER

1,2,3 ETC. - NUMERAL TYPE DESIGNATOR

"BLANK" - NORMAL POWER

"E" - PROVIDED WITH EMERGENCY BATTERY

WALL

CLO

FIR

RECEPTACLE BRANCH CIRCUIT NUMBER

1,2,3 ETC. - NUMERAL TYPE DESIGNATOR

"BLANK" - NORMAL POWER

"E" - PROVIDED WITH EMERGENCY BATTERY

WALL

CLO

FIR

RECEPTACLE BRANCH CIRCUIT NUMBER

1,2,3 ETC. - NUMERAL TYPE DESIGNATOR

"BLANK" - NORMAL POWER

"E" - PROVIDED WITH EMERGENCY BATTERY

WALL

CLO

FIR

RECEPTACLE BRANCH CIRCUIT NUMBER

1,2,3 ETC. - NUMERAL TYPE DESIGNATOR

"BLANK" - NORMAL POWER

"E" - PROVIDED WITH EMERGENCY BATTERY

WALL

CLO

FIR

RECEPTACLE BRANCH CIRCUIT NUMBER

1,2,3 ETC. - NUMERAL TYPE DESIGNATOR

"BLANK" - NORMAL POWER

"E" - PROVIDED WITH EMERGENCY BATTERY

WALL

CLO

FIR

RECEPTACLE BRANCH CIRCUIT NUMBER

1,2,3 ETC. - NUMERAL TYPE DESIGNATOR

"BLANK" - NORMAL POWER

"E" - PROVIDED WITH EMERGENCY BATTERY

WALL

CLO

FIR

RECEPTACLE BRANCH CIRCUIT NUMBER

1,2,3 ETC. - NUMERAL TYPE DESIGNATOR

"BLANK" - NORMAL POWER

"E" - PROVIDED WITH EMERGENCY BATTERY

WALL

CLO

FIR

RECEPTACLE BRANCH CIRCUIT NUMBER

1,2,3 ETC. - NUMERAL TYPE DESIGNATOR

"BLANK" - NORMAL POWER

"E" - PROVIDED WITH EMERGENCY BATTERY

WALL

CLO

FIR

RECEPTACLE BRANCH CIRCUIT NUMBER

1,2,3 ETC. - NUMERAL TYPE DESIGNATOR

"BLANK" - NORMAL POWER

"E" - PROVIDED WITH EMERGENCY BATTERY

WALL

CLO

FIR

RECEPTACLE BRANCH CIRCUIT NUMBER

1,2,3 ETC. - NUMERAL TYPE DESIGNATOR

"BLANK" - NORMAL POWER

"E" - PROVIDED WITH EMERGENCY BATTERY

WALL

CLO

FIR

RECEPTACLE BRANCH CIRCUIT NUMBER

1,2,3 ETC. - NUMERAL TYPE DESIGNATOR

"BLANK" - NORMAL POWER

"E" - PROVIDED WITH EMERGENCY BATTERY

WALL

CLO

FIR

RECEPTACLE BRANCH CIRCUIT NUMBER

1,2,3 ETC. - NUMERAL TYPE DESIGNATOR

"BLANK" - NORMAL POWER

"E" - PROVIDED WITH EMERGENCY BATTERY

WALL

CLO

FIR

RECEPTACLE BRANCH CIRCUIT NUMBER

1,2,3 ETC. - NUMERAL TYPE DESIGNATOR

"BLANK" - NORMAL POWER

"E" - PROVIDED WITH EMERGENCY BATTERY

WALL

CLO

FIR

RECEPTACLE BRANCH CIRCUIT NUMBER

1,2,3 ETC. - NUMERAL TYPE DESIGNATOR

"BLANK" - NORMAL POWER

"E" - PROVIDED WITH EMERGENCY BATTERY

WALL

CLO

FIR

RECEPTACLE BRANCH CIRCUIT NUMBER

1,2,3 ETC. - NUMERAL TYPE DESIGNATOR

"BLANK" - NORMAL POWER

"E" - PROVIDED WITH EMERGENCY BATTERY

WALL

CLO

FIR

RECEPTACLE BRANCH CIRCUIT NUMBER

1,2,3 ETC. - NUMERAL TYPE DESIGNATOR

"BLANK" - NORMAL POWER

"E" - PROVIDED WITH EMERGENCY BATTERY

WALL

CLO

FIR

RECEPTACLE BRANCH CIRCUIT NUMBER

1,2,3 ETC. - NUMERAL TYPE DESIGNATOR

"BLANK" - NORMAL POWER

"E" - PROVIDED WITH EMERGENCY BATTERY

WALL

CLO

FIR

RECEPTACLE BRANCH CIRCUIT NUMBER

1,2,3 ETC. - NUMERAL TYPE DESIGNATOR

"BLANK" - NORMAL POWER

"E" - PROVIDED WITH EMERGENCY BATTERY

WALL

CLO

FIR

RECEPTACLE BRANCH CIRCUIT NUMBER

1,2,3 ETC. - NUMERAL TYPE DESIGNATOR

"BLANK" - NORMAL POWER

"E" - PROVIDED WITH EMERGENCY BATTERY

WALL

CLO

FIR

RECEPTACLE BRANCH CIRCUIT NUMBER

1,2,3 ETC. - NUMERAL TYPE DESIGNATOR

"BLANK" - NORMAL POWER

"E" - PROVIDED WITH EMERGENCY BATTERY

WALL

CLO

FIR

RECEPTACLE BRANCH CIRCUIT NUMBER

1,2,3 ETC. - NUMERAL TYPE DESIGNATOR

"BLANK" - NORMAL POWER

"E" - PROVIDED WITH EMERGENCY BATTERY

WALL

CLO

FIR

RECEPTACLE BRANCH CIRCUIT NUMBER

1,2,3 ETC. - NUMERAL TYPE DESIGNATOR

"BLANK" - NORMAL POWER

"E" - PROVIDED WITH EMERGENCY BATTERY

WALL

CLO

FIR

RECEPTACLE BRANCH CIRCUIT NUMBER

1,2,3 ETC. - NUMERAL TYPE DESIGNATOR

"BLANK" - NORMAL POWER

"E" - PROVIDED WITH EMERGENCY BATTERY

WALL

CLO

FIR

RECEPTACLE BRANCH CIRCUIT NUMBER

1,2,3 ETC. - NUMERAL TYPE DESIGNATOR

"BLANK" - NORMAL POWER

"E" - PROVIDED WITH EMERGENCY BATTERY

WALL

CLO

FIR

RECEPTACLE BRANCH CIRCUIT NUMBER

1,2,3 ETC. - NUMERAL TYPE DESIGNATOR

"BLANK" - NORMAL POWER

"E" - PROVIDED WITH EMERGENCY BATTERY

WALL

CLO

FIR

RECEPTACLE BRANCH CIRCUIT NUMBER

1,2,3 ETC. - NUMERAL TYPE DESIGNATOR

"BLANK" - NORMAL POWER

"E" - PROVIDED WITH EMERGENCY BATTERY

WALL

CLO

FIR

RECEPTACLE BRANCH CIRCUIT NUMBER

1,2,3 ETC. - NUMERAL TYPE DESIGNATOR

"BLANK" - NORMAL POWER

"E" - PROVIDED WITH EMERGENCY BATTERY

WALL

CLO

FIR

RECEPTACLE BRANCH CIRCUIT NUMBER

1,2,3 ETC. - NUMERAL TYPE DESIGNATOR

"BLANK" - NORMAL POWER

"E" - PROVIDED WITH EMERGENCY BATTERY

WALL

CLO

FIR

RECEPTACLE BRANCH CIRCUIT NUMBER

1,2,3 ETC. - NUMERAL TYPE DESIGNATOR

"BLANK" - NORMAL POWER

"E" - PROVIDED WITH EMERGENCY BATTERY

WALL

CLO

FIR

RECEPTACLE BRANCH CIRCUIT NUMBER

1,2,3 ETC. - NUMERAL TYPE DESIGNATOR

"BLANK" - NORMAL POWER

"E" - PROVIDED WITH EMERGENCY BATTERY

WALL

CLO

FIR

RECEPTACLE BRANCH CIRCUIT NUMBER

1,2,3 ETC. - NUMERAL TYPE DESIGNATOR

"BLANK" - NORMAL POWER

"E" - PROVIDED WITH EMERGENCY BATTERY

WALL

CLO

FIR

RECEPTACLE BRANCH CIRCUIT NUMBER

1,2,3 ETC. - NUMERAL TYPE DESIGNATOR

"BLANK" - NORMAL POWER

"E" - PROVIDED WITH EMERGENCY BATTERY

WALL

CLO

FIR

RECEPTACLE BRANCH CIRCUIT NUMBER

1,2,3 ETC. - NUMERAL TYPE DESIGNATOR

"BLANK" - NORMAL POWER

"E" - PROVIDED WITH EMERGENCY BATTERY

WALL

CLO

FIR

RECEPTACLE BRANCH CIRCUIT NUMBER

1,2,3 ETC. - NUMERAL TYPE DESIGNATOR

"BLANK" - NORMAL POWER

"E" - PROVIDED WITH EMERGENCY BATTERY

WALL

CLO

FIR

RECEPTACLE BRANCH CIRCUIT NUMBER

1,2,3 ETC. - NUMERAL TYPE DESIGNATOR

"BLANK" - NORMAL POWER

"E" - PROVIDED WITH EMERGENCY BATTERY

WALL

CLO

FIR

RECEPTACLE BRANCH CIRCUIT NUMBER

1,2,3 ETC. - NUMERAL TYPE DESIGNATOR

"BLANK" - NORMAL POWER

"E" - PROVIDED WITH EMERGENCY BATTERY

WALL

CLO

FIR

RECEPTACLE BRANCH CIRCUIT NUMBER

1,2,3 ETC. - NUMERAL TYPE DESIGNATOR

"BLANK" - NORMAL POWER

"E" - PROVIDED WITH EMERGENCY BATTERY

WALL

CLO

FIR

RECEPTACLE BRANCH CIRCUIT NUMBER

1,2,3 ETC. - NUMERAL TYPE DESIGNATOR

"BLANK" - NORMAL POWER

"E" - PROVIDED WITH EMERGENCY BATTERY

WALL

CLO

FIR

RECEPTACLE BRANCH CIRCUIT NUMBER

1,2,3 ETC. - NUMERAL TYPE DESIGNATOR

"BLANK" - NORMAL POWER

"E" - PROVIDED WITH EMERGENCY BATTERY

WALL

CLO

FIR

RECEPTACLE BRANCH CIRCUIT NUMBER

1,2,3 ETC. - NUMERAL TYPE DESIGNATOR

"BLANK" - NORMAL POWER

"E" - PROVIDED WITH EMERGENCY BATTERY

WALL

CLO

FIR

RECEPTACLE BRANCH CIRCUIT NUMBER

1,2,3 ETC. - NUMERAL TYPE DESIGNATOR

"BLANK" - NORMAL POWER

"E" - PROVIDED WITH EMERGENCY BATTERY

WALL

CLO

FIR

RECEPTACLE BRANCH CIRCUIT NUMBER

1,2,3 ETC. - NUMERAL TYPE DESIGNATOR

"BLANK" - NORMAL POWER

"E" - PROVIDED WITH EMERGENCY BATTERY

WALL

CLO

FIR

RECEPTACLE BRANCH CIRCUIT NUMBER

1,2,3 ETC. - NUMERAL TYPE DESIGNATOR

"BLANK" - NORMAL POWER

"E" - PROVIDED WITH EMERGENCY BATTERY

WALL

CLO

FIR

RECEPTACLE BRANCH CIRCUIT NUMBER

1,2,3 ETC. - NUMERAL TYPE DESIGNATOR

"BLANK" - NORMAL POWER

"E" - PROVIDED WITH EMERGENCY BATTERY

WALL

CLO

FIR

RECEPTACLE BRANCH CIRCUIT NUMBER

1,2,3 ETC. - NUMERAL TYPE DESIGNATOR

"BLANK" - NORMAL POWER

"E" - PROVIDED WITH EMERGENCY BATTERY

WALL

CLO

FIR

RECEPTACLE BRANCH CIRCUIT NUMBER

1,2,3 ETC. - NUMERAL TYPE DESIGNATOR

"BLANK" - NORMAL POWER

"E" - PROVIDED WITH EMERGENCY BATTERY

WALL

CLO

FIR

RECEPTACLE BRANCH CIRCUIT NUMBER

1,2,3 ETC. - NUMERAL TYPE DESIGNATOR

"BLANK" - NORMAL POWER

"E" - PROVIDED WITH EMERGENCY BATTERY

WALL

CLO

FIR

RECEPTACLE BRANCH CIRCUIT NUMBER

1,2,3 ETC. - NUMERAL TYPE DESIGNATOR

"BLANK" - NORMAL POWER

"E" - PROVIDED WITH EMERGENCY BATTERY

WALL

CLO

FIR

RECEPTACLE BRANCH CIRCUIT NUMBER

1,2,3 ETC. - NUMERAL TYPE DESIGNATOR

"BLANK" - NORMAL POWER

"E" - PROVIDED WITH EMERGENCY BATTERY

WALL

CLO

FIR

RECEPTACLE BRANCH CIRCUIT NUMBER

1,2,3 ETC. - NUMERAL TYPE DESIGNATOR

"BLANK" - NORMAL POWER

"E" - PROVIDED WITH EMERGENCY BATTERY

WALL

CLO

FIR

RECEPTACLE BRANCH CIRCUIT NUMBER

1,2,3 ETC. - NUMERAL TYPE DESIGNATOR

"BLANK" - NORMAL POWER

"E" - PROVIDED WITH EMERGENCY BATTERY

WALL

CLO

FIR

RECEPTACLE BRANCH CIRCUIT NUMBER

1,2,3 ETC. - NUMERAL TYPE DESIGNATOR

"BLANK" - NORMAL POWER

"E" - PROVIDED WITH EMERGENCY BATTERY

WALL

CLO

FIR

RECEPTACLE BRANCH CIRCUIT NUMBER

1,2,3 ETC. - NUMERAL TYPE DESIGNATOR

"BLANK" - NORMAL POWER

"E" - PROVIDED WITH EMERGENCY BATTERY

WALL

CLO

FIR

RECEPTACLE BRANCH CIRCUIT NUMBER

1,2,3 ETC. - NUMERAL TYPE DESIGNATOR

"BLANK" - NORMAL POWER

"E" - PROVIDED WITH EMERGENCY BATTERY

WALL

CLO

FIR

RECEPTACLE BRANCH CIRCUIT NUMBER

1,2,3 ETC. - NUMERAL TYPE DESIGNATOR

"BLANK" - NORMAL POWER

"E" - PROVIDED WITH EMERGENCY BATTERY

WALL

CLO

FIR

RECEPTACLE BRANCH CIRCUIT NUMBER

1,2,3 ETC. - NUMERAL TYPE DESIGNATOR

"BLANK" - NORMAL POWER

"E" - PROVIDED WITH EMERGENCY BATTERY

WALL

CLO

FIR

RECEPTACLE BRANCH CIRCUIT NUMBER

1,2,3 ETC. - NUMERAL TYPE DESIGNATOR

"BLANK" - NORMAL POWER

"E" - PROVIDED WITH EMERGENCY BATTERY

WALL

CLO

FIR

RECEPTACLE BRANCH CIRCUIT NUMBER

1,2,3 ETC. - NUMERAL TYPE DESIGNATOR

"BLANK" - NORMAL POWER

"E" - PROVIDED WITH EMERGENCY BATTERY

WALL

CLO

FIR

RECEPTACLE BRANCH CIRCUIT NUMBER

1,2,3 ETC. - NUMERAL TYPE DESIGNATOR

"BLANK" - NORMAL POWER

"E" - PROVIDED WITH EMERGENCY BATTERY

WALL

CLO

FIR

RECEPTACLE BRANCH CIRCUIT NUMBER

1,2,3 ETC. - NUMERAL TYPE DESIGNATOR

"BLANK" - NORMAL POWER

"E" - PROVIDED WITH EMERGENCY BATTERY

WALL

CLO

FIR

RECEPTACLE BRANCH CIRCUIT NUMBER

1,2,3 ETC. - NUMERAL TYPE DESIGNATOR

"BLANK" - NORMAL POWER

"E" - PROVIDED WITH EMERGENCY BATTERY

WALL

CLO

FIR

RECEPTACLE BRANCH CIRCUIT NUMBER

1,2,3 ETC. - NUMERAL TYPE DESIGNATOR

"BLANK" - NORMAL POWER

"E" - PROVIDED WITH EMERGENCY BATTERY

WALL

CLO

FIR

RECEPTACLE BRANCH CIRCUIT NUMBER

1,2,3 ETC. - NUMERAL TYPE DESIGNATOR

"BLANK" - NORMAL POWER

"E" - PROVIDED WITH EMERGENCY BATTERY

WALL

CLO

FIR

RECEPTACLE BRANCH CIRCUIT NUMBER

1,2,3 ETC. - NUMERAL TYPE DESIGNATOR

"BLANK" - NORMAL POWER

"E" - PROVIDED WITH EMERGENCY BATTERY

WALL

CLO

FIR

RECEPTACLE BRANCH CIRCUIT NUMBER

1,2,3 ETC. - NUMERAL TYPE DESIGNATOR

"BLANK" - NORMAL POWER

"E" - PROVIDED WITH EMERGENCY BATTERY

WALL

CLO

FIR

RECEPTACLE BRANCH CIRCUIT NUMBER

1,2,3 ETC. - NUMERAL TYPE DESIGNATOR

"BLANK" - NORMAL POWER

"E" - PROVIDED WITH EMERGENCY BATTERY

WALL

CLO

FIR

RECEPTACLE BRANCH CIRCUIT NUMBER

1,2,3 ETC. - NUMERAL TYPE DESIGNATOR

"BLANK" - NORMAL POWER

"E" - PROVIDED WITH EMERGENCY BATTERY

WALL

CLO

FIR

RECEPTACLE BRANCH CIRCUIT NUMBER

1,2,3 ETC. - NUMERAL TYPE DESIGNATOR

"BLANK" - NORMAL POWER

"E" - PROVIDED WITH EMERGENCY BATTERY

WALL

CLO



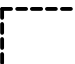
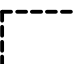
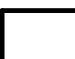
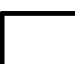
FIR

RECEPTACLE BRANCH CIRCUIT NUMBER

1,2,3 ETC. - NUMERAL TYPE DESIGNATOR

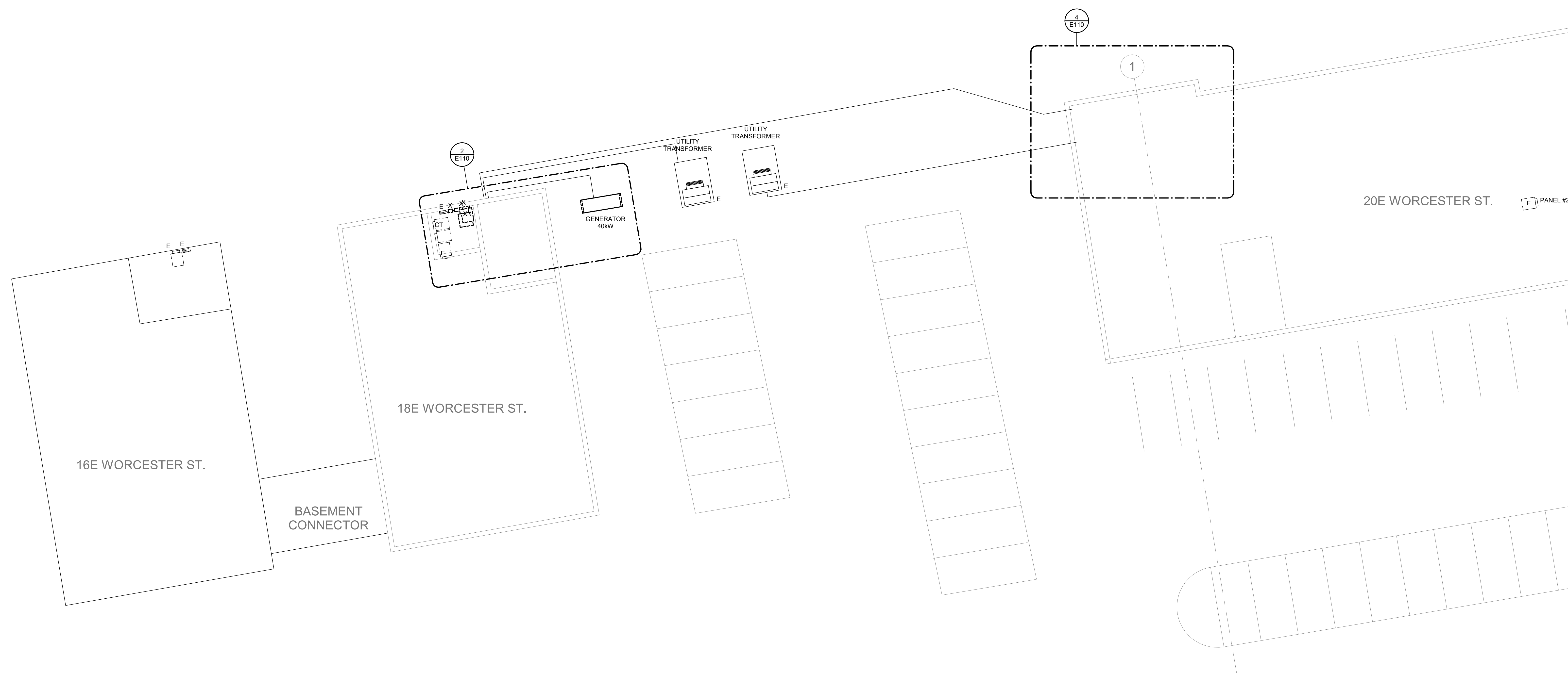
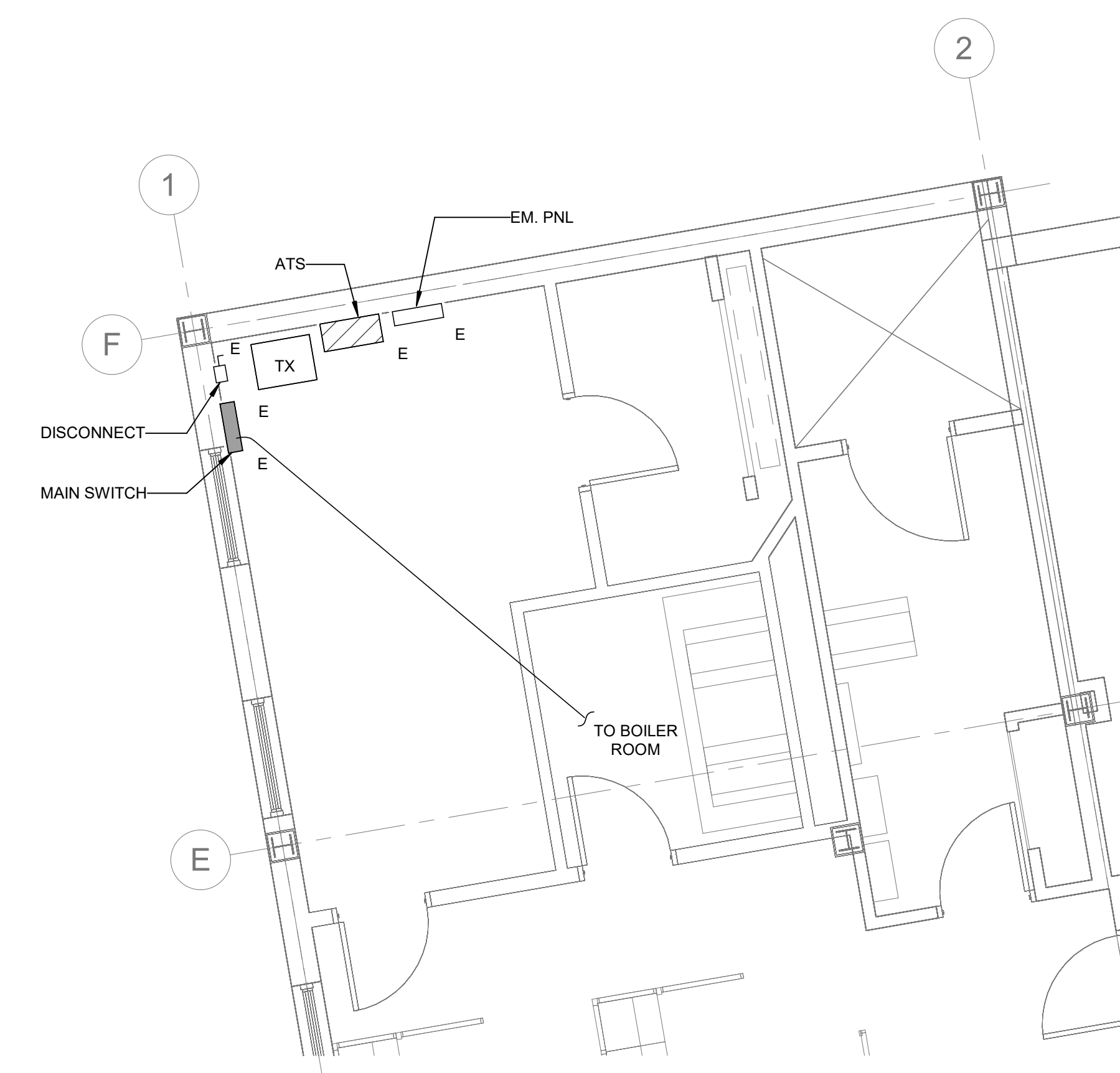
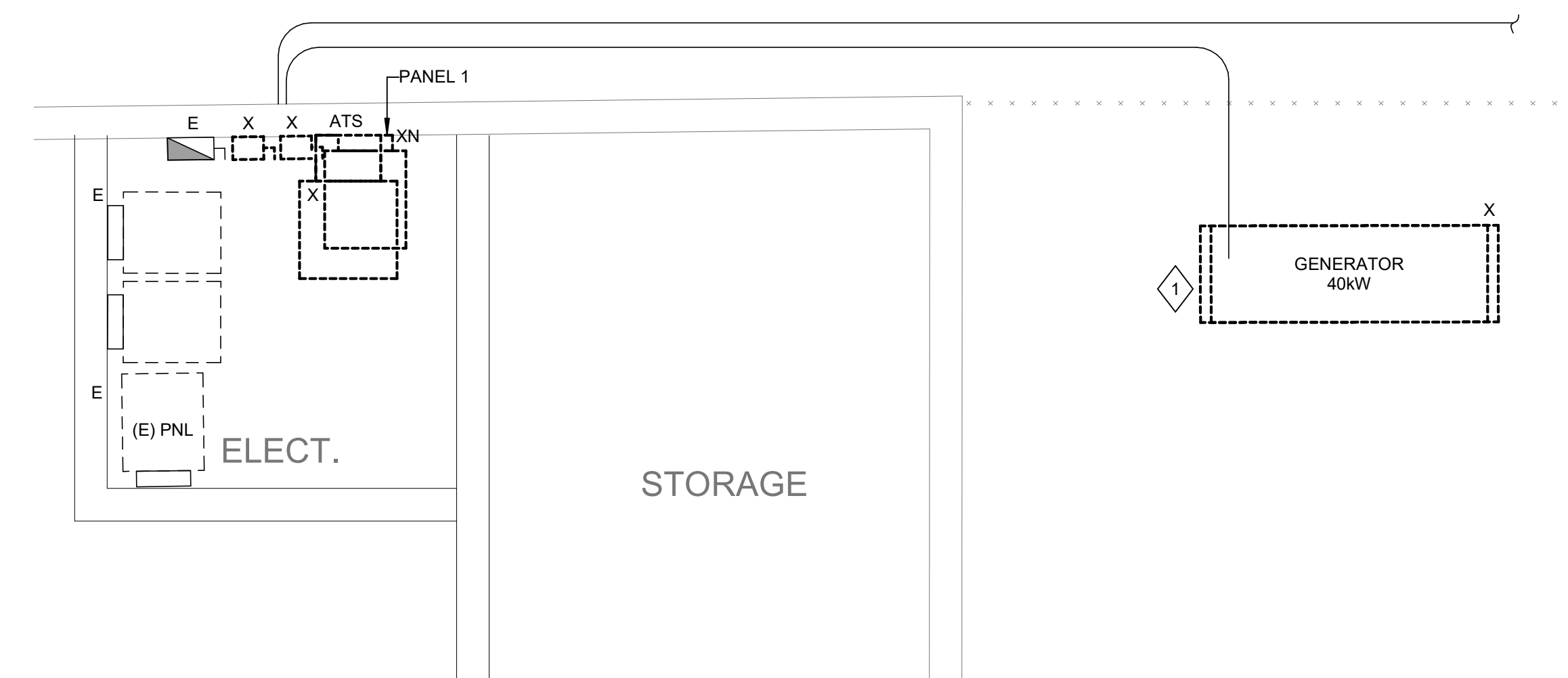
"BLANK" - NORMAL POWER

"E" - PROVIDED WITH EMERGENCY BATTERY

DEMOLITION / RELOCATION LEGEND	
	E EXISTING ELECTRICAL EQUIPMENT, DEVICE AND/OR FIXTURE TO REMAIN
	X EXISTING ELECTRICAL EQUIPMENT, DEVICE AND/OR FIXTURE TO BE SELECTIVELY DEMOLISHED
	XT EXISTING ELECTRICAL EQUIPMENT DEVICE AND/OR FIXTURE TO BE REMOVED AND TURNED OVER TO OWNER FOR RE-USE
	XR EXISTING ELECTRICAL EQUIPMENT, DEVICE AND/OR FIXTURE TO BE REMOVED, STORED AND RE-LOCATED.
	XL EXISTING ELECTRICAL EQUIPMENT, DEVICE AND/OR FIXTURE INDICATED IN NEW LOCATION
	XN EXISTING ELECTRICAL EQUIPMENT, DEVICE SHALL BE REMOVED AND REPLACED WITH NEW; MAINTAIN EXISTING BOX, RACEWAY AND WIRING.
DEMOLITION / RELOCATION NOTES	
PHASE LABELS SHOWN ABOVE ARE APPLIED IN SELECT AREAS AND MAY NOT ALWAYS BE PRESENT. REFER TO UNETYPE AND LINEWEIGHT TO DETERMINE EXISTING CONDITIONS AND DEMOLISHED EQUIPMENT.	

THIS IS A STANDARD SYMBOL LIST. ALL DEVICE SYMBOLS AND ABBREVIATIONS MAY NOT NECESSARILY APPEAR ON THE DESIGN PLANS OR DETAIL SHEETS. ONLY THOSE SYMBOLS INDICATED ON THE DESIGN PLANS ARE USED AND OTHERS SHOULD BE DISREGARDED.

COMMONWEALTH OF MASSACHUSETTS
MICHAEL Y. PANG
ELECTRICAL
NO. 48461
Michael Y. Pang
PROFESSIONAL ENGINEER
03/28/2025



KEYNOTES	
1	DISCONNECT BATTERY CHARGER AND MAINTAIN EXISTING CIRCUIT FOR REUSE



Key Plan:

Owner: CITY OF WORCESTER

Project Name:

Worcester-MA 18-20 E
Worcester St - Gen

Worcester, MA

[illegible]

Scale Bar:

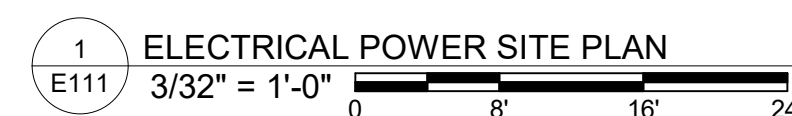
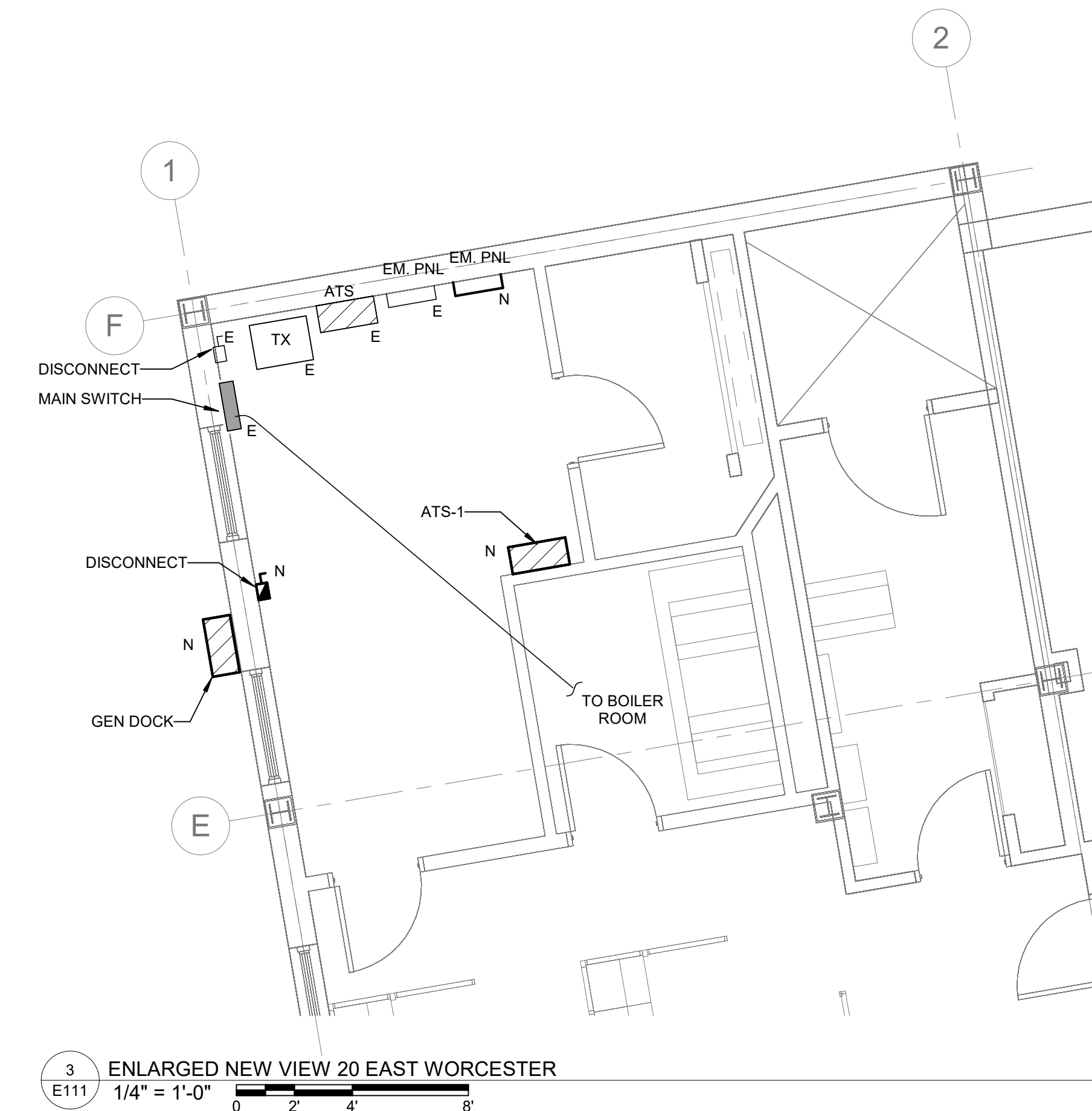
Drawing Title:

ELECTRICAL SITE POWER DEMOLITION PLAN


Date	03/28/2025
Scale	AS NOTED
Drawn By	HK
Checked By	MP
Project Number	210538.13

Drawing No. _____

E110



100%CD



FITZMEYER & TOCCI
ASSOCIATES, INC.
300 Unicorn Park Drive, 5th Floor
Woburn, Ma 01801
(P) 781.481.0210 (F) 781.481.0203

Key Plan:

Owner: CITY OF WORCESTER

Project Name:

Worcester-MA 18-20 E
Worcester St - Gen

Worcester, MA

[illegible]

Scale Bar:

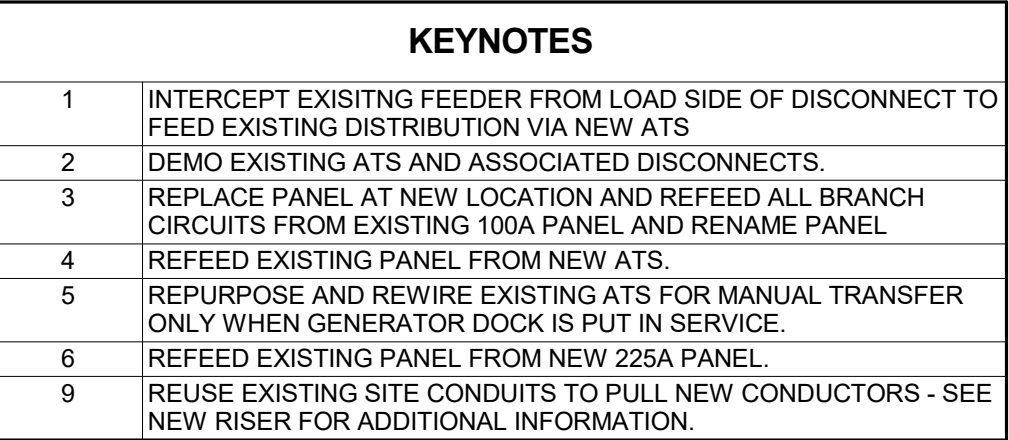
Drawing Title:

ELECTRICAL SITE POWER PLAN

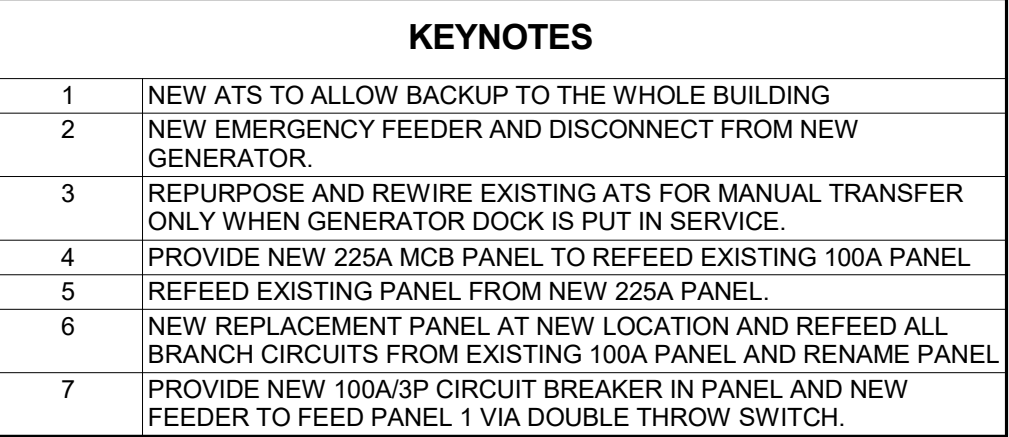
Date	03/28/2025
Scale	AS NOTED
Drawn By	HK
Checked By	MP
Project Number	210538.13

Drawing No.

E111



1	EXISTING ELECTRICAL ONE-LINE DIAGRAM
E700	NTS



2 NEW ELECTRICAL ONE-LINE DIAGRAM
E700 NTS

Key Plan:

Owner: CITY OF WORCESTER

Project Name

Worcester-MA 18-20 E
Worcester St - Gen

Worcester, MA

North Arrow

Stamp:

[illegible]

Scale Bar:

Drawing Title:

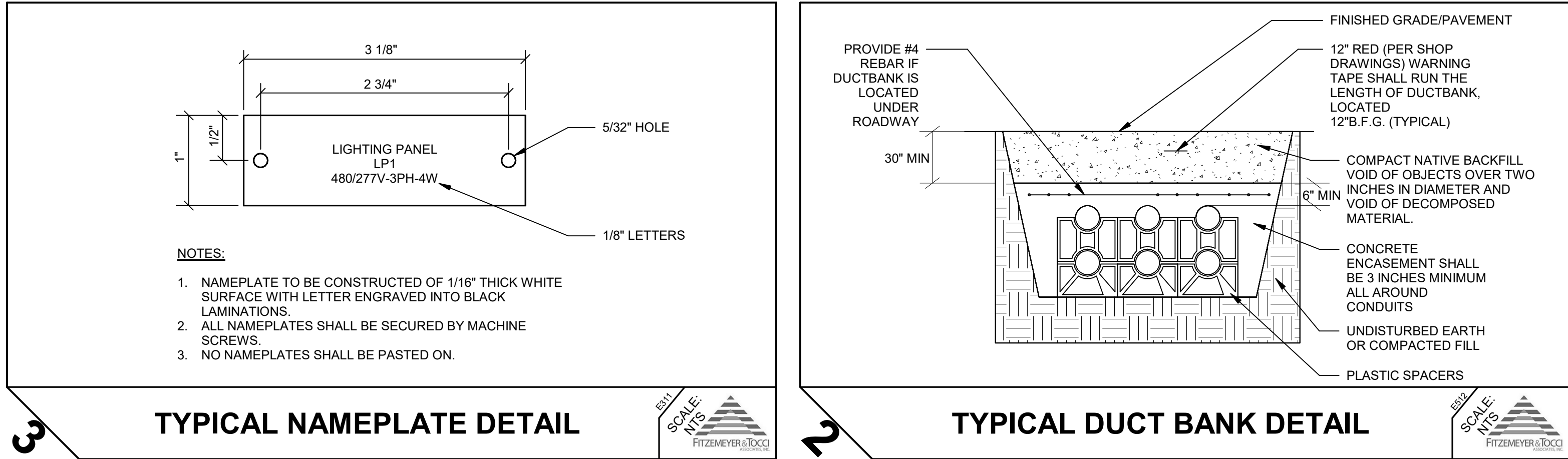
EXISTING ELECTRICAL RISER DIAGRAM

Date	03/28/2025
Scale	NTS
Drawn By	HK
Checked By	MP
Project Number	210538.13

Drawing No.

E700

BRANCH CIRCUIT WIRING LEGEND			
NOTES:			
1. ALL CONDUCTOR SIZES ARE FOR COPPER CONDUCTORS NEC (2020): 75 DEGREE C.			
2. CONDUIT SIZES ARE FOR COPPER CONDUCTORS WITH THHN/THWN INSULATION IN RMC.			
3. CONDUIT AND CABLE SIZES SHALL BE PER TABLE BELOW UNLESS NOTED OTHERWISE ON THE FLOOR PLANS AND DRAWINGS.			
4. SEE SPECIFICATIONS FOR ACCEPTABLE CONDUCTOR TYPES.			
CIRCUIT SYMBOL	CONDUCTORS		CIRCUIT BREAKER
	120 & 277V 1PH, 2W CKTS		
(201)	2#12 & 1#12G - 3/4"C		20/1
(301)	2#10 & 1#10G - 3/4"C		30/1
(401)	2#8 & 1#10G - 3/4"C		40/1
(501)	2#8 & 1#10G - 3/4"C		50/1
(601)	2#6 & 1#10G - 3/4"C		60/1
	208 & 480V 1PH, 2W CKTS		
(202)	2#12 & 1#12G - 3/4"C		20/2
(302)	2#10 & 1#10G - 3/4"C		30/2
(402)	2#8 & 1#10G - 3/4"C		40/2
(502)	2#8 & 1#10G - 3/4"C		50/2
(602)	2#6 & 1#10G - 3/4"C		60/2
	208 & 480V 3PH, 3W CKTS		
(203)	3#12 & 1#12G - 3/4"C		20/3
(303)	3#10 & 1#10G - 3/4"C		30/3
(403)	3#8 & 1#10G - 3/4"C		40/3
(503)	3#8 & 1#10G - 3/4"C		50/3
(603)	3#6 & 1#10G - 3/4"C		60/3



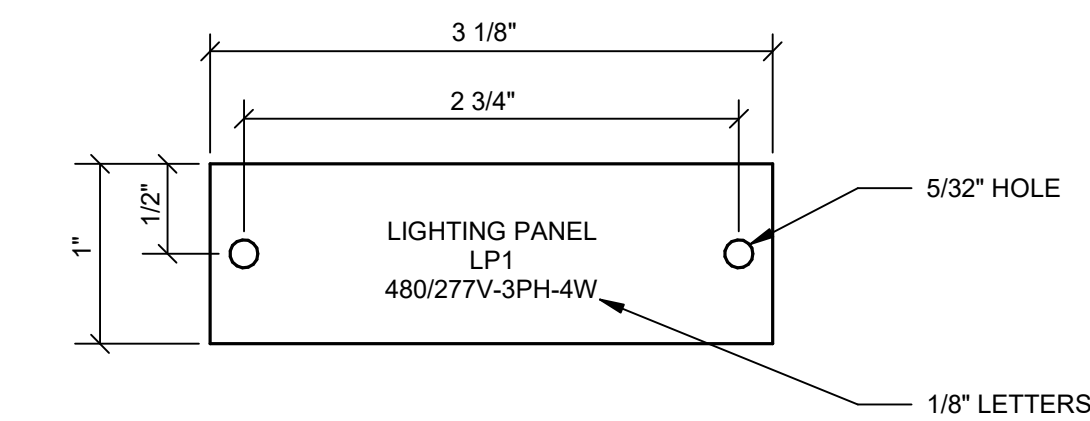
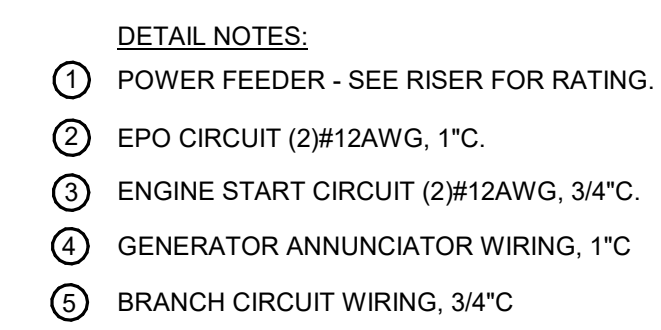
TYPICAL PANELBOARD NOTES

FURNISH ALL PANELBOARDS FULLY POPULATED WITH BRANCH CIRCUIT BREAKERS, THAT IS, ALL SPACES SHALL HAVE A 20AMP, 1 POLE CIRCUIT BREAKER INSTALLED.

PANEL FACE PLATES SHALL BE ATTACHED TO BACK BOX WITH FULL-LENGTH PIANO HINGE AND PROVIDED WITH LOCKING DOOR IN DOOR.

PANELBOARDS CONTAINING MAIN SERVICE DISCONNECT MUST BE LISTED FOR THE USE.

ALL CIRCUIT BREAKERS SHALL BE BOLT-ON TYPE AND HACR RATED.



NOTES:

1. NAMEPLATE TO BE CONSTRUCTED OF 1/16" THICK WHITE SURFACE WITH LETTER ENGRAVED INTO BLACK LAMINATIONS.
2. ALL NAMEPLATES SHALL BE SECURED BY MACHINE SCREWS.
3. NO NAMEPLATES SHALL BE PASTED ON.



Key Plan:

Owner:

City of Worcester

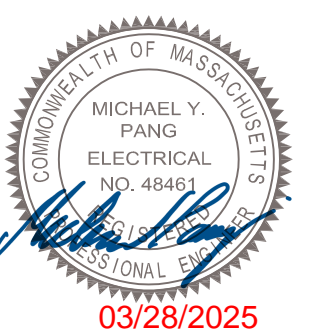
Project Name:

Worcester-MA - Gen Repl

Worcester, MA.

North Arrow

Stamp:



Scale Bar:

Drawing Title:

ELECTRICAL DETAILS

Date 03/28/2025

Scale	NTS
-------	-----

Drawn By	HK
----------	----

Checked By	MP
------------	----

Project Number	210538.12
----------------	-----------

Drawing No.

E900

100%CD



FITZMEYER & TOCCI
ASSOCIATES, INC.
300 Unicorn Park Drive, 5th Floor
Woburn, Ma 01801
(P) 781.481.0210 (F) 781.481.0203

Key Plan:

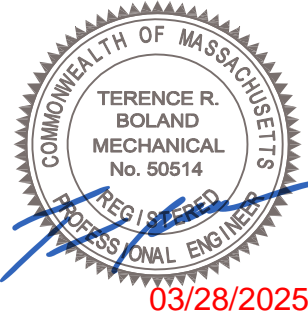
Owner:
City of Worcester

Project Name:
Worcester-MA - Gen Repl

Worcester, MA.

North Arrow

Stamp:



Rev.	Description	Date

Scale Bar:

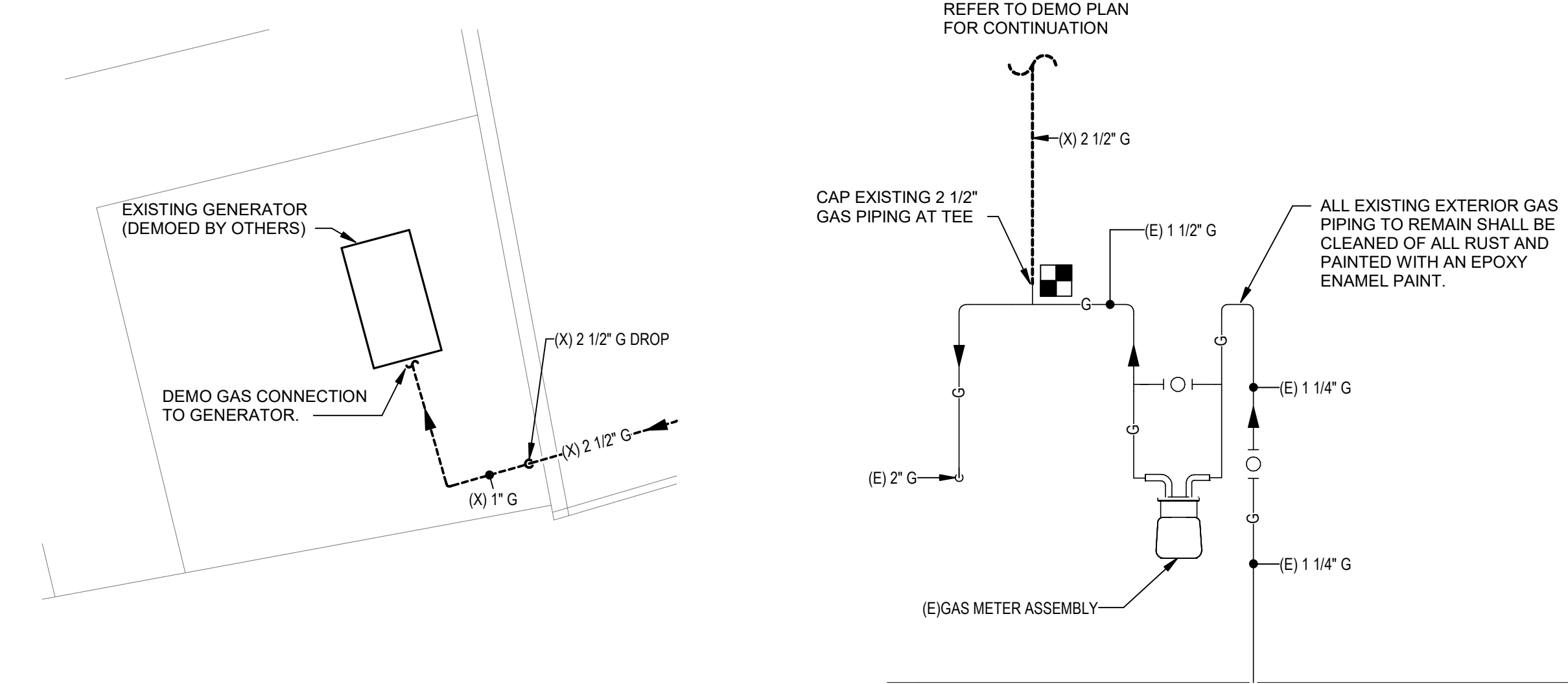
Drawing Title:

**PLUMBING GAS
DEMOLITION PLAN**

Date	03/28/2025
Scale	NTS
Drawn By	LSM
Checked By	RDB
Project Number	210538.12

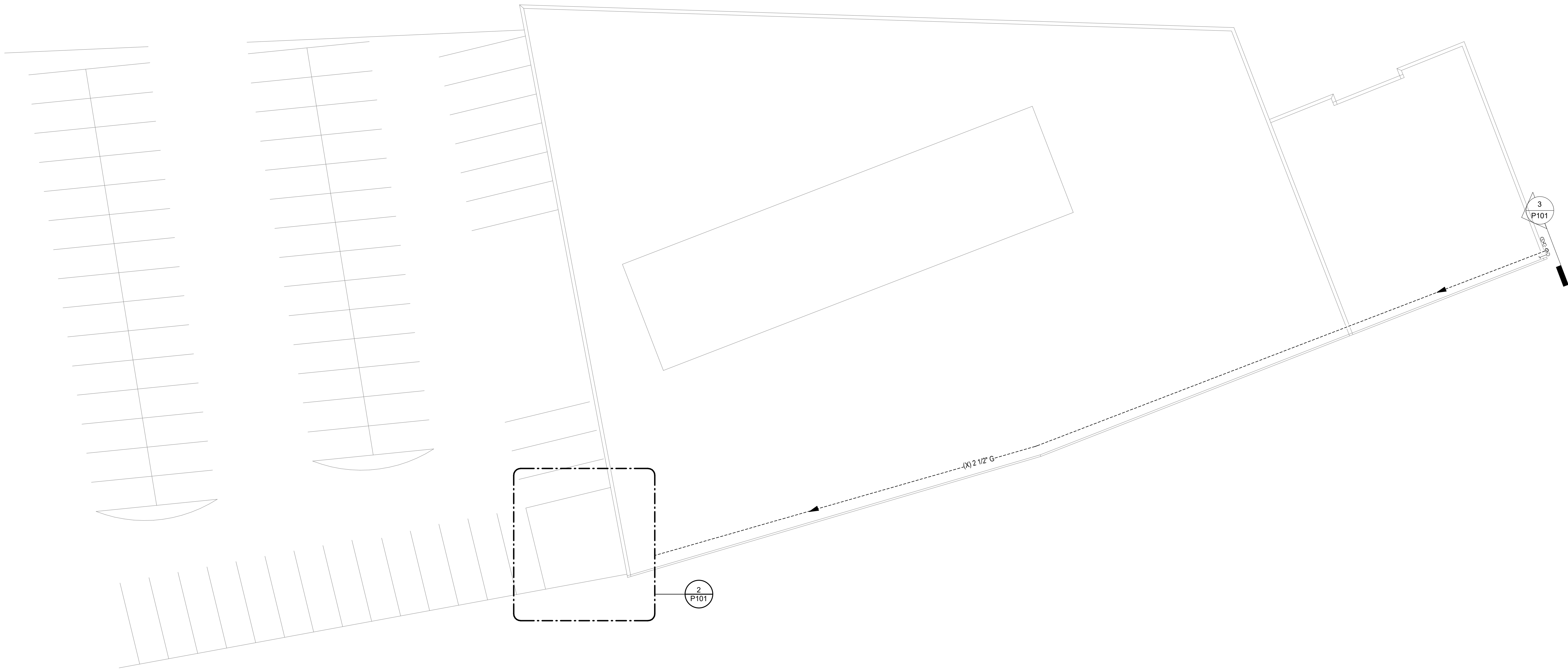
Drawing No.

P101



2 P101
1/8" = 1'-0"
0 4 8 16'

3 P101
GAS SERVICE ENTRANCE
NTS



1 P101
Plumbing Demo Plan-01
1/16" = 1'-0"
0 4 8 16'