

APPENDIX E | ADA SELF-EVALUATION

This page is intentionally left blank

CITY OF WORCESTER ADA GRIEVANCE PROCEDURE

The following grievance procedure is established to meet the requirements of the Americans with Disabilities Act. It may be used by anyone who wishes to file a complaint alleging discrimination on the basis of disability in employment practices and policies or the provision of services, activities, programs and benefits by the city of Worcester, its officers, employees, boards and commissions.

The complaint should be in writing and contain information about the alleged discrimination such as name, address, phone number of complainant and location, date and description of the problem. Reasonable accommodations, such as personal interviews or a tape recording of the complaint, will be made available for persons with disabilities who are unable to submit a written complaint.

The complaint should be submitted by the grievant and/or his/her designee as soon as possible but no later than 60 calendar days after the alleged violation to:

Ms. Jayna Turchek, Esq.
ADA Coordinator
City of Worcester
City Hall - 455 Main Street, Room 101
Worcester, Massachusetts 01608
(508) 799-8486

Within 15 Calendar days after the receipt of the complaint Ms. Turchek will meet with the complainant to discuss the complaint and possible resolutions. Within 15 calendar days after the meeting Ms. Turchek will respond in writing, and where appropriate in a format accessible to the complainant such as audiotape. The response will explain the position of the city of Worcester and offer options for substantive resolution of the complaint. If the response by Ms. Turchek does not satisfactorily resolve the issue, the complainant and/or his/her designee may appeal the decision of the ADA Coordinator within 15 calendar days after receipt of the response to the City Manager, who may designate an official under his or her jurisdiction to respond to the appeal.

Within 15 calendar days after receipt of the appeal, the City Manager or his or her designee will meet with the complainant to discuss the complaint and possible resolutions. The complainant may be represented by legal counsel or other appropriate advocates and may bring other individuals to provide information to the City Manager, or his or her designee, which is relevant to the issues raised by the appeal. The City Manager, or his or her designee, may at any time seek additional information which is relevant to the issues raised by the appeal from the ADA Coordinator, any other city official or any other source. Within 21 calendar days after the meeting with the City Manager or his or her designee will respond in writing, and where appropriate in a format accessible to the complainant such as audiotape, with a final resolution of

the complaint. In the event that the City Manager determines that 21 days is not sufficient to resolve the appeal he shall so notify the complainant that additional time, not exceeding 30 days, is required to resolve the appeal.

All complaints received by the ADA Coordinator, appeals to the City Manager or his or her designee and responses from the ADA Coordinator and City Manager or his or her designee will be kept by the city of Worcester for three years or such other time as may be stated in any applicable records retention schedule adopted by the city of Worcester or the Secretary of the Commonwealth, whichever is longer.

CITY OF WORCESTER AMERICANS WITH DISABILITIES ACT PUBLIC NOTICE

The City of Worcester does not discriminate on the basis of disability in admission to, access to, or operation of its programs, services or activities. The City does not discriminate on the basis of disability in its hiring or employment practices.

Equal Access to Public Meetings:

All City sponsored public meetings and hearings must be held in locations that are accessible to people with disabilities, including people who use wheelchairs.

Effective Communication:

Persons with disabilities who need either:

- (1) Auxiliary aids and services for effective communication, or
- (2) Written materials in alternative formats, or
- (3) Reasonable modifications in policies and procedures,

in order to access programs and activities of the City of Worcester, are invited to make their needs known to program staff or to the ADA Coordinator.

Questions, complaints, or requests for additional information may be sent to:

Jayna Turchek, ADA Coordinator
Director of the Office of Human Rights & Disabilities
City Hall Room 101-- 455 Main Street, Worcester, MA 01608
disabilities@worcesterma.gov
(508) 799-8486

Keep this notice posted in a prominent public place.

This notice is provided as required by Title II of the Americans with Disabilities Act (ADA) and by Section 504 of the Rehabilitation Act of 1973.

This notice is available in alternative formats from the ADA Coordinator.

City of Worcester
Americans with Disabilities Act Public Notice

NOTA PUBLICA PARA ESTADOUNIDENSES CON DISCAPACIDADES

La Ciudad de Worcester no discrimina en base a discapacidad en la admisión, acceso a, u operación de sus programas, servicios o actividades. La Ciudad no discrimina en base a discapacidad en sus contrataciones o prácticas de empleo.

Igual Acceso a Reuniones Públicas:

Todos las reuniones públicas y audiencias deben ser celebradas en lugares accesibles a los discapacitados, incluyendo a usuarios de sillas de ruedas.

Comunicación Efectiva:

Personas con discapacidades que necesiten:

- (1) Equipo auxiliar y servicios para comunicarse efectivamente, o
- (2) Material escrito en diferente formato, o
- (3) Modificación razonable en políticas y procedimientos,

para acceder a programas y actividades de la Ciudad de Worcester, están invitados a hacer conocer sus necesidades al personal del programa o al coordinador de ADA.

Preguntas, quejas, o pedidos de información adicional pueden ser enviadas a:

Jayna Turchek, Coordinadora del Ley sobre Estadounidenses con Discapacidades (ADA),
 Directora de la Oficina de Derechos Humanos y Discapacidades
 City Hall Cuarto 101 -- 455 Main Street, Worcester, MA 01608
disabilities@worcesterma.gov
 (508) 799-8486

Mantenga este aviso publicado en un lugar prominente.

Este aviso es proporcionado como requiere el Title II of the Americans with Disabilities Act (ADA) y la Section 504 de la Rehabilitation Act of 1973.

Este aviso está disponible, con el Coordinador de ADA ,en formatos alternativos.

Ciudad de Worcester
 Americans with Disabilities Act Public Notice



DISTRICT: 1

LOCATION: **GREEN HILL PARK**

SKYLINE DRIVE

BUILDING: **ADMINISTRATION BUILDING**

	Yes	No	Comments
Entrances			
Primary public entrances accessible to person using wheelchair, must be signed, gotten to independently, and not be the service entrance.			NO BRAILLE SIGNS
Level space extending 5ft from the door, interior and exterior entrance doors			
Minimum 32" clear width opening (i.e. 36" door with standard hinge)			
At least 18" clear floor area on latch, pull side of door			
Door handle no higher than 48" and operable with a closed fist			
Vestibule is 4ft plus the width of the door swinging into the space			
Entrance(s) on a level that makes elevators accessible			N/A
Door mats less than 1/2" thick are securely fastened			N/A
Door mats more than 1/2" thick are recessed			N/A
Grates in path of travel have openings of 1/2" maximum			N/A
Signs at non-accessible entrance(S) indicate direction to accessible entrance			N/A
Emergency egress - alarms with flashing lights and audible signals, sufficiently lighted			No visual fire alarm system

Stairs and Doors			
No open risers			N/A
Treads no less than 11" wide			N/A
Handrails on both sides			N/A
Handrails 34"-38" above tread			N/A
Handrail extends a minimum of 1ft beyond top and bottom riser (if no safety hazard permits)			N/A
Handgrip oval or round			N/A
Handgrip has a smooth surface			N/A
Handgrip diameter between 1 1/4" and 1 1/2"			N/A
1 1/2" clearance between wall and handrail			N/A
Doors			
Minimum 32" clear opening			
At least 18" clear floor space on pull side of door			
Closing speed minimum 3 seconds to within 3" of the latch			
Maximum pressure 5 pounds interior doors			

OPEN SPACE RECREATION PLAN
BUILDING INVENTORIES

DISTRICT: 1
LOCATION: **GREEN HILL PARK**
SKYLINE DRIVE
BUILDING: **ADMINISTRATION BUILDING**



	Yes	No	Comments
Threshold maximum 1/2" high, beveled on both sides			
Hardware operable with a closed fist (no conventional door knobs or thumb latch devices)			
Hardware minimum 36", maximum 48" above the floor			
Clear, level floor space extends out 5ft from both sides of the door			Doors onflict with when more than one is open at a time. Existing furnishings within clear space
Door adjacent to revolving door is accessible and unlocked			N/A
Doors opening into hazardous area have hardware that is knurled or roughened			N/A

Restrooms			
5ft turn space measured 12" from the floor			
At least one sink:			
Clear floor space 30" by 48" to allow a forward approach			
Mounted without pedestal or legs, height 34" to top of rim			
Extends at least 22" from the wall			
Open knee space a minimum 19" deep, 30" width, and 27" high			
Cover exposed pipes with insulation			
Faucets operable with closed fist (level or spring activated handle)			
At least one stall:			
Accessible to person using wheelchair at 60" wide or 72" inches deep			
Stall door is 36" wide			
Stall door swings out			
Stall door is self closing			
Stall door has a pull latch			
Lock on stall door is operable with a closed fist, and 32" above the floor			
Coat hook is 54" high			
Toilet:			
18" from center to nearest side wall			
42" minimum clear space from center to farthest wall or fixture			
Top of seat 17"-19" above the floor			
Grab Bars			
On back and side wall closest to toilet			

OPEN SPACE RECREATION PLAN
BUILDING INVENTORIES

DISTRICT: 1
LOCATION: **GREEN HILL PARK**
SKYLINE DRIVE
BUILDING: **ADMINISTRATION BUILDING**



	Yes	No	Comments
1 1/4" diameter			
1 1/2" clearance to wall			
Located 30" above and parallel to the floor			
Acid-etched or roughened surface			
42" long			
Fixtures			
Toilet paper dispenser is 24" above floor			
One mirror set a maximum 38" to bottom (if tilted 42")			
Dispenser (towel, soap, etc) at least one of each a maximum 42" above the floor			

Floors, drinking fountains, telephones			
Non-slip surface			
carpeting is high-density, low pile, non-absorbent stretched taut, securely anchored			
Corridor width minimum is 3ft			
Objects (signs, ceilings, fixtures) can only protrude 4" into the path of travel from a height of 27" to 80" above the floor			
Drinking fountains			
Spouts no higher than 36" from floor to outlet			
Hand Operated push button or level controls			N/A
Spouts located near from with stream of water as parallel to front as possible			N/A
If recessed, recess a minimum 30" width, and no deeper than depth of fountain			N/A
If no clear knee space underneath, clear floor space 30" x 40" to allow parallel approach			N/A
Telephones			
Highest operating part a maximum 54" above the floor			N/A
Access within 12" of phone, 30" high by 30" width			N/A
Adjustable volume control on headset so identified			N/A
Signs, Signals, and Switches			
Switches, Controls, and Signs			
Switched and controls for light, heat, ventilation, windows, fire alarms, thermostats, etc, must be a minimum of 36" and a maximum of 48" above the floor for a forward reach, a maximum of 54" for a side reach			
Electrical outlets centered no lower than 18" above the floor			

OPEN SPACE RECREATION PLAN
BUILDING INVENTORIES

DISTRICT: 1
LOCATION: **GREEN HILL PARK**
SKYLINE DRIVE
BUILDING: **ADMINISTRATION BUILDING**



	Yes	No	Comments
Warnings signals must be visual as well as audible			
Signs, Signals, and Switches			
Mounting height must be 60" to centerline of the sign			
Within 18" of door jamb or recessed			
Letters and numbers at least 1 1/4" high			
Letters and numbers raised .03"			
Letters and numbers contrast with the background color			

NOTES

ONE ADA BATHROOM FOR ENTIRE COMPLIANT FLOOR
NO ADA COMPLIANT URINAL - THERE MUST BE 2 MEETING ROOM B;
IF BACK OF ROOM IS PUBLIC/ USED BY STAFF OTHER THAN THE CITY'S IT MUST BE MADE ACCESSIBLE
MOST NON-MEETING ROOM ROOMS HAVE FURNITURE OBSTRUCTING TURN RADIUS / CLEAR WIDTH
IF OUTSIDE CATERING IS USED IN ROOM C THE KITCHEN MUST BE ACCESSIBLE
COUNTER NON-COMPLIANT AT 36" HEIGHT

OPEN SPACE RECREATION PLAN
BUILDING INVENTORIES

DISTRICT: 1
LOCATION: **GREEN HILL PARK**
SKYLINE DRIVE
BUILDING: **GOLF CLUB HOUSE**



	Yes	No	Comments
Entrances			
Primary public entrances accessible to person using wheelchair, must be signed, gotten to independently, and not be the service entrance.			
Level space extending 5ft from the door, interior and exterior entrance doors			
Minimum 32" clear width opening (i.e. 36" door with standard hinge)			
At least 18" clear floor area on latch, pull side of door			
Door handle no higher than 48" and operable with a closed fist			
Vestibule is 4ft plus the width of the door swinging into the space			
Entrance(s) on a level that makes elevators accessible			N/A
Door mats less than 1/2" thick are securely fastened			N/A
Door mats more than 1/2" thick are recessed			N/A
Grates in path of travel have openings of 1/2" maximum			N/A
Signs at non-accessible entrance(S) indicate direction to accessible entrance			N/A
Emergency egress - alarms with flashing lights and audible signals, sufficiently lighted			
			No ADA seat at bar
			No ADA counter at service station
Stairs and Doors			
No open risers			N/A
Treads no less than 11" wide			N/A
Handrails on both sides			N/A
Handrails 34"-38" above tread			N/A
Handrail extends a minimum of 1ft beyond top and bottom riser (if no safety hazard permits)			N/A
Handgrip oval or round			N/A
Handgrip has a smooth surface			N/A
Handgrip diameter between 1 1/4" and 1 1/2"			N/A
1 1/2" clearance between wall and handrail			N/A
Doors			
Minimum 32" clear opening			
At least 18" clear floor space on pull side of door			
Closing speed minimum 3 seconds to within 3" of the latch			
Maximum pressure 5 pounds interior doors			
Threshold maximum 1/2" high, beveled on both sides			
Hardware operable with a closed fist (no conventional door knobs or thumb latch devices)			
Hardware minimum 36", maximum 48" above the floor			

OPEN SPACE RECREATION PLAN
BUILDING INVENTORIES

DISTRICT: 1
LOCATION: **GREEN HILL PARK**
SKYLINE DRIVE
BUILDING: **GOLF CLUB HOUSE**



	Yes	No	Comments
Clear, level floor space extends out 5ft from both sides of the door			
Door adjacent to revolving door is accessible and unlocked			
Doors opening into hazardous area have hardware that is knurled or roughened			

Restrooms			
5ft turn space measured 12" from the floor			
At least one sink:			
Clear floor space 30" by 48" to allow a forward approach			
Mounted without pedestal or legs, height 34" to top of rim			
Extends at least 22" from the wall			
Open knee space a minimum 19" deep, 30" width, and 27" high			
Cover exposed pipes with insulation			
Faucets operable with closed fist (level or spring activated handle)			
At least one stall:			
Accessible to person using wheelchair at 60" wide or 72" inches deep			
Stall door is 36" wide			
Stall door swings out			
Stall door is self closing			
Stall door has a pull latch			
Lock on stall door is operable with a closed fist, and 32" above the floor			
Coat hook is 54" high			
Toilet:			
18" from center to nearest side wall			
42" minimum clear space from center to farthest wall or fixture			
Top of seat 17"-19" above the floor			
Grab Bars			
On back and side wall closest to toilet			
1 1/4" diameter			
1 1/2" clearance to wall			
Located 30" above and parallel to the floor			
Acid-etched or roughened surface			
42" long			
Fixtures			
Toilet paper dispenser is 24" above floor			
One mirror set a maximum 38" to bottom (if tilted 42")			
Dispenser (towel, soap, etc) at least one of each a maximum 42" above the floor			

Floors, drinking fountains, telephones

OPEN SPACE RECREATION PLAN
BUILDING INVENTORIES

DISTRICT: 1
LOCATION: **GREEN HILL PARK**
SKYLINE DRIVE
BUILDING: **GOLF CLUB HOUSE**



	Yes	No	Comments
Non-slip surface			
carpeting is high-density, low pile, non-absorbent stretched taut, securely anchored			
Corridor width minimum is 3ft			
Objects (signs, ceilings, fixtures) can only protrude 4" into the path of travel from a height of 27" to 80" above the floor			
Drinking fountains			
Spouts no higher than 36" from floor to outlet			N/A
Hand Operated push button or level controls			N/A
Spouts located near from with stream of water as parallel to front as possible			N/A
If recessed, recess a minimum 30" width, and no deeper than depth of fountain			N/A
If no clear knee space underneath, clear floor space 30" x 40" to allow parallel approach			N/A
Telephones			
Highest operating part a maximum 54" above the floor			N/A
Access within 12" of phone, 30" high by 30" width			N/A
Adjustable volume control on headset so identified			N/A
Switches, Controls, and Signs			
Switched and controls for light, heat, ventilation, windows, fire alarms, thermostats, etc, must be a minimum of 36" and a maximum of 48" above the floor for a forward reach, a maximum of 54" for a side reach			
Electrical outlets centered no lower than 18" above the floor			
Warnings signals must be visual as well as audible			
Signs, Signals, and Switches			
Mounting height must be 60" to centerline of the sign			
Within 18" of door jamb or recessed			
Letters and numbers at least 1 1/4" high			
Letters and numbers raised .03"			
Letters and numbers contrast with the background color			

NOTES:

No ADA seat at bar

OPEN SPACE RECREATION PLAN
BUILDING INVENTORIES

DISTRICT: 1
LOCATION: **GREEN HILL PARK**
SKYLINE DRIVE
BUILDING: **LITTLE LEAGUE BUILDING**



	Yes	No	Comments
Entrances			
Primary public entrances accessible to person using wheelchair, must be signed, gotten to independently, and not be the service entrance.			
Level space extending 5ft from the door, interior and exterior entrance doors			
Minimum 32" clear width opening (i.e. 36" door with standard hinge)			
At least 18" clear floor area on latch, pull side of door			
Door handle no higher than 48" and operable with a closed fist			
Vestibule is 4ft plus the width of the door swinging into the space			
Entrance(s) on a level that makes elevators accessible			N/A
Door mats less than 1/2" thick are securely fastened			N/A
Door mats more than 1/2" thick are recessed			N/A
Grates in path of travel have openings of 1/2" maximum			N/A
Signs at non-accessible entrance(S) indicate direction to accessible entrance			N/A
Emergency egress - alarms with flashing lights and audible signals, sufficiently lighted			

Stairs and Doors			
No open risers			N/A
Treads no less than 11" wide			N/A
Handrails on both sides			N/A
Handrails 34"-38" above tread			N/A
Handrail extends a minimum of 1ft beyond top and bottom riser (if no safety hazard permits)			N/A
Handgrip oval or round			N/A
Handgrip has a smooth surface			N/A
Handgrip diameter between 1 1/4" and 1 1/2"			N/A
1 1/2" clearance between wall and handrail			N/A
Doors			
Minimum 32" clear opening			
At least 18" clear floor space on pull side of door			
Closing speed minimum 3 seconds to within 3" of the latch			
Maximum pressure 5 pounds interior doors			
Threshold maximum 1/2" high, beveled on both sides			
Hardware operable with a closed first (no conventional door knobs or thumb latch devices)			
Hardware minimum 36", maximum 48" above the floor			

OPEN SPACE RECREATION PLAN
BUILDING INVENTORIES

DISTRICT: 1
LOCATION: **GREEN HILL PARK**
SKYLINE DRIVE
BUILDING: **LITTLE LEAGUE BUILDING**



	Yes	No	Comments
Clear, level floor space extends out 5ft from both sides of the door			
Door adjacent to revolving door is accessible and unlocked			N/A
Doors opening into hazardous area have hardware that is knurled or roughened			N/A

Restrooms			
5ft turn space measured 12" from the floor			
At least one sink:			
Clear floor space 30" by 48" to allow a forward approach			
Mounted without pedestal or legs, height 34" to top of rim			
Extends at least 22" from the wall			
Open knee space a minimum 19" deep, 30" width, and 27" high			
Cover exposed pipes with insulation			
Faucets operable with closed fist (level or spring activated handle)			
At least one stall:			
Accessible to person using wheelchair at 60" wide or 72" inches deep			
Stall door is 36" wide			
Stall door swings out			
Stall door is self closing			
Stall door has a pull latch			
Lock on stall door is operable with a closed fist, and 32" above the floor			
Coat hook is 54" high			
Toilet:			
18" from center to nearest side wall			
42" minimum clear space from center to farthest wall or fixture			
Top of seat 17"-19" above the floor			
Grab Bars			
On back and side wall closest to toilet			
1 1/4" diameter			
1 1/2" clearance to wall			
Located 30" above and parallel to the floor			
Acid-etched or roughened surface			
42" long			
Fixtures			
Toilet paper dispenser is 24" above floor			
One mirror set a maximum 38" to bottom (if tilted 42")			
Dispenser (towel, soap, etc) at least one of each a maximum 42" above the floor			

Floors, drinking fountains, telephones

OPEN SPACE RECREATION PLAN
BUILDING INVENTORIES

DISTRICT: 1
LOCATION: **GREEN HILL PARK**
SKYLINE DRIVE
BUILDING: **LITTLE LEAGUE BUILDING**



	Yes	No	Comments
Non-slip surface			
carpeting is high-density, low pile, non-absorbent stretched taut, securely anchored			N/A
Corridor width minimum is 3ft			
Objects (signs, ceilings, fixtures) can only protrude 4" into the path of travel from a height of 27" to 80" above the floor			
Drinking fountains			
Spouts no higher than 36" from floor to outlet			N/A
Hand Operated push button or level controls			N/A
Spouts located near from with stream of water as parallel to front as possible			N/A
If recessed, recess a minimum 30" width, and no deeper than depth of fountain			N/A
If no clear knee space underneath, clear floor space 30" x 40" to allow parallel approach			N/A
Telephones			
Highest operating part a maximum 54" above the floor			N/A
Access within 12" of phone, 30" high by 30" width			N/A
Adjustable volume control on headset so identified			N/A
Switches, Controls, and Signs			
Switched and controls for light, heat, ventilation, windows, fire alarms, thermostats, etc, must be a minimum of 36" and a maximum of 48" above the floor for a forward reach, a maximum of 54" for a side reach			
Electrical outlets centered no lower than 18" above the floor			
Warnings signals must be visual as well as audible			
Signs, Signals, and Switches			
Mounting height must be 60" to centerline of the sign			
Within 18" of door jamb or recessed			
Letters and numbers at least 1 1/4" high			
Letters and numbers raised .03"			
Letters and numbers contrast with the background color			

OPEN SPACE RECREATION PLAN
BUILDING INVENTORIES

DISTRICT: 1
LOCATION: **GREEN HILL PARK**
SKYLINE DRIVE
BUILDING: **SPORTS COMPLEX**



	Yes	No	Comments
Entrances			
Primary public entrances accessible to person using wheelchair, must be signed, gotten to independently, and not be the service entrance.			
Level space extending 5ft from the door, interior and exterior entrance doors			
Minimum 32" clear width opening (i.e. 36" door with standard hinge)			
At least 18" clear floor area on latch, pull side of door			
Door handle no higher than 48" and operable with a closed fist			
Vestibule is 4ft plus the width of the door swinging into the space			
Entrance(s) on a level that makes elevators accessible			N/A
Door mats less than 1/2" thick are securely fastened			N/A
Door mats more than 1/2" thick are recessed			N/A
Grates in path of travel have openings of 1/2" maximum			N/A
Signs at non-accessible entrance(S) indicate direction to accessible entrance			N/A
Emergency egress - alarms with flashing lights and audible signals, sufficiently lighted			

Stairs and Doors			
No open risers			N/A
Treads no less than 11" wide			N/A
Handrails on both sides			N/A
Handrails 34"-38" above tread			N/A
Handrail extends a minimum of 1ft beyond top and bottom riser (if no safety hazard permits)			N/A
Handgrip oval or round			N/A
Handgrip has a smooth surface			N/A
Handgrip diameter between 1 1/4" and 1 1/2"			N/A
1 1/2" clearance between wall and handrail			N/A
Doors			
<i>Specification</i>			
Minimum 32" clear opening			
At least 18" clear floor space on pull side of door			
Closing speed minimum 3 seconds to within 3" of the latch			
Maximum pressure 5 pounds interior doors			
Threshold maximum 1/2" high, beveled on both sides			
Hardware operable with a closed fist (no conventional door knobs or thumb latch devices)			
Hardware minimum 36", maximum 48" above the floor			

OPEN SPACE RECREATION PLAN
BUILDING INVENTORIES

DISTRICT: 1
LOCATION: **GREEN HILL PARK**
SKYLINE DRIVE
BUILDING: **SPORTS COMPLEX**



	Yes	No	Comments
Clear, level floor space extends out 5ft from both sides of the door			
Door adjacent to revolving door is accessible and unlocked			N/A
Doors opening into hazardous area have hardware that is knurled or roughened			N/A

Restrooms			
5ft turn space measured 12" from the floor			
At least one sink:			
Clear floor space 30" by 48" to allow a forward approach			
Mounted without pedestal or legs, height 34" to top of rim			
Extends at least 22" from the wall			
Open knee space a minimum 19" deep, 30" width, and 27" high			
Cover exposed pipes with insulation			
Faucets operable with closed fist (level or spring activated handle)			
At least one stall:			
Accessible to person using wheelchair at 60" wide or 72" inches deep			
Stall door is 36" wide			
Stall door swings out			
Stall door is self closing			
Stall door has a pull latch			
Lock on stall door is operable with a closed fist, and 32" above the floor			
Coat hook is 54" high			
Toilet:			
18" from center to nearest side wall			
42" minimum clear space from center to farthest wall or fixture			
Top of seat 17"-19" above the floor			
Grab Bars			
On back and side wall closest to toilet			
1 1/4" diameter			
1 1/2" clearance to wall			
Located 30" above and parallel to the floor			
Acid-etched or roughened surface			
42" long			
Fixtures			
Toilet paper dispenser is 24" above floor			
One mirror set a maximum 38" to bottom (if tilted 42")			
Dispenser (towel, soap, etc) at least one of each a maximum 42" above the floor			

Floors, drinking fountains, telephones

OPEN SPACE RECREATION PLAN
BUILDING INVENTORIES

DISTRICT: 1
LOCATION: **GREEN HILL PARK**
SKYLINE DRIVE
BUILDING: **SPORTS COMPLEX**



	Yes	No	Comments
Non-slip surface			
carpeting is high-density, low pile, non-absorbent stretched taut, securely anchored			N/A
Corridor width minimum is 3ft			N/A
Objects (signs, ceilings, fixtures) can only protrude 4" into the path of travel from a height of 27" to 80" above the floor			
Drinking fountains			
Spouts no higher than 36" from floor to outlet			
Hand Operated push button or level controls			
Spouts located near from with stream of water as parallel to front as possible			
If recessed, recess a minimum 30" width, and no deeper than depth of fountain			N/A
If no clear knee space underneath, clear floor space 30" x 40" to allow parallel approach			N/A
Telephones			
Highest operating part a maximum 54" above the floor			N/A
Access within 12" of phone, 30" high by 30" width			N/A
Adjustable volume control on headset so identified			N/A
Switches, Controls, and Signs			
Switched and controls for light, heat, ventilation, windows, fire alarms, thermostats, etc, must be a minimum of 36" and a maximum of 48" above the floor for a forward reach, a maximum of 54" for a side reach			
Electrical outlets centered no lower than 18" above the floor			
Warnings signals must be visual as well as audible			
Signs, Signals, and Switches			
Mounting height must be 60" to centerline of the sign			
Within 18" of door jamb or recessed			
Letters and numbers at least 1 1/4" high			
Letters and numbers raised .03"			
Letters and numbers contrast with the background color			

OPEN SPACE RECREATION PLAN
BUILDING INVENTORIES

DISTRICT: 1
LOCATION: **GREEN HILL PARK**
SKYLINE DRIVE
BUILDING: **FARM BARN**
BUILDING A



	Yes	No	Comments
Entrances			
Primary public entrances accessible to person using wheelchair, must be signed, gotten to independently, and not be the service entrance.			
Level space extending 5ft from the door, interior and exterior entrance doors			
Minimum 32" clear width opening (i.e. 36" door with standard hinge)			
At least 18" clear floor area on latch, pull side of door			
Door handle no higher than 48" and operable with a closed fist			
Vestibule is 4ft plus the width of the door swinging into the space			
Entrance(s) on a level that makes elevators accessible			
Door mats less than 1/2" thick are securely fastened			
Door mats more than 1/2" thick are recessed			
Grates in path of travel have openings of 1/2" maximum			
Signs at non-accessible entrance(S) indicate direction to accessible entrance			
Emergency egress - alarms with flashing lights and audible signals, sufficiently lighted			

Stairs and Doors			
No open risers			N/A
Treads no less than 11" wide			N/A
Handrails on both sides			N/A
Handrails 34"-38" above tread			N/A
Handrail extends a minimum of 1ft beyond top and bottom riser (if no safety hazard permits)			N/A
Handgrip oval or round			N/A
Handgrip has a smooth surface			N/A
Handgrip diameter between 1 1/4" and 1 1/2"			N/A
1 1/2" clearance between wall and handrail			N/A
Doors			
Minimum 32" clear opening			
At least 18" clear floor space on pull side of door			
Closing speed minimum 3 seconds to within 3" of the latch			
Maximum pressure 5 pounds interior doors			N/A
Threshold maximum 1/2" high, beveled on both sides			
Hardware operable with a closed fist (no conventional door knobs or thumb latch devices)			
Hardware minimum 36", maximum 48" above the floor			

OPEN SPACE RECREATION PLAN
BUILDING INVENTORIES

DISTRICT: 1
LOCATION: **GREEN HILL PARK**
SKYLINE DRIVE
BUILDING: **FARM BARN**
BUILDING A



	Yes	No	Comments
Entrances			
Clear, level floor space extends out 5ft from both sides of the door			
Door adjacent to revolving door is accessible and unlocked			N/A
Doors opening into hazardous area have hardware that is knurled or roughened			N/A
Restrooms			
5ft turn space measured 12" from the floor			N/A
At least one sink:			N/A
Clear floor space 30" by 48" to allow a forward approach			N/A
Mounted without pedestal or legs, height 34" to top of rim			N/A
Extends at least 22" from the wall			N/A
Open knee space a minimum 19" deep, 30" width, and 27" high			N/A
Cover exposed pipes with insulation			N/A
Faucets operable with closed fist (level or spring activated handle)			N/A
At least one stall:			
Accessible to person using wheelchair at 60" wide or 72" inches deep			N/A
Stall door is 36" wide			N/A
Stall door swings out			N/A
Stall door is self closing			N/A
Stall door has a pull latch			N/A
Lock on stall door is operable with a closed fist, and 32" above the floor			N/A
Coat hook is 54" high			N/A
Toilet:			
18" from center to nearest side wall			N/A
42" minimum clear space from center to farthest wall or fixture			N/A
Top of seat 17"-19" above the floor			N/A
Grab Bars			
On back and side wall closest to toilet			N/A
1 1/4" diameter			N/A
1 1/2" clearance to wall			N/A
Located 30" above and parallel to the floor			N/A
Acid-etched or roughened surface			N/A
42" long			N/A
Fixtures			
Toilet paper dispenser is 24" above floor			N/A
One mirror set a maximum 38" to bottom (if tilted 42")			N/A
Dispenser (towel, soap, etc) at least one of each a maximum 42" above the floor			N/A

OPEN SPACE RECREATION PLAN
BUILDING INVENTORIES

DISTRICT: 1
LOCATION: **GREEN HILL PARK**
SKYLINE DRIVE
BUILDING: **FARM BARN**
BUILDING A



	Yes	No	Comments
Entrances			
Floors, drinking fountains, telephones			
Non-slip surface			
carpeting is high-density, low pile, non-absorbent stretched taut, securely anchored			N/A
Corridor width minimum is 3ft			N/A
Objects (signs, ceilings, fixtures) can only protrude 4" into the path of travel from a height of 27" to 80" above the floor			
Drinking fountains			
Spouts no higher than 36" from floor to outlet			N/A
Hand Operated push button or level controls			N/A
Spouts located near from with stream of water as parallel to front as possible			N/A
If recessed, recess a minimum 30" width, and no deeper than depth of fountain			N/A
If no clear knee space underneath, clear floor space 30" x 40" to allow parallel approach			N/A
Telephones			
Highest operating part a maximum 54" above the floor			N/A
Access within 12" of phone, 30" high by 30" width			N/A
Adjustable volume control on headset so identified			N/A
Switches, Controls, and Signs			
Switched and controls for light, heat, ventilation, windows, fire alarms, thermostats, etc, must be a minimum of 36" and a maximum of 48" above the floor for a forward reach, a maximum of 54" for a side reach			N/A
Electrical outlets centered no lower than 18" above the floor			N/A
Warnings signals must be visual as well as audible			N/A
Signs, Signals, and Switches			N/A
Mounting height must be 60" to centerline of the sign			N/A
Within 18" of door jamb or recessed			N/A
Letters and numbers at least 1 1/4" high			N/A
Letters and numbers raised .03"			N/A
Letters and numbers contrast with the background color			N/A

OPEN SPACE RECREATION PLAN
BUILDING INVENTORIES

DISTRICT: 1
LOCATION: GREEN HILL PARK
SKYLINE DRIVE
BUILDING: FARM RESTROOMS
BUILDING B



	Yes	No	Comments
Entrances			
Primary public entrances accessible to person using wheelchair, must be signed, gotten to independently, and not be the service entrance.			
Level space extending 5ft from the door, interior and exterior entrance doors			
Minimum 32" clear width opening (i.e. 36" door with standard hinge)			
At least 18" clear floor area on latch, pull side of door			
Door handle no higher than 48" and operable with a closed fist			
Vestibule is 4ft plus the width of the door swinging into the space			N/A
Entrance(s) on a level that makes elevators accessible			N/A
Door mats less than 1/2" thick are securely fastened			N/A
Door mats more than 1/2" thick are recessed			N/A
Grates in path of travel have openings of 1/2" maximum			N/A
Signs at non-accessible entrance(S) indicate direction to accessible entrance			N/A
Emergency egress - alarms with flashing lights and audible signals, sufficiently lighted			N/A

Stairs and Doors			
No open risers			N/A
Treads no less than 11" wide			N/A
Handrails on both sides			N/A
Handrails 34"-38" above tread			N/A
Handrail extends a minimum of 1ft beyond top and bottom riser (if no safety hazard permits)			N/A
Handgrip oval or round			N/A
Handgrip has a smooth surface			N/A
Handgrip diameter between 1 1/4" and 1 1/2"			N/A
1 1/2" clearance between wall and handrail			N/A
Doors			
Minimum 32" clear opening			
At least 18" clear floor space on pull side of door			
Closing speed minimum 3 seconds to within 3" of the latch			
Maximum pressure 5 pounds interior doors			
Threshold maximum 1/2" high, beveled on both sides			
Hardware operable with a closed fist (no conventional door knobs or thumb latch devices)			
Hardware minimum 36", maximum 48" above the floor			
Clear, level floor space extends out 5ft from both sides of the door			

OPEN SPACE RECREATION PLAN
BUILDING INVENTORIES

DISTRICT: 1
LOCATION: GREEN HILL PARK
SKYLINE DRIVE
BUILDING: FARM RESTROOMS
BUILDING B



	Yes	No	Comments
Door adjacent to revolving door is accessible and unlocked			N/A
Doors opening into hazardous area have hardware that is knurled or roughened			N/A

Restrooms			
5ft turn space measured 12" from the floor			
At least one sink:			
Clear floor space 30" by 48" to allow a forward approach			
Mounted without pedestal or legs, height 34" to top of rim			
Extends at least 22" from the wall			
Open knee space a minimum 19" deep, 30" width, and 27" high			2'9" SINK
Cover exposed pipes with insulation			
Faucets operable with closed fist (level or spring activated handle)			
At least one stall:			
Accessible to person using wheelchair at 60" wide or 72" inches deep			
Stall door is 36" wide			N/A
Stall door swings out			N/A
Stall door is self closing			N/A
Stall door has a pull latch			N/A
Lock on stall door is operable with a closed fist, and 32" above the floor			
Coat hook is 54" high			
Toilet:			
18" from center to nearest side wall			1'-8"
42" minimum clear space from center to farthest wall or fixture			
Top of seat 17"-19" above the floor			
Grab Bars			
On back and side wall closest to toilet			
1 1/4" diameter			
1 1/2" clearance to wall			
Located 30" above and parallel to the floor			
Acid-etched or roughened surface			
42" long			
Fixtures			
Toilet paper dispenser is 24" above floor			
One mirror set a maximum 38" to bottom (if tilted 42")			
Dispenser (towel, soap, etc) at least one of each a maximum 42" above the floor			

OPEN SPACE RECREATION PLAN
BUILDING INVENTORIES

DISTRICT: 1
LOCATION: GREEN HILL PARK
SKYLINE DRIVE
BUILDING: FARM RESTROOMS
BUILDING B



	Yes	No	Comments
Floors, drinking fountains, telephones			
Floors:			
Non-slip surface			
carpeting is high-density, low pile, non-absorbent stretched taut, securely anchored			N/A
Corridor width minimum is 3ft			
Objects (signs, ceilings, fixtures) can only protrude 4" into the path of travel from a height of 27" to 80" above the floor			
Drinking fountains			
Spouts no higher than 36" from floor to outlet			N/A
Hand Operated push button or level controls			N/A
Spouts located near from with stream of water as parallel to front as possible			N/A
If recessed, recess a minimum 30" width, and no deeper than depth of fountain			N/A
If no clear knee space underneath, clear floor space 30" x 40" to allow parallel approach			N/A
Telephones			
Highest operating part a maximum 54" above the floor			N/A
Access within 12" of phone, 30" high by 30" width			N/A
Adjustable volume control on headset so identified			N/A
Switches, Controls, and Signs			
Switched and controls for light, heat, ventilation, windows, fire alarms, thermostats, etc, must be a minimum of 36" and a maximum of 48" above the floor for a forward reach, a maximum of 54" for a side reach			
Electrical outlets centered no lower than 18" above the floor			
Warnings signals must be visual as well as audible			
Signs, Signals, and Switches			
Mounting height must be 60" to centerline of the sign			
Within 18" of door jamb or recessed			
Letters and numbers at least 1 1/4" high			
Letters and numbers raised .03"			
Letters and numbers contrast with the background color			

OPEN SPACE RECREATION PLAN
BUILDING INVENTORIES

DISTRICT: 1
LOCATION: **GREEN HILL PARK**
SKYLINE DRIVE
BUILDING **FARM RESTROOM BUILDING**



BUILDING C

	Yes	No	Comments
Entrances			
Primary public entrances accessible to person using wheelchair, must be signed, gotten to independently, and not be the service entrance.			
Level space extending 5ft from the door, interior and exterior entrance doors			
Minimum 32" clear width opening (i.e. 36" door with standard hinge)			
At least 18" clear floor area on latch, pull side of door			
Door handle no higher than 48" and operable with a closed fist			
Vestibule is 4ft plus the width of the door swinging into the space			
Entrance(s) on a level that makes elevators accessible			
Door mats less than 1/2" thick are securely fastened			
Door mats more than 1/2" thick are recessed			
Grates in path of travel have openings of 1/2" maximum			
Signs at non-accessible entrance(S) indicate direction to accessible entrance			
Emergency egress - alarms with flashing lights and audible signals, sufficiently lighted			

Stairs and Doors			
No open risers			N/A
Treads no less than 11" wide			N/A
Handrails on both sides			N/A
Handrails 34"-38" above tread			N/A
Handrail extends a minimum of 1ft beyond top and bottom riser (if no safety hazard permits)			N/A
Handgrip oval or round			N/A
Handgrip has a smooth surface			N/A
Handgrip diameter between 1 1/4" and 1 1/2"			N/A
1 1/2" clearance between wall and handrail			N/A
Doors			
Minimum 32" clear opening			
At least 18" clear floor space on pull side of door			
Closing speed minimum 3 seconds to within 3" of the latch			
Maximum pressure 5 pounds interior doors			
Threshold maximum 1/2" high, beveled on both sides			
Hardware operable with a closed fist (no conventional door knobs or thumb latch devices)			
Hardware minimum 36", maximum 48" above the floor			

OPEN SPACE RECREATION PLAN
BUILDING INVENTORIES

DISTRICT: 1
LOCATION: **GREEN HILL PARK**
SKYLINE DRIVE
BUILDING **FARM RESTROOM BUILDING**



BUILDING C

	Yes	No	Comments
Clear, level floor space extends out 5ft from both sides of the door			
Door adjacent to revolving door is accessible and unlocked			
Doors opening into hazardous area have hardware that is knurled or roughened			

Restrooms			
5ft turn space measured 12" from the floor			
At least one sink:			
Clear floor space 30" by 48" to allow a forward approach			
Mounted without pedestal or legs, height 34" to top of rim			
Extends at least 22" from the wall			
Open knee space a minimum 19" deep, 30" width, and 27" high			
Cover exposed pipes with insulation			
Faucets operable with closed fist (level or spring activated handle)			
At least one stall:			
Accessible to person using wheelchair at 60" wide or 72" inches deep			
Stall door is 36" wide			
Stall door swings out			
Stall door is self closing			
Stall door has a pull latch			
Lock on stall door is operable with a closed fist, and 32" above the floor			
Coat hook is 54" high			
Toilet:			
18" from center to nearest side wall			
42" minimum clear space from center to farthest wall or fixture			
Top of seat 17"-19" above the floor			
Grab Bars			
On back and side wall closest to toilet			
1 1/4" diameter			
1 1/2" clearance to wall			
Located 30" above and parallel to the floor			
Acid-etched or roughened surface			
42" long			
Fixtures			
Toilet paper dispenser is 24" above floor			
One mirror set a maximum 38" to bottom (if tilted 42")			
Dispenser (towel, soap, etc) at least one of each a maximum 42" above the floor			

Floors, drinking fountains, telephones

OPEN SPACE RECREATION PLAN
BUILDING INVENTORIES

DISTRICT: 1
LOCATION: **GREEN HILL PARK**
SKYLINE DRIVE
BUILDING **FARM RESTROOM BUILDING**



BUILDING C

	Yes	No	Comments
Non-slip surface			
carpeting is high-density, low pile, non-absorbent stretched taut, securely anchored			
Corridor width minimum is 3ft			
Objects (signs, ceilings, fixtures) can only protrude 4" into the path of travel from a height of 27" to 80" above the floor			
Drinking fountains			
Spouts no higher than 36" from floor to outlet			N/A
Hand Operated push button or level controls			N/A
Spouts located near from with stream of water as parallel to front as possible			N/A
If recessed, recess a minimum 30" width, and no deeper than depth of fountain			N/A
If no clear knee space underneath, clear floor space 30" x 40" to allow parallel approach			N/A
Telephones			
Highest operating part a maximum 54" above the floor			N/A
Access within 12" of phone, 30" high by 30" width			N/A
Adjustable volume control on headset so identified			N/A
Signs, Signals, and Switches			
Switches, Controls, and Signs			
Switched and controls for light, heat, ventilation, windows, fire alarms, thermostats, etc, must be a minimum of 36" and a maximum of 48" above the floor for a forward reach, a maximum of 54" for a side reach			
Electrical outlets centered no lower than 18" above the floor			
Warnings signals must be visual as well as audible			
Signs, Signals, and Switches			
Mounting height must be 60" to centerline of the sign			
Within 18" of door jamb or recessed			
Letters and numbers at least 1 1/4" high			
Letters and numbers raised .03"			
Letters and numbers contrast with the background color			

OPEN SPACE RECREATION PLAN
BUILDING INVENTORIES

DISTRICT: 1
LOCATION: BELL HILL PARK
BELMONT STREET
BUILDING: RESTROOMS



	Yes	No	Comments
Entrances			
Primary public entrances accessible to person using wheelchair, must be signed, gotten to independently, and not be the service entrance.			
Level space extending 5ft from the door, interior and exterior entrance doors			
Minimum 32" clear width opening (i.e. 36" door with standard hinge)			
At least 18" clear floor area on latch, pull side of door			
Door handle no higher than 48" and operable with a closed fist			
Vestibule is 4ft plus the width of the door swinging into the space			
Entrance(s) on a level that makes elevators accessible			N/A
Door mats less than 1/2" thick are securely fastened			N/A
Door mats more than 1/2" thick are recessed			N/A
Grates in path of travel have openings of 1/2" maximum			N/A
Signs at non-accessible entrance(S) indicate direction to accessible entrance			N/A
Emergency egress - alarms with flashing lights and audible signals, sufficiently lighted			

Stairs and Doors			
No open risers			N/A
Treads no less than 11" wide			N/A
Handrails on both sides			N/A
Handrails 34"-38" above tread			N/A
Handrail extends a minimum of 1ft beyond top and bottom riser (if no safety hazard permits)			N/A
Handgrip oval or round			N/A
Handgrip has a smooth surface			N/A
Handgrip diameter between 1 1/4" and 1 1/2"			N/A
1 1/2" clearance between wall and handrail			N/A
Doors			
<i>Specification</i>			
Minimum 32" clear opening			
At least 18" clear floor space on pull side of door			
Closing speed minimum 3 seconds to within 3" of the latch			
Maximum pressure 5 pounds interior doors			
Threshold maximum 1/2" high, beveled on both sides			
Hardware operable with a closed fist (no conventional door knobs or thumb latch devices)			
Hardware minimum 36", maximum 48" above the floor			
Clear, level floor space extends out 5ft from both sides of the door			

OPEN SPACE RECREATION PLAN
BUILDING INVENTORIES

DISTRICT: 1
LOCATION: BELL HILL PARK
BELMONT STREET
BUILDING: RESTROOMS



	Yes	No	Comments
Door adjacent to revolving door is accessible and unlocked			N/A
Doors opening into hazardous area have hardware that is knurled or roughened			N/A

Restrooms			
5ft turn space measured 12" from the floor			
At least one sink:			
Clear floor space 30" by 48" to allow a forward approach			
Mounted without pedestal or legs, height 34" to top of rim			
Extends at least 22" from the wall			
Open knee space a minimum 19" deep, 30" width, and 27" high			
Cover exposed pipes with insulation			
Faucets operable with closed fist (level or spring activated handle)			
At least one stall:			
Accessible to person using wheelchair at 60" wide or 72" inches deep			2'10" Clear space between toilet and door fram in women's ADA stall
Stall door is 36" wide			N/A
Stall door swings out			N/A
Stall door is self closing			N/A
Stall door has a pull latch			N/A
Lock on stall door is operable with a closed fist, and 32" above the floor			
Coat hook is 54" high			
Toilet:			
18" from center to nearest side wall			
42" minimum clear space from center to farthest wall or fixture			
Top of seat 17"-19" above the floor			
Grab Bars			
On back and side wall closest to toilet			
1 1/4" diameter			
1 1/2" clearance to wall			
Located 30" above and parallel to the floor			
Acid-etched or roughened surface			
42" long			
Fixtures			
Toilet paper dispenser is 24" above floor			
One mirror set a maximum 38" to bottom (if tilted 42")			
Dispenser (towel, soap, etc) at least one of each a maximum 42" above the floor			

Floors, drinking fountains, telephones			
Non-slip surface			
carpeting is high-density, low pile, non-absorbent stretched taut, securely anchored			N/A
Corridor width minimum is 3ft			

OPEN SPACE RECREATION PLAN
BUILDING INVENTORIES

DISTRICT: 1
LOCATION: BELL HILL PARK
BELMONT STREET
BUILDING: RESTROOMS



	Yes	No	Comments
Objects (signs, ceilings, fixtures) can only protrude 4" into the path of travel from a height of 27" to 80" above the floor			
Drinking fountains			
Spouts no higher than 36" from floor to outlet			N/A
Hand Operated push button or level controls			N/A
Spouts located near from with stream of water as parallel to front as possible			N/A
If recessed, recess a minimum 30" width, and no deeper than depth of fountain			N/A
If no clear knee space underneath, clear floor space 30" x 40" to allow parallel approach			N/A
Telephones			
Highest operating part a maximum 54" above the floor			N/A
Access within 12" of phone, 30" high by 30" width			N/A
Adjustable volume control on headset so identified			N/A
Switches, Controls, and Signs			
Switched and controls for light, heat, ventilation, windows, fire alarms, thermostats, etc, must be a minimum of 36" and a maximum of 48" above the floor for a forward reach, a maximum of 54" for a side reach			
Electrical outlets centered no lower than 18" above the floor			
Warnings signals must be visual as well as audible			
Signs, Signals, and Switches			
Mounting height must be 60" to centerline of the sign			
Within 18" of door jamb or recessed			
Letters and numbers at least 1 1/4" high			
Letters and numbers raised .03"			
Letters and numbers contrast with the background color			

OPEN SPACE RECREATION PLAN
BUILDING INVENTORIES

DISTRICT: 1
LOCATION: SHORE PARK
SHORE DRIVE
BUILDING: RESTROOMS



	Yes	No	Comments
Entrances			
Primary public entrances accessible to person using wheelchair, must be signed, gotten to independently, and not be the service entrance.			
Level space extending 5ft from the door, interior and exterior entrance doors			
Minimum 32" clear width opening (i.e. 36" door with standard hinge)			
At least 18" clear floor area on latch, pull side of door			
Door handle no higher than 48" and operable with a closed fist			
Vestibule is 4ft plus the width of the door swinging into the space			
Entrance(s) on a level that makes elevators accessible			N/A
Door mats less than 1/2" thick are securely fastened			N/A
Door mats more than 1/2" thick are recessed			N/A
Grates in path of travel have openings of 1/2" maximum			N/A
Signs at non-accessible entrance(S) indicate direction to accessible entrance			N/A
Emergency egress - alarms with flashing lights and audible signals, sufficiently lighted			

Stairs and Doors			
<i>Specification</i>			
No open risers			N/A
Treads no less than 11" wide			N/A
Handrails on both sides			N/A
Handrails 34"-38" above tread			N/A
Handrail extends a minimum of 1ft beyond top and bottom riser (if no safety hazard permits)			N/A
Handgrip oval or round			N/A
Handgrip has a smooth surface			N/A
Handgrip diameter between 1 1/4" and 1 1/2"			N/A
1 1/2" clearance between wall and handrail			N/A
Doors			
<i>Specification</i>			
Minimum 32" clear opening			
At least 18" clear floor space on pull side of door			
Closing speed minimum 3 seconds to within 3" of the latch			

OPEN SPACE RECREATION PLAN
BUILDING INVENTORIES

DISTRICT: 1
LOCATION: SHORE PARK
SHORE DRIVE
BUILDING: RESTROOMS



	Yes	No	Comments
Maximum pressure 5 pounds interior doors			
Threshold maximum 1/2" high, beveled on both sides			
Hardware operable with a closed fist (no conventional door knobs or thumb latch devices)			
Hardware minimum 36", maximum 48" above the floor			
Clear, level floor space extends out 5ft from both sides of the door			
Door adjacent to revolving door is accessible and unlocked			N/A
Doors opening into hazardous area have hardware that is knurled or roughened			N/A

Restrooms			
<i>Specification</i>			
5ft turn space measured 12" from the floor			
At least one sink:			
Clear floor space 30" by 48" to allow a forward approach			
Mounted without pedestal or legs, height 34" to top of rim			
Extends at least 22" from the wall			
Open knee space a minimum 19" deep, 30" width, and 27" high			
Cover exposed pipes with insulation			
Faucets operable with closed fist (level or spring activated handle)			
At least one stall:			
Accessible to person using wheelchair at 60" wide or 72" inches deep			
Stall door is 36" wide			N/A
Stall door swings out			N/A
Stall door is self closing			N/A
Stall door has a pull latch			N/A
Lock on stall door is operable with a closed fist, and 32" above the floor			
Coat hook is 54" high			
Toilet:			
18" from center to nearest side wall			
42" minimum clear space from center to farthest wall or fixture			
Top of seat 17"-19" above the floor			
Grab Bars			

OPEN SPACE RECREATION PLAN
BUILDING INVENTORIES

DISTRICT: 1
LOCATION: SHORE PARK
SHORE DRIVE
BUILDING: RESTROOMS



	Yes	No	Comments
On back and side wall closest to toilet			
1 1/4" diameter			
1 1/2" clearance to wall			
Located 30" above and parallel to the floor			
Acid-etched or roughened surface			
42" long			
Fixtures			
Toilet paper dispenser is 24" above floor			
One mirror set a maximum 38" to bottom (if tilted 42")			
Dispenser (towel, soap, etc) at least one of each a maximum 42" above the floor			

Floors, drinking fountains, telephones			
<i>floors:</i>			
Non-slip surface			
carpeting is high-density, low pile, non-absorbent stretched taut, securely anchored			N/A
Corridor width minimum is 3ft			N/A
Objects (signs, ceilings, fixtures) can only protrude 4" into the path of travel from a height of 27" to 80" above the floor			
Drinking fountains			
Spouts no higher than 36" from floor to outlet			N/A
Hand Operated push button or level controls			N/A
Spouts located near from with stream of water as parallel to front as possible			N/A
If recessed, recess a minimum 30" width, and no deeper than depth of fountain			N/A
If no clear knee space underneath, clear floor space 30" x 40" to allow parallel approach			N/A
Telephones			
<i>Specification</i>			
Highest operating part a maximum 54" above the floor			N/A
Access within 12" of phone, 30" high by 30" width			N/A
Adjustable volume control on headset so identified			N/A
Signs, Signals, and Switches			
Switches, Controls, and Signs			

OPEN SPACE RECREATION PLAN
BUILDING INVENTORIES

DISTRICT: 1
LOCATION: SHORE PARK
SHORE DRIVE
BUILDING: RESTROOMS



	Yes	No	Comments
Switched and controls for light, heat, ventilation, windows, fire alarms, thermostats, etc, must be a minimum of 36" and a maximum of 48" above the floor for a forward reach, a maximum of 54" for a side reach			
Electrical outlets centered no lower than 18" above the floor			
Warnings signals must be visual as well as audible			
Signs, Signals, and Switches			
Mounting height must be 60" to centerline of the sign			
Within 18" of door jamb or recessed			
Letters and numbers at least 1 1/4" high			
Letters and numbers raised .03"			
Letters and numbers contrast with the background color			

OPEN SPACE RECREATION PLAN
BUILDING INVENTORIES

DISTRICT: 1
LOCATION: INDIAN LAKE BEACH
CLASON ROAD
BUILDING: RESTROOMS



	Yes	No	Comments
Entrances			
Primary public entrances accessible to person using wheelchair, must be signed, gotten to independently, and not be the service entrance.			4" Threshold
Level space extending 5ft from the door, interior and exterior entrance doors			not level
Minimum 32" clear width opening (i.e. 36" door with standard hinge)			30" clear width
At least 18" clear floor area on latch, pull side of door			
Door handle no higher than 48" and operable with a closed fist			
Vestibule is 4ft plus the width of the door swinging into the space			
Entrance(s) on a level that makes elevators accessible			N/A
Door mats less than 1/2" thick are securely fastened			N/A
Door mats more than 1/2" thick are recessed			N/A
Grates in path of travel have openings of 1/2" maximum			N/A
Signs at non-accessible entrance(S) indicate direction to accessible entrance			N/A
Emergency egress - alarms with flashing lights and audible signals, sufficiently lighted			
Stairs and Doors			
No open risers			N/A
Treads no less than 11" wide			N/A
Handrails on both sides			N/A
Handrails 34"-38" above tread			N/A
Handrail extends a minimum of 1ft beyond top and bottom riser (if no safety hazard permits)			N/A
Handgrip oval or round			N/A
Handgrip has a smooth surface			N/A
Handgrip diameter between 1 1/4" and 1 1/2"			N/A
1 1/2" clearance between wall and handrail			N/A
Doors			
<i>Specification</i>			
Minimum 32" clear opening			2'6" door opening
At least 18" clear floor space on pull side of door			
Closing speed minimum 3 seconds to within 3" of the latch			
Maximum pressure 5 pounds interior doors			
Threshold maximum 1/2" high, beveled on both sides			4" threshold
Hardware operable with a closed fist (no conventional door knobs or thumb latch devices)			
Hardware minimum 36", maximum 48" above the floor			

OPEN SPACE RECREATION PLAN
BUILDING INVENTORIES

DISTRICT: 1
LOCATION: INDIAN LAKE BEACH
CLASON ROAD
BUILDING: RESTROOMS



	Yes	No	Comments
Clear, level floor space extends out 5ft from both sides of the door			
Door adjacent to revolving door is accessible and unlocked			N/A
Doors opening into hazardous area have hardware that is knurled or roughened			N/A

Restrooms			
5ft turn space measured 12" from the floor			
At least one sink:			
Clear floor space 30" by 48" to allow a forward approach			
Mounted without pedestal or legs, height 34" to top of rim			
Extends at least 22" from the wall			
Open knee space a minimum 19" deep, 30" width, and 27" high			
Cover exposed pipes with insulation			
Faucets operable with closed fist (level or spring activated handle)			
At least one stall:			
Accessible to person using wheelchair at 60" wide or 72" inches deep			
Stall door is 36" wide			
Stall door swings out			
Stall door is self closing			
Stall door has a pull latch			
Lock on stall door is operable with a closed fist, and 32" above the floor			
Coat hook is 54" high			
Toilet:			
18" from center to nearest side wall			
42" minimum clear space from center to farthest wall or fixture			
Top of seat 17"-19" above the floor			
Grab Bars			
On back and side wall closest to toilet			NO GRAB BARS
1 1/4" diameter			NO GRAB BARS
1 1/2" clearance to wall			NO GRAB BARS
Located 30" above and parallel to the floor			NO GRAB BARS
Acid-etched or roughened surface			NO GRAB BARS
42" long			NO GRAB BARS
Fixtures			
Toilet paper dispenser is 24" above floor			
One mirror set a maximum 38" to bottom (if tilted 42")			no mirror
Dispenser (towel, soap, etc) at least one of each a maximum 42" above the floor			no mounted dispensers

Floors, drinking fountains, telephones

OPEN SPACE RECREATION PLAN
BUILDING INVENTORIES

DISTRICT: 1
LOCATION: INDIAN LAKE BEACH
CLASON ROAD
BUILDING: RESTROOMS



	Yes	No	Comments
floors:			
Non-slip surface			
carpeting is high-density, low pile, non-absorbent stretched taut, securely anchored			N/A
Corridor width minimum is 3ft			N/A
Objects (signs, ceilings, fixtures) can only protrude 4" into the path of travel from a height of 27" to 80" above the floor			
Drinking fountains			
Spouts no higher than 36" from floor to outlet			
Hand Operated push button or level controls			N/A
Spouts located near from with stream of water as parallel to front as possible			N/A
If recessed, recess a minimum 30" width, and no deeper than depth of fountain			N/A
If no clear knee space underneath, clear floor space 30" x 40" to allow parallel approach			N/A
Telephones			
Highest operating part a maximum 54" above the floor			N/A
Access within 12" of phone, 30" high by 30" width			N/A
Adjustable volume control on headset so identified			N/A
Switches, Controls, and Signs			
Switched and controls for light, heat, ventilation, windows, fire alarms, thermostats, etc, must be a minimum of 36" and a maximum of 48" above the floor for a forward reach, a maximum of 54" for a side reach			
Electrical outlets centered no lower than 18" above the floor			
Warnings signals must be visual as well as audible			
Signs, Signals, and Switches			
Mounting height must be 60" to centerline of the sign			
Within 18" of door jamb or recessed			
Letters and numbers at least 1 1/4" high			
Letters and numbers raised .03"			
Letters and numbers contrast with the background color			

Notes:

Life guard area does not comply with fixture heights
ad pipe insulating

OPEN SPACE RECREATION PLAN
BUILDING INVENTORIES

DISTRICT: 2
LOCATION: INSTITUTE PARK
SALISBURY ST (O'CONNELL)
BUILDING: RESTROOMS & CONCESSIONS



	Yes	No	Comments
Entrances			
Primary public entrances accessible to person using wheelchair, must be signed, gotten to independently, and not be the service entrance.			
Level space extending 5ft from the door, interior and exterior entrance doors			
Minimum 32" clear width opening (i.e. 36" door with standard hinge)			
At least 18" clear floor area on latch, pull side of door			
Door handle no higher than 48" and operable with a closed fist			
Vestibule is 4ft plus the width of the door swinging into the space			
Entrance(s) on a level that makes elevators accessible			N/A
Door mats less than 1/2" thick are securely fastened			N/A
Door mats more than 1/2" thick are recessed			N/A
Grates in path of travel have openings of 1/2" maximum			N/A
Signs at non-accessible entrance(S) indicate direction to accessible entrance			N/A
Emergency egress - alarms with flashing lights and audible signals, sufficiently lighted			

Stairs and Doors			
<i>Specification</i>			
No open risers			N/A
Treads no less than 11" wide			N/A
Handrails on both sides			N/A
Handrails 34"-38" above tread			N/A
Handrail extends a minimum of 1ft beyond top and bottom riser (if no safety hazard permits)			N/A
Handgrip oval or round			N/A
Handgrip has a smooth surface			N/A
Handgrip diameter between 1 1/4" and 1 1/2"			N/A
1 1/2" clearance between wall and handrail			N/A
Doors			
<i>Specification</i>			
Minimum 32" clear opening			
At least 18" clear floor space on pull side of door			
Closing speed minimum 3 seconds to within 3" of the latch			
Maximum pressure 5 pounds interior doors			
Threshold maximum 1/2" high, beveled on both sides			3/4" - 1"
Hardware operable with a closed fist (no conventional door knobs or thumb latch devices)			

OPEN SPACE RECREATION PLAN
BUILDING INVENTORIES

DISTRICT: 2
LOCATION: INSTITUTE PARK
SALISBURY ST (O'CONNELL)
BUILDING: RESTROOMS & CONCESSIONS



	Yes	No	Comments
Hardware minimum 36", maximum 48" above the floor			
Clear, level floor space extends out 5ft from both sides of the door			
Door adjacent to revolving door is accessible and unlocked			N/A
Doors opening into hazardous area have hardware that is knurled or roughened			N/A

Restrooms			
<i>Specification</i>			
5ft turn space measured 12" from the floor			
At least one sink:			
Clear floor space 30" by 48" to allow a forward approach			
Mounted without pedestal or legs, height 34" to top of rim			
Extends at least 22" from the wall			
Open knee space a minimum 19" deep, 30" width, and 27" high			
Cover exposed pipes with insulation			
Faucets operable with closed fist (level or spring activated handle)			
At least one stall:			
Accessible to person using wheelchair at 60" wide or 72" inches deep			4'10" x 6'
Stall door is 36" wide			N/A
Stall door swings out			N/A
Stall door is self closing			N/A
Stall door has a pull latch			N/A
Lock on stall door is operable with a closed fist, and 32" above the floor			N/A
Coat hook is 54" high			
Toilet:			
18" from center to nearest side wall			
42" minimum clear space from center to farthest wall or fixture			
Top of seat 17"-19" above the floor			
Grab Bars			
On back and side wall closest to toilet			
1 1/4" diameter			
1 1/2" clearance to wall			
Located 30" above and parallel to the floor			
Acid-etched or roughened surface			
42" long			
Fixtures			
Toilet paper dispenser is 24" above floor			
One mirror set a maximum 38" to bottom (if tilted 42")			

OPEN SPACE RECREATION PLAN
BUILDING INVENTORIES

DISTRICT: 2
LOCATION: INSTITUTE PARK
SALISBURY ST (O'CONNELL)
BUILDING: RESTROOMS & CONCESSIONS



	Yes	No	Comments
Dispenser (towel, soap, etc) at least one of each a maximum 42" above the floor			

Floors, drinking fountains, telephones			
<i>floors:</i>			
Non-slip surface			
carpeting is high-density, low pile, non-absorbent stretched taut, securely anchored			N/A
Corridor width minimum is 3ft			
Objects (signs, ceilings, fixtures) can only protrude 4" into the path of travel from a height of 27" to 80" above the floor			
Drinking fountains			
Spouts no higher than 36" from floor to outlet			N/A
Hand Operated push button or level controls			N/A
Spouts located near from with stream of water as parallel to front as possible			N/A
If recessed, recess a minimum 30" width, and no deeper than depth of fountain			N/A
If no clear knee space underneath, clear floor space 30" x 40" to allow parallel approach			N/A
Telephones			
<i>Specification</i>			
Highest operating part a maximum 54" above the floor			N/A
Access within 12" of phone, 30" high by 30" width			N/A
Adjustable volume control on headset so identified			N/A
Switches, Controls, and Signs			
Switched and controls for light, heat, ventilation, windows, fire alarms, thermostats, etc, must be a minimum of 36" and a maximum of 48" above the floor for a forward reach, a maximum of 54" for a side reach			
Electrical outlets centered no lower than 18" above the floor			
Warnings signals must be visual as well as audible			
Signs, Signals, and Switches			
Mounting height must be 60" to centerline of the sign			
Within 18" of door jamb or recessed			
Letters and numbers at least 1 1/4" high			
Letters and numbers raised .03"			
Letters and numbers contrast with the background color			

OPEN SPACE RECREATION PLAN
BUILDING INVENTORIES

DISTRICT: 3
LOCATION: MULCAHY FIELD
DORCESTER ST
BUILDING: RESTROOMS



	Yes	No	Comments
Entrances			
Primary public entrances accessible to person using wheelchair, must be signed, gotten to independently, and not be the service entrance.			
Level space extending 5ft from the door, interior and exterior entrance doors			
Minimum 32" clear width opening (i.e. 36" door with standard hinge)			
At least 18" clear floor area on latch, pull side of door			
Door handle no higher than 48" and operable with a closed fist			
Vestibule is 4ft plus the width of the door swinging into the space			
Entrance(s) on a level that makes elevators accessible			N/A
Door mats less than 1/2" thick are securely fastened			N/A
Door mats more than 1/2" thick are recessed			N/A
Grates in path of travel have openings of 1/2" maximum			N/A
Signs at non-accessible entrance(S) indicate direction to accessible entrance			N/A
Emergency egress - alarms with flashing lights and audible signals, sufficiently lighted			

Stairs and Doors			
<i>Specification</i>			
No open risers			N/A
Treads no less than 11" wide			N/A
Handrails on both sides			N/A
Handrails 34"-38" above tread			N/A
Handrail extends a minimum of 1ft beyond top and bottom riser (if no safety hazard permits)			N/A
Handgrip oval or round			N/A
Handgrip has a smooth surface			N/A
Handgrip diameter between 1 1/4" and 1 1/2"			N/A
1 1/2" clearance between wall and handrail			N/A
Minimum 32" clear opening			
At least 18" clear floor space on pull side of door			
Closing speed minimum 3 seconds to within 3" of the latch			
Maximum pressure 5 pounds interior doors			
Threshold maximum 1/2" high, beveled on both sides			
Hardware operable with a closed fist (no conventional door knobs or thumb latch devices)			
Hardware minimum 36", maximum 48" above the floor			

OPEN SPACE RECREATION PLAN
BUILDING INVENTORIES



DISTRICT: 3
LOCATION: MULCAHY FIELD
DORCESTER ST
BUILDING: RESTROOMS

	Yes	No	Comments
Clear, level floor space extends out 5ft from both sides of the door			
Door adjacent to revolving door is accessible and unlocked			N/A
Doors opening into hazardous area have hardware that is knurled or roughened			N/A

Restrooms			
<i>Specification</i>			
5ft turn space measured 12" from the floor			
At least one sink:			
Clear floor space 30" by 48" to allow a forward approach			
Mounted without pedestal or legs, height 34" to top of rim			
Extends at least 22" from the wall			
Open knee space a minimum 19" deep, 30" width, and 27" high			
Cover exposed pipes with insulation			
Faucets operable with closed fist (level or spring activated handle)			
At least one stall:			
Accessible to person using wheelchair at 60" wide or 72" inches deep			
Stall door is 36" wide			N/A
Stall door swings out			N/A
Stall door is self closing			N/A
Stall door has a pull latch			N/A
Lock on stall door is operable with a closed fist, and 32" above the floor			
Coat hook is 54" high			
Toilet:			
18" from center to nearest side wall			
42" minimum clear space from center to farthest wall or fixture			
Top of seat 17"-19" above the floor			
Grab Bars			
On back and side wall closest to toilet			
1 1/4" diameter			
1 1/2" clearance to wall			
Located 30" above and parallel to the floor			
Acid-etched or roughened surface			
42" long			
Fixtures			
Toilet paper dispenser is 24" above floor			
One mirror set a maximum 38" to bottom (if tilted 42")			
Dispenser (towel, soap, etc) at least one of each a maximum 42" above the floor			

OPEN SPACE RECREATION PLAN
BUILDING INVENTORIES



DISTRICT: 3
LOCATION: MULCAHY FIELD
DORCESTER ST
BUILDING: RESTROOMS

	Yes	No	Comments
Floors, drinking fountains, telephones			
<i>floors:</i>			
Non-slip surface			N/A
carpeting is high-density, low pile, non-absorbent stretched taut, securely anchored			N/A
Corridor width minimum is 3ft			N/A
Objects (signs, ceilings, fixtures) can only protrude 4" into the path of travel from a height of 27" to 80" above the floor			
Drinking fountains			
Spouts no higher than 36" from floor to outlet			N/A
Hand Operated push button or level controls			N/A
Spouts located near from with stream of water as parallel to front as possible			N/A
If recessed, recess a minimum 30" width, and no deeper than depth of fountain			N/A
If no clear knee space underneath, clear floor space 30" x 40" to allow parallel approach			N/A
Telephones			
<i>Specification</i>			
Highest operating part a maximum 54" above the floor			N/A
Access within 12" of phone, 30" high by 30" width			N/A
Adjustable volume control on headset so identified			N/A
Signs, Signals, and Switches			
Switches, Controls, and Signs			
Switched and controls for light, heat, ventilation, windows, fire alarms, thermostats, etc, must be a minimum of 36" and a maximum of 48" above the floor for a forward reach, a maximum of 54" for a side reach			
Electrical outlets centered no lower than 18" above the floor			
Warnings signals must be visual as well as audible			
Signs, Signals, and Switches			
Mounting height must be 60" to centerline of the sign			
Within 18" of door jamb or recessed			
Letters and numbers at least 1 1/4" high			
Letters and numbers raised .03"			
Letters and numbers contrast with the background color			

OPEN SPACE RECREATION PLAN
BUILDING INVENTORIES

DISTRICT: 3
LOCATION: VERNON HILL PARK
PROVIDENCE ST
BUILDING: RESTROOMS



	Yes	No	Comments
Entrances			
Primary public entrances accessible to person using wheelchair, must be signed, gotten to independently, and not be the service entrance.			
Level space extending 5ft from the door, interior and exterior entrance doors			
Minimum 32" clear width opening (i.e. 36" door with standard hinge)			
At least 18" clear floor area on latch, pull side of door			
Door handle no higher than 48" and operable with a closed fist			
Vestibule is 4ft plus the width of the door swinging into the space			
Entrance(s) on a level that makes elevators accessible			N/A
Door mats less than 1/2" thick are securely fastened			N/A
Door mats more than 1/2" thick are recessed			N/A
Grates in path of travel have openings of 1/2" maximum			N/A
Signs at non-accessible entrance(S) indicate direction to accessible entrance			N/A
Emergency egress - alarms with flashing lights and audible signals, sufficiently lighted			
Stairs and Doors			
No open risers			N/A
Treads no less than 11" wide			N/A
Handrails on both sides			N/A
Handrails 34"-38" above tread			N/A
Handrail extends a minimum of 1ft beyond top and bottom riser (if no safety hazard permits)			N/A
Handgrip oval or round			N/A
Handgrip has a smooth surface			N/A
Handgrip diameter between 1 1/4" and 1 1/2"			N/A
1 1/2" clearance between wall and handrail			N/A
Doors			
<i>Specification</i>			
Minimum 32" clear opening			
At least 18" clear floor space on pull side of door			
Closing speed minimum 3 seconds to within 3" of the latch			
Maximum pressure 5 pounds interior doors			
Threshold maximum 1/2" high, beveled on both sides			
Hardware operable with a closed fist (no conventional door knobs or thumb latch devices)			
Hardware minimum 36", maximum 48" above the floor			

OPEN SPACE RECREATION PLAN
BUILDING INVENTORIES

DISTRICT: 3
LOCATION: VERNON HILL PARK
PROVIDENCE ST
BUILDING: RESTROOMS



	Yes	No	Comments
Clear, level floor space extends out 5ft from both sides of the door			
Door adjacent to revolving door is accessible and unlocked			
Doors opening into hazardous area have hardware that is knurled or roughened			N/A

Restrooms			
<i>Specification</i>			
5ft turn space measured 12" from the floor			
At least one sink:			
Clear floor space 30" by 48" to allow a forward approach			
Mounted without pedestal or legs, height 34" to top of rim			
Extends at least 22" from the wall			
Open knee space a minimum 19" deep, 30" width, and 27" high			
Cover exposed pipes with insulation			
Faucets operable with closed fist (level or spring activated handle)			
At least one stall:			
Accessible to person using wheelchair at 60" wide or 72" inches deep			
Stall door is 36" wide			N/A
Stall door swings out			N/A
Stall door is self closing			N/A
Stall door has a pull latch			N/A
Lock on stall door is operable with a closed fist, and 32" above the floor			
Coat hook is 54" high			
Toilet:			
18" from center to nearest side wall			
42" minimum clear space from center to farthest wall or fixture			
Top of seat 17"-19" above the floor			
Grab Bars			
On back and side wall closest to toilet			
1 1/4" diameter			
1 1/2" clearance to wall			
Located 30" above and parallel to the floor			
Acid-etched or roughened surface			
42" long			
Fixtures			
Toilet paper dispenser is 24" above floor			
One mirror set a maximum 38" to bottom (if tilted 42")			
Dispenser (towel, soap, etc) at least one of each a maximum 42" above the floor			

OPEN SPACE RECREATION PLAN
BUILDING INVENTORIES

DISTRICT: 3
LOCATION: VERNON HILL PARK
PROVIDENCE ST
BUILDING: RESTROOMS



	Yes	No	Comments
Floors, drinking fountains, telephones			
<i>floors:</i>			
Non-slip surface			
carpeting is high-density, low pile, non-absorbent stretched taut, securely anchored			N/A
Corridor width minimum is 3ft			N/A
Objects (signs, ceilings, fixtures) can only protrude 4" into the path of travel from a height of 27" to 80" above the floor			
Drinking fountains			
Spouts no higher than 36" from floor to outlet			N/A
Hand Operated push button or level controls			N/A
Spouts located near from with stream of water as parallel to front as possible			N/A
If recessed, recess a minimum 30" width, and no deeper than depth of fountain			N/A
If no clear knee space underneath, clear floor space 30" x 40" to allow parallel approach			N/A
Telephones			
<i>Specification</i>			
Highest operating part a maximum 54" above the floor			N/A
Access within 12" of phone, 30" high by 30" width			N/A
Adjustable volume control on headset so identified			N/A
Signs, Signals, and Switches			
Switches, Controls, and Signs			
Switched and controls for light, heat, ventilation, windows, fire alarms, thermostats, etc, must be a minimum of 36" and a maximum of 48" above the floor for a forward reach, a maximum of 54" for a side reach			
Electrical outlets centered no lower than 18" above the floor			
Warnings signals must be visual as well as audible			
Signs, Signals, and Switches			
Mounting height must be 60" to centerline of the sign			
Within 18" of door jamb or recessed			
Letters and numbers at least 1 1/4" high			
Letters and numbers raised .03"			
Letters and numbers contrast with the background color			

OPEN SPACE RECREATION PLAN
BUILDING INVENTORIES

DISTRICT: 3
LOCATION: GREENWOOD PARK
FORESBERG
BUILDING: SPLASH ZONE RESTROOMS



	Yes	No	Comments
Entrances			
Primary public entrances accessible to person using wheelchair, must be signed, gotten to independently, and not be the service entrance.			
Level space extending 5ft from the door, interior and exterior entrance doors			
Minimum 32" clear width opening (i.e. 36" door with standard hinge)			
At least 18" clear floor area on latch, pull side of door			
Door handle no higher than 48" and operable with a closed fist			
Vestibule is 4ft plus the width of the door swinging into the space			
Entrance(s) on a level that makes elevators accessible			N/A
Door mats less than 1/2" thick are securely fastened			N/A
Door mats more than 1/2" thick are recessed			N/A
Grates in path of travel have openings of 1/2" maximum			N/A
Signs at non-accessible entrance(S) indicate direction to accessible entrance			N/A
Emergency egress - alarms with flashing lights and audible signals, sufficiently lighted			
Stairs and Doors			
<i>Specification</i>			
No open risers			N/A
Treads no less than 11" wide			N/A
Handrails on both sides			N/A
Handrails 34"-38" above tread			N/A
Handrail extends a minimum of 1ft beyond top and bottom riser (if no safety hazard permits)			N/A
Handgrip oval or round			N/A
Handgrip has a smooth surface			N/A
Handgrip diameter between 1 1/4" and 1 1/2"			N/A
1 1/2" clearance between wall and handrail			N/A
Doors			
<i>Specification</i>			
Minimum 32" clear opening			
At least 18" clear floor space on pull side of door			
Closing speed minimum 3 seconds to within 3" of the latch			
Maximum pressure 5 pounds interior doors			
Threshold maximum 1/2" high, beveled on both sides			
Hardware operable with a closed fist (no conventional door knobs or thumb latch devices)			

OPEN SPACE RECREATION PLAN
BUILDING INVENTORIES

DISTRICT: 3
LOCATION: GREENWOOD PARK
FORESBERG
BUILDING: SPLASH ZONE RESTROOMS

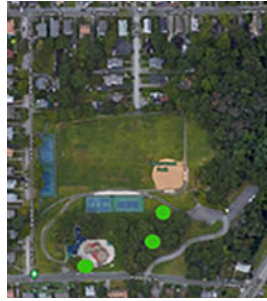


	Yes	No	Comments
Hardware minimum 36", maximum 48" above the floor			
Clear, level floor space extends out 5ft from both sides of the door			
Door adjacent to revolving door is accessible and unlocked			N/A
Doors opening into hazardous area have hardware that is knurled or roughened			N/A

Restrooms			
<i>Specification</i>			
5ft turn space measured 12" from the floor			
At least one sink:			
Clear floor space 30" by 48" to allow a forward approach			
Mounted without pedestal or legs, height 34" to top of rim			
Extends at least 22" from the wall			
Open knee space a minimum 19" deep, 30" width, and 27" high			
Cover exposed pipes with insulation			
Faucets operable with closed fist (level or spring activated handle)			
At least one stall:			
Accessible to person using wheelchair at 60" wide or 72" inches deep			
Stall door is 36" wide			N/A
Stall door swings out			N/A
Stall door is self closing			N/A
Stall door has a pull latch			N/A
Lock on stall door is operable with a closed fist, and 32" above the floor			
Coat hook is 54" high			
Toilet:			
18" from center to nearest side wall			
42" minimum clear space from center to farthest wall or fixture			
Top of seat 17"-19" above the floor			
Grab Bars			
On back and side wall closest to toilet			
1 1/4" diameter			
1 1/2" clearance to wall			
Located 30" above and parallel to the floor			
Acid-etched or roughened surface			
42" long			
Fixtures			
Toilet paper dispenser is 24" above floor			
One mirror set a maximum 38" to bottom (if tilted 42")			

OPEN SPACE RECREATION PLAN
BUILDING INVENTORIES

DISTRICT: 3
LOCATION: GREENWOOD PARK
FORESBERG
BUILDING: SPLASH ZONE RESTROOMS



	Yes	No	Comments
Dispenser (towel, soap, etc) at least one of each a maximum 42" above the floor			

Floors, drinking fountains, telephones			
<i>floors:</i>			
Non-slip surface			
carpeting is high-density, low pile, non-absorbent stretched taut, securely anchored			N/A
Corridor width minimum is 3ft			N/A
Objects (signs, ceilings, fixtures) can only protrude 4" into the path of travel from a height of 27" to 80" above the floor			
Drinking fountains			
Spouts no higher than 36" from floor to outlet			
Hand Operated push button or level controls			N/A
Spouts located near from with stream of water as parallel to front as possible			N/A
If recessed, recess a minimum 30" width, and no deeper than depth of fountain			N/A
If no clear knee space underneath, clear floor space 30" x 40" to allow parallel approach			N/A
Telephones			
<i>Specification</i>			
Highest operating part a maximum 54" above the floor			N/A
Access within 12" of phone, 30" high by 30" width			N/A
Adjustable volume control on headset so identified			N/A
Signs, Signals, and Switches			
Switches, Controls, and Signs			
Switched and controls for light, heat, ventilation, windows, fire alarms, thermostats, etc, must be a minimum of 36" and a maximum of 48" above the floor for a forward reach, a maximum of 54" for a side reach			N/A
Electrical outlets centered no lower than 18" above the floor			N/A
Warnings signals must be visual as well as audible			N/A
Signs, Signals, and Switches			N/A
Mounting height must be 60" to centerline of the sign			N/A
Within 18" of door jamb or recessed			N/A
Letters and numbers at least 1 1/4" high			N/A
Letters and numbers raised .03"			N/A
Letters and numbers contrast with the background color			N/A

OPEN SPACE RECREATION PLAN
BUILDING INVENTORIES

DISTRICT: 4
LOCATION: HARRY SHERRY FIELD
(S. WORCESTER) CAMBRIDGE ST
BUILDING: PG, RR, CONCESSIONS



	Yes	No	Comments
Entrances			
Primary public entrances accessible to person using wheelchair, must be signed, gotten to independently, and not be the service entrance.			
Level space extending 5ft from the door, interior and exterior entrance doors			
Minimum 32" clear width opening (i.e. 36" door with standard hinge)			
At least 18" clear floor area on latch, pull side of door			
Door handle no higher than 48" and operable with a closed fist			
Vestibule is 4ft plus the width of the door swinging into the space			
Entrance(s) on a level that makes elevators accessible			N/A
Door mats less than 1/2" thick are securely fastened			N/A
Door mats more than 1/2" thick are recessed			N/A
Grates in path of travel have openings of 1/2" maximum			N/A
Signs at non-accessible entrance(S) indicate direction to accessible entrance			N/A
Emergency egress - alarms with flashing lights and audible signals, sufficiently lighted			

Stairs and Doors			
<i>Specification</i>			
No open risers			N/A
Treads no less than 11" wide			N/A
Handrails on both sides			N/A
Handrails 34"-38" above tread			N/A
Handrail extends a minimum of 1ft beyond top and bottom riser (if no safety hazard permits)			N/A
Handgrip oval or round			N/A
Handgrip has a smooth surface			N/A
Handgrip diameter between 1 1/4" and 1 1/2"			N/A
1 1/2" clearance between wall and handrail			N/A
Doors			
<i>Specification</i>			
Minimum 32" clear opening			
At least 18" clear floor space on pull side of door			
Closing speed minimum 3 seconds to within 3" of the latch			
Maximum pressure 5 pounds interior doors			
Threshold maximum 1/2" high, beveled on both sides			
Hardware operable with a closed fist (no conventional door knobs or thumb latch devices)			

OPEN SPACE RECREATION PLAN
BUILDING INVENTORIES

DISTRICT: 4
LOCATION: HARRY SHERRY FIELD
(S. WORCESTER) CAMBRIDGE ST
BUILDING: PG, RR, CONCESSIONS



	Yes	No	Comments
Hardware minimum 36", maximum 48" above the floor			
Clear, level floor space extends out 5ft from both sides of the door			
Door adjacent to revolving door is accessible and unlocked			N/A
Doors opening into hazardous area have hardware that is knurled or roughened			N/A

Restrooms			
<i>Specification</i>			
5ft turn space measured 12" from the floor			
At least one sink:			
Clear floor space 30" by 48" to allow a forward approach			
Mounted without pedestal or legs, height 34" to top of rim			
Extends at least 22" from the wall			
Open knee space a minimum 19" deep, 30" width, and 27" high			
Cover exposed pipes with insulation			
Faucets operable with closed fist (level or spring activated handle)			
At least one stall:			
Accessible to person using wheelchair at 60" wide or 72" inches deep			
Stall door is 36" wide			
Stall door swings out			
Stall door is self closing			
Stall door has a pull latch			
Lock on stall door is operable with a closed fist, and 32" above the floor			
Coat hook is 54" high			
Toilet:			
18" from center to nearest side wall			
42" minimum clear space from center to farthest wall or fixture			
Top of seat 17"-19" above the floor			
Grab Bars			
On back and side wall closest to toilet			
1 1/4" diameter			
1 1/2" clearance to wall			
Located 30" above and parallel to the floor			
Acid-etched or roughened surface			
42" long			
Fixtures			
Toilet paper dispenser is 24" above floor			
One mirror set a maximum 38" to bottom (if tilted 42")			

OPEN SPACE RECREATION PLAN
BUILDING INVENTORIES

DISTRICT: 4
LOCATION: HARRY SHERRY FIELD
(S. WORCESTER) CAMBRIDGE ST
BUILDING: PG, RR, CONCESSIONS



	Yes	No	Comments
Dispenser (towel, soap, etc) at least one of each a maximum 42" above the floor			

Floors, drinking fountains, telephones			
<i>floors:</i>			
Non-slip surface			
carpeting is high-density, low pile, non-absorbent stretched taut, securely anchored			N/A
Corridor width minimum is 3ft			
Objects (signs, ceilings, fixtures) can only protrude 4" into the path of travel from a height of 27" to 80" above the floor			
Drinking fountains			
Spouts no higher than 36" from floor to outlet			N/A
Hand Operated push button or level controls			N/A
Spouts located near from with stream of water as parallel to front as possible			N/A
If recessed, recess a minimum 30" width, and no deeper than depth of fountain			N/A
If no clear knee space underneath, clear floor space 30" x 40" to allow parallel approach			N/A
Telephones			
<i>Specification</i>			
Highest operating part a maximum 54" above the floor			N/A
Access within 12" of phone, 30" high by 30" width			N/A
Adjustable volume control on headset so identified			N/A
Switches, Controls, and Signs			
Switched and controls for light, heat, ventilation, windows, fire alarms, thermostats, etc, must be a minimum of 36" and a maximum of 48" above the floor for a forward reach, a maximum of 54" for a side reach			
Electrical outlets centered no lower than 18" above the floor			
Warnings signals must be visual as well as audible			
Signs, Signals, and Switches			
Mounting height must be 60" to centerline of the sign			
Within 18" of door jamb or recessed			
Letters and numbers at least 1 1/4" high			
Letters and numbers raised .03"			
Letters and numbers contrast with the background color			

OPEN SPACE RECREATION PLAN
BUILDING INVENTORIES

DISTRICT: 4
LOCATION: CROMPTON PARK
CANTON ST
BUILDING: POOL HOUSE

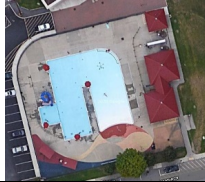


	Yes	No	Comments
Entrances			
Primary public entrances accessible to person using wheelchair, must be signed, gotten to independently, and not be the service entrance.			
Level space extending 5ft from the door, interior and exterior entrance doors			
Minimum 32" clear width opening (i.e. 36" door with standard hinge)			
At least 18" clear floor area on latch, pull side of door			
Door handle no higher than 48" and operable with a closed fist			
Vestibule is 4ft plus the width of the door swinging into the space			
Entrance(s) on a level that makes elevators accessible			
Door mats less than 1/2" thick are securely fastened			
Door mats more than 1/2" thick are recessed			
Grates in path of travel have openings of 1/2" maximum			
Signs at non-accessible entrance(S) indicate direction to accessible entrance			
Emergency egress - alarms with flashing lights and audible signals, sufficiently lighted			

Stairs and Doors			
<i>Specification</i>			
No open risers			N/A
Treads no less than 11" wide			N/A
Handrails on both sides			N/A
Handrails 34"-38" above tread			N/A
Handrail extends a minimum of 1ft beyond top and bottom riser (if no safety hazard permits)			N/A
Handgrip oval or round			N/A
Handgrip has a smooth surface			N/A
Handgrip diameter between 1 1/4" and 1 1/2"			N/A
1 1/2" clearance between wall and handrail			N/A
Doors			
<i>Specification</i>			
Minimum 32" clear opening			
At least 18" clear floor space on pull side of door			
Closing speed minimum 3 seconds to within 3" of the latch			
Maximum pressure 5 pounds interior doors			
Threshold maximum 1/2" high, beveled on both sides			
Hardware operable with a closed fist (no conventional door knobs or thumb latch devices)			

OPEN SPACE RECREATION PLAN
BUILDING INVENTORIES

DISTRICT: 4
LOCATION: CROMPTON PARK
CANTON ST
BUILDING: POOL HOUSE

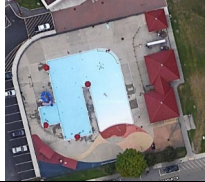


	Yes	No	Comments
Hardware minimum 36", maximum 48" above the floor			
Clear, level floor space extends out 5ft from both sides of the door			
Door adjacent to revolving door is accessible and unlocked			N/A
Doors opening into hazardous area have hardware that is knurled or roughened			N/A

Restrooms			
<i>Specification</i>			
5ft turn space measured 12" from the floor			
At least one sink:			
Clear floor space 30" by 48" to allow a forward approach			
Mounted without pedestal or legs, height 34" to top of rim			
Extends at least 22" from the wall			
Open knee space a minimum 19" deep, 30" width, and 27" high			
Cover exposed pipes with insulation			
Faucets operable with closed fist (level or spring activated handle)			
At least one stall:			
Accessible to person using wheelchair at 60" wide or 72" inches deep			
Stall door is 36" wide			
Stall door swings out			
Stall door is self closing			
Stall door has a pull latch			
Lock on stall door is operable with a closed fist, and 32" above the floor			
Coat hook is 54" high			
Toilet:			
18" from center to nearest side wall			
42" minimum clear space from center to farthest wall or fixture			
Top of seat 17"-19" above the floor			2'10" urinal
Grab Bars			
On back and side wall closest to toilet			
1 1/4" diameter			
1 1/2" clearance to wall			
Located 30" above and parallel to the floor			
Acid-etched or roughened surface			
42" long			
Fixtures			
Toilet paper dispenser is 24" above floor			
One mirror set a maximum 38" to bottom (if tilted 42")			

OPEN SPACE RECREATION PLAN
BUILDING INVENTORIES

DISTRICT: 4
LOCATION: CROMPTON PARK
CANTON ST
BUILDING: POOL HOUSE



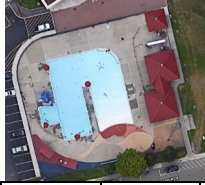
	Yes	No	Comments
Dispenser (towel, soap, etc) at least one of each a maximum 42" above the floor			

Floors, drinking fountains, telephones			
floors:			
Non-slip surface			
carpeting is high-density, low pile, non-absorbent stretched taut, securely anchored			N/A
Corridor width minimum is 3ft			N/A
Objects (signs, ceilings, fixtures) can only protrude 4" into the path of travel from a height of 27" to 80" above the floor			
Drinking fountains			
Spouts no higher than 36" from floor to outlet			N/A
Hand Operated push button or level controls			N/A
Spouts located near from with stream of water as parallel to front as possible			N/A
If recessed, recess a minimum 30" width, and no deeper than depth of fountain			N/A
If no clear knee space underneath, clear floor space 30" x 40" to allow parallel approach			N/A
Telephones			
Specification			
Highest operating part a maximum 54" above the floor			N/A
Access within 12" of phone, 30" high by 30" width			N/A
Adjustable volume control on headset so identified			N/A
Switches, Controls, and Signs			
Switched and controls for light, heat, ventilation, windows, fire alarms, thermostats, etc, must be a minimum of 36" and a maximum of 48" above the floor for a forward reach, a maximum of 54" for a side reach			
Electrical outlets centered no lower than 18" above the floor			
Warnings signals must be visual as well as audible			
Signs, Signals, and Switches			
Mounting height must be 60" to centerline of the sign			
Within 18" of door jamb or recessed			
Letters and numbers at least 1 1/4" high			
Letters and numbers raised .03"			
Letters and numbers contrast with the background color			

Swimming pools - accessibility can be via ramp, lifting device, or transfer area

OPEN SPACE RECREATION PLAN
BUILDING INVENTORIES

DISTRICT: 4
LOCATION: CROMPTON PARK
CANTON ST
BUILDING: POOL HOUSE

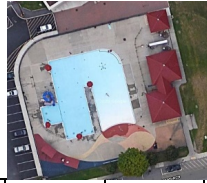


	Yes	No	Comments
Ramp at least 34" wide with a non-slip surface extending into the shallow end, slope not exceeding 1:6 with handrails on both sides			
lifting device			
Transfer area 18" above the path of travel and a minimum of 18" wide			
Unobstructed path of travel not less than 48" wide around pool			
Non-slip surface			

Showers rooms - showers must accommodate both wheel-in and transfer use			
Stalls 36" by 60" minimum, with 36" door opening			
Floors are pitched to drain the stall at the corner farthest from entrance			
Floors are non-slip surface			
Controls operate by a single lever with a pressure balance mixing valve			
Controls are located on the center wall adjacent to the hinged seat			
Shower head attached to a flexible metal hose			
Shower heads attached to wall mounting adjustable from 42" to 72" above the floor			
Seat is hinged and padded and at least 16" deep, folds upward, securely attached to side wall, height is 18" to top of the seat, and at least 24" long			
Soap trays without handhold features unless they can support 250 pounds			
2 grab bars are provided, one 30" and one 48" long or one continuous L shaped bar			
Grab bars are placed horizontally at 36" above the floor line			

OPEN SPACE RECREATION PLAN
BUILDING INVENTORIES

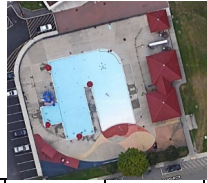
DISTRICT: 4
LOCATION: CROMPTON PARK
CANTON ST
BUILDING: RESTROOMS



	Yes	No	Comments
Entrances			
Primary public entrances accessible to person using wheelchair, must be signed, gotten to independently, and not be the service entrance.			
Level space extending 5ft from the door, interior and exterior entrance doors			
Minimum 32" clear width opening (i.e. 36" door with standard hinge)			
At least 18" clear floor area on latch, pull side of door			
Door handle no higher than 48" and operable with a closed fist			
Vestibule is 4ft plus the width of the door swinging into the space			
Entrance(s) on a level that makes elevators accessible			N/A
Door mats less than 1/2" thick are securely fastened			N/A
Door mats more than 1/2" thick are recessed			N/A
Grates in path of travel have openings of 1/2" maximum			N/A
Signs at non-accessible entrance(S) indicate direction to accessible entrance			N/A
Emergency egress - alarms with flashing lights and audible signals, sufficiently lighted			
Stairs and Doors			
<i>Specification</i>			
No open risers			N/A
Treads no less than 11" wide			N/A
Handrails on both sides			N/A
Handrails 34"-38" above tread			N/A
Handrail extends a minimum of 1ft beyond top and bottom riser (if no safety hazard permits)			N/A
Handgrip oval or round			N/A
Handgrip has a smooth surface			N/A
Handgrip diameter between 1 1/4" and 1 1/2"			N/A
1 1/2" clearance between wall and handrail			N/A
Doors			
<i>Specification</i>			
Minimum 32" clear opening			
At least 18" clear floor space on pull side of door			
Closing speed minimum 3 seconds to within 3" of the latch			
Maximum pressure 5 pounds interior doors			
Threshold maximum 1/2" high, beveled on both sides			
Hardware operable with a closed fist (no conventional door knobs or thumb latch devices)			
Hardware minimum 36", maximum 48" above the floor			

OPEN SPACE RECREATION PLAN
BUILDING INVENTORIES

DISTRICT: 4
LOCATION: CROMPTON PARK
CANTON ST
BUILDING: RESTROOMS

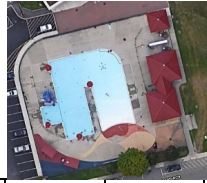


	Yes	No	Comments
Clear, level floor space extends out 5ft from both sides of the door			
Door adjacent to revolving door is accessible and unlocked			N/A
Doors opening into hazardous area have hardware that is knurled or roughened			N/A

Restrooms			
<i>Specification</i>			
5ft turn space measured 12" from the floor			
At least one sink:			
Clear floor space 30" by 48" to allow a forward approach			
Mounted without pedestal or legs, height 34" to top of rim			
Extends at least 22" from the wall			
Open knee space a minimum 19" deep, 30" width, and 27" high			
Cover exposed pipes with insulation			
Faucets operable with closed fist (level or spring activated handle)			
At least one stall:			
Accessible to person using wheelchair at 60" wide or 72" inches deep			
Stall door is 36" wide			
Stall door swings out			
Stall door is self closing			
Stall door has a pull latch			
Lock on stall door is operable with a closed fist, and 32" above the floor			
Coat hook is 54" high			
Toilet:			
18" from center to nearest side wall			
42" minimum clear space from center to farthest wall or fixture			
Top of seat 17"-19" above the floor			Residential toilet
Grab Bars			
On back and side wall closest to toilet			
1 1/4" diameter			
1 1/2" clearance to wall			
Located 30" above and parallel to the floor			
Acid-etched or roughened surface			
42" long			
Fixtures			
Toilet paper dispenser is 24" above floor			
One mirror set a maximum 38" to bottom (if tilted 42")			
Dispenser (towel, soap, etc) at least one of each a maximum 42" above the floor			
Floors, drinking fountains, telephones			

OPEN SPACE RECREATION PLAN
BUILDING INVENTORIES

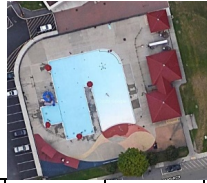
DISTRICT: 4
LOCATION: CROMPTON PARK
CANTON ST
BUILDING: RESTROOMS



	Yes	No	Comments
floors:			
Non-slip surface			
carpeting is high-density, low pile, non-absorbent stretched taut, securely anchored			N/A
Corridor width minimum is 3ft			
Objects (signs, ceilings, fixtures) can only protrude 4" into the path of travel from a height of 27" to 80" above the floor			
Drinking fountains			
Spouts no higher than 36" from floor to outlet			N/A
Hand Operated push button or level controls			N/A
Spouts located near from with stream of water as parallel to front as possible			N/A
If recessed, recess a minimum 30" width, and no deeper than depth of fountain			N/A
If no clear knee space underneath, clear floor space 30" x 40" to allow parallel approach			N/A
Telephones			
<i>Specification</i>			
Highest operating part a maximum 54" above the floor			N/A
Access within 12" of phone, 30" high by 30" width			N/A
Adjustable volume control on headset so identified			N/A
Switches, Controls, and Signs			
Switched and controls for light, heat, ventilation, windows, fire alarms, thermostats, etc, must be a minimum of 36" and a maximum of 48" above the floor for a forward reach, a maximum of 54" for a side reach			
Electrical outlets centered no lower than 18" above the floor			
Warnings signals must be visual as well as audible			
Signs, Signals, and Switches			
Mounting height must be 60" to centerline of the sign			
Within 18" of door jamb or recessed			
Letters and numbers at least 1 1/4" high			
Letters and numbers raised .03"			
Letters and numbers contrast with the background color			
Swimming pools - accessibility can be via ramp, lifting device, or transfer area			
Ramp at least 34" wide with a non-slip surface extending into the shallow end, slope not exceeding 1:6 with handrails on both sides			
lifting device			
Transfer area 18" above the path of travel and a minimum of 18" wide			

OPEN SPACE RECREATION PLAN
BUILDING INVENTORIES

DISTRICT: 4
LOCATION: CROMPTON PARK
CANTON ST
BUILDING: RESTROOMS



	Yes	No	Comments
Unobstructed path of travel not less than 48" wide around pool			
Non-slip surface			

Showers rooms - showers must accommodate both wheel-in and transfer use			
Stalls 36" by 60" minimum, with 36" door opening			
Floors are pitched to drain the stall at the corner farthest from entrance			
Floors are non-slip surface			
Controls operate by a single lever with a pressure balance mixing valve			
Controls are located on the center wall adjacent to the hinged seat			
Shower head attached to a flexible metal hose			
Shower heads attached to wall mounting adjustable from 42" to 72" above the floor			
Seat is hinged and padded and at least 16" deep, folds upward, securely attached to side wall, height is 18" to top of the seat, and at least 24" long			
Soap trays without handhold features unless they can support 250 pounds			
2 grab bars are provided, one 30" and one 48" long or one continuous L shaped bar			
Grab bars are placed horizontally at 36" above the floor line			

OPEN SPACE RECREATION PLAN
BUILDING INVENTORIES

DISTRICT: 4

LOCATION: CROMPTON PARK

BUILDING: GREEN ISLAND NEIGHBORHOOD CENTER



	Yes	No	Comments
Entrances			
Primary public entrances accessible to person using wheelchair, must be signed, gotten to independently, and not be the service entrance.			
Level space extending 5ft from the door, interior and exterior entrance doors			
Minimum 32" clear width opening (i.e. 36" door with standard hinge)			
At least 18" clear floor area on latch, pull side of door			
Door handle no higher than 48" and operable with a closed fist			
Vestibule is 4ft plus the width of the door swinging into the space			
Entrance(s) on a level that makes elevators accessible			N/A
Door mats less than 1/2" thick are securely fastened			N/A
Door mats more than 1/2" thick are recessed			N/A
Grates in path of travel have openings of 1/2" maximum			N/A
Signs at non-accessible entrance(S) indicate direction to accessible entrance			N/A
Emergency egress - alarms with flashing lights and audible signals, sufficiently lighted			

Stairs and Doors			
<i>Specification</i>			
No open risers			N/A
Treads no less than 11" wide			N/A
Handrails on both sides			N/A
Handrails 34"-38" above tread			N/A
Handrail extends a minimum of 1ft beyond top and bottom riser (if no safety hazard permits)			N/A
Handgrip oval or round			N/A
Handgrip has a smooth surface			N/A
Handgrip diameter between 1 1/4" and 1 1/2"			N/A
1 1/2" clearance between wall and handrail			N/A
Doors			
<i>Specification</i>			
Minimum 32" clear opening			
At least 18" clear floor space on pull side of door			
Closing speed minimum 3 seconds to within 3" of the latch			
Maximum pressure 5 pounds interior doors			
Threshold maximum 1/2" high, beveled on both sides			
Hardware operable with a closed first (no conventional door knobs or thumb latch devices)			

OPEN SPACE RECREATION PLAN
BUILDING INVENTORIES

DISTRICT: 4

LOCATION: CROMPTON PARK

BUILDING: GREEN ISLAND NEIGHBORHOOD CENTER



	Yes	No	Comments
Hardware minimum 36", maximum 48" above the floor			
Clear, level floor space extends out 5ft from both sides of the door			
Door adjacent to revolving door is accessible and unlocked			N/A
Doors opening into hazardous area have hardware that is knurled or roughened			N/A

Restrooms			
<i>Specification</i>			
5ft turn space measured 12" from the floor			
At least one sink:			
Clear floor space 30" by 48" to allow a forward approach			
Mounted without pedestal or legs, height 34" to top of rim			
Extends at least 22" from the wall			
Open knee space a minimum 19" deep, 30" width, and 27" high			
Cover exposed pipes with insulation			
Faucets operable with closed fist (level or spring activated handle)			
At least one stall:			
Accessible to person using wheelchair at 60" wide or 72" inches deep			
Stall door is 36" wide			N/A
Stall door swings out			N/A
Stall door is self closing			N/A
Stall door has a pull latch			N/A
Lock on stall door is operable with a closed fist, and 32" above the floor			N/A
Coat hook is 54" high			
Toilet:			
18" from center to nearest side wall			
42" minimum clear space from center to farthest wall or fixture			
Top of seat 17"-19" above the floor			
Grab Bars			
On back and side wall closest to toilet			
1 1/4" diameter			
1 1/2" clearance to wall			
Located 30" above and parallel to the floor			
Acid-etched or roughened surface			
42" long			
Fixtures			
Toilet paper dispenser is 24" above floor			
One mirror set a maximum 38" to bottom (if tilted 42")			

OPEN SPACE RECREATION PLAN
BUILDING INVENTORIES

DISTRICT: 4

LOCATION: CROMPTON PARK

BUILDING: GREEN ISLAND NEIGHBORHOOD CENTER



	Yes	No	Comments
Dispenser (towel, soap, etc) at least one of each a maximum 42" above the floor			

Floors, drinking fountains, telephones			
<i>floors:</i>			
Non-slip surface			
carpeting is high-density, low pile, non-absorbent stretched taut, securely anchored			N/A
Corridor width minimum is 3ft			N/A
Objects (signs, ceilings, fixtures) can only protrude 4" into the path of travel from a height of 27" to 80" above the floor			
Drinking fountains			
Spouts no higher than 36" from floor to outlet			N/A
Hand Operated push button or level controls			N/A
Spouts located near from with stream of water as parallel to front as possible			N/A
If recessed, recess a minimum 30" width, and no deeper than depth of fountain			N/A
If no clear knee space underneath, clear floor space 30" x 40" to allow parallel approach			N/A
Telephones			
<i>Specification</i>			
Highest operating part a maximum 54" above the floor			N/A
Access within 12" of phone, 30" high by 30" width			N/A
Adjustable volume control on headset so identified			N/A
Signs, Signals, and Switches			
Switches, Controls, and Signs			
Switched and controls for light, heat, ventilation, windows, fire alarms, thermostats, etc, must be a minimum of 36" and a maximum of 48" above the floor for a forward reach, a maximum of 54" for a side reach			
Electrical outlets centered no lower than 18" above the floor			
Warnings signals must be visual as well as audible			
Signs, Signals, and Switches			
Mounting height must be 60" to centerline of the sign			
Within 18" of door jamb or recessed			
Letters and numbers at least 1 1/4" high			
Letters and numbers raised .03"			
Letters and numbers contrast with the background color			

OPEN SPACE RECREATION PLAN
BUILDING INVENTORIES

DISTRICT: 4
LOCATION: ELM PARK
NEWTON SQUARE & HIGHLAND ST
BUILDING : RESTROOMS



	Yes	No	Comments
Entrances			
Primary public entrances accessible to person using wheelchair, must be signed, gotten to independently, and not be the service entrance.			
Level space extending 5ft from the door, interior and exterior entrance doors			
Minimum 32" clear width opening (i.e. 36" door with standard hinge)			
At least 18" clear floor area on latch, pull side of door			
Door handle no higher than 48" and operable with a closed fist			
Vestibule is 4ft plus the width of the door swinging into the space			
Entrance(s) on a level that makes elevators accessible			N/A
Door mats less than 1/2" thick are securely fastened			N/A
Door mats more than 1/2" thick are recessed			N/A
Grates in path of travel have openings of 1/2" maximum			N/A
Signs at non-accessible entrance(S) indicate direction to accessible entrance			
Emergency egress - alarms with flashing lights and audible signals, sufficiently lighted			

Stairs and Doors			
No open risers			N/A
Treads no less than 11" wide			N/A
Handrails on both sides			N/A
Handrails 34"-38" above tread			N/A
Handrail extends a minimum of 1ft beyond top and bottom riser (if no safety hazard permits)			N/A
Handgrip oval or round			N/A
Handgrip has a smooth surface			N/A
Handgrip diameter between 1 1/4" and 1 1/2"			N/A
1 1/2" clearance between wall and handrail			N/A
Doors			
<i>Specification</i>			
Minimum 32" clear opening			
At least 18" clear floor space on pull side of door			
Closing speed minimum 3 seconds to within 3" of the latch			
Maximum pressure 5 pounds interior doors			
Threshold maximum 1/2" high, beveled on both sides			
Hardware operable with a closed fist (no conventional door knobs or thumb latch devices)			
Hardware minimum 36", maximum 48" above the floor			

OPEN SPACE RECREATION PLAN
BUILDING INVENTORIES

DISTRICT: 4
LOCATION: ELM PARK
NEWTON SQUARE & HIGHLAND ST
BUILDING : RESTROOMS



	Yes	No	Comments
Clear, level floor space extends out 5ft from both sides of the door			
Door adjacent to revolving door is accessible and unlocked			N/A
Doors opening into hazardous area have hardware that is knurled or roughened			N/A

Restrooms			
5ft turn space measured 12" from the floor			
At least one sink:			
Clear floor space 30" by 48" to allow a forward approach			
Mounted without pedestal or legs, height 34" to top of rim			
Extends at least 22" from the wall			
Open knee space a minimum 19" deep, 30" width, and 27" high			
Cover exposed pipes with insulation			
Faucets operable with closed fist (level or spring activated handle)			
At least one stall:			
Accessible to person using wheelchair at 60" wide or 72" inches deep			
Stall door is 36" wide			
Stall door swings out			
Stall door is self closing			
Stall door has a pull latch			
Lock on stall door is operable with a closed fist, and 32" above the floor			
Coat hook is 54" high			
Toilet:			
18" from center to nearest side wall			
42" minimum clear space from center to farthest wall or fixture			
Top of seat 17"-19" above the floor			
Grab Bars			
On back and side wall closest to toilet			
1 1/4" diameter			
1 1/2" clearance to wall			
Located 30" above and parallel to the floor			
Acid-etched or roughened surface			
42" long			
Fixtures			
Toilet paper dispenser is 24" above floor			
One mirror set a maximum 38" to bottom (if tilted 42")			
Dispenser (towel, soap, etc) at least one of each a maximum 42" above the floor			Must reach over deep counter
			Urinal 1'3" from floor

OPEN SPACE RECREATION PLAN
BUILDING INVENTORIES

DISTRICT: 4
LOCATION: ELM PARK
NEWTON SQUARE & HIGHLAND ST
BUILDING : RESTROOMS

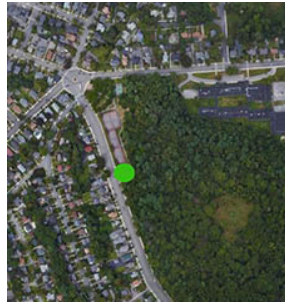


	Yes	No	Comments
Floors, drinking fountains, telephones			
Non-slip surface			
carpeting is high-density, low pile, non-absorbent stretched taut, securely anchored			N/A
Corridor width minimum is 3ft			
Objects (signs, ceilings, fixtures) can only protrude 4" into the path of travel from a height of 27" to 80" above the floor			
Drinking fountains			
Spouts no higher than 36" from floor to outlet			Set 6" back from counter edge
Hand Operated push button or level controls			
Spouts located near from with stream of water as parallel to front as possible			
If recessed, recess a minimum 30" width, and no deeper than depth of fountain			N/A
If no clear knee space underneath, clear floor space 30" x 40" to allow parallel approach			N/A
Telephones			
Highest operating part a maximum 54" above the floor			N/A
Access within 12" of phone, 30" high by 30" width			N/A
Adjustable volume control on headset so identified			N/A
Switches, Controls, and Signs			
Switched and controls for light, heat, ventilation, windows, fire alarms, thermostats, etc, must be a minimum of 36" and a maximum of 48" above the floor for a forward reach, a maximum of 54" for a side reach			
Electrical outlets centered no lower than 18" above the floor			
Warnings signals must be visual as well as audible			
Signs, Signals, and Switches			
Mounting height must be 60" to centerline of the sign			
Within 18" of door jamb or recessed			
Letters and numbers at least 1 1/4" high			
Letters and numbers raised .03"			
Letters and numbers contrast with the background color			

NOTES;
urinal 1'3" from floor

OPEN SPACE RECREATION PLAN
BUILDING INVENTORIES

DISTRICT:
LOCATION: NEWTON SQUARE
PLEASANT ST
BUILDING: RESTROOMS

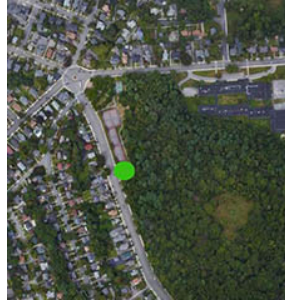


	Yes	No	Comments
Entrances			
Primary public entrances accessible to person using wheelchair, must be signed, gotten to independently, and not be the service entrance.			
Level space extending 5ft from the door, interior and exterior entrance doors			
Minimum 32" clear width opening (i.e. 36" door with standard hinge)			
At least 18" clear floor area on latch, pull side of door			
Door handle no higher than 48" and operable with a closed fist			
Vestibule is 4ft plus the width of the door swinging into the space			
Entrance(s) on a level that makes elevators accessible			N/A
Door mats less than 1/2" thick are securely fastened			N/A
Door mats more than 1/2" thick are recessed			N/A
Grates in path of travel have openings of 1/2" maximum			N/A
Signs at non-accessible entrance(S) indicate direction to accessible entrance			N/A
Emergency egress - alarms with flashing lights and audible signals, sufficiently lighted			

Stairs and Doors			
<i>Specification</i>			
No open risers			N/A
Treads no less than 11" wide			N/A
Handrails on both sides			N/A
Handrails 34"-38" above tread			N/A
Handrail extends a minimum of 1ft beyond top and bottom riser (if no safety hazard permits)			N/A
Handgrip oval or round			N/A
Handgrip has a smooth surface			N/A
Handgrip diameter between 1 1/4" and 1 1/2"			N/A
1 1/2" clearance between wall and handrail			N/A
Doors			
<i>Specification</i>			
Minimum 32" clear opening			
At least 18" clear floor space on pull side of door			
Closing speed minimum 3 seconds to within 3" of the latch			
Maximum pressure 5 pounds interior doors			
Threshold maximum 1/2" high, beveled on both sides			

OPEN SPACE RECREATION PLAN
BUILDING INVENTORIES

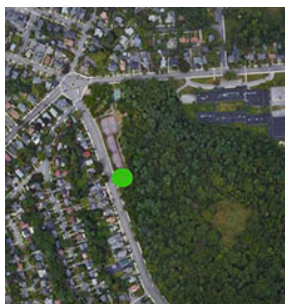
DISTRICT:
LOCATION: NEWTON SQUARE
PLEASANT ST
BUILDING: RESTROOMS



	Yes	No	Comments
Hardware operable with a closed fist (no conventional door knobs or thumb latch devices)			
Hardware minimum 36", maximum 48" above the floor			
Clear, level floor space extends out 5ft from both sides of the door			
Door adjacent to revolving door is accessible and unlocked			N/A
Doors opening into hazardous area have hardware that is knurled or roughened			N/A
Restrooms			
<i>Specification</i>			
5ft turn space measured 12" from the floor			
At least one sink:			
Clear floor space 30" by 48" to allow a forward approach			
Mounted without pedestal or legs, height 34" to top of rim			
Extends at least 22" from the wall			
Open knee space a minimum 19" deep, 30" width, and 27" high			
Cover exposed pipes with insulation			
Faucets operable with closed fist (level or spring activated handle)			
At least one stall:			
Accessible to person using wheelchair at 60" wide or 72" inches deep			
Stall door is 36" wide			
Stall door swings out			
Stall door is self closing			
Stall door has a pull latch			
Lock on stall door is operable with a closed fist, and 32" above the floor			
Coat hook is 54" high			
Toilet:			
18" from center to nearest side wall			
42" minimum clear space from center to farthest wall or fixture			
Top of seat 17"-19" above the floor			
Grab Bars			
On back and side wall closest to toilet			
1 1/4" diameter			
1 1/2" clearance to wall			
Located 30" above and parallel to the floor			
Acid-etched or roughened surface			
42" long			
Fixtures			
Toilet paper dispenser is 24" above floor			

OPEN SPACE RECREATION PLAN
BUILDING INVENTORIES

DISTRICT:
LOCATION: NEWTON SQUARE
PLEASANT ST
BUILDING: RESTROOMS



	Yes	No	Comments
One mirror set a maximum 38" to bottom (if tilted 42")			
Dispenser (towel, soap, etc) at least one of each a maximum 42" above the floor			

Floors, drinking fountains, telephones			
<i>floors:</i>			
Non-slip surface			
carpeting is high-density, low pile, non-absorbent stretched taut, securely anchored			N/A
Corridor width minimum is 3ft			
Objects (signs, ceilings, fixtures) can only protrude 4" into the path of travel from a height of 27" to 80" above the floor			
Drinking fountains			
Spouts no higher than 36" from floor to outlet			N/A
Hand Operated push button or level controls			N/A
Spouts located near from with stream of water as parallel to front as possible			N/A
If recessed, recess a minimum 30" width, and no deeper than depth of fountain			N/A
If no clear knee space underneath, clear floor space 30" x 40" to allow parallel approach			N/A
Telephones			
<i>Specification</i>			
Highest operating part a maximum 54" above the floor			N/A
Access within 12" of phone, 30" high by 30" width			N/A
Adjustable volume control on headset so identified			N/A
Switches, Controls, and Signs			
Switched and controls for light, heat, ventilation, windows, fire alarms, thermostats, etc, must be a minimum of 36" and a maximum of 48" above the floor for a forward reach, a maximum of 54" for a side reach			
Electrical outlets centered no lower than 18" above the floor			
Warnings signals must be visual as well as audible			
Signs, Signals, and Switches			
Mounting height must be 60" to centerline of the sign			
Within 18" of door jamb or recessed			
Letters and numbers at least 1 1/4" high			
Letters and numbers raised .03"			
Letters and numbers contrast with the background color			

OPEN SPACE RECREATION PLAN
BUILDING INVENTORIES

DISTRICT: 5
LOCATION: LOGAN FIELD
MILL ST
BUILDING: RESTROOMS



	Yes	No	Comments
Entrances			
Primary public entrances accessible to person using wheelchair, must be signed, gotten to independently, and not be the service entrance.			
Level space extending 5ft from the door, interior and exterior entrance doors			
Minimum 32" clear width opening (i.e. 36" door with standard hinge)			
At least 18" clear floor area on latch, pull side of door			
Door handle no higher than 48" and operable with a closed fist			
Vestibule is 4ft plus the width of the door swinging into the space			
Entrance(s) on a level that makes elevators accessible			N/A
Door mats less than 1/2" thick are securely fastened			N/A
Door mats more than 1/2" thick are recessed			N/A
Grates in path of travel have openings of 1/2" maximum			N/A
Signs at non-accessible entrance(S) indicate direction to accessible entrance			N/A
Emergency egress - alarms with flashing lights and audible signals, sufficiently lighted			
Stairs and Doors			
<i>Specification</i>			
No open risers			N/A
Treads no less than 11" wide			N/A
Handrails on both sides			N/A
Handrails 34"-38" above tread			N/A
Handrail extends a minimum of 1ft beyond top and bottom riser (if no safety hazard permits)			N/A
Handgrip oval or round			N/A
Handgrip has a smooth surface			N/A
Handgrip diameter between 1 1/4" and 1 1/2"			N/A
1 1/2" clearance between wall and handrail			N/A
Doors			
<i>Specification</i>			
Minimum 32" clear opening			
At least 18" clear floor space on pull side of door			
Closing speed minimum 3 seconds to within 3" of the latch			
Maximum pressure 5 pounds interior doors			
Threshold maximum 1/2" high, beveled on both sides			
Hardware operable with a closed fist (no conventional door knobs or thumb latch devices)			
Hardware minimum 36", maximum 48" above the floor			

OPEN SPACE RECREATION PLAN
BUILDING INVENTORIES

DISTRICT: 5
LOCATION: LOGAN FIELD
MILL ST
BUILDING: RESTROOMS



	Yes	No	Comments
Clear, level floor space extends out 5ft from both sides of the door			Hand dryer and paper towel dispenser measured to be 3'-10" from floor
Door adjacent to revolving door is accessible and unlocked			N/A
Doors opening into hazardous area have hardware that is knurled or roughened			N/A

Restrooms			
<i>Specification</i>			
5ft turn space measured 12" from the floor			
At least one sink:			
Clear floor space 30" by 48" to allow a forward approach			
Mounted without pedestal or legs, height 34" to top of rim			Measured at 2'-7"
Extends at least 22" from the wall			
Open knee space a minimum 19" deep, 30" width, and 27" high			
Cover exposed pipes with insulation			
Faucets operable with closed fist (level or spring activated handle)			
At least one stall:			
Accessible to person using wheelchair at 60" wide or 72" inches deep			
Stall door is 36" wide			N/A
Stall door swings out			N/A
Stall door is self closing			N/A
Stall door has a pull latch			N/A
Lock on stall door is operable with a closed fist, and 32" above the floor			
Coat hook is 54" high			
Toilet:			
18" from center to nearest side wall			
42" minimum clear space from center to farthest wall or fixture			
Top of seat 17"-19" above the floor			
Grab Bars			
On back and side wall closest to toilet			
1 1/4" diameter			
1 1/2" clearance to wall			
Located 30" above and parallel to the floor			Women's room guardrail measured 2'-8"
Acid-etched or roughened surface			
42" long			
Fixtures			
Toilet paper dispenser is 24" above floor			
One mirror set a maximum 38" to bottom (if tilted 42")			no mirrors
Dispenser (towel, soap, etc) at least one of each a maximum 42" above the floor			3'10" height at least
Floors, drinking fountains, telephones			

OPEN SPACE RECREATION PLAN
BUILDING INVENTORIES

DISTRICT: 5
LOCATION: LOGAN FIELD
MILL ST
BUILDING: RESTROOMS



	Yes	No	Comments
floors:			
Non-slip surface			
carpeting is high-density, low pile, non-absorbent stretched taut, securely anchored			N/A
Corridor width minimum is 3ft			N/A
Objects (signs, ceilings, fixtures) can only protrude 4" into the path of travel from a height of 27" to 80" above the floor			
Drinking fountains			
Spouts no higher than 36" from floor to outlet			
Hand Operated push button or level controls			Push button
Spouts located near from with stream of water as parallel to front as possible			
If recessed, recess a minimum 30" width, and no deeper than depth of fountain			N/A
If no clear knee space underneath, clear floor space 30" x 40" to allow parallel approach			N/A
Telephones			
<i>Specification</i>			
Highest operating part a maximum 54" above the floor			N/A
Access within 12" of phone, 30" high by 30" width			N/A
Adjustable volume control on headset so identified			N/A
Switches, Controls, and Signs			
Switched and controls for light, heat, ventilation, windows, fire alarms, thermostats, etc, must be a minimum of 36" and a maximum of 48" above the floor for a forward reach, a maximum of 54" for a side reach			
Electrical outlets centered no lower than 18" above the floor			
Warnings signals must be visual as well as audible			
Signs, Signals, and Switches			
Mounting height must be 60" to centerline of the sign			
Within 18" of door jamb or recessed			
Letters and numbers at least 1 1/4" high			
Letters and numbers raised .03"			
Letters and numbers contrast with the background color			

OPEN SPACE RECREATION PLAN
BUILDING INVENTORIES

DISTRICT: 5
LOCATION: LOGAN FIELD
MILL ST
BUILDING: CONCESSIONS



	Yes	No	Comments
Entrances			
Primary public entrances accessible to person using wheelchair, must be signed, gotten to independently, and not be the service entrance.			
Level space extending 5ft from the door, interior and exterior entrance doors			
Minimum 32" clear width opening (i.e. 36" door with standard hinge)			
At least 18" clear floor area on latch, pull side of door			
Door handle no higher than 48" and operable with a closed fist			
Vestibule is 4ft plus the width of the door swinging into the space			
Entrance(s) on a level that makes elevators accessible			N/A
Door mats less than 1/2" thick are securely fastened			N/A
Door mats more than 1/2" thick are recessed			N/A
Grates in path of travel have openings of 1/2" maximum			N/A
Signs at non-accessible entrance(S) indicate direction to accessible entrance			N/A
Emergency egress - alarms with flashing lights and audible signals, sufficiently lighted			

Stairs and Doors			
<i>Specification</i>			
No open risers			N/A
Treads no less than 11" wide			N/A
Handrails on both sides			N/A
Handrails 34"-38" above tread			N/A
Handrail extends a minimum of 1ft beyond top and bottom riser (if no safety hazard permits)			N/A
Handgrip oval or round			N/A
Handgrip has a smooth surface			N/A
Handgrip diameter between 1 1/4" and 1 1/2"			N/A
1 1/2" clearance between wall and handrail			N/A
Doors			
<i>Specification</i>			
Minimum 32" clear opening			
At least 18" clear floor space on pull side of door			
Closing speed minimum 3 seconds to within 3" of the latch			
Maximum pressure 5 pounds interior doors			
Threshold maximum 1/2" high, beveled on both sides			
Hardware operable with a closed fist (no conventional door knobs or thumb latch devices)			
Hardware minimum 36", maximum 48" above the floor			

OPEN SPACE RECREATION PLAN
BUILDING INVENTORIES

DISTRICT: 5
LOCATION: LOGAN FIELD
MILL ST
BUILDING: CONCESSIONS



	Yes	No	Comments
Clear, level floor space extends out 5ft from both sides of the door			Hand dryer and paper towel dispenser measured to be 3'-10" from floor
Door adjacent to revolving door is accessible and unlocked			N/A
Doors opening into hazardous area have hardware that is knurled or roughened			N/A

Restrooms			
<i>Specification</i>			
5ft turn space measured 12" from the floor			N/A
At least one sink:			
Clear floor space 30" by 48" to allow a forward approach			N/A
Mounted without pedestal or legs, height 34" to top of rim			N/A
Extends at least 22" from the wall			N/A
Open knee space a minimum 19" deep, 30" width, and 27" high			N/A
Cover exposed pipes with insulation			N/A
Faucets operable with closed fist (level or spring activated handle)			N/A
At least one stall:			
Accessible to person using wheelchair at 60" wide or 72" inches deep			N/A
Stall door is 36" wide			N/A
Stall door swings out			N/A
Stall door is self closing			N/A
Stall door has a pull latch			N/A
Lock on stall door is operable with a closed fist, and 32" above the floor			N/A
Coat hook is 54" high			N/A
Toilet:			
18" from center to nearest side wall			
42" minimum clear space from center to farthest wall or fixture			N/A
Top of seat 17"-19" above the floor			N/A
Grab Bars			
On back and side wall closest to toilet			N/A
1 1/4" diameter			N/A
1 1/2" clearance to wall			N/A
Located 30" above and parallel to the floor			N/A
Acid-etched or roughened surface			N/A
42" long			N/A
Fixtures			
Toilet paper dispenser is 24" above floor			
One mirror set a maximum 38" to bottom (if tilted 42")			no mirrors
Dispenser (towel, soap, etc) at least one of each a maximum 42" above the floor			3'10" height at least

Floors, drinking fountains, telephones

OPEN SPACE RECREATION PLAN
BUILDING INVENTORIES

DISTRICT: 5
LOCATION: LOGAN FIELD
MILL ST
BUILDING: CONCESSIONS



	Yes	No	Comments
floors:			
Non-slip surface			
carpeting is high-density, low pile, non-absorbent stretched taut, securely anchored			N/A
Corridor width minimum is 3ft			N/A
Objects (signs, ceilings, fixtures) can only protrude 4" into the path of travel from a height of 27" to 80" above the floor			
Drinking fountains			
Spouts no higher than 36" from floor to outlet			
Hand Operated push button or level controls			Push button
Spouts located near from with stream of water as parallel to front as possible			
If recessed, recess a minimum 30" width, and no deeper than depth of fountain			N/A
If no clear knee space underneath, clear floor space 30" x 40" to allow parallel approach			N/A
Telephones			
<i>Specification</i>			
Highest operating part a maximum 54" above the floor			N/A
Access within 12" of phone, 30" high by 30" width			N/A
Adjustable volume control on headset so identified			N/A
Switches, Controls, and Signs			
Switched and controls for light, heat, ventilation, windows, fire alarms, thermostats, etc, must be a minimum of 36" and a maximum of 48" above the floor for a forward reach, a maximum of 54" for a side reach			
Electrical outlets centered no lower than 18" above the floor			
Warnings signals must be visual as well as audible			
Signs, Signals, and Switches			
Mounting height must be 60" to centerline of the sign			
Within 18" of door jamb or recessed			
Letters and numbers at least 1 1/4" high			
Letters and numbers raised .03"			
Letters and numbers contrast with the background color			

OPEN SPACE RECREATION PLAN
BUILDING INVENTORIES

DISTRICT: 5
LOCATION: COES POND BEACH
MILL ST
BUILDING: RESTROOMS



	Yes	No	Comments
Entrances			
Primary public entrances accessible to person using wheelchair, must be signed, gotten to independently, and not be the service entrance.			
Level space extending 5ft from the door, interior and exterior entrance doors			
Minimum 32" clear width opening (i.e. 36" door with standard hinge)			
At least 18" clear floor area on latch, pull side of door			
Door handle no higher than 48" and operable with a closed fist			
Vestibule is 4ft plus the width of the door swinging into the space			
Entrance(s) on a level that makes elevators accessible			N/A
Door mats less than 1/2" thick are securely fastened			N/A
Door mats more than 1/2" thick are recessed			N/A
Grates in path of travel have openings of 1/2" maximum			N/A
Signs at non-accessible entrance(S) indicate direction to accessible entrance			N/A
Emergency egress - alarms with flashing lights and audible signals, sufficiently lighted			

Stairs and Doors			
<i>Specification</i>			
No open risers			N/A
Treads no less than 11" wide			N/A
Handrails on both sides			N/A
Handrails 34"-38" above tread			N/A
Handrail extends a minimum of 1ft beyond top and bottom riser (if no safety hazard permits)			N/A
Handgrip oval or round			N/A
Handgrip has a smooth surface			N/A
Handgrip diameter between 1 1/4" and 1 1/2"			N/A
1 1/2" clearance between wall and handrail			N/A
Doors			
<i>Specification</i>			
Minimum 32" clear opening			
At least 18" clear floor space on pull side of door			
Closing speed minimum 3 seconds to within 3" of the latch			
Maximum pressure 5 pounds interior doors			
Threshold maximum 1/2" high, beveled on both sides			
Hardware operable with a closed fist (no conventional door knobs or thumb latch devices)			

OPEN SPACE RECREATION PLAN
BUILDING INVENTORIES

DISTRICT: 5
LOCATION: COES POND BEACH
MILL ST
BUILDING: RESTROOMS



	Yes	No	Comments
Hardware minimum 36", maximum 48" above the floor			
Clear, level floor space extends out 5ft from both sides of the door			
Door adjacent to revolving door is accessible and unlocked			N/A
Doors opening into hazardous area have hardware that is knurled or roughened			N/A

Restrooms			
<i>Specification</i>			
5ft turn space measured 12" from the floor			
At least one sink:			
Clear floor space 30" by 48" to allow a forward approach			
Mounted without pedestal or legs, height 34" to top of rim			
Extends at least 22" from the wall			
Open knee space a minimum 19" deep, 30" width, and 27" high			
Cover exposed pipes with insulation			
Faucets operable with closed fist (level or spring activated handle)			
At least one stall:			
Accessible to person using wheelchair at 60" wide or 72" inches deep			
Stall door is 36" wide			
Stall door swings out			
Stall door is self closing			
Stall door has a pull latch			
Lock on stall door is operable with a closed fist, and 32" above the floor			
Coat hook is 54" high			
Toilet:			
18" from center to nearest side wall			
42" minimum clear space from center to farthest wall or fixture			
Top of seat 17"-19" above the floor			
Grab Bars			
On back and side wall closest to toilet			
1 1/4" diameter			
1 1/2" clearance to wall			
Located 30" above and parallel to the floor			
Acid-etched or roughened surface			
42" long			
Fixtures			
Toilet paper dispenser is 24" above floor			
One mirror set a maximum 38" to bottom (if tilted 42")			

OPEN SPACE RECREATION PLAN
BUILDING INVENTORIES

DISTRICT: 5
LOCATION: COES POND BEACH
MILL ST
BUILDING: RESTROOMS



	Yes	No	Comments
Dispenser (towel, soap, etc) at least one of each a maximum 42" above the floor			

Floors, drinking fountains, telephones			
<i>floors:</i>			
Non-slip surface			
carpeting is high-density, low pile, non-absorbent stretched taut, securely anchored			N/A
Corridor width minimum is 3ft			
Objects (signs, ceilings, fixtures) can only protrude 4" into the path of travel from a height of 27" to 80" above the floor			
Drinking fountains			
Spouts no higher than 36" from floor to outlet			N/A
Hand Operated push button or level controls			N/A
Spouts located near from with stream of water as parallel to front as possible			N/A
If recessed, recess a minimum 30" width, and no deeper than depth of fountain			N/A
If no clear knee space underneath, clear floor space 30" x 40" to allow parallel approach			N/A
Telephones			
<i>Specification</i>			
Highest operating part a maximum 54" above the floor			N/A
Access within 12" of phone, 30" high by 30" width			N/A
Adjustable volume control on headset so identified			N/A
Switches, Controls, and Signs			
Switched and controls for light, heat, ventilation, windows, fire alarms, thermostats, etc, must be a minimum of 36" and a maximum of 48" above the floor for a forward reach, a maximum of 54" for a side reach			
Electrical outlets centered no lower than 18" above the floor			
Warnings signals must be visual as well as audible			
Signs, Signals, and Switches			
Mounting height must be 60" to centerline of the sign			
Within 18" of door jamb or recessed			
Letters and numbers at least 1 1/4" high			
Letters and numbers raised .03"			
Letters and numbers contrast with the background color			

OPEN SPACE RECREATION PLAN
BUILDING INVENTORIES

DISTRICT: 5
LOCATION: COES PARK
MILL ST
BUILDING: STERN TAVERN



	Yes	No	Comments
Entrances			
Primary public entrances accessible to person using wheelchair, must be signed, gotten to independently, and not be the service entrance.			
Level space extending 5ft from the door, interior and exterior entrance doors			
Minimum 32" clear width opening (i.e. 36" door with standard hinge)			
At least 18" clear floor area on latch, pull side of door			
Door handle no higher than 48" and operable with a closed fist			
Vestibule is 4ft plus the width of the door swinging into the space			
Entrance(s) on a level that makes elevators accessible			N/A
Door mats less than 1/2" thick are securely fastened			N/A
Door mats more than 1/2" thick are recessed			N/A
Grates in path of travel have openings of 1/2" maximum			N/A
Signs at non-accessible entrance(S) indicate direction to accessible entrance			N/A
Emergency egress - alarms with flashing lights and audible signals, sufficiently lighted			

Stairs and Doors			
<i>Specification</i>			
No open risers			N/A
Treads no less than 11" wide			N/A
Handrails on both sides			N/A
Handrails 34"-38" above tread			N/A
Handrail extends a minimum of 1ft beyond top and bottom riser (if no safety hazard permits)			N/A
Handgrip oval or round			N/A
Handgrip has a smooth surface			N/A
Handgrip diameter between 1 1/4" and 1 1/2"			N/A
1 1/2" clearance between wall and handrail			N/A
Doors			
<i>Specification</i>			
Minimum 32" clear opening			
At least 18" clear floor space on pull side of door			
Closing speed minimum 3 seconds to within 3" of the latch			
Maximum pressure 5 pounds interior doors			
Threshold maximum 1/2" high, beveled on both sides			

OPEN SPACE RECREATION PLAN
BUILDING INVENTORIES

DISTRICT: 5
LOCATION: COES PARK
MILL ST
BUILDING: STERN TAVERN



	Yes	No	Comments
Hardware operable with a closed fist (no conventional door knobs or thumb latch devices)			
Hardware minimum 36", maximum 48" above the floor			
Clear, level floor space extends out 5ft from both sides of the door			
Door adjacent to revolving door is accessible and unlocked			N/A
Doors opening into hazardous area have hardware that is knurled or roughened			N/A

Restrooms			
<i>Specification</i>			
5ft turn space measured 12" from the floor			
At least one sink:			
Clear floor space 30" by 48" to allow a forward approach			
Mounted without pedestal or legs, height 34" to top of rim			residential sink
Extends at least 22" from the wall			
Open knee space a minimum 19" deep, 30" width, and 27" high			
Cover exposed pipes with insulation			
Faucets operable with closed fist (level or spring activated handle)			
At least one stall:			
Accessible to person using wheelchair at 60" wide or 72" inches deep			6'10" x 4'4"
Stall door is 36" wide			
Stall door swings out			
Stall door is self closing			
Stall door has a pull latch			
Lock on stall door is operable with a closed fist, and 32" above the floor			
Coat hook is 54" high			
Toilet:			
18" from center to nearest side wall			
42" minimum clear space from center to farthest wall or fixture			
Top of seat 17"-19" above the floor			residential toilet
Grab Bars			
On back and side wall closest to toilet			
1 1/4" diameter			
1 1/2" clearance to wall			
Located 30" above and parallel to the floor			
Acid-etched or roughened surface			
42" long			
Fixtures			

OPEN SPACE RECREATION PLAN
BUILDING INVENTORIES

DISTRICT: 5
LOCATION: COES PARK
MILL ST
BUILDING: STERN TAVERN



	Yes	No	Comments
Toilet paper dispenser is 24" above floor			
One mirror set a maximum 38" to bottom (if tilted 42")			
Dispenser (towel, soap, etc) at least one of each a maximum 42" above the floor			

Floors, drinking fountains, telephones			
<i>floors:</i>			
Non-slip surface			
carpeting is high-density, low pile, non-absorbent stretched taut, securely anchored			
Corridor width minimum is 3ft			
Objects (signs, ceilings, fixtures) can only protrude 4" into the path of travel from a height of 27" to 80" above the floor			
Drinking fountains			
Spouts no higher than 36" from floor to outlet			N/A
Hand Operated push button or level controls			N/A
Spouts located near from with stream of water as parallel to front as possible			N/A
If recessed, recess a minimum 30" width, and no deeper than depth of fountain			N/A
If no clear knee space underneath, clear floor space 30" x 40" to allow parallel approach			N/A
Telephones			
<i>Specification</i>			
Highest operating part a maximum 54" above the floor			N/A
Access within 12" of phone, 30" high by 30" width			N/A
Adjustable volume control on headset so identified			N/A
Switches, Controls, and Signs			
Switched and controls for light, heat, ventilation, windows, fire alarms, thermostats, etc, must be a minimum of 36" and a maximum of 48" above the floor for a forward reach, a maximum of 54" for a side reach			
Electrical outlets centered no lower than 18" above the floor			
Warnings signals must be visual as well as audible			
Signs, Signals, and Switches			
Mounting height must be 60" to centerline of the sign			
Within 18" of door jamb or recessed			
Letters and numbers at least 1 1/4" high			
Letters and numbers raised .03"			
Letters and numbers contrast with the background color			

OPEN SPACE RECREATION PLAN
BUILDING INVENTORIES

DISTRICT: 5
LOCATION: HADWEN PARK
HEARD ST
BUILDING: RESTROOMS



	Yes	No	Comments
Entrances			
Primary public entrances accessible to person using wheelchair, must be signed, gotten to independently, and not be the service entrance.			
Level space extending 5ft from the door, interior and exterior entrance doors			
Minimum 32" clear width opening (i.e. 36" door with standard hinge)			
At least 18" clear floor area on latch, pull side of door			
Door handle no higher than 48" and operable with a closed fist			
Vestibule is 4ft plus the width of the door swinging into the space			
Entrance(s) on a level that makes elevators accessible			N/A
Door mats less than 1/2" thick are securely fastened			N/A
Door mats more than 1/2" thick are recessed			N/A
Grates in path of travel have openings of 1/2" maximum			N/A
Signs at non-accessible entrance(S) indicate direction to accessible entrance			N/A
Emergency egress - alarms with flashing lights and audible signals, sufficiently lighted			

Stairs and Doors			
<i>Specification</i>			
No open risers			N/A
Treads no less than 11" wide			N/A
Handrails on both sides			N/A
Handrails 34"-38" above tread			N/A
Handrail extends a minimum of 1ft beyond top and bottom riser (if no safety hazard permits)			N/A
Handgrip oval or round			N/A
Handgrip has a smooth surface			N/A
Handgrip diameter between 1 1/4" and 1 1/2"			N/A
1 1/2" clearance between wall and handrail			N/A
Doors			
<i>Specification</i>			
Minimum 32" clear opening			
At least 18" clear floor space on pull side of door			
Closing speed minimum 3 seconds to within 3" of the latch			

OPEN SPACE RECREATION PLAN
BUILDING INVENTORIES

DISTRICT: 5
LOCATION: HADWEN PARK
HEARD ST
BUILDING: RESTROOMS

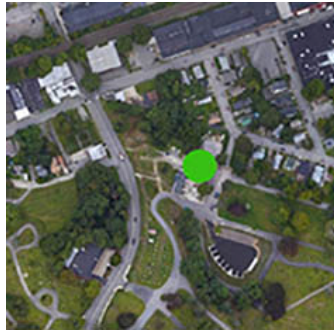


	Yes	No	Comments
Maximum pressure 5 pounds interior doors			
Threshold maximum 1/2" high, beveled on both sides			
Hardware operable with a closed fist (no conventional door knobs or thumb latch devices)			
Hardware minimum 36", maximum 48" above the floor			
Clear, level floor space extends out 5ft from both sides of the door			
Door adjacent to revolving door is accessible and unlocked			N/A
Doors opening into hazardous area have hardware that is knurled or roughened			N/A

Restrooms			
<i>Specification</i>			
5ft turn space measured 12" from the floor			
At least one sink:			
Clear floor space 30" by 48" to allow a forward approach			
Mounted without pedestal or legs, height 34" to top of rim			
Extends at least 22" from the wall			
Open knee space a minimum 19" deep, 30" width, and 27" high			
Cover exposed pipes with insulation			
Faucets operable with closed fist (level or spring activated handle)			
At least one stall:			
Accessible to person using wheelchair at 60" wide or 72" inches deep			
Stall door is 36" wide			N/A
Stall door swings out			N/A
Stall door is self closing			N/A
Stall door has a pull latch			N/A
Lock on stall door is operable with a closed fist, and 32" above the floor			N/A
Coat hook is 54" high			
Toilet:			
18" from center to nearest side wall			
42" minimum clear space from center to farthest wall or fixture			
Top of seat 17"-19" above the floor			

OPEN SPACE RECREATION PLAN
BUILDING INVENTORIES

DISTRICT: 5
LOCATION: HADWEN PARK
HEARD ST
BUILDING: RESTROOMS



	Yes	No	Comments
Grab Bars			
On back and side wall closest to toilet			
1 1/4" diameter			
1 1/2" clearance to wall			
Located 30" above and parallel to the floor			
Acid-etched or roughened surface			
42" long			
Fixtures			
Toilet paper dispenser is 24" above floor			
One mirror set a maximum 38" to bottom (if tilted 42")			
Dispenser (towel, soap, etc) at least one of each a maximum 42" above the floor			

Floors, drinking fountains, telephones			
<i>floors:</i>			
Non-slip surface			
carpeting is high-density, low pile, non-absorbent stretched taut, securely anchored			N/A
Corridor width minimum is 3ft			N/A
Objects (signs, ceilings, fixtures) can only protrude 4" into the path of travel from a height of 27" to 80" above the floor			
Drinking fountains			
Spouts no higher than 36" from floor to outlet			
Hand Operated push button or level controls			N/A
Spouts located near from with stream of water as parallel to front as possible			N/A
If recessed, recess a minimum 30" width, and no deeper than depth of fountain			N/A
If no clear knee space underneath, clear floor space 30" x 40" to allow parallel approach			N/A
Telephones			
<i>Specification</i>			
Highest operating part a maximum 54" above the floor			N/A
Access within 12" of phone, 30" high by 30" width			N/A
Adjustable volume control on headset so identified			N/A
Signs, Signals, and Switches			
Switches, Controls, and Signs			

OPEN SPACE RECREATION PLAN
BUILDING INVENTORIES

DISTRICT: 5
LOCATION: HADWEN PARK
HEARD ST
BUILDING: RESTROOMS



	Yes	No	Comments
Switched and controls for light, heat, ventilation, windows, fire alarms, thermostats, etc, must be a minimum of 36" and a maximum of 48" above the floor for a forward reach, a maximum of 54" for a side reach			
Electrical outlets centered no lower than 18" above the floor			
Warnings signals must be visual as well as audible			
Signs, Signals, and Switches			
Mounting height must be 60" to centerline of the sign			
Within 18" of door jamb or recessed			
Letters and numbers at least 1 1/4" high			
Letters and numbers raised .03"			
Letters and numbers contrast with the background color			

OPEN SPACE RECREATION PLAN
BUILDING INVENTORIES

DISTRICT: 5
LOCATION: TY COBB PARK
JAMES ST
BUILDING: RESTROOMS & COCNESSIONS



	Yes	No	Comments
Entrances			
Primary public entrances accessible to person using wheelchair, must be signed, gotten to independently, and not be the service entrance.			
Level space extending 5ft from the door, interior and exterior entrance doors			
Minimum 32" clear width opening (i.e. 36" door with standard hinge)			
At least 18" clear floor area on latch, pull side of door			
Door handle no higher than 48" and operable with a closed fist			
Vestibule is 4ft plus the width of the door swinging into the space			
Entrance(s) on a level that makes elevators accessible			N/A
Door mats less than 1/2" thick are securely fastened			N/A
Door mats more than 1/2" thick are recessed			N/A
Grates in path of travel have openings of 1/2" maximum			N/A
Signs at non-accessible entrance(S) indicate direction to accessible entrance			N/A
Emergency egress - alarms with flashing lights and audible signals, sufficiently lighted			

Stairs and Doors			
<i>Specification</i>			
No open risers			N/A
Treads no less than 11" wide			N/A
Handrails on both sides			N/A
Handrails 34"-38" above tread			N/A
Handrail extends a minimum of 1ft beyond top and bottom riser (if no safety hazard permits)			N/A
Handgrip oval or round			N/A
Handgrip has a smooth surface			N/A
Handgrip diameter between 1 1/4" and 1 1/2"			N/A
1 1/2" clearance between wall and handrail			N/A
Doors			
<i>Specification</i>			
Minimum 32" clear opening			
At least 18" clear floor space on pull side of door			
Closing speed minimum 3 seconds to within 3" of the latch			
Maximum pressure 5 pounds interior doors			
Threshold maximum 1/2" high, beveled on both sides			
Hardware operable with a closed first (no conventional door knobs or thumb latch devices)			
Hardware minimum 36", maximum 48" above the floor			

OPEN SPACE RECREATION PLAN
BUILDING INVENTORIES

DISTRICT: 5
LOCATION: TY COBB PARK
JAMES ST
BUILDING: RESTROOMS & COCNESSIONS



	Yes	No	Comments
Clear, level floor space extends out 5ft from both sides of the door			
Door adjacent to revolving door is accessible and unlocked			N/A
Doors opening into hazardous area have hardware that is knurled or roughened			N/A

Restrooms			
<i>Specification</i>			
5ft turn space measured 12" from the floor			
At least one sink:			
Clear floor space 30" by 48" to allow a forward approach			
Mounted without pedestal or legs, height 34" to top of rim			
Extends at least 22" from the wall			
Open knee space a minimum 19" deep, 30" width, and 27" high			
Cover exposed pipes with insulation			
Faucets operable with closed fist (level or spring activated handle)			
At least one stall:			
Accessible to person using wheelchair at 60" wide or 72" inches deep			
Stall door is 36" wide			
Stall door swings out			
Stall door is self closing			
Stall door has a pull latch			
Lock on stall door is operable with a closed fist, and 32" above the floor			
Coat hook is 54" high			
Toilet:			
18" from center to nearest side wall			
42" minimum clear space from center to farthest wall or fixture			
Top of seat 17"-19" above the floor			
Grab Bars			
On back and side wall closest to toilet			
1 1/4" diameter			
1 1/2" clearance to wall			
Located 30" above and parallel to the floor			
Acid-etched or roughened surface			
42" long			
Fixtures			
Toilet paper dispenser is 24" above floor			
One mirror set a maximum 38" to bottom (if tilted 42")			
Dispenser (towel, soap, etc) at least one of each a maximum 42" above the floor			

Floors, drinking fountains, telephones

OPEN SPACE RECREATION PLAN
BUILDING INVENTORIES

DISTRICT: 5
LOCATION: TY COBB PARK
JAMES ST
BUILDING: RESTROOMS & COCNESSIONS



	Yes	No	Comments
floors:			
Non-slip surface			
carpeting is high-density, low pile, non-absorbent stretched taut, securely anchored			N/A
Corridor width minimum is 3ft			N/A
Objects (signs, ceilings, fixtures) can only protrude 4" into the path of travel from a height of 27" to 80" above the floor			
Drinking fountains			
Spouts no higher than 36" from floor to outlet			N/A
Hand Operated push button or level controls			N/A
Spouts located near from with stream of water as parallel to front as possible			N/A
If recessed, recess a minimum 30" width, and no deeper than depth of fountain			N/A
If no clear knee space underneath, clear floor space 30" x 40" to allow parallel approach			N/A
Telephones			
<i>Specification</i>			
Highest operating part a maximum 54" above the floor			N/A
Access within 12" of phone, 30" high by 30" width			N/A
Adjustable volume control on headset so identified			N/A
Switches, Controls, and Signs			
Switched and controls for light, heat, ventilation, windows, fire alarms, thermostats, etc, must be a minimum of 36" and a maximum of 48" above the floor for a forward reach, a maximum of 54" for a side reach			
Electrical outlets centered no lower than 18" above the floor			
Warnings signals must be visual as well as audible			
Signs, Signals, and Switches			
Mounting height must be 60" to centerline of the sign			
Within 18" of door jamb or recessed			
Letters and numbers at least 1 1/4" high			
Letters and numbers raised .03"			
Letters and numbers contrast with the background color			

OPEN SPACE RECREATION PLAN
BUILDING INVENTORIES

DISTRICT: 5
LOCATION: BEAVER BROOK PARK
MANN ST
BUILDING: RESTROOMS



	Yes	No	Comments
Entrances			
Primary public entrances accessible to person using wheelchair, must be signed, gotten to independently, and not be the service entrance.			
Level space extending 5ft from the door, interior and exterior entrance doors			
Minimum 32" clear width opening (i.e. 36" door with standard hinge)			
At least 18" clear floor area on latch, pull side of door			
Door handle no higher than 48" and operable with a closed fist			
Vestibule is 4ft plus the width of the door swinging into the space			
Entrance(s) on a level that makes elevators accessible			N/A
Door mats less than 1/2" thick are securely fastened			N/A
Door mats more than 1/2" thick are recessed			N/A
Grates in path of travel have openings of 1/2" maximum			N/A
Signs at non-accessible entrance(S) indicate direction to accessible entrance			N/A
Emergency egress - alarms with flashing lights and audible signals, sufficiently lighted			

Stairs and Doors			
<i>Specification</i>			
No open risers			N/A
Treads no less than 11" wide			N/A
Handrails on both sides			N/A
Handrails 34"-38" above tread			N/A
Handrail extends a minimum of 1ft beyond top and bottom riser (if no safety hazard permits)			N/A
Handgrip oval or round			N/A
Handgrip has a smooth surface			N/A
Handgrip diameter between 1 1/4" and 1 1/2"			N/A
1 1/2" clearance between wall and handrail			N/A
Doors			
<i>Specification</i>			
Minimum 32" clear opening			
At least 18" clear floor space on pull side of door			
Closing speed minimum 3 seconds to within 3" of the latch			
Maximum pressure 5 pounds interior doors			
Threshold maximum 1/2" high, beveled on both sides			
Hardware operable with a closed fist (no conventional door knobs or thumb latch devices)			

OPEN SPACE RECREATION PLAN
BUILDING INVENTORIES

DISTRICT: 5
LOCATION: BEAVER BROOK PARK
MANN ST
BUILDING: RESTROOMS



	Yes	No	Comments
Hardware minimum 36", maximum 48" above the floor			
Clear, level floor space extends out 5ft from both sides of the door			
Door adjacent to revolving door is accessible and unlocked			N/A
Doors opening into hazardous area have hardware that is knurled or roughened			N/A

Restrooms			
<i>Specification</i>			
5ft turn space measured 12" from the floor			
At least one sink:			
Clear floor space 30" by 48" to allow a forward approach			
Mounted without pedestal or legs, height 34" to top of rim			
Extends at least 22" from the wall			
Open knee space a minimum 19" deep, 30" width, and 27" high			
Cover exposed pipes with insulation			
Faucets operable with closed fist (level or spring activated handle)			
At least one stall:			
Accessible to person using wheelchair at 60" wide or 72" inches deep			
Stall door is 36" wide			N/A
Stall door swings out			N/A
Stall door is self closing			N/A
Stall door has a pull latch			N/A
Lock on stall door is operable with a closed fist, and 32" above the floor			
Coat hook is 54" high			
Toilet:			
18" from center to nearest side wall			
42" minimum clear space from center to farthest wall or fixture			
Top of seat 17"-19" above the floor			
Grab Bars			
On back and side wall closest to toilet			
1 1/4" diameter			
1 1/2" clearance to wall			
Located 30" above and parallel to the floor			
Acid-etched or roughened surface			
42" long			
Fixtures			
Toilet paper dispenser is 24" above floor			
One mirror set a maximum 38" to bottom (if tilted 42")			

OPEN SPACE RECREATION PLAN
BUILDING INVENTORIES

DISTRICT: 5
LOCATION: BEAVER BROOK PARK
MANN ST
BUILDING: RESTROOMS



	Yes	No	Comments
Dispenser (towel, soap, etc) at least one of each a maximum 42" above the floor			

Floors, drinking fountains, telephones			
<i>floors:</i>			
Non-slip surface			
carpeting is high-density, low pile, non-absorbent stretched taut, securely anchored			N/A
Corridor width minimum is 3ft			N/A
Objects (signs, ceilings, fixtures) can only protrude 4" into the path of travel from a height of 27" to 80" above the floor			
Drinking fountains			
Spouts no higher than 36" from floor to outlet			N/A
Hand Operated push button or level controls			N/A
Spouts located near from with stream of water as parallel to front as possible			N/A
If recessed, recess a minimum 30" width, and no deeper than depth of fountain			N/A
If no clear knee space underneath, clear floor space 30" x 40" to allow parallel approach			N/A
Telephones			
<i>Specification</i>			
Highest operating part a maximum 54" above the floor			N/A
Access within 12" of phone, 30" high by 30" width			N/A
Adjustable volume control on headset so identified			N/A
Switches, Controls, and Signs			
Switched and controls for light, heat, ventilation, windows, fire alarms, thermostats, etc, must be a minimum of 36" and a maximum of 48" above the floor for a forward reach, a maximum of 54" for a side reach			
Electrical outlets centered no lower than 18" above the floor			
Warnings signals must be visual as well as audible			
Signs, Signals, and Switches			
Mounting height must be 60" to centerline of the sign			
Within 18" of door jamb or recessed			
Letters and numbers at least 1 1/4" high			
Letters and numbers raised .03"			
Letters and numbers contrast with the background color			

NOTE: Community building built to ADA code

OPEN SPACE RECREATION PLAN
BUILDING INVENTORIES

DISTRICT: 5
LOCATION: FARBER FIELD
MORELAND ST
BUILDING: RESTROOMS



	Yes	No	Comments
Entrances			
Primary public entrances accessible to person using wheelchair, must be signed, gotten to independently, and not be the service entrance.			
Level space extending 5ft from the door, interior and exterior entrance doors			
Minimum 32" clear width opening (i.e. 36" door with standard hinge)			
At least 18" clear floor area on latch, pull side of door			
Door handle no higher than 48" and operable with a closed fist			
Vestibule is 4ft plus the width of the door swinging into the space			
Entrance(s) on a level that makes elevators accessible			N/A
Door mats less than 1/2" thick are securely fastened			N/A
Door mats more than 1/2" thick are recessed			N/A
Grates in path of travel have openings of 1/2" maximum			N/A
Signs at non-accessible entrance(S) indicate direction to accessible entrance			N/A
Emergency egress - alarms with flashing lights and audible signals, sufficiently lighted			

Stairs and Doors			
<i>Specification</i>			
No open risers			N/A
Treads no less than 11" wide			N/A
Handrails on both sides			N/A
Handrails 34"-38" above tread			N/A
Handrail extends a minimum of 1ft beyond top and bottom riser (if no safety hazard permits)			N/A
Handgrip oval or round			N/A
Handgrip has a smooth surface			N/A
Handgrip diameter between 1 1/4" and 1 1/2"			N/A
1 1/2" clearance between wall and handrail			N/A
Doors			
Minimum 32" clear opening			
At least 18" clear floor space on pull side of door			
Closing speed minimum 3 seconds to within 3" of the latch			
Maximum pressure 5 pounds interior doors			
Threshold maximum 1/2" high, beveled on both sides			
Hardware operable with a closed fist (no conventional door knobs or thumb latch devices)			

OPEN SPACE RECREATION PLAN
BUILDING INVENTORIES

DISTRICT: 5
LOCATION: FARBER FIELD
MORELAND ST
BUILDING: RESTROOMS



	Yes	No	Comments
Hardware minimum 36", maximum 48" above the floor			
Clear, level floor space extends out 5ft from both sides of the door			
Door adjacent to revolving door is accessible and unlocked			N/A
Doors opening into hazardous area have hardware that is knurled or roughened			N/A

Restrooms			
5ft turn space measured 12" from the floor			
At least one sink:			
Clear floor space 30" by 48" to allow a forward approach			
Mounted without pedestal or legs, height 34" to top of rim			
Extends at least 22" from the wall			
Open knee space a minimum 19" deep, 30" width, and 27" high			
Cover exposed pipes with insulation			
Faucets operable with closed fist (level or spring activated handle)			
At least one stall:			
Accessible to person using wheelchair at 60" wide or 72" inches deep			
Stall door is 36" wide			N/A
Stall door swings out			N/A
Stall door is self closing			N/A
Stall door has a pull latch			N/A
Lock on stall door is operable with a closed fist, and 32" above the floor			
Coat hook is 54" high			
Toilet:			
18" from center to nearest side wall			
42" minimum clear space from center to farthest wall or fixture			
Top of seat 17"-19" above the floor			
Grab Bars			
On back and side wall closest to toilet			
1 1/4" diameter			
1 1/2" clearance to wall			
Located 30" above and parallel to the floor			
Acid-etched or roughened surface			
42" long			
Fixtures			
Toilet paper dispenser is 24" above floor			
One mirror set a maximum 38" to bottom (if tilted 42")			

OPEN SPACE RECREATION PLAN
BUILDING INVENTORIES

DISTRICT: 5
LOCATION: FARBER FIELD
MORELAND ST
BUILDING: RESTROOMS



	Yes	No	Comments
Dispenser (towel, soap, etc) at least one of each a maximum 42" above the floor			

Floors, drinking fountains, telephones			
<i>floors:</i>			
Non-slip surface			
carpeting is high-density, low pile, non-absorbent stretched taut, securely anchored			
Corridor width minimum is 3ft			
Objects (signs, ceilings, fixtures) can only protrude 4" into the path of travel from a height of 27" to 80" above the floor			
Drinking fountains			
Spouts no higher than 36" from floor to outlet			
Hand Operated push button or level controls			
Spouts located near from with stream of water as parallel to front as possible			
If recessed, recess a minimum 30" width, and no deeper than depth of fountain			
If no clear knee space underneath, clear floor space 30" x 40" to allow parallel approach			
Telephones			
Highest operating part a maximum 54" above the floor			N/A
Access within 12" of phone, 30" high by 30" width			N/A
Adjustable volume control on headset so identified			N/A
Signs, Signals, and Switches			
Switches, Controls, and Signs			
Switched and controls for light, heat, ventilation, windows, fire alarms, thermostats, etc, must be a minimum of 36" and a maximum of 48" above the floor for a forward reach, a maximum of 54" for a side reach			
Electrical outlets centered no lower than 18" above the floor			
Warnings signals must be visual as well as audible			
Signs, Signals, and Switches			
Mounting height must be 60" to centerline of the sign			
Within 18" of door jamb or recessed			
Letters and numbers at least 1 1/4" high			
Letters and numbers raised .03"			
Letters and numbers contrast with the background color			

OPEN SPACE RECREATION PLAN
BUILDING INVENTORIES

DISTRICT: 5
LOCATION: ROCKWOOD FIELD
CHANDLER ST



	Yes	No	Comments
Entrances			
Primary public entrances accessible to person using wheelchair, must be signed, gotten to independently, and not be the service entrance.			
Level space extending 5ft from the door, interior and exterior entrance doors			
Minimum 32" clear width opening (i.e. 36" door with standard hinge)			
At least 18" clear floor area on latch, pull side of door			
Door handle no higher than 48" and operable with a closed fist			
Vestibule is 4ft plus the width of the door swinging into the space			
Entrance(s) on a level that makes elevators accessible			N/A
Door mats less than 1/2" thick are securely fastened			N/A
Door mats more than 1/2" thick are recessed			N/A
Grates in path of travel have openings of 1/2" maximum			N/A
Signs at non-accessible entrance(S) indicate direction to accessible entrance			N/A
Emergency egress - alarms with flashing lights and audible signals, sufficiently lighted			

Stairs and Doors			
No open risers			
Treads no less than 11" wide			N/A
Handrails on both sides			N/A
Handrails 34"-38" above tread			N/A
Handrail extends a minimum of 1ft beyond top and bottom riser (if no safety hazard permits)			N/A
Handgrip oval or round			N/A
Handgrip has a smooth surface			N/A
Handgrip diameter between 1 1/4" and 1 1/2"			N/A
1 1/2" clearance between wall and handrail			N/A
Doors			
<i>Specification</i>			
Minimum 32" clear opening			
At least 18" clear floor space on pull side of door			
Closing speed minimum 3 seconds to within 3" of the latch			
Maximum pressure 5 pounds interior doors			
Threshold maximum 1/2" high, beveled on both sides			
Hardware operable with a closed fist (no conventional door knobs or thumb latch devices)			
Hardware minimum 36", maximum 48" above the floor			

OPEN SPACE RECREATION PLAN
BUILDING INVENTORIES

DISTRICT: 5
LOCATION: ROCKWOOD FIELD
CHANDLER ST



	Yes	No	Comments
Clear, level floor space extends out 5ft from both sides of the door			
Door adjacent to revolving door is accessible and unlocked			N/A
Doors opening into hazardous area have hardware that is knurled or roughened			N/A

Restrooms			
5ft turn space measured 12" from the floor			
At least one sink:			
Clear floor space 30" by 48" to allow a forward approach			
Mounted without pedestal or legs, height 34" to top of rim			
Extends at least 22" from the wall			
Open knee space a minimum 19" deep, 30" width, and 27" high			
Cover exposed pipes with insulation			
Faucets operable with closed fist (level or spring activated handle)			
At least one stall:			
Accessible to person using wheelchair at 60" wide or 72" inches deep			N/A
Stall door is 36" wide			N/A
Stall door swings out			N/A
Stall door is self closing			N/A
Stall door has a pull latch			N/A
Lock on stall door is operable with a closed fist, and 32" above the floor			
Coat hook is 54" high			
Toilet:			
18" from center to nearest side wall			
42" minimum clear space from center to farthest wall or fixture			
Top of seat 17"-19" above the floor			
Grab Bars			
On back and side wall closest to toilet			
1 1/4" diameter			
1 1/2" clearance to wall			
Located 30" above and parallel to the floor			
Acid-etched or roughened surface			
42" long			
Fixtures			
Toilet paper dispenser is 24" above floor			
One mirror set a maximum 38" to bottom (if tilted 42")			
Dispenser (towel, soap, etc) at least one of each a maximum 42" above the floor			
Floors, drinking fountains, telephones			

OPEN SPACE RECREATION PLAN
BUILDING INVENTORIES

DISTRICT: 5
LOCATION: ROCKWOOD FIELD
CHANDLER ST



	Yes	No	Comments
floors:			
Non-slip surface			
carpeting is high-density, low pile, non-absorbent stretched taut, securely anchored			N/A
Corridor width minimum is 3ft			N/A
Objects (signs, ceilings, fixtures) can only protrude 4" into the path of travel from a height of 27" to 80" above the floor			
Drinking fountains			
Spouts no higher than 36" from floor to outlet			N/A
Hand Operated push button or level controls			N/A
Spouts located near from with stream of water as parallel to front as possible			N/A
If recessed, recess a minimum 30" width, and no deeper than depth of fountain			N/A
If no clear knee space underneath, clear floor space 30" x 40" to allow parallel approach			N/A
Telephones			
Specification			
Highest operating part a maximum 54" above the floor			N/A
Access within 12" of phone, 30" high by 30" width			N/A
Adjustable volume control on headset so identified			N/A
Signs, Signals, and Switches			
Switches, Controls, and Signs			
Switched and controls for light, heat, ventilation, windows, fire alarms, thermostats, etc, must be a minimum of 36" and a maximum of 48" above the floor for a forward reach, a maximum of 54" for a side reach			
Electrical outlets centered no lower than 18" above the floor			
Warnings signals must be visual as well as audible			
Signs, Signals, and Switches			
Mounting height must be 60" to centerline of the sign			
Within 18" of door jamb or recessed			
Letters and numbers at least 1 1/4" high			
Letters and numbers raised .03"			
Letters and numbers contrast with the background color			

NOTE: Old caretaker's building, and Historic bathhouse are recommended to be demolished.