

of Campaign and Political



MAYOR'S CIVICS ACADEMY: UNDERSTANDING ELECTIONS APRIL 30, 2025

Elections Overview

**1. How does
someone run for
office in
Worcester?**

**2. Election
Process**

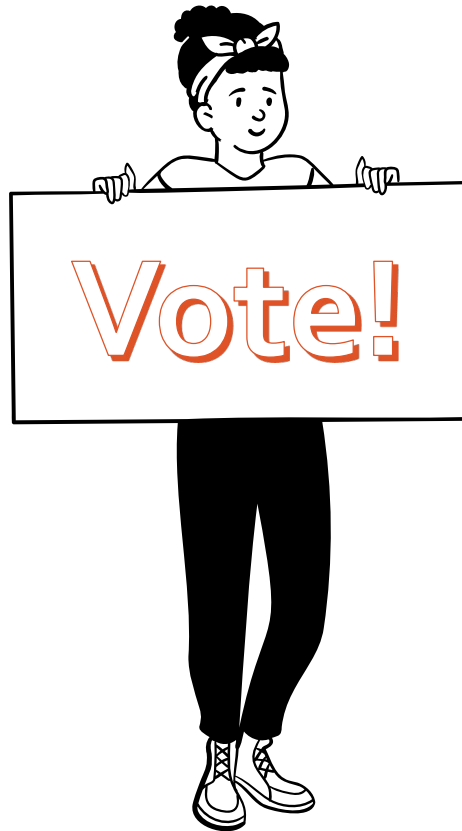
**3. Interpreting
Election Results:
2023**

Background Info

- Elections in Worcester are administered by the City Clerk under the direction of the Board of Election Commissioners
- Odd years: Municipal Elections
 - City Council
 - Mayor
 - At-Large City Council
 - District City Council
 - School Committee
 - At-Large School Committee
 - District School Committee
- Even Years: State Elections
- Approximately 112,100 registered voters



Running for office: A Quick Guide



REVIEW
REQUIREMENTS
FOR RUNNING
FOR LOCAL
OFFICE



REQUEST
NOMINATION
PAPERS FROM
THE BOARD OF
ELECTION
COMMISSIONERS



FILE
APPROPRIATE
CAMPAIGN
FINANCE
PAPERWORK



OBTAIN
SIGNATURES AND
RETURN THEM TO
THE BOARD OF
ELECTION
COMMISSIONERS
FOR
CERTIFICATION
TO QUALIFY FOR
THE BALLOT



CAMPAIGN



Requirements to Hold Local Office

You must be a registered voter in Worcester.

Councilor At-Large: Any voter is eligible to hold the office of councilor at-large; if they shall have resided in the city for a period of at least one year.

District Councilor: A district councilor at the time of their election shall be a voter of the district from which they seek election and shall have resided therein for a period of at least one year.

School Committee At-Large: Any voter is eligible to hold the office of school committee member, provided, however, that they shall have resided within the city for one year immediately prior to the election.

District School Committee: A district school committee member at the time of their election shall be a voter of the district from which they are elected and shall have resided therein for a period of at least one year.

Request nomination papers from the offices of the Board of Election Commissioners, Room 208, City Hall.



Nomination Papers

Signature Requirements:

District Councilor: 100

District School Committee: 100

Councilor At-Large or School Committee At-Large: 300

Signatures on Nomination Papers

Procedures: To be certified, all signatures on nomination papers must be legible and signed in person, with the address at which the voters are registered.

District Boundaries: Signatures that are not in the correct City Council or School Committee District cannot be counted.

Collect Extra Signatures: Candidates are encouraged to collect at least 20% more signatures than required.

IMPORTANT: All nomination papers must be submitted to the ELECTION COMMISSION for the certification of names on or before 5:00 P.M. **MAY 16, 2017**

City of Worcester
CITY PRELIMINARY ELECTION NOMINATION PAPER
STATEMENT OF CANDIDATE

I, _____, on oath declare that I reside at _____, in the City of Worcester, that I am a voter therein qualified to vote for a candidate for the office of CITY COUNCILLOR AT-LARGE for the term of TWO years, to be voted for at the preliminary election to be held on TUESDAY, the 12TH day of SEPTEMBER 2017, and I request that my name be printed as such candidate on the official ballot for use at said preliminary election and I further declare that at the time of the election I shall be a voter of the district from which I am elected and shall have resided therein for a period of at least one year.

(Signed) _____
COMMONWEALTH OF MASSACHUSETTS
Worcester, ss.
Subscribed and sworn to on this _____ day of _____ before me _____
My Commission expires: _____

A statement may be made here to set aside the right words, giving the public officer which he holds or has held, showing thereby that he is a former incumbent thereof if such is the case, and, if he is an elected incumbent of an office for which he seeks re-election, that he is a candidate for such re-election, and, if he is a retiree or retired in service, inserting one of chapter thirty-nine of the General Laws the word "retiree" may be used.

PETITION ACCOMPANYING STATEMENT OF CANDIDATE
(To be signed by at least 300 Voters qualified to vote for said office.)

WHEREAS _____ is a candidate for nomination for the office of CITY COUNCILLOR AT-LARGE for the term of TWO years, we, the undersigned, voters of the City of WORCESTER, duly qualified to vote for a candidate for said office, do hereby request that the name of said _____ as a candidate for nomination for said office be printed on the official ballot to be used at the preliminary election to be held on TUESDAY, SEPTEMBER 12TH, 2017. We further state that we believe him / her to be of good moral character and qualified to perform the duties of the office.

CITY COUNCILLOR AT-LARGE

Campaign Finance

The law requires that campaign expenses and contributions be reported by candidates seeking election at every level of government.

City Council

- Campaign Financing is reviewed by OCPF.
- Nomination papers include OCPF information.
- OCPF hosts online training
- OCPF Contact Info
 - Phone: (617) 979-8300
 - Website: www.ocpf.us

School Committee

- Campaign Financing is reviewed by Worcester Elections Commission.
- First Steps:
 - Hire campaign treasurer
 - Start a campaign bank account.
 - Fill out forms in Nomination Paper packet.
- Worcester Elections Commission:
 - Phone: (508) 799-1134
 - www.worcesterma.gov/elections

City Council Districts

[wp_all.pdf \(worcesterma.gov\)](#)

CITY COUNCIL DISTRICT 1

WARD: 1 & 2

CITY COUNCIL DISTRICT 2

WARD: 3 & 4

CITY COUNCIL DISTRICT 3

WARD: 5 & 6

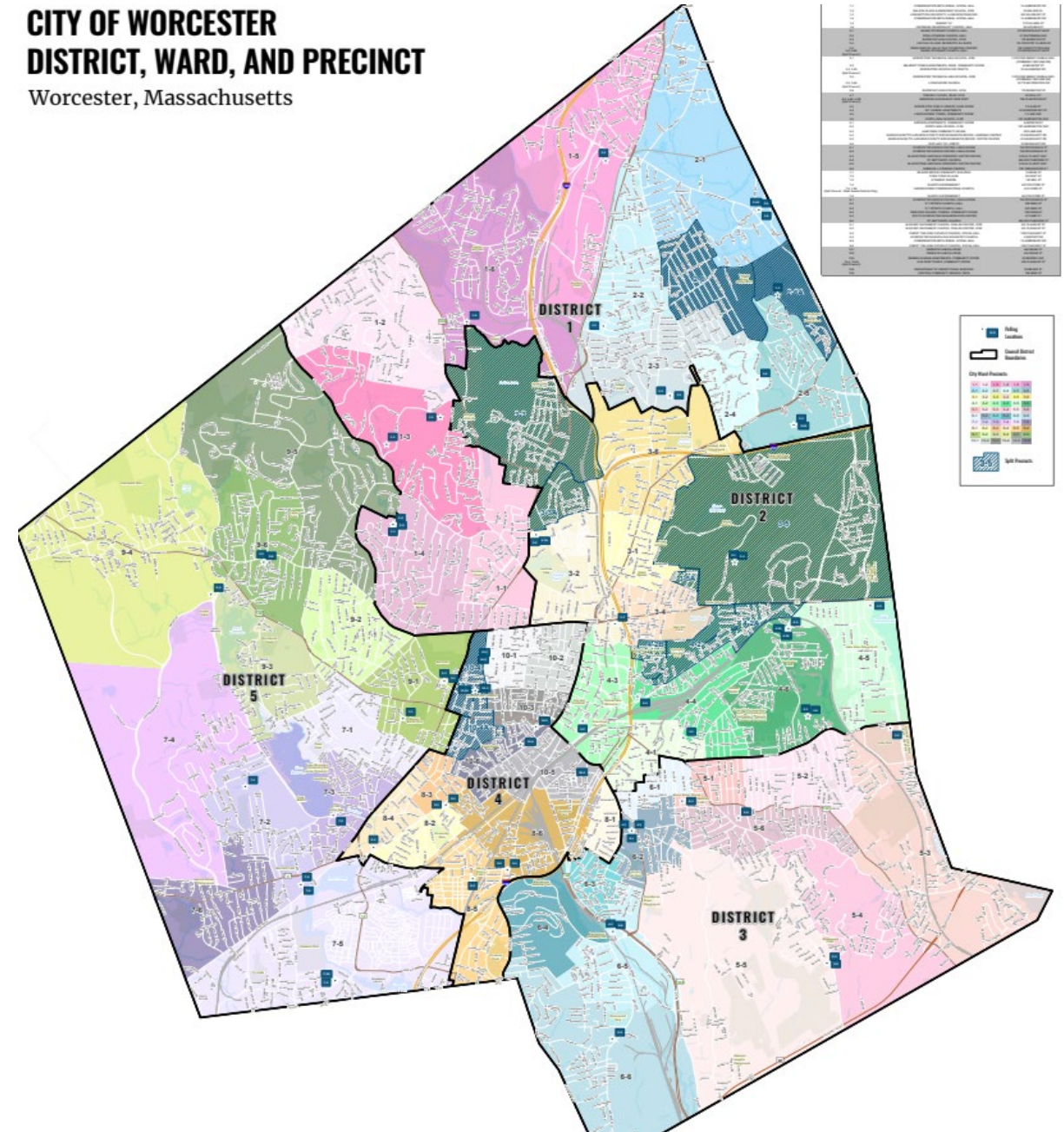
CITY COUNCIL DISTRICT 4

WARD: 8 & 10

CITY COUNCIL DISTRICT 5

WARD: 7 & 9

CITY OF WORCESTER DISTRICT, WARD, AND PRECINCT Worcester, Massachusetts



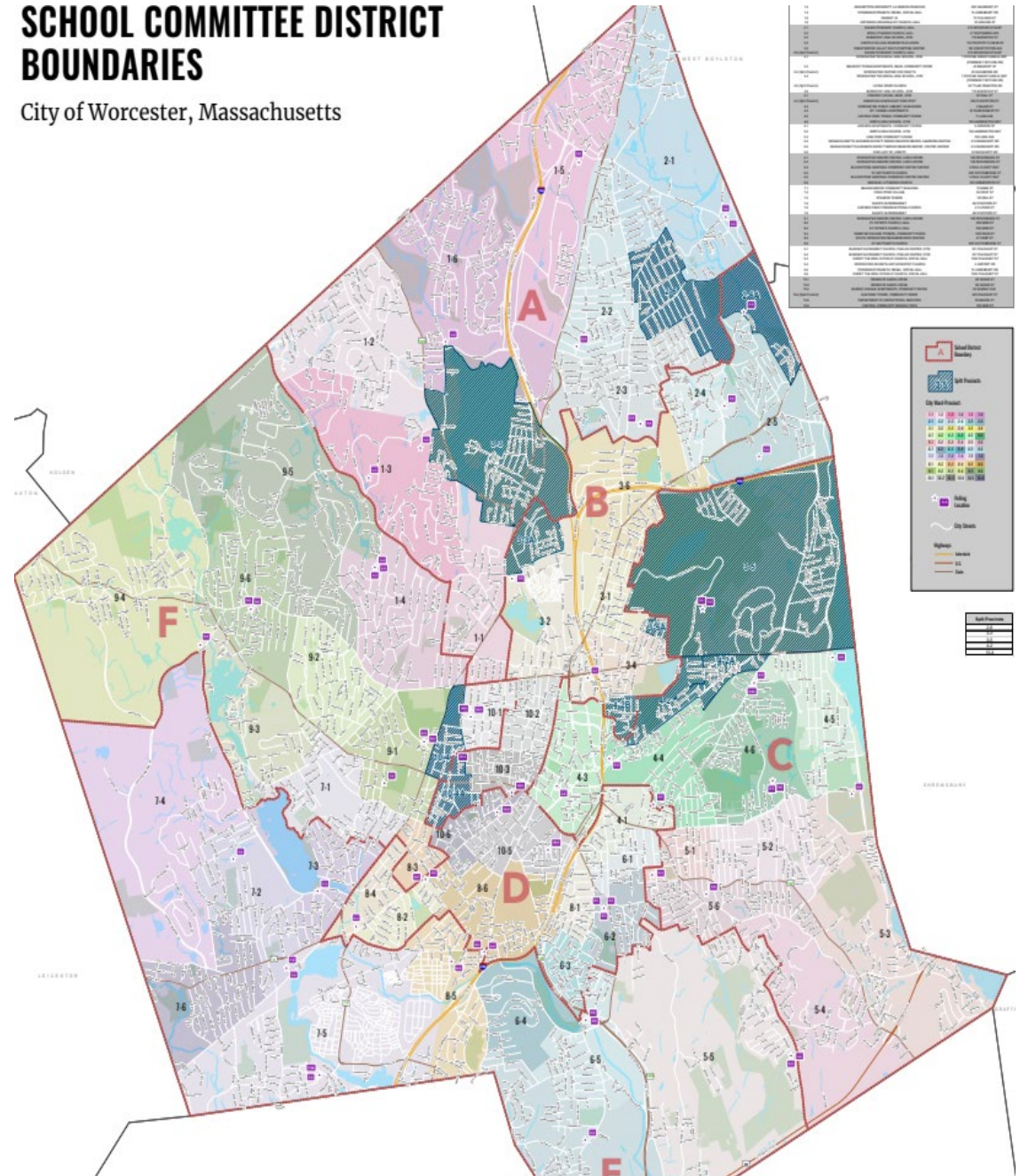
School Committee Districts

1. THERE ARE 6 SCHOOL COMMITTEE DISTRICTS **A - F**
2. TWO AT-LARGE SCHOOL COMMITTEE MEMBERS

[2022-school-districts-map.pdf \(worcesterma.gov\)](#)

SCHOOL COMMITTEE DISTRICT BOUNDARIES

City of Worcester, Massachusetts






Where Do I Vote?

[Where Do I Vote? | City of Worcester, MA \(worcesterma.gov\)](#)

VOTER DETAILS

The following results are from the Commonwealth of Massachusetts Central Voter Registry. If you have any further questions, please contact the Election Commission office at 508-799-1133 or email elections@worcesterma.gov.

Name	[REDACTED]
Address	[REDACTED]
District	City Council: 2 School Committee: B
Ward - Precinct	3 - 5A  Ward/Precinct & Poll Location Map
Voter Status	Active
Party	  What Does It Mean?
Next Election	September 5, 2023 (Preliminary Election)
Polling Location	LIVING WORD CHURCH OF WORCESTER, GREAT HALL 30 TYLER PRENTICE ROAD

School Committee	Ward	Precinct
A	01	01
A	01	02
A	01	03
A	01	05
A	01	06
A	02	01
A	02	02
A	02	03
A	02	06
A	03	03

School Committee	Ward	Precinct
B	02	04
B	02	05
B	02	06A
B	03	01
B	03	02
B	03	03A
B	03	04
B	03	05A
B	03	06
B	04	02B
B	10	02
B	10	03
B	10	04A

School Committee	Ward	Precinct	
C	03	05	
C	04	02	
C	04	02A	STATE ELECTION SPLIT
C	04	03	
C	04	04	
C	04	05	
C	04	06	
C	05	01	
C	05	02	
C	05	03	
C	05	04	
C	05	06	

School Committee	Ward	Precinct
D	04	01
D	06	01
D	06	02
D	06	03
D	08	01
D	08	02
D	08	04
D	08	06
D	10	05
D	10	06

School Committee	Ward	Precinct	
E	05	05	
E	06	04	
E	06	05	
E	06	06	
E	07	02	
E	07	03	
E	07	04	
E	07	05	
E	07	05A	STATE ELECTION SPLIT
E	07	06	
E	08	05	

School Committee	Ward	Precinct
F	01	04
F	07	01
F	08	03
F	09	01
F	09	02
F	09	03
F	09	04
F	09	05
F	09	06
F	10	01
F	10	04

2025 MUNICIPAL ELECTION CALENDAR

Tuesday, March 4th, 8:45am	First day & hour to access nomination papers @ the offices of the Board of Election Commissioners, Room 208, City Hall.
Tuesday, May 6th, 5:00 pm	Last day & hour for submitting nomination papers to the Board of Election Commissioners for certification of signatures.
Thursday, May 15th, 5:00 pm	Last day & hour to file a withdrawal or objections to nomination of candidates with the Board of Election Commissioners.
Saturday, August 23rd	Last day & hour to register to vote in the Preliminary Election. Office Hours 8 AM – 5 PM
Tuesday, Sept. 2nd	Preliminary Election, Polls are open 7:00 am to 8:00 pm. <i>(if necessary, Worcester Charter Section 7-4f)</i>
Tuesday, Sept. 9th	Last day & hour to decline nomination for election to Mayor, Council, or School Committee and for submitting non-binding public opinion advisory questions for certification of signatures.
Saturday, October 25th	Last day & hour to register to vote in the Municipal Election. Office Hours 8 AM – 5 PM
Tuesday, Nov. 4th	Municipal Election, Polls are open 7:00 am to 8:00 pm.

Election Process: A Quick Guide

- Determine ballot through nomination process
- Process Vote By Mail, Absentee Applications, and Registrations up until the determined deadlines
- Early Voting
 - Early VBM/Absentee
 - Early Voting in Person
 - Central Tabulation
- Preparing for Election Day
 - Poll workers
 - Locations
 - Materials, ballots
- Election Day
 - Auditing locations
 - Troubleshooting
 - Reporting out results





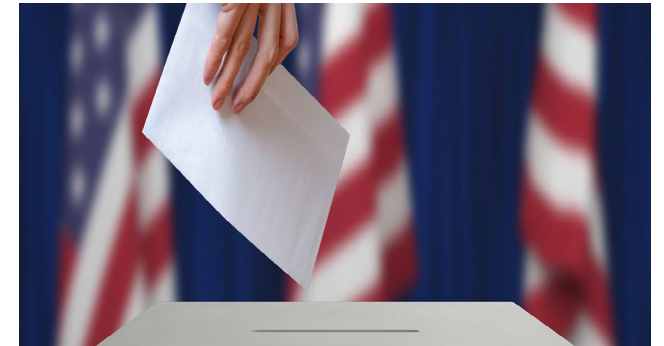
Voter Registration Information

YOU MAY REGISTER TO VOTE IN MASSACHUSETTS IF:

- You are a citizen of the United States; and
- You will be at least 18 years of age on or before the next election; and
- You are a resident of Massachusetts; and
- You are not currently incarcerated by reason of a felony conviction.
- If you meet the above requirements, you may register to vote online, by mail, or in-person. www.registertovotema.com

Interpreting Results: 2023

- November 7, 2023 Election Results
 - TOTAL REGISTERED VOTERS- CITY OF WORCESTER: 112,326
 - TOTAL REGISTERED VOTERS- SPECIAL STATE: 12,531
 - TOTAL BALLOTS CAST IN MUNICIPAL ELECTION: 21,951
 - TOTAL BALLOTS CAST IN SPECIAL STATE ELECTION: 2,711
 - TOTAL BALLOTS CAST IN BOTH ELECTIONS: 24,662
 - VOTER TURNOUT TOTAL- MUNICIPAL ELECTION: 19.54%
 - VOTER TURNOUT TOTAL- SPECIAL STATE ELECTION: 21.63%



2023 Election Changes

- VOTES Act in place
- More options for voting
- New Election Process
 - District School Committee Seats
 - Redistricting

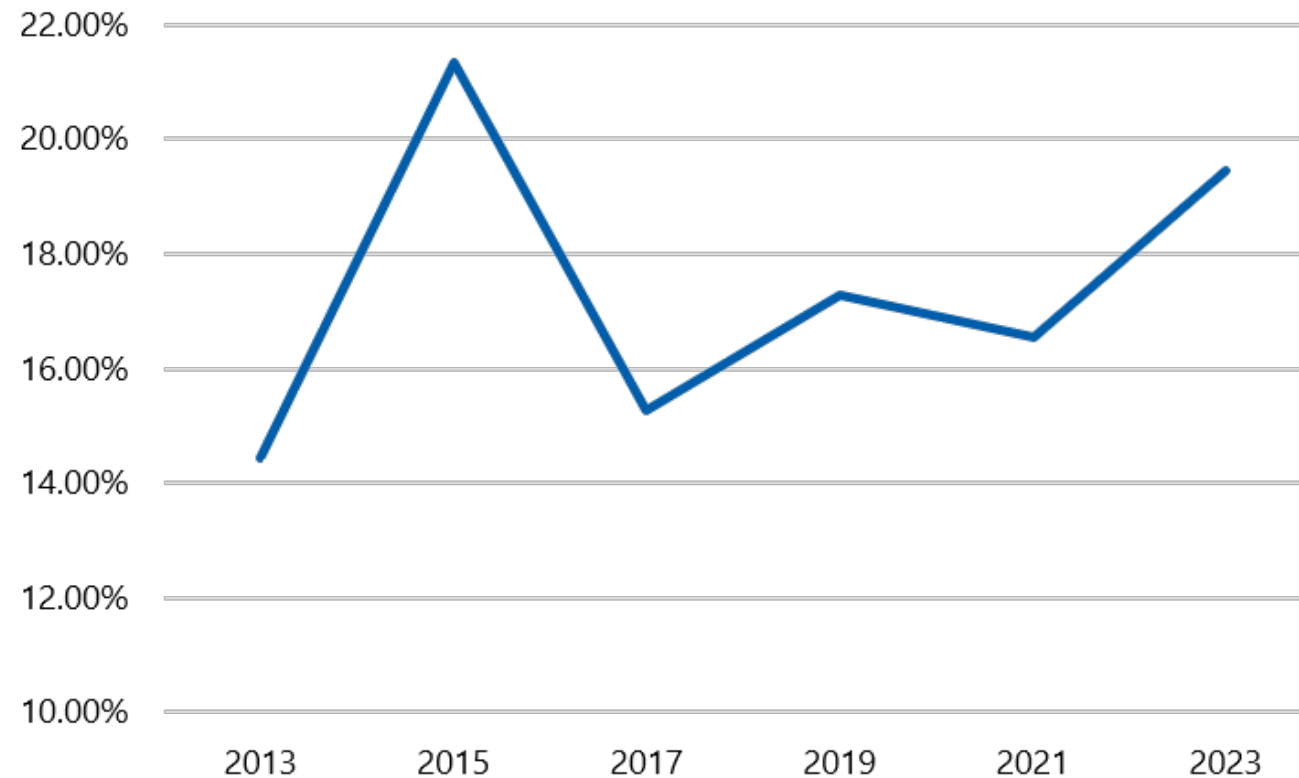


Increased Voting Options in 2023: Absentee, Vote by Mail, Early Voting



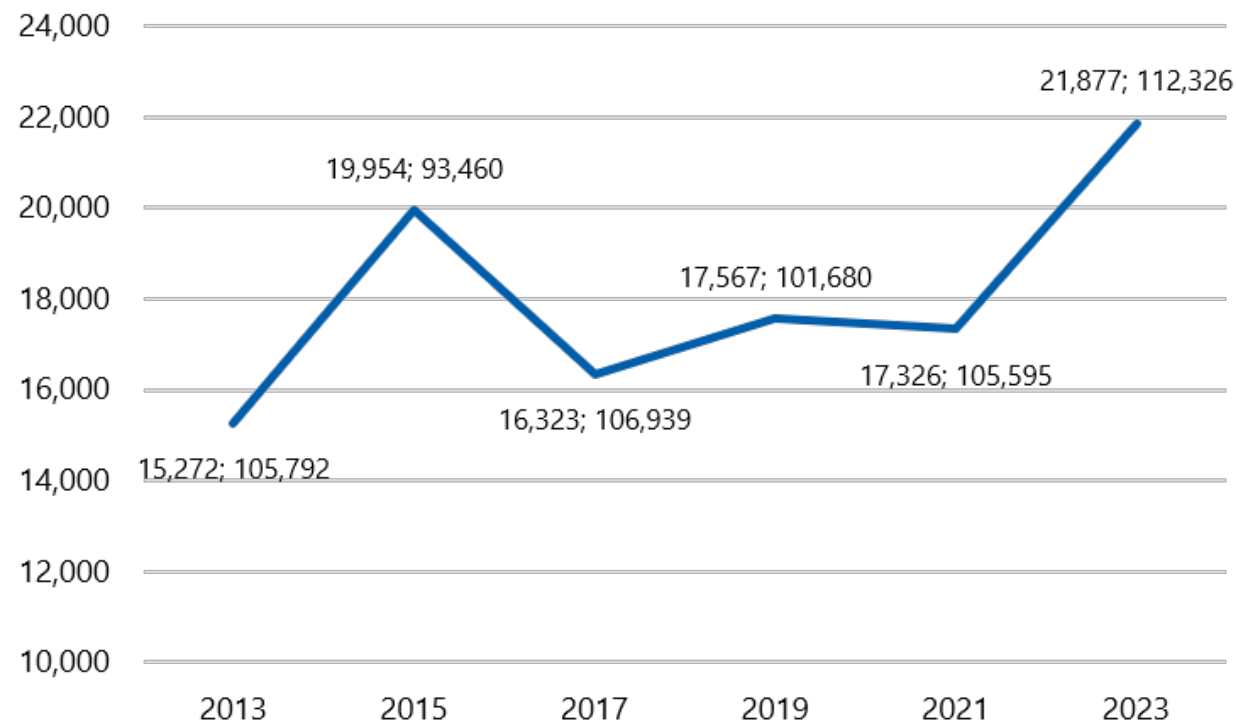
- Absentee Ballot
- Early voting by mail
 - 8,000 EVBM requests
 - Nearly 6,000 voted early by mail
- Early voting in person
 - 1,000 early voters in person in 2023

Citywide Percentage Turnout in Municipal Elections, 2013-2023



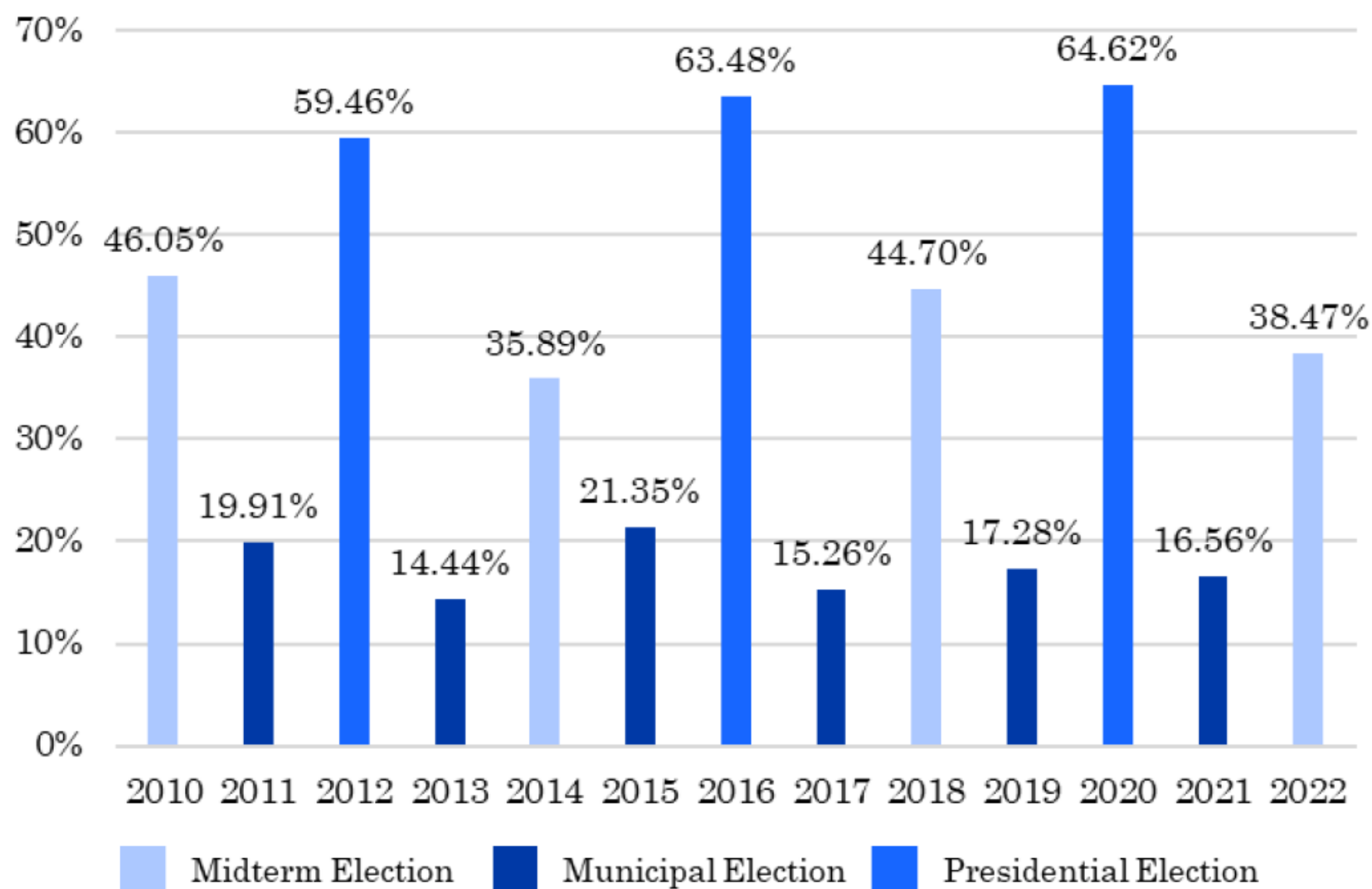
(Source: City of Worcester, Elections Commission, WRRB)

Number of cast ballots (left label) and total registered voters (right label) from 2013 to 2023



(Source: City of Worcester, Elections Commission, WRRB)

Turnout Percentage in November Elections Since 2010



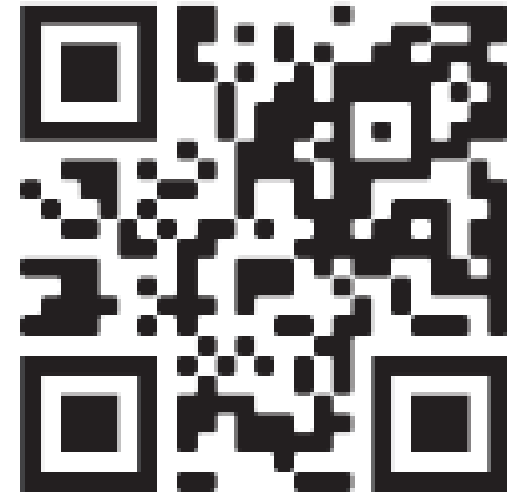
Register to Become a Poll Worker!



- The Election Commission is looking for a new generation of Poll Workers.
- If you are interested and would like to learn more about how to serve your community in this exciting election season, please fill out an application on our website and the Election Commission will be in contact with you soon.

Your Vote Counts!

To learn more about the **Municipal Election, Early Voting, Vote By Mail** and **your polling location**, please visit www.worcesterma.gov/elections.



Questions or Comments?

WORCESTER CITY CLERK

Phone: 508-799-1134

Email: elections@worcesterma.gov

City Hall, Room 208

www.worcesterma.gov/elections



The City of

WORCESTER