

7 + .5' 8, /', 1'



6 (& 21' 8, /', 1'

.H\ 3ODQ

\$UFKLVHFW V 6WDPS

3URMHFW
 *UDIWRQ :RRGV
 :RUFHVWHU 0\$
 &OLHQW
 %UDQQW /DQH 'HYH
 //&

3URMHFW
 6FDOH
 ,V VXH 'DWH
 =%\$ 6XEPLWDO

5HYLVLRQV 'DWH

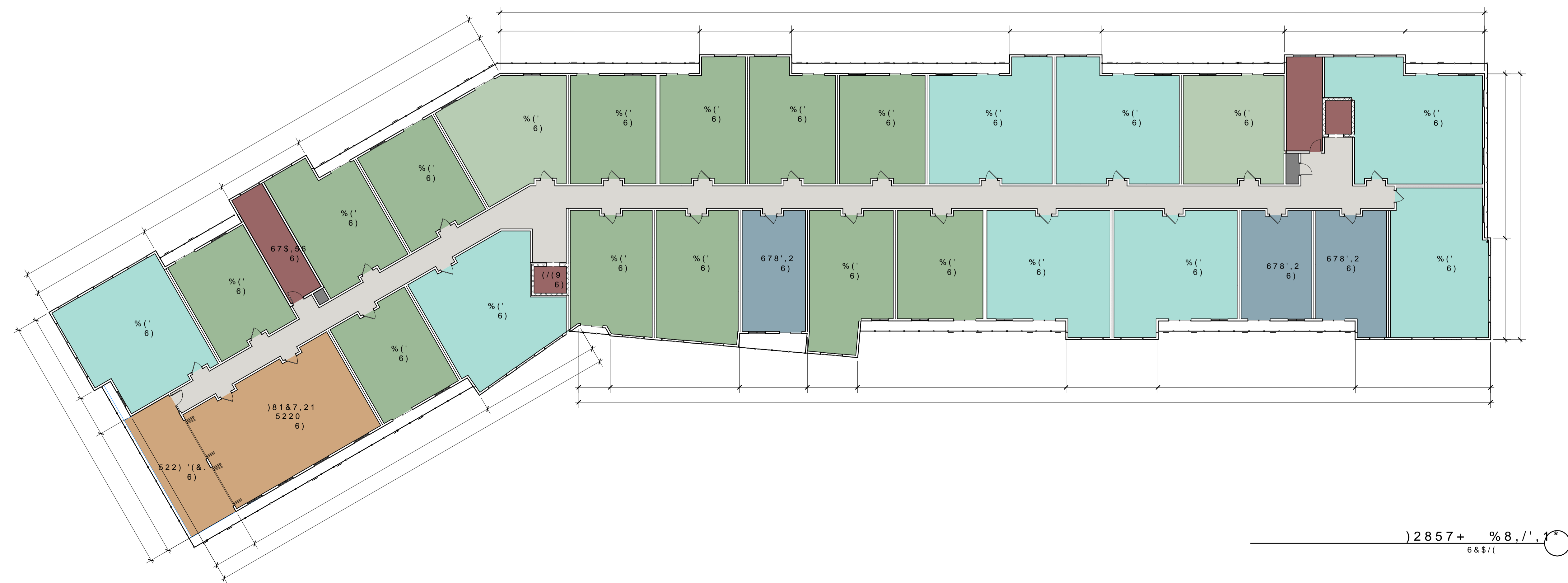
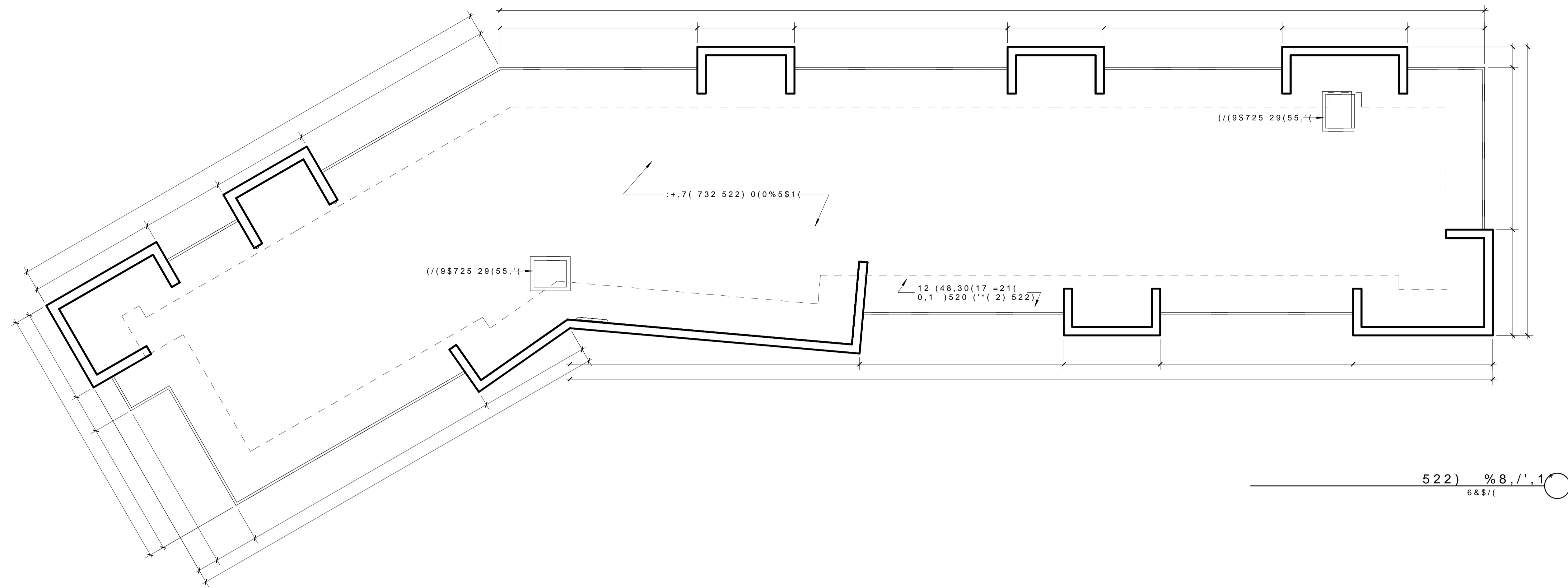
'UDZLQJ 7LWOH
 %8, /', 1')/225 3/S16

6KHHW 1XPEHU



x ÈJOn (0³A0I z...
 *IRXÁ0IÁ³
 ÈII 00+ *...ÈXÁ0 ÈII
 R +³ +K X 11001
 X00 000 È0II
 X ÈJOnP1...x

1:10) 2880170 81 5/1 188 8558110170 15 116 81 2/816
 1:100) 2880170 81 5/1 188 8558110170 15 116 81 2/816
 1:100) 2880170 81 5/1 188 8558110170 15 116 81 2/816
 1:100) 2880170 81 5/1 188 8558110170 15 116 81 2/816
 1:100) 2880170 81 5/1 188 8558110170 15 116 81 2/816



.H\ 30DQ

SUFKLWHFW V 6WDPS

3URMHFW
*UDIWRQ :RRGV

:RUFHVWHU 0\$

&OLHQR
%UDQQW /DQH 'HY
//&

3URMHFW
6FDOH
,V VXH 'DWH
=%\$ 6XEPLWDO

5HYLVLRQV 'DWH

'UDZLQJ 7LWOH
%8, /', 1')/225 3/S16

6KHHW 1XPEHU



x ÈJOn (0³Á0I z...
«IRXÁ0IÁ³
DII 00+ ... ²²EXÁ0 DII
R +³ +K X 11001
X00 000 0011
x ÈJOnP1...x

1:01 2881176 81 51/ 188 8555110176 15 16 51 2/816
1: 8871 248121 25 01288111 14184 88 111 81 3181
1: 0221072 21 085/1 554 1428 12 252P 11021 55/1
1: 881111 04 81 30851 130 28 232551
1: 081/ 554 7184 14



.H\ 30DQ

\$UFKLVHFW V 6WDPS



3URMHFW
*UDIWRQ :RRGV

:RUFHVWHU 0\$

&OLHQR
%UDQQW /DQH 'HY
//&

3URMHFW
6FDOH
.VVXH 'DWH
=%\$ 6XEPLWDO

5HYLVLRQV 'DWH

'UDZLQJ 7LWOH
%8./,1' ((9\$7,216

6KHHW 1XPEHU

\$

x ÈJOn (0³Á0I z...
«!RXÁ0IÁ³
DII 00* *...²EXÁ0 DII
R *8 +K * 11001
x00 000 0011
x ÈJOnP1...x

1101 2881176 81 81/ 188 8558110176 15 16 81 21816
1 8871 218121 28 012881171 1418 88 111 81 81 818 1
11 0221070 21 08811 858 1188 12 2881 11021 811
11 0221070 21 08811 858 1188 12 2881 11021 811
08811 858 1188 12 2881 11021 811