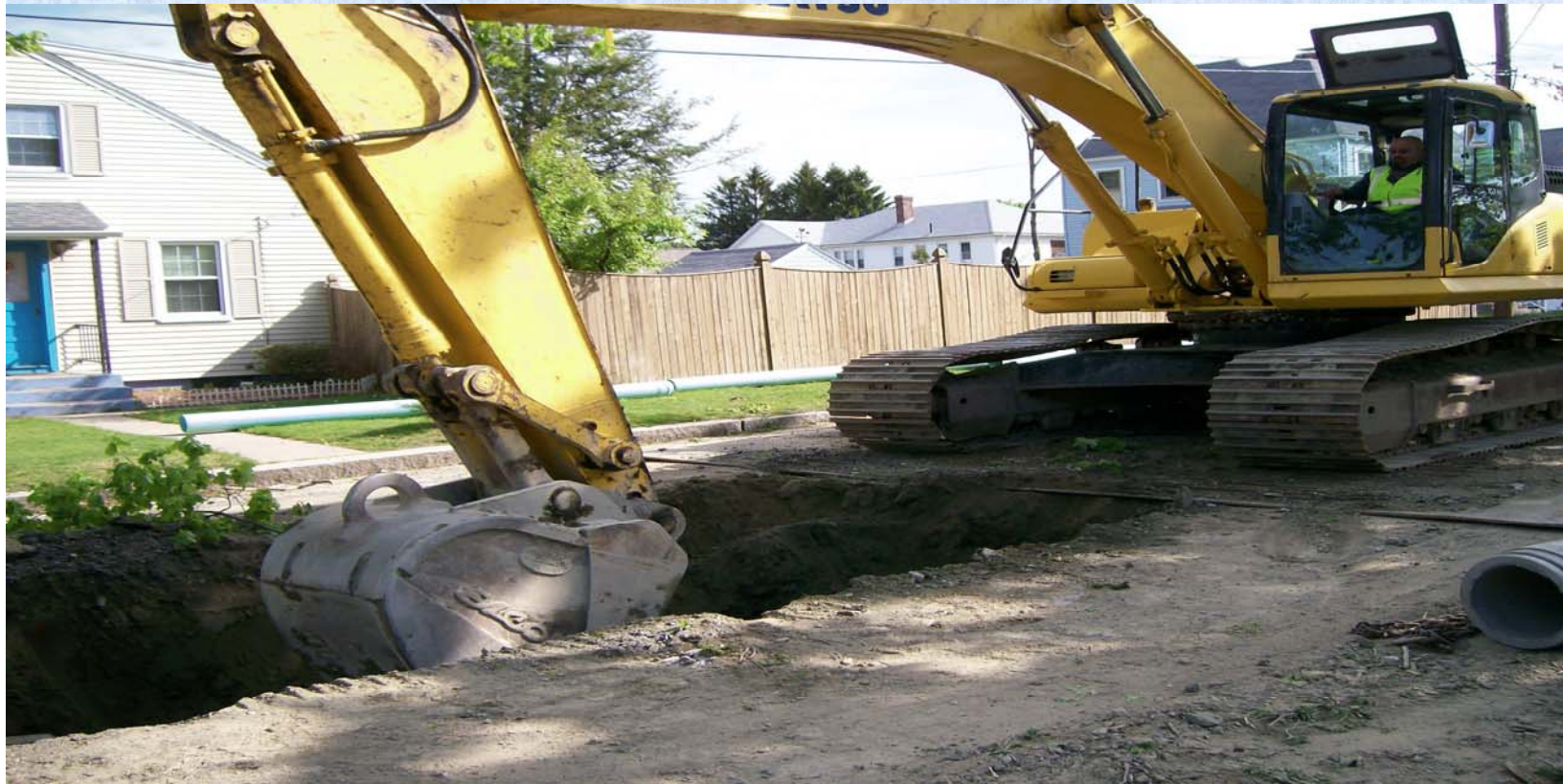


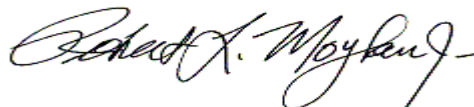


*City of Worcester  
Department of Public Works  
and Parks*

*Construction  
Progress Report*



Quarter Ending: September 30, 2011

Submitted by: 

Robert L. Moylan, Jr.  
Commissioner of Public Works & Parks

# CONSTRUCTION PROGRESS REPORT

**SECTION 1** - (pages 2 thru 26) - Locations for which the specified work has been funded. These locations are generally in various stages of design or construction. Work on some of the locations in this section could be delayed due to conflicts with utilities or MassDOT projects.

**SECTION 2** - (pages 27 thru 29) - Locations of approved Public Works programs. These locations are provided for informational purposes only. They are **not** funded and therefore have no construction schedule.

## SECTION 1

| <u>STREET</u>  | <u>TYPE OF WORK</u>                                | <u>% COMPLETE</u> |
|--|--|-------------------|
| <b>Academy Street</b><br>Salisbury St. to Metcalf St.                | Water Main Clean & Line                            | 100%              |
| <b>Acton Street</b><br>Houghton St. to Vale St.                      | Street Resurfacing                                 | 70%               |
| <b>Adams Street</b><br>#25 to Ellsmere St.                           | Co-Operative Patch                                 | 100%              |
| <b>Addison Street</b><br>Acton St. to Houghton St.                   | Street Resurfacing                                 |                   |
| <b>Adelle Circuit</b><br>Greenwood St. E S'y to<br>Greenwood St. S'y | Street Resurfacing                                 |                   |
| <b>Adolph Street</b><br>Olga Ave. to End                             | Sewer Main Reconstruction                          |                   |
| <b>Alameda Road</b><br>Massasoit Rd. to Greencourt St.               | Street Resurfacing                                 |                   |
| <b>Allston Avenue</b><br>Greenfield St. to End                       | Street Resurfacing                                 |                   |
| <b>Amherst Street</b><br>Vicinity 81<br>Vicinity 127                 | Sidewalk Reconstruction<br>Sidewalk Reconstruction |                   |
| <b>Arbutus Road</b><br>Vicinity 20, 25, 29 &<br>415 Burncoat St.     | Sidewalk Reconstruction                            | 100%              |
| <b>Armory Street</b><br>Gardner St. 500' S'y                         | SWIP Project                                       | 90%               |
| <b>Apricot Street</b><br>Main St. to Leicester Town Line             | Street Resurfacing                                 |                   |
| <b>Ash Street</b><br>Green St. to Washington St.                     | Street Resurfacing<br>Water Service Reconstruction | 70%<br>100%       |
| <b>Ashland Street</b><br>Pleasant St. to Elm St.                     | Street Resurfacing                                 |                   |

| <u><b>STREET</b></u>   | <u><b>TYPE OF WORK</b></u>                         | <u><b>% COMPLETE</b></u> |
|--|--|--------------------------|
| <b>Ashmore Road</b><br>Vicinity 2                              | Sidewalk Reconstruction                            |                          |
| <b>Ashton Street</b><br>Sturgis St. to McKinley Rd.            | Street Resurfacing<br>Water Service Reconstruction | 25%                      |
| <b>Ashwood Street</b><br>Acton St. to Park Terr. Rd.           | Street Resurfacing                                 | 70%                      |
| <b>Assumption Avenue</b><br>Vicinity 130 on Burncoat St. Side  | Sidewalk Reconstruction                            | 75%                      |
| <b>Astrid Avenue</b><br>Providence St. to Upsala St.           | Street Resurfacing<br>Water Main Reconstruction    | 25%                      |
| <b>Austin Street</b><br>Dewey St. to Irving St.                | Street Resurfacing                                 | 100%                     |
| <b>Aylesbury/Brookshire/Flagg Project</b>                      | Street Resurfacing                                 |                          |
| <b>Ballard Street Pipe Yard</b><br>Around New Storage Building | Water Main Reconstruction                          | 100%                     |
| <b>Baltic Road</b><br>Doane St. to Grammont Rd.                | Sewer Main Reconstruction                          | 100%                     |
| <b>Barnard Road</b><br>Vicinity 20                             | Sidewalk Reconstruction                            | 50%                      |
| <b>Bedford Avenue</b><br>Fairmont Ave. to Dana Ave.            | Street Resurfacing<br>Water Service Reconstruction | 100%                     |
| <b>Beeching Street</b><br>Vicinity 112                         | Sidewalk Reconstruction                            |                          |
| <b>Bellevue Street</b><br>Pleasant St. to Bluff St.            | Street Resurfacing                                 |                          |
| <b>Belmont Street</b><br>Alvarado Ave. to McRae Ct.            | Belmont St. Improvement Project                    | 20%                      |
| <b>Belvidere Avenue</b><br>Burncoat St. to Park View Dr.       | Street Resurfacing                                 |                          |

| <u><b>STREET</b></u>   | <u><b>TYPE OF WORK</b></u>  | <u><b>% COMPLETE</b></u> |
|--|---|--------------------------|
| <b>Benson Street</b><br>Massasoit Rd. to End   | Street Resurfacing  |                          |
| <b>Berkshire Street</b><br>Vicinity 12   | Sidewalk Reconstruction   |                          |
| <b>Beverly Road</b><br>Rexhame Rd. to Thorndyke Rd.  | Street Resurfacing  |                          |
| <b>Birch Street</b><br>Shirley St. to Beaver St.   | Street Resurfacing  |                          |
| <b>Bleeker Street</b><br>Orient St. to Plantation St.  | Street Resurfacing  |                          |
| <b>Borci Square</b><br>Around Monument   | Sidewalk Reconstruction   |                          |
| <b>Brigham Road</b><br>Moreland St. to End   | Street Resurfacing  |                          |
| <b>Brighton Road</b><br>Burncoat St. to Bay State Rd.  | Street Resurfacing<br>Water Service Reconstruction                            | 20%<br>100%              |
| <b>Brookline Street</b><br>Tallawanda Dr. to End<br>Tallawanda Dr. to #158   | Street Resurfacing<br>Water Service Reconstruction                            | 70%<br>100%              |
| <b>Buckingham Street</b><br>Vicinity 8, 10, 11, 12, 15<br>20, 28, 29, 32   | Sidewalk Reconstruction   | 100%                     |
| <b>Buckley Road</b><br>Zenith Dr. S'y  | Street Resurfacing  | 70%                      |
| <b>Burncoat Street</b><br>New Construction &<br>Repair where needed;<br>Where needed<br>From Brittain Sq. to Randolph Rd;<br>Vicinity 485 on Ivernia Rd. | Sidewalk Reconstruction<br>Sidewalk Reconstruction<br>Sidewalk Reconstruction | 10%<br>100%<br>100%      |
| <b>Butler Street</b><br>McKeon Rd. to End  | Street Resurfacing  |                          |

| <u><b>STREET</b></u>  | <u><b>TYPE OF WORK</b></u>                         | <u><b>% COMPLETE</b></u> |
|---|--|--------------------------|
| <b>Camassa Terrace</b><br>Shrewsbury St. to Nebraska St.                                | Private Street Conversion                          | 100%                     |
| <b>Cameron Street</b><br>Franklin St. to Minots St.                                     | Street Resurfacing<br>Water Main Reconstruction    | 75%                      |
| <b>Camelot Drive</b><br>Moreland St. to Merlin St.                                      | Street Resurfacing                                 |                          |
| <b>Canton Street</b><br>Millbury St. to Quinsigamond Ave.                               | Street Resurfacing                                 |                          |
| <b>Cardinal Road</b><br>Pleasant St. to Pinnacle St.                                    | Street Resurfacing<br>Water Main Reconstruction    | 100%                     |
| <b>Caro Street</b><br>College St. to Boyden St.   | Street Resurfacing                                 | 100%                     |
| <b>Carter Road</b><br>End of Public 520'<br>Moreland St. to 1,926' W of<br>Moreland St; | Private Street Conversion<br>Street Resurfacing    | 100%<br>100%             |
| <b>Cascade Road</b><br>Mower St. to Juniper Rd.   | Private Street Conversion                          | 95% (design)             |
| <b>Chadwick Street</b><br>Grove St. to Aspinwall Rd.                                    | Street Resurfacing<br>Water Service Reconstruction | 100%                     |
| <b>Chamberlain Parkway</b><br>Both Sides  | Sidewalk Reconstruction                            |                          |
| <b>Chatham Village Road</b><br>Entire   | Street Resurfacing                                 | 90%                      |
| <b>Cheney Street</b><br>Grand St. to Gates St.  | Street Resurfacing                                 |                          |
| <b>Chevy Chase Road</b><br>Brattle St. to Smithfield St.                                | Street Resurfacing<br>Water Service Reconstruction | 100%                     |
| <b>Chicopee Street</b><br>Glendale St. N'y  | Private Street Conversion                          | 100% (design)            |

| <u><b>STREET</b></u>  | <u><b>TYPE OF WORK</b></u>  | <u><b>% COMPLETE</b></u> |
|---|---|--------------------------|
| <b>Chippewa Road</b><br>Vicinity 41   | Sidewalk Reconstruction   |                          |
| <b>Circuit Avenue E</b><br>Circuit Ave. S to Circuit Ave. N                                     | Street Resurfacing<br>Water Service Reconstruction                    | 100%                     |
| <b>City View Street</b><br>College St. to End   | Street Resurfacing<br>Water Service Reconstruction                    | 100%                     |
| <b>Claridge Road</b><br>Birch Hill Rd. to Ridgewood Rd.   | Street Resurfacing<br>Water Service Reconstruction                    | 100%                     |
| <b>Clark Street</b><br>Vicinity 139 & 157 (New)   | Sidewalk Reconstruction   | 100%                     |
| <b>Clason Road</b><br>West Boylston Dr. to End  | Street Resurfacing<br>Water Service Reconstruction                    | 100%                     |
| <b>Clay Street</b><br>College St. to Boyden St.<br>Public Portion                               | Street Resurfacing  | 50%                      |
| <b>Clement Street</b><br>Main St. to Beaver St.   | Street Resurfacing  |                          |
| <b>Coburn Avenue</b><br>Hamilton St. to #362<br>#464 to Bridle Path<br>Anna St. to Hamilton St. | Street Resurfacing<br>Street Resurfacing<br>Water Main Reconstruction | 90%                      |
| <b>Colby Road</b><br>#14 Trinity Ave. to 141' S<br>of Trinity Ave.                              | Street Resurfacing  | 70%                      |
| <b>Collins Street</b><br>Bristol St. N 169' of E. Mountain St.                                  | Water Service Reconstruction  | 10%                      |
| <b>Constitution Avenue</b><br>142 Tacoma St. to 180<br>Constitution Ave.                        | Street Resurfacing  |                          |

| <u><b>STREET</b></u>  | <u><b>TYPE OF WORK</b></u>  | <u><b>% COMPLETE</b></u> |
|---|---|--------------------------|
| <b>Coolidge Road</b><br>Vicinity 64<br>Chandler St. to Pleasant St. | Sidewalk Reconstruction<br>Street Resurfacing<br>Water Service Reconstruction | 60%<br>100%              |
| <b>County Street</b><br>Grafton St. to Simone St.                   | Water Main Reconstruction   | 100%                     |
| <b>Coventry Road</b><br>Burncoat St. to Bay State Rd.               | Street Resurfacing<br>Water Service Reconstruction                            | 20%<br>100%              |
| <b>Cowden Street</b><br>Edlin St. to Heard St.                      | Street Resurfacing  |                          |
| <b>Creswell Road</b><br>Vicinity 24<br>Vicinity 37                  | Sidewalk Reconstruction<br>Sidewalk Reconstruction                            |                          |
| <b>Cutler Street</b><br>Vicinity 90 on Vale St.                     | Sidewalk Reconstruction   |                          |
| <b>Cutting Avenue</b><br>Vicinity 6                                 | Sidewalk Reconstruction   | 100%                     |
| <b>Darling Street</b><br>Beverly Rd. to End                         | Street Resurfacing<br>Water Service Reconstruction                            | 100%                     |
| <b>Dell Avenue</b><br>Pilgrim Ave. to Plantation St.                | Water Main Reconstruction   | 90%                      |
| <b>DeMarco Terrace</b><br>Shrewsbury St. to Lyon Pl.                | Street Resurfacing<br>Water Main Reconstruction                               | 25%                      |
| <b>Division Street</b><br>Plantation St. to Orient St.              | Street Resurfacing  |                          |
| <b>Dixfield Street</b><br>Public to Penobscot St.                   | Private Street Conversion   | 90% (design)             |
| <b>Dixon Street</b><br>#7 - #10                                     | Co-Operative Patch  | 100%                     |

| <u><b>STREET</b></u>  | <u><b>TYPE OF WORK</b></u>  | <u><b>% COMPLETE</b></u> |
|---|---|--------------------------|
| <b>Donna Road</b><br>Vicinity 15 on Barry Rd. side  | Sidewalk Reconstruction   |                          |
| <b>Downtown Area</b>  | Street Resurfacing  |                          |
| <b>Drummond Avenue</b><br>Holden St. to Grove St.   | Street Resurfacing  |                          |
| <b>Dupuis Avenue</b><br>Massasoit Rd. to Woodcliffe Ave.  | Private Street Conversion   | 100%                     |
| <b>Dutton Street</b><br>College St. Across Davenport St.  | Sidewalk Reconstruction   |                          |
| <b>Eames Road</b><br>Mount Ave. to Higgins St.  | Private Street Conversion   | 100% (design)            |
| <b>Echo Street</b><br>Julien Ave. to Dupuis Ave.  | Private Street Conversion   | 100%                     |
| <b>Edlin Street</b><br>Clover St. to End  | Street Resurfacing  |                          |
| <b>Ellsworth Street</b><br>Millbury St. to Quinsigamond Ave.  | Street Resurfacing  | 50%                      |
| <b>Elm Street</b><br>50 Elm St. to Linden St.<br>South Side from West St.<br>to Fruit St.<br>Pleasant St. to Elm St.-<br>Both Sides | Sidewalk Reconstruction<br>Sidewalk Reconstruction<br>Sidewalk Reconstruction | 100%<br>100%             |
| <b>Elmwood Street</b><br>Pleasant St. N to 653' N of<br>Pleasant St.  | Street Resurfacing  |                          |
| <b>Euclid Avenue</b><br>Vernon St. to Perry Ave.  | Street Resurfacing  |                          |
| <b>Everard Street</b><br>Belmont St. to Breck St.   | Street Resurfacing<br>Water Service Reconstruction                            | 10%                      |

| <u><b>STREET</b></u>  | <u><b>TYPE OF WORK</b></u>                         | <u><b>% COMPLETE</b></u> |
|---|--|--------------------------|
| <b>Fairhaven Road</b><br>Vicinity 176                             | Sidewalk Reconstruction                            | 100%                     |
| <b>Falcon Street</b><br>Stafford St. to Willvail St.              | Street Resurfacing                                 |                          |
| <b>Fales Street</b><br>West Boylston St. to Burncoat St.          | Street Resurfacing                                 |                          |
| <b>Fenwood Road</b><br>Massasoit Rd. to Wisteria St.              | Street Resurfacing                                 |                          |
| <b>Flagg Street</b><br>Vicinity 37 on Rittenhouse Rd.<br>Side     | Sidewalk Reconstruction                            |                          |
| <b>Fletcher Street</b><br>Amanola Ave. to Montgomery Ave.         | Street Resurfacing<br>Water Service Reconstruction | 10%                      |
| <b>Fountain Street</b><br>Belmont St. N - Public Portion          | Street Resurfacing                                 |                          |
| <b>Fox Street (#2)</b><br>Water St. to End<br>At Water St.        | Street Resurfacing<br>Water Service Reconstruction | 50%<br>100%              |
| <b>Franconia Street</b><br>June St. to Howland Terr.              | Street Resurfacing                                 |                          |
| <b>Frank Street</b><br>Belmont St. to Wigwam Ave.                 | Street Resurfacing<br>Water Service Reconstruction | 10%                      |
| <b>Franklin Street</b><br>Main St. to Salem St.                   | Sidewalk Reconstruction                            | 75%                      |
| <b>Frothingham Road</b><br>Lincoln St. to Melrose St.             | Street Resurfacing                                 | 70%                      |
| <b>Fruit Street</b><br>Both Sides from Pleasant St.<br>to Elm St. | Sidewalk Reconstruction                            | 100%                     |

| <u><b>STREET</b></u>   | <u><b>TYPE OF WORK</b></u>                               | <u><b>% COMPLETE</b></u> |
|--|--|--------------------------|
| <b>Gage Street</b><br>Ford St. to East Shelby St.<br>Elliott St. to Shelby St. | Sewer Main Reconstruction<br>Street Resurfacing          | 50%                      |
| <b>Gilman Street</b><br>Lincoln St. to New St.                                 | Street Resurfacing                                       | 70%                      |
| <b>Glade Street</b><br>Southbridge St. to Attleboro St.                        | Street Resurfacing<br>Water Service Reconstruction       | 100%                     |
| <b>Glenwood Street</b><br>Benefit St. to Hammond St.                           | Street Resurfacing                                       |                          |
| <b>Glezen Street</b><br>Commonwealth Ave. E'ly to<br>Hurtle Ave.               | Street Resurfacing<br>Water Service Reconstruction       | 70%<br>100%              |
| <b>Goddard Memorial Drive</b><br>Upper Parsons Hill Intersection<br>(HCR)      | Sidewalk Reconstruction                                  |                          |
| <b>Gold Street</b><br>Green St. to Madison St.                                 | Street Resurfacing                                       | 70%                      |
| <b>Gosnold Street</b><br>Vicinity 22 on Andover St.                            | Sidewalk Reconstruction                                  | 100%                     |
| <b>Grafton Street</b><br>Vicinity 1396   | Sidewalk Reconstruction                                  |                          |
| <b>Grandview Avenue</b><br>Abington St. to Stafford St.                        | Street Resurfacing                                       |                          |
| <b>Green Street</b><br>Franklin St. to Kelley Sq.                              | MassDOT - Canal District<br>Water Service Reconstruction | 50%<br>100%              |
| <b>Greenhill Avenue</b><br>Bates Ave. to Colby Ave.                            | Street Resurfacing                                       | 70%                      |
| <b>Grenada Street</b><br>Copperfield Rd. to Tiverton Pkwy.                     | Street Resurfacing<br>Water Service Reconstruction       | 100%                     |

| <b><u>STREET</u></b>  | <b><u>TYPE OF WORK</u></b>                               | <b><u>% COMPLETE</u></b> |
|---|--|--------------------------|
| <b>Grove Street</b><br>Salisbury St. to Lancaster St.<br>Vicinity 474 - 486 | Gateway North Project<br>Sidewalk Reconstruction         |                          |
| <b>Hale Street</b><br>Grafton St. to Plantation St.                         | Street Resurfacing<br>Water Service Reconstruction       | 10%                      |
| <b>Hamilton Street</b><br>Delmont Ave. to Standish St.                      | Sewer Main Reconstruction                                |                          |
| <b>Hammond Street</b><br>Vicinity 12  | Sidewalk Reconstruction                                  |                          |
| <b>Harding Street</b><br>Franklin St. to Winter St.                         | MassDOT - Canal District<br>Water Service Reconstruction | 100%                     |
| <b>Harrison Street</b><br>Vicinity 97                                       | Sidewalk Reconstruction                                  |                          |
| <b>Harvard Street</b><br>Vicinity 12  | Sidewalk Reconstruction                                  |                          |
| <b>Hathaway Street</b><br>Gardner St. to Hancock St.                        | Street Resurfacing                                       |                          |
| <b>Hawthorne Street</b><br>Main St. to Woodland St.                         | Sewer Main Reconstruction<br>Water Main Reconstruction   |                          |
| <b>Heath Street</b><br>Kendig St. S'ly<br>Kendig St. S'ly 500'              | Street Resurfacing<br>Water Service Reconstruction       | 100%                     |
| <b>Henchman Street</b><br>Vicinity 2, 4                                     | Sidewalk Reconstruction                                  |                          |
| <b>Henrietta Street</b><br>Maxwell St. to Esther St.                        | Street Resurfacing                                       |                          |

| <u><b>STREET</b></u>  | <u><b>TYPE OF WORK</b></u>                         | <u><b>% COMPLETE</b></u> |
|---|--|--------------------------|
| <b>Highland Street</b><br>Park Ave. to Newton Sq.                                   | Newton Sq. Sewer Replacement Project               | 100%                     |
| <b>Homer Street</b><br>Park Ave. to Hall St.  | Street Resurfacing<br>Water Service Reconstruction | 100%<br>100%             |
| <b>Houghton Street</b><br>Vicinity 101  | Sidewalk Reconstruction                            |                          |
| <b>Howe Street</b><br>Highland St. to Hampden St.                                   | Street Resurfacing                                 |                          |
| <b>Howland Terrace</b><br>Pleasant St. to Hadwen Rd.<br>Nevada St. to Wetherell St. | Co-Operative Patch<br>Water Service Reconstruction | 100%                     |
| <b>Humboldt Avenue</b><br>Vicinity 80 Salisbury St (HCR)                            | Sidewalk Reconstruction                            |                          |
| <b>Huron Avenue</b><br>Pasadena Pkwy. to Chino Ave.                                 | Water Main Reconstruction                          | 100%                     |
| <b>Ideal Road</b><br>Pioneer Rd. to Sunderland Rd.                                  | Street Resurfacing                                 |                          |
| <b>Imperial Road</b><br>Shrewsbury St. to Caprera Rd.                               | Street Resurfacing<br>Water Service Reconstruction | 25%                      |
| <b>Indian Hill Road</b><br>705' W of Poniken Rd. to Ararat St.                      | Street Resurfacing                                 |                          |
| <b>Institute Road</b><br>Vicinity 128   | Sidewalk Reconstruction                            | 100%                     |
| <b>Intervale Road</b><br>Pleasant St. to Amherst St.                                | Street Resurfacing                                 | 90%                      |
| <b>Irving Street</b><br>Chandler St. to Chatham St.                                 | Co-Operative Patch                                 | 90%                      |
| <b>Jay Street</b><br>Tatman St. to Greenwood Park                                   | Street Resurfacing<br>Water Main Reconstruction    | 75%                      |

| <u><b>STREET</b></u>   | <u><b>TYPE OF WORK</b></u>                         | <u><b>% COMPLETE</b></u> |
|--|--|--------------------------|
| <b>Jeppson Avenue</b><br>Granville Ave. to Hillcroft Ave.  | Street Resurfacing<br>Water Service Reconstruction | 70%<br>100%              |
| <b>Julien Avenue</b><br>Massasoit Rd. W'ly to<br>End of Location                                 | Private Street Conversion                          | 100%                     |
| <b>Kelley Square</b><br>Entire   | Street Resurfacing                                 |                          |
| <b>Kendig Street (2)</b><br>College St. to 700' E of College St.                                 | Street Resurfacing<br>Water Service Reconstruction | 100%                     |
| <b>Kendrick Avenue</b><br>West Boylston St. to Claffey Ave.                                      | Street Resurfacing<br>Water Service Reconstruction | 100%                     |
| <b>Kinney Drive</b><br>Olean St. N & E to Olean St.  | Street Resurfacing                                 |                          |
| <b>Knollwood Drive</b><br>Rollingwood Dr. S'ly   | Street Resurfacing                                 |                          |
| <b>Lafayette Street</b><br>Between Harding St. & Millbury St.<br>Millbury St. to Southbridge St. | Street Resurfacing<br>Water Service Reconstruction | 70%<br>100%              |
| <b>Lamar Avenue</b><br>Grafton St. to Massasoit Rd.  | Street Resurfacing<br>Water Service Reconstruction | 100%                     |
| <b>Lansing Avenue</b><br>Holden St. to Grove St.   | Street Resurfacing<br>Water Service Reconstruction | 100%                     |
| <b>Lapierre Street</b><br>Plantation St. to Ridge St.  | Street Resurfacing<br>Water Main Reconstruction    | 75%                      |
| <b>Lawton Street</b><br>Massasoit Rd. E'ly   | Street Resurfacing<br>Water Service Reconstruction | 100%                     |

| <u>STREET</u>  | <u>TYPE OF WORK</u>                                       | <u>% COMPLETE</u> |
|--|---|-------------------|
| <b>Lee Street</b><br>Institute Rd. to Park                 | Co-Operative Patch  | 100%              |
| <b>Leeds Street</b><br>King Philip Rd. to Fales St.        | Street Resurfacing  |                   |
| <b>Lenora Street</b><br>Blackstone River Rd. S'ly          | Sewer Main Reconstruction                                 | 100%              |
| <b>Leon Street</b><br>Plantation St. to Ingleside Ave.     | Street Resurfacing<br>Water Service Reconstruction        | 100%              |
| <b>Library Lane</b><br>Vicinity Electric Box               | Sidewalk Reconstruction                                   |                   |
| <b>Lincoln Street</b><br>Corning Ave. to Plaza Entrance    | Co-Operative Patch  | 50%               |
| <b>Lincoln Street Improvements - Phase I - Rte. 70</b>     | Mass. Highway Dept. - Tip '08<br>Interviews Scheduled     | 60%               |
| <b>Lisbon Street</b><br>Englewood Ave. to Circuit Ave. E   | Sewer Main Reconstruction                                 | 100%              |
| <b>Lorenz Street</b><br>Beverly Rd. to Tylee Ave.          | Street Resurfacing<br>Water Service Reconstruction        | 100%              |
| <b>Loring Street</b><br>Huntington Ave. to Boardman St.    | Street Resurfacing  |                   |
| <b>Loudon Street</b><br>Main St. to Woodland St.           | Sewer Main Reconstruction<br>Water Service Reconstruction | 10%               |
| <b>Lovell Street</b><br>Vicinity 113-117                   | Sidewalk Reconstruction                                   | 100%              |
| <b>Lyford Street</b><br>Paine St. to End<br>Paine St. West | Street Resurfacing<br>Water Main Reconstruction           | 90%               |

| <u>STREET</u>   | <u>TYPE OF WORK</u>                                | <u>% COMPLETE</u> |
|---|--|-------------------|
| <b>Lynwood Lane</b><br>Lantern Ln. to Barry Rd.                                     | Street Resurfacing                                 |                   |
| <b>Main Street</b><br>At Harrington Corner<br>Vicinity 600 & Austin St. Side        | Sidewalk Reconstruction<br>Sidewalk Reconstruction | 100%<br>75%       |
| <b>Mann Street</b><br>Vicinity 8 & 10 (HCR)   | Sidewalk Reconstruction                            |                   |
| <b>Maplewood Road</b><br>Chamberlain Pkwy. to<br>Colonial Rd.                       | Street Resurfacing<br>Water Service Reconstruction | 100%              |
| <b>Marble Street</b><br>Main St. to Beaver St.                                      | Street Resurfacing<br>Water Main Replacement       | 10%               |
| <b>March Street</b><br>Orient St. to Plantation St.                                 | Street Resurfacing<br>Water Main Reconstruction    | 10%               |
| <b>Marion Avenue</b><br>Providence St. to Shannon St.                               | Street Resurfacing<br>Water Service Reconstruction | 20%<br>100%       |
| <b>Marjorie Street</b><br>Grafton St. to End of Pavement                            | Street Resurfacing                                 |                   |
| <b>Marshall Street</b><br>Shrewsbury St. to Wilson St.                              | Street Resurfacing                                 |                   |
| <b>MaryAnn Drive</b><br>Where Needed  | Sidewalk Reconstruction                            | 100%              |
| <b>Mason Street</b><br>Chandler St. to May St.                                      | Street Resurfacing                                 |                   |
| <b>Massachusetts Avenue</b><br>Salisbury St. to Drury Ln.                           | Water Main Clean & Line                            | 100%              |
| <b>Maxwell Street</b><br>Millbury St. to Maxwell Ct.<br>Maxwell Ct. to Henrietta St | Street Resurfacing<br>Street Resurfacing           |                   |

| <u><b>STREET</b></u>  | <u><b>TYPE OF WORK</b></u>  | <u><b>% COMPLETE</b></u> |
|---|---|--------------------------|
| <b>Mayflower Circle</b><br>Burncoat St. to End                  | Street Resurfacing  | 70%                      |
| <b>Mercury Drive</b><br>Vicinity 3                              | Sidewalk Reconstruction   |                          |
| <b>Miami Street</b><br>Nome Ave. to Carpenter Ave.              | Water Main Reconstruction   | 100%                     |
| <b>Michigan Road</b><br>Burncoat St. NE 811'                    | Street Resurfacing  | 100%                     |
| <b>Middlesex Avenue</b><br>Hamilton St. S'ly                    | Street Resurfacing  |                          |
| <b>Middlesex Avenue (#2)</b><br>Modoc St. to 200' S of Modoc St | Street Resurfacing  |                          |
| <b>Midland Street</b><br>Richardson Terr. to Newton Ave.        | Newton Sq. Sewer Replacement Project  | 100%                     |
| <b>Military Road</b><br>Salisbury St. to Metcalf St.            | Water Main Clean & Line   | 100%                     |
| <b>Millbury Street</b><br>Kelley Sq. to PNI Club                | MassDot - Canal District  |                          |
| <b>Millbury Street</b><br>Leland St. to Cliff St.               | Sewer Main Reconstruction   | 80%                      |
| <b>Millbury Street</b><br>Kelley Sq. to Canton St.              | Water Service Reconstruction  | 100%                     |
| <b>Millbury Street Reconstruction</b>                           | Route 146 Project   | 100% (design)            |
| <b>Minots Street</b><br>Emerson St. to Harrington Way           | Street Resurfacing<br>Water Main Reconstruction<br>Water Service Reconstruction | 75%<br>10%               |
| <b>Minthorne Street</b><br>Lovell St. to Englewood Ave.         | Water Main Clean & Line   | 100%                     |
| <b>Miscoe Road</b><br>Dolly Rd. to End                          | Street Resurfacing  |                          |

| <u>STREET</u>   | <u>TYPE OF WORK</u>                                | <u>% COMPLETE</u> |
|---|--|-------------------|
| <b>Modoc Street</b><br>Commonwealth Ave. to Boston Ave.     | Street Resurfacing                                 |                   |
| <b>Monterey Road</b><br>Burncoat St. to Bay State Rd.       | Street Resurfacing<br>Water Service Reconstruction | 20%<br>100%       |
| <b>Moore Avenue</b><br>High Ridge Rd. to Pleasant St.       | Street Resurfacing<br>Water Service Reconstruction | 50%<br>100%       |
| <b>Myrick Avenue</b><br>Toronita Ave. to 22 Myrick Ave.     | Water Main Clean & Line                            | 100%              |
| <b>Nathaniel Street</b><br>Grafton St. E'ly                 | Water Main Reconstruction                          | 100%              |
| <b>Nebraska Street</b><br>Muskeego Rd. to Camassa Terr.     | Private Street Conversion                          | 100%              |
| <b>Nevada Street</b><br>Howland Terr. to Monroe Ave.        | Co-Operative Patch                                 |                   |
| <b>Nevada Street</b><br>June St. to Howland Terr.           | Water Service Reconstruction                       | 100%              |
| <b>Newton Avenue</b><br>Newton Sq. to Midland St.           | Newton Sq. Sewer Replacement Project               | 100%              |
| <b>Normal Street</b><br>Prospect St. to Eastern Ave.        | Street Resurfacing                                 |                   |
| <b>Northampton Street</b><br>Lincoln St. E'ly               | Sewer Main Reconstruction                          | 100%              |
| <b>Northampton Street</b><br>Westminster St. to Windsor St. | Water Service Reconstruction                       | 100%              |
| <b>North Main Street Gateway</b>                            | Mass. Highway Dept. - Tip '05                      |                   |
| <b>Norton Street</b><br>Lincoln St. to End                  | Street Resurfacing                                 |                   |

| <b><u>STREET</u></b>   | <b><u>TYPE OF WORK</u></b>                             | <b><u>% COMPLETE</u></b> |
|--|--|--------------------------|
| <b>Oak Hill Road</b><br>Flagg St. to 999' N of Flagg St.                         | Street Resurfacing<br>Water Service Reconstruction     | 10%                      |
| <b>Oakhurst Street</b><br>Plantation St. to Oakview St.                          | Street Resurfacing                                     | 70%                      |
| <b>Olga Avenue</b><br>Belmont St. to Vinson St.                                  | Sewer Main Reconstruction<br>Water Main Reconstruction | 50%                      |
| <b>Oliver Street</b><br>Beaver St. to Park Ave.                                  | Street Resurfacing                                     |                          |
| <b>Onset Street</b><br>Pinehill Rd. to End of Location                           | Private Street Conversion                              | 50% (design)             |
| <b>Orne Street</b><br>Paine St. to Lincoln St.                                   | Street Resurfacing                                     | 70%                      |
| <b>Otsego Road</b><br>Vicinity 36  | Sidewalk Reconstruction                                |                          |
| <b>Oxford Street</b><br>Vicinity 15  | Sidewalk Reconstruction                                |                          |
| <b>Paine Street</b><br>Perkins St. to Harlow St.<br>Frederick St. to Perkins St. | Street Resurfacing<br>Street Resurfacing               | 100%<br>100%             |
| <b>Parker Street</b><br>Mason St. to Park Ave.                                   | Street Resurfacing                                     |                          |
| <b>Pattison Street</b><br>Arlington St. to Fox St.                               | Water Main Reconstruction                              | 100%                     |
| <b>Pembroke Street</b><br>Park Ave. to Dewey St.                                 | Co-Operative Patch                                     | 70%                      |
| <b>Penobscot Street</b><br>Wilbur St. to Arrowsic St.                            | Private Street Conversion<br>Water Main Installation   | 50% (design)<br>15%      |
| <b>Phoebe Way</b><br>Myrick Ave. to Lantern Ln.                                  | Water Main Clean & Line                                | 100%                     |

| <u><b>STREET</b></u>   | <u><b>TYPE OF WORK</b></u>   | <u><b>% COMPLETE</b></u> |
|--|--|--------------------------|
| <b>Piedmont Street</b><br>Chandler St. to Pleasant St.                           | Street Resurfacing   | 100%                     |
| <b>Pilgrim Avenue</b><br>Dell Ave. to Dartmouth St.<br>Hamilton St. to Dell Ave. | Street Resurfacing<br>Water Main Reconstruction                              | 100%                     |
| <b>Pine Tree Lane</b><br>Sun Valley Dr. to Pine Tree Dr.                         | Street Resurfacing   |                          |
| <b>Plantation Street</b><br>Grafton St. to Hamilton St.                          | Street Resurfacing   |                          |
| <b>Pleasant Street</b><br>Newton Ave. to Norman Ave.<br>Vicinity 823             | Newton Sq. Sewer Replacement Project<br>Sidewalk Reconstruction              | 70%                      |
| <b>Pond Street</b><br>Green St. to Water St.                                     | Street Resurfacing   | 100%                     |
| <b>Preston Street</b><br>Murray Ave. to Jaques Ave.                              | Sewer Main Reconstruction<br>Street Resurfacing<br>Water Main Reconstruction | 25%                      |
| <b>Primrose Street</b><br>Alameda Rd. to Stoneham Rd.                            | Street Resurfacing<br>Water Main Reconstruction                              | 75%                      |
| <b>Prospect Street</b><br>Eastern Ave. to E. Shelby St.                          | Street Resurfacing   | 50%                      |
| <b>Providence Street</b><br>#82 to Pattison St.                                  | Co-Operative Patch   | 100%                     |
| <b>Purchase Street</b><br>Vicinity 76  | Sidewalk Reconstruction  | 100%                     |
| <b>Queen Street</b><br>Jaques Ave. to Chandler St.                               | Co-Operative Patch   | 100%                     |
| <b>Quissett Street</b><br>Zenith Dr. S for 559'                                  | Street Resurfacing   |                          |

| <b><u>STREET</u></b>   | <b><u>TYPE OF WORK</u></b>  | <b><u>% COMPLETE</u></b> |
|--|---|--------------------------|
| <b>Reeves Street</b><br>Millbury St. W & N to Whipple St.                    | Street Resurfacing  |                          |
| <b>Rena Street</b><br>Belmont St. to Wigwam Ave.                             | Street Resurfacing<br>Water Service Reconstruction                              | 100%                     |
| <b>Rice Lane</b><br>Dorchester St. 254' S of<br>Dorchester St.               | Street Resurfacing  |                          |
| <b>Richmond Avenue</b><br>Pleasant St. to Flagg St.<br>Lull St. to Flagg St. | Street Resurfacing<br>Water Main Replacement                                    | 90%                      |
| <b>Rob Roy Road</b><br>Morningside Rd. to Havelock Rd.                       | Street Resurfacing<br>Water Service Reconstruction                              | 100%                     |
| <b>Rodney Street</b><br>Belmont St. to Breck St.                             | Sewer Main Reconstruction<br>Street Resurfacing<br>Water Service Reconstruction | 50%<br>10%               |
| <b>Rollinson Road</b><br>Vicinity 35   | Sidewalk Reconstruction   | 100%                     |
| <b>Rosemary Street</b><br>Montgomery Ave. to Athens St.                      | Street Resurfacing  |                          |
| <b>Route. 122 Over Rte. 20</b>   | Mass. Highway Dept. - Tip '06   |                          |
| <b>Roxbury Street</b><br>William St. to Highland St.                         | Street Resurfacing<br>Water Service Reconstruction                              | 100%                     |
| <b>Rural Street</b><br>Sunderland Rd. N'Iy                                   | Water Main Reconstruction   | 100%                     |
| <b>Rutland Terrace</b><br>Salisbury St. to Drury Ln.                         | Water Main Clean & Line   | 100%                     |

| <u>STREET</u>  | <u>TYPE OF WORK</u>                                | <u>% COMPLETE</u> |
|--|--|-------------------|
| <b>Salisbury Street</b><br>Lancaster St. to Lincoln St.    | Gateway North Project<br>Street Resurfacing        |                   |
| Park Ave. to Forest St.                                    | Water Main Clean & Line                            | 100%              |
| Forest St. to Beechmont St.                                | Water Main Clean & Line                            | 100%              |
| <b>Schussler Street</b><br>Highland St. to Institute Rd.   | Street Resurfacing                                 |                   |
| <b>Scott Street</b><br>Lamartine St. to Lafayette St.      | Street Resurfacing                                 |                   |
| <b>Scrimgeour Road</b><br>West Boylston St. to Proctor St. | Street Resurfacing<br>Water Service Reconstruction | 10%               |
| <b>Sears Island Drive</b><br>House #120 to End             | Street Resurfacing                                 |                   |
| <b>Shannon Street</b><br>Dorchester St. to Marion Ave.     | Street Resurfacing                                 | 20%               |
| <b>Shattuck Street</b><br>Uxbridge St. to Lincoln St.      | Water Service Reconstruction                       | 10%               |
| <b>Shirley Street</b><br>Park Ave. to Florence St.         | Street Resurfacing                                 |                   |
| <b>Somerset Street</b><br>William St. to Highland St.      | Street Resurfacing<br>Water Service Reconstruction | 100%              |
| <b>Sorrento Street</b><br>Grenada St. to End               | Street Resurfacing<br>Water Service Reconstruction | 100%              |
| <b>Southgate Street</b><br>At Railroad Bridge              | Sewer Main Reconstruction                          |                   |
| <b>South Harlem Street</b><br>Harlem St. to Whitney St.    | Street Resurfacing                                 |                   |

| <b><u>STREET</u></b>   | <b><u>TYPE OF WORK</u></b>   | <b><u>% COMPLETE</u></b> |
|--|--|--------------------------|
| <b>Southold Road</b><br>Greenwood St. to 1,076' W of<br>Greenwood St.  | Street Resurfacing   |                          |
| <b>South Lenox Street</b><br>Chamberlain Pkwy. to Colonial Rd.   | Street Resurfacing<br>Water Service Reconstruction                             | 100%                     |
| <b>South Ward Street</b><br>Ward St. SW across Harlem St.  | Street Resurfacing<br>Water Service Reconstruction                             | 100%                     |
| <b>St. Nicholas Avenue</b><br>Country Club Blvd. to Halcyon Dr.  | Street Resurfacing   | 100%                     |
| <b>Standish Street</b><br>Hamilton St. to #12  | Co-Operative Patch   | 100%                     |
| <b>Stoneham Road</b><br>Massasoit Rd. to Greencourt St.  | Street Resurfacing   |                          |
| <b>Summerhill Avenue</b><br>West Boylston St. to Claffey Ave.  | Street Resurfacing<br>Water Service Reconstruction                             | 100%                     |
| <b>Sunderland Road</b><br>Vicinity 101<br>Grafton St. to Lake Ave.   | Guardrail<br>Sewer Main Reconstruction   | 60%                      |
| <b>Sylvan Street</b><br>Main St. to Seminole St.   | Water Main Reconstruction  | 100%                     |
| <b>Syme Street</b><br>Vernon St. to End  | Street Resurfacing   |                          |
| <b>Tahanto Road</b><br>Chamberlain Pkwy. to Colonial Rd.   | Street Resurfacing   |                          |
| <b>Temple Street</b><br>Grafton St. to Harding St.<br>Harding St. to Green St.<br>Harding St. to Grafton St. | MassDOT - Canal District<br>Street Resurfacing<br>Water Service Reconstruction | 100%                     |
| <b>Tennyson Street</b><br>Davenport St. E & S to Whipple St.   | Street Resurfacing   | 70%                      |

| <u><b>STREET</b></u>                                      | <u><b>TYPE OF WORK</b></u>                          | <u><b>% COMPLETE</b></u> |
|---|---|--------------------------|
| <b>Thenius Street</b><br>Stebbins St. to Snyder Ct.       | Street Resurfacing                                  | 60%                      |
| <b>Tirrell Street</b><br>Main St. to Freeland St.         | Street Resurfacing                                  |                          |
| <b>Tiverton Parkway</b><br>Pleasant St. N                 | Street Resurfacing                                  | 90%                      |
| <b>Toronita Avenue</b><br>Pelican Ave. to Myrick Ave.     | Water Main Clean & Line                             | 100%                     |
| <b>Tower Street</b><br>Huntington Ave. to Hastings Ave.   | Street Resurfacing                                  |                          |
| <b>Townsend Street</b><br>Park Ave. to Russell St.        | Street Resurfacing                                  |                          |
| <b>Tracy Place</b><br>Seneca St. E & N to RR Tracks       | Water Main Reconstruction                           | 100%                     |
| <b>Trenton Street</b><br>Massasoit Rd. to End             | Street Resurfacing                                  |                          |
| <b>Turnin Road</b><br>Plantation St. to Ancona Rd.        | Street Resurfacing<br>Water Main Reconstruction     | 75%                      |
| <b>Tylee Avenue</b><br>Darling St. to Darby St.           | Street Resurfacing<br>Water Service Reconstruction  | 75%                      |
| <b>Tyson Road</b><br>West Boylston St. to Burncoat St.    | Private Street Conversion<br>Water Main Replacement | 10% (const)<br>100%      |
| <b>Union Street</b><br>School St. N'ly                    | Street Resurfacing                                  |                          |
| <b>Upsala Street</b><br>Vicinity 72 on Astrid Ave.        | Sidewalk Reconstruction                             |                          |
| <b>Uxbridge Street</b><br>Greenhill Pkwy. to Shaffner St. | Street Resurfacing                                  | 70%                      |

| <u>STREET</u>   | <u>TYPE OF WORK</u>                                      | <u>% COMPLETE</u> |
|---|--|-------------------|
| <b>Vassar Street</b><br>Amherst St. to Fenwick St.  | Street Resurfacing<br>Water Service Reconstruction       | 100%              |
| <b>Ventura Road</b><br>Imperial Rd. to Granby Rd.   | Street Resurfacing                                       | 70%               |
| <b>Venus Drive</b><br>Grove St. to Mercury Dr.  | Street Resurfacing<br>Water Service Reconstruction       | 100%              |
| <b>Vernon Street</b><br>#244 - #246   | Street Resurfacing                                       |                   |
| <b>Village Street</b><br>Plantation St. to Ingleside Ave.   | Street Resurfacing<br>Water Service Reconstruction       | 100%              |
| <b>Villanova Street</b><br>Franklin St. to Orient St.   | Water Service Reconstruction                             | 10%               |
| <b>Vincent Avenue</b><br>Circuit Ave. N to<br>Circuit Ave. S  | Street Resurfacing                                       | 70%               |
| <b>Vinson Street</b><br>Rodney St. to Olga Ave<br>Public Portion;<br>Eastern Ave. to Greenhill Park | Street Resurfacing<br>Water Service Reconstruction       | 50%<br>100%       |
| <b>Vinton Street</b><br>Lincoln St. to New St.  | Street Resurfacing                                       |                   |
| <b>Walter Street</b><br>Moreland St. to Paradox Dr.   | Street Resurfacing                                       | 70%               |
| <b>Washburn Street</b><br>Southbridge St. to Cambridge St.  | Street Resurfacing                                       |                   |
| <b>Water Street</b><br>Grafton St. to Kelley Sq.  | MassDot - Canal District<br>Water Service Reconstruction | 100%              |
| <b>Webster Street</b><br>Cambridge St. to Auburn Town Line  | Street Resurfacing                                       |                   |

| <u>STREET</u>  | <u>TYPE OF WORK</u>  | <u>% COMPLETE</u> |
|--|--|-------------------|
| <b>West Street</b><br>East and West Sides from<br>Cedar St. to William St.                         | Sidewalk Reconstruction  | 100%              |
| <b>West Boylston Street</b><br>At Whitmarsh Avenue<br>At Vendora Rd.<br>Neponset St. to State Road | Sewer Main Reconstruction<br>Sidewalk Reconstruction<br>Street Resurfacing | 100%<br><br>55%   |
| <b>West Oberlin Street</b><br>Park Ave. to Dewey St.   | Street Resurfacing   |                   |
| <b>Westport Road</b><br>Chester Terr. N & S  | Street Resurfacing   |                   |
| <b>Wheeler Avenue</b><br>Forest St. E & W  | Sewer Main Construction  |                   |
| <b>Whipple Street</b><br>#24 - #32   | Co-Operative Patch   | 100%              |
| <b>Whitmarsh Avenue</b><br>West Boylston St. to Leeds St.<br>Vicinity 26                           | Sewer Main Reconstruction<br>Sidewalk Reconstruction                       | 100%<br>100%      |
| <b>Whitney Street</b><br>Harlem St. to S. Harlem St.   | Street Resurfacing   |                   |
| <b>Winfield Street</b><br>Park Ave. to Mason St.   | Street Resurfacing   |                   |
| <b>Winter Street</b><br>Grafton St. to Harding St.<br>Harding St. to Grafton St.                   | MassDot - Canal District<br>Water Service Reconstruction                   | 100%              |
| <b>Winthrop Street</b><br>Endicott St. to Granite St.  | Winthrop St. Roadway Improvement   |                   |
| <b>Winter Hill Drive</b><br>Parkton Ave. to Lansing Ave.   | Street Resurfacing   |                   |
| <b>Woodcliffe Avenue</b><br>Dupuis Ave. to End   | Private Street Conversion  | 100%              |

| <u>STREET</u>  | <u>TYPE OF WORK</u>                                | <u>% COMPLETE</u> |
|--|--|-------------------|
| <b>Woodland Street</b><br>Oberlin St. to Downing St.<br>May St. to Oberlin St. | Street Resurfacing<br>Water Service Reconstruction | 100%              |
| <b>Wrentham Road</b><br>Pleasant St. to 100' N of Modred Ct.                   | Street Resurfacing                                 |                   |
| <b>Zoar Street</b><br>Dupuis Ave. to Julien Ave.                               | Private Street Conversion                          | 100%              |

## SECTION 2

| <u>STREET</u>  | <u>TYPE OF WORK</u>  | <u>% COMPLETE</u> |
|--|--|-------------------|
| <b>Arline Street</b><br>Whipple St. to Public          | Private Street Conversion                                    |                   |
| <b>Barnard Road</b><br>At Burncoat Terrace             | Guardrail  |                   |
| <b>Belmont Street</b>                                  | Mass. Highway Dept. Tip '07<br>Phase II - McRae Ct. to I-290 | 25% (design)      |
| <b>Bullard Avenue</b><br>Wayside Rd. to Chino Ave.     | Private Street Conversion                                    | 100% (survey)     |
| <b>Chicopee Street</b><br>Glendale St. N'ly            | Private Street Conversion                                    | 100% (design)     |
| <b>Corrine Street</b><br>Grafton St. to Sunderland St. | Private Street Conversion                                    |                   |
| <b>Danvers Street</b><br>Sunderland Rd. S'ly           | Private Street Conversion                                    |                   |
| <b>Dayton Place</b><br>Dayton St. to End               | Private Street Conversion                                    |                   |
| <b>Dixfield Street</b><br>Public to Penobscot St.      | Private Street Conversion                                    | 75% (survey)      |
| <b>Gateway I</b><br>Quinsigamond Avenue                | Mass. Highway Dept.<br>In Design Tip '09                     | 100% (design)     |
| <b>Grafton Street</b><br>At Acton Street               | Guardrail  |                   |
| <b>Grafton Street</b><br>At 627                        | Guardrail  |                   |
| <b>Harding Street &amp; Franklin Street</b>            | Mass. Highway Dept.<br>In Design Tip '05                     | 75% (design)      |
| <b>Heroult Road</b><br>Marconi Rd. to Delaval Rd.      | Private Street Conversion                                    |                   |

| <b><u>STREET</u></b>                                      | <b><u>TYPE OF WORK</u></b>    | <b><u>% COMPLETE</u></b> |
|---|-------------------------------|--------------------------|
| <b>Holden Street</b><br>Drummond Ave. to Shore Dr.        | Mass. Highway Dept. - Tip '09 |                          |
| <b>June Street</b><br>At 401                              | Guardrail                     |                          |
| <b>Lake Avenue</b><br>Belmont St. to Sunderland Rd.       | Mass. Highway Dept. - Tip '08 |                          |
| <b>Lenora Street</b><br>Millbury St. to Dexter St.        | Private Street Conversion     |                          |
| <b>Ludlow Street</b><br>At 9                              | Guardrail                     |                          |
| <b>Main Street</b><br>Pleasant St. to School St.          | Mass Highway Dept. - Tip '07  |                          |
| <b>Main Street</b><br>Signal Improvements                 | Mass. Highway Dept. - Tip '09 |                          |
| <b>Merchant Street</b><br>Main St. to Apricot St.         | Private Street Conversion     | 100% (survey)            |
| <b>Monticello Drive</b><br>Delawanda Dr. to End of Public | Private Street Conversion     |                          |
| <b>Myrick Avenue</b><br>Toronita Ave. E'ly                | Private Street Conversion     |                          |
| <b>Norfolk Street</b><br>At 99                            | Guardrail                     |                          |
| <b>Pelican Avenue</b><br>Toronita Ave. to Phoebe Way      | Private Street Conversion     |                          |
| <b>Penobscot Street</b><br>Wilbur St. to Arrowsic St.     | Private Street Conversion     | 75% (survey)             |
| <b>Pineland Avenue</b><br>Hara St. to Pinecrest Dr.       | Private Street Conversion     |                          |
| <b>Pleasant Street</b><br>At 996                          | Guardrail                     |                          |

| <u><b>STREET</b></u>   | <u><b>TYPE OF WORK</b></u>    | <u><b>% COMPLETE</b></u>       |
|--|-------------------------------|--------------------------------|
| <b>Prouty Lane</b><br>At 78                                    | Guardrail                     |                                |
| <b>Providence Street</b><br>At Vernon Hill School - 7 Bollards | Guardrail                     |                                |
| <b>Quinsigamond Village Bike Spur</b>                          | In Design - TIP               |                                |
| <b>Rte. 122 - Grafton Street</b><br>Rice Sq. to Washington Sq. | Mass. Highway Dept. - Tip '09 | Design to start<br>Spring 2010 |
| <b>Rustic Drive</b><br>280'                                    | Guardrail                     |                                |
| <b>Stark Road</b><br>Mower St. NW                              | Private Street Conversion     |                                |
| <b>Sunderland Road</b><br>At 29                                | Guardrail                     |                                |
| <b>Thayer Street</b><br>At Beaver Brook Parkway                | Guardrail                     |                                |
| <b>Vermont Avenue</b><br>Sherer Trail to Paris Ave.            | Private Street Conversion     |                                |
| <b>Yukon Avenue</b><br>Pasadena Pkwy. to Erie Ave.             | Private Street Conversion     | 100% (survey)                  |

MJC/eah  
[quarterly]