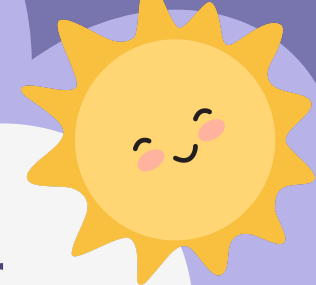


# **Guidance for Families Through the Infant Formula Shortage**





- If you are a WIC participant having trouble finding formula included in your package contact your local WIC office or call the 1-800 number located on the back of your WIC card. For the Worcester WIC office call 508-796-7000.
- Call the **Worcester Family Resource Center at 508-796-1411** to be connected with local baby formula resources.
- Check smaller corner stores, pharmacies, or local food pantries who may still have a supply of your formula.
- Call your OBGYN, Pediatrician, or Family Doctor to see if they have in-office samples or can suggest a similar formula that may be more readily available in stores and is nutritionally similar to your infant's typical formula.
- You should not water down formula, try to make formula at home, or use toddler formula to feed infants. Don't discard formula unless it is expired or is part of the recall.
- When mixing formula only mix what the baby will eat for the feeding to minimize waste



Visit the resources listed  
below by scanning the QR  
codes :

**Women, Infants, & Children Nutrition Program | Mass.gov**

[www.mass.gov/orgs/women-infants-children-nutrition-program](http://www.mass.gov/orgs/women-infants-children-nutrition-program)



**Department of Health & Human Services  
Fact Sheet: Helping Families Find Formula During the  
Infant formula shortage**

[www.hhs.gov/formula/index.html](http://www.hhs.gov/formula/index.html)



**With the baby formula shortage, what should I do if I can't  
find any? - HealthyChildren.org**

[www.healthychildren.org/English/tips-tools/ask-the-pediatrician/Pages/Are-there-shortages-of-infant-formula-due-to-COVID-19.aspx](http://www.healthychildren.org/English/tips-tools/ask-the-pediatrician/Pages/Are-there-shortages-of-infant-formula-due-to-COVID-19.aspx)



The City of  
**WORCESTER**  
Public Health



WORCESTER STATE UNIVERSITY  
LATINO EDUCATION INSTITUTE