



# The Future of Endicott and Bigelow Streets

The City of Worcester is launching a project to make Bigelow and Endicott Streets in the Green Island neighborhood safer, more sustainable and more accessible for everyone.



**Community Meeting #1 - November 17, 2022 - PNI Club**

<https://www.worcesterma.gov/mobility/planning/future-of-endicott-and-bigelow-streets>



# Meet our team



**Michael Easler**

Project Landscape  
Architect

Weston & Sampson



**John Odell**

Chief

Department of  
Sustainability &  
Resilience



**Gregory J. Baker**

Director

Neighborhood  
Development Division



**Stephen S. Rolle**

Commissioner

Department of  
Transportation and  
Mobility



**Luba Zhaurova**

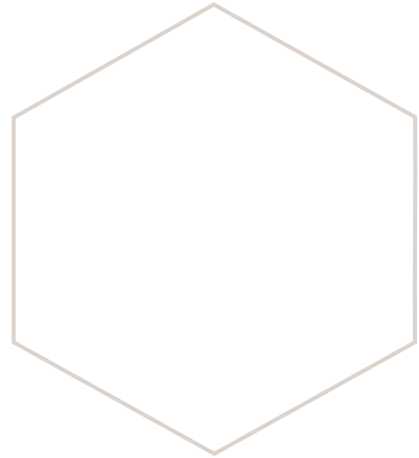
Director of Projects

Department of  
Sustainability &  
Resilience

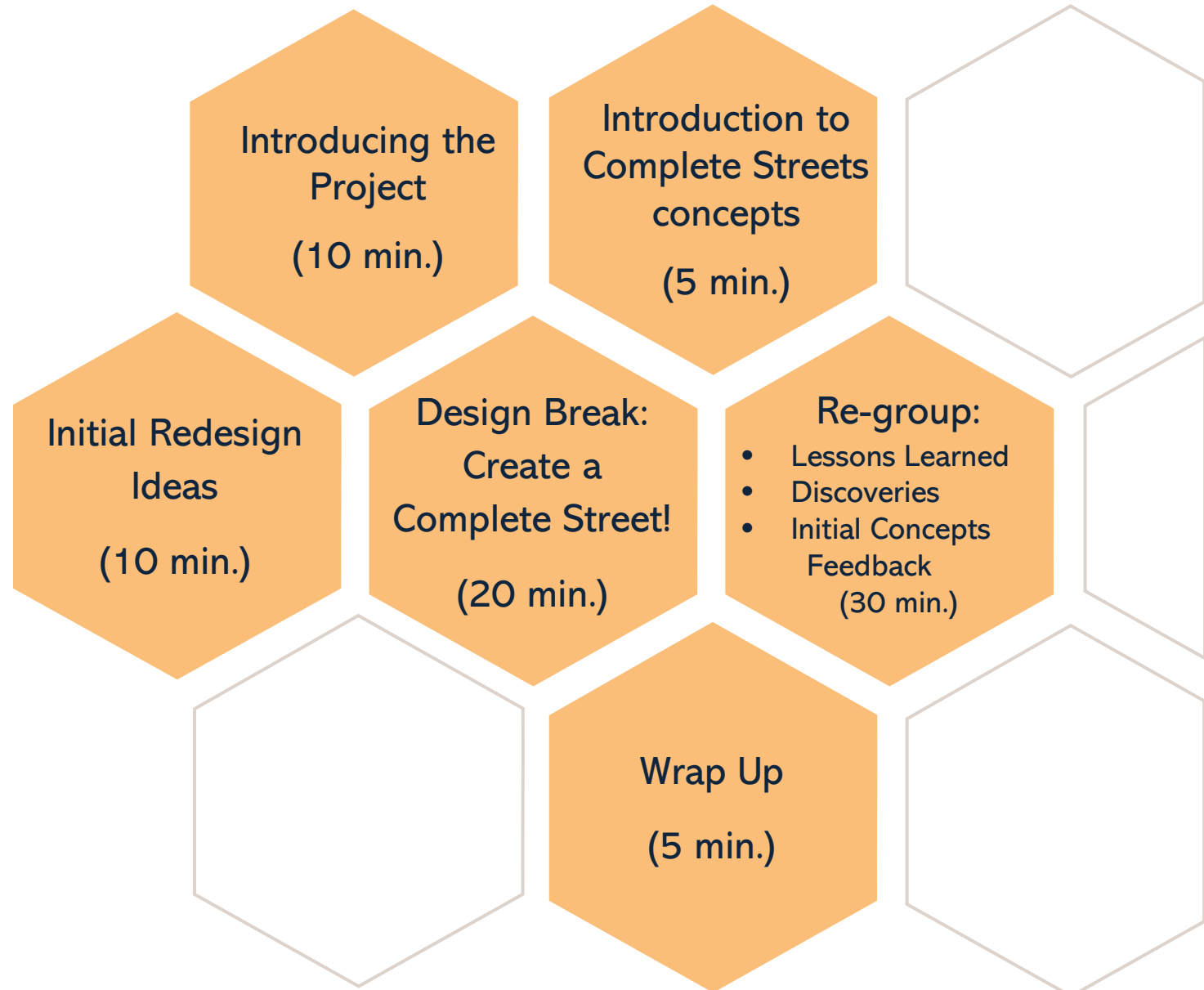
# Stakeholders & Introductions

- Green Island Community
- Weston & Sampson - Designer
- City of Worcester
  - Economic Development-Neighborhoods Division
  - Department of Public Works and Parks
  - Department of Sustainability and Resilience
  - Department of Transportation and Mobility





# Tonight's Schedule



# Endicott and Bigelow Streets

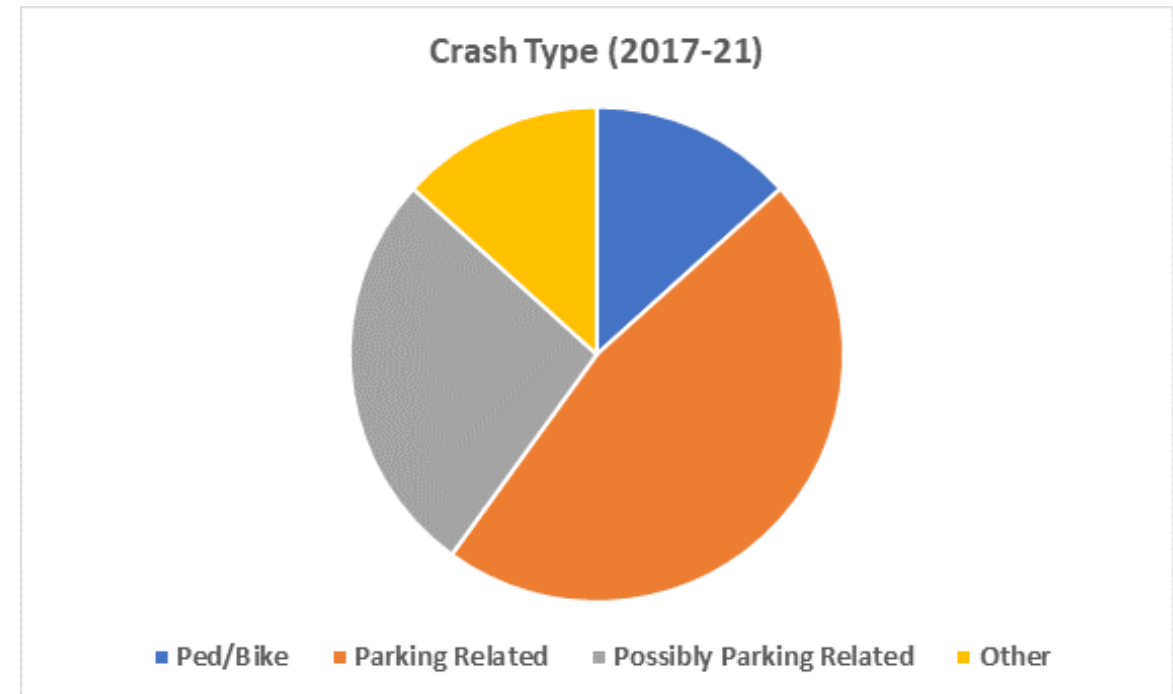
Endicott Street and Bigelow Street are local residential streets that provide important links between the Green Island Neighborhood, Crompton Park and the rest of the City.





# Statement of Needs

- **Safety:** The segment averages 3 crashes per year:
  - 13% of crashes involve pedestrians or bikes.
  - As many as 74% of crashes are believed to be related to on-street parking.
- **Bicycle Accommodations:** There are no accommodations for bicycles, despite connecting to the bike network at either end.
- **Climate Resilience:** The neighborhood is prone to both flooding and intense summer heat due to an abundance of paved surfaces and little vegetation.



# Project Goals

Based on the Green Worcester Plan and Worcester's Complete Streets policy, the City will develop, with community input, design changes to make these streets:

- Safer
- More sustainable
- More accessible for everyone:
  - Driving
  - Walking
  - Biking
  - Using assisted mobility devices



# Project Objectives

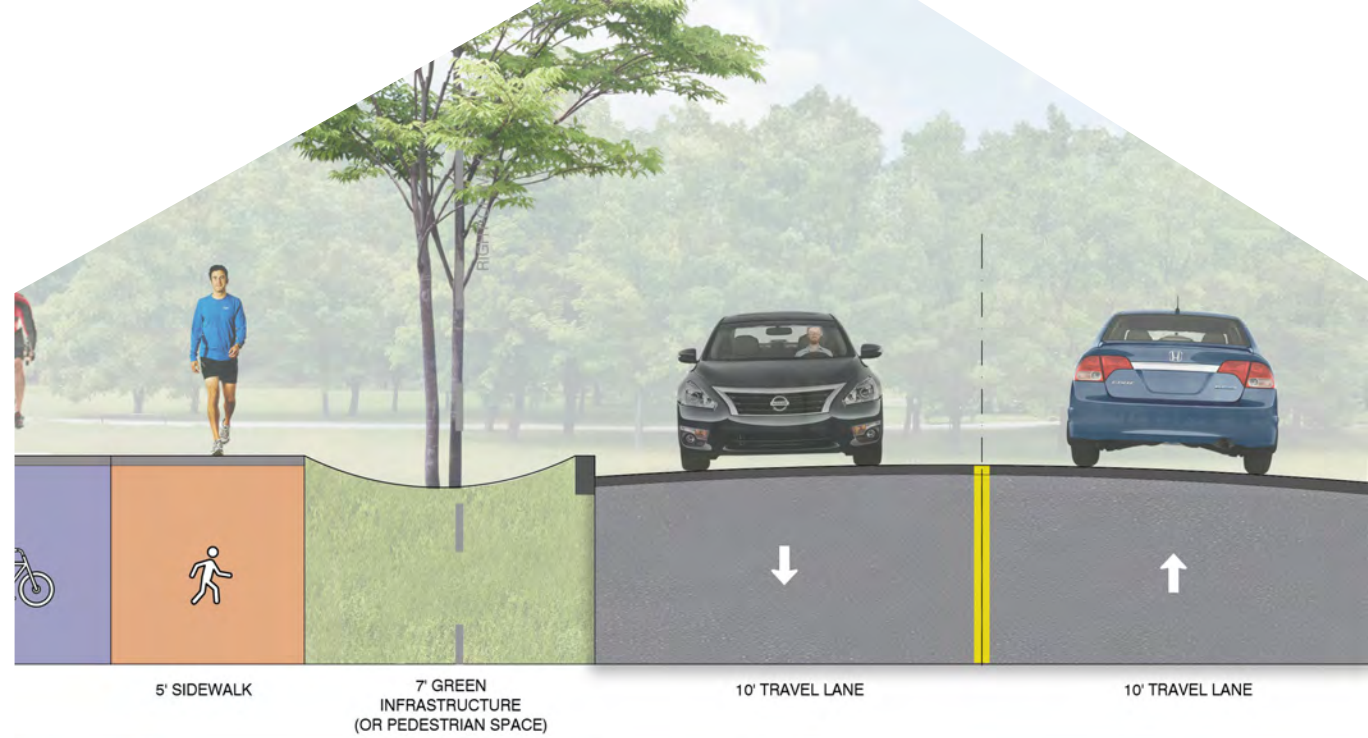
- Increase safety for ALL modes of traffic.
- Retain on-street parking for residents, properties, and park visitors
- Reduce crashes
- Improve and Expand sidewalks
- Provide better access to Crompton Park
- Provide safe and comfortable bicycle accommodations
- Improve ADA access and accommodations
- Improve aesthetics
- Reduce urban heat island effects
- Reduce impact to area flooding
- Use this project to inform other projects throughout the city





# What are Complete Streets?

- Safe
- Accessible
- Connected
- Multi-functional



# Safe for Vehicles

- Clear sightlines
- Slower vehicle speeds
- Slowing speeds at the intersections
- Well indicated vehicle spaces for cars and bicycles



# Safe for Pedestrians

- Shorter pedestrian crossings
- Expanded sidewalk space
- Clear views at crossings
- Slower vehicle speeds
- Pedestrian Amenities

(when possible)



# Accessible, Multi-Modal, & Connected

- Room for cars, bicycles, and pedestrians
- Clear and separate spaces
- Better connectivity to existing routes
- Access to Bus routes (Harding Street)



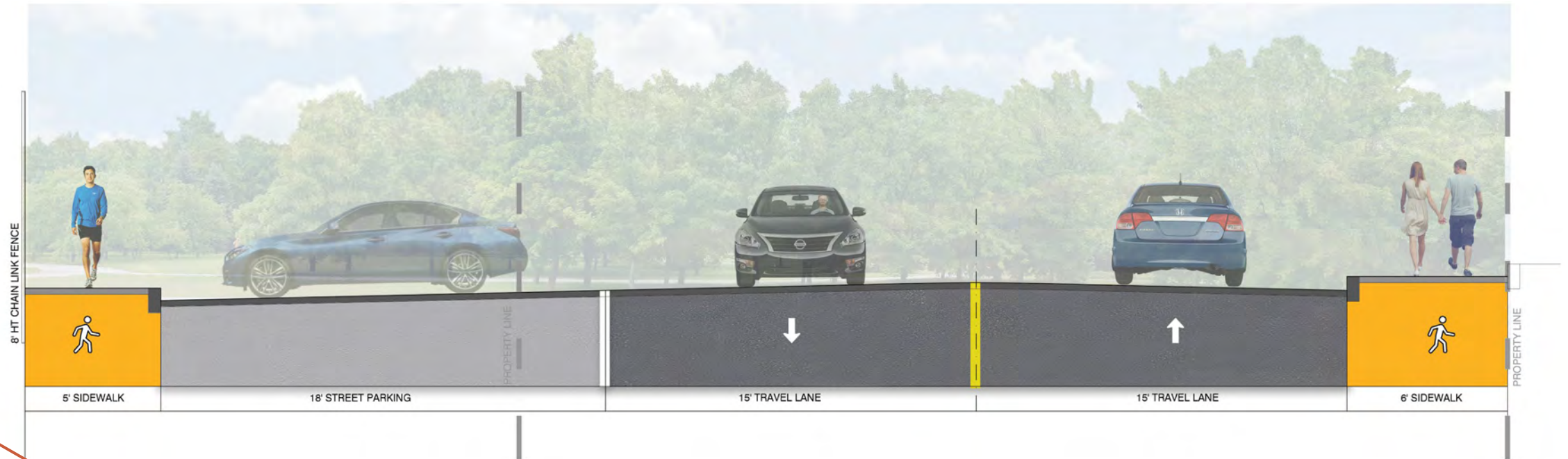
# Sustainable & Resilient

- Increase shading from Street Trees
- Reduce stormwater runoff using green infrastructure
- Increase buffer space



# Initial Redesign Ideas: Endicott Street

## Existing Conditions



# Idea 1

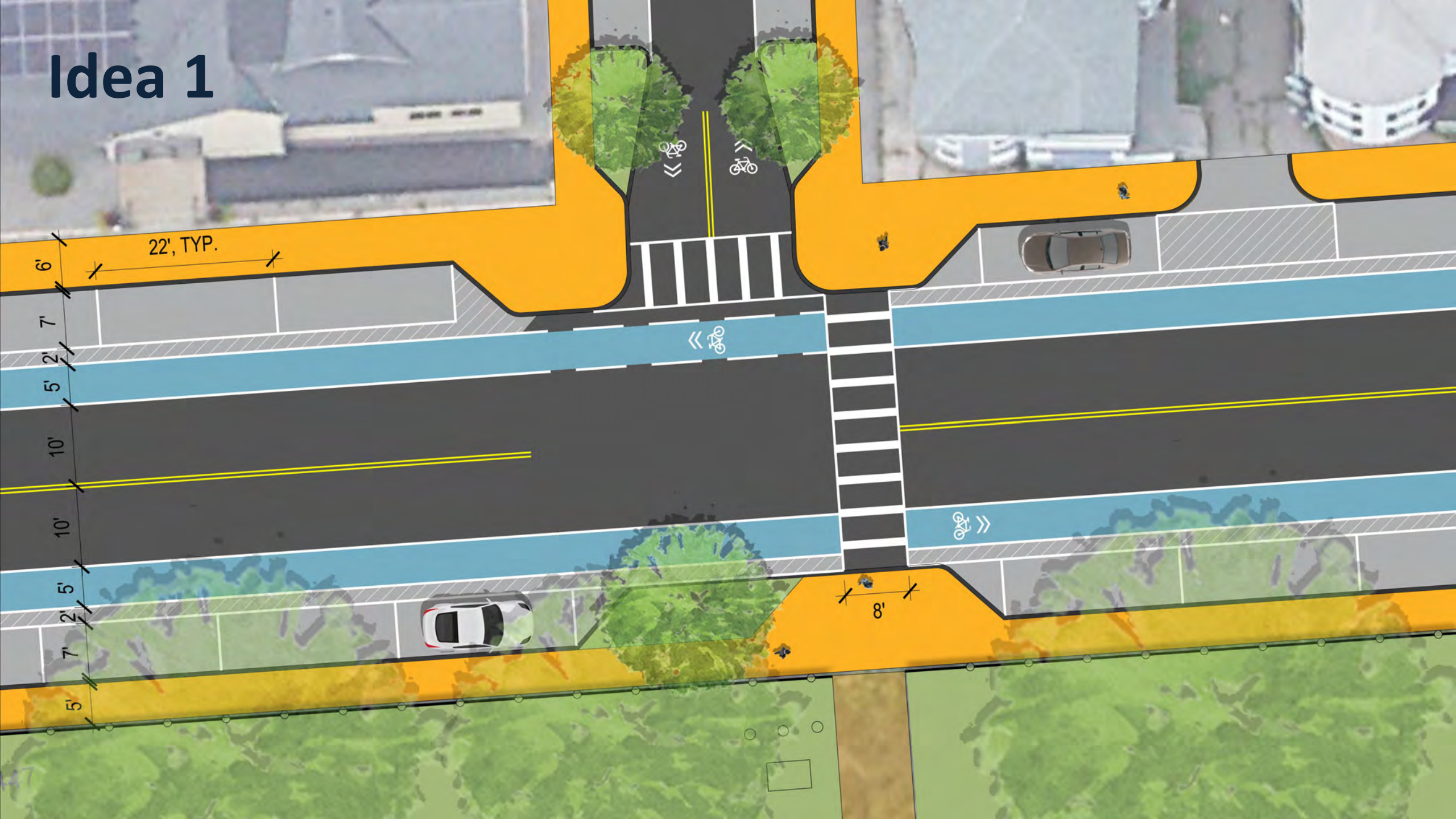
## Separated on-street bike lanes Pedestrian and green space bump-outs



## Separated on-street bike lanes Parallel parking



# Idea 1





# Idea 2

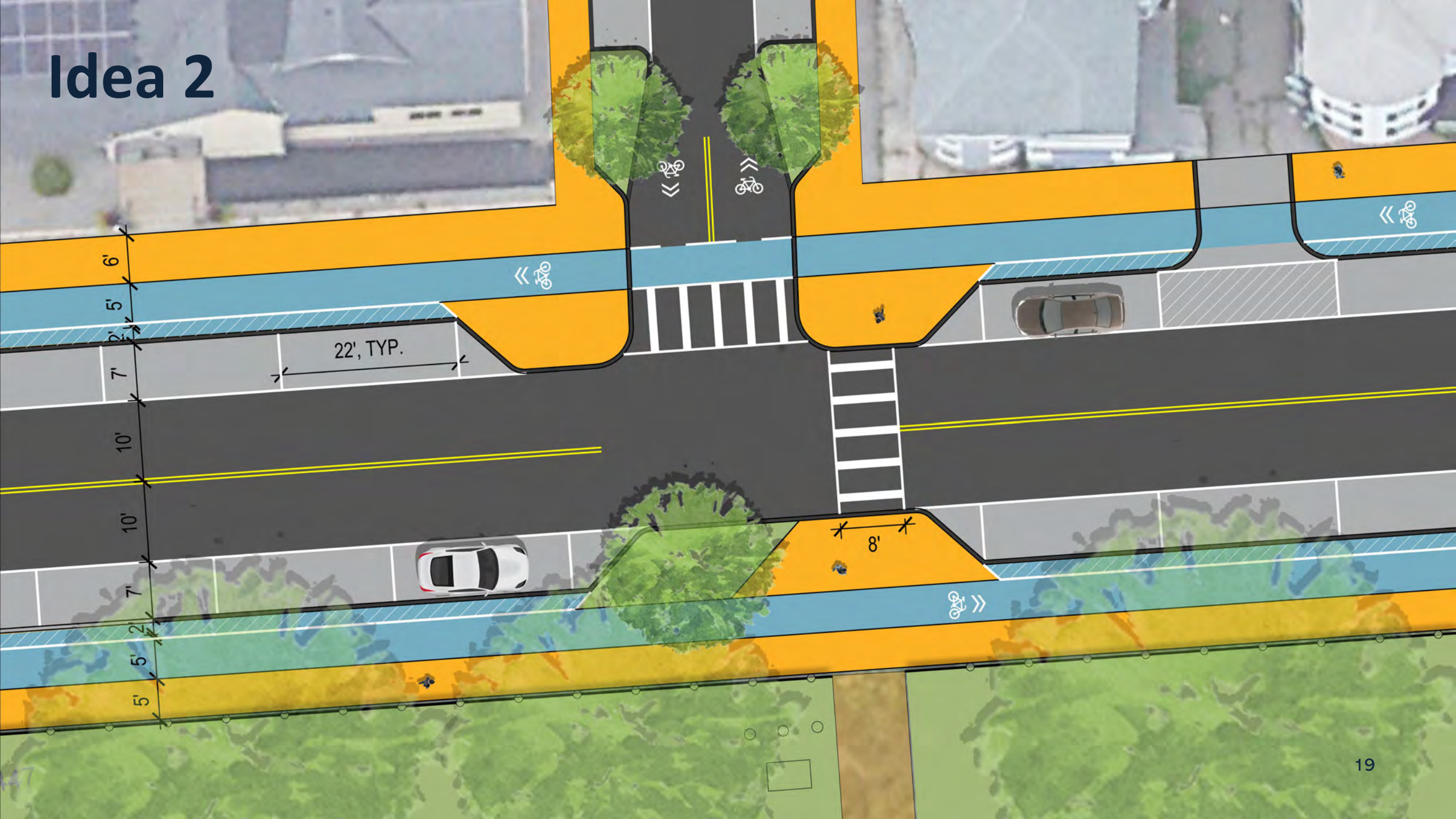
## Bike track beside expanded pedestrian spaces Pedestrian and green space bump-outs



## Bike track beside expanded pedestrian spaces Parallel parking



# Idea 2



# Idea 3

## Two-way bike track beside expanded pedestrian spaces Pedestrian and green space bump-outs



## Two-way bike track beside expanded pedestrian spaces Parallel parking

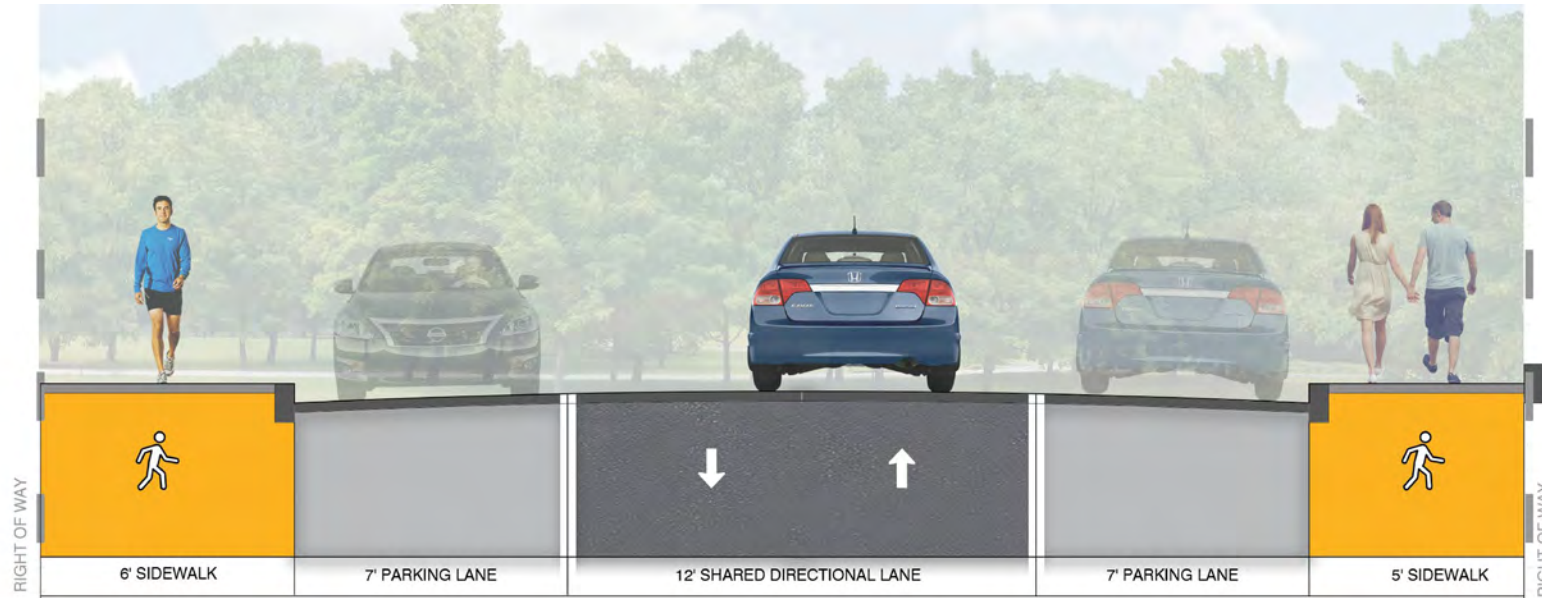


# Idea 3



# Initial Redesign Idea: Bigelow Street

Existing conditions



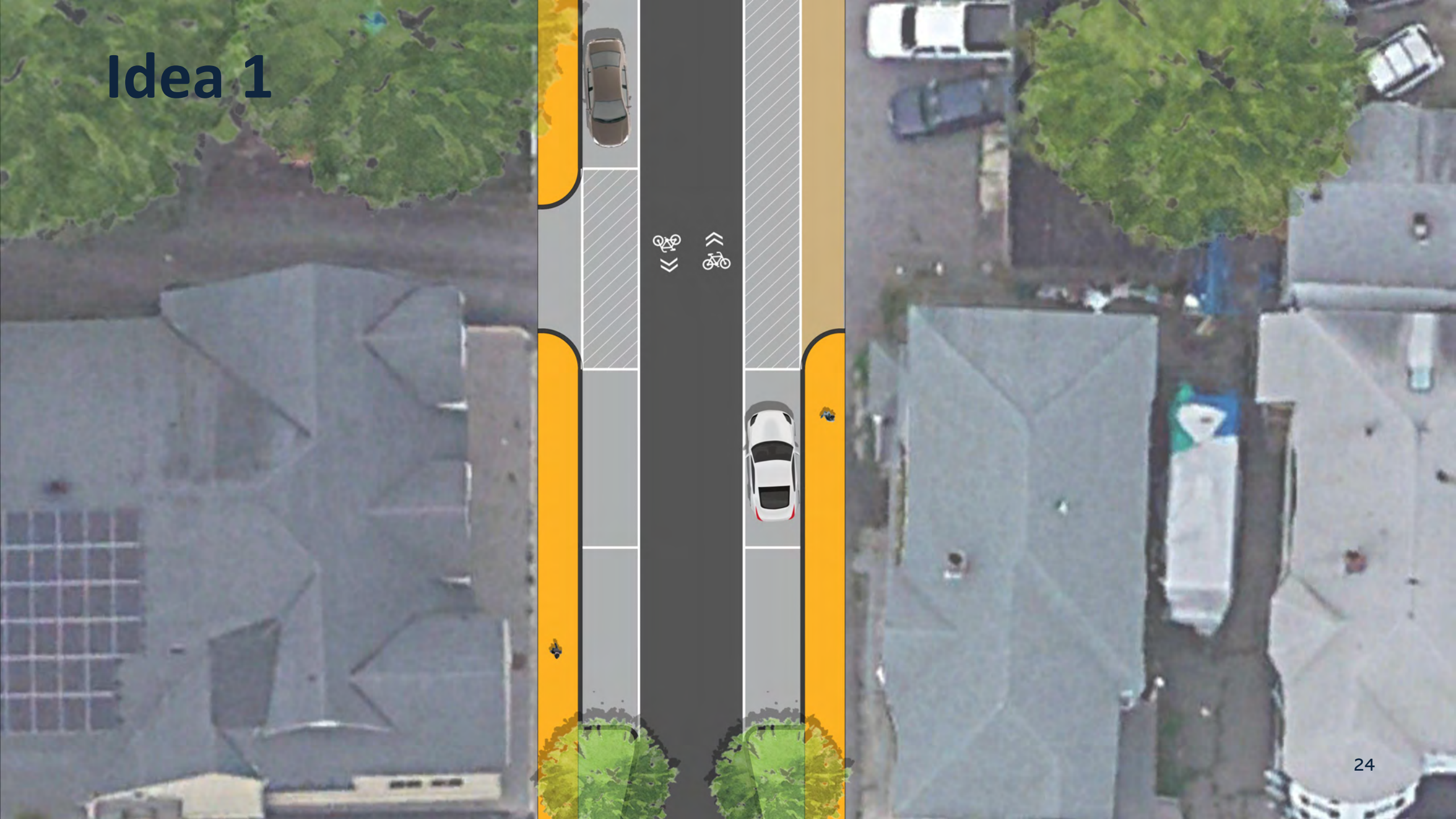
## Shared street Pedestrian and green space bump-outs



## Shared street Parallel parking



# Idea 1



# Initial Reactions to the Design Concepts

10 min



# Design Break: Design a Complete Street!

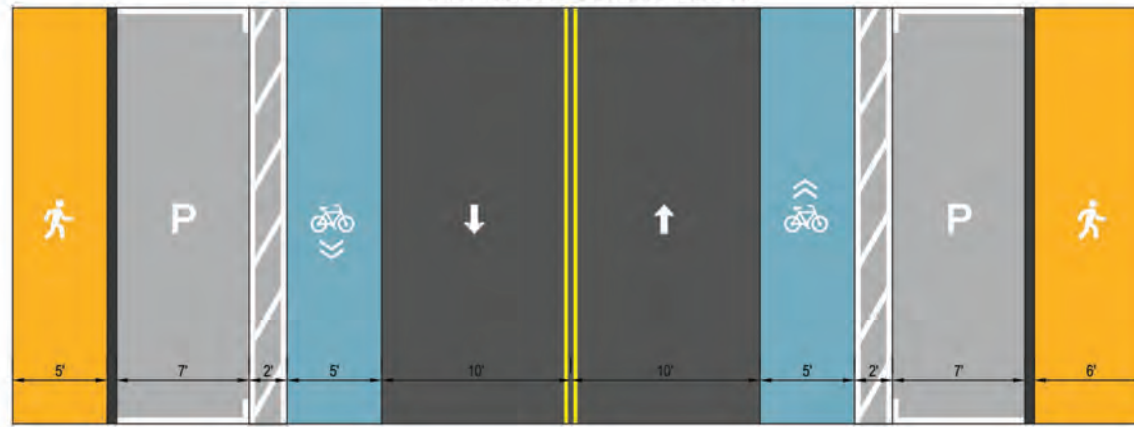
## Create a Complete Street Space along Endicott Street

### Goals:

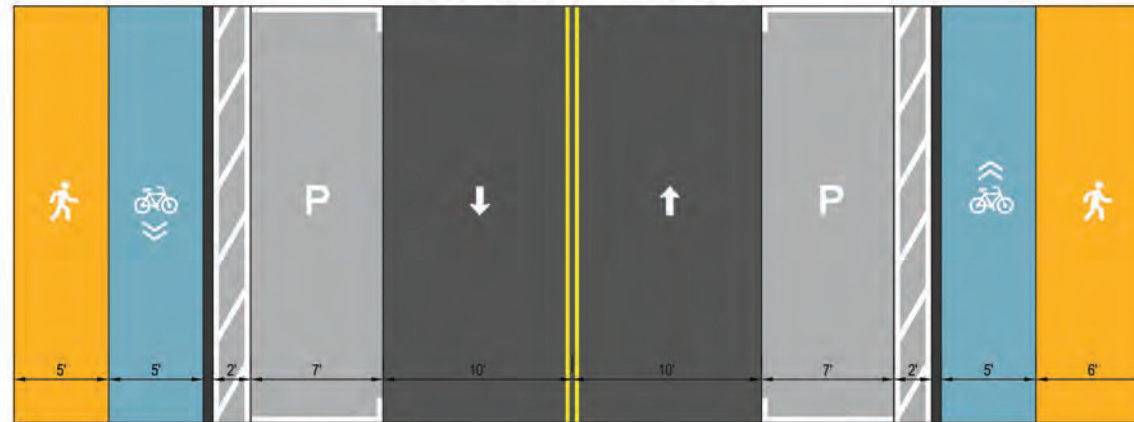
- Expand public pedestrian space
- Integrate parallel parking
- Incorporate bike lanes
- Locate Street trees

20 min

# Templates:



OPTION 2: TWO-WAY BIKE LANE WITH BUMP-OUTS





47



# Re-group & Present:

- Your Designs
- Lessons Learned From the Exercise
- Any Additional Feedback on the Design Concepts

**5 min per table**

# Wrap Up



**2<sup>nd</sup> meeting soon, details TBD**

**How can I follow this project's progress?**

Check [www.worcesterma.gov/mobility/planning](http://www.worcesterma.gov/mobility/planning) for updates, copies of these slides, and more.

# Thank you

Michael Easler, Weston & Sampson

[easlerm@westonandsampson.com](mailto:easlerm@westonandsampson.com)

City of Worcester

[GreenWorcester@worcesterma.gov](mailto:GreenWorcester@worcesterma.gov)

[Mobility@worcesterma.gov](mailto:Mobility@worcesterma.gov)

