

CITY OF WORCESTER, MASSACHUSETTS CITY CLERK DEPARTMENT

Niko Vangjeli, City Clerk
Stephen A.J. Pottle, Deputy City Clerk

How to Use AutoMARK Voter Assist Terminal

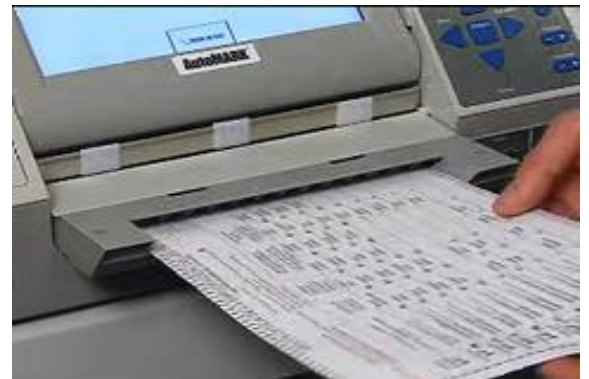
The AutoMark is a ballot marking system designed to permit a voter to privately and independently mark a ballot.



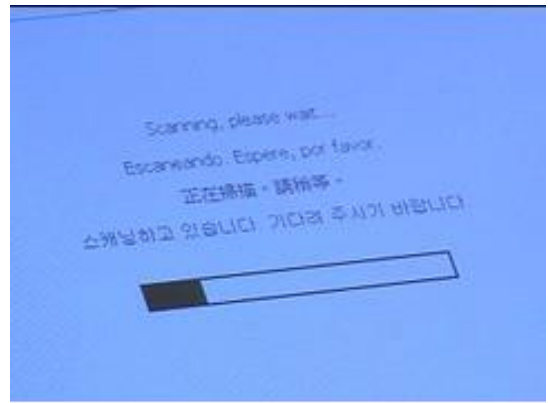
Voting on the ES&S AutoMark is easy. To begin, insert your ballot into the machine.



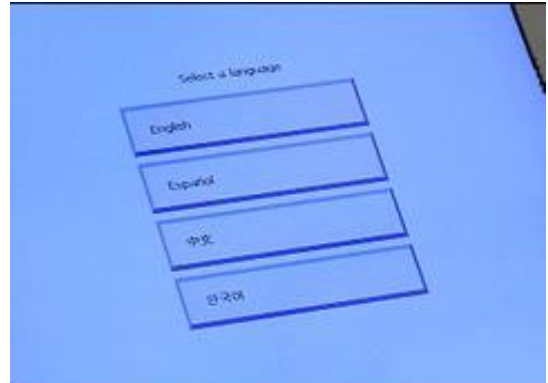
Note: It takes one to two minutes for the machine to display your ballot – depending on how much information is on the ballot.



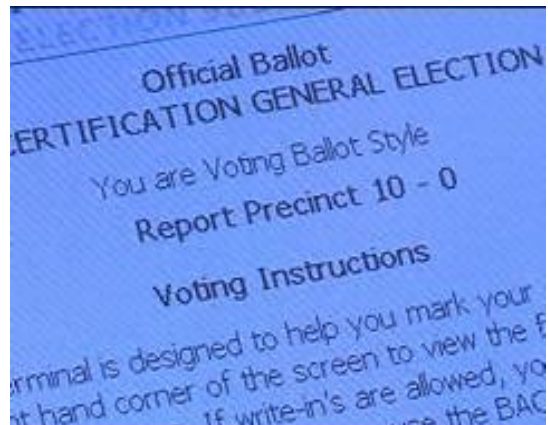
A prompt on the screen will let you know the AutoMark is processing your ballot.



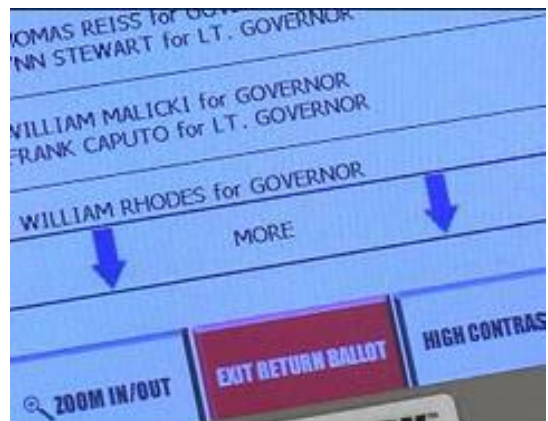
When ballots have been programmed with languages other than English, you will be given a choice of language to select from.



You will be provided with instruction in both audio and visual display— carefully review the instructions - and select “next” to proceed to your ballot.



At any time, you may choose to enlarge the letters on screen by selecting the “Zoom In/Out” function. Or, you may choose to change the display to from black letters on a white screen to white letters on a black screen, by selecting the high-contrast function.



The AutoMark can provide you with audio instruction through the use of headphones. **Let a poll worker know if you have any problems operating the machine.** The AutoMARK includes an audio control keypad that enables you to adjust volume, pause & repeat audio message, and even adjust the audio tempo.

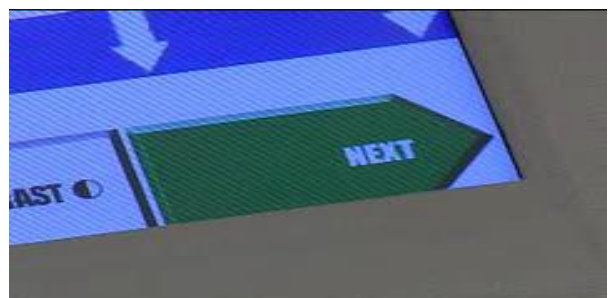


Voting with the AutoMARK

Once your ballot is loaded, you will begin to make selections for each candidate or issue for which you intend to cast a vote. To make a choice, select a candidate or issue, and your selection will be displayed on the screen. If you are using headphones, your selection will be confirmed with audio instruction.



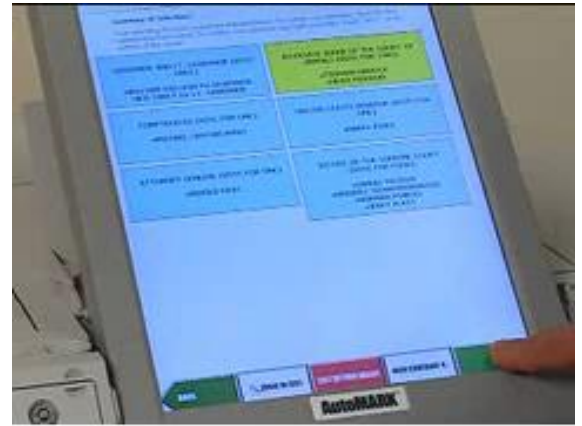
To move through the ballot after you have voted on a page – select next to move forward. At any time, you may select back to return to a previous page.



Once voting is complete, you can review your selections on the summary screen before your ballot choices are printed on the ballot.



After you are satisfied with all your selections, you are ready to mark your ballot. To do so, select the green blinking next button at the bottom of the screen. You will be asked to confirm that you would like to mark your ballot by touching the “mark ballot” prompt.



Contact us if we can help

The Worcester Elections office is committed to making voting accessible for all voters. Please let us know how we can improve accessibility by calling us at (508) 799-1134. You may also e-mail us at elections@worcesterma.gov.

