



The City of
WORCESTER

City Clerk Department

Nikolin Vangjeli, City Clerk

Stephen A.J. Pottle, Deputy City Clerk

Clare M. Robbins, Assistant City Clerk

**BOARD OF ELECTION
COMMISSIONERS MEETING
THURSDAY, MAY 19, 2022 5:30 P.M.
WHA CONFERENCE CENTER
630 PLANTATION STREET**

Call to Order by the Chairperson

Pledge of Allegiance

Roll Call

Approval of the Minutes of the May 12 meeting

PUBLIC HEARING

- I. Discussions regarding the consent decree, of Worcester Interfaith, Inc. et al v. City of Worcester, Massachusetts et al.
 - i. The plaintiffs proposed 6 district school committee lines.****

- II. Discussion concerning the proposed polling locations for the 2022 State Election Season.**

Adjournment:

Next Meeting Date:

TO PARTICIPATE VIRTUALLY DURING THE MEETING:

PHONE NUMBER: 415-655-0001

ACCESS CODE: 160-935-9156#

ATTENDEE ID: #

Log in via your computer:

<https://cow.webex.com/meet/ElectionCommissionwebex>

Board of Election, Commissioners' Meeting Minutes

Date: May 12, 2022

Location: Unitarian Universal church, 90 Holden Street

Members Present: Kimberley Vanderspek, Winifred Octave, John DiCicco, and Paul Franco. B

City Officials Present: Clare Robbins, Niko Vangjeli, Michael Traynor, Prof. Persil, Donna Colorio.

Meeting was called to order at 5:30 pm

Pledge of Alliance was said.

First Business Item:

Niko Spoke first about the proposed school committee redistricting with city solicitor and expert, Prof Persily. City Council approved 6 school districts and two at-large.

Consent decree entered by the court. Majority-minority districts.

Karl Gomes: asked city solicitor about coordinating the districts with City Council to avoid confusion among of the voters.

Paul asked about mirroring City Council Districts with the proposed school districts. This would require City Council to propose a change to the charter.

Susan Mailman also voiced her concerns getting about number of City Council districts to match the proposed school committee

David Coyne of Worcester voiced his support of the redistricting

Councilwoman Colorio asked about the purpose of the lawsuit. City Solicitor said there were no minority-majority districts for school committee.

Professor Presily said that the proposed 6 districts map will have to be changed a

Second Business Item:

David Coyne talked about the polling places changes for upcoming primary and state elections for 2022. How many polling places will be located outside the voting districts?

Niko said the locations are trying to maintained existing precincts but there are 12 new polling places.

Jim Chaplaine asked if his polling places will be changed.

Max Potential asked about the getting background of the issues presented on the polling places.

Diane Fratoni asked about the expenditures for the new polling places and poll workers. Niko said the budget outlays will be made to implement the process. Greatest concerns involve potential voting confusion. There will be multiple voting ballots.

David Coyne said that when he first moved here there were 70 precincts and the population was smaller. The city has handled this before so is shouldn't be too difficult to handles

Next Meeting scheduled for Thursday, May 19th at 5:30 pm at WHA
CONFERENCE CENTER, 630 PLANTATION STREET

Meeting adjourned at 6:15 pm.

brownrudnick

BRIAN M. ALOSCO
direct dial: 617.856.8511
fax: 617.289.0886
balosco@brownrudnick.com

May 09, 2022

VIA E-MAIL

Professor Nathan Persily
Stanford Law School
559 Nathan Abbott Way
Stanford, CA 94305-8610
npersily@stanford.edu

**RE: Worcester Interfaith, Inc., et al. v. City of Worcester, et al.,
Case No. 4:21-cv-40015-TSH**

Dear Professor Persily,

Attached please find Plaintiffs' proposed map for the new School Committee districts in Worcester. It can also be accessed [here](#). As you know, pursuant to the Consent Decree in the above-captioned case, you as the independent expert are charged with drawing the new district map to be implemented beginning with the 2023 School Committee elections.¹ We hope that this information will assist you in that effort.

In designing this proposed map, Plaintiffs have considered a number of different factors. First and foremost, we have looked to the mandates of the Consent Decree to ensure that the map is compliant in all respects with what the parties have agreed upon and the Court has approved as a binding court order. This includes the requirements that two districts be "majority-minority,"² that district boundaries be drawn "to optimally meet and protect" the ability of communities of color in Worcester to elect representatives of their choice, and that the map fully comply with the Voting Rights Act and other applicable federal and state laws.³

In addition, as we have done throughout this litigation, Plaintiffs have sought input from the broader community, particularly from Worcester's communities of color. In incorporating the

¹ See *Worcester Interfaith, Inc. et al. v. City of Worcester et al.*, No. 21-CV-40015 TSH, ECF 54 (Consent Decree), Section R ("the final decision regarding district boundaries shall rest with the independent expert").

² *Id.* Section G(c) (defining majority-minority districts as "single member districts where Hispanic/Latino/a and Black residents together comprise a majority of the citizen voting age population").

³ *Id.*, Section S.



community feedback we have gathered through community presentations and outreach, we have been guided by traditional redistricting principles, such as keeping communities of interest together and respecting natural boundaries where possible.⁴ We have been particularly aided in this endeavor by the “districtr” mapping tool created by the MGGG Redistricting Lab at Tufts University, which has allowed direct community input and engagement in this mapping process. We extend our deepest gratitude to the Tufts team for their efforts in democratizing redistricting and making this type of mapping tool broadly accessible.

As to the specific districts created, Districts 1 and 2 are the two “majority-minority” districts called for under the Consent Decree. Notably, these districts not only meet the requirements of the Consent Decree, they are also districts that would naturally be created simply based on traditional redistricting principles. For example, District 1 encompasses a historically well-defined neighborhood – Main South – which is defined by the commercial and residential areas surrounding the southern portion of Main Street and includes Clark University and University Park. Proposed District 1 extends north and west from Main South, to surrounding areas that share many commonalities. Outer boundaries of this district were created based on community input as to where divisions appeared to make most sense. For example, Highland Street to the north was seen by many as a natural line of demarcation between this district and District 5.

District 2 begins just to the east of District 1 and extends northward. It encompasses established neighborhoods such as Union Hill and the Canal District near its southern boundary, and extends up to Great Brook Valley in the north, including a number of pre-existing East Side neighborhoods along the way (*e.g.*, Shrewsbury Street, Brittan Hill). This makes for a somewhat elongated district, but one that many community members noted is marked by commonalities shared by residents in these areas, including common recreation, shopping areas, and faith communities.

Once these first two districts were created, the remaining four districts fell into place around them quite naturally, due to Worcester’s configuration and outer limits. Of particular note, District 4 (the southernmost district) forms a cohesive district based on shared communities of interest, and also results in a district that is over 40% residents of color. This demography suggests a high probability that communities of color will be able to elect candidates of their choice in this district as well, consistent with the Consent Decree’s mandate that all districts be drawn to optimally meet and protect the interests of Worcester’s communities of color.

⁴ In addition to relying on information we have gathered from community input sessions specific to this litigation, we have also incorporated local community feedback obtained during Massachusetts’ recent State redistricting process, where similar issues concerning Worcester’s communities of interest, natural boundaries, etc. were relevant.



A few additional notes:

1) The district mapping tool shows Voting Age Population (VAP), rather than the Citizen Voting Age Population (CVAP) metric that is called for under the Consent Decree. Our preliminary analysis of CVAP data, however, suggests that our proposed map meets the requirements of the Consent Decree as to CVAP as well. We recognize though that some adjustments to district boundaries may be required as you analyze the most recent CVAP data in greater detail.

2) We are aware of the City's interest in aligning the School Committee districts with existing wards and precincts. Our view generally is that "the tail should not wag the dog" – *i.e.*, meeting the terms of the Consent Decree should be prioritized above aligning the districts with existing wards and precincts (and some precinct-splits will be required no matter how the map is drawn). Nonetheless, we recognize that precinct-splitting creates some administrative hurdles, which in turn can lead to voter confusion – a result that all parties wish to avoid. Accordingly, where possible, we have drawn our districts to respect existing precinct lines, and to minimize other administrative hurdles. In those instances where this effort was in tension with the mandates and goals of the Consent Decree, however, we have prioritized compliance with the Consent Decree, as we believe is required by law.

In this regard, we note that the City has not to date changed the number of *City Council* districts, of which there are currently five. This means that the City Council districts will be unable to align with the six School Committee districts that are now required by court order. The Consent Decree explicitly states that the City "shall consider whether to also change the City's method of electing City Council in order to align it with the Chosen Electoral System [for School Committee]..."⁵ However, it is our understanding that this consideration has not yet occurred in any open, public session of the City Council. To the degree that the City wishes to avoid administrative burdens and voter confusion in its elections, aligning the City Council districts with the new School Committee districts is a clear and obvious way to do so. It remains Plaintiffs' hope that the City will take this step before the November 2023 elections, to prevent the type of administrative problem that City officials have stated they wish to avoid.

We look forward to hearing additional community input during the upcoming Election Commission hearings. In the meantime, please do not hesitate to reach out to us if you have any questions about our proposed map or would like any further information. Thank you in advance for your time and expertise in helping to effect this change in Worcester's electoral system, which will advance equal voting opportunity and benefit Worcester's residents for years to come.

⁵ Consent Decree, Section K.



Sincerely,

BROWN RUDNICK LLP

/s/ Brian M. Alosco

Rebecca MacDowell Lecaroz
Brian M. Alosco

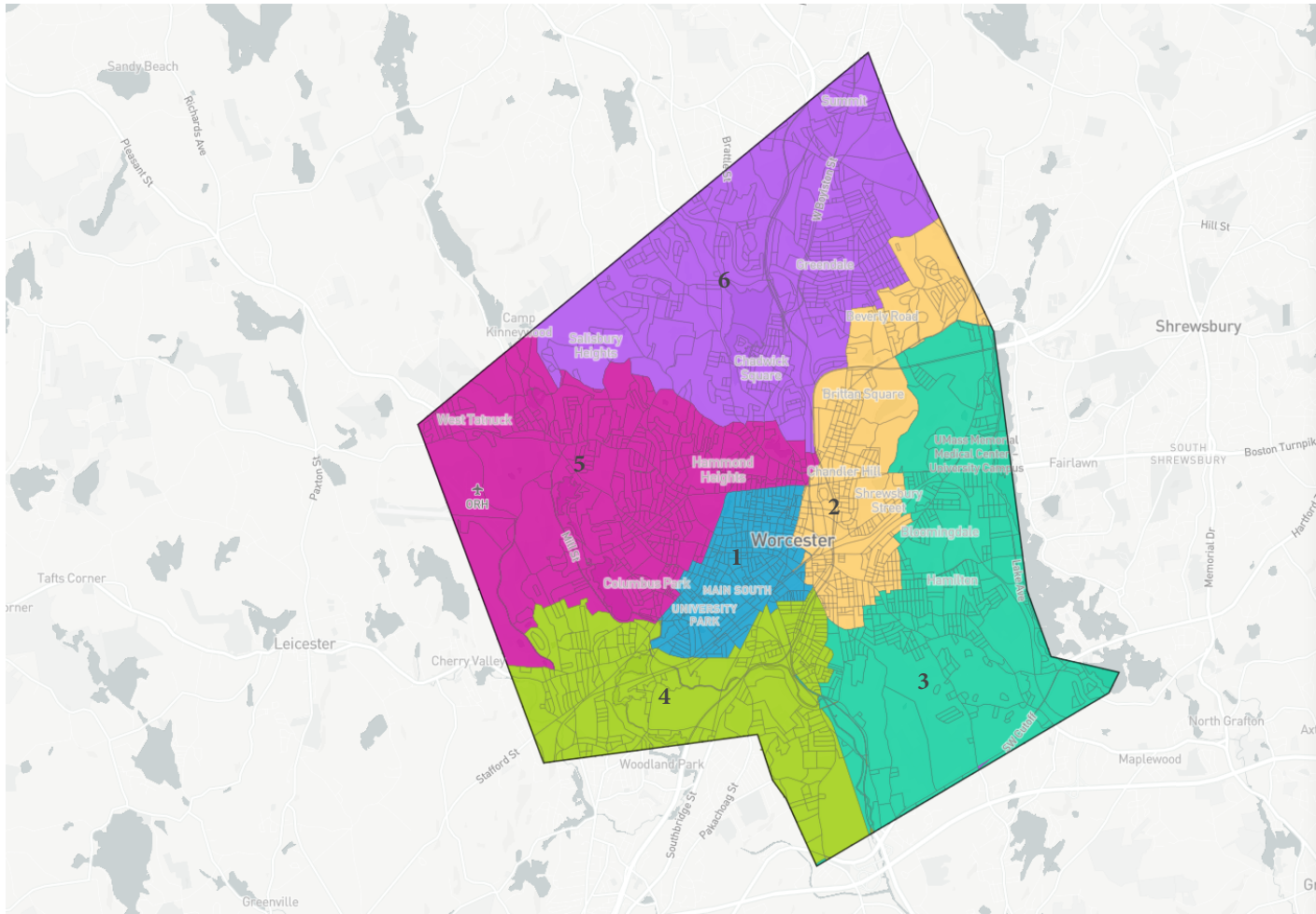
LAWYERS FOR CIVIL RIGHTS

/s/ Oren Sellstrom

Oren Sellstrom

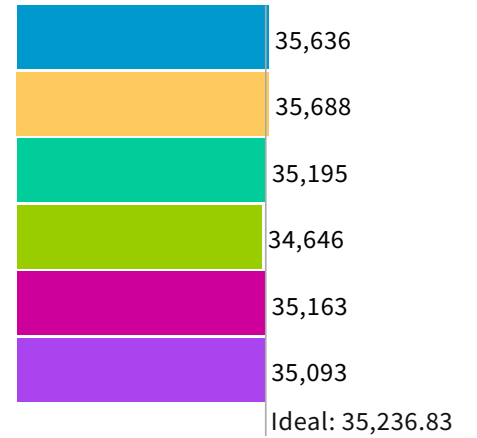
Enclosure

cc: Michael Traynor, City Solicitor



▼ **Population Balance**

① Uses 2020 Decennial Census data on 2020 Blocks.



UNASSIGNED POPULATION: 0
 MAX. POPULATION DEVIATION: 1.68%



The City of
WORCESTER

City Clerk Department

Nikolin Vangjeli, City Clerk
Stephen A.J. Pottle, Deputy City Clerk
Clare M. Robbins, Assistant City Clerk

Election administration analysis of the proposed map provided by the plaintiffs on 05/09/2022.

School	Council Split Districts:
District 1	D5, D4, D2
District 2	D1, D2, D3
District 3	D2, D3
District 4	D3, D4, D5
District 5	D2, D1, D5
District 6	D5, D2, D1

This would require 17 ballot styles just on the Split Council Districts. The quantity of ballots **DOES NOT** reflect the ballot styles needed to accommodate split precincts.

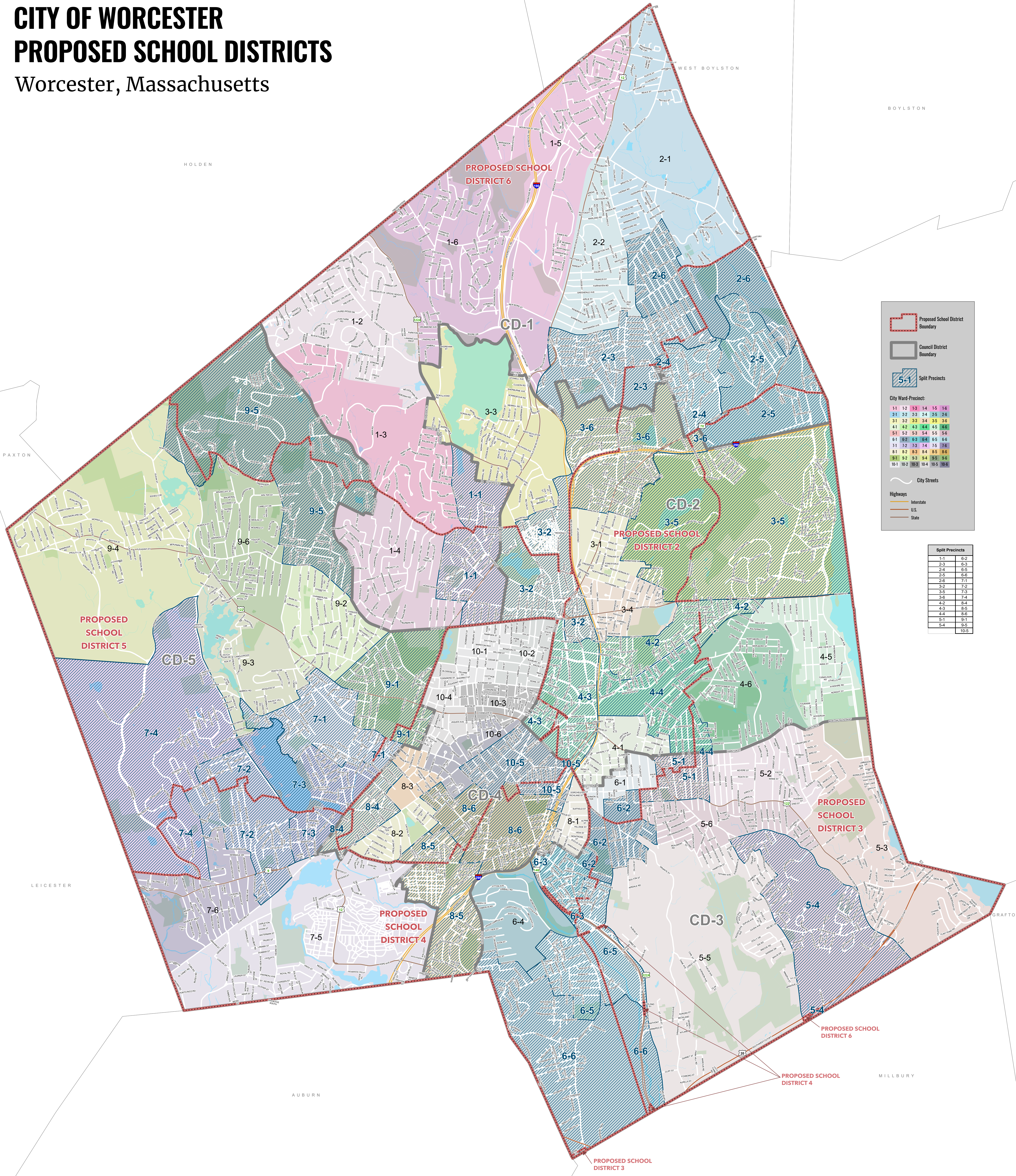
The proposed Six District Plan contains roughly **(26) split precincts.**

1-1	2-4	2-6	3-5	4-2	4-4	9-5
6-2	6-5	7-1	7-3	8-4	8-6	10-5
2-3	2-5	3-2	3-6	4-3	5-1	
6-3	6-6	7-2	7-4	8-5	9-1	

The City of Worcester currently has 60 polling locations for the 5 City Council Districts.

CITY OF WORCESTER PROPOSED SCHOOL DISTRICTS

Worcester, Massachusetts



Proposed School District Boundary

Council District Boundary

5-1 Split Precincts

City Ward-Precinct:

1-1	1-2	1-3	1-4	1-5	1-6
2-1	2-2	2-3	2-4	2-5	2-6
3-1	3-2	3-3	3-4	3-5	3-6
4-1	4-2	4-3	4-4	4-5	4-6
5-1	5-2	5-3	5-4	5-5	5-6
6-1	6-2	6-3	6-4	6-5	6-6
7-1	7-2	7-3	7-4	7-5	7-6
8-1	8-2	8-3	8-4	8-5	8-6
9-1	9-2	9-3	9-4	9-5	9-6
10-1	10-2	10-3	10-4	10-5	10-6

City Streets

Highways

- Interstate
- U.S.
- State

Split Precincts

1-1	6-2
2-3	6-3
2-4	6-5
2-5	6-6
2-6	7-1
3-2	7-2
3-5	7-3
3-6	7-4
4-2	8-4
4-3	8-5
4-4	8-6
5-1	9-1
5-4	9-5
10-5	10-5



DATA SOURCES:
Proposed School District Boundaries: district.org/plan/128786
All Other Data: City of Worcester Geographic Information System
Original Data - Digitized at 1:680 scale (Data true resolution: 1 inch = 40 feet).
Updated Using Spring 2003 Aerial Photography at 1:1,200 scale (1 inch = 100 feet).
Further Updates Using City of Worcester Information.

The ward and precinct boundaries depicted on this map were adopted by the Board of Election Commissioners October 14, 2021 and were approved by the Local Election Districts Review Committee October 27, 2021. These boundaries became effective December 31, 2021.

COORDINATE SYSTEM:
All map data is in the Massachusetts State Plane Coordinate system, North American Datum of 1983, Massachusetts Mainland Zone (G151). Units are measured in Feet.

MAY 12, 2022

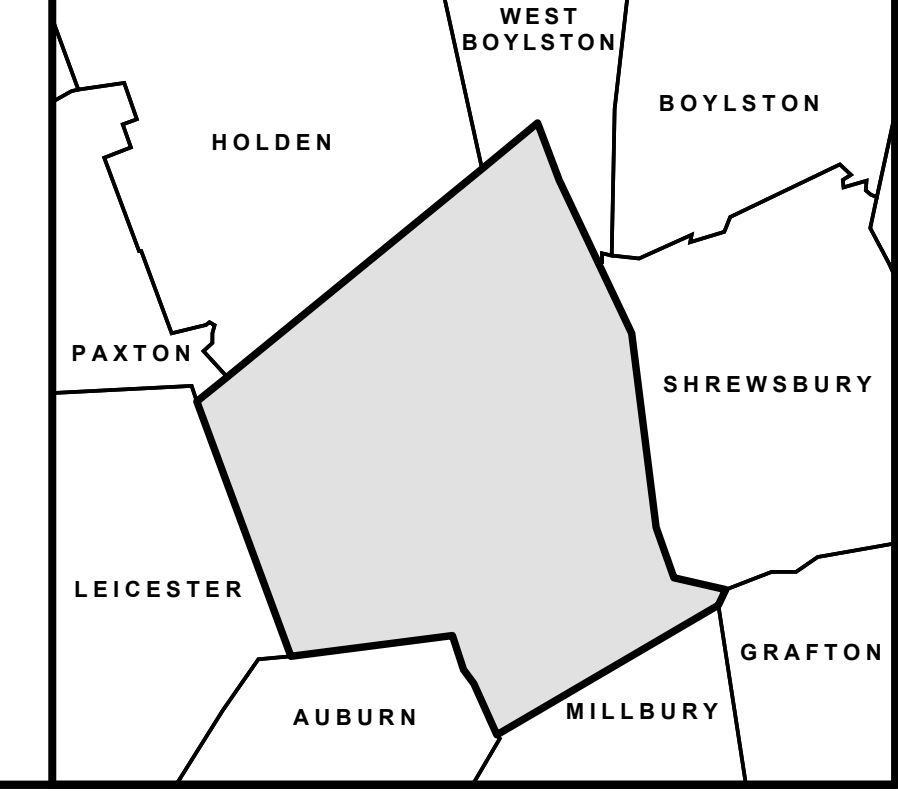
1:14,700
1 inch = 1,225 feet

0 1,225 2,450 3,675 4,900 Feet

0 0.5 1 Mile

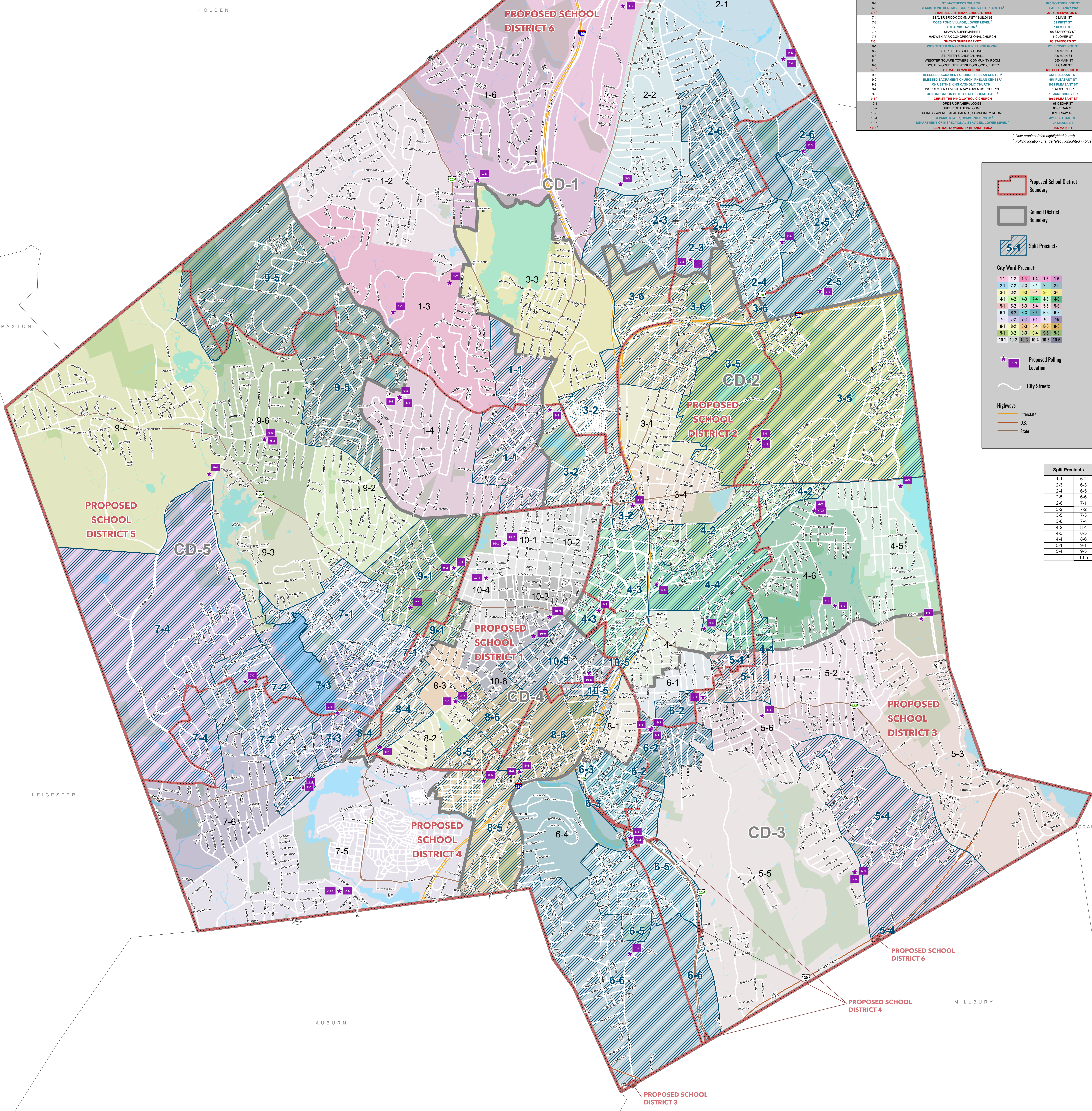
**Produced by the City of Worcester
Technical Services Department
Geographic Information Systems Division
Worcester, Massachusetts**

Considerable effort has been made to ensure the accuracy, correctness and timeliness of data presented; however, this information is only as accurate as its sources and may not reflect the most current information. The City of Worcester assumes no liability for any errors, omissions or inaccuracies and makes no warranty, representation or guaranty of any kind, express or implied, as to the content or for any decisions made or actions taken or not taken by the user based upon any information provided on this map.



CITY OF WORCESTER PROPOSED SCHOOL DISTRICTS & POLLING LOCATIONS

Worcester, Massachusetts



Proposed Polling Locations

WARD/PRECINCT	LOCATION	ADDRESS
1-1	CONGREGATION BETH ISRAEL, SOCIAL HALL	15 JAMESBURY DR
1-2	MELION PLACE ELEMENTARY SCHOOL	50 SALISBURY ST
1-3	ASSUMPTION COLLEGE, LA MARION FRANCAIS	50 SALISBURY ST
1-4	CONGREGATION BETH ISRAEL, SOCIAL HALL	15 JAMESBURY DR
1-5	MARKET ST. PRICE CHOPPER SUPERMARKET, LEFT FRONT DOOR	27 WILLIAM ST
1-6	UNITARIAN UNIVERSALIST CHURCH HALL	36 HOLDEN ST
2-1	SALISBURY COMMUNITY CENTER, REAR, SECOND FLOOR	215 BURNINGHAM ST EAST
2-2	ZION LUTHERAN CHURCH, LEEDS ST SIDE	41 WINTHURST AVE
2-3	BURNINGHAM HIGH SCHOOL, GYM	179 BURNINGHAM ST
2-4	LINCOLN VILLAGE RESIDENTS ALLIANCE, VOKSBURG SIDE	115 COUNTRY CLUB BLVD
2-5	GREAT BROOK VALLEY HALL/SPORTS CENTER	180 CONSTITUTION ST
2-6	SALEM COVENANT CHURCH, REAR, SOCIAL HALL	215 MOUNTAIN ST EAST
3-1	WORCESTER TECHNICAL HIGH SCHOOL, GYM	1 OFFICER MANNY FARMAWAY
3-2	BELMONT TOWER APARTMENTS, REAR, COMMUNITY ROOM	49 BELMONT ST
3-3	WORCESTER CENTER FOR OLYMPIC LOBBY	25 BURNINGHAM RD
3-4	WORCESTER TECHNICAL HIGH SCHOOL, GYM	1 OFFICER MANNY FARMAWAY
3-5	LIVING WORD CHURCH	179 BURNINGHAM ST
3-6	BURNINGHAM HIGH SCHOOL, GYM	179 BURNINGHAM ST
4-1	FRIENDLY HOUSE, REAR, GYM	38 WALL ST
4-2	AMERICAN LEGION EAST SIDE POST	138 PLANTATION ST
4-3	WORCESTER PUBLIC LIBRARY	1 SALEM ST
4-4	ST. CHARLES, APARTMENTS	55 SOUTHBRIDGE ST
4-5	LINCOLN PARK TOWER, COMMUNITY ROOM	11 LAKE AVE
4-6	NORTH HIGH SCHOOL	150 HARRINGTON WAY
5-1	ADDISON APARTMENTS, COMMUNITY ROOM	4 ADOCTION ST
5-2	NORTH HIGH SCHOOL	150 HARRINGTON WAY
5-3	LAKE PARK COMMUNITY HOUSE, HANBURY ST SIDE	300 LAKE AVE
5-4	MASSACHUSETTS AUDUBON SOCIETY BROAD MEADOW BROOK, LEARNING CENTER	414 MASSASOIT RD
5-5	MASSACHUSETTS AUDUBON SOCIETY BROAD MEADOW BROOK	414 MASSASOIT RD
5-6	OUR LADY OF LORETO, REAR, PARISH CENTER	33 MASSASOIT RD
6-1	WORCESTER SENIOR CENTER, LUNCH ROOM	128 PROVIDENCE ST
6-2	WORCESTER SENIOR CENTER, LUNCH ROOM	128 PROVIDENCE ST
6-3	BLACKSTONE HERITAGE CORRIDOR VISITOR CENTER	3 PAUL CLANCY WAY
6-4	ST. MATTHEW'S CHURCH	205 SOUTHBRIDGE ST
6-5	BLACKSTONE HERITAGE CORRIDOR VISITOR CENTER	3 PAUL CLANCY WAY
6-6	SHAW'S SUPERMARKET	205 BURNINGHAM ST
7-1	BEAVER BROOK COMMUNITY BUILDING	15 MANN ST
7-2	COES POND VILLAGE, LOWER LEVEL	39 FIRST ST
7-3	STEARNS TOWN	148 HILL ST
7-4	SHAW'S SUPERMARKET	68 STAFFORD ST
7-5	HAWKEYE PARK CONGREGATIONAL CHURCH	62 OLD ST
7-6	SHAW'S SUPERMARKET	68 STAFFORD ST
8-1	WORCESTER SENIOR CENTER, REAR	128 PROVIDENCE ST
8-2	ST. PETER'S CHURCH HALL	103 MAIN ST
8-3	ST. PETER'S CHURCH HALL	103 MAIN ST
8-4	WEBSTER SQUARE TOWERS, COMMUNITY ROOM	100 MAIN ST
8-5	SOUTH WORCESTER NEIGHBORHOOD CENTER	47 CAMP ST
8-6	ST. MATTHEW'S CHURCH	205 SOUTHBRIDGE ST
9-1	BLESSED SACRAMENT CHURCH, PHILAN CENTER	81 PLEASANT ST
9-2	BLESSED SACRAMENT CHURCH, PHILAN CENTER	81 PLEASANT ST
9-3	CHRIST THE KING CATHOLIC CHURCH	185 PLEASANT ST
9-4	WORCESTER SEVENTH-DAY ADVENTIST CHURCH	2 ANPORT DR
9-5	CONGREGATION BETH ISRAEL, SOCIAL HALL	15 JAMESBURY DR
9-6	CHRIST THE KING CATHOLIC CHURCH	185 PLEASANT ST
10-1	ORDER OF AMER LODGE	18 CEDAR ST
10-2	ORDER OF AMER LODGE	18 CEDAR ST
10-3	MURPHY AVENUE APARTMENTS, COMMUNITY ROOM	60 CEDAR ST
10-4	ELM PARK TOWER, COMMUNITY ROOM	435 PLEASANT ST
10-5	DEPARTMENT OF MUNICIPAL WORKS, LOWER LEVEL	67 BARRETT AVE
10-6	CENTRAL COMMUNITY BRANCH, WCA	788 MAIN ST

1. New precinct (also highlighted in red)
2. Polling location change (also highlighted in blue)

Proposed School District Boundary
Council District Boundary
Split Precincts

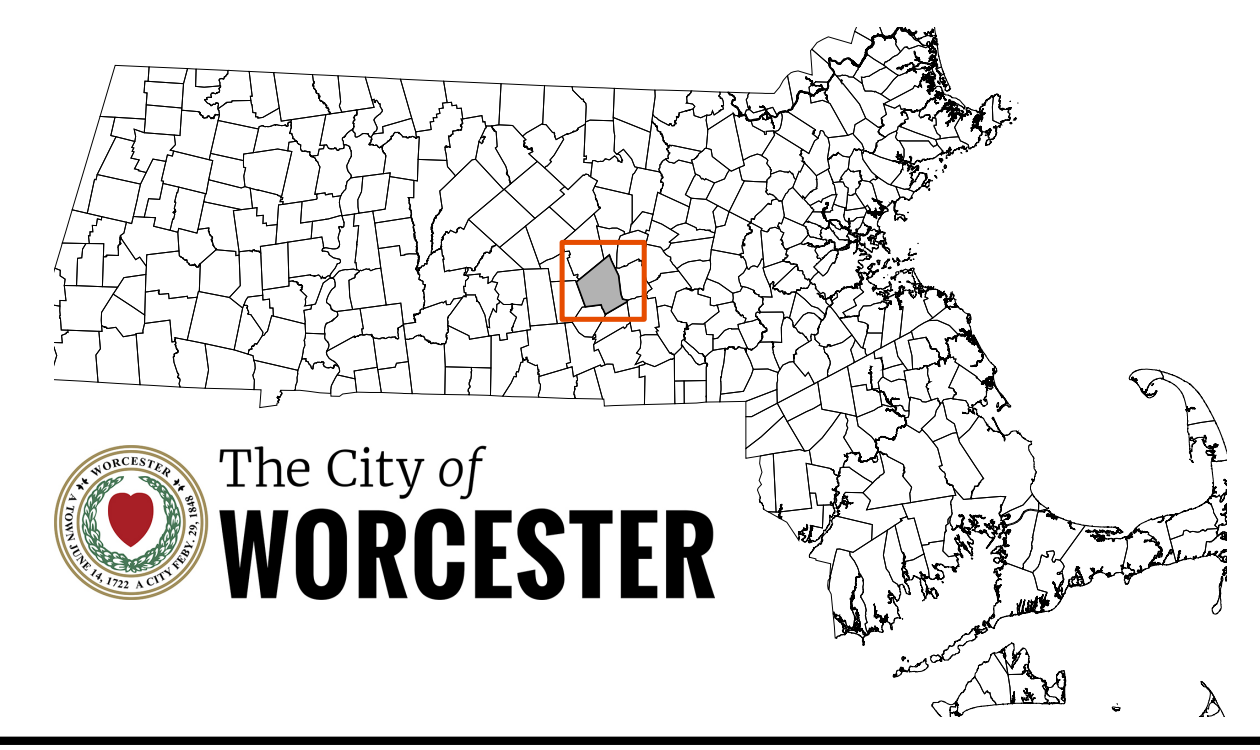
City Ward-Precinct:

1-1	1-2	1-3	1-4	1-5	1-6
2-1	2-2	2-3	2-4	2-5	2-6
3-1	3-2	3-3	3-4	3-5	3-6
4-1	4-2	4-3	4-4	4-5	4-6
5-1	5-2	5-3	5-4	5-5	5-6
6-1	6-2	6-3	6-4	6-5	6-6
7-1	7-2	7-3	7-4	7-5	7-6
8-1	8-2	8-3	8-4	8-5	8-6
9-1	9-2	9-3	9-4	9-5	9-6
10-1	10-2	10-3	10-4	10-5	10-6

Proposed Polling Location
City Streets
Highways
Interstate
U.S.
State

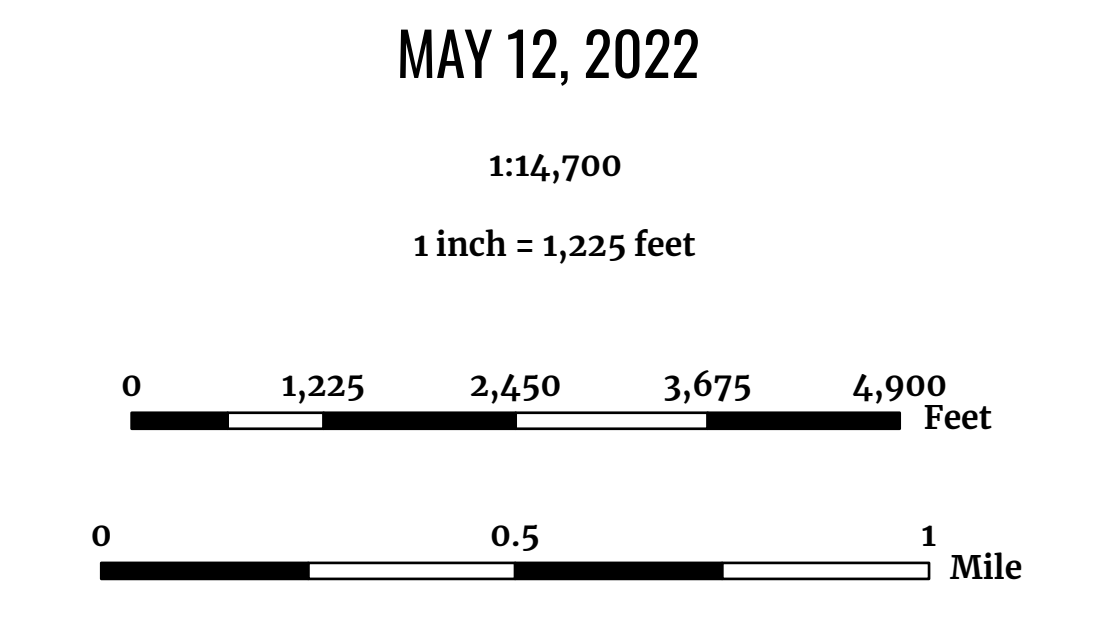
Split Precincts

1-1	6-2
2-3	6-3
2-4	6-5
2-5	6-6
2-6	7-1
3-4	7-2
3-5	7-3
3-6	7-4
4-2	8-4
4-3	8-5
4-4	8-6
5-1	9-1
5-4	10-5



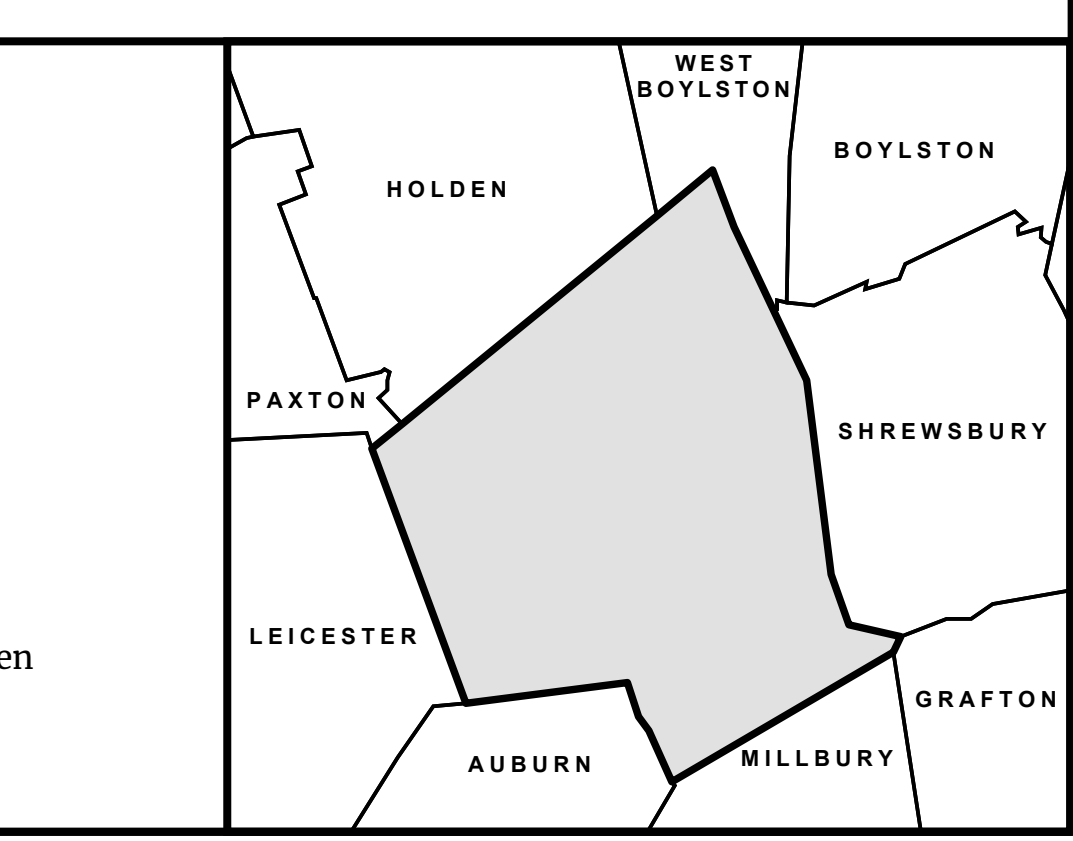
DATA SOURCES:
Proposed School District Boundaries: district.org/plan/128786
All Other Data: City of Worcester Geographic Information System
Original Data - Digitized at 1:680 scale (Data true resolution: 1 inch = 40 feet).
Updated Using Spring 2003 Aerial Photography at 1:1,200 scale (1 inch = 100 feet).
Further Updates Using City of Worcester Information.
The ward and precinct boundaries depicted on this map were adopted by the Board of Election Commissioners October 14, 2021 and were approved by the Local Election Districts Review Committee October 27, 2021. These boundaries became effective December 31, 2021.

COORDINATE SYSTEM:
All map data is in the Massachusetts State Plane Coordinate system, North American Datum of 1983, Massachusetts Mainland Zone (G151). Units are measured in Feet.



**Produced by the City of Worcester
Technical Services Department
Geographic Information Systems Division
Worcester, Massachusetts**

Considerable effort has been made to ensure the accuracy, correctness and timeliness of data presented; however, this information is only as accurate as its sources and may not reflect the most current information. The City of Worcester assumes no liability for any errors, omissions or inaccuracies and makes no warranty, representation or guaranty of any kind, express or implied, as to the content or for any decisions made or actions taken or not taken by the user based upon any information provided on this map.

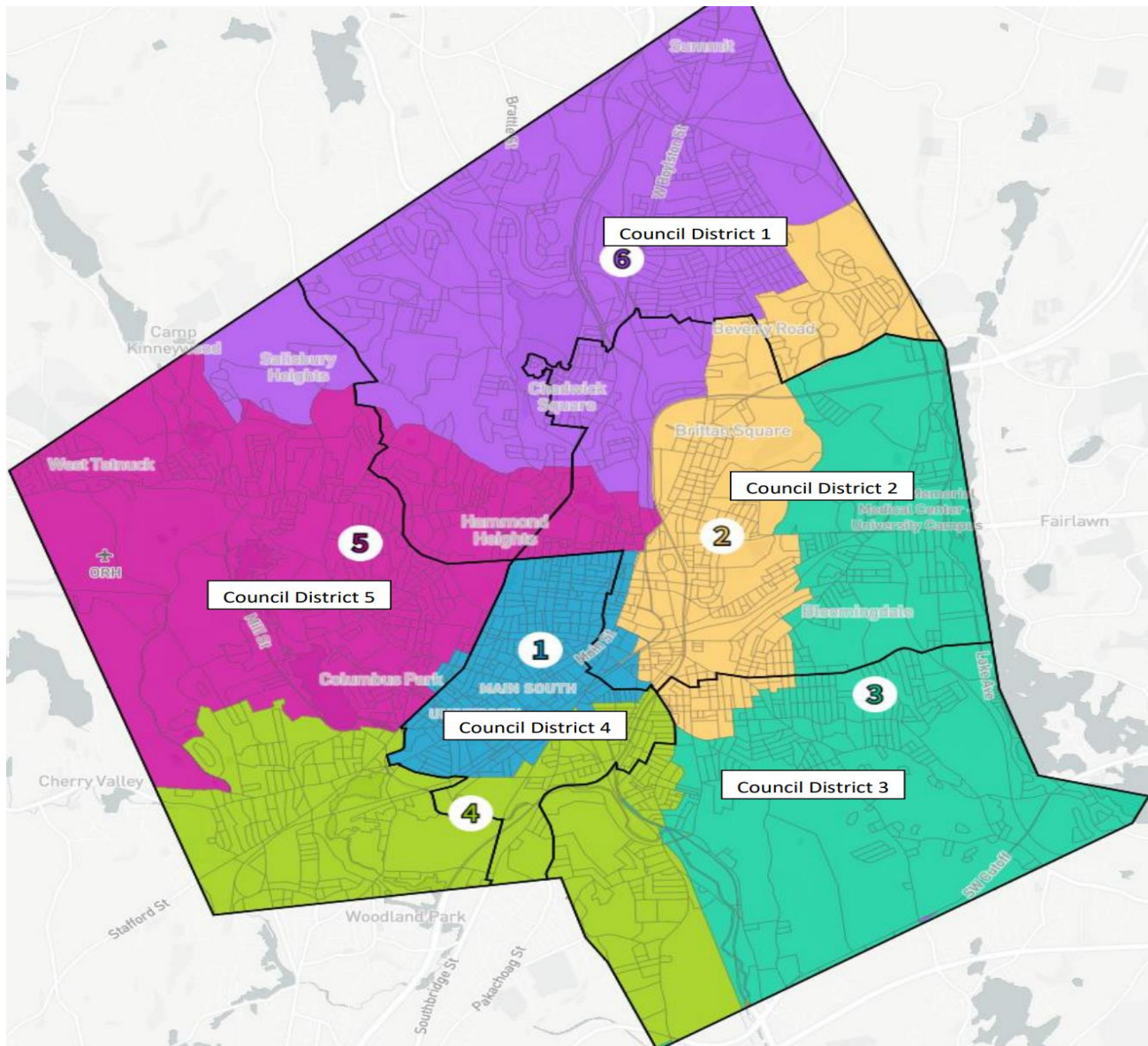




The City of **WORCESTER**

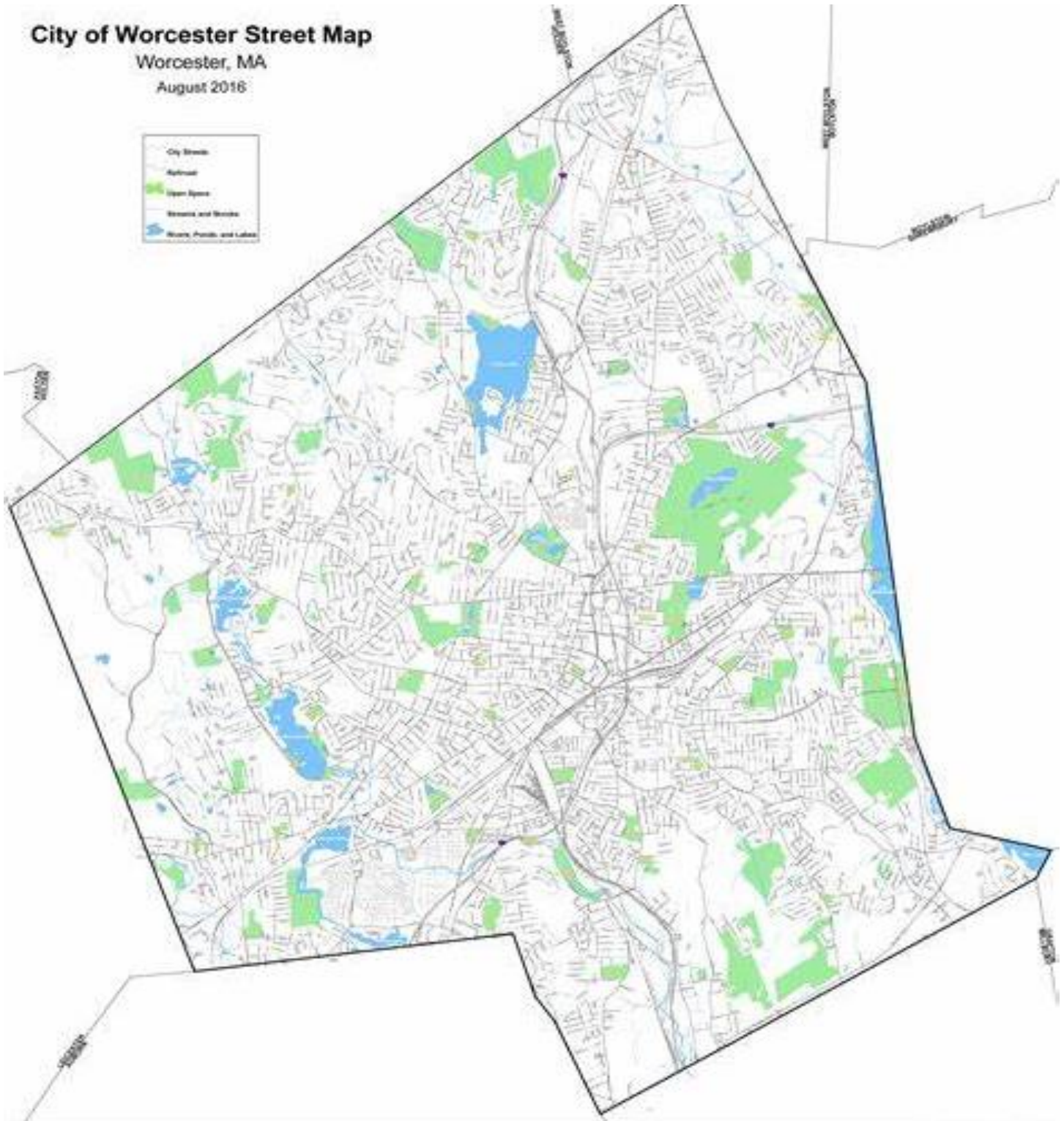
SCHOOL COMMITTEE DISTRICT & AT-LARGE ELECTION PROCESS

**THE WORCESTER SCHOOL COMMITTEE SHALL BE
COMPRISED OF: SIX (6) SINGLE-MEMBER DISTRICT-
BASED SEATS**



THERE SHOULD ALSO BE TWO (2) AT-LARGE SEATS

City of Worcester Street Map
Worcester, MA
August 2016





EARLY/ABSENTEE BALLOT
DE VOTACIÓN TEMPRANA / DE VOTO EN AUSENCIA
CITY OF WORCESTER / CIUDAD DE WORCESTER
MUNICIPAL ELECTION / ELECCION MUNICIPAL
NOVEMBER 7, 2023 / 7 DE NOVIEMBRE DE 2023
DISTRICT 1, WARDS 1 & 2 / DISTRITO 1, BARRIOS 1 & 2

STYLE: A

Kimberley A. Vanderspek
 Kimberley A. Vanderspek, Chair
 Board of Election Commissioners

INSTRUCTIONS TO VOTERS - INSTRUCCIONES PARA LOS VOTANTES
 To vote for a candidate, fill in the oval to the right of the candidate's name.
 Para votar por un candidato, llene el óvalo a la derecha del nombre del candidato.

MAYOR / ALCALDE
 Two Year Term / Término de Dos Años
 Vote for One / Vote por Uno

- Candidate 1 455 MAIN ST
- Candidate 2 455 MAIN ST
- Candidate 3 455 MAIN ST
- Candidate 4 455 MAIN ST

COUNCILOR AT LARGE
CONSEJAL GENERAL
 Two Year Term / Término de Dos Años

Vote for not more than Six / Vote por no mas de Seis

- Candidate 1 455 MAIN ST
- Candidate 2 455 MAIN ST
- Candidate 3 455 MAIN ST
- Candidate 4 455 MAIN ST
- Candidate 5 455 MAIN ST
- Candidate 6 455 MAIN ST
- Candidate 7 455 MAIN ST
- Candidate 8 455 MAIN ST
- Candidate 9 455 MAIN ST
- Candidate 10 455 MAIN ST

DISTRICT 1 COUNCILOR
CONSEJAL DEL DISTRITO 1
 Two Year Term / Término de Dos Años

Vote for One / Vote por Uno

- Candidate 1 455 MAIN ST
- Candidate 2 455 MAIN ST

SCHOOL COMMITTEE MEMBER
COMITÉ DE MIEMBRO DE ESCUELAS
 Two Year Term / Término de Dos Años

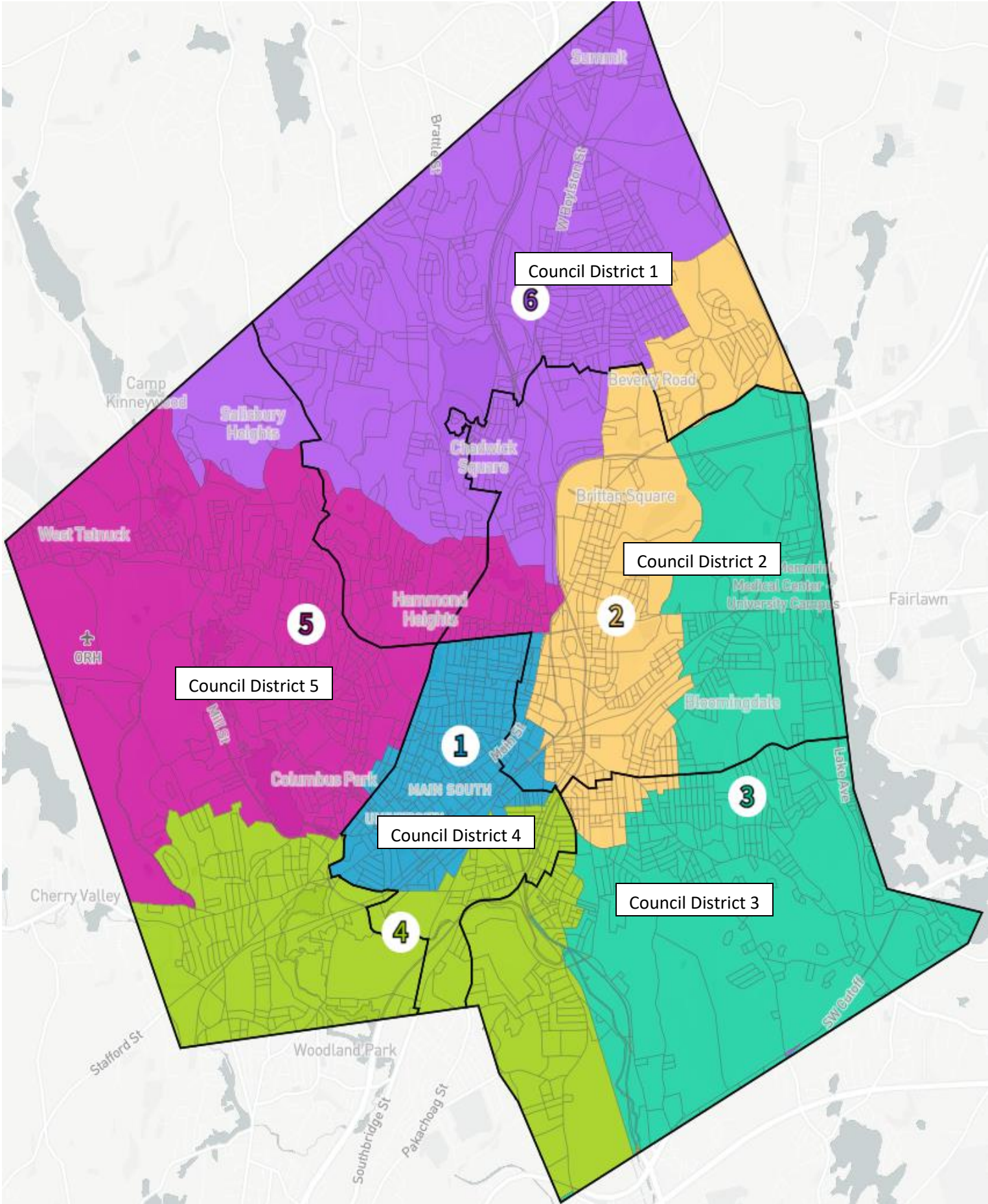
Vote for not more than Two / Vote por no mas de Dos

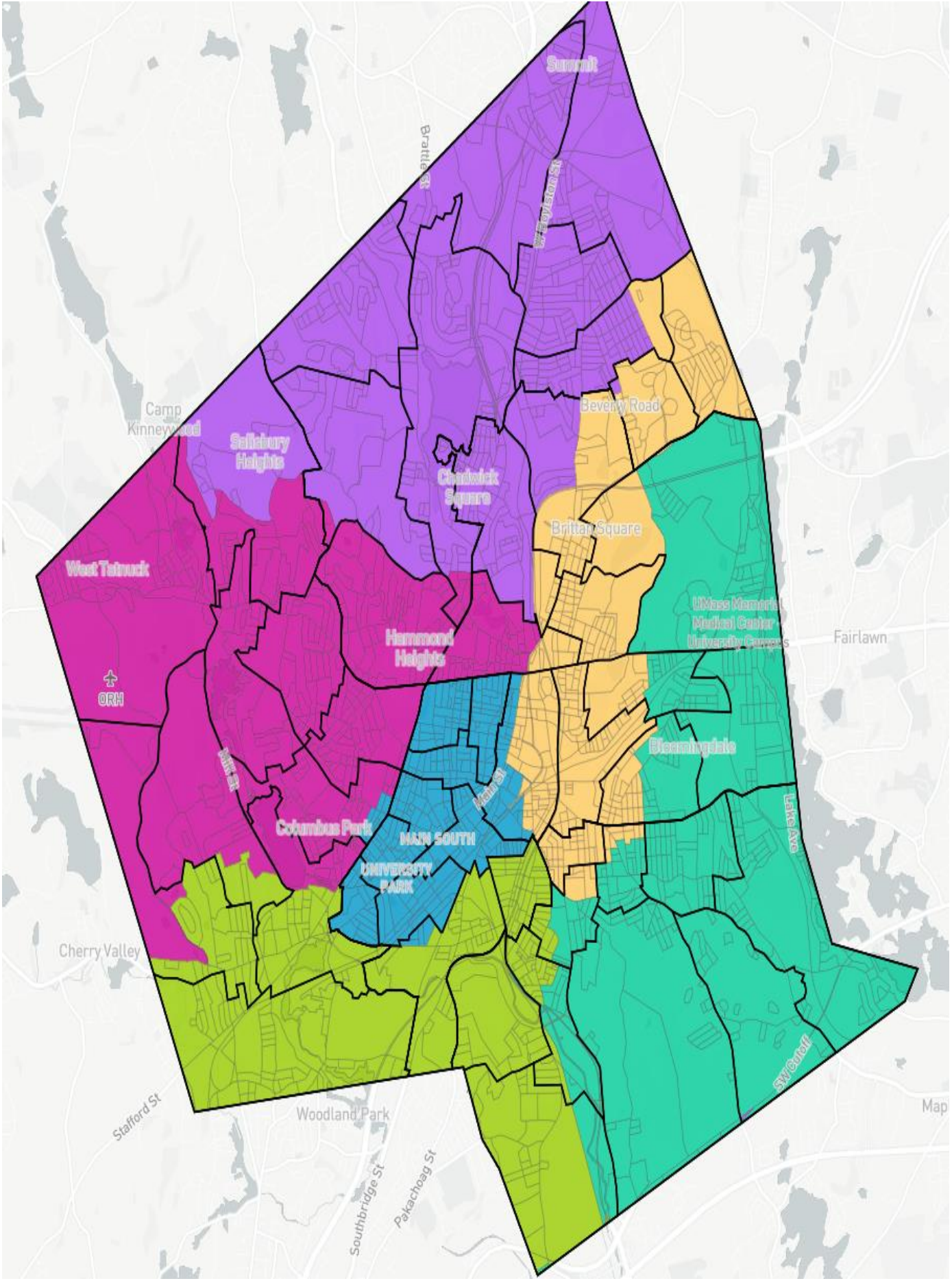
- Candidate 1 455 MAIN ST
- Candidate 2 455 MAIN ST
- Candidate 3 455 MAIN ST
- Candidate 4 455 MAIN ST
- Candidate 5 455 MAIN ST
- Candidate 6 455 MAIN ST
- Candidate 7 455 MAIN ST
- Candidate 8 455 MAIN ST

DISTRICT 1 SCHOOL COMMITTEE
MEMBER
COMITÉ DE MIEMBRO DE ESCUELAS
DEL DISTRITO 1
 Two Year Term / Término de Dos Años

Vote for One / Vote por Uno

- Candidate 1 455 MAIN ST
- Candidate 2 455 MAIN ST





Camp Kinneywood

Salisbury Heights

Brattle St

Summit

W. Pleasant St

Beverly Road

Chadwick Square

Britann Square

West Tutuok

Hammond Heights

UMass Memorial Medical Center University Campus

Fairlawn

ORH

W. Main St

Columbus Park

MAIN SOUTH
UNIVERSITY PARK

W. Main St

Decoding

Lakeview

Cherry Valley

Stafford St

Woodland Park

Southbridge St

Peckachog St

W. Carroll

Map



The City of
WORCESTER

City Clerk Department

Nikolin Vangjeli, City Clerk
Stephen A.J. Pottle, Deputy City Clerk
Clare M. Robbins, Assistant City Clerk

2022 Proposed Polling Locations				
Ward	Precinct	Location:	Address	
1	1	Congregation Beth Israel, social hall	15 Jamesbury Drive	New
1	2	Nelson Place Elem. School	35 Nelson Place	
1	3	Assumption University, La Maison Francais	500 Salisbury Street	
1	4	Congregation Beth Israel, social hall	15 Jamesbury Drive	
1	5	Market 32	72 Pullman Street	
1	6	Unitarian Universalist Church, hall	90 Holden Street	New
2	1	Salem Covenant Church, hall	215 Mountain Street East	
2	2	Zion Lutheran Hall	41 Whitmarsh Ave	
2	3	Burncoat High School, Gym	179 Burncoat St.	
2	4	Lincoln Village Residents Alliance	116 Country Club Blvd	
2	5	Great Brook Valley Multipurpose Center	180 Constitution Avenue	
2	6	Salem Covenant Church, hall	215 Mountain Street East	
3	1	Worcester Technical High School, Gym	1 Skyline Drive	New
3	2	Belmont Apartments, community room	40 Belmont Street, rear	New
3	3	Worcester Center for Crafts	25 Sagamore Road	
3	4	Worcester Technical High School, Gym	1 Skyline Drive	
3	5	Living Word Church	30 Tyler Prentice Road	
3	6	Burncoat High School, Gym	179 Burncoat St.	New
4	1	Friendly House	36 Wall Street	New
4	2	American Legion East Side Post	326 Plantation Street	Split precinct
4	2A	American Legion East Side Post	326 Plantation Street	
4	3	Public Library	3 Salem Street	New
4	4	Mt. Carmel Apartments	50 Shrewsbury Street	New
4	5	Lincoln Park Tower, community room	11 Lake Avenue	
4	6	North High	Harrington Way	New
5	1	Addison Apartments, community room	6 Addison Street	
5	2	North High	Harrington Way	New
5	3	Lake Park Community House	300 Lake Avenue	
5	4	Massachusetts Audubon Society, Learning C	414 Massasoit Road	
5	5	Massachusetts Audubon Society, Visitor Cent	414 Massasoit Road	
5	6	Our Lady of Loreto	33 Massasoit Rd	New
6	1	Worcester Senior Center	128 Providence Street	
6	2	Worcester Senior Center	128 Providence Street	
6	3	Blackstone Heritage Corridor	3 Paul Clancy Way	
6	4	Saint Matthews Church	695 Southbridge Street	New
6	5	Blackstone Heritage Corridor	3 Paul Clancy Way	New
6	6	Emanuel Lutheran Church	200 Greenwood Street	New
7	1	Beaver Brook Community Building	15 Mann Street	
7	2	Coes Pond Village	39 First Street	New
7	3	Stearns Tavern	140 Mill St.	New
7	4	Shaw's Supermarket	68 Stafford Street	
7	5	Hadwen Park Congregational Church	6 Clover Street	Split precinct
7	5A	Hadwen Park Congregational Church	6 Clover Street	
7	6	Shaw's Supermarket	68 Stafford Street	New
8	1	Worcester Senior Center	128 Providence Street	New
8	2	Saint Peter's Church, hall	929 Main Street	
8	3	Saint Peter's Church, hall	929 Main Street	
8	4	Webster Square Towers, community room	1050 Main Street	
8	5	South Worc. Neighborhood Center	47 Camp St.	
8	6	Saint Matthews Church	695 Southbridge Street	New
9	1	Blessed Sacrament: Phelan Center	551 Pleasant Street	New
9	2	Blessed Sacrament: Phelan Center	551 Pleasant Street	New
9	3	Christ the King Catholic Church	1052 Pleasant St	New
9	4	Worcester Seventh-day Adventist Church	2 Airport Dr	
9	5	Congregation Beth Israel, social hall	15 Jamesbury Drive	New
9	6	Christ the King Catholic Church	1052 Pleasant St	New
10	1	Order of Ahepa Lodge	68 Cedar St	New
10	2	Order of Ahepa Lodge	68 Cedar St	
10	3	Murray Avenue Apartments, community room	50 Murray Avenue	
10	4	Elm Park Tower, community room	425 Pleasant Street	New
10	5	Dept. of Inspectional Services	25 Meade Street	New
10	6	YMCA	766 Main St.	New

CITY OF WORCESTER PROPOSED POLLING LOCATIONS

Worcester, Massachusetts

WARD/PRECINCT	LOCATION	ADDRESS
1-1	CONGREGATION BETH ISRAEL, SOCIAL HALL	11 JAMESWAY DR
1-2	NELSON PLACE ELEMENTARY SCHOOL	55 NELSON PL
1-3	ASSABTOWN COLLEGE, LA MARION FRANCOIS	150 TALBOTT ST
1-4	CONGREGATION BETH ISRAEL, SOCIAL HALL	15 JAMESWAY DR
1-4*	MARKET ST. PRICE CHOPPER SUPERMARKET, LEFT FRONT DOOR	60 HOLDEN ST
1-4*	UNITARIAN UNIVERSALIST CHURCH HALL	41 WINTHROP AVE
2-1	SALEM COVENANT CHURCH, REAR, BOGAL HALL	215 WOODMAN ST EAST
2-2	ZION LUTHERAN CHURCH, LEIST ST SIDE	215 WOODMAN ST EAST
2-3	BURNCOAT HIGH SCHOOL, GYM	179 BURNCOAT ST
2-4	LINCOLN VILLAGE RESIDENTIAL, VOCKERSBURG SIDE	118 COUNTRY CLUB BLVD
2-5	GREAT BROOK VALLEY MULTI-PURPOSE CENTER	180 CONSTITUTION AVE
2-6	SALEM COVENANT CHURCH, REAR, BOGAL HALL	215 WOODMAN ST EAST
3-1	WORCESTER TECHNICAL HIGH SCHOOL, GYM 1	1 OFFICER MANNY FAMILIA WAY
3-2	BELMONT TOWER APARTMENTS, REAR, COMMUNITY ROOM	48 BELMONT ST
3-3	WORCESTER CENTER FOR CHARITY, LOBBY	25 SACARAMEO RD
3-4	WORCESTER TECHNICAL HIGH SCHOOL, GYM	1 OFFICER MANNY FAMILIA WAY
3-4*	LIVING WORD CHURCH	30 TYLER PRENTICE RD
3-4*	BURNCOAT HIGH SCHOOL, GYM	179 BURNCOAT ST
4-1	AMERICAN LEGION EAST SIDE POST	328 PLANTATION ST
4-2	WORCESTER PUBLIC LIBRARY	300 LAKE AVE
4-3	ST. CAROL APARTMENTS	55 GREYSBURY ST
4-4	LINCOLN PARK TOWER, COMMUNITY ROOM	11 LAKE AVE
4-4*	NORTH HIGH SCHOOL	155 HARRINGTON WAY
5-1	ADDITION APARTMENTS, COMMUNITY ROOM	6 ADDISON CT
5-2	LAKE PARK COMMUNITY HOUSE, HAMPTON ST SIDE	155 HARRINGTON WAY
5-3	MASSACHUSETTS AUDUBON SOCIETY BROAD MEADOW BROOK, LEARNING CENTER	300 LAKE AVE
5-4	MASSACHUSETTS AUDUBON SOCIETY BROAD MEADOW BROOK	414 MASSABOAT RD
5-5	OUR LADY OF LORETO, BEAR, MARSH CENTER	23 MASSABOAT RD
6-1	WORCESTER SENIOR CENTER, LUNCH ROOM	128 PROVIDENCE ST
6-2	WORCESTER SENIOR CENTER, LUNCH ROOM	128 PROVIDENCE ST
6-3	BLACKSTONE HERITAGE CONCORD VISITOR CENTER	300 LAKE AVE
6-4	ST. MATTHEW'S CHURCH	495 SOUTHWORSHIP ST
6-5	BLACKSTONE HERITAGE CONCORD VISITOR CENTER*	300 LAKE AVE
6-5*	EMANUEL LUTHERAN CHURCH, HALL	200 GREENWOOD ST
7-1	EDWARDS BROOK COMMUNITY BUILDING	150 MANN ST
7-2	COES POND VILLAGE, LOWER LEVEL	33 FIRST ST
7-3	ST. ANNE'S TOWN	16 HILL ST
7-4	SHAW'S SUPERMARKET	66 STAFFORD ST
7-5	HAWDEN PARK CONGREGATIONAL CHURCH	6 CLOVER ST
7-5	SHAW'S SUPERMARKET	66 STAFFORD ST
8-1	WORCESTER SENIOR CENTER, LUNCH ROOM	128 PROVIDENCE ST
8-2	ST. PETER'S CHURCH, HALL	809 MARK ST
8-3	HEBERT SQUARE TOWERS, COMMUNITY ROOM	155 MANN ST
8-4	SOUTH WORCESTER NEIGHBORHOOD CENTER	47 CAMP ST
8-4*	ST. MATTHEW'S CHURCH	495 SOUTHWORSHIP ST
8-5	BLESSED SACRAMENT CHURCH, PHILAN CENTER*	501 PLEASANT ST
8-6	BLESSED SACRAMENT CHURCH, PHILAN CENTER*	501 PLEASANT ST
8-6	CHRIST THE KING CATHOLIC CHURCH	152 PLEASANT ST
8-6	WORCESTER SEVENTH DAY ADVENTIST CHURCH	2 FAIRPORT DR
8-6*	CONGREGATION BETH ISRAEL, SOCIAL HALL	15 JAMESWAY DR
8-6*	CHRIST THE KING CATHOLIC CHURCH	152 PLEASANT ST
10-1	ORDER OF AHPA, LODGE	80 CEDAR ST
10-2	MURRAY AVENUE APARTMENTS, COMMUNITY ROOM	80 CEDAR ST
10-3	616 PARK TOWNS, COMMUNITY ROOM	55 MURRAY AVE
10-4	DEPARTMENT OF INSPECTORIAL SERVICES, LOWER LEVEL	425 PLEASANT ST
10-5	THE MARK ST	78 MARK ST
10-6	CENTRAL COMMUNITY BRANCH, YMCA	128 PROVIDENCE ST

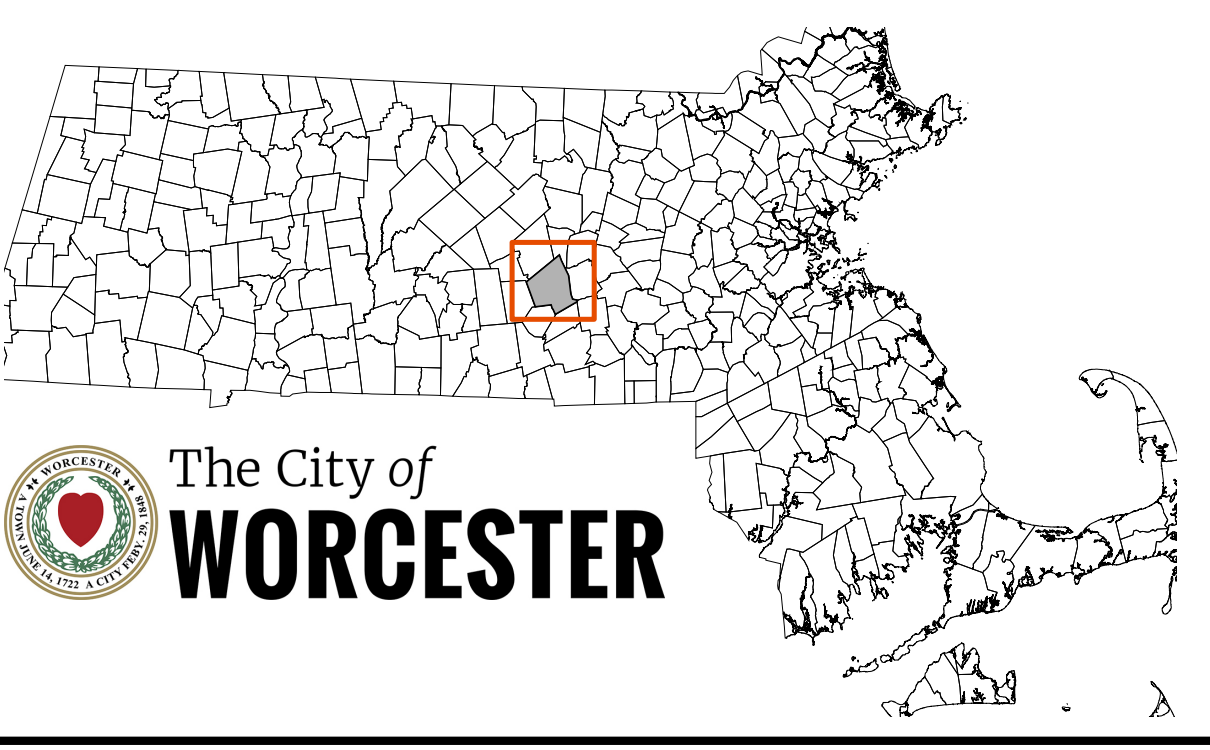
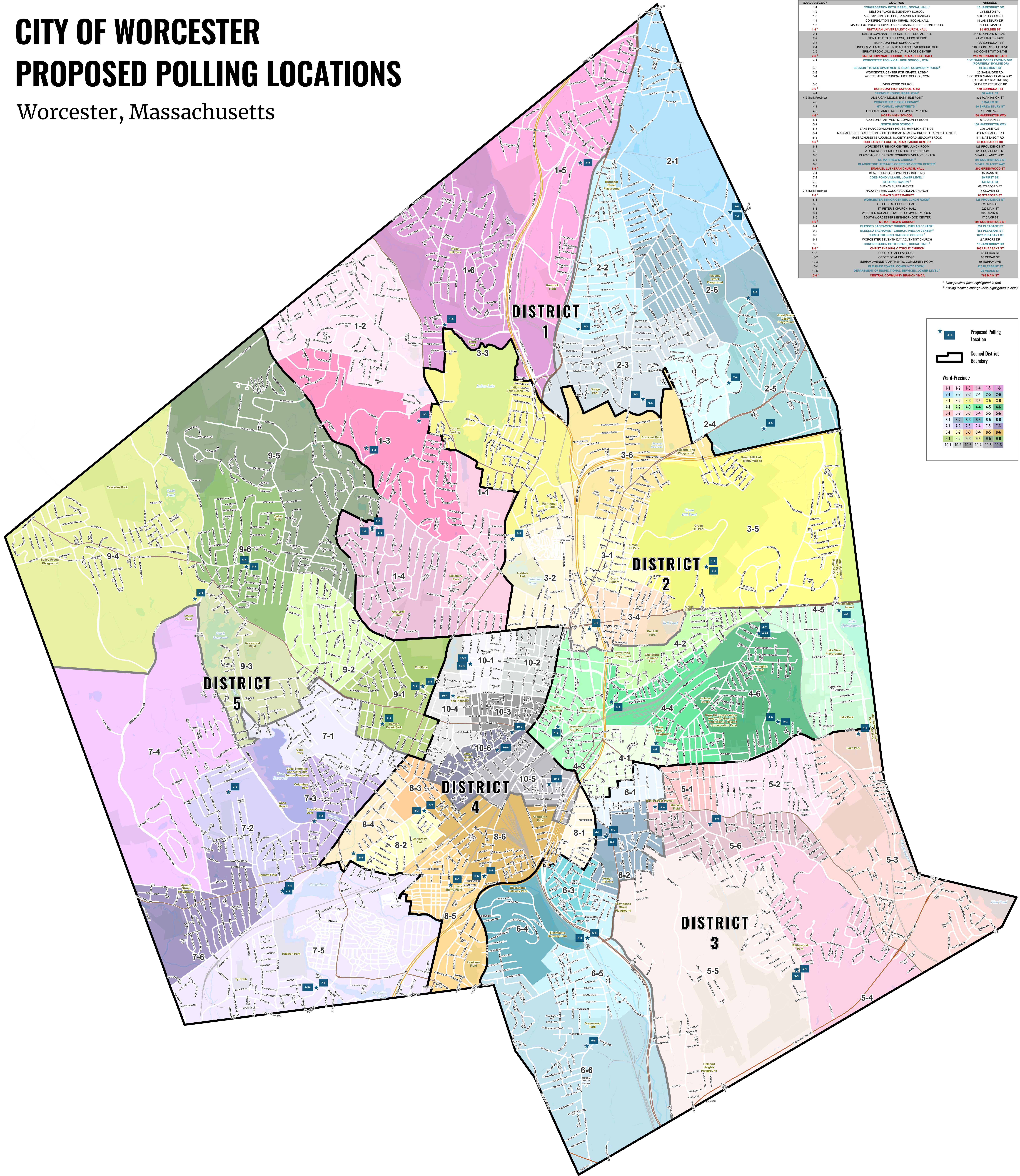
* New precinct (area highlighted in red)
* Polling location change (also highlighted in blue)

Proposed Polling Location

Council District Boundary

Ward-Precinct

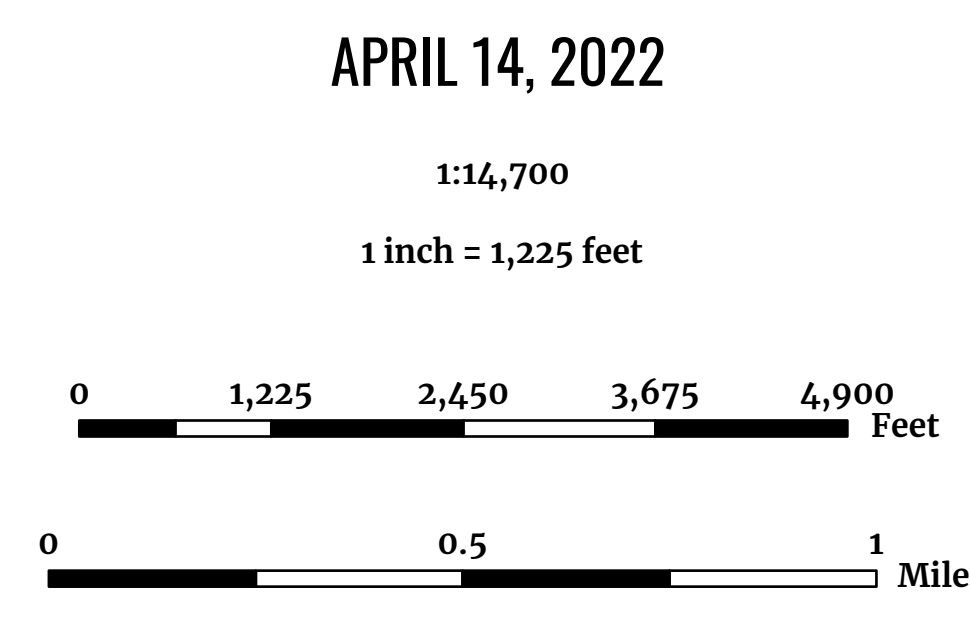
1-1	1-2	1-3	1-4	1-5	1-6
2-1	2-2	2-3	2-4	2-5	2-6
3-1	3-2	3-3	3-4	3-5	3-6
4-1	4-2	4-3	4-4	4-5	4-6
5-1	5-2	5-3	5-4	5-5	5-6
6-1	6-2	6-3	6-4	6-5	6-6
7-1	7-2	7-3	7-4	7-5	7-6
8-1	8-2	8-3	8-4	8-5	8-6
9-1	9-2	9-3	9-4	9-5	9-6
10-1	10-2	10-3	10-4	10-5	10-6



DATA SOURCES:
All data: City of Worcester Geographic Information System
Original Data - Digitized at 1:80 scale (Data true resolution: 1 inch = 40 feet).
Updated Using Spring 2002 Aerial Photography at 1:1,200 scale (1 inch = 100 feet).
Further Updates Using City of Worcester Information.

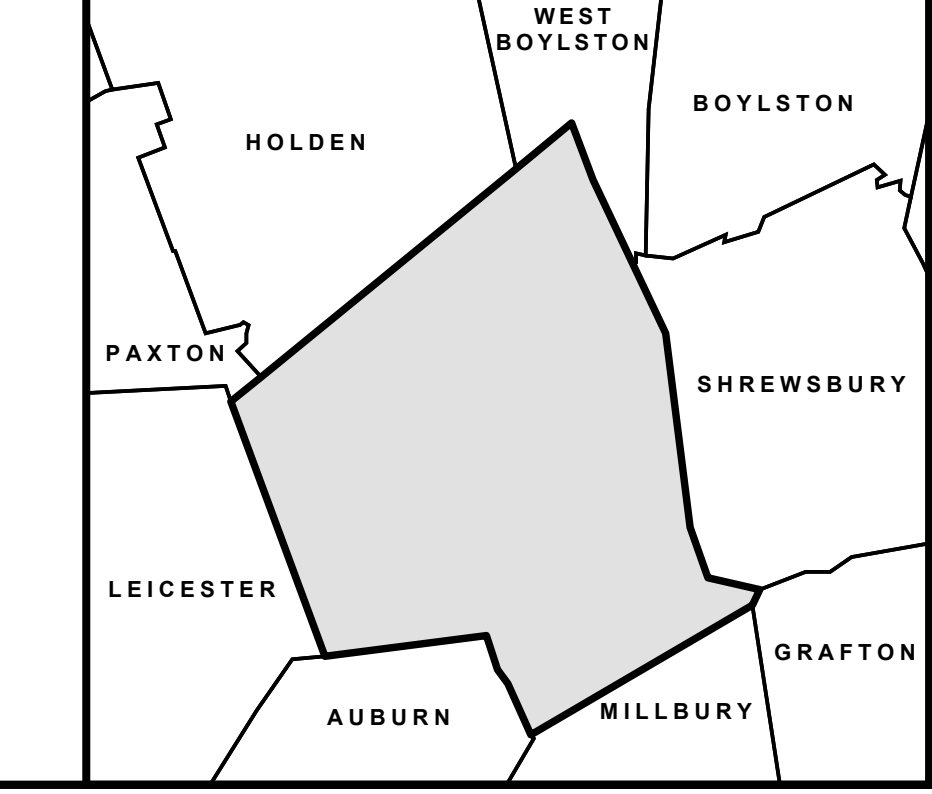
OFFICIAL DISTRICT, WARD, & PRECINCT BOUNDARIES:
City Council Districts updated from Census 2020 data. The ward and precinct boundaries were adopted by the Board of Election Commissioners October 14, 2021 and were approved by the Local Election Districts Review Committee October 27, 2021. These boundaries became effective December 31, 2021.

COORDINATE SYSTEM:
All map data is in the Massachusetts State Plane Coordinate system, North American Datum of 1983, Massachusetts Mainland Zone (4215). Units are measured in Feet.



Produced by the City of Worcester
Technical Services Department
Geographic Information Systems Division
Worcester, Massachusetts

Considerable effort has been made to ensure the accuracy, correctness and timeliness of data presented; however, this information is only as accurate as its sources and may not reflect the most current information. The City of Worcester assumes no liability for any errors, omissions or inaccuracies and makes no warranty, representation or guaranty of any kind, express or implied, as to the content or for any decisions made or actions taken or not taken by the user based upon any information provided on this map.





The City of **WORCESTER**

The Board of Election Commissioners will hold the following public hearings regarding drawing the 6 district lines for the Worcester School Committee. As required in the consent decree of Worcester Interfaith, Inc. et al v. City of Worcester, Massachusetts et al. Furthermore, the board will also take public feedback on the assignments for the 2022 State Election polling locations.

1. Thursday, May 12th, 2022, 5:30 PM

- *UNITARIAN UNIVERSALIST CHURCH, HALL, 90 HOLDEN ST*
(Parking is available on Shore Drive parking lot)

2. Thursday, May 19th, 2022, 5:30 PM

- WHA CONFERENCE CENTER, 630 PLANTATION STREET

3. Thursday, May 26th, 2022, 5:30 PM

- WORCESTER SENIOR CENTER, LUNCH RM, 128 PROVIDENCE ST

4. Thursday, June 2nd, 2022, 5:30 PM

- 5.** WORCESTER SEVENTH-DAY ADVENTIST CHURCH, 2 AIRPORT DR

5. Thursday, June 9th, 2022, 5:30 PM

- YMCA CENTRAL BRANCH, 766 MAIN ST



The City of
WORCESTER

To call into the virtual meetings:

Log in via your computer:

[https://cow.webex.com/meet/ElectionCommissionwebex.](https://cow.webex.com/meet/ElectionCommissionwebex)

Please make sure your computer has a
microphone and a camera.

Phone # 415-655-0001

(Access Code 160-935-9156 #).

**To submit testimony you may email
elections@worcesterma.gov or mail to
Worcester Elections, 455 Main Street, Room
208, Worcester, MA 01608.**



The City of
WORCESTER

Ủy ban Bầu cử sẽ tổ chức các buổi điều trần công khai trực tuyến liên quan đến việc vẽ đường ranh giới của 6 khu học chánh cho Ủy ban Trường học Worcester như được yêu cầu trong nghị định đồng thuận của Worcester Interfaith, Inc. và cộng sự vs. Thành phố Worcester, Massachusetts và cộng sự. Hơn nữa, hội đồng cũng sẽ lấy ý kiến phản hồi của công dân về các chỉ định cho các địa điểm bỏ phiếu Bầu cử Tiểu bang năm 2022.

1. Thứ Năm, ngày 12 tháng 5 năm 2022, 5:30 PM

UNITARIAN UNIVERSALIST CHURCH, HALL, 90 HOLDEN ST



2. Thứ Năm, ngày 19 tháng 5 năm 2022, 5:30 PM

WHA CONFERENCE CENTER, 630 PLANTATION STREET

3. Thứ Năm, ngày 26 tháng 5 năm 2022, 5:30 PM

WORCESTER SENIOR CENTER, LUNCH RM, 128 PROVIDENCE ST

4. Thứ Năm, ngày 2 tháng 6 năm 2022, 5:30 PM

WORCESTER SEVENTH-DAY ADVENTIST CHURCH, 2 AIRPORT DR

5. Thứ Năm, ngày 9 tháng 6 năm 2022, 5:30 PM

YMCA CENTRAL BRANCH, 766 MAIN ST



The City of
WORCESTER

Đề gọi vào các cuộc hội nghị trực tuyến:

Tham gia bằng máy tính:

<https://cow.webex.com/meet/ElectionCommissionwebe>

X.

Hãy đảm bảo rằng máy tính của quý vị có kết nối với
micro và camera.

Tham gia bằng điện thoại:

Phone # 415-655-0001

(Access Code 160-935-9156 #).

**Để cung cấp ý kiến, quý vị có thể gửi email tới
elections@worcesterma.gov hoặc gửi thư đến
Worcester Elections, 455 Main Street, Room 208,
Worcester, MA 01608.**



The City of
WORCESTER

La Junta de Comisionados Electorales llevará a cabo las siguientes audiencias públicas sobre el trazado de líneas divisorias de los 6 distritos del Comité Escolar de Worcester. Como se requiere en el decreto de consentimiento de Worcester Interfaith, Inc. et al, versus Municipalidad de Worcester, Massachusetts et al. Además, la Junta de Comisionados también tomará comentarios públicos sobre las asignaciones de los lugares de votación de las elecciones estatales de 2022.

1. Jueves, 12 de Mayo, 2022. 5:30 PM

Unitarian Universalist Church, Salón, 90 Holden Street

2. Jueves, 19 de Mayo, 2022, 5:30 PM

WHA Conference Center, 630 Plantation Street

3. Jueves, 26 de Mayo, 2022, 5:30 PM

Worcester Senior Center, Comedor, 128 Providence Street

4. Jueves, 2 de Junio, 2022, 5:30 PM

Worcester Seventh-Day Adventist Church, 2 Airport Drive

5. Jueves, 9 de Junio, 2022, 5:30 PM

YMCA Central Branch, 766 Main Street



The City of
WORCESTER

Para participar en las reuniones virtuales, ingrese a través de su computadora marcando:

<https://cow.webex.com/meet/ElectionCommissionwebex>.

Por favor asegúrese de que su computadora tiene micrófono y cámara.

Teléfono: (415) 655- 0001

(Código de acceso 160-935-9156#)

Para someter evidencia, Ud. puede enviar un correo electrónico a: elections@worcesterma.gov

**También puede enviar la evidencia por correo regular a: Worcester Elections
455 Main Street, Room 208, Worcester, MA 01608**